



Shared Ownership AT ABBEY BARN PARK

2 BED HOUSE

SEMI-DETACHED - PLOTS: 392, 394,
395, 397, 415, 419, 422, 423 & 427

TERRACED - PLOTS: 393, 396 & 426

TOTAL INTERNAL AREA: XXXXX

Living/Dining Room	4.74m max x 3.61m max	15' 6" max x 11' 10" max
Kitchen	2.34m x 3.20m	7' 7" x 10' 5"
Mastersuite	4.74m x 3.06m	15' 6" x 10' 0"
Bedroom 2	4.74m max x 3.27m max	15' 6" max x 10' 8" max

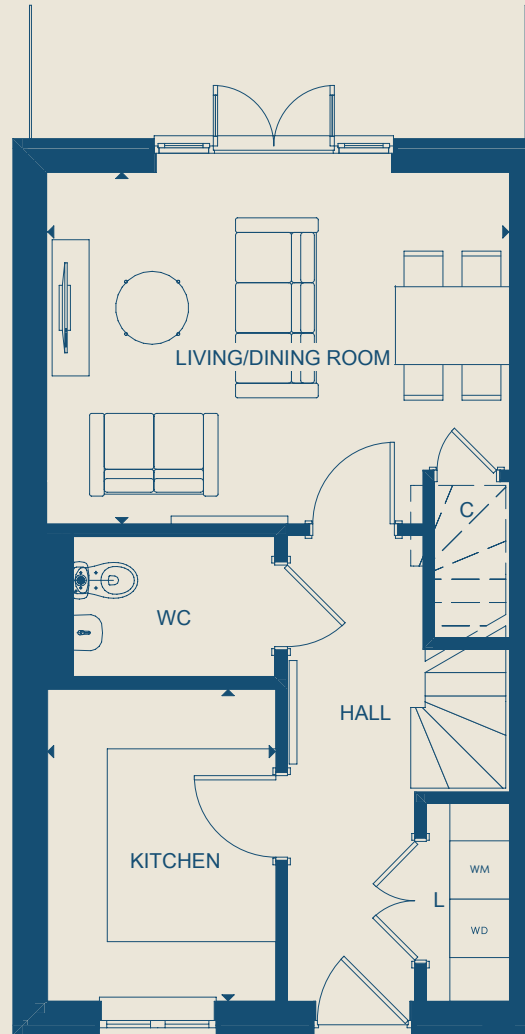
NEXT STEPS

The first Shared Ownership houses are currently forecast to be ready to move into in early Spring 2026 with later handovers through 2026. Please ask for the current build programme detail from the team and please remember build dates are estimated and subject to change.

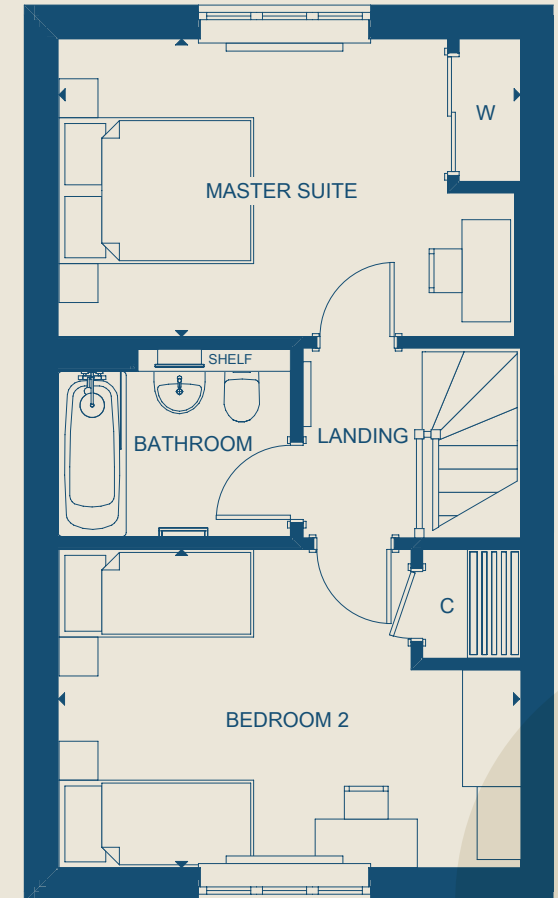
To reserve your home you will need to meet with one of our panel mortgage advisors who will confirm the home is affordable and at what share. When we have confirmation of affordability, you will pay a £500 reservation fee and will need to instruct a solicitor and finalise your mortgage application. From this point to exchange of contracts we work to 45 days.



thrivehomes.org.uk
abbeybarn@thrivehomes.org.uk



GROUND FLOOR



FIRST FLOOR

KEY

◄► Measuring points **W** Wardrobe **WM** Space and Plumbing for Washing Machine **WD** Space and Plumbing for Washer Dryer

Floorplans shown are indicative only. The kitchen layout and furniture positions are for indicative purposes only. All dimensions indicated are approximate and should not be relied upon for carpet sizes or items of furniture. Thrive Homes reserves the right to make changes to these plans prior to exchange of contracts. For exact plot specification, details of external and internal finishes, dimensions and floorplan differences, please speak to a Sales Executive for more details. All measurements given may vary within a tolerance of 5%. Legal completion is on 10 days' notice which will be served at the point of handover, or earlier by mutual completion.



Shared Ownership AT ABBEY BARN PARK

3 BED HOUSE

DETACHED - PLOTS: 398 & 418

TOTAL INTERNAL AREA: XXXXX

Living/Dining Room	5.09m max x 4.44m max	16' 8" max x 14' 6" max
Kitchen	2.59m x 3.15m	8' 5" x 10' 4"
Bedroom 1	2.75m x 4.77m	9' 0" x 15' 7"
Bedroom 2	2.75m max x 4.40m	9' 0" max x 14' 5"
Bedroom 3	2.22m x 3.88m max	7' 3" x 12' 8" max

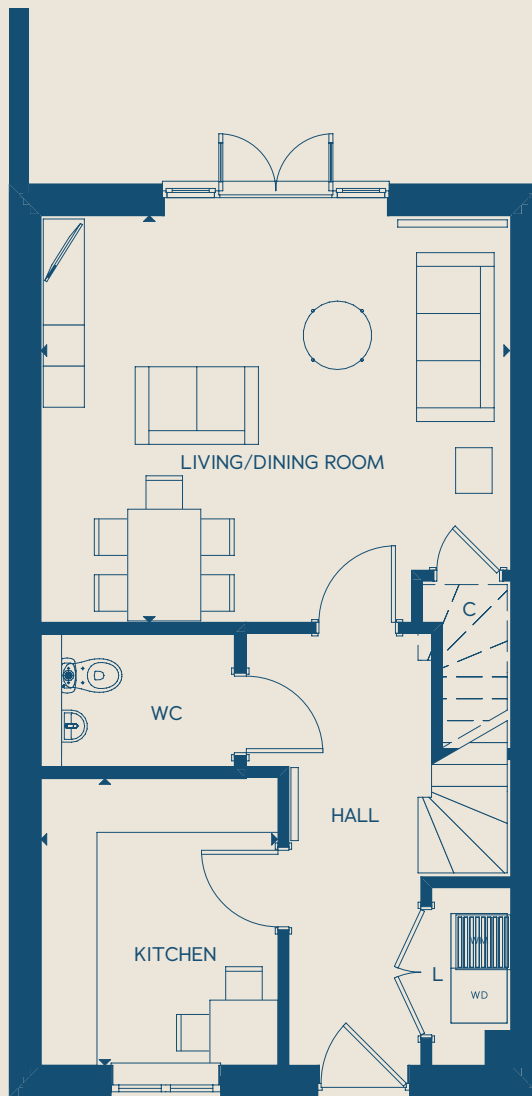
NEXT STEPS

The first Shared Ownership houses are currently forecast to be ready to move into in early Spring 2026 with later handovers through 2026. Please ask for the current build programme detail from the team and please remember build dates are estimated and subject to change.

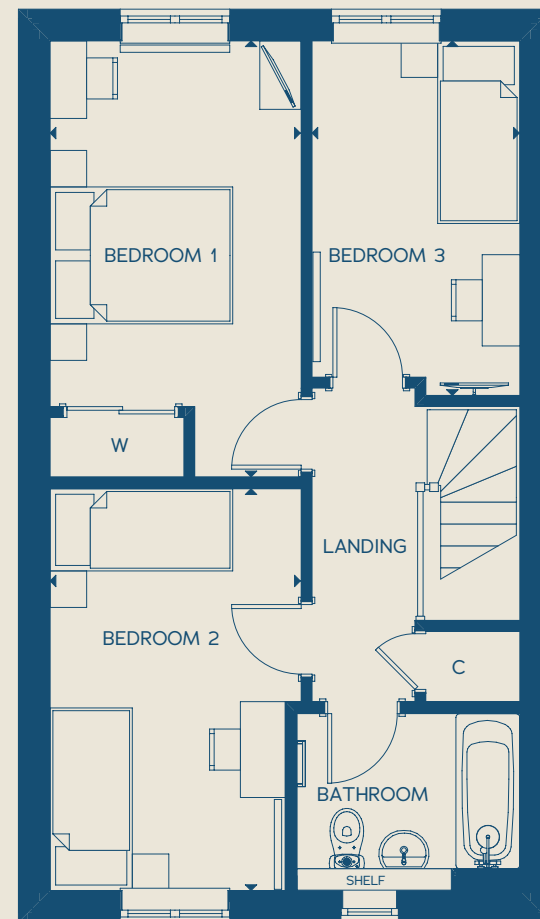
To reserve your home you will need to meet with one of our panel mortgage advisors who will confirm the home is affordable and at what share. When we have confirmation of affordability, you will pay a £500 reservation fee and will need to instruct a solicitor and finalise your mortgage application. From this point to exchange of contracts we work to 45 days.



thrivehomes.org.uk
abbeybarn@thrivehomes.org.uk



GROUND FLOOR



FIRST FLOOR

KEY

◀▶ Measuring points W Wardrobe WM Space and Plumbing for Washing Machine WD Space and Plumbing for Washer Dryer

Floorplans shown are indicative only. The kitchen layout and furniture positions are for indicative purposes only. All dimensions indicated are approximate and should not be relied upon for carpet sizes or items of furniture. Thrive Homes reserves the right to make changes to these plans prior to exchange of contracts. For exact plot specification, details of external and internal finishes, dimensions and floorplan differences, please speak to a Sales Executive for more details. All measurements given may vary within a tolerance of 5%. Legal completion is on 10 days' notice which will be served at the point of handover, or earlier by mutual completion.



Shared Ownership AT ABBEY BARN PARK

3 BED HOUSE

SEMI-DETACHED - PLOTS: 389, 391, 407, 409, 410, 411, 412, 413, 414, 416, 417, 420, 421, 424, 425

TERRACED - PLOTS: 390 & 408

TOTAL INTERNAL AREA: XXXXX

Living/Dining Room	5.12m max x 4.45m max	16' 9" max x 14' 7" max
Kitchen	2.59m x 3.14m	8' 5" x 10' 3"
Bedroom 1	2.74m x 4.77m	8' 11" x 15' 7"
Bedroom 2	2.74m max x 4.40m	8' 11" max x 14' 5"
Bedroom 3	2.27m x 3.88m max	7' 5" x 12' 8" max

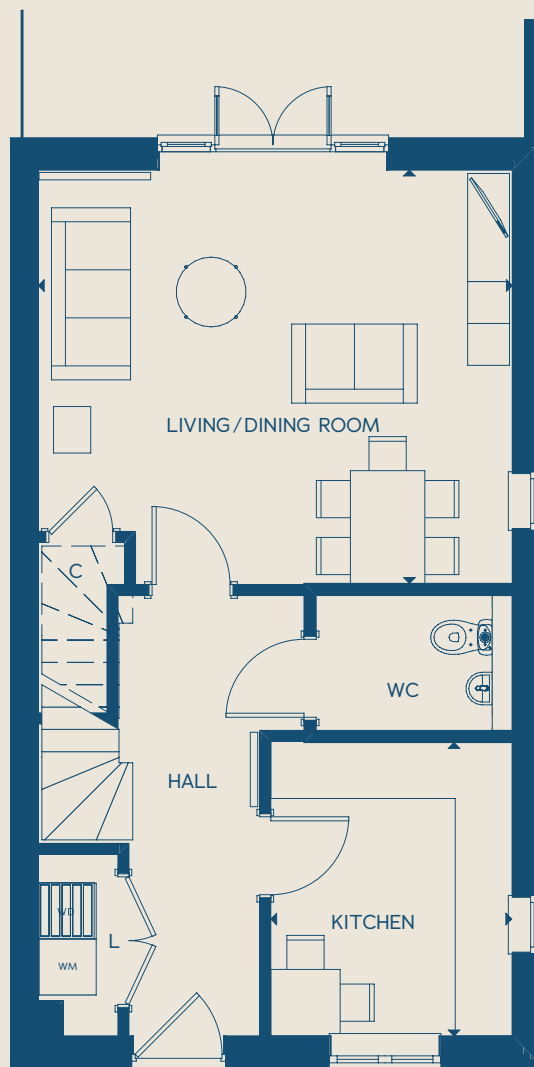
NEXT STEPS

The first Shared Ownership houses are currently forecast to be ready to move into in early Spring 2026 with later handovers through 2026. Please ask for the current build programme detail from the team and please remember build dates are estimated and subject to change.

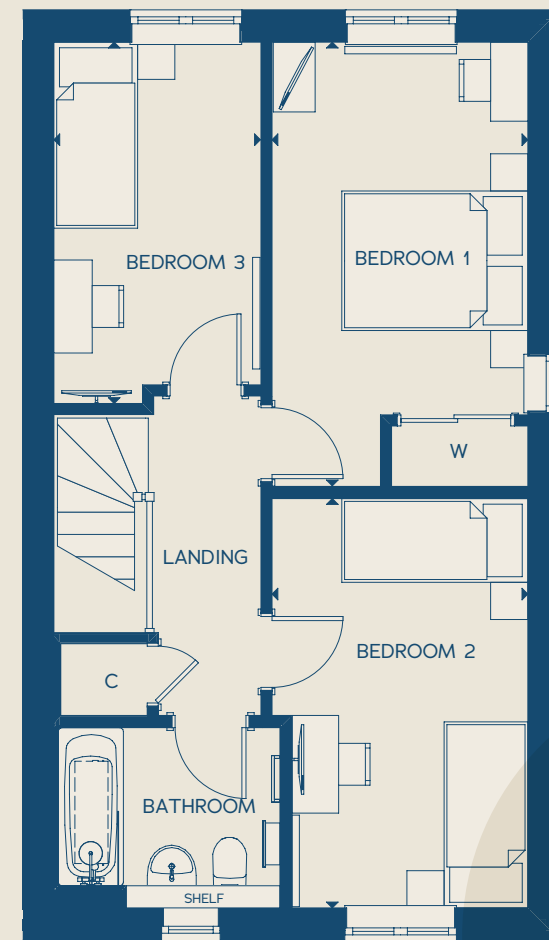
To reserve your home you will need to meet with one of our panel mortgage advisors who will confirm the home is affordable and at what share. When we have confirmation of affordability, you will pay a £500 reservation fee and will need to instruct a solicitor and finalise your mortgage application. From this point to exchange of contracts we work to 45 days.



thrivehomes.org.uk
abbeybarn@thrivehomes.org.uk



GROUND FLOOR



FIRST FLOOR

KEY

◀▶ Measuring points W Wardrobe WM Space and Plumbing for Washing Machine WD Space and Plumbing for Washer Dryer

Floorplans shown are indicative only. The kitchen layout and furniture positions are for indicative purposes only. All dimensions indicated are approximate and should not be relied upon for carpet sizes or items of furniture. Thrive Homes reserves the right to make changes to these plans prior to exchange of contracts. For exact plot specification, details of external and internal finishes, dimensions and floorplan differences, please speak to a Sales Executive for more details. All measurements given may vary within a tolerance of 5%. Legal completion is on 10 days' notice which will be served at the point of handover, or earlier by mutual completion.



Shared Ownership AT ABBEY BARN PARK

2 BED FLAT

OVER GARAGE FLAT - PLOT: 388

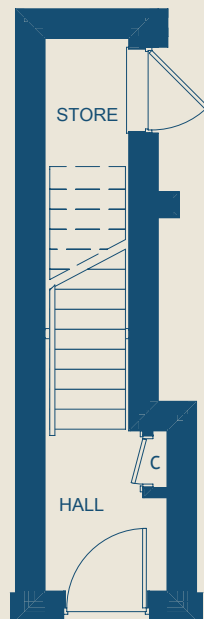
TOTAL INTERNAL AREA: XXXXX

Living/Dining Room	4.47m max x 4.43m max	14' 7" max x 14' 6" max
Kitchen	2.83m x 2.07m	9' 3" x 6' 9"
Bedroom 1	3.02m x 4.38m	9' 10" x 14' 4"
Bedroom 2	3.83m max x 3.25m max	12' 6" max x 10' 7" max

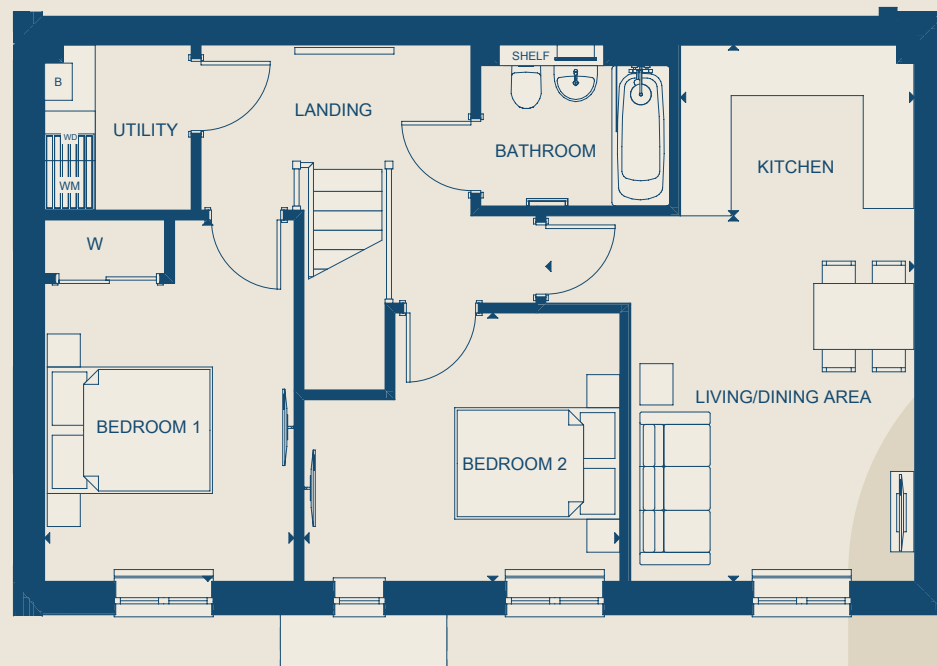
NEXT STEPS

The first Shared Ownership houses are currently forecast to be ready to move into in early Spring 2026 with later handovers through 2026. Please ask for the current build programme detail from the team and please remember build dates are estimated and subject to change.

To reserve your home you will need to meet with one of our panel mortgage advisors who will confirm the home is affordable and at what share. When we have confirmation of affordability, you will pay a £500 reservation fee and will need to instruct a solicitor and finalise your mortgage application. From this point to exchange of contracts we work to 45 days.



GROUND FLOOR



FIRST FLOOR

KEY

◄► Measuring points W Wardrobe WM Space and Plumbing for Washing Machine WD Space and Plumbing for Washer Dryer

Floorplans shown are indicative only. The kitchen layout and furniture positions are for indicative purposes only. All dimensions indicated are approximate and should not be relied upon for carpet sizes or items of furniture. Thrive Homes reserves the right to make changes to these plans prior to exchange of contracts. For exact plot specification, details of external and internal finishes, dimensions and floorplan differences, please speak to a Sales Executive for more details. All measurements given may vary within a tolerance of 5%. Legal completion is on 10 days' notice which will be served at the point of handover, or earlier by mutual completion.



thrivehomes.org.uk
abbeybarn@thrivehomes.org.uk