



VIVID AT

OAKLANDS PLACE

FAREHAM, HAMPSHIRE

HOW IT WORKS

Helping you find your perfect place...

- 1 View the listing for Oaklands Place and apply online:
<https://yourvividhome.co.uk/developments/oaklands-place>

- 2 Once we've received your application, we'll check you're eligible to apply for Shared Ownership. One of our Sales Officers will get in touch to let you know if you meet the priority criteria for the development, this can take a few weeks when we're busy.

- 3 If we're able to progress your application, we'll signpost you to one of our panel financial advisors* to talk about your affordability and the share you could purchase (even if you're a potential cash buyer). If you choose to use them or your own financial advisor, they'll send us your completed financial assessment and some more documents like proof of your deposit and mortgage AIP (Agreement in Principle). Please note, VIVID are not a credit broker.

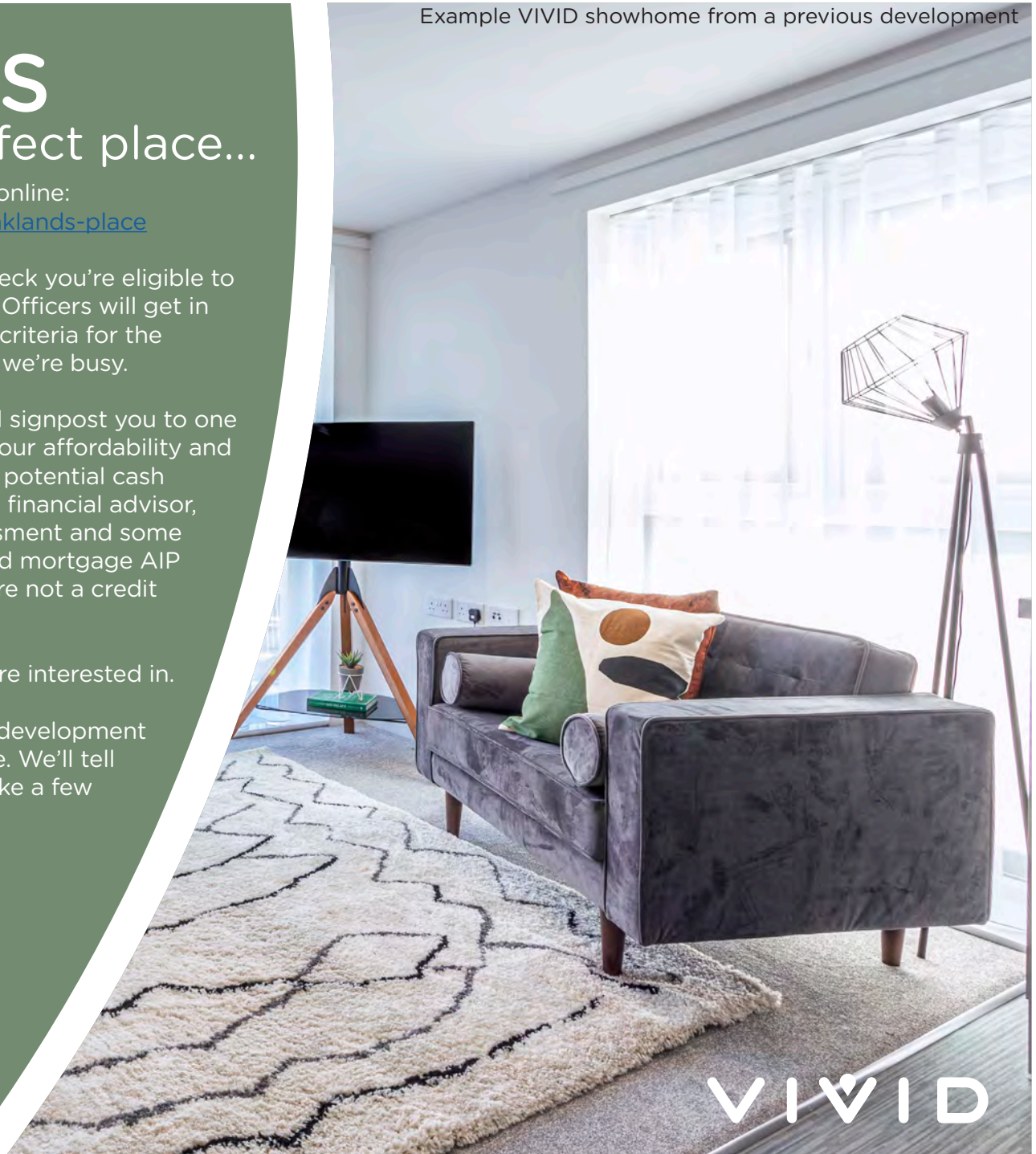
We'll also ask you to email us which plots you're interested in.

- 4 We'll review all the documents and check the development criteria to see if we're able to offer you a home. We'll tell you as soon as we can, sometimes this may take a few weeks whilst we complete this process

*There are many financial advisors you could use to understand and apply for a Shared Ownership mortgage on your behalf. Every financial advisor has a duty to find you the mortgage that's best for you. They'll keep in mind VIVID's timescales for any mortgage that is offered to you, as it needs to meet our sales timeframe. We're signposting you to our panel Financial Advisors as they are experts in Shared Ownership and know the VIVID process too. They'll complete your affordability checks free of charge. If you're offered a home and apply for a mortgage with them there will be a £250 fee, please check with your panel financial advisor when this will be payable. If you choose to use another Financial Advisor that's absolutely fine, and your choice won't impact any VIVID decision on whether you buy a home from us.

Please note; VIVID is not a credit broker.

Example VIVID showhome from a previous development



VIVID

TRUST VIVID

Always got a prompt response to my emails. I was kept informed throughout the process. Lovely staff.

Kara - Shared Owner

The service from start to finish was amazing. Fantastic communication, things happened when they said they would and the whole process was so easy.

Nicola - Shared Owner

VIVID have been outstanding from the very beginning of my application - they professionally supported me through the whole process explained every step and made me feel part of the VIVID family, I can't stress how amazing all the VIVID team have been - thank you.

Susan - Shared Owner

Example VIVID showhome from a previous development



VIVID

Photo from nearby Fareham

THE DEVELOPMENT

Barley Grange is a selection of 2 & 3 bedroom houses located off Southampton Road!

Oaklands Place is situated close to the main centre of Fareham. You can walk to the central precinct in Fareham within just 7 minutes and here you'll find a great range of high street shops, supermarkets, and places to eat.

Fareham also has entertainment attractions such as a museum and attractive harbour, along with a train station providing direct routes to Portsmouth in just 10 minutes and Southampton in around 28 minutes.



THE LOCATION

If you live in this part of the South Coast you're spoiled for choice

There are other local places of interest to visit too, Whiteley is close by to spend a few hours exploring. Again, there is a great selection of high street shops, restaurants, and a cinema on your doorstep at Whiteley Shopping Centre, as well as excellent commuter links to Southampton and Portsmouth via the M27.

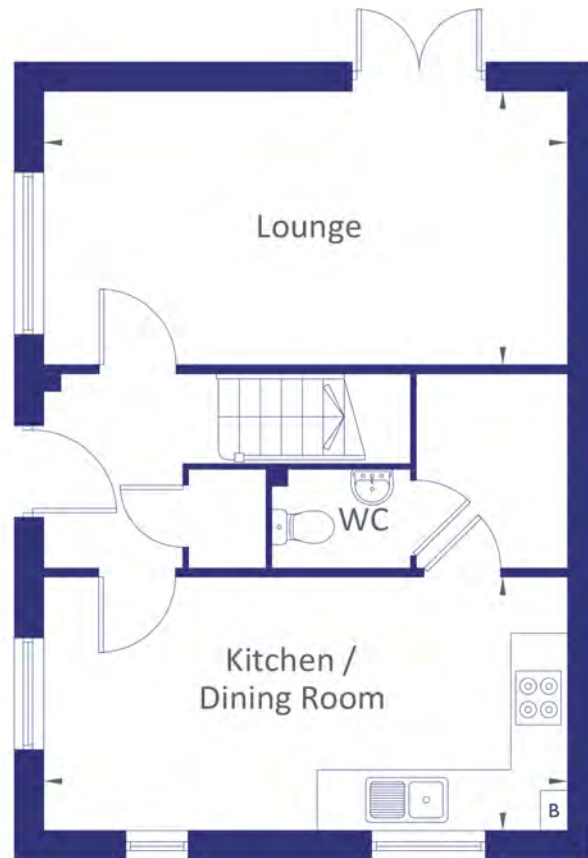
Also, a short drive away you'll find plenty of countryside and walking trails for you to explore such as the walk from the picturesque Swanwick Marina to Warsash which has spectacular views. Holly Hill nature reserve is also close by and not to be missed, it is a 28.1-hectare Local Nature Reserve in Fareham, the park has landscaped areas with lakes, waterfalls, islands and woods with exotic trees and flowers, and large oak trees.

Photo from nearby Fareham



Oaklands Place

Plot 12
3 Bedroom House



GROUND FLOOR

*B = Boiler



FIRST FLOOR

GROUND FLOOR

Lounge
5.75m [18'-10"] x 3.04m [10']

Kitchen / Dining Room
5.75m [18'-10"] x 2.82m [9'-3"]

FIRST FLOOR

Bedroom 1
5.75m [18'-10"] x 3.10m [10'-2"]

Bedroom 2
3.08m [10'-1"] x 2.77m [9'-1"]

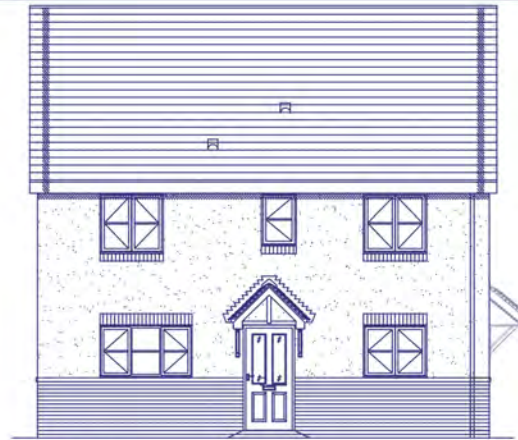
Bedroom 3
3.01m [9'-11"] x 2.60m [8'-6"]

www.yourvividhome.co.uk
[@WeAreVIVIDsales](https://www.instagram.com/WeAreVIVIDsales)

Please note floorplans are not to scale and are indicative only, total areas are provided as gross internal areas and are subject to variance and these plans do not act as part of a legally binding contract, warranty or guarantee. These plans may not be to scale and dimensions may vary during the build programme. It is common for fixtures and fittings to change during the build programme, for example boilers. Location of windows, doors, kitchen units and appliances may differ. Doors may swing in to the opposite direction to that shown on selected houses. Dimensions, which are taken from the indicated points of measurement are for guidance only and are not intended to be used to calculate the space needed for specific pieces of furniture. If your home is set within a terrace row, the position of the windows may vary from those shown on this plan. The property may also be a handed (mirrored) version of the layout shown here. We advise that you do not order any furniture based on these indicative plans, please wait until you can measure up fully, inside the property. Please speak to a member of our sales team about when you can gain access to take measurements. We will not be responsible for costs incurred due to ordering incorrect furniture. VIVID Housing Limited is registered in England and Wales as a registered society under the Co-operative and Community Benefit Societies Act 2014 under number 7544 with exempt charity status and as a registered provider of social housing with the Homes and Communities Agency under number 4850. Our registered office is at Peninsular House, Wharf Road, Portsmouth, Hampshire, PO2 8HB. All information correct at time of creation – October 2023.

Oaklands Place

Plot 12



PLOT 12
FRONT ELEVATION



PLOT 12
SIDE ELEVATION



PLOT 12
SIDE ELEVATION

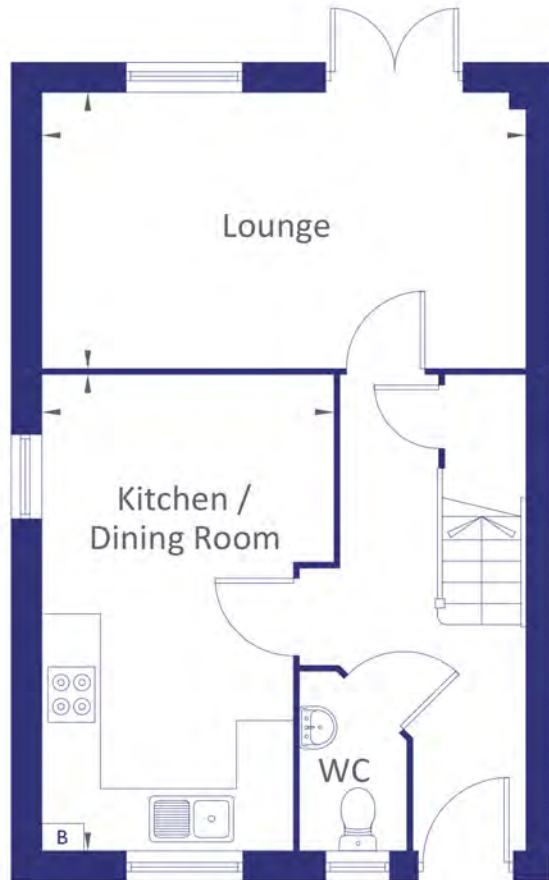
Please note floorplans are not to scale and are indicative only, total areas are provided as gross internal areas and are subject to variance and these plans do not act as part of a legally binding contract, warranty or guarantee. These plans may not be to scale and dimensions may vary during the build programme. It is common for fixtures and fittings to change during the build programme, for example boilers. Location of windows, doors, kitchen units and appliances may differ. Doors may swing in to the opposite direction to that shown on selected houses. Dimensions, which are taken from the indicated points of measurement are for guidance only and are not intended to be used to calculate the space needed for specific pieces of furniture. If your home is set within a terrace row, the position of the windows may vary from those shown on this plan. The property may also be a handed (mirrored) version of the layout shown here. We advise that you do not order any furniture based on these indicative plans, please wait until you can measure up fully, inside the property. Please speak to a member of our sales team about when you can gain access to take measurements. We will not be responsible for costs incurred due to ordering incorrect furniture. VIVID Housing Limited is registered in England and Wales as a registered society under the Co-operative and Community Benefit Societies Act 2014 under number 7544 with exempt charity status and as a registered provider of social housing with the Homes and Communities Agency under number 4850. Our registered office is at Peninsular House, Wharf Road, Portsmouth, Hampshire, PO2 8HB. All information correct at time of creation – October 2023.

www.yourvividhome.co.uk
[@WeAreVIVIDsales](https://www.instagram.com/WeAreVIVIDsales)



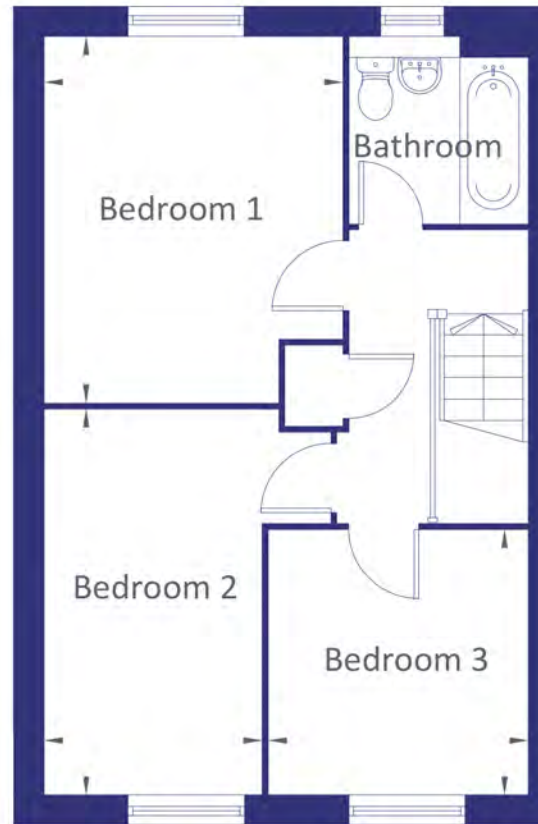
Oaklands Place

Plot 18
3 Bedroom House



*B = Boiler

GROUND FLOOR



FIRST FLOOR

GROUND FLOOR

Lounge
5.18m [17'] x 2.99m [9'-10"]

Kitchen / Dining Room
5.16m [16'-11"] x 3.12m [10'-3"]

FIRST FLOOR

Bedroom 1
3.97m [13'] x 3.20m [10'-6"]

Bedroom 2
4.18m [13'-9"] x 2.33m [7'-8"]

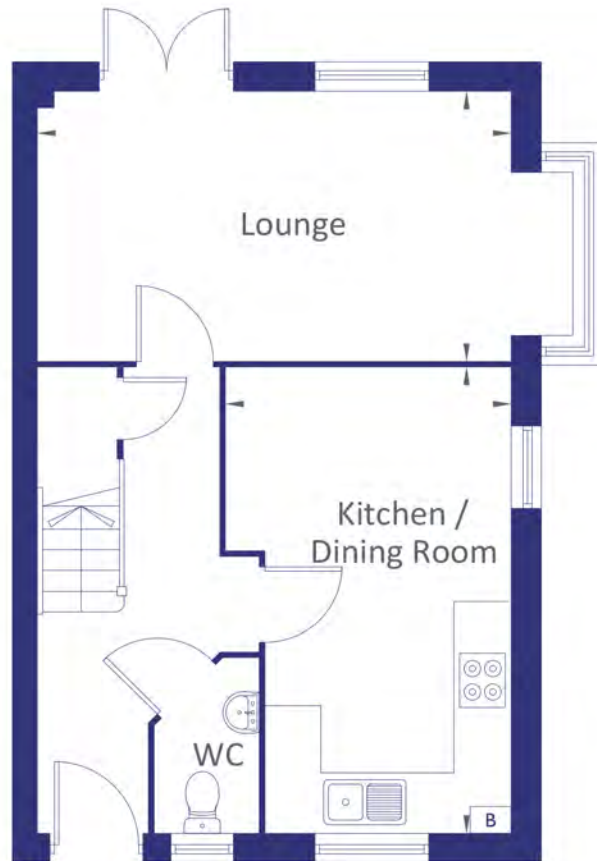
Bedroom 3
2.88m [9'5"] x 2.78m [9'-1"]

www.yourvividhome.co.uk
[@WeAreVIVIDsales](https://www.instagram.com/WeAreVIVIDsales)

Please note floorplans are not to scale and are indicative only, total areas are provided as gross internal areas and are subject to variance and these plans do not act as part of a legally binding contract, warranty or guarantee. These plans may not be to scale and dimensions may vary during the build programme. It is common for fixtures and fittings to change during the build programme, for example boilers. Location of windows, doors, kitchen units and appliances may differ. Doors may swing in to the opposite direction to that shown on selected houses. Dimensions, which are taken from the indicated points of measurement are for guidance only and are not intended to be used to calculate the space needed for specific pieces of furniture. If your home is set within a terrace row, the position of the windows may vary from those shown on this plan. The property may also be a handed (mirrored) version of the layout shown here. We advise that you do not order any furniture based on these indicative plans, please wait until you can measure up fully, inside the property. Please speak to a member of our sales team about when you can gain access to take measurements. We will not be responsible for costs incurred due to ordering incorrect furniture. VIVID Housing Limited is registered in England and Wales as a registered society under the Co-operative and Community Benefit Societies Act 2014 under number 7544 with exempt charity status and as a registered provider of social housing with the Homes and Communities Agency under number 4850. Our registered office is at Peninsular House, Wharf Road, Portsmouth, Hampshire, PO2 8HB. All information correct at time of creation – October 2023.

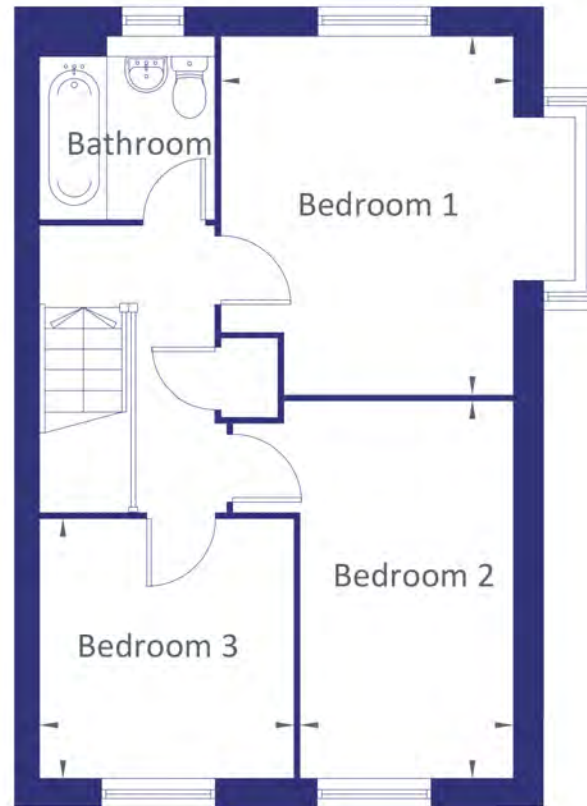
Oaklands Place

Plot 19
3 Bedroom House



GROUND FLOOR

*B = Boiler



FIRST FLOOR

GROUND FLOOR

Lounge
5.18m [17'] x 2.99m [9'-10"]

Kitchen / Dining Room
5.19m [17'] x 3.12m [10'-3"]

FIRST FLOOR

Bedroom 1
3.97m [13'] x 3.20m [10'-6"]

Bedroom 2
4.18m [13'-9"] x 2.33m [7'-8"]

Bedroom 3
2.88m [9'5"] x 2.78m [9'-1"]

www.yourvividhome.co.uk
[@WeAreVIVIDsales](https://www.instagram.com/WeAreVIVIDsales)

Please note floorplans are not to scale and are indicative only, total areas are provided as gross internal areas and are subject to variance and these plans do not act as part of a legally binding contract, warranty or guarantee. These plans may not be to scale and dimensions may vary during the build programme. It is common for fixtures and fittings to change during the build programme, for example boilers. Location of windows, doors, kitchen units and appliances may differ. Doors may swing in to the opposite direction to that shown on selected houses. Dimensions, which are taken from the indicated points of measurement are for guidance only and are not intended to be used to calculate the space needed for specific pieces of furniture. If your home is set within a terrace row, the position of the windows may vary from those shown on this plan. The property may also be a handed (mirrored) version of the layout shown here. We advise that you do not order any furniture based on these indicative plans, please wait until you can measure up fully, inside the property. Please speak to a member of our sales team about when you can gain access to take measurements. We will not be responsible for costs incurred due to ordering incorrect furniture. VIVID Housing Limited is registered in England and Wales as a registered society under the Co-operative and Community Benefit Societies Act 2014 under number 7544 with exempt charity status and as a registered provider of social housing with the Homes and Communities Agency under number 4850. Our registered office is at Peninsular House, Wharf Road, Portsmouth, Hampshire, PO2 8HB. All information correct at time of creation – October 2023.

Oaklands Place

Plots 18, 19



PLOT 18
SIDE ELEVATION



PLOT 19
SIDE ELEVATION



PLOT 18
FRONT ELEVATION

PLOT 19



PLOT 19
REAR ELEVATION

PLOT 18

www.yourvividhome.co.uk
@WeAreVIVIDsales

Please note floorplans are not to scale and are indicative only, total areas are provided as gross internal areas and are subject to variance and these plans do not act as part of a legally binding contract, warranty or guarantee. These plans may not be to scale and dimensions may vary during the build programme. It is common for fixtures and fittings to change during the build programme, for example boilers. Location of windows, doors, kitchen units and appliances may differ. Doors may swing in to the opposite direction to that shown on selected houses. Dimensions, which are taken from the indicated points of measurement are for guidance only and are not intended to be used to calculate the space needed for specific pieces of furniture. If your home is set within a terrace row, the position of the windows may vary from those shown on this plan. The property may also be a handed (mirrored) version of the layout shown here. We advise that you do not order any furniture based on these indicative plans, please wait until you can measure up fully, inside the property. Please speak to a member of our sales team about when you can gain access to take measurements. We will not be responsible for costs incurred due to ordering incorrect furniture. VIVID Housing Limited is registered in England and Wales as a registered society under the Co-operative and Community Benefit Societies Act 2014 under number 7544 with exempt charity status and as a registered provider of social housing with the Homes and Communities Agency under number 4850. Our registered office is at Peninsular House, Wharf Road, Portsmouth, Hampshire, PO2 8HB. All information correct at time of creation – October 2023.



Oaklands Place

Plot 26
3 BEDROOM HOUSE

GROUND FLOOR

Lounge 5.18m x 2.99m
(17'-0" x 9'-10")

Kitchen / Dining Room 5.16m x 2.69m
(16'-11" x 8'-10")

FIRST FLOOR

Bedroom 1 3.97m x 3.20m
(13'-0" x 10'-6")

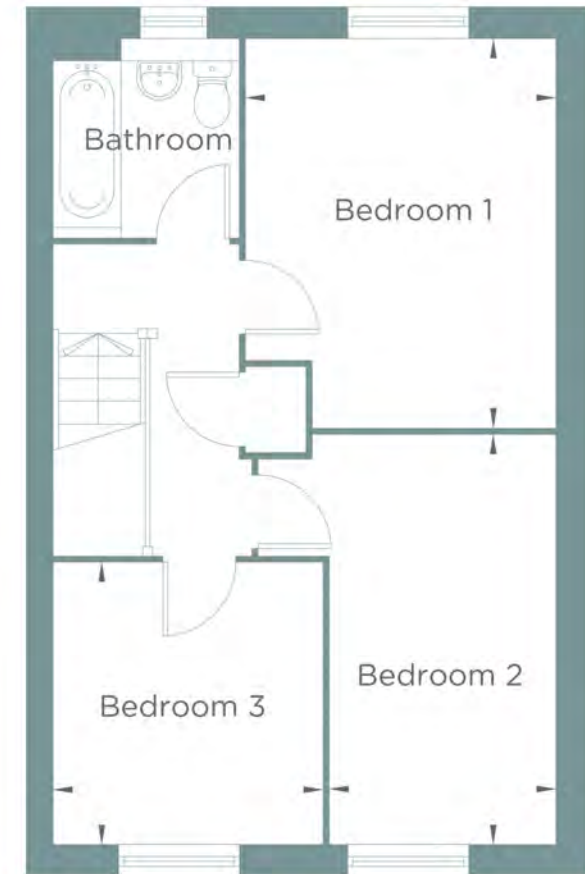
Bedroom 2 4.18m x 2.33m
(13'-9" x 7'-8")

Bedroom 3 2.88m x 2.78m
(9'-5" x 9'-1")



GROUND FLOOR

*B = Boiler



FIRST FLOOR

Please note floorplans are not to scale and are indicative only, total areas are provided as gross internal areas and are subject to variance and these plans do not act as part of a legally binding contract, warranty or guarantee. These plans may not be to scale and dimensions may vary during the build programme, it is common for fixtures and fittings to change during the build programme, for example boilers. Location of windows, doors, kitchen units and appliances may differ. Doors may swing in to the opposite direction to that shown on selected houses. Dimensions, which are taken from the indicated points of measurement are for guidance only and are not intended to be used to calculate the space needed for specific pieces of furniture. If your home is set within a terrace row, the position of the windows may vary from those shown on this plan. The property may also be a handed (mirrored) version of the layout shown here. We advise that you do not order any furniture based on these indicative plans, please wait until you can measure up fully inside the property. Please speak to a member of our sales team about when you can gain access to take measurements. We will not be responsible for costs incurred due to ordering incorrect furniture. VIVID Housing Limited is registered in England and Wales as a registered society under the Co-operative and Community Benefit Societies Act 2014 under number 7544 with exempt charity status and as a registered provider of social housing with the Homes and Communities Agency under number 4850. Our registered office is at Peninsular House, Wharf Road, Portsmouth, Hampshire, PO2 8HB. All information correct at time of creation - March 2024.

VIVID

Oaklands Place

Plot 27
3 BEDROOM HOUSE

GROUND FLOOR

Lounge	5.18m x 2.99m (17'-0" x 9'-10")
Kitchen / Dining Room	5.16m x 2.69m (16'-11" x 8'-10")

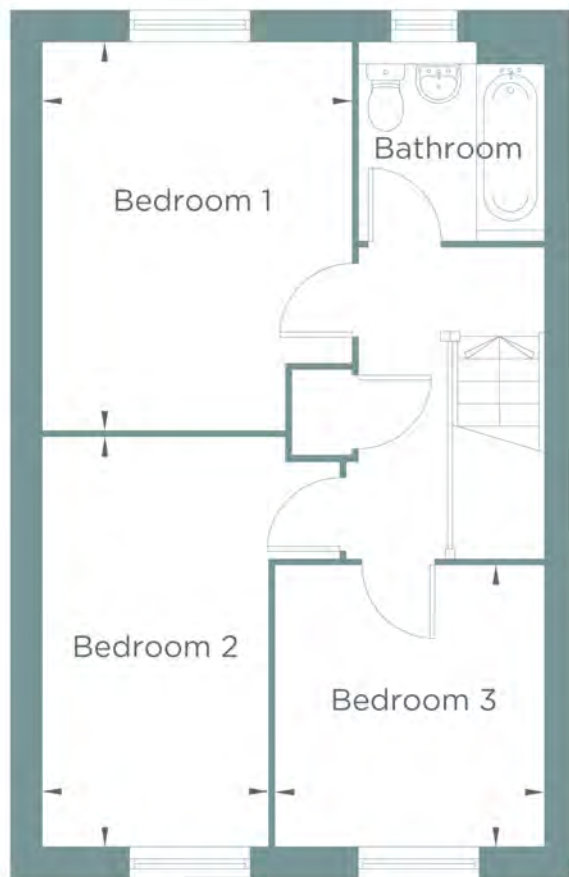
FIRST FLOOR

Bedroom 1	3.97m x 3.20m (13'-0" x 10'-6")
Bedroom 2	4.18m x 2.33m (13'-9" x 7'-8")
Bedroom 3	2.88m x 2.78m (9'-5" x 9'-1")



*B = Boiler

GROUND FLOOR



FIRST FLOOR

Please note floorplans are not to scale and are indicative only. Total areas are provided as gross internal areas and are subject to variance and these plans do not act as part of a legally binding contract, warranty or guarantee. These plans may not be to scale and dimensions may vary during the build programme. It is common for fixtures and fittings to change during the build programme, for example boilers. Location of windows, doors, kitchen units and appliances may differ. Doors may swing in to the opposite direction to that shown on selected houses. Dimensions, which are taken from the indicated points of measurement are for guidance only and are not intended to be used to calculate the space needed for specific pieces of furniture. If your home is set within a terrace row, the position of the windows may vary from those shown on this plan. The property may also be a handed (mirrored) version of the layout shown here. We advise that you do not order any furniture based on these indicative plans, please wait until you can measure up fully inside the property. Please speak to a member of our sales team about when you can gain access to take measurements. We will not be responsible for costs incurred due to ordering incorrect furniture. VIVID Housing Limited is registered in England and Wales as a registered society under the Co-operative and Community Benefit Societies Act 2014 under number 7544 with exempt charity status and as a registered provider of social housing with the Homes and Communities Agency under number 4850. Our registered office is at Peninsular House, Wharf Road, Portsmouth, Hampshire, PO2 8HB. All information correct at time of creation - March 2024.

VIVID

Oaklands Place

Plots 26 & 27
3 BEDROOM HOUSE



Please note floorplans are not to scale and are indicative only, total areas are provided as gross internal areas and are subject to variance and these plans do not act as part of a legally binding contract, warranty or guarantee. These plans may not be to scale and dimensions may vary during the build programme. It is common for fixtures and fittings to change during the build programme, for example boilers. Location of windows, doors, kitchen units and appliances may differ. Doors may swing in to the opposite direction to that shown on selected houses. Dimensions, which are taken from the indicated points of measurement are for guidance only and are not intended to be used to calculate the space needed for specific pieces of furniture. If your home is set within a terrace row, the position of the windows may vary from those shown on this plan. The property may also be a handed (mirrored) version of the layout shown here. We advise that you do not order any furniture based on these indicative plans, please wait until you can measure up fully, inside the property. Please speak to a member of our sales team about when you can gain access to take measurements. We will not be responsible for costs incurred due to ordering incorrect furniture. VIVID Housing Limited is registered in England and Wales as a registered society under the Co-operative and Community Benefit Societies Act 2014 under number 7544 with exempt charity status and as a registered provider of social housing with the Homes and Communities Agency under number 4850. Our registered office is at Peninsular House, Wharf Road, Portsmouth, Hampshire, PO2 8HB. All information correct at time of creation - March 2024.

VIVID

Oaklands Place

Plot 39
2 BEDROOM HOUSE

GROUND FLOOR

Lounge / Dining Room	4.90m x 4.40m (16'-1" x 14'-5")
Kitchen	3.26m x 2.28m (10'-8" x 7'-6")

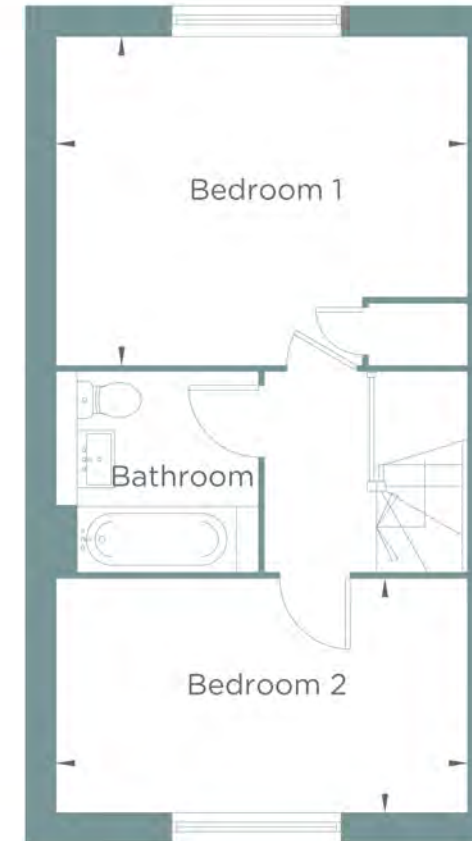
FIRST FLOOR

Bedroom 1	4.40m x 3.48m (14'-5" x 11'-5")
Bedroom 2	4.40m x 2.48m (14'-5" x 8'-2")



*B = Boiler

GROUND FLOOR



FIRST FLOOR

Please note floorplans are not to scale and are indicative only. Total areas are provided as gross internal areas and are subject to variance and these plans do not act as part of a legally binding contract, warranty or guarantee. These plans may not be to scale and dimensions may vary during the build programme. It is common for fixtures and fittings to change during the build programme, for example boilers. Location of windows, doors, kitchen units and appliances may differ. Doors may swing in to the opposite direction to that shown on selected houses. Dimensions, which are taken from the indicated points of measurement are for guidance only and are not intended to be used to calculate the space needed for specific pieces of furniture. If your home is set within a terrace row, the position of the windows may vary from those shown on this plan. The property may also be a handed (mirrored) version of the layout shown here. We advise that you do not order any furniture based on these indicative plans, please wait until you can measure up fully inside the property. Please speak to a member of our sales team about when you can gain access to take measurements. We will not be responsible for costs incurred due to ordering incorrect furniture. VIVID Housing Limited is registered in England and Wales as a registered society under the Co-operative and Community Benefit Societies Act 2014 under number 7544 with exempt charity status and as a registered provider of social housing with the Homes and Communities Agency under number 4850. Our registered office is at Peninsular House, Wharf Road, Portsmouth, Hampshire, PO2 8HB. All information correct at time of creation - March 2024.

VIVID

Oaklands Place

Plot 40
2 BEDROOM HOUSE

GROUND FLOOR

Lounge / Dining Room	4.90m x 4.40m (16'-1" x 14'-5")
Kitchen	3.26m x 2.28m (10'-9" x 7'-6")

FIRST FLOOR

Bedroom 1	4.40m x 3.48m (14'-5" x 11'-5")
Bedroom 2	4.40m x 2.48m (14'-5" x 8'-2")



*B = Boiler

GROUND FLOOR



FIRST FLOOR

Please note floorplans are not to scale and are indicative only. Total areas are provided as gross internal areas and are subject to variance and these plans do not act as part of a legally binding contract, warranty or guarantee. These plans may not be to scale and dimensions may vary during the build programme. It is common for fixtures and fittings to change during the build programme, for example boilers. Location of windows, doors, kitchen units and appliances may differ. Doors may swing in to the opposite direction to that shown on selected houses. Dimensions, which are taken from the indicated points of measurement, are for guidance only and are not intended to be used to calculate the space needed for specific pieces of furniture. If your home is set within a terrace row, the position of the windows may vary from those shown on this plan. The property may also be a handed (mirrored) version of the layout shown here. We advise that you do not order any furniture based on these indicative plans, please wait until you can measure up fully, inside the property. Please speak to a member of our sales team about when you can gain access to take measurements. We will not be responsible for costs incurred due to ordering incorrect furniture. VIVID Housing Limited is registered in England and Wales as a registered society under the Co-operative and Community Benefit Societies Act 2014 under number 7544 with exempt charity status and as a registered provider of social housing with the Homes and Communities Agency under number 4850. Our registered office is at Peninsular House, Wharf Road, Portsmouth, Hampshire, PO2 8HB. All information correct at time of creation - March 2024.

VIVID

Oaklands Place

Plots 26 & 27
2 BEDROOM HOUSE



PLOT 40
FRONT ELEVATION

PLOT 39



PLOT 39
REAR ELEVATION

PLOT 40

Please note floorplans are not to scale and are indicative only, total areas are provided as gross internal areas and are subject to variance and these plans do not act as part of a legally binding contract, warranty or guarantee. These plans may not be to scale and dimensions may vary during the build programme. It is common for fixtures and fittings to change during the build programme, for example boilers. Location of windows, doors, kitchen units and appliances may differ. Doors may swing in to the opposite direction to that shown on selected houses. Dimensions, which are taken from the indicated points of measurement are for guidance only and are not intended to be used to calculate the space needed for specific pieces of furniture. If your home is set within a terrace row, the position of the windows may vary from those shown on this plan. The property may also be a handed (mirrored) version of the layout shown here. We advise that you do not order any furniture based on these indicative plans, please wait until you can measure up fully, inside the property. Please speak to a member of our sales team about when you can gain access to take measurements. We will not be responsible for costs incurred due to ordering incorrect furniture. VIVID Housing Limited is registered in England and Wales as a registered society under the Co-operative and Community Benefit Societies Act 2014 under number 7544 with exempt charity status and as a registered provider of social housing with the Homes and Communities Agency under number 4850. Our registered office is at Peninsular House, Wharf Road, Portsmouth, Hampshire, PO2 8HB. All information correct at time of creation - March 2024.

VIVID

Oaklands Place

Plot 42
3 BEDROOM HOUSE

GROUND FLOOR

Kitchen / Dining Room	5.75m x 2.82m (18'-10" x 9'-3")
Lounge	5.75m x 3.04m (18'-10" x 10'-0")

FIRST FLOOR

Bedroom 1	5.75m x 3.09m (18'-10" x 10'-2")
Bedroom 2	3.08m x 2.77m (10'-1" x 9'-1")
Bedroom 3	3.14m x 2.60m (10'-4" x 8'-6")



GROUND FLOOR



FIRST FLOOR

Please note floorplans are not to scale and are indicative only, total areas are provided as gross internal areas and are subject to variance and these plans do not act as part of a legally binding contract, warranty or guarantee. These plans may not be to scale and dimensions may vary during the build programme, it is common for fixtures and fittings to change during the build programme, for example boilers. Location of windows, doors, kitchen units and appliances may differ. Doors may swing in to the opposite direction to that shown on selected houses. Dimensions, which are taken from the indicated points of measurement are for guidance only and are not intended to be used to calculate the space needed for specific pieces of furniture. If your home is set within a terrace row, the position of the windows may vary from those shown on this plan. The property may also be a handed (mirrored) version of the layout shown here. We advise that you do not order any furniture based on these indicative plans, please wait until you can measure up fully inside the property. Please speak to a member of our sales team about when you can gain access to take measurements. We will not be responsible for costs incurred due to ordering incorrect furniture. VIVID Housing Limited is registered in England and Wales as a registered society under the Co-operative and Community Benefit Societies Act 2014 under number 7544 with exempt charity status and as a registered provider of social housing with the Homes and Communities Agency under number 4850. Our registered office is at Peninsular House, Wharf Road, Portsmouth, Hampshire, PO2 8HB. All information correct at time of creation - February 2024.



Oaklands Place

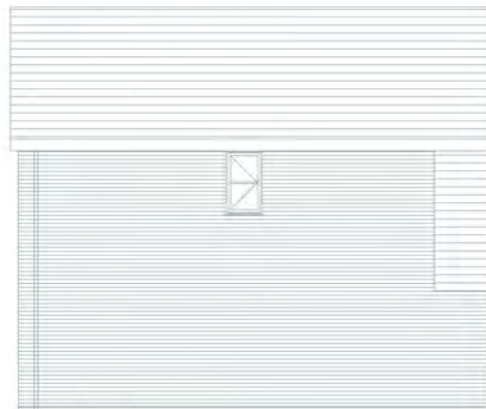
Plot 42
3 BEDROOM HOUSE



PLOT 42
FRONT ELEVATION



PLOT 42
SIDE ELEVATION



PLOT 42
REAR ELEVATION



PLOT 42
SIDE ELEVATION

Please note floorplans are not to scale and are indicative only, total areas are provided as gross internal areas and are subject to variance and these plans do not act as part of a legally binding contract, warranty or guarantee. These plans may not be to scale and dimensions may vary during the build programme. It is common for fixtures and fittings to change during the build programme, for example boilers. Location of windows, doors, kitchen units and appliances may differ. Doors may swing in to the opposite direction to that shown on selected houses. Dimensions, which are taken from the indicated points of measurement, are for guidance only and are not intended to be used to calculate the space needed for specific pieces of furniture. If your home is set within a terrace row, the position of the windows may vary from those shown on this plan. The property may also be a handed (mirrored) version of the layout shown here. We advise that you do not order any furniture based on these indicative plans, please wait until you can measure up fully, inside the property. Please speak to a member of our sales team about when you can gain access to take measurements. We will not be responsible for costs incurred due to ordering incorrect furniture. VIVID Housing Limited is registered in England and Wales as a registered society under the Co-operative and Community Benefit Societies Act 2014 under number 7544 with exempt charity status and as a registered provider of social housing with the Homes and Communities Agency under number 4850. Our registered office is at Peninsular House, Wharf Road, Portsmouth, Hampshire, PO2 8HB. All information correct at time of creation - February 2024.

VIVID

Oaklands Place

Plots 45,46* 2 BEDROOM HOUSE

*Please note that these properties are handed so homes will have the same floor plan but mirrored.

GROUND FLOOR

Lounge / Dining Room	4.90m x 4.40m (16'-1" x 14'-5")
Kitchen	3.26m x 2.28m (18'-10" x 10'-0")

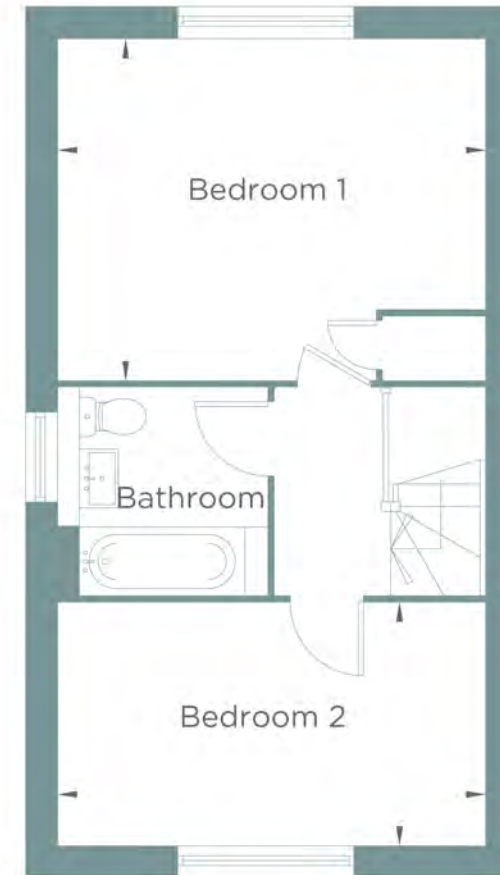
FIRST FLOOR

Bedroom 1	4.40m x 3.48m (14'-15" x 11'-5")
Bedroom 2	4.40m x 2.48m (14'-5" x 8'-2")



GROUND FLOOR

*B = Boiler



FIRST FLOOR

Please note floorplans are not to scale and are indicative only. Total areas are provided as gross internal areas and are subject to variance and these plans do not act as part of a legally binding contract, warranty or guarantee. These plans may not be to scale and dimensions may vary during the build programme. It is common for fixtures and fittings to change during the build programme. For example boilers. Location of windows, doors, kitchen units and appliances may differ. Doors may swing in to the opposite direction to that shown on selected houses. Dimensions, which are taken from the indicated points of measurement are for guidance only and are not intended to be used to calculate the space needed for specific pieces of furniture. If your home is set within a terrace row, the position of the windows may vary from those shown on this plan. The property may also be a handed (mirrored) version of the layout shown here. We advise that you do not order any furniture based on these indicative plans, please wait until you can measure up fully inside the property. Please speak to a member of our sales team about when you can gain access to take measurements. We will not be responsible for costs incurred due to ordering incorrect furniture. VIVID Housing Limited is registered in England and Wales as a registered society under the Co-operative and Community Benefit Societies Act 2014 under number 7544 with exempt charity status and as a registered provider of social housing with the Homes and Communities Agency under number 4850. Our registered office is at Peninsular House, Wharf Road, Portsmouth, Hampshire, PO2 8HB. All information correct at time of creation - February 2024.

VIVID

Oaklands Place

Plots 45,46
2 BEDROOM HOUSE



PLOT 45
SIDE ELEVATION



PLOT 46
SIDE ELEVATION



PLOT 45
FRONT ELEVATION

PLOT 46



PLOT 46
REAR ELEVATION

PLOT 45

Please note floorplans are not to scale and are indicative only, total areas are provided as gross internal areas and are subject to variance and these plans do not act as part of a legally binding contract, warranty or guarantee. These plans may not be to scale and dimensions may vary during the build programme. It is common for fixtures and fittings to change during the build programme, for example boilers Location of windows, doors, kitchen units and appliances may differ. Doors may swing in to the opposite direction to that shown on selected houses. Dimensions, which are taken from the indicated points of measurement are for guidance only and are not intended to be used to calculate the space needed for specific pieces of furniture. If your home is set within a terrace row, the position of the windows may vary from those shown on this plan. The property may also be a handed (mirrored) version of the layout shown here. We advise that you do not order any furniture based on these indicative plans, please wait until you can measure up fully, inside the property. Please speak to a member of our sales team about when you can gain access to take measurements. We will not be responsible for costs incurred due to ordering incorrect furniture. VIVID Housing Limited is registered in England and Wales as a registered society under the Co-operative and Community Benefit Societies Act 2014 under number 7544 with exempt charity status and as a registered provider of social housing with the Homes and Communities Agency under number 4850. Our registered office is at Peninsular House, Wharf Road, Portsmouth, Hampshire, PO2 8HB. All information correct at time of creation - February 2024.

VIVID

Oaklands Place

Plots 47,48* 3 BEDROOM HOUSE

*Please note that these properties are handed so homes will have the same floor plan but mirrored.

GROUND FLOOR

Lounge 5.18m x 2.99m
(17'-0" x 9'-10")

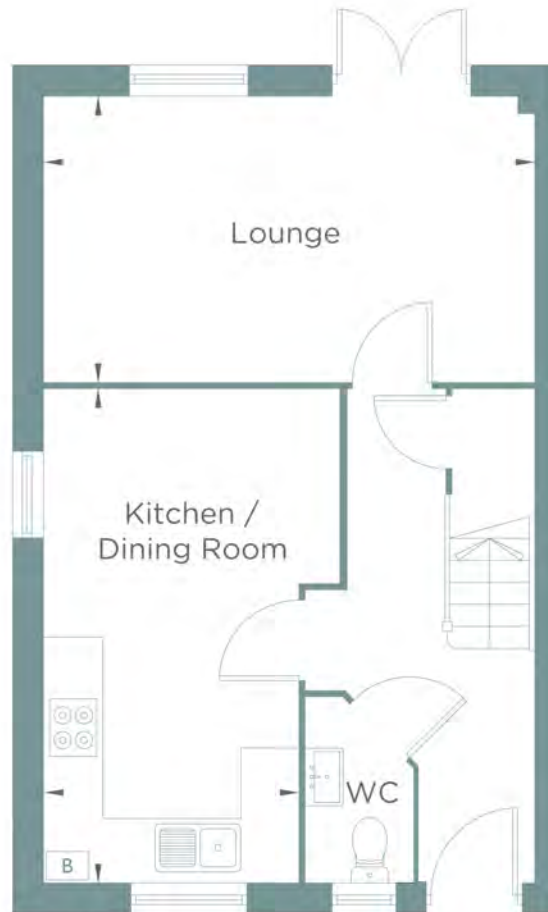
Kitchen / Dining Room 5.16m x 2.69m
(16'-11" x 8'-10")

FIRST FLOOR

Bedroom 1 3.97m x 3.20m
(13'-0" x 10'-6")

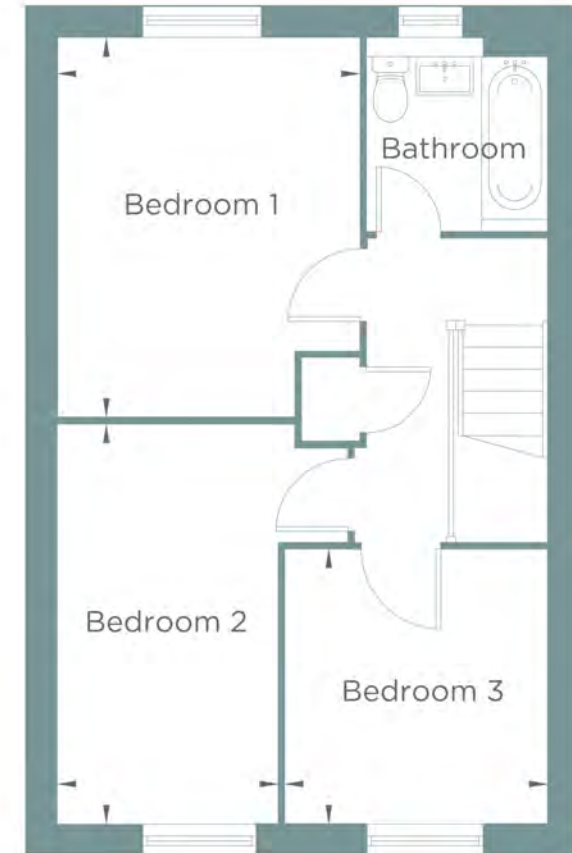
Bedroom 2 4.18m x 2.33m
(13'-9" x 7'-8")

Bedroom 3 2.88m x 2.78m
(9'-5" x 9'-1")



*B = Boiler

GROUND FLOOR



FIRST FLOOR

Please note floorplans are not to scale and are indicative only. Total areas are provided as gross internal areas and are subject to variance and these plans do not act as part of a legally binding contract, warranty or guarantee. These plans may not be to scale and dimensions may vary during the build programme. It is common for fixtures and fittings to change during the build programme, for example boilers. Location of windows, doors, kitchen units and appliances may differ. Doors may swing in to the opposite direction to that shown on selected houses. Dimensions, which are taken from the indicated points of measurement are for guidance only and are not intended to be used to calculate the space needed for specific pieces of furniture. If your home is set within a terrace row, the position of the windows may vary from those shown on this plan. The property may also be a handed (mirrored) version of the layout shown here. We advise that you do not order any furniture based on these indicative plans, please wait until you can measure up fully inside the property. Please speak to a member of our sales team about when you can gain access to take measurements. We will not be responsible for costs incurred due to ordering incorrect furniture. VIVID Housing Limited is registered in England and Wales as a registered society under the Co-operative and Community Benefit Societies Act 2014 under number 7544 with exempt charity status and as a registered provider of social housing with the Homes and Communities Agency under number 4850. Our registered office is at Peninsular House, Wharf Road, Portsmouth, Hampshire, PO2 8HB. All information correct at time of creation - February 2024.

Oaklands Place

Plots 47,48
3 BEDROOM HOUSE



PLOT 47
SIDE ELEVATION



PLOT 48
SIDE ELEVATION



PLOT 47
FRONT ELEVATION

PLOT 48



PLOT 48
REAR ELEVATION

PLOT 47

Please note floorplans are not to scale and are indicative only, total areas are provided as gross internal areas and are subject to variance and these plans do not act as part of a legally binding contract, warranty or guarantee. These plans may not be to scale and dimensions may vary during the build programme. It is common for fixtures and fittings to change during the build programme, for example boilers. Location of windows, doors, kitchen units and appliances may differ. Doors may swing in to the opposite direction to that shown on selected houses. Dimensions, which are taken from the indicated points of measurement, are for guidance only and are not intended to be used to calculate the space needed for specific pieces of furniture. If your home is set within a terrace row, the position of the windows may vary from those shown on this plan. The property may also be a handed (mirrored) version of the layout shown here. We advise that you do not order any furniture based on these indicative plans, please wait until you can measure up fully, inside the property. Please speak to a member of our sales team about when you can gain access to take measurements. We will not be responsible for costs incurred due to ordering incorrect furniture. VIVID Housing Limited is registered in England and Wales as a registered society under the Co-operative and Community Benefit Societies Act 2014 under number 7544 with exempt charity status and as a registered provider of social housing with the Homes and Communities Agency under number 4850. Our registered office is at Peninsular House, Wharf Road, Portsmouth, Hampshire, PO2 8HB. All information correct at time of creation - February 2024.

VIVID

Oaklands Place

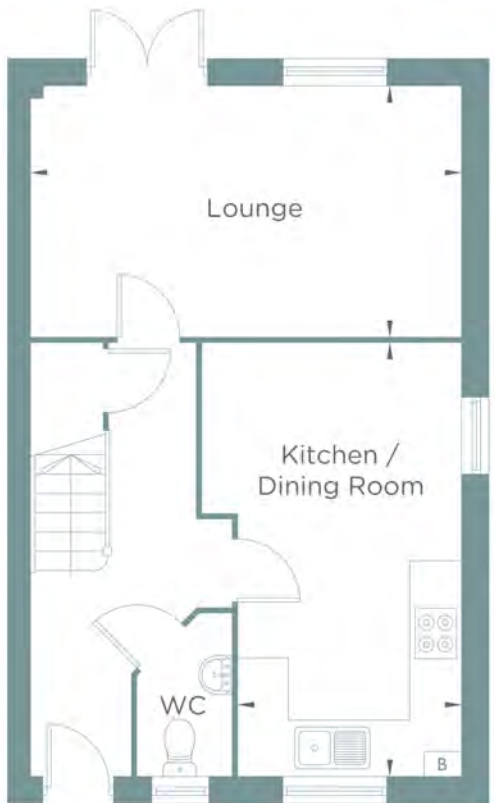
Plot 52
3 BEDROOM HOUSE

GROUND FLOOR

Lounge	5.18m x 2.99m (17'-0" x 9'-10")
Kitchen / Dining Room	5.16m x 2.69m (16'-11" x 8'-10")

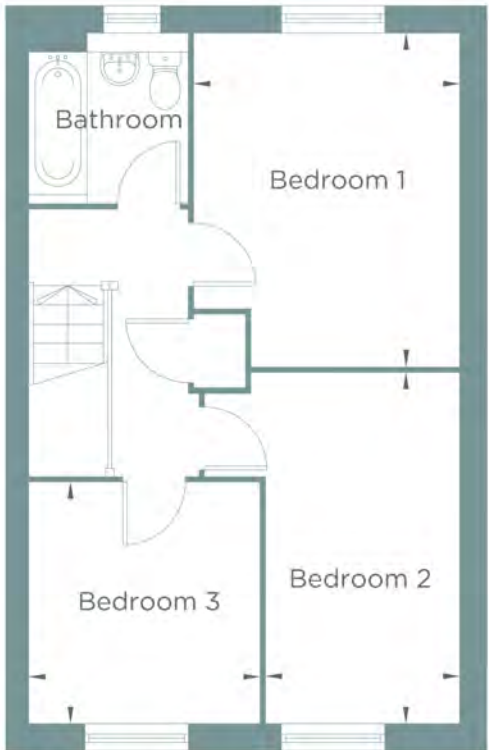
FIRST FLOOR

Bedroom 1	3.97m x 3.20m (13'-0" x 10'-6")
Bedroom 2	4.18m x 2.33m (13'-9" x 7'-8")
Bedroom 3	2.88m x 2.78m (9'-5" x 9'-1")



GROUND FLOOR

*B = Boiler



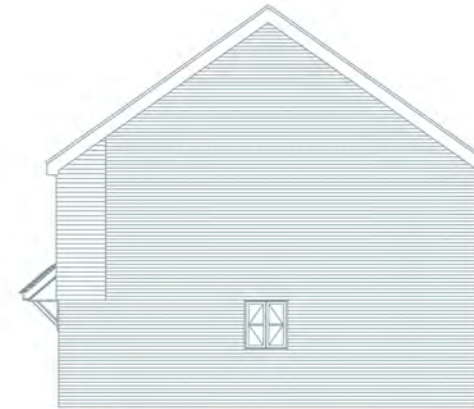
FIRST FLOOR

Please note floorplans are not to scale and are indicative only. Total areas are provided as gross internal areas and are subject to variance and these plans do not act as part of a legally binding contract, warranty or guarantee. These plans may not be to scale and dimensions may vary during the build programme. It is common for fixtures and fittings to change during the build programme, for example boilers. Location of windows, doors, kitchen units and appliances may differ. Doors may swing in to the opposite direction to that shown on selected houses. Dimensions, which are taken from the indicated points of measurement are for guidance only and are not intended to be used to calculate the space needed for specific pieces of furniture. If your home is set within a terrace row, the position of the windows may vary from those shown on this plan. The property may also be a handed (mirrored) version of the layout shown here. We advise that you do not order any furniture based on these indicative plans, please wait until you can measure up fully inside the property. Please speak to a member of our sales team about when you can gain access to take measurements. We will not be responsible for costs incurred due to ordering incorrect furniture. VIVID Housing Limited is registered in England and Wales as a registered society under the Co-operative and Community Benefit Societies Act 2014 under number 7544 with exempt charity status and as a registered provider of social housing with the Homes and Communities Agency under number 4850. Our registered office is at Peninsular House, Wharf Road, Portsmouth, Hampshire, PO2 8HB. All information correct at time of creation - February 2024.

VIVID

Oaklands Place

Plot 52
3 BEDROOM HOUSE



PLOT 52
SIDE ELEVATION



PLOT 52
FRONT ELEVATION



PLOT 52
REAR ELEVATION

Please note floorplans are not to scale and are indicative only, total areas are provided as gross internal areas and are subject to variance and these plans do not act as part of a legally binding contract, warranty or guarantee. These plans may not be to scale and dimensions may vary during the build programme. It is common for fixtures and fittings to change during the build programme, for example boilers. Location of windows, doors, kitchen units and appliances may differ. Doors may swing in to the opposite direction to that shown on selected houses. Dimensions, which are taken from the indicated points of measurement, are for guidance only and are not intended to be used to calculate the space needed for specific pieces of furniture. If your home is set within a terrace row, the position of the windows may vary from those shown on this plan. The property may also be a handed (mirrored) version of the layout shown here. We advise that you do not order any furniture based on these indicative plans, please wait until you can measure up fully, inside the property. Please speak to a member of our sales team about when you can gain access to take measurements. We will not be responsible for costs incurred due to ordering incorrect furniture. VIVID Housing Limited is registered in England and Wales as a registered society under the Co-operative and Community Benefit Societies Act 2014 under number 7544 with exempt charity status and as a registered provider of social housing with the Homes and Communities Agency under number 4850. Our registered office is at Peninsular House, Wharf Road, Portsmouth, Hampshire, PO2 8HB. All information correct at time of creation - February 2024.

VIVID

Oaklands Place

Plots 53, 54* 2 BEDROOM HOUSE

*Please note that these properties are handed so homes will have the same floor plan but mirrored.

GROUND FLOOR

Lounge / Dining Room 4.90m x 4.40m
(16'-1" x 14'-5")

Kitchen 3.26m x 2.28m
(10'-8" x 7'-6")

FIRST FLOOR

Bedroom 1 4.40m x 3.48m
(14'-5" x 11'-5")

Bedroom 2 4.40m x 2.48m
(14'-5" x 8'-2")



GROUND FLOOR

*B = Boiler



FIRST FLOOR

Please note floorplans are not to scale and are indicative only. Total areas are provided as gross internal areas and are subject to variance and these plans do not act as part of a legally binding contract, warranty or guarantee. These plans may not be to scale and dimensions may vary during the build programme. It is common for fixtures and fittings to change during the build programme. For example boilers. Location of windows, doors, kitchen units and appliances may differ. Doors may swing in to the opposite direction to that shown on selected houses. Dimensions, which are taken from the indicated points of measurement are for guidance only and are not intended to be used to calculate the space needed for specific pieces of furniture. If your home is set within a terrace row, the position of the windows may vary from those shown on this plan. The property may also be a handed (mirrored) version of the layout shown here. We advise that you do not order any furniture based on these indicative plans, please wait until you can measure up fully inside the property. Please speak to a member of our sales team about when you can gain access to take measurements. We will not be responsible for costs incurred due to ordering incorrect furniture. VIVID Housing Limited is registered in England and Wales as a registered society under the Co-operative and Community Benefit Societies Act 2014 under number 7544 with exempt charity status and as a registered provider of social housing with the Homes and Communities Agency under number 4850. Our registered office is at Peninsular House, Wharf Road, Portsmouth, Hampshire, PO2 8HB. All information correct at time of creation - February 2024.

VIVID

Oaklands Place

Plots 53, 54
2 BEDROOM HOUSE



PLOT 53
SIDE ELEVATION



PLOT 54
SIDE ELEVATION



PLOT 53
FRONT ELEVATION

PLOT 54



PLOT 54
REAR ELEVATION

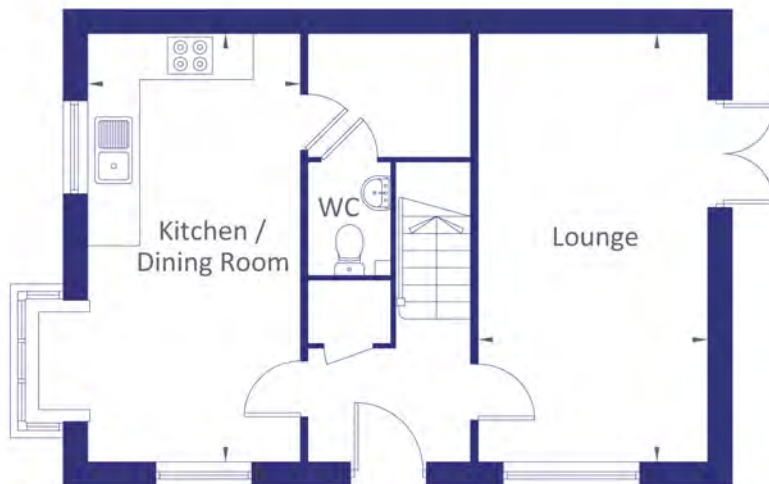
PLOT 53

Please note floorplans are not to scale and are indicative only, total areas are provided as gross internal areas and are subject to variance and these plans do not act as part of a legally binding contract, warranty or guarantee. These plans may not be to scale and dimensions may vary during the build programme. It is common for fixtures and fittings to change during the build programme, for example boilers. Location of windows, doors, kitchen units and appliances may differ. Doors may swing in to the opposite direction to that shown on selected houses. Dimensions, which are taken from the indicated points of measurement, are for guidance only and are not intended to be used to calculate the space needed for specific pieces of furniture. If your home is set within a terrace row, the position of the windows may vary from those shown on this plan. The property may also be a handed (mirrored) version of the layout shown here. We advise that you do not order any furniture based on these indicative plans, please wait until you can measure up fully, inside the property. Please speak to a member of our sales team about when you can gain access to take measurements. We will not be responsible for costs incurred due to ordering incorrect furniture. VIVID Housing Limited is registered in England and Wales as a registered society under the Co-operative and Community Benefit Societies Act 2014 under number 7544 with exempt charity status and as a registered provider of social housing with the Homes and Communities Agency under number 4850. Our registered office is at Peninsular House, Wharf Road, Portsmouth, Hampshire, PO2 8HB. All information correct at time of creation - February 2024.

VIVID

Oaklands Place

Plot 56
3 Bedroom House



*B = Boiler

GROUND FLOOR



FIRST FLOOR

GROUND FLOOR

Lounge
5.75m [18'-10"] x 3.37m [11'-1"]

Kitchen / Dining Room
5.75m [18'-10"] x 2.82m [9'-3"]

FIRST FLOOR

Bedroom 1
5.75m [18'-10"] x 3.09m [10'-2"]

Bedroom 2
3.08m [10'-1"] x 2.77m [9'-1"]

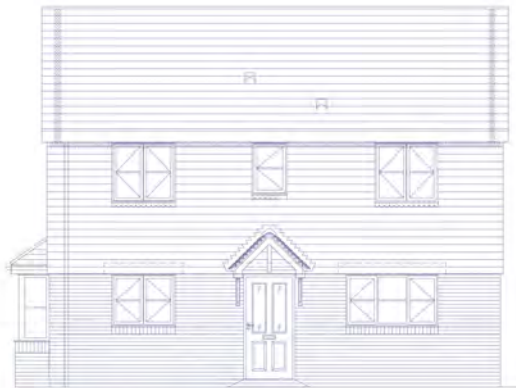
Bedroom 3
3.01m [10'-1"] x 2.60m [8'-6"]

www.yourvividhome.co.uk
[@WeAreVIVIDsales](https://www.instagram.com/WeAreVIVIDsales)

Please note floorplans are not to scale and are indicative only, total areas are provided as gross internal areas and are subject to variance and these plans do not act as part of a legally binding contract, warranty or guarantee. These plans may not be to scale and dimensions may vary during the build programme. It is common for fixtures and fittings to change during the build programme, for example boilers. Location of windows, doors, kitchen units and appliances may differ. Doors may swing in to the opposite direction to that shown on selected houses. Dimensions, which are taken from the indicated points of measurement are for guidance only and are not intended to be used to calculate the space needed for specific pieces of furniture. If your home is set within a terrace row, the position of the windows may vary from those shown on this plan. The property may also be a handed (mirrored) version of the layout shown here. We advise that you do not order any furniture based on these indicative plans, please wait until you can measure up fully, inside the property. Please speak to a member of our sales team about when you can gain access to take measurements. We will not be responsible for costs incurred due to ordering incorrect furniture. VIVID Housing Limited is registered in England and Wales as a registered society under the Co-operative and Community Benefit Societies Act 2014 under number 7544 with exempt charity status and as a registered provider of social housing with the Homes and Communities Agency under number 4850. Our registered office is at Peninsular House, Wharf Road, Portsmouth, Hampshire, PO2 8HB. All information correct at time of creation – July 2023.

Oaklands Place

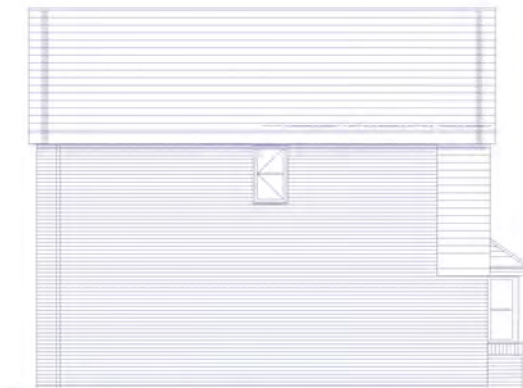
Plot 56
3 Bedroom House



FRONT ELEVATION



SIDE ELEVATION



REAR ELEVATION



SIDE ELEVATION

www.yourvividhome.co.uk
@WeAreVIVIDsales

Please note floorplans are not to scale and are indicative only, total areas are provided as gross internal areas and are subject to variance and these plans do not act as part of a legally binding contract, warranty or guarantee. These plans may not be to scale and dimensions may vary during the build programme. It is common for fixtures and fittings to change during the build programme, for example boilers. Location of windows, doors, kitchen units and appliances may differ. Doors may swing in to the opposite direction to that shown on selected houses. Dimensions, which are taken from the indicated points of measurement are for guidance only and are not intended to be used to calculate the space needed for specific pieces of furniture. If your home is set within a terrace row, the position of the windows may vary from those shown on this plan. The property may also be a handed (mirrored) version of the layout shown here. We advise that you do not order any furniture based on these indicative plans, please wait until you can measure up fully, inside the property. Please speak to a member of our sales team about when you can gain access to take measurements. We will not be responsible for costs incurred due to ordering incorrect furniture. VIVID Housing Limited is registered in England and Wales as a registered society under the Co-operative and Community Benefit Societies Act 2014 under number 7544 with exempt charity status and as a registered provider of social housing with the Homes and Communities Agency under number 4850. Our registered office is at Peninsular House, Wharf Road, Portsmouth, Hampshire, PO2 8HB. All information correct at time of creation – July 2023.

Oaklands Place

Plots 57, 58* 3 BEDROOM HOUSE

*Please note that these properties are handed so homes will have the same floor plan but mirrored.

GROUND FLOOR

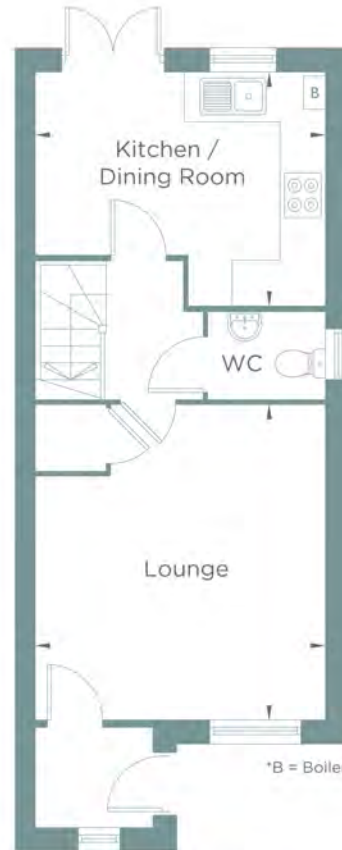
Dining Room / Kitchen	3.97m x 3.17m (13'-0" x 10'-5")
Lounge	4.27m x 3.97m (14'-0" x 13'-10")

FIRST FLOOR

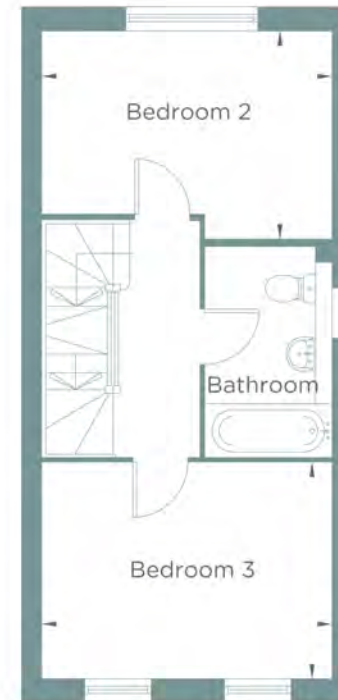
Bedroom 2	3.97m x 2.83m (13'-0" x 9'-3")
Bedroom 3	3.97m x 2.94m (13'-0" x 9'-8")

SECOND FLOOR

Bedroom 1	5.65m x 3.97m (18'-6" x 13'-0")
-----------	------------------------------------



GROUND FLOOR



FIRST FLOOR



SECOND FLOOR

Please note floorplans are not to scale and are indicative only. Total areas are provided as gross internal areas and are subject to variance and these plans do not act as part of a legally binding contract, warranty or guarantee. These plans may not be to scale and dimensions may vary during the build programme. It is common for fixtures and fittings to change during the build programme, for example boilers. Location of windows, doors, kitchen units and appliances may differ. Doors may swing in the opposite direction to that shown on selected houses. Dimensions, which are taken from the indicated points of measurement are for guidance only and are not intended to be used to calculate the space needed for specific pieces of furniture. If your home is set within a terrace row, the position of the windows may vary from those shown on this plan. The property may also be a handed (mirrored) version of the layout shown here. We advise that you do not order any furniture based on these indicative plans, please wait until you can measure up fully, inside the property. Please speak to a member of our sales team about when you can gain access to take measurements. We will not be responsible for costs incurred due to ordering incorrect furniture. VIVID Housing Limited is registered in England and Wales as a registered society under the Co-operative and Community Benefit Societies Act 2014 under number 7544 with exempt charity status and as a registered provider of social housing with the Homes and Communities Agency under number 4850. Our registered office is at Peninsular House, Wharf Road, Portsmouth, Hampshire, PO2 8HB. All information correct at time of creation - February 2024.

VIVID

Oaklands Place

Plots 57, 58
3 BEDROOM HOUSE



PLOT 58
SIDE ELEVATION



PLOT 57
SIDE ELEVATION



PLOT 58
FRONT ELEVATION



PLOT 57
REAR ELEVATION

PLOT 57

PLOT 58

Please note floorplans are not to scale and are indicative only, total areas are provided as gross internal areas and are subject to variance and these plans do not act as part of a legally binding contract, warranty or guarantee. These plans may not be to scale and dimensions may vary during the build programme. It is common for fixtures and fittings to change during the build programme, for example boilers. Location of windows, doors, kitchen units and appliances may differ. Doors may swing in to the opposite direction to that shown on selected houses. Dimensions, which are taken from the indicated points of measurement are for guidance only and are not intended to be used to calculate the space needed for specific pieces of furniture. If your home is set within a terrace row, the position of the windows may vary from those shown on this plan. The property may also be a handed (mirrored) version of the layout shown here. We advise that you do not order any furniture based on these indicative plans, please wait until you can measure up fully, inside the property. Please speak to a member of our sales team about when you can gain access to take measurements. We will not be responsible for costs incurred due to ordering incorrect furniture. VIVID Housing Limited is registered in England and Wales as a registered society under the Co-operative and Community Benefit Societies Act 2014 under number 7544 with exempt charity status and as a registered provider of social housing with the Homes and Communities Agency under number 4850. Our registered office is at Peninsular House, Wharf Road, Portsmouth, Hampshire, PO2 8HB. All information correct at time of creation - February 2024.

VIVID

Oaklands Place

Plot 65
3 BEDROOM HOUSE

GROUND FLOOR

Lounge	5.18m x 2.99m (17'-0" x 9'-10")
--------	------------------------------------

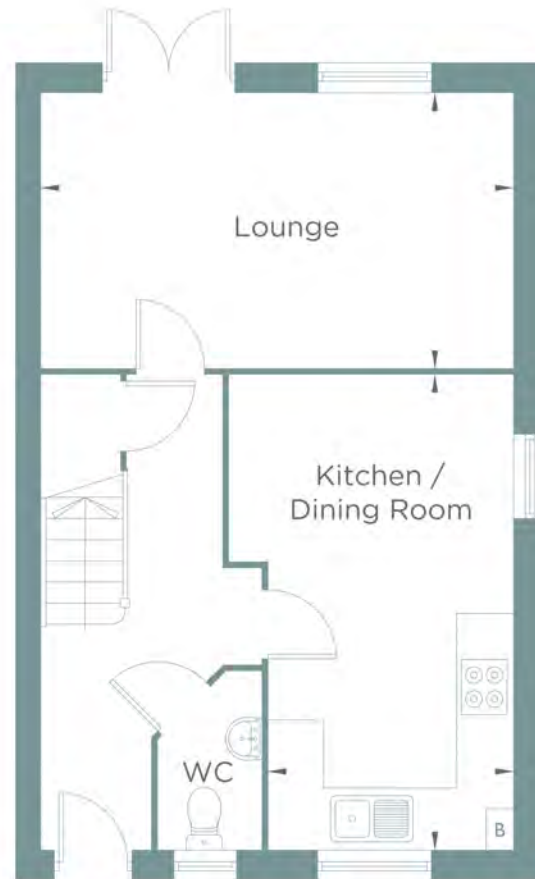
Kitchen / Dining Room	5.16m x 2.69m (16'-11" x 8'-10")
-----------------------	-------------------------------------

FIRST FLOOR

Bedroom 1	3.97m x 3.20m (13'-0" x 10'-6")
-----------	------------------------------------

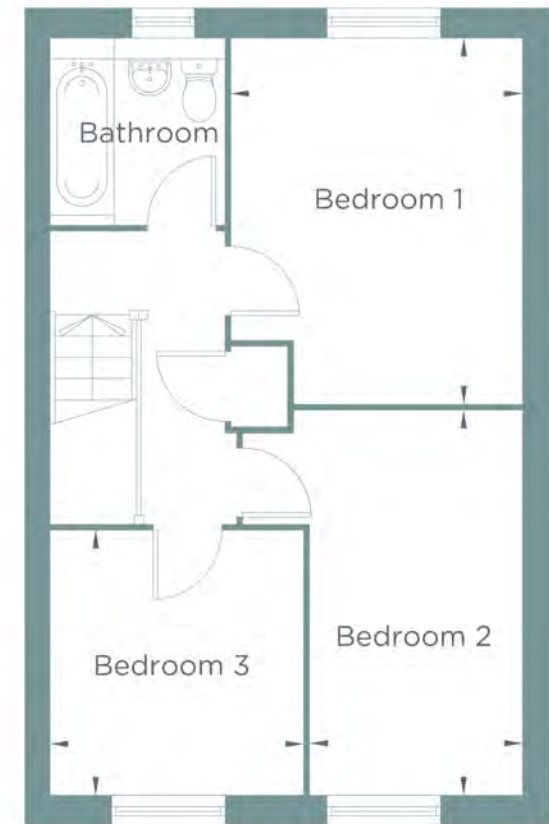
Bedroom 2	4.18m x 2.33m (13'-9" x 7'-8")
-----------	-----------------------------------

Bedroom 2	2.88m x 2.78m (9'-5" x 9'-1")
-----------	----------------------------------



GROUND FLOOR

*B = Boiler



FIRST FLOOR

Please note floorplans are not to scale and are indicative only. Total areas are provided as gross internal areas and are subject to variance and these plans do not act as part of a legally binding contract, warranty or guarantee. These plans may not be to scale and dimensions may vary during the build programme. It is common for fixtures and fittings to change during the build programme, for example boilers. Location of windows, doors, kitchen units and appliances may differ. Doors may swing in to the opposite direction to that shown on selected houses. Dimensions, which are taken from the indicated points of measurement are for guidance only and are not intended to be used to calculate the space needed for specific pieces of furniture. If your home is set within a terrace row, the position of the windows may vary from those shown on this plan. The property may also be a handed (mirrored) version of the layout shown here. We advise that you do not order any furniture based on these indicative plans, please wait until you can measure up fully inside the property. Please speak to a member of our sales team about when you can gain access to take measurements. We will not be responsible for costs incurred due to ordering incorrect furniture. VIVID Housing Limited is registered in England and Wales as a registered society under the Co-operative and Community Benefit Societies Act 2014 under number 7544 with exempt charity status and as a registered provider of social housing with the Homes and Communities Agency under number 4850. Our registered office is at Peninsular House, Wharf Road, Portsmouth, Hampshire, PO2 8HB. All information correct at time of creation - February 2024.

VIVID

Oaklands Place

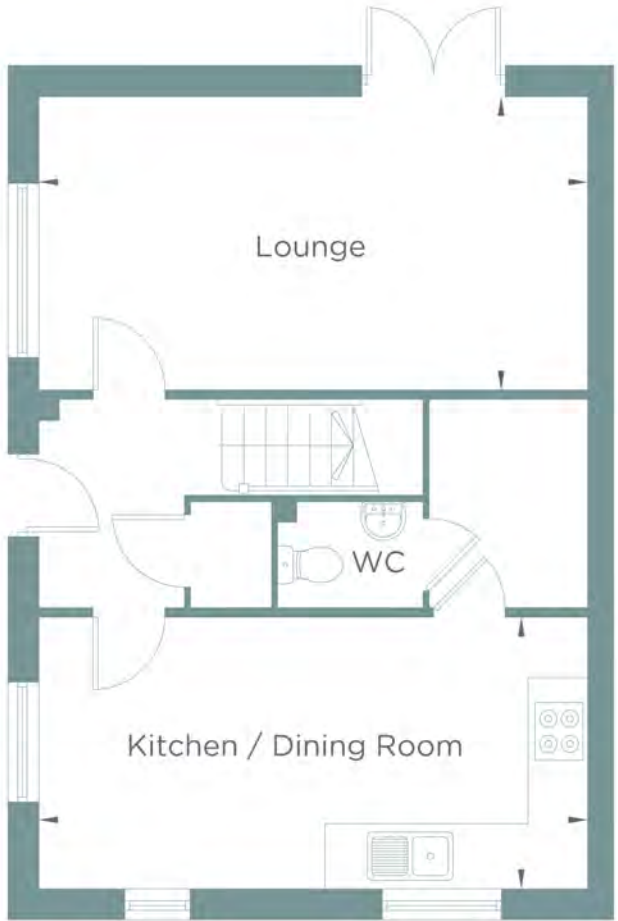
Plot 66
3 BEDROOM HOUSE

GROUND FLOOR

Lounge	5.75m x 3.04m (18'-10" x 10'-0")
Kitchen / Dining Room	5.75m x 2.82m (18'-10" x 9'-3")

FIRST FLOOR

Bedroom 1	5.75m x 3.09m (18'-10" x 10'-2")
Bedroom 2	3.08m x 2.77m (10'-1" x 9'-1")
Bedroom 3	3.01m x 2.60m (9'-11" x 8'-6")



GROUND FLOOR



FIRST FLOOR

Please note floorplans are not to scale and are indicative only. Total areas are provided as gross internal areas and are subject to variance and these plans do not act as part of a legally binding contract, warranty or guarantee. These plans may not be to scale and dimensions may vary during the build programme. It is common for fixtures and fittings to change during the build programme, for example boilers. Location of windows, doors, kitchen units and appliances may differ. Doors may swing in the opposite direction to that shown on selected houses. Dimensions, which are taken from the indicated points of measurement are for guidance only and are not intended to be used to calculate the space needed for specific pieces of furniture. If your home is set within a terrace row, the position of the windows may vary from those shown on this plan. The property may also be a handed (mirrored) version of the layout shown here. We advise that you do not order any furniture based on these indicative plans, please wait until you can measure up fully inside the property. Please speak to a member of our sales team about when you can gain access to take measurements. We will not be responsible for costs incurred due to ordering incorrect furniture. VIVID Housing Limited is registered in England and Wales as a registered society under the Co-operative and Community Benefit Societies Act 2014 under number 7544 with exempt charity status and as a registered provider of social housing with the Homes and Communities Agency under number 4850. Our registered office is at Peninsular House, Wharf Road, Portsmouth, Hampshire, PO2 8HB. All information correct at time of creation - February 2024.



Oaklands Place

Plots 65,66
3 BEDROOM HOUSE



PLOT 65
REAR ELEVATION

PLOT 66
REAR ELEVATION



PLOT 65
SIDE ELEVATION



PLOT 66
SIDE ELEVATION

PLOT 65
FRONT ELEVATION



PLOT 66
FRONT ELEVATION

Please note floorplans are not to scale and are indicative only, total areas are provided as gross internal areas and are subject to variance and these plans do not act as part of a legally binding contract, warranty or guarantee. These plans may not be to scale and dimensions may vary during the build programme. It is common for fixtures and fittings to change during the build programme, for example boilers. Location of windows, doors, kitchen units and appliances may differ. Doors may swing in to the opposite direction to that shown on selected houses. Dimensions, which are taken from the indicated points of measurement are for guidance only and are not intended to be used to calculate the space needed for specific pieces of furniture. If your home is set within a terrace row, the position of the windows may vary from those shown on this plan. The property may also be a handed (mirrored) version of the layout shown here. We advise that you do not order any furniture based on these indicative plans, please wait until you can measure up fully, inside the property. Please speak to a member of our sales team about when you can gain access to take measurements. We will not be responsible for costs incurred due to ordering incorrect furniture. VIVID Housing Limited is registered in England and Wales as a registered society under the Co-operative and Community Benefit Societies Act 2014 under number 7544 with exempt charity status and as a registered provider of social housing with the Homes and Communities Agency under number 4850. Our registered office is at Peninsular House, Wharf Road, Portsmouth, Hampshire, PO2 8HB. All information correct at time of creation - February 2024.

VIVID

Oaklands Place

Plot 67
2 BEDROOM HOUSE

GROUND FLOOR

Lounge / Dining Room	4.90m x 4.40m (16'-1" x 14'-5")
Kitchen	3.26m x 2.28m (10'-9" x 7'-6")

FIRST FLOOR

Bedroom 1	4.40m x 3.48m (14'-5" x 11'-5")
Bedroom 2	4.40m x 2.48m (14'-5" x 8'-2")



GROUND FLOOR

*B = Boiler



FIRST FLOOR

Please note floorplans are not to scale and are indicative only. Total areas are provided as gross internal areas and are subject to variance and these plans do not act as part of a legally binding contract, warranty or guarantee. These plans may not be to scale and dimensions may vary during the build programme. It is common for fixtures and fittings to change during the build programme, for example boilers. Location of windows, doors, kitchen units and appliances may differ. Doors may swing in to the opposite direction to that shown on selected houses. Dimensions, which are taken from the indicated points of measurement are for guidance only and are not intended to be used to calculate the space needed for specific pieces of furniture. If your home is set within a terrace row, the position of the windows may vary from those shown on this plan. The property may also be a handed (mirrored) version of the layout shown here. We advise that you do not order any furniture based on these indicative plans, please wait until you can measure up fully inside the property. Please speak to a member of our sales team about when you can gain access to take measurements. We will not be responsible for costs incurred due to ordering incorrect furniture. VIVID Housing Limited is registered in England and Wales as a registered society under the Co-operative and Community Benefit Societies Act 2014 under number 7544 with exempt charity status and as a registered provider of social housing with the Homes and Communities Agency under number 4850. Our registered office is at Peninsular House, Wharf Road, Portsmouth, Hampshire, PO2 8HB. All information correct at time of creation - February 2024.



Oaklands Place

Plot 67
2 BEDROOM HOUSE



PLOT 67
REAR ELEVATION



PLOT 67
SIDE ELEVATION



PLOT 67
FRONT ELEVATION

Please note floorplans are not to scale and are indicative only, total areas are provided as gross internal areas and are subject to variance and these plans do not act as part of a legally binding contract, warranty or guarantee. These plans may not be to scale and dimensions may vary during the build programme. It is common for fixtures and fittings to change during the build programme, for example boilers. Location of windows, doors, kitchen units and appliances may differ. Doors may swing in to the opposite direction to that shown on selected houses. Dimensions, which are taken from the indicated points of measurement are for guidance only and are not intended to be used to calculate the space needed for specific pieces of furniture. If your home is set within a terrace row, the position of the windows may vary from those shown on this plan. The property may also be a handed (mirrored) version of the layout shown here. We advise that you do not order any furniture based on these indicative plans, please wait until you can measure up fully, inside the property. Please speak to a member of our sales team about when you can gain access to take measurements. We will not be responsible for costs incurred due to ordering incorrect furniture. VIVID Housing Limited is registered in England and Wales as a registered society under the Co-operative and Community Benefit Societies Act 2014 under number 7544 with exempt charity status and as a registered provider of social housing with the Homes and Communities Agency under number 4850. Our registered office is at Peninsular House, Wharf Road, Portsmouth, Hampshire, PO2 8HB. All information correct at time of creation - February 2024.

VIVID

Oaklands Place

Plots 70*, 71 3 BEDROOM HOUSE

*Please note that these properties are handed so homes will have the same floor plan but mirrored.

GROUND FLOOR

Lounge 5.18m x 2.99m
(17'-0" x 9'-10")

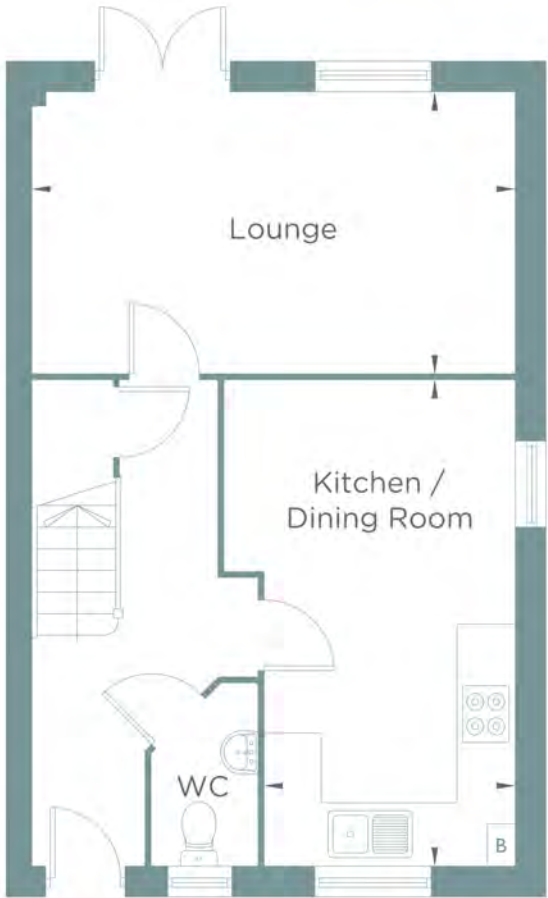
Kitchen / Dining Room 5.16m x 2.69m
(16'-11" x 8'-10")

FIRST FLOOR

Bedroom 1 3.97m x 3.20m
(13'-0" x 10'-6")

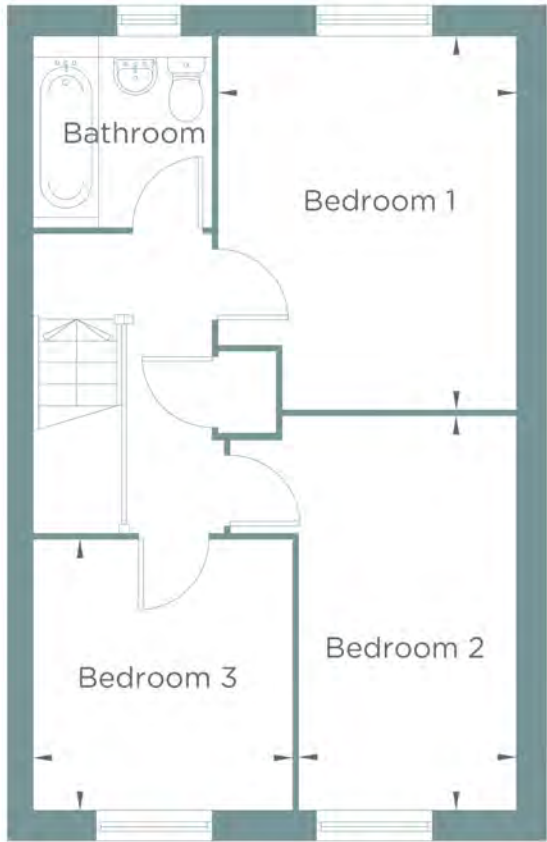
Bedroom 2 4.18m x 2.33m
(13'-9" x 7'-8")

Bedroom 3 2.88m x 2.78m
(9'-5" x 9'-1")



GROUND FLOOR

*B = Boiler



FIRST FLOOR

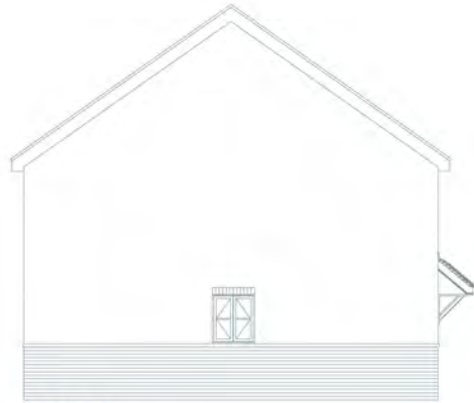
Please note floorplans are not to scale and are indicative only. Total areas are provided as gross internal areas and are subject to variance and these plans do not act as part of a legally binding contract, warranty or guarantee. These plans may not be to scale and dimensions may vary during the build programme. It is common for fixtures and fittings to change during the build programme. For example boilers. Location of windows, doors, kitchen units and appliances may differ. Doors may swing in to the opposite direction to that shown on selected houses. Dimensions, which are taken from the indicated points of measurement are for guidance only and are not intended to be used to calculate the space needed for specific pieces of furniture. If your home is set within a terrace row, the position of the windows may vary from those shown on this plan. The property may also be a handed (mirrored) version of the layout shown here. We advise that you do not order any furniture based on these indicative plans, please wait until you can measure up fully inside the property. Please speak to a member of our sales team about when you can gain access to take measurements. We will not be responsible for costs incurred due to ordering incorrect furniture. VIVID Housing Limited is registered in England and Wales as a registered society under the Co-operative and Community Benefit Societies Act 2014 under number 7544 with exempt charity status and as a registered provider of social housing with the Homes and Communities Agency under number 4850. Our registered office is at Peninsular House, Wharf Road, Portsmouth, Hampshire, PO2 8HB. All information correct at time of creation - February 2024.

VIVID

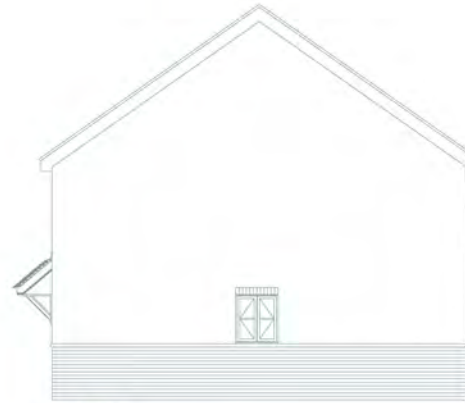
Oaklands Place

Plots 70*, 71 3 BEDROOM HOUSE

*Please note that these properties are handed so homes will have the same floor plan but mirrored.



PLOT 70
SIDE ELEVATION



PLOT 71
SIDE ELEVATION



PLOT 70
FRONT ELEVATION

PLOT 71



PLOT 71
REAR ELEVATION

PLOT 70

Please note floorplans are not to scale and are indicative only, total areas are provided as gross internal areas and are subject to variance and these plans do not act as part of a legally binding contract, warranty or guarantee. These plans may not be to scale and dimensions may vary during the build programme. It is common for fixtures and fittings to change during the build programme, for example boilers. Location of windows, doors, kitchen units and appliances may differ. Doors may swing in to the opposite direction to that shown on selected houses. Dimensions, which are taken from the indicated points of measurement are for guidance only and are not intended to be used to calculate the space needed for specific pieces of furniture. If your home is set within a terrace row, the position of the windows may vary from those shown on this plan. The property may also be a handed (mirrored) version of the layout shown here. We advise that you do not order any furniture based on these indicative plans, please wait until you can measure up fully, inside the property. Please speak to a member of our sales team about when you can gain access to take measurements. We will not be responsible for costs incurred due to ordering incorrect furniture. VIVID Housing Limited is registered in England and Wales as a registered society under the Co-operative and Community Benefit Societies Act 2014 under number 7544 with exempt charity status and as a registered provider of social housing with the Homes and Communities Agency under number 4850. Our registered office is at Peninsular House, Wharf Road, Portsmouth, Hampshire, PO2 8HB. All information correct at time of creation - February 2024.

VIVID

Oaklands Place

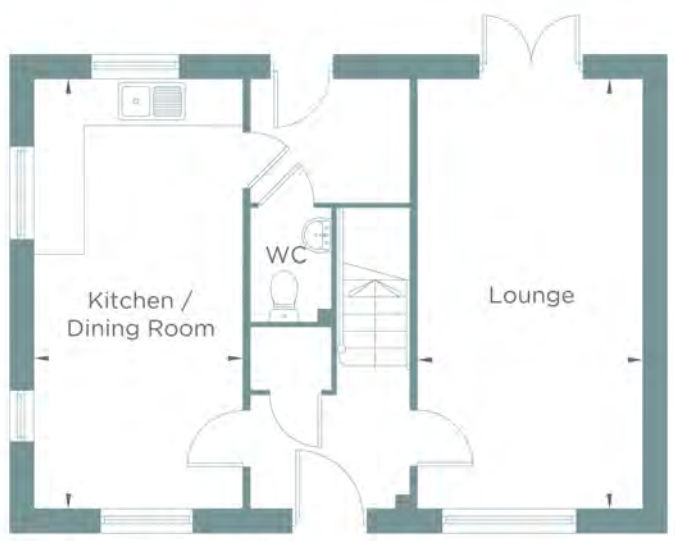
Plot 76
3 BEDROOM HOUSE

GROUND FLOOR

Lounge	5.75m x 2.82m (18'-10" x 9'-3")
Kitchen / Dining Room	5.75m x 3.04m (18'-10" x 10'-0")

FIRST FLOOR

Bedroom 1	5.75m x 3.09m (18'-10" x 10'-2")
Bedroom 2	3.08m x 2.77m (10'-1" x 9'-1")
Bedroom 3	3.14m x 2.60m (10'-4" x 8'-6")



GROUND FLOOR



FIRST FLOOR

Please note floorplans are not to scale and are indicative only. Total areas are provided as gross internal areas and are subject to variance and these plans do not act as part of a legally binding contract, warranty or guarantee. These plans may not be to scale and dimensions may vary during the build programme. It is common for fixtures and fittings to change during the build programme, for example boilers. Location of windows, doors, kitchen units and appliances may differ. Doors may swing in to the opposite direction to that shown on selected houses. Dimensions, which are taken from the indicated points of measurement are for guidance only and are not intended to be used to calculate the space needed for specific pieces of furniture. If your home is set within a terrace row, the position of the windows may vary from those shown on this plan. The property may also be a handed (mirrored) version of the layout shown here. We advise that you do not order any furniture based on these indicative plans, please wait until you can measure up fully inside the property. Please speak to a member of our sales team about when you can gain access to take measurements. We will not be responsible for costs incurred due to ordering incorrect furniture. VIVID Housing Limited is registered in England and Wales as a registered society under the Co-operative and Community Benefit Societies Act 2014 under number 7544 with exempt charity status and as a registered provider of social housing with the Homes and Communities Agency under number 4850. Our registered office is at Peninsular House, Wharf Road, Portsmouth, Hampshire, PO2 8HB. All information correct at time of creation - February 2024.

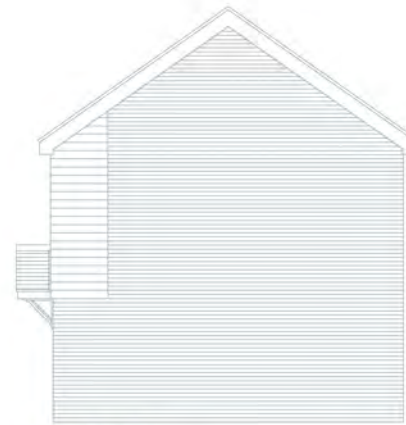


Oaklands Place

Plot 76
3 BEDROOM HOUSE



PLOT 76
SIDE ELEVATION



PLOT 76
SIDE ELEVATION



PLOT 76
FRONT ELEVATION

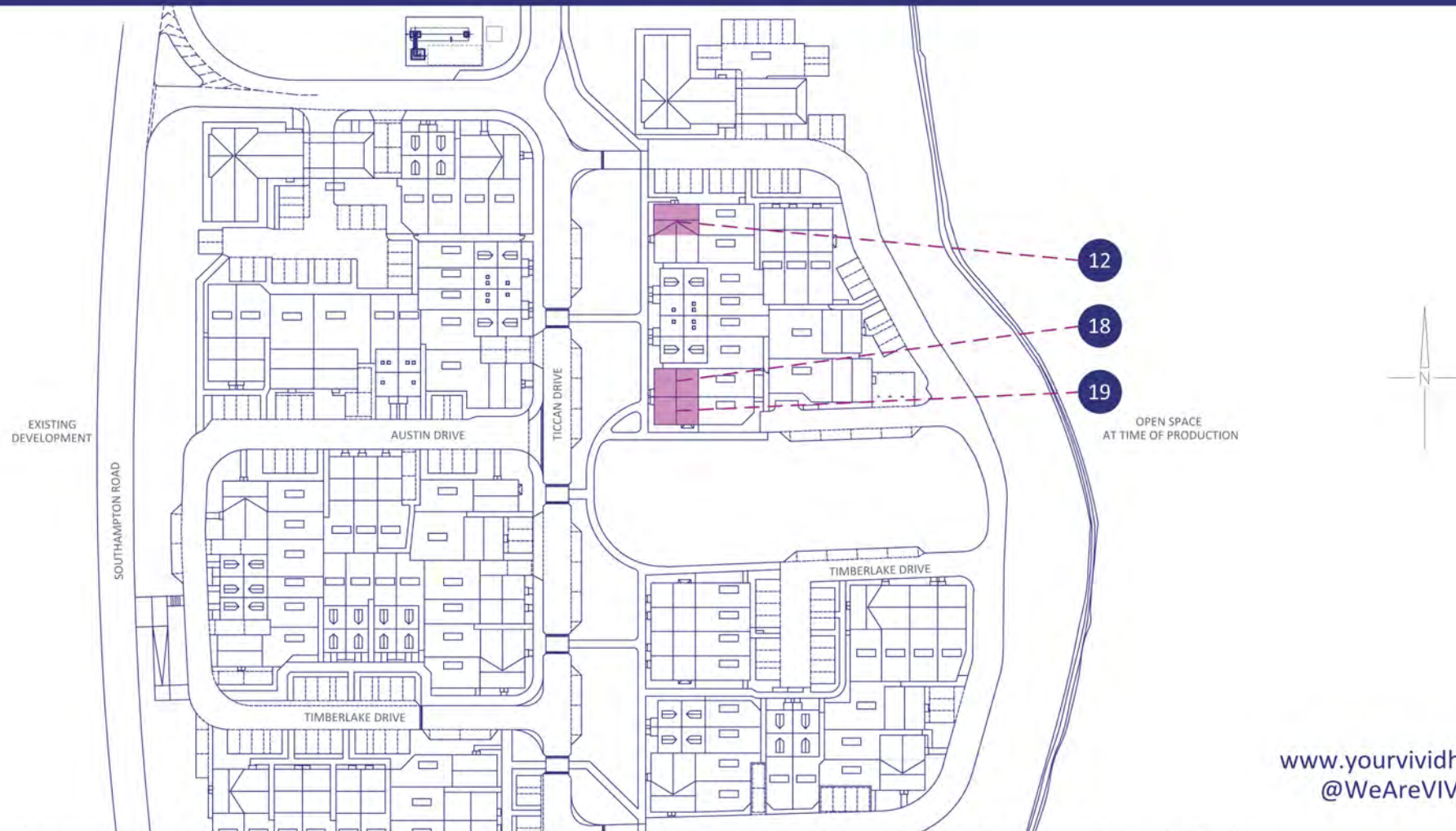


PLOT 76
REAR ELEVATION

Please note floorplans are not to scale and are indicative only, total areas are provided as gross internal areas and are subject to variance and these plans do not act as part of a legally binding contract, warranty or guarantee. These plans may not be to scale and dimensions may vary during the build programme. It is common for fixtures and fittings to change during the build programme, for example boilers. Location of windows, doors, kitchen units and appliances may differ. Doors may swing in to the opposite direction to that shown on selected houses. Dimensions, which are taken from the indicated points of measurement are for guidance only and are not intended to be used to calculate the space needed for specific pieces of furniture. If your home is set within a terrace row, the position of the windows may vary from those shown on this plan. The property may also be a handed (mirrored) version of the layout shown here. We advise that you do not order any furniture based on these indicative plans, please wait until you can measure up fully, inside the property. Please speak to a member of our sales team about when you can gain access to take measurements. We will not be responsible for costs incurred due to ordering incorrect furniture. VIVID Housing Limited is registered in England and Wales as a registered society under the Co-operative and Community Benefit Societies Act 2014 under number 7544 with exempt charity status and as a registered provider of social housing with the Homes and Communities Agency under number 4850. Our registered office is at Peninsular House, Wharf Road, Portsmouth, Hampshire, PO2 8HB. All information correct at time of creation - February 2024.

VIVID

Oaklands Place

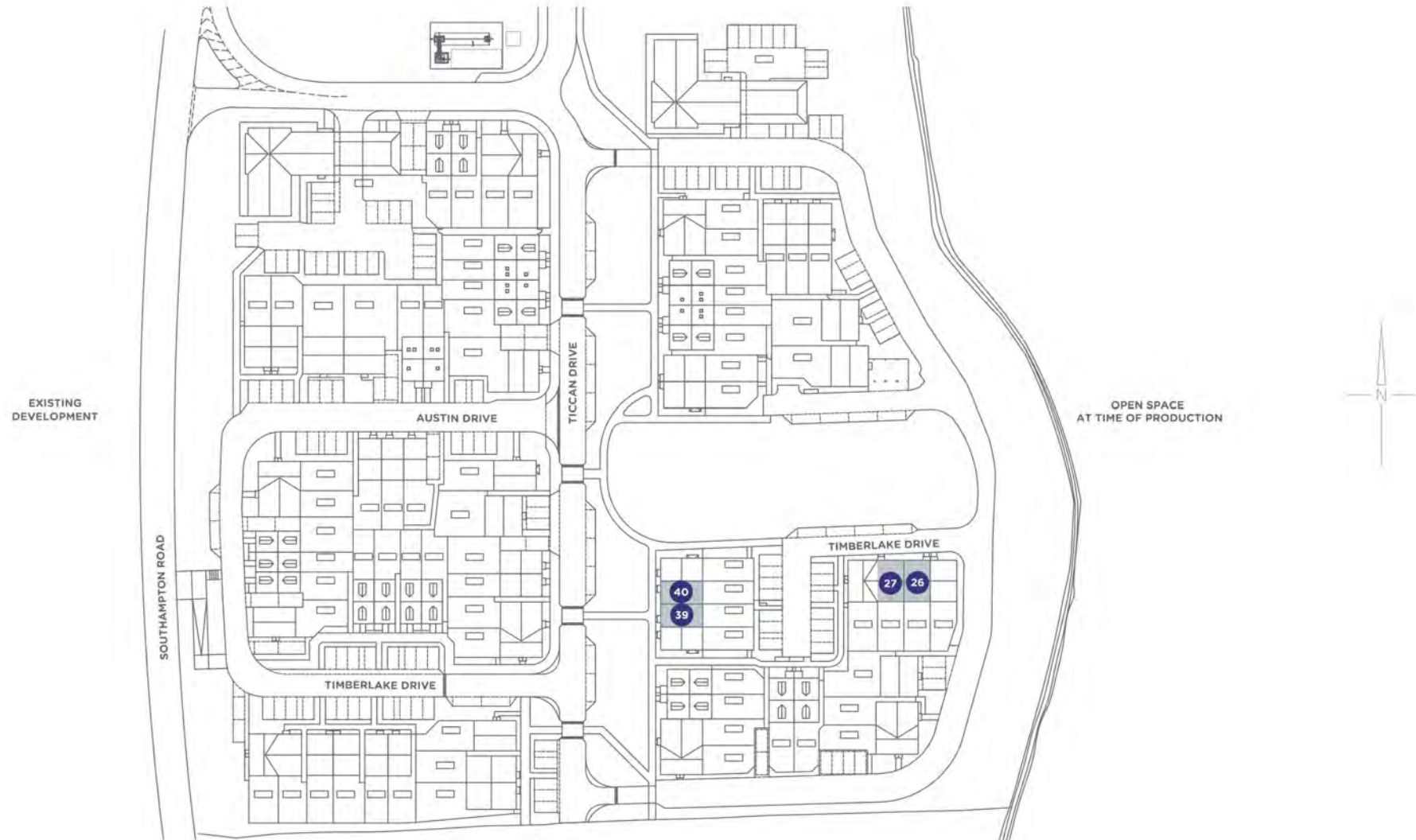


Please note floorplans are not to scale and are indicative only, total areas are provided as gross internal areas and are subject to variance and these plans do not act as part of a legally binding contract, warranty or guarantee. These plans may not be to scale and dimensions may vary during the build programme. It is common for fixtures and fittings to change during the build programme, for example boilers. Location of windows, doors, kitchen units and appliances may differ. Doors may swing in to the opposite direction to that shown on selected houses. Dimensions, which are taken from the indicated points of measurement are for guidance only and are not intended to be used to calculate the space needed for specific pieces of furniture. If your home is set within a terrace row, the position of the windows may vary from those shown on this plan. The property may also be a handed (mirrored) version of the layout shown here. We advise that you do not order any furniture based on these indicative plans, please wait until you can measure up fully, inside the property. Please speak to a member of our sales team about when you can gain access to take measurements. We will not be responsible for costs incurred due to ordering incorrect furniture. VIVID Housing Limited is registered in England and Wales as a registered society under the Co-operative and Community Benefit Societies Act 2014 under number 7544 with exempt charity status and as a registered provider of social housing with the Homes and Communities Agency under number 4850. Our registered office is at Peninsular House, Wharf Road, Portsmouth, Hampshire, PO2 8HB. All information correct at time of creation – October 2023.

www.yourvividhome.co.uk
@WeAreVIVIDsales

VIVID

Oaklands Place



Please note floorplans are not to scale and are indicative only, total areas are provided as gross internal areas and are subject to variance and these plans do not act as part of a legally binding contract, warranty or guarantee. These plans may not be to scale and dimensions may vary during the build programme. It is common for fixtures and fittings to change during the build programme, for example boilers Location of windows, doors, kitchen units and appliances may differ. Doors may swing in to the opposite direction to that shown on selected houses. Dimensions, which are taken from the indicated points of measurement are for guidance only and are not intended to be used to calculate the space needed for specific pieces of furniture. If your home is set within a terrace row, the position of the windows may vary from those shown on this plan. The property may also be a handid (mirrored) version of the layout shown here. We advise that you do not order any furniture based on these indicative plans, please wait until you can measure up fully, inside the property. Please speak to a member of our sales team about when you can gain access to take measurements. We will not be responsible for costs incurred due to ordering incorrect furniture. VIVID Housing Limited is registered in England and Wales as a registered society under the Co-operative and Community Benefit Societies Act 2014 under number 7544 with exempt charity status and as a registered provider of social housing with the Homes and Communities Agency under number 4850. Our registered office is at Peninsular House, Wharf Road, Portsmouth Hampshire, PO2 8HS. All information correct at time of creation - March 2024.

VIVID

Oaklands Place



www.yourvividhome.co.uk
@WeAreVIVIDsales

Please note floorplans are not to scale and are indicative only, total areas are provided as gross internal areas and are subject to variance and these plans do not act as part of a legally binding contract, warranty or guarantee. These plans may not be to scale and dimensions may vary during the build programme. It is common for fixtures and fittings to change during the build programme, for example boilers. Location of windows, doors, kitchen units and appliances may differ. Doors may swing in to the opposite direction to that shown on selected houses. Dimensions, which are taken from the indicated points of measurement are for guidance only and are not intended to be used to calculate the space needed for specific pieces of furniture. If your home is set within a terrace row, the position of the windows may vary from those shown on this plan. The property may also be a handed (mirrored) version of the layout shown here. We advise that you do not order any furniture based on these indicative plans, please wait until you can measure up fully, inside the property. Please speak to a member of our sales team about when you can gain access to take measurements. We will not be responsible for costs incurred due to ordering incorrect furniture. VIVID Housing Limited is registered in England and Wales as a registered society under the Co-operative and Community Benefit Societies Act 2014 under number 7544 with exempt charity status and as a registered provider of social housing with the Homes and Communities Agency under number 4850. Our registered office is at Peninsular House, Wharf Road, Portsmouth, Hampshire, PO2 8HB. All information correct at time of creation – May 2023.

VIVID

Oaklands Place



Please note floorplans are not to scale and are indicative only; total areas are provided as gross internal areas and are subject to variance and these plans do not act as part of a legally binding contract, warranty or guarantee. These plans may not be to scale and dimensions may vary during the build programme. It is common for fixtures and fittings to change during the build programme, for example boilers. Location of windows, doors, kitchen units and appliances may differ. Doors may swing in to the opposite direction to that shown on selected houses. Dimensions, which are taken from the indicated points of measurement are for guidance only and are not intended to be used to calculate the space needed for specific pieces of furniture. If your home is set within a terrace row, the position of the windows may vary from those shown on this plan. The property may also be a handed (mirrored) version of the layout shown here. We advise that you do not order any furniture based on these indicative plans, please wait until you can measure up fully, inside the property. Please speak to a member of our sales team about when you can gain access to take measurements. We will not be responsible for costs incurred due to ordering incorrect furniture. VIVID Housing Limited is registered in England and Wales as a registered society under the Co-operative and Community Benefit Societies Act 2014, under number 7544 with exempt charity status, and as a registered provider of social housing with the Homes and Communities Agency under number 4850. Our registered office is at Peninsular House, Wharf Road, Portsmouth, Hampshire, PO2 8HB. All information correct at time of creation - February 2024.

VIVID

Oaklands Place



Please note floorplans are not to scale and are indicative only, total areas are provided as gross internal areas and are subject to variance and these plans do not act as part of a legally binding contract, warranty or guarantee. These plans may not be to scale and dimensions may vary during the build programme. It is common for fixtures and fittings to change during the build programme, for example boilers. Location of windows, doors, kitchen units and appliances may differ. Doors may swing in to the opposite direction to that shown on selected houses. Dimensions, which are taken from the indicated points of measurement are for guidance only and are not intended to be used to calculate the space needed for specific pieces of furniture. If your home is set within a terrace row, the position of the windows may vary from those shown on this plan. The property may also be a handed (mirrored) version of the layout shown here. We advise that you do not order any furniture based on these indicative plans, please wait until you can measure up fully, inside the property. Please speak to a member of our sales team about when you can gain access to take measurements. We will not be responsible for costs incurred due to ordering incorrect furniture. VIVID Housing Limited is registered in England and Wales as a registered society under the Co-operative and Community Benefit Societies Act 2014, under number 7544 with exempt charity status and as a registered provider of social housing with the Homes and Communities Agency under number 4850. Our registered office is at Peninsular House, Wharf Road, Portsmouth, Hampshire, PO2 8HB. All information correct at time of creation - February 2024.

VIVID

SPECIFICATION

- Decorated in a neutral decor
 - Flooring included
 - Additional spec info is to be confirmed
-
- Plot 54, 70, 71 & 76 feature two parking spaces^ (demised)
 - All other plots parking comes on a first come, first serve basis.

Images shown are indicative and do not represent the final specification. VIVID reserves the right to change items in the specification dependent on availability, at any moment, and without prior notice during the build completion.

^These plots benefit from a single Active EV charging point. Please speak to your sales officer for more information.



VIVID

SERVICES & ADDITIONAL INFO

- **We are currently in the final stages of resolving some legal matters related to this development. While we are working hard to complete everything as planned, there may be unforeseen circumstances beyond our control that could delay handover.**

Any questions, please let your sales officer know before proceeding.

- Utilities - Mains Gas, Electric, Water (Metered) & Waste Water
- Broadband - BT Open Reach
- Broadband Coverage Checker - <https://checker.ofcom.org.uk/en-gb/broadband-coverage>
- Mobile Coverage Checker - <https://checker.ofcom.org.uk/en-gb/mobile-coverage>
- Construction method - Traditional
- Planning - View the local website for more information <https://www.fareham.gov.uk/>

Please Note: Newbuild property specification and additional info is not always available, also newbuild property addresses may not be active immediately with all service providers. Please contact the team if you have additional queries.



VIVID

WHO WE ARE

We're a customer-focused provider of affordable homes and the 4th largest builder amongst UK housing associations. We have an ambitious development programme, together with providing vital support services to our communities.

BUYING MORE SHARES

Shared Ownership enables you to buy more shares in your home over time, from an additional 10% to outright purchase (in most cases). We call this staircasing.

AFTER YOU MOVE IN

You can have confidence buying a VIVID home as our team are here to help you if you have any unforeseen issues or defects in your new home.

Example VIVID showhome from a previous development



VIVID

SO HOW CAN YOU ENJOY
ALL THIS FOR JUST £77,500?*

ONLY WITH VIVID SHARED OWNERSHIP

Shared ownership lets you buy a share of your new home. You can start at just 25% with a 5% deposit. You pay rent on the rest. If you buy a 25% share on one of these houses, you can expect the rent to be around £532.81 per month*. In the future, as your financial situation changes, you can buy greater shares if you want to. This is called staircasing. As your share goes up, your rent comes down. If you'd like to get a better understanding of how much buying a brand new home at Oaklands Place would cost you.

Visit www.yourvividhome.co.uk to see all of our homes on offer with Shared Ownership!

*Prices are based on buying a 25% share in a 2 bedroom house with a FMV of £310,000, shares start from £77,500 with a monthly rent of example of £532.81 (Based on unsold equity at 2.75% of value). Terms and conditions apply.



VIVID

PRICELIST AND MORE INFORMATION

Property type	Plot	Address	100% Value*	Eg: FROM minimum 25% share (which you must raise mortgage & deposit for)	Eg: Initial monthly rent pcm FROM (based on 75% share you don't own)	Estimated monthly Service Charge	Projected handover date*	Lease Length	Council Tax Band	Important Information
3 Bedroom Semi Detached House	12	2 Timberlake Drive, Fareham, Hampshire, PO14 4GL	£390,000	£97,500	£670.31	£19.62	Available Now	990 Years	TBC	Energy Info Key Info
3 Bedroom Semi Detached House	18	11 Ticcan Drive, Fareham, Hampshire, PO14 4GH	£365,000	£91,250	£627.34	£19.62	Available Now	990 Years	TBC	Energy Info Key Info
3 Bedroom Semi Detached House	19	15 Ticcan Drive, Fareham, Hampshire, PO14 4GH	£375,000	£93,750	£644.53	£19.62	Available Now	990 Years	TBC	Energy Info Key Info
3 Bedroom Mid Terraced House	27	18 Timberlake Drive, Fareham, Hampshire, PO14 4GL	£360,000	£90,000	£618.75	£19.62	January 2026	990 Years	TBC	Energy Info Key Info
2 Bedroom Mid Terraced House	39	21 Ticcan Drive, Fareham, Hampshire, PO14 4GH	£310,000	£77,500	£532.81	£18.95	January 2026	990 Years	TBC	Energy Info Key Info
2 Bedroom Semi Detached House	45	24 Austin Drive, Fareham, Hampshire, PO14 4GJ	£320,000	£80,000	£550.00	£18.95	January 2026	990 Years	TBC	Energy Info Key Info
3 Bedroom Semi Detached House	48	18 Austin Drive, Fareham, Hampshire, PO14 4GJ	£365,000	£91,250	£627.34	£19.62	January 2026	990 Years	TBC	Energy Info Key Info

VIVID

PRICELIST AND MORE INFORMATION

Property type	Plot	Address	100% Value*	Eg: FROM minimum 25% share (which you must raise mortgage & deposit for)	Eg: Initial monthly rent pcm FROM (based on 75% share you don't own)	Estimated monthly Service Charge	Projected handover date*	Lease Length	Council Tax Band	Important Information
3 Bedroom Semi Detached House	52	28 Ticcan Drive, Fareham, Hampshire, PO14 4GH	£365,000	£91,250	£627.34	£19.62	January 2026	990 Years	TBC	Energy Info Key Info
3 Bedroom Semi Detached House	58	27 Austin Drive, Fareham, Hampshire, PO14 4GJ	£390,000	£97,500	£670.31	£19.62	January 2026	990 Years	TBC	Energy Info Key Info
3 Bedroom Semi Detached House	65	11 Austin Drive, Fareham, Hampshire, PO14 4GJ	£365,000	£91,250	£627.34	£19.62	January 2026	990 Years	TBC	Energy Info Key Info
3 Bedroom Semi Detached House	66	9 Austin Drive, Fareham, Hampshire, PO14 4GJ	£365,000	£91,250	£627.34	£19.62	Available Now	990 Years	TBC	Energy Info Key Info
3 Bedroom Detached House	76	20 Ticcan Drive, Fareham, Hampshire PO14 4GH	£405,000	£101,250	£696.09	£19.62	Available Now	990 Years	TBC	Energy Info Key Info

VIVID

PRICELIST AND MORE INFORMATION

PLEASE NOTE THE FOLLOWING:

- Eligibility conditions apply.
- Initial Rent is calculated from 2.75%
- MOD Applicants will have priority followed by first come, first served.
- The 25% example above shows the minimum share available. Applicants will be means tested to confirm the share they purchase and are required to purchase the maximum affordable %.
- Successful applicants will have a maximum of 28 days ** to exchange contracts following VIVID's solicitor issuing the contract pack. You must then complete on the purchase within a maximum 5 days of either exchange of contracts or following handover from the developer.

*Prices & projected handover dates are for guidance only and are subject to change. Our newbuild Shared Ownership homes are valued by a RICS (Royal Institute Chartered Surveyor) surveyor which confirms the full market value for 3 months. Every 3 months we will have the homes revalued, to make sure they're in line with the current market. This means the price is non-negotiable. It also means the value of the homes could go up or down, so are subject to change.

If purchasing a property off-plan Handover dates are only projected and subject to change. Vivid will inform you of any changes to projected handover dates as and when received by the developer. Please note that we are not able to give you detailed information to the reasons for any extended delays due to confidentiality agreements within the contracts between vivid and the developer. By agreeing to reserve a property off-plan Vivid will not be responsible for any fees that you may incur due to delays in property completions.

** or if all legal paperwork and the mortgage offer is in you must complete the sale

We are currently in the final stages of resolving some legal matters related to this development. While we are working hard to complete everything as planned, there may be unforeseen circumstances beyond our control that could delay handover.

Any questions, please let your sales officer know before proceeding.



NOW IT'S TIME TO APPLY

yourvividhome.co.uk/developments/oaklands-place



VIVID Housing Limited is registered in England and Wales as a registered society under the Co-operative and Community Benefit Societies Act 2014 under number 7544 with exempt charity status and as a registered provider of social housing with the Regulator of Social Housing under number 4850.

Our registered office is at Peninsular House, Wharf Road, Portsmouth, Hampshire, PO2 8HB. All information correct at time of creation

Updated 20.01.26