

Floor Plans



LAMPTON PARKSIDE

WEST LONDON TW3

Croyde Court



CHOOSE LONDON

Floor Plans



LAMPTON PARKSIDE

WEST LONDON TW3

Introducing Shared Ownership new homes at Lampton Parkside, the newest neighbourhood in vibrant, leafy West London.

Choose from a selection of two-bedroom homes available with Shared Ownership, exclusively from NHG Homes.



CHOOSE LONDON



Communal Garden

Cheviot Court Private Podium Garden

Croyde Court

ISLEWORTH GREEN

ISLEWORTH GREEN

PREBEN WAY

CLARKE AVENUE

ISLEWORTH STREET

HESTON WAY

HESTON WAY

CIVIC STREET

CIVIC STREET

CLARKE AVENUE

Marketing Suite

Concierge

CIVIC STREET

CLARKE AVENUE

LAMPTON ROAD

LAMPTON PARK

LAMPTON 88 CAFE



CIVIC STREET BUS STOP



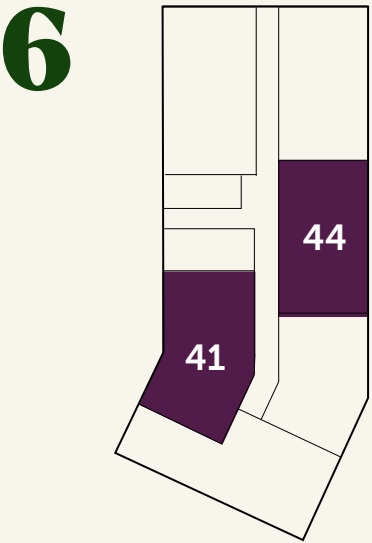
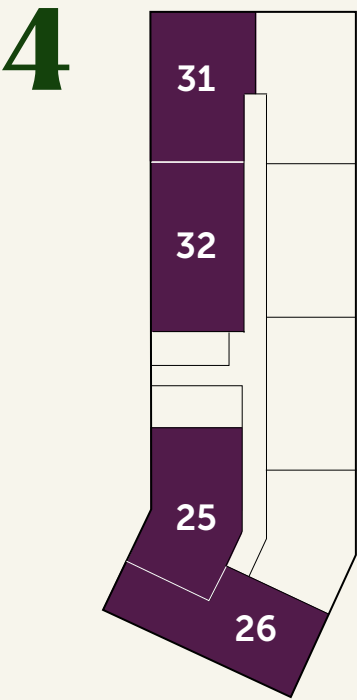
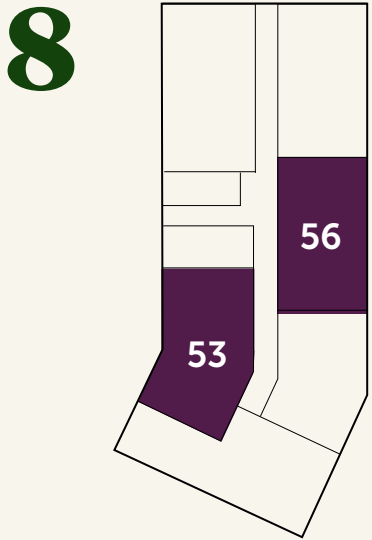
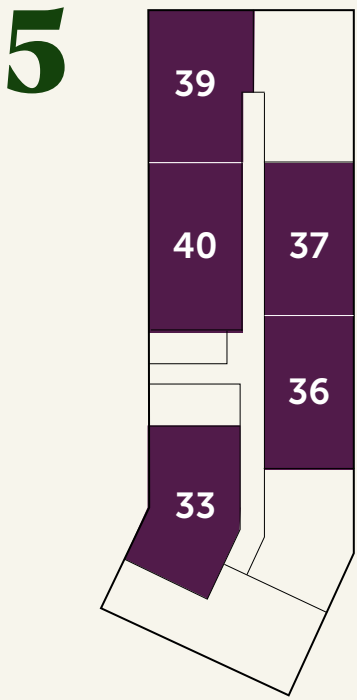
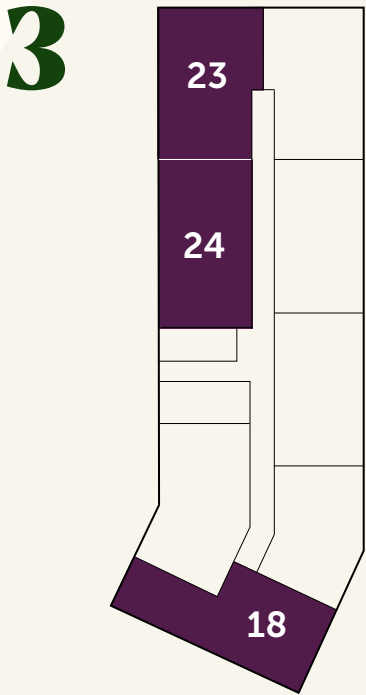
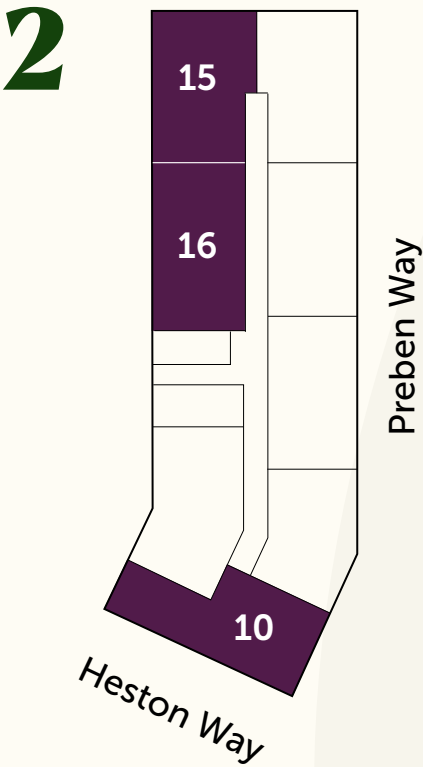
CIVIC CORNER



To
HOUSLOW
CENTRAL

Apartment Locators

2 Bedroom Apartments

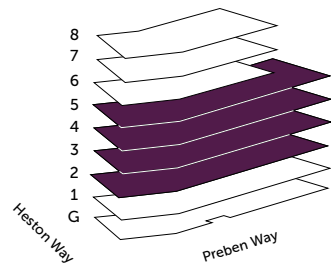


2 Bedroom Apartments

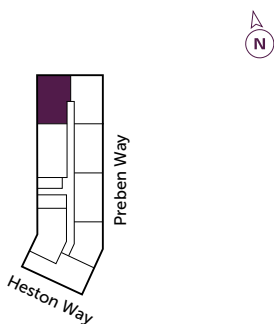
15, 23, 31, 39



Floor Locator



Plot Locator



Key

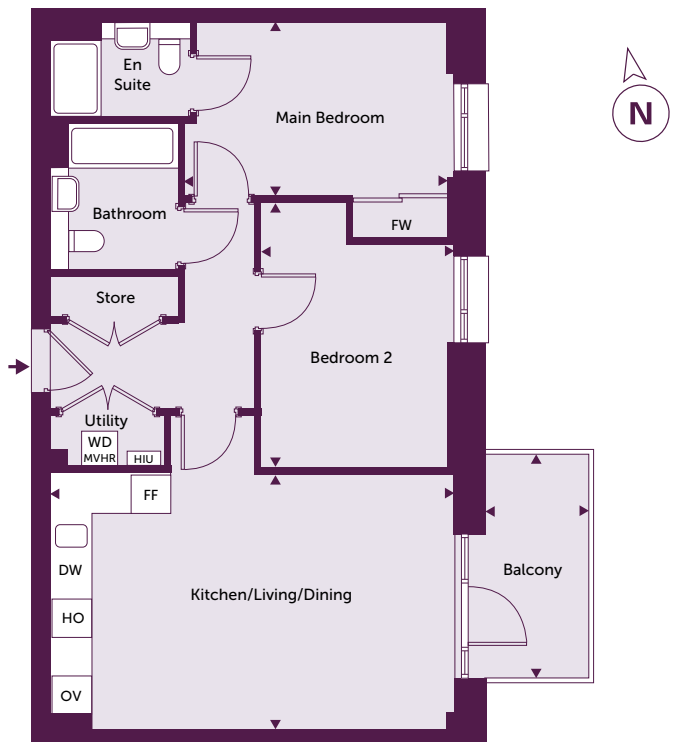
- OV-Oven
- HO-Hob
- WD-Washer Dryer
- DW-Dishwasher
- FF-Fridge Freezer
- FW-Fitted Wardrobe
- HIU-Heat Interface Unit
- MVHR-Mechanical Ventilation & Heat Recovery

Room	Dimensions - Metres	Dimensions - Feet
Kitchen/Living/Dining	7.12m x 3.61m	23' 4" x 11' 10"
Main Bedroom	4.06m x 3.70m	13' 4" x 12' 1"
Bedroom 2	3.87m x 2.97m	12' 8" x 9' 9"
Internal Area	70.2 sq m	755.63 sq ft
Balcony	1.62m x 3.51m	5' 4" x 11' 6"
External Area	5.7 sq m	61 sq ft
Floor	2, 3, 4, 5	

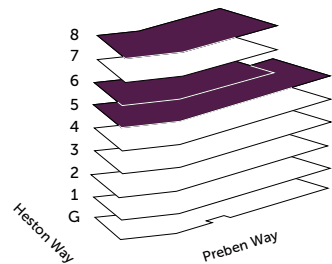
Floor plans depict a typical layout of this apartment type. Actual layouts, window positions and dimensions may be subject to variation. For exact plot specification, details of external and internal finishes, dimensions and floor plan differences, consult your Sales Executive. Any areas, measurements or distances quoted are approximate only and should not be used when ordering floor coverings or furnishings. Floor plans are not shown to scale.

2 Bedroom Apartments

37, 36, 44, 56



Floor Locator



Plot Locator



Key

- OV-Oven
- HO-Hob
- WD-Washer Dryer
- DW-Dishwasher
- FF-Fridge Freezer
- FW-Fitted Wardrobe
- HIU-Heat Interface Unit
- MVHR-Mechanical Ventilation & Heat Recovery

Room	Dimensions - Metres	Dimensions - Feet
Kitchen/Living/Dining	6.36m x 4.03m	20' 10" x 13' 3"
Main Bedroom	4.15m x 2.75m	13' 8" x 9' 0"
Bedroom 2	3.04m x 4.16m	10' 0" x 13' 8"
Internal Area	70.6 sq m	759.93 sq ft
Balcony	1.62m x 3.51m	5' 4" x 11' 6"
External Area	5.7 sq m	61 sq ft
Floor	5, 6, 8	

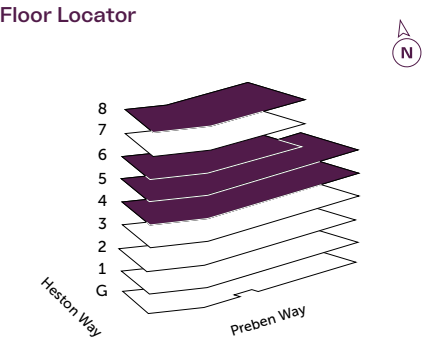
Floor plans depict a typical layout of this apartment type. Actual layouts, window positions and dimensions may be subject to variation. For exact plot specification, details of external and internal finishes, dimensions and floor plan differences, consult your Sales Executive. Any areas, measurements or distances quoted are approximate only and should not be used when ordering floor coverings or furnishings. Floor plans are not shown to scale.

2 Bedroom Apartments

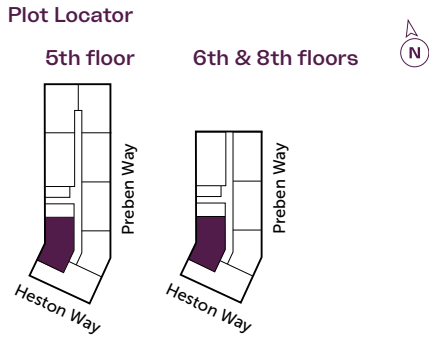
25, 33, 41, 53



Floor Locator



Plot Locator



Key

- OV-Oven
- HO-Hob
- WD-Washer Dryer
- DW-Dishwasher
- FF-Fridge Freezer
- FW-Fitted Wardrobe
- HIU-Heat Interface Unit
- MVHR-Mechanical Ventilation & Heat Recovery

Room	Dimensions - Metres	Dimensions - Feet
Kitchen/Living/Dining	6.26m x 4.00m	20' 6" x 13' 1"
Main Bedroom	4.67m x 2.98m	15' 4" x 9' 9"
Bedroom 2	3.02m x 3.78m	9' 11" x 12' 5"
Internal Area	71.9 sq m	773.93 sq ft
Balcony	1.62m x 3.51m	5' 4" x 11' 6"
External Area	5.7 sq m	61 sq ft
Floor	4, 5, 6, 8	

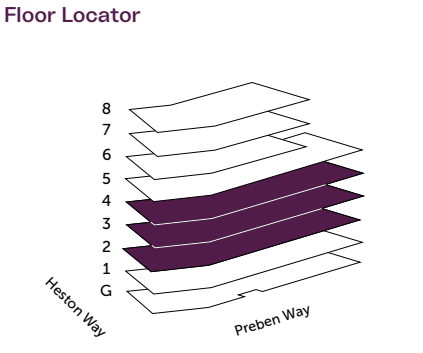
Floor plans depict a typical layout of this apartment type. Actual layouts, window positions and dimensions may be subject to variation. For exact plot specification, details of external and internal finishes, dimensions and floor plan differences, consult your Sales Executive. Any areas, measurements or distances quoted are approximate only and should not be used when ordering floor coverings or furnishings. Floor plans are not shown to scale.

2 Bedroom Apartments

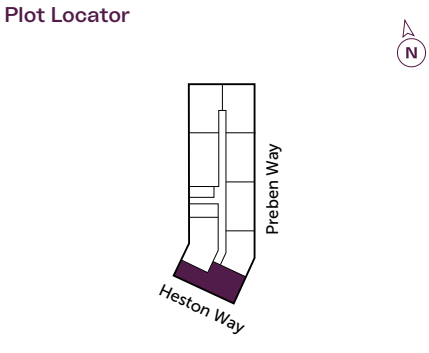
10, 18, 26



Floor Locator



Plot Locator



Key

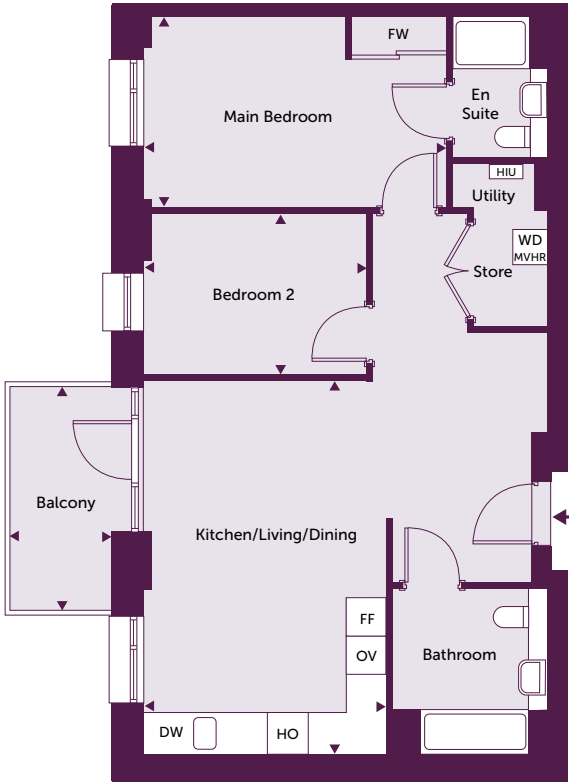
- OV-Oven
- HO-Hob
- WD-Washer Dryer
- DW-Dishwasher
- FF-Fridge Freezer
- FW-Fitted Wardrobe
- HIU-Heat Interface Unit
- MVHR-Mechanical Ventilation & Heat Recovery

Room	Dimensions - Metres	Dimensions - Feet
Kitchen/Living/Dining	7.61m x 3.35m	25' 0" x 11' 0"
Main Bedroom	5.22m x 2.65m	17' 2" x 8' 8"
Bedroom 2	3.37m x 3.44m	11' 1" x 11' 3"
Internal Area	72.5 sq m	780.38 sq ft
Balcony	1.62m x 3.51m	5' 4" x 11' 6"
External Area	5.7 sq m	61 sq ft
Floor	2, 3, 4	

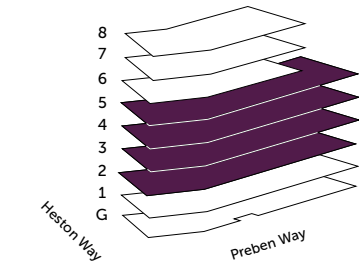
Floor plans depict a typical layout of this apartment type. Actual layouts, window positions and dimensions may be subject to variation. For exact plot specification, details of external and internal finishes, dimensions and floor plan differences, consult your Sales Executive. Any areas, measurements or distances quoted are approximate only and should not be used when ordering floor coverings or furnishings. Floor plans are not shown to scale.

2 Bedroom Apartments

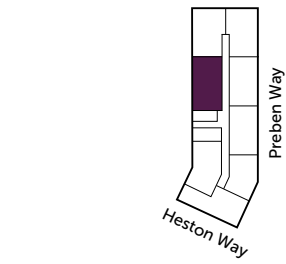
16, 24, 32, 40



Floor Locator



Plot Locator



Key

- OV-Oven
- HO-Hob
- WD-Washer Dryer
- DW-Dishwasher
- FF-Fridge Freezer
- FW-Fitted Wardrobe
- HIU-Heat Interface Unit
- MVHR-Mechanical Ventilation & Heat Recovery

Room	Dimensions - Metres	Dimensions - Feet
Kitchen/Living/Dining	3.81m x 5.87m	12' 6" x 19' 3"
Main Bedroom	4.76m x 3.00m	15' 7" x 9' 10"
Bedroom 2	3.49m x 2.52m	11' 5" x 8' 3"
Internal Area	73 sq m	785.77 sq ft
Balcony	1.62m x 3.51m	5' 4" x 11' 6"
External Area	5.7 sq m	61 sq ft
Floor	2, 3, 4, 5	

Floor plans depict a typical layout of this apartment type. Actual layouts, window positions and dimensions may be subject to variation. For exact plot specification, details of external and internal finishes, dimensions and floor plan differences, consult your Sales Executive. Any areas, measurements or distances quoted are approximate only and should not be used when ordering floor coverings or furnishings. Floor plans are not shown to scale.



OGI is indicative only



Show Apartment photography



THE DETAILS

Specification

KITCHEN

- Matt finish handleless units with soft close to doors and drawers
- Caesarstone worktop with matching upstands and splashback behind hob
- Bosch induction hob
- Bosch integrated single oven
- Bosch integrated microwave
- Bosch integrated dishwasher
- Zanussi Integrated fridge/freezer
- Bosch canopy hood/extractor
- Stainless steel undermounted sink with contemporary brushed steel mixer tap
- LED feature lighting to wall units
- LED Downlights

LIVING & DINING

- Amtico flooring to entrance hall, kitchen/dining/living room, bathroom, en-suite
- TV, BT and data points to selected locations
- Wiring for customer's own broadband connection
- Pre-wired for customer's own Sky Q connection

BEDROOM

- Carpet to bedrooms
- Built in mirrored wardrobe with sliding doors to main bedroom
- Pendant light fitting

BATHROOM & EN-SUITE

- Bath with shower over and glass screen
- Bath panel to match vanity top
- Feature mirror with shelf (where layout allows)
- Heated chrome towel rail
- Low profile shower tray with glass shower door to en-suite
- Shaver sockets to bathroom and en-suite
- LED Downlights

GENERAL

- Bosch Washer/dryer (freestanding in hallway cupboard)
- Painted solid core or composite entrance door with multi-point locking system
- Walls and ceilings painted in white emulsion
- Right to Park car parking spaces available for purchase – please speak to a sales executive
- Electric car charging points available to selected parking spaces
- Lift access to all floors where accessed off main communal core

- Cycle and bin storage space
- Letterboxes provided within communal entrance lobby
- External lighting to balcony

PEACE OF MIND

- Underfloor heating throughout each apartment
- Heating via communal heating plant
- Video entry system to every apartment accessed from communal core, linked to main entrance door
- Fob controlled access system to entrance lobby where apartments accessed off communal core

- Hard-wired smoke and heat detectors
- Sprinkler system to all apartments
- Spur for customer's own installation of security alarm panel
- 10 year NHBC warranty
- 999 year lease
- A service charge will be payable for the maintenance of the shared facilities and communal area





CHOOSE LONDON