

## Stoke Rise **The Windsor**

2 bedroom mid/end terraced




Computer generated image for illustration purposes only. Finishes and materials used may be subject to change.



# Stoke Rise

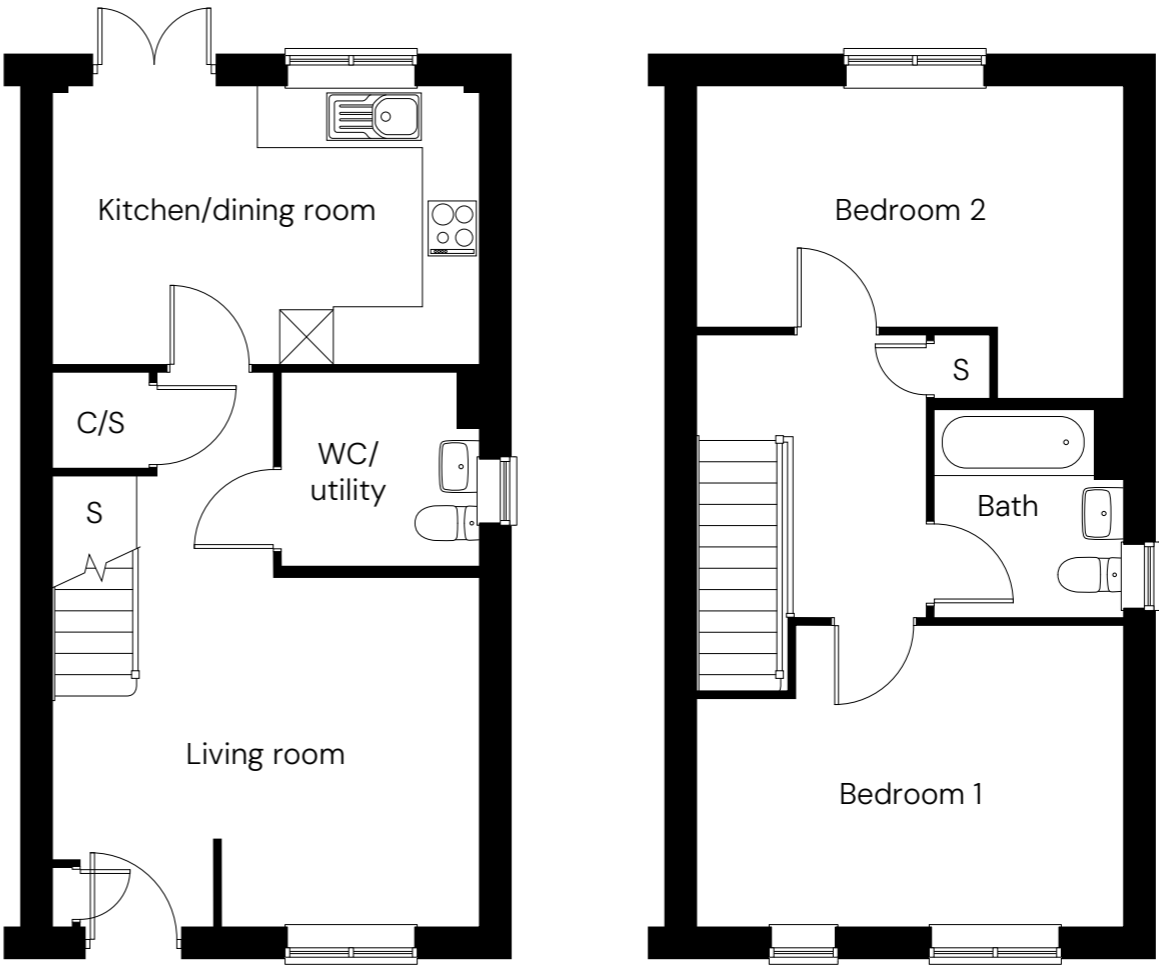
## The Windsor

2 bedroom end terraced  
Plot 25\*, 28

2  1  1 

Room

Kitchen/dining room	4.6m x 3.0m
Living room	4.6m x 5.9m
Bedroom 1	4.6m x 3.2m
Bedroom 2	4.6m x 3.3m
Total area	82m <sup>2</sup>






\* Mirrored plot    C/S Cylinder/storage    S Storage

Floor plan for illustration purposes only and not to scale. Dimensions are maximum and for general guidance, not suitable for furniture, appliances, or carpet sizing.

# Stoke Rise

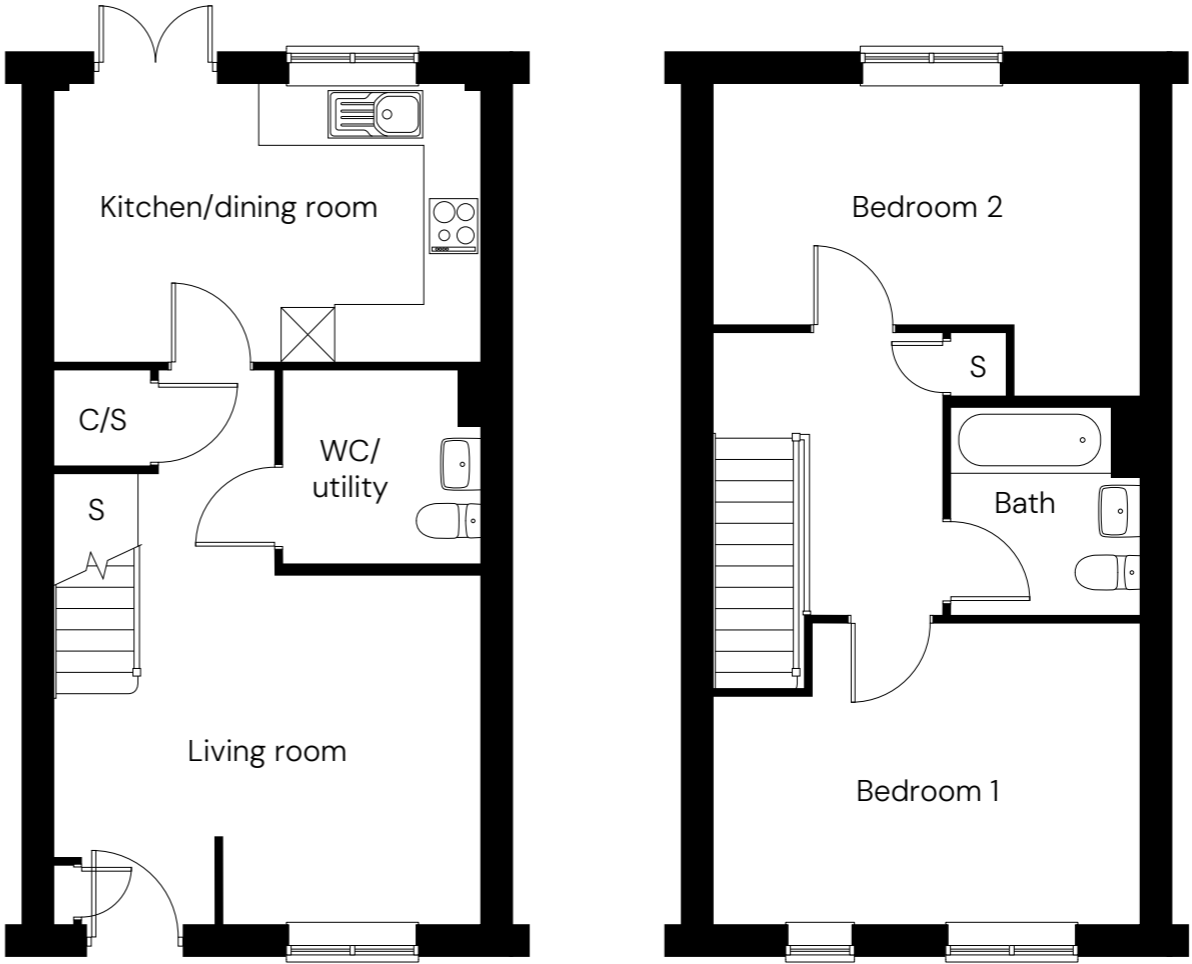
## The Windsor

2 bedroom mid terraced  
Plot 26, 27\*

2  1  1 

Room

Kitchen/dining room	4.6m x 3.0m
Living room	4.6m x 5.9m
Bedroom 1	4.6m x 3.2m
Bedroom 2	4.6m x 3.3m
<b>Total area</b>	<b>82m<sup>2</sup></b>



\* Mirrored plot    C/S Cylinder/storage    S Storage





Floor plan for illustration purposes only and not to scale. Dimensions are maximum and for general guidance, not suitable for furniture, appliances, or carpet sizing.

# Stoke Rise

## Site plan

North



-  **The Windsor**  
2 bedroom mid/end terraced
-  **Parking spaces**
-  **Visitor parking**
-  **EV charging point**

Site layout and landscaping is indicative only and subject to change.

