

Prices
from
£198,000

Salden Park, Milton Keynes

Garner Street, Bletchley, Milton Keynes, MK3 4AA

A brand new development of 2 & 3 bedroom homes

////// **ParadigmLiving**



£ Prices from **£198,000 (45% share)**

% Share available **45%-75%**

🛏 **3 Bedrooms**



Located in the ever-popular Milton Keynes, Salden Park will be an exciting new community designed for families to thrive.

Milton Keynes, recently awarded city status, is a vibrant hub that appeals to professionals and families alike. With direct train services to London in just 45 minutes, it offers excellent connectivity for commuters. Its position along the M1 corridor also makes travelling further afield simple and convenient.

Adding to its charm, Salden Park borders the picturesque village of Newton Longville — perfect for a leisurely walk and a visit to the delightful thatched pub.



KEY FEATURES

White Bathroom suite and thermostatic shower with chrome fittings

Carpet throughout bedrooms. Amtico flooring in kitchen, Living Room, bathrooms & downstairs toilet

Air Source Heat Pump

Allocated parking

Fitted kitchen with integrated oven and hob

Integrated Candy washing/dryer

Integrated Fridge/Freezer

Integrated Cooker Hood

Single Fan Built-Under Oven - Candy

Electric Ceramic Hob – Candy

Private Gardens with shed

EV Charge Points

These particulars do not constitute any part of an offer or contract. Any intended purchasers must satisfy themselves as to the correctness of each of the statements contained in these particulars. All floor layouts maybe subject to changes. The dimensions given on the plan are subject to minor variations intended for guidance only and are not be used for carpets, appliances or items of furniture.

SPECIFICATION

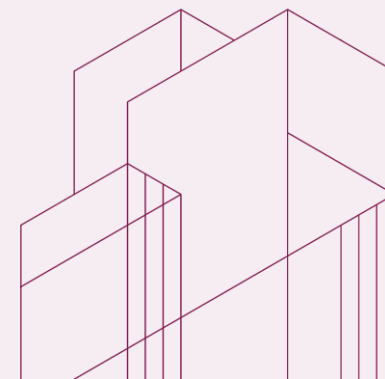
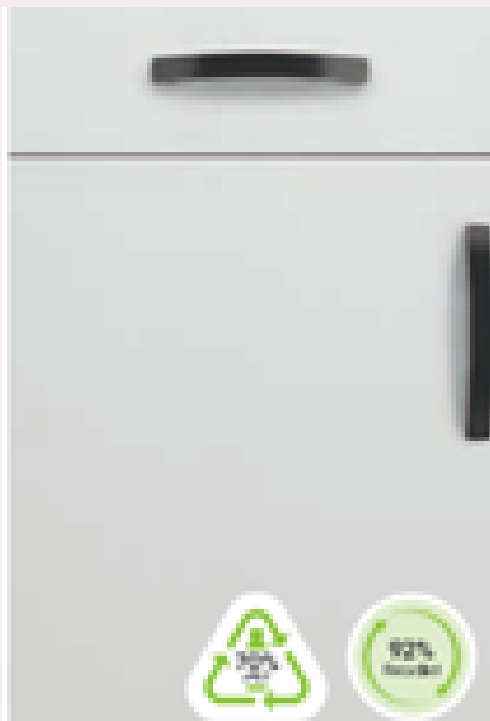
KITCHEN

MANUFACTURER
Symphony

COLOUR
Urban White

HANDLES
Brushed Nickel Bow handle

WORK TOP
Carbon Steel



The specifications and information provided herein are for general informational purposes only and are subject to change without notice. Actual product colours may vary slightly due to differences in screen settings, lighting conditions, and the nature of physical materials. We strive for accuracy but cannot guarantee that digital imagery precisely reflects the final product.

SPECIFICATION

FLOORING & BATHROOM

VINYL BRAND
Amtico

COLOUR
Sun Bleached Oak

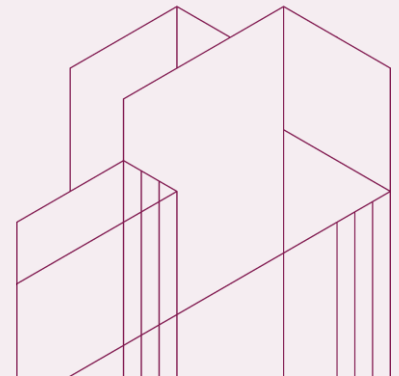
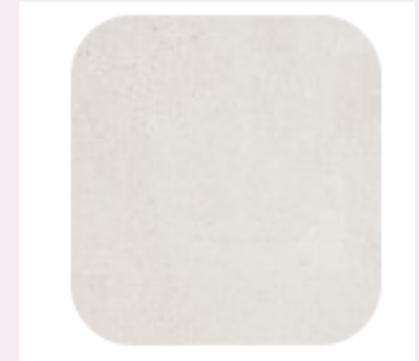
CARPET BRAND
Hampstead

COLOUR
Spirit Glow

BATHROOM TILE
Porcelonsa

COLOUR
Bottega White

The specifications and information provided herein are for general informational purposes only and are subject to change without notice. Actual product colours may vary slightly due to differences in screen settings, lighting conditions, and the nature of physical materials. We strive for accuracy but cannot guarantee that digital imagery precisely reflects the final product.





PROPERTY TYPE

Plots 16, 17*,18 ,19*

(* handed)

KITCHEN

10'8" x 10'2" 3.27m x 3.10m

LIVING ROOM

14'4" x 10'11" 4.37m x 3.34m

BEDROOM 1

14'5" x 10'5" 4.41m x 3.19m

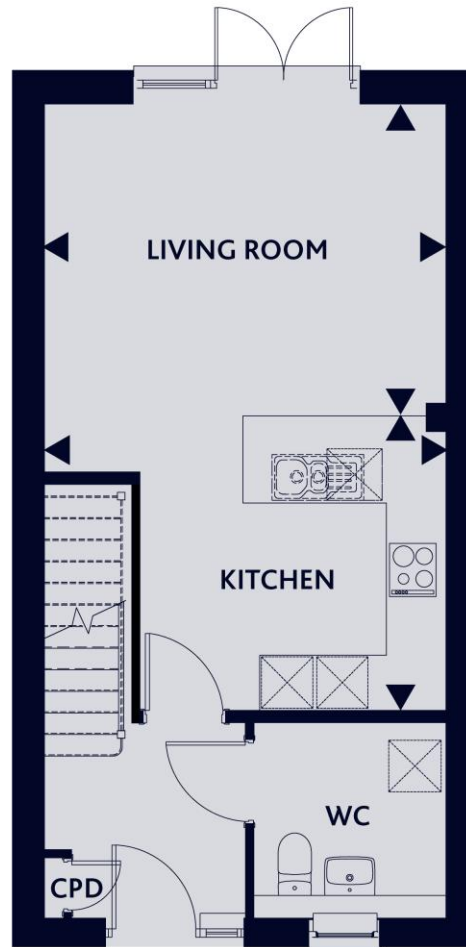
BEDROOM 2

11'1" x 14'9" 3.40m x 4.52m

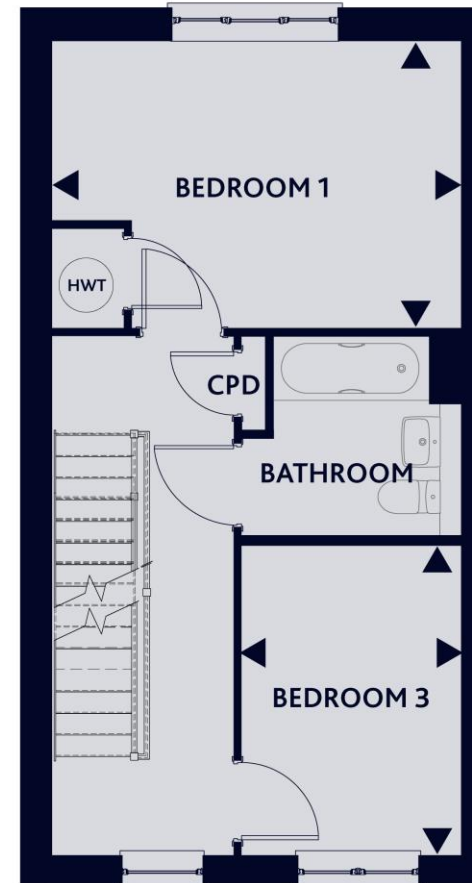
BEDROOM 3

7'11" x 11'1" 2.43m x 3.38m

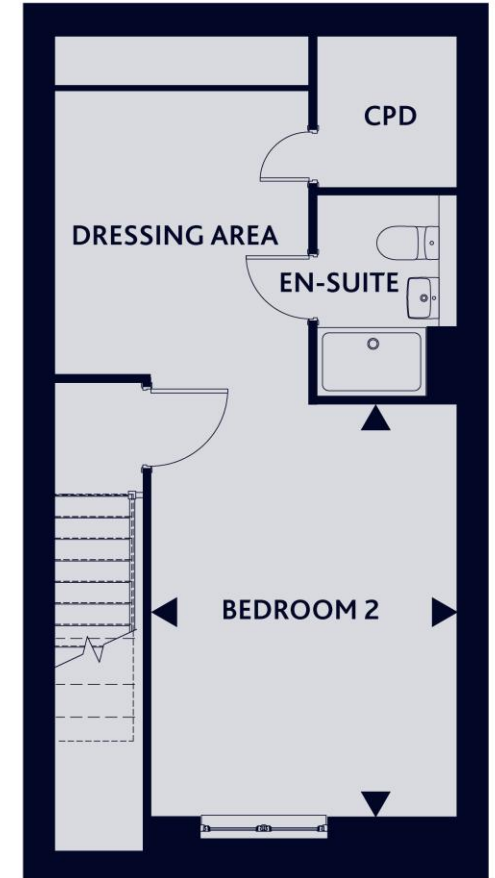
These particulars do not constitute any part of an offer or contract. Any intended purchasers must satisfy themselves as to the correctness of each of the statements contained in these particulars. All floor layouts maybe subject to changes. The dimensions given on the plan are subject to minor variations intended for guidance only and are not be used for carpets, appliances or items of furniture.



GROUND FLOOR



FIRST FLOOR



SECOND FLOOR



SITE PLAN



 Affordable rent properties

These particulars do not constitute any part of an offer or contract. Any intended purchasers must satisfy themselves as to the correctness of each of the statements contained in these particulars. All floor layouts may be subject to changes. The dimensions given on the plan are subject to minor variations intended for guidance only and are not to be used for carpets, appliances or items of furniture.



For more information

0300 303 8046

www.paradigmliving.co.uk

These particulars do not constitute any part of an offer or contract. Any intended purchasers must satisfy themselves as to the correctness of each of the statements contained in these particulars. All floor layouts maybe subject to changes. The dimensions given on the plan are subject to minor variations intended for guidance only and are not be used for carpets, appliances or items of furniture.

