

Welcome to Habberley Park

Kidderminster, Worcestershire, DY11 5RJ

A collection of 2 and 3 bedroom
Shared Ownership homes.



bromfordhomes.co.uk/habberleypark

On your doorstep

Built by 5* builders Bovis Homes, our brand new two and three-bedroom Shared Ownership homes at Habberley Park are sure to be very popular. Located in the market town of Kidderminster in Worcestershire, this latest development is perfect for both work and play. It has something for everyone, appealing to first-time buyers, couples, and growing families alike.



**Tesco
Superstore**
2.4 miles



**Kidderminster
Town Centre**
1.8 miles



**Kidderminster
Railway Station**
2.9 miles

Local area connection

To meet the needs of local people most of our homes for sale require a local connection to the area. The connection criteria varies between sites, but generally it's based on:

- Being a resident (or employed) within the area for a number of years (usually between 2 to 5)
- Family connections – for example, parent, grandparent, child, grandchild or adult sibling – who have lived in the area for at least three years

**There is no local area connection requirement
for Habberley Park**

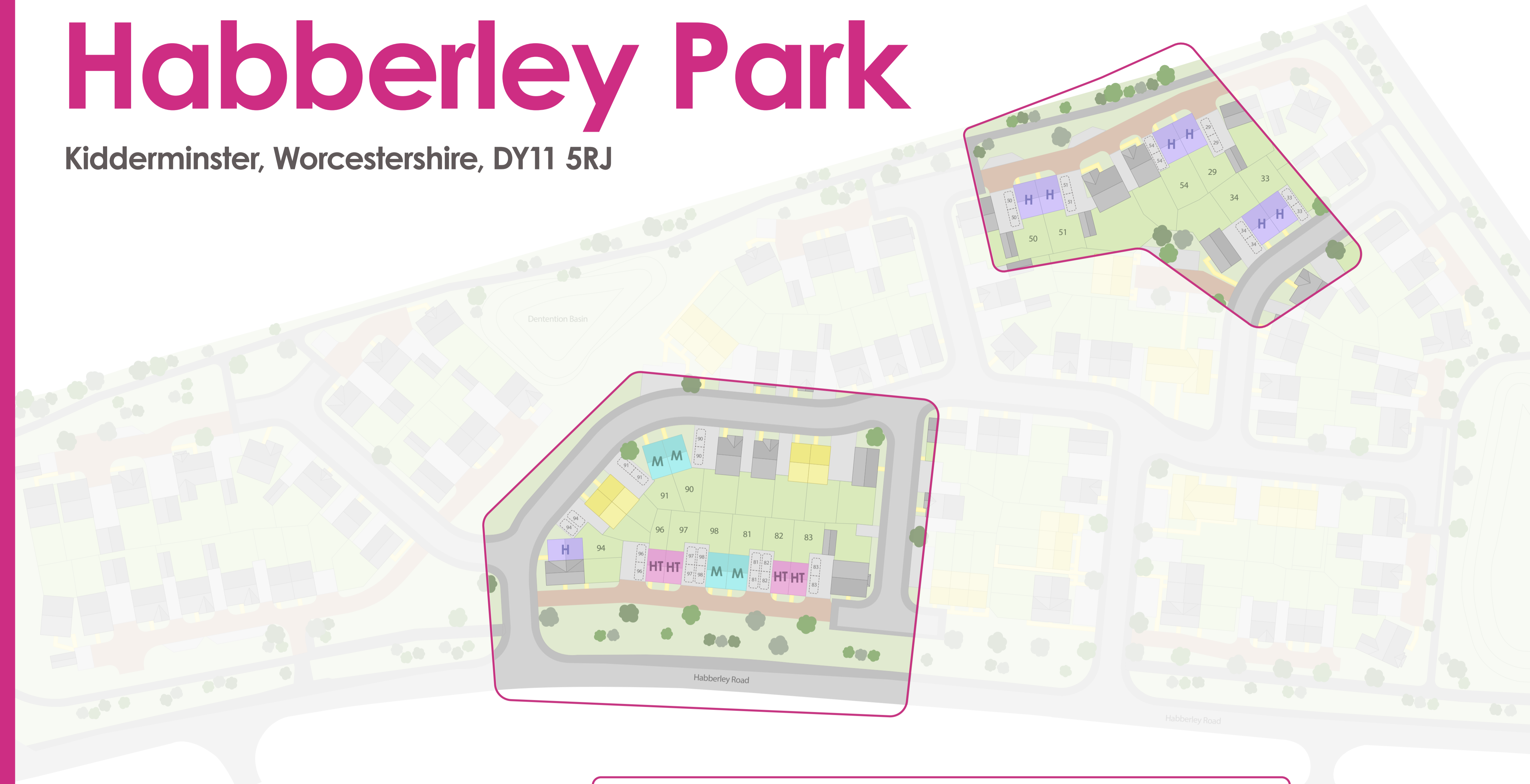
If you need any more information, please speak to one of our helpful Sales Consultants.






We follow Homes England Guidelines on First Come, First Served policies for Shared Ownership homes. Please visit [our policies page](#) for full policy details

Bromford
Shared Ownership

Habberley Park

Kidderminster, Worcestershire, DY11 5RJ



 HT The Hawthorn 2 bed home	 H The Hazel 3 bed home	 Community Housing Group (affordable homes)
 M The Magnolia 3 bed home	 Bovis Homes	

Plots: 82, 83, 96 & 97

The Hawthorn

2 bedroom home



Ground floor

Living / Dining

4.49m x 4.11m / 13'6" x 14'9"

Kitchen

3.27m x 2.90m / 10'9" x 9'6"

WC

1.53m x 1.15m / 5'0" x 3'9"

First floor

Bedroom 1

4.11m x 2.72m / 13'6" x 8'11"

Bedroom 2

4.11m x 2.85m / 13'6" x 9'4"

Bathroom

2.15m x 1.94m / 7'1" x 6'4"



2 bedrooms



Energy efficient



Turf to rear garden



10 Year NHBC warranty

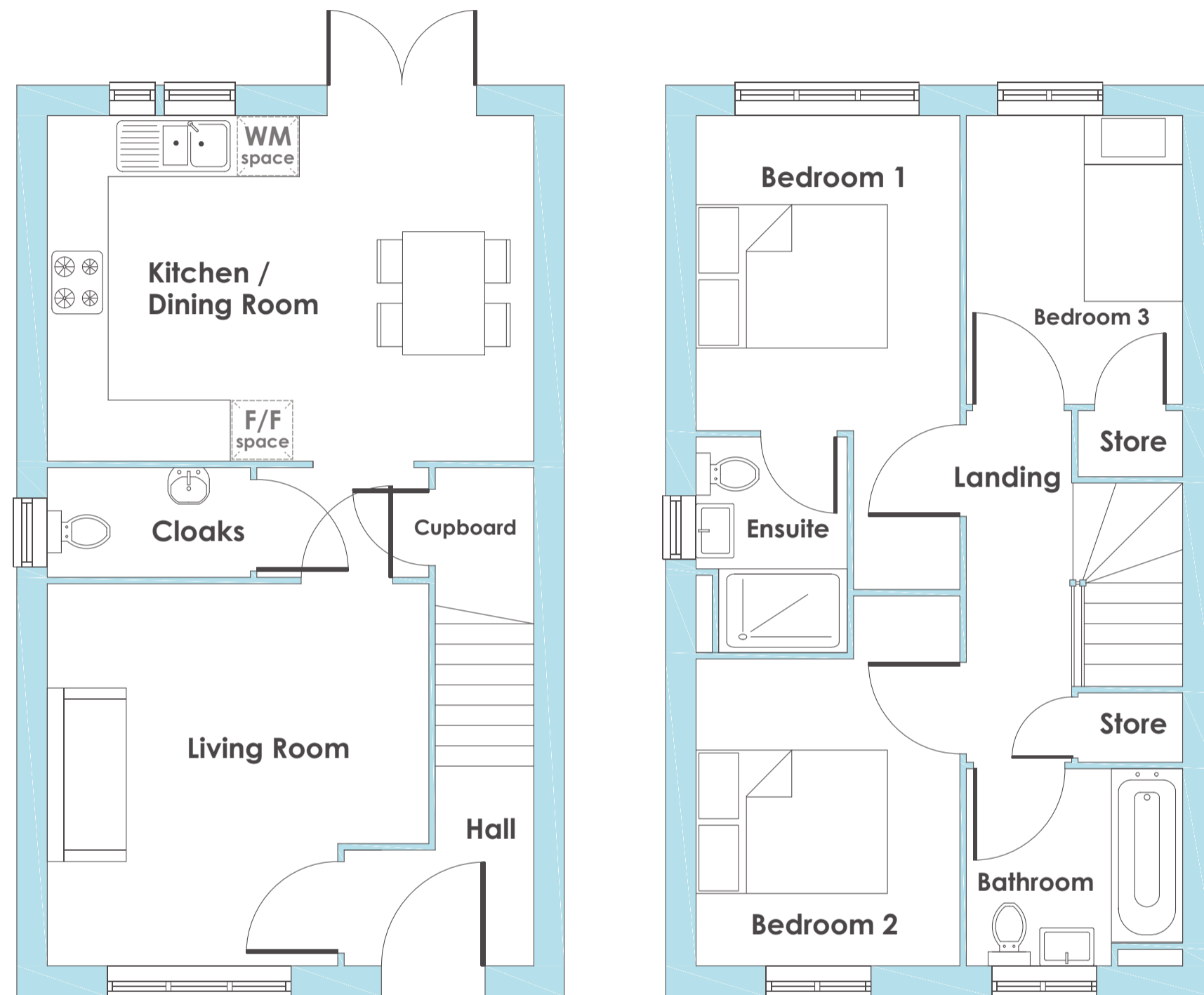


- Two-bedroom energy-efficient home
- Versatile open plan kitchen, dining area and lounge
- French doors to rear garden
- Guest cloakroom
- Handy storage cupboards
- Two double bedrooms
- Turfed rear garden
- Two dedicated parking spaces

Plots: 81, 90, 91 & 98

The Magnolia

3 bedroom home



Ground floor

Kitchen / Dining

4.79m x 3.40m / 15'9" x 11'2"

Living Room

3.76m x 3.76m / 12'4" x 12'4"

WC

2.0m x 1.08m / 6'7" x 3'7"

First floor

Bedroom 1

3.10m x 2.59m / 10'2" x 8'6"

Bedroom 2

3.03m x 2.59m / 9'11" x 8'6"

Bedroom 3

2.84m x 2.13m / 9'4" x 7'0"



3 bedrooms



Energy efficient



Turf to rear garden



10 Year NHBC warranty



- Three-bedroom energy-efficient home
- Open plan kitchen with dining area
- French doors to rear garden
- Guest cloakroom
- Plenty of storage space
- Main bedroom with ensuite
- Turfed rear garden
- Two dedicated parking spaces

Plots: 29, 33, 34, 54, 94, 114 & 115

The Hazel

3 bedroom home



3 bedrooms



Energy efficient



Turf to rear garden



10 Year NHBC warranty



Ground floor

Kitchen / Dining

5.24m x 3.02m / 17'2" x 9'11"

Living room

4.20m x 3.71m / 13'10" x 12'2"

Hall

2.91m x 1.81m / 9'7" x 5'11"

WC

1.84m x 1.49m / 6'0" x 4'11"

First floor

Bedroom 1

3.57m x 3.32m / 11'9" x 10'11"

Bedroom 2

2.98m x 2.76m / 9'9" x 9'1"

Bedroom 3

3.51m x 2.19m / 11'6" x 7'2"

Bathroom

2.17m x 1.94m / 7'1" x 6'4"

Ensuite

2.06m x 1.59m / 6'9" x 5'3"



- Three-bedroom energy-efficient home
- Open plan kitchen with dining area
- French doors to rear garden
- Guest cloakroom
- Handy storage cupboard
- Main bedroom with ensuite
- Turfed rear garden
- Two dedicated parking spaces

Bromford Shared Ownership Specification



Kitchen

Worktop upstands

Oven, hob & extractor

Space for fridge/freezer

Boiler housing unit

Stainless steel splash back

Flooring provided



Bathroom

Thermostatic shower mixer over bath

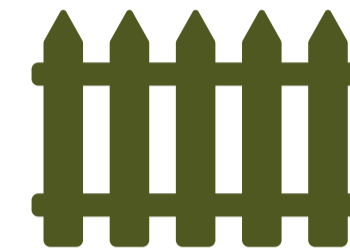
Glass shower screen

Chrome towel radiator

Electric shaver point

Tiling around bath

Flooring provided



External

Door number

Allocated Parking*

Outside tap to rear*

PIR lighting to front and rear

Turfed rear garden*

Door bell

Rear gate with slide bolt and latch*

Paved patio area*

Fencing to rear garden*

*where relevant



General

Smoke detectors

Carbon monoxide detector

Data point for internet

TV points

Slatted shelf to airing cupboard

Window restrictor to top floor windows

LED lightbulbs

We operate a policy of continual product development and all specifications outlined on this website are indicative only. Bromford reserves the right to implement changes without warning.



Who are we?

Since 1963 we have been providing customers with new and affordable homes. We want all of our customers to thrive and believe that with the right homes and someone who believes in their potential, almost anything is possible - with Bromford Shared Ownership we're helping more people than ever before to realise their dreams of owning their home.

Where does my money go when I buy a Bromford home? As a registered charity through the FCA registered societies, all the money Bromford makes goes back into the communities we work in and helps the people we work with thrive for a better safer life.



Shannon Way,
Ashchurch,
Tewkesbury,
GL20 8ND

0800 0852 499
sales@bromford.co.uk
bromfordhomes.co.uk



Follow us on TikTok

Visit the Home Ownership Hub to find out more about your new home
bromfordhomes.co.uk/home-ownership-hub



Bromford abides by the Consumer Protection from Unfair Trading Regulations 2008

Bromford.
Shared Ownership