

Welcome to Curborough Lakes

Watery Lane, Lichfield WS13 8ES

A collection of 1 and 2 bedroom Shared Ownership homes and apartments.



bromfordhomes.co.uk/curboroughlakes

On your doorstep

Set in the peaceful outskirts of Lichfield, Curborough Lakes offers a choice of brand new 1 and 2 bedroom homes and apartments built by Redrow homes with spaces designed for comfort and easy living. Whether you're stepping onto the property ladder or moving into a home that better fits your lifestyle, Shared Ownership makes settling into Curborough Lakes surprisingly within reach.



**Beacon Park
Lichfield**
2.6 miles



**Lichfield Train
Station**
2.2 miles



**Lichfield
Cathedral**
2.3 miles

Local area connection

To meet the needs of local people most of our homes for sale require a local connection to the area. The connection criteria varies between sites, but generally it's based on:

- Being a resident (or employed) within the area for a number of years (usually between 2 to 5)
- Family connections – for example, parent, grandparent, child, grandchild or adult sibling – who have lived in the area for at least three years

Priority will be given to applicants who have a connection to Lichfield District Council.

If you need any more information, please speak to one of our helpful Sales Consultants.

We follow Homes England Guidelines on First Come, First Served policies for Shared Ownership homes. Please visit [our policies page](#) for full policy details

Bromford.
Shared Ownership

Curborough Lakes

Watery Lane, Lichfield WS13 8ES

S

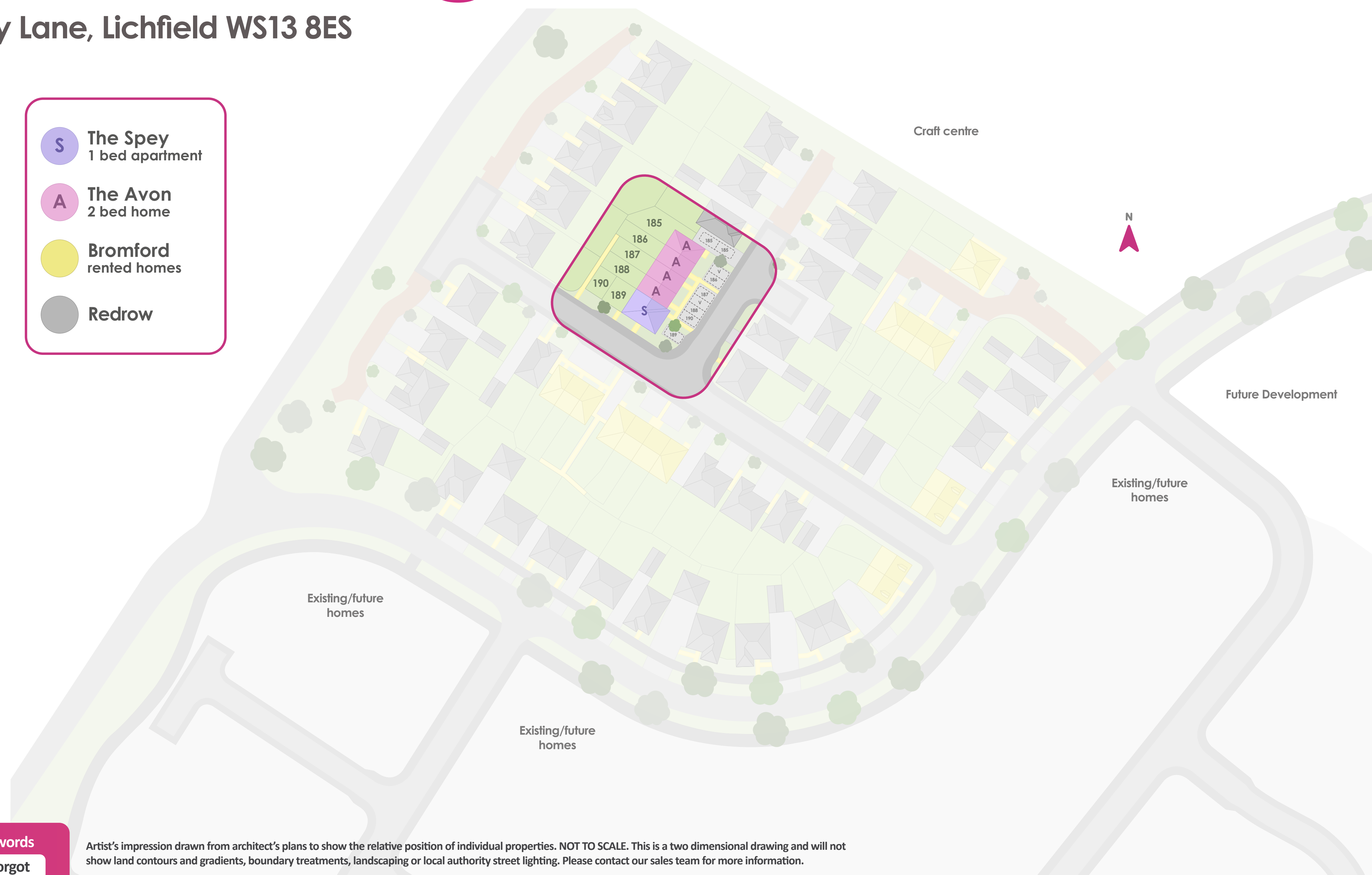
The Spey
1 bed apartment

A

The Avon
2 bed home

Bromford
rented homes

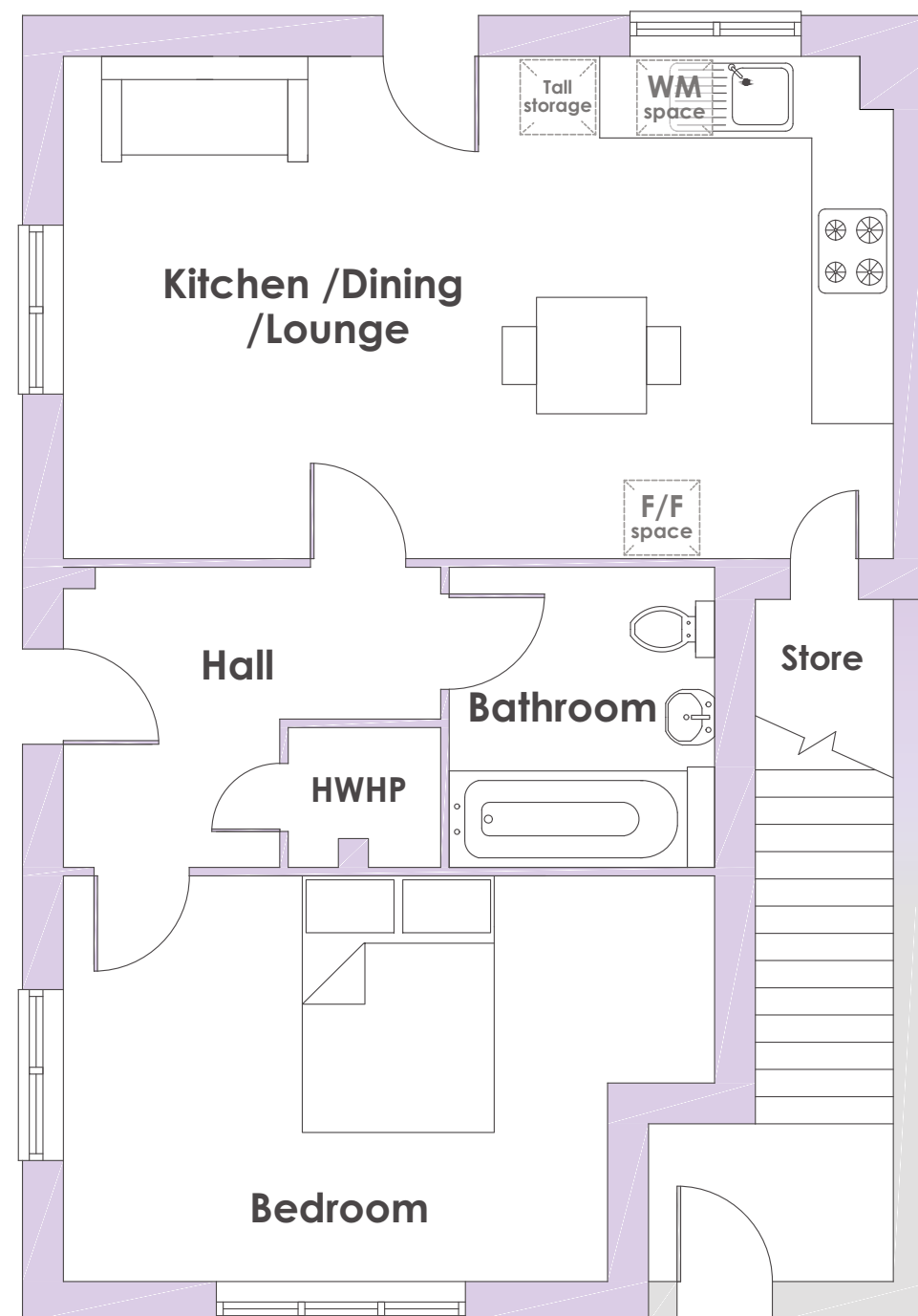
Redrow



Plot 189

The Spey

1 bedroom ground floor apartment



Ground floor

Kitchen / Dining / Lounge

6.10m x 3.69m / 20'0" x 12'1"

Bedroom

4.8m x 2.98m / 15'9" x 9'9"

Bathroom

2.21m x 1.70m / 7'3" x 5'7"



1 bedrooms



Energy
efficient



Turf to rear
garden



10 Year NHBC
warranty



- One-bed energy-efficient home
- Versatile open-plan kitchen with lounge and dining area
- Allocated parking
- Air Source Heat Pump

Plot 190

The Spey

1 bedroom ground floor apartment



1 bedrooms



Energy
efficient



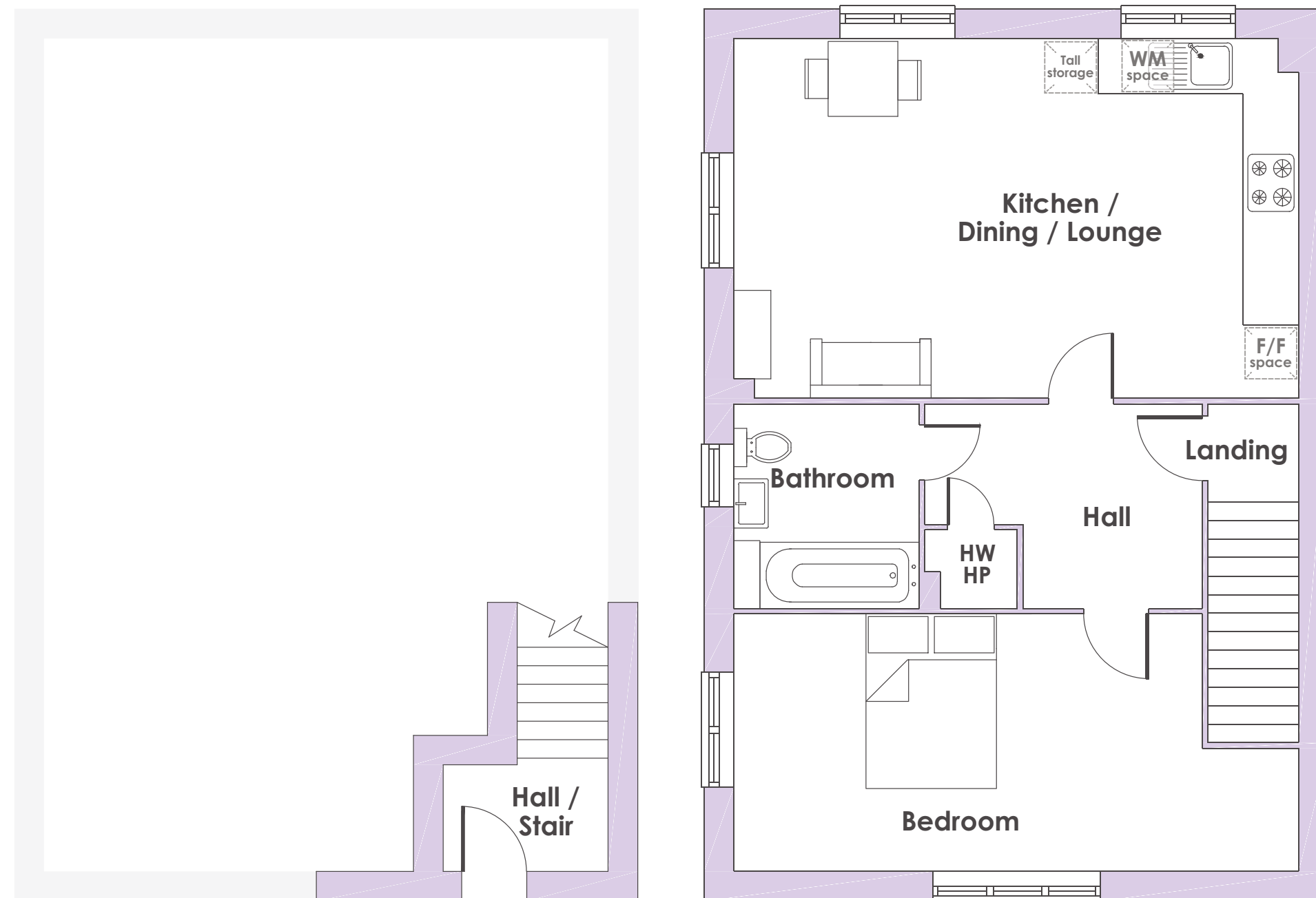
Turf to rear
garden



10 Year NHBC
warranty



- One-bed energy-efficient home
- Allocated parking
- Air Source Heat Pump
- Versatile open-plan kitchen with lounge and dining area



First floor

Kitchen / Dining / Lounge

6.10m x 3.89m / 20'0" x 12'9"

Bedroom

5.06m x 2.78m / 16'7" x 9'2"

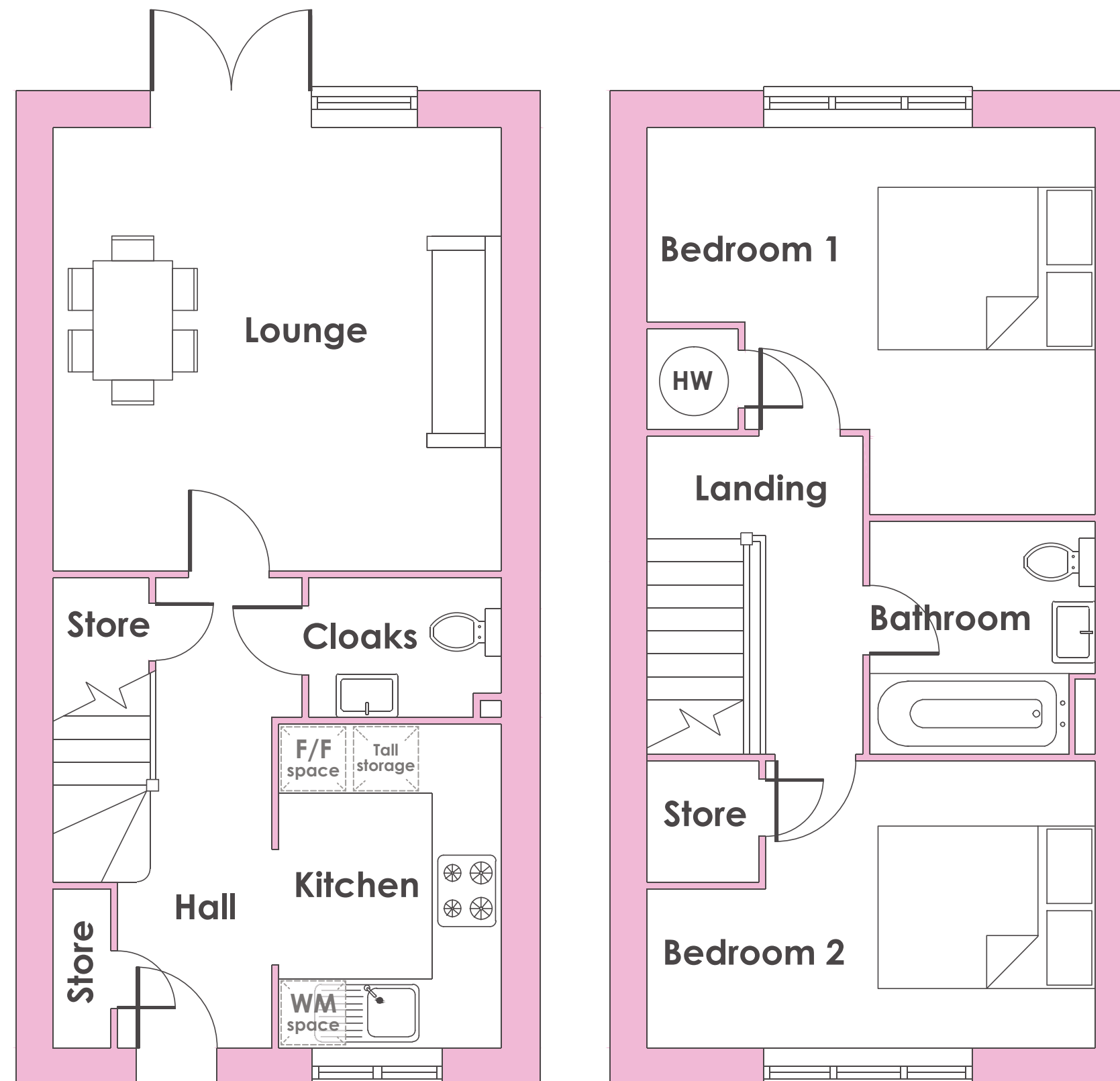
Bathroom

2.21m x 2.00m / 7'3" x 6'7"

Plots: 185 - 188

The Avon

2 bedroom home



Ground floor

Room

3.90m x 3.85m / 12'10" x 12'8"

Room

2.81m x 1.93m / 9'3" x 6'4"

First floor

Bedroom 1

3.90m x 3.35m / 12'10" x 11'0"

Bedroom 2

3.90m x 2.50m / 12'10" x 8'2"

Bathroom

2.02m x 1.96m / 6'8" x 6'5"



2 bedrooms



Energy
efficient



Turf to rear
garden



10 Year NHBC
warranty



- Two-bedroom energy-efficient home
- Air Source Heat Pump
- Lounge with French doors to rear garden
- Wrap-around fitted kitchen
- Plenty of useful storage
- Guest cloakroom
- Two double bedrooms
- Turfed rear garden
- Allocated parking space

Bromford Shared Ownership Specification



Kitchen

Worktop upstands

Oven, hob & extractor

Space for fridge/freezer

Boiler housing unit

Stainless steel splash back



Bathroom

Thermostatic shower mixer over bath

Glass shower screen

Tiling around bath



External

Door number

Allocated Parking*

Outside tap to rear*

PIR lighting to front and rear

Turfed rear garden*

Door bell

Gate with slide bolt and latch*

Paved patio area*

Fencing to rear garden*

*where relevant



General

Smoke detectors

Carbon monoxide detector

BT points

TV points

Slatted shelf to airing cupboard

Window restrictor to top floor windows

LED lighting

We operate a policy of continual product development and all specifications outlined on this website are indicative only. Bromford reserves the right to implement changes without warning.



Who are we?

Since 1963 we have been providing customers with new and affordable homes. We want all of our customers to thrive and believe that with the right homes and someone who believes in their potential, almost anything is possible - with Bromford Shared Ownership we're helping more people than ever before to realise their dreams of owning their home.

Where does my money go when I buy a Bromford home? As a registered charity through the FCA registered societies, all the money Bromford makes goes back into the communities we work in and helps the people we work with thrive for a better safer life.



Shannon Way,
Ashchurch,
Tewkesbury,
GL20 8ND

0800 0852 499
sales@bromford.co.uk
bromfordhomes.co.uk



Follow us on TikTok

Visit the Home Ownership Hub to find
out more about your new home
bromfordhomes.co.uk/home-ownership-hub



Bromford abides by the Consumer Protection
from Unfair Trading Regulations 2008

Bromford.
Shared Ownership