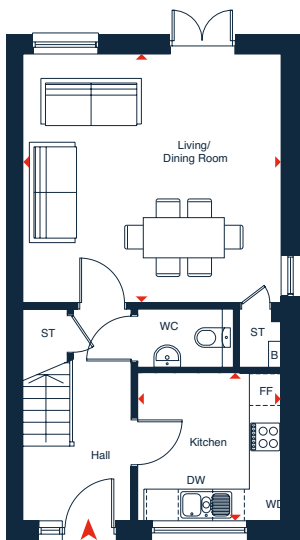
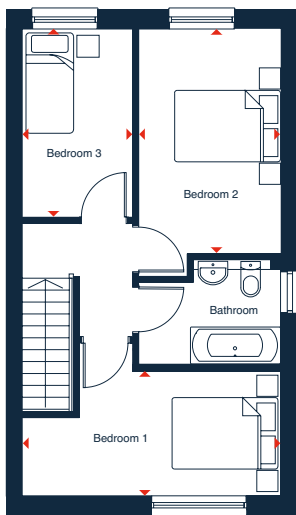


# 3 bedroom house Plots 2



GROUND FLOOR



FIRST FLOOR

Please note appliances are freestanding

## Dimensions

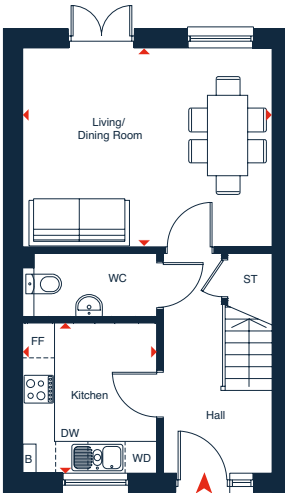
Living / Dining Room	4.90m x 4.72m	16' 1" x 15' 6"
Kitchen	2.81m x 2.73m	9' 3" x 9' 0"
Bedroom 1	4.90m x 2.40m	16' 1" x 7' 10"
Bedroom 2	4.27m x 2.70m	14' 0" x 8' 10"
Bedroom 3	3.58m x 2.11m	11' 9" x 6' 11"

**Total Area 86.8 m<sup>2</sup> / 934 ft<sup>2</sup>**

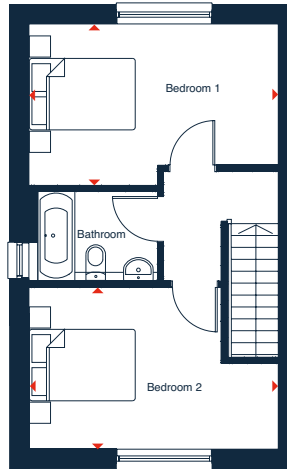
Floor plans are for illustrative purposes only and are not to scale. Measurements, fixtures, fittings, and furniture shown are approximate and for general guidance only.  
No responsibility is taken for any error, omission, or misstatement.

## 2 bedroom house

### Plots 3



GROUND FLOOR



FIRST FLOOR

### Dimensions

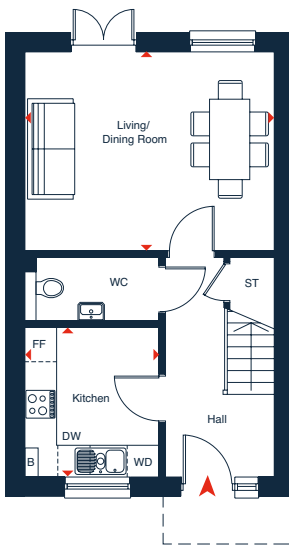
Living / Dining Room	4.74m x 3.78m	15' 6" x 12' 5"
Kitchen	2.86m x 2.56m	9' 5" x 8' 5"
Bedroom 1	4.74m x 3.07m	15' 6" x 10' 1"
Bedroom 2	4.74m x 3.08m	15' 6" x 10' 1"

**Total Area 76.4 m<sup>2</sup> / 822 ft<sup>2</sup>**

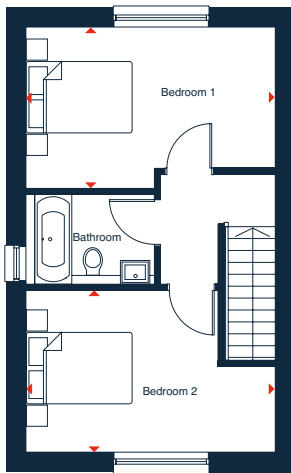
Floor plans are for illustrative purposes only and are not to scale. Measurements, fixtures, fittings, and furniture shown are approximate and for general guidance only. No responsibility is taken for any error, omission, or misstatement.

## 2 bedroom house Plots 5 & 6\*

\* Plot 6 is handed to the plan drawn



GROUND FLOOR



FIRST FLOOR

### Dimensions

Living / Dining Room	4.74m x 3.78m	15' 6" x 12' 5"
Kitchen	2.86m x 2.56m	9' 5" x 8' 5"
Bedroom 1	4.74m x 3.07m	15' 6" x 10' 1"
Bedroom 2	4.74m x 3.08m	15' 6" x 10' 1"

**Total Area 76.4 m<sup>2</sup> / 822 ft<sup>2</sup>**

Floor plans are for illustrative purposes only and are not to scale. Measurements, fixtures, fittings, and furniture shown are approximate and for general guidance only.  
No responsibility is taken for any error, omission, or misstatement.