

LOMBARD SQUARE

Shared Ownership
Collection

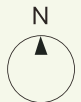




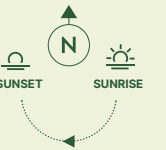
FIND YOUR PERFECT PLACE



This siteplan is indicative only and subject to change. In line with our policy of continuous improvement, we reserve the right to alter the layout, building style, landscaping and specification at any time without notice. Walking distances are approximate and taken from Google maps.



KUBRICK HOUSE



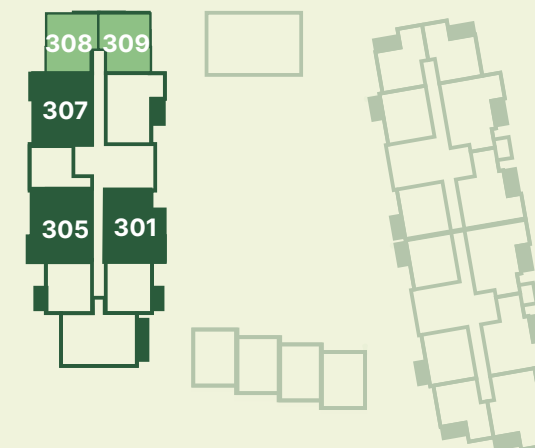
FIRST FLOOR



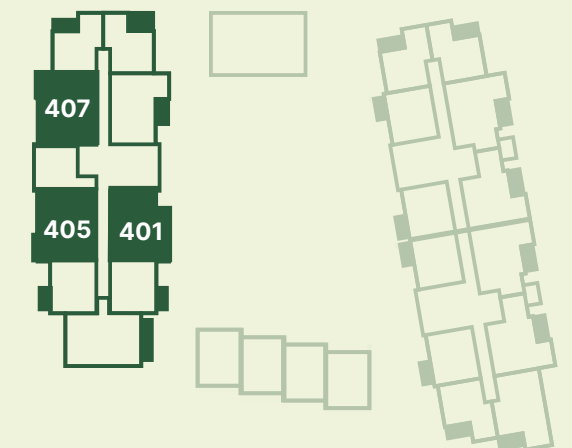
SECOND FLOOR



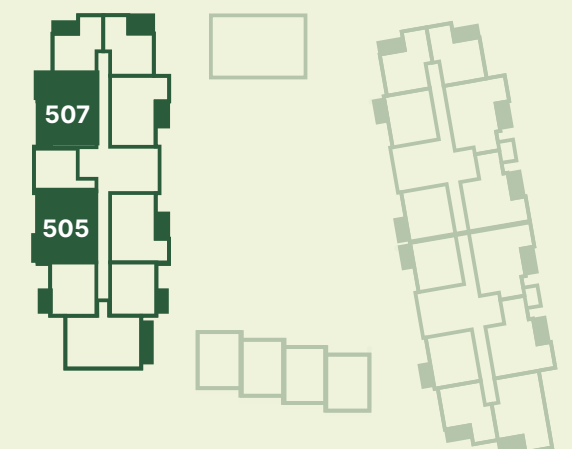
THIRD FLOOR



FOURTH FLOOR



FIFTH FLOOR



1 BED APARTMENT

2 BED APARTMENT

1 BED

KUBRICK HOUSE

Living/Kitchen/Dining	6.95m x 3.60m	22' 9" x 11' 9"
Bedroom	3.18m x 3.75m	10' 5" x 12' 3"
Bathroom	1.98m x 2.28m	6' 5" x 7' 6"
Balcony	1.53m x 3.63m	5' 0" x 11' 11"
Total Internal Area	50.7 sq m	546 sq ft
Total Internal & External Area	56.2 sq m	605 sq ft

1 BED

KUBRICK HOUSE

Living/Kitchen/Dining	3.72m x 6.10m	12' 2" x 20' 0"
Bedroom	3.43m x 3.27m	11' 3" x 10' 9"
Bathroom	1.98m x 2.28m	6' 5" x 7' 6"
Balcony	3.67m x 1.68m	12' 0" x 5' 6"
Total Internal Area	50.5 sq m	544 sq ft
Total Internal & External Area	56.6 sq m	609 sq ft

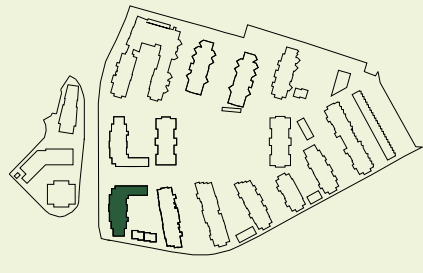
Apartments: 202, 204*



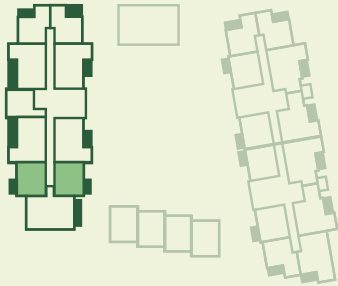
Apartments: 208, 308, 309*



SITE PLAN



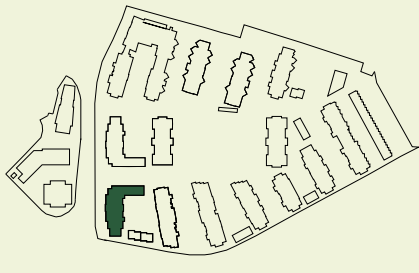
APARTMENT LOCATION



LEVEL/PLOT

2 202, 204*

SITE PLAN



APARTMENT LOCATION



LEVEL/PLOT

3 308, 309

2 208

* Handed to floorplan shown ► Entrance C-Cupboard HIU-Heat Interface Unit MVHR-Mechanical Ventilation with Heat Recovery Utility W-Wardrobe WM-Washing Machine DW-Dishwasher FF-Fridge Freezer

* Handed to floorplan shown ► Entrance C-Cupboard HIU-Heat Interface Unit MVHR-Mechanical Ventilation with Heat Recovery Utility W-Wardrobe WM-Washing Machine DW-Dishwasher FF-Fridge Freezer

1 BED

KUBRICK HOUSE

Living/Kitchen/Dining	3.72m x 6.10m	12' 2" x 20' 0"
Bedroom	3.43m x 3.27m	11' 3" x 10' 9"
Bathroom	1.98m x 2.28m	6' 5" x 7' 6"
Balcony	3.67m x 1.68m	12'0" x 5' 6"
Total Internal Area	50.5 sq m	544 sq ft
Total Internal & External Area	58.6 sq m	631 sq ft

1 BED

KUBRICK HOUSE

Living/Kitchen/Dining	6.95m x 3.60m	22' 9" x 11' 9"
Bedroom	3.18m x 3.75m	10' 5" x 12' 3"
Bathroom	1.98m x 2.28m	6' 5" x 7' 6"
Terrace	1.89m x 7.19m	6' 2" x 23' 7"
Total Internal Area	50.7 sq m	546 sq ft
Total Internal & External Area	64.2 sq m	691 sq ft

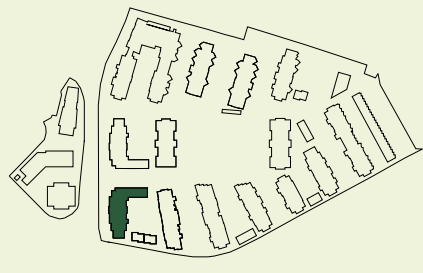
Apartment: 209



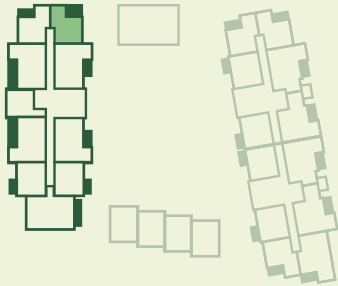
Apartment: 103



SITE PLAN



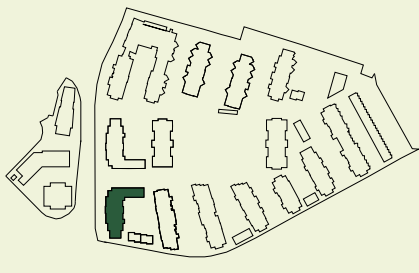
APARTMENT LOCATION



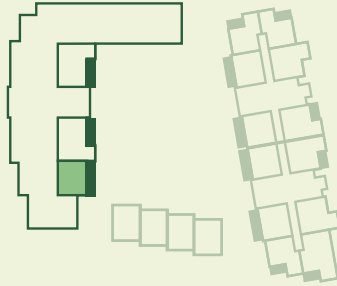
LEVEL/PLOT

2 209

SITE PLAN



APARTMENT LOCATION



LEVEL/PLOT

1 103

► Entrance C-Cupboard HIU-Heat Interface Unit MVHR-Mechanical Ventilation with Heat Recovery Utility
W-Wardrobe WM-Washing Machine DW-Dishwasher FF-Fridge Freezer

► Entrance C-Cupboard HIU-Heat Interface Unit MVHR-Mechanical Ventilation with Heat Recovery Utility
W-Wardrobe WM-Washing Machine DW-Dishwasher FF-Fridge Freezer

2 BED

KUBRICK HOUSE

Living/Kitchen/Dining	8.62m x 3.34m	28' 3" x 10' 11"
Main Bedroom	4.10m x 2.75m	13' 5" x 9' 0"
Bedroom 2	2.80m x 4.04m	9' 2" x 13' 3"
En-Suite Bathroom	1.68m x 2.28m	5' 6" x 7' 6"
Shower Room	1.98m x 2.28m	6' 5" x 7' 6"
Balcony	1.83m x 3.81m	6' 0" x 12' 6"
Total Internal Area	73.9 sq m	795 sq ft
Total Internal & External Area	80.8 sq m	869 sq ft

2 BED

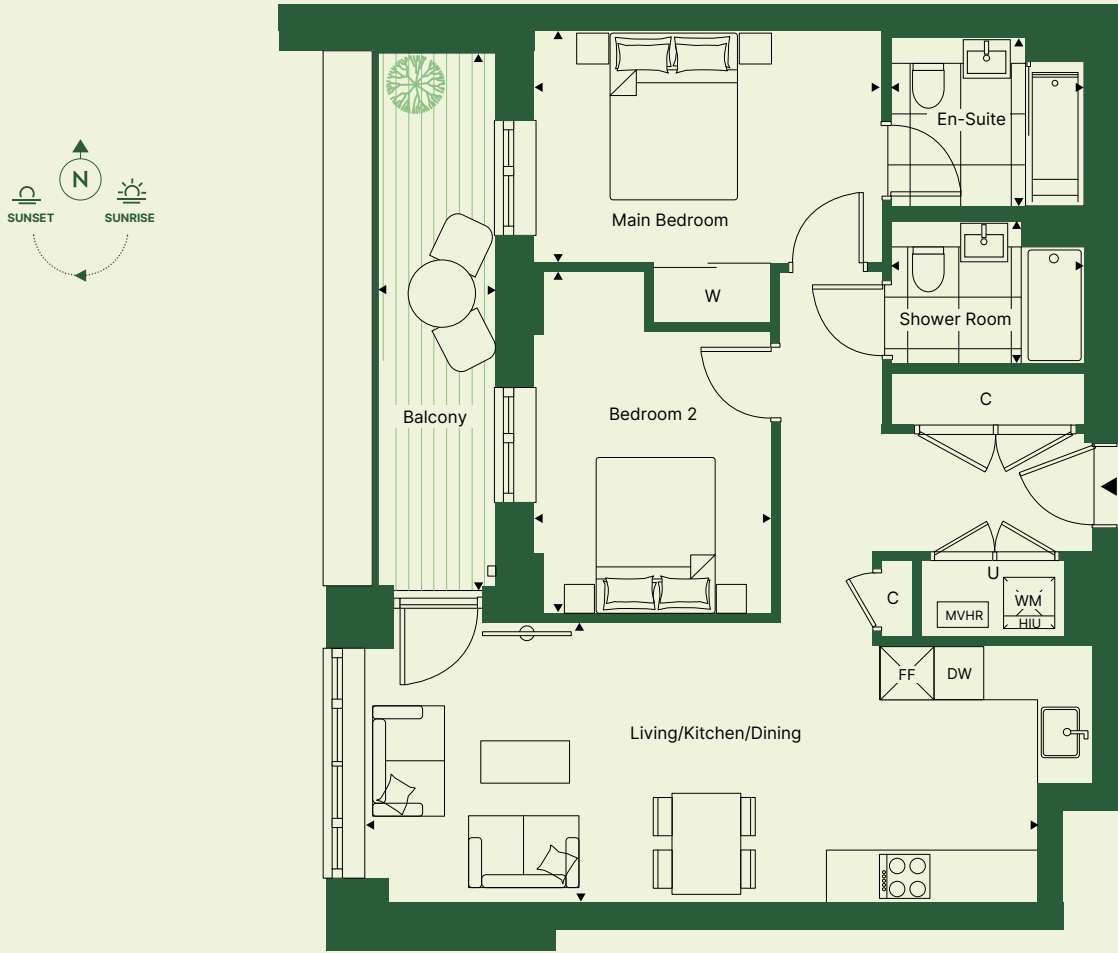
KUBRICK HOUSE

Living/Kitchen/Dining	8.63m x 3.34m	28' 3" x 10' 11"
Main Bedroom	4.10m x 2.75m	13' 5" x 9' 0"
Bedroom 2	2.80m x 4.04m	9' 2" x 13' 3"
En-Suite Bathroom	1.68m x 2.28m	5' 6" x 7' 6"
Shower Room	1.98m x 2.28m	6' 5" x 7' 6"
Balcony	1.42m x 6.32m	4' 8" x 20' 9"
Total Internal Area	73.9 sq m	95 sq ft
Total Internal & External Area	82.8 sq m	890 sq ft

Apartment: 210



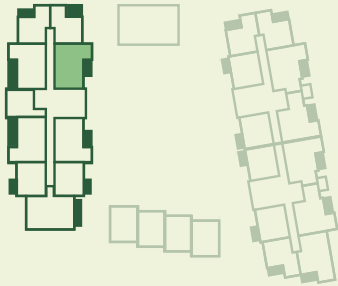
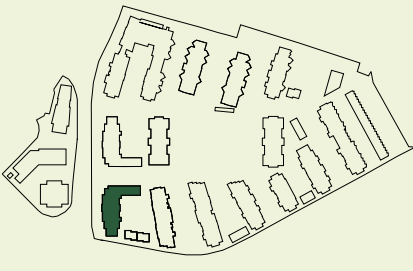
Apartments: 205, 305, 405, 505



SITE PLAN

APARTMENT LOCATION

LEVEL/PLOT

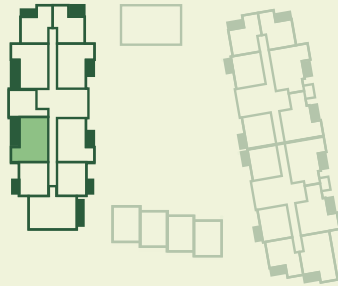
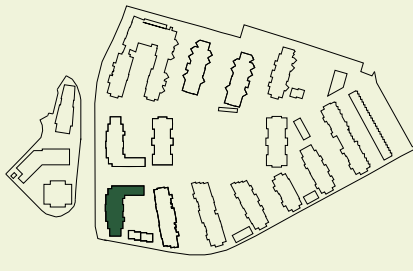


2 210

SITE PLAN

APARTMENT LOCATION

LEVEL/PLOT



5 505

4 405

3 305

2 205

► Entrance C-Cupboard HIU-Heat Interface Unit MVHR-Mechanical Ventilation with Heat Recovery Utility
W-Wardrobe WM-Washing Machine DW-Dishwasher FF-Fridge Freezer

► Entrance C-Cupboard HIU-Heat Interface Unit MVHR-Mechanical Ventilation with Heat Recovery Utility
W-Wardrobe WM-Washing Machine DW-Dishwasher FF-Fridge Freezer

2 BED

KUBRICK HOUSE


Living/Kitchen/Dining	8.62m x 3.34m	28' 3" x 10' 11"
Main Bedroom	4.10m x 2.75m	13' 5" x 9' 0"
Bedroom 2	2.80m x 4.04m	9' 2" x 13' 3"
En-Suite Bathroom	1.68m x 2.28m	5' 6" x 7' 6"
Shower Room	1.98m x 2.28m	6' 5" x 7' 6"
Balcony	1.42m x 6.32m	4' 8" x 20' 9"
Total Internal Area	74.9 sq m	806 sq ft
Total Internal & External Area	83.8 sq m	901 sq ft

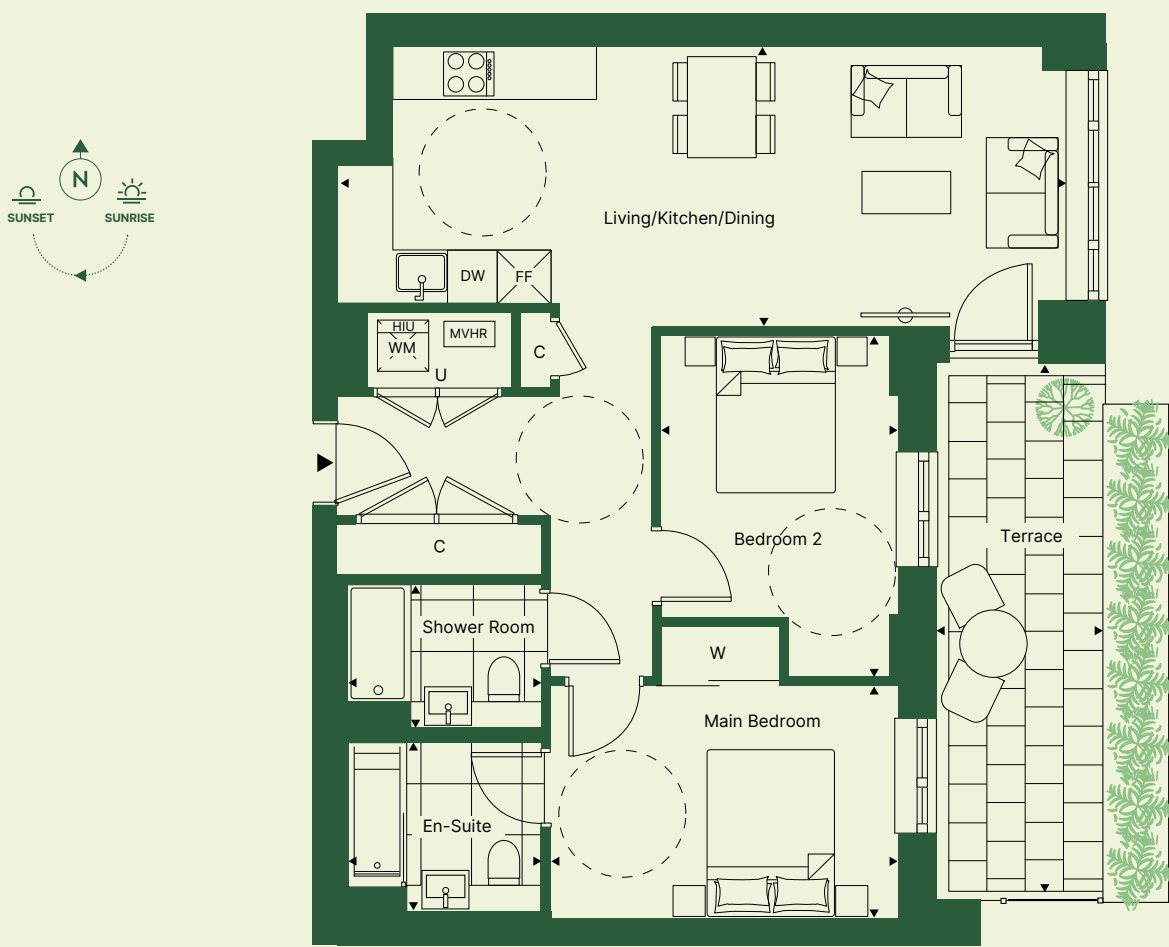
2 BED

KUBRICK HOUSE

Living/Kitchen/Dining	8.62m x 3.34m	28' 3" x 10' 11"
Main Bedroom	4.10m x 2.75m	13' 5" x 9' 0"
Bedroom 2	2.80m x 4.04m	9' 2" x 13' 3"
En-Suite Bathroom	1.68m x 2.28m	5' 6" x 7' 6"
Shower Room	1.98m x 2.28m	6' 5" x 7' 6"
Terrace	2.06m x 6.21m	6' 9" x 20' 4"
Total Internal Area	73.9 sq m	795 sq ft
Total Internal & External Area	86.6 sq m	931 sq ft

Apartments: 207, 507

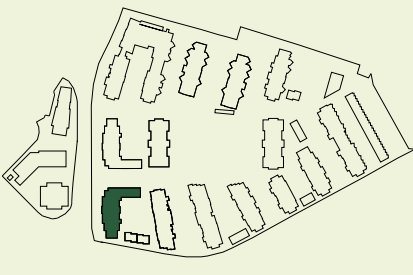
Apartment: 101 



SITE PLAN

APARTMENT LOCATION

LEVEL/PLOT

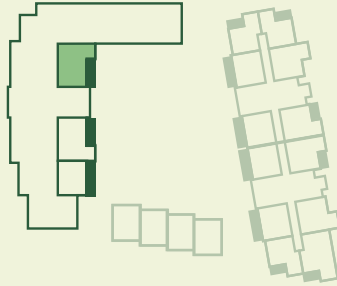
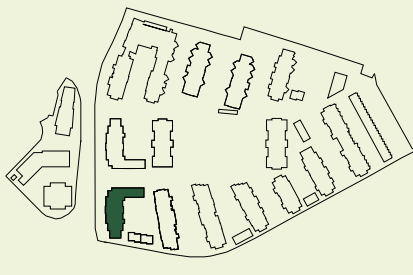


5	507
2	207

SITE PLAN

APARTMENT LOCATION

LEVEL/PLOT



1	101
---	-----

► Entrance C-Cupboard HIU-Heat Interface Unit MVHR-Mechanical Ventilation with Heat Recovery Utility
W-Wardrobe WM-Washing Machine DW-Dishwasher FF-Fridge Freezer

► Entrance C-Cupboard HIU-Heat Interface Unit MVHR-Mechanical Ventilation with Heat Recovery Utility
W-Wardrobe WM-Washing Machine DW-Dishwasher FF-Fridge Freezer

2 BED

KUBRICK HOUSE

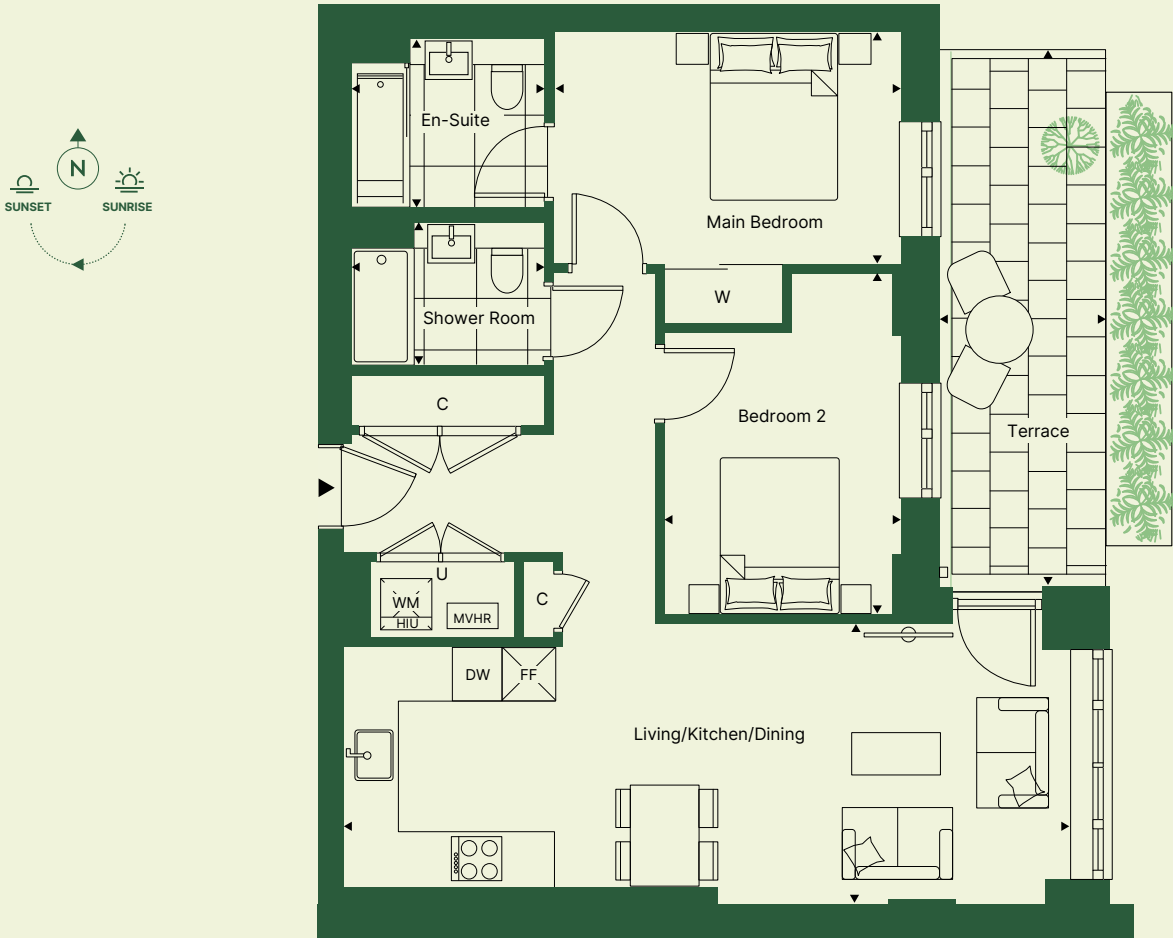
Living/Kitchen/Dining	8.62m x 3.34m	28' 3" x 10' 11"
Main Bedroom	4.10m x 2.75m	13' 5" x 9' 0"
Bedroom 2	2.80m x 4.04m	9' 2" x 13' 3"
En-Suite Bathroom	1.68m x 2.28m	5' 6" x 7' 6"
Shower Room	1.98m x 2.28m	6' 5" x 7' 6"
Terrace	2.04m x 6.43m	6' 8" x 21' 1"
Total Internal Area	74 sq m	797 sq ft
Total Internal & External Area	87.1 sq m	937 sq ft

2 BED

KUBRICK HOUSE

Living/Kitchen/Dining	8.62m x 3.34m	28' 3" x 10' 11"
Main Bedroom	4.10m x 2.75m	13' 5" x 9' 0"
Bedroom 2	2.80m x 4.04m	9' 2" x 13' 3"
En-Suite Bathroom	1.68m x 2.28m	5' 6" x 7' 6"
Shower Room	1.98m x 2.28m	6' 5" x 7' 6"
Balcony	1.83m x 3.81m	6' 0" x 12' 6"
Total Internal Area	74.9 sq m	806 sq ft
Total Internal & External Area	81.8 sq m	880 sq ft

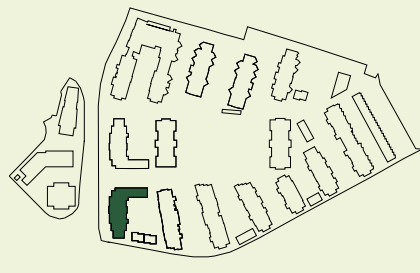
Apartment: 102



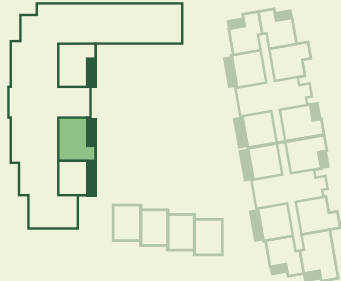
Apartment: 201, 301*, 307, 401*, 407



SITE PLAN



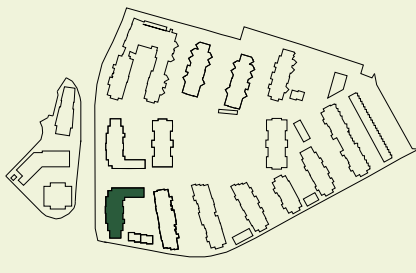
APARTMENT LOCATION



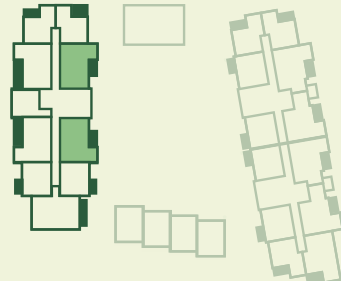
LEVEL/PLOT

1 102

SITE PLAN



APARTMENT LOCATION



LEVEL/PLOT

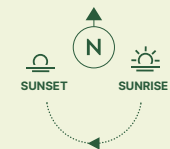
4 401*, 407
3 301*, 307
2 201

► Entrance C-Cupboard HIU-Heat Interface Unit MVHR-Mechanical Ventilation with Heat Recovery Utility
W-Wardrobe WM-Washing Machine DW-Dishwasher FF-Fridge Freezer

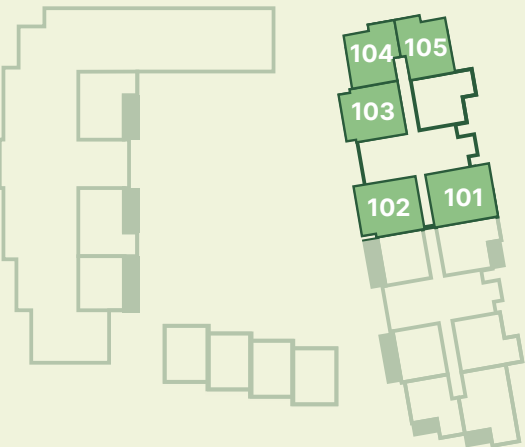
* Handed to floorplan shown ► Entrance C-Cupboard HIU-Heat Interface Unit MVHR-Mechanical Ventilation with Heat Recovery Utility
W-Wardrobe WM-Washing Machine DW-Dishwasher FF-Fridge Freezer



DRAY HOUSE



FIRST FLOOR



SECOND FLOOR



THIRD FLOOR



FOURTH FLOOR



FIFTH FLOOR



1 BED APARTMENT

2 BED APARTMENT

1 BED DRAY HOUSE

Living/Kitchen/Dining	6.95m x 3.60m	22' 9" x 11' 9"
Bedroom	3.18m x 3.75m	10' 5" x 12' 3"
Bathroom	1.98m x 2.28m	6' 5" x 7' 6"
Balcony	1.53m x 3.63m	5' 0" x 11' 11"
Total Internal Area	50.6 sq m	545 sq ft
Total Internal & External Area	56.1 sq m	604 sq ft

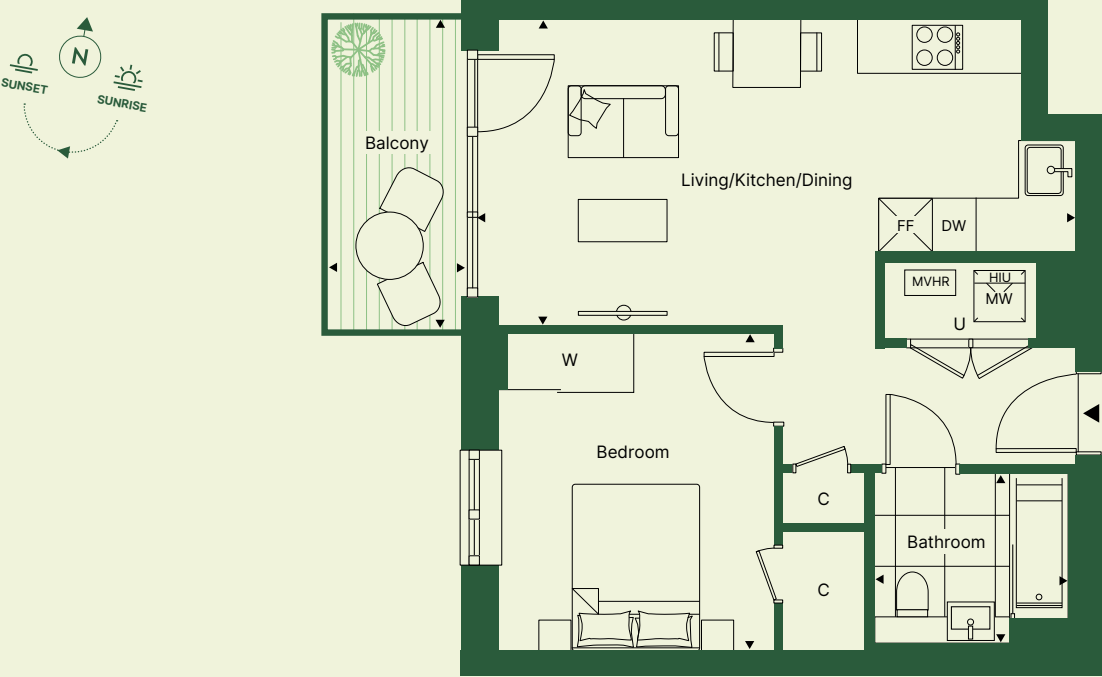
1 BED DRAY HOUSE

Living/Kitchen/Dining	7.07m x 3.61m	23' 2" x 11' 10"
Bedroom	3.26m x 3.75m	10' 8" x 12' 3"
Bathroom	1.98m x 2.28m	6' 5" x 7' 6"
Balcony	1.61m x 3.63m	5' 3" x 11' 11"
Total Internal Area	50.7 sq m	546 sq ft
Total Internal & External Area	56.5 sq m	608 sq ft

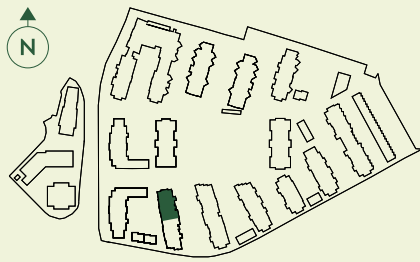
Apartment: 206



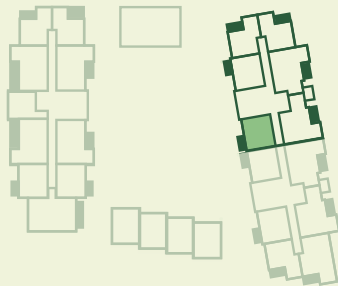
Apartments: 201, 301



SITE PLAN



APARTMENT LOCATION



LEVEL/PLOT

2 206

SITE PLAN



APARTMENT LOCATION



LEVEL/PLOT

3 301

2 201

► Entrance C-Cupboard HIU-Heat Interface Unit MVHR-Mechanical Ventilation with Heat Recovery Utility
W-Wardrobe WM-Washing Machine DW-Dishwasher FF-Fridge Freezer

► Entrance C-Cupboard HIU-Heat Interface Unit MVHR-Mechanical Ventilation with Heat Recovery Utility
W-Wardrobe WM-Washing Machine DW-Dishwasher FF-Fridge Freezer

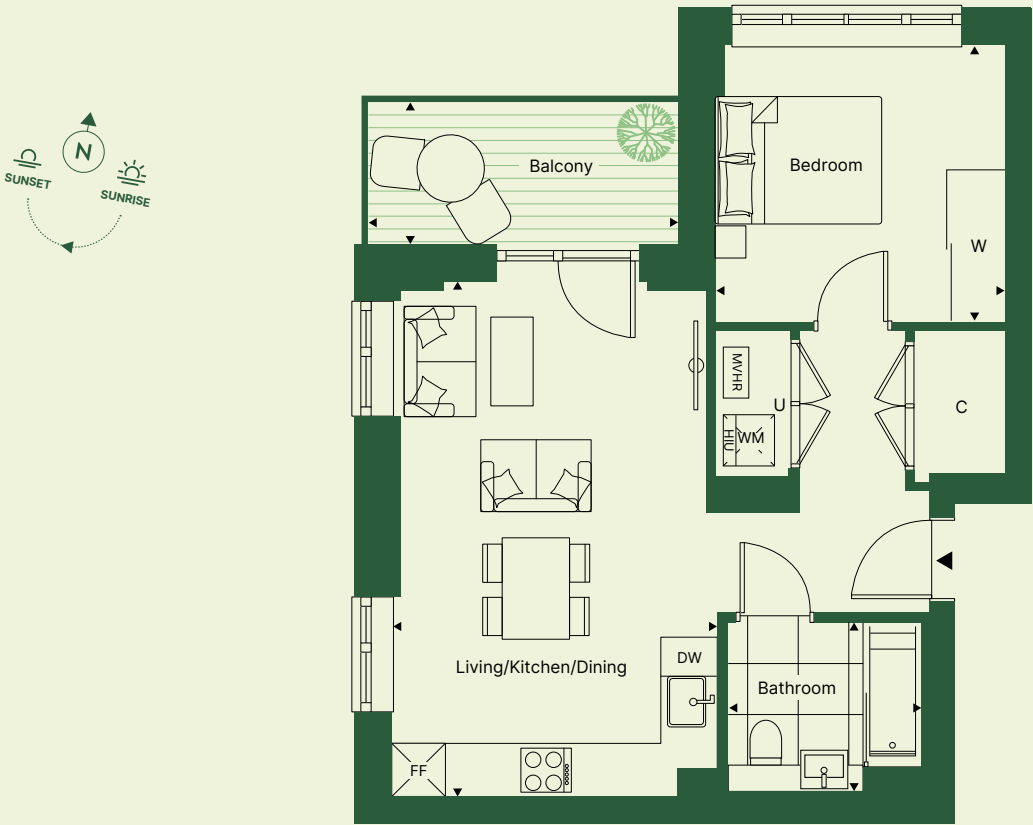
1 BED DRAY HOUSE

Living/Kitchen/Dining	3.72m x 6.10m	12' 2" x 20' 0"
Bedroom	3.43m x 3.27m	11' 3" x 10' 9"
Bathroom	1.98m x 2.28m	6' 5" x 7' 6"
Balcony	3.67m x 1.68m	12'0" x 5' 6"
Total Internal Area	50.5 sq m	544 sq ft
Total Internal & External Area	56.6 sq m	609 sq ft

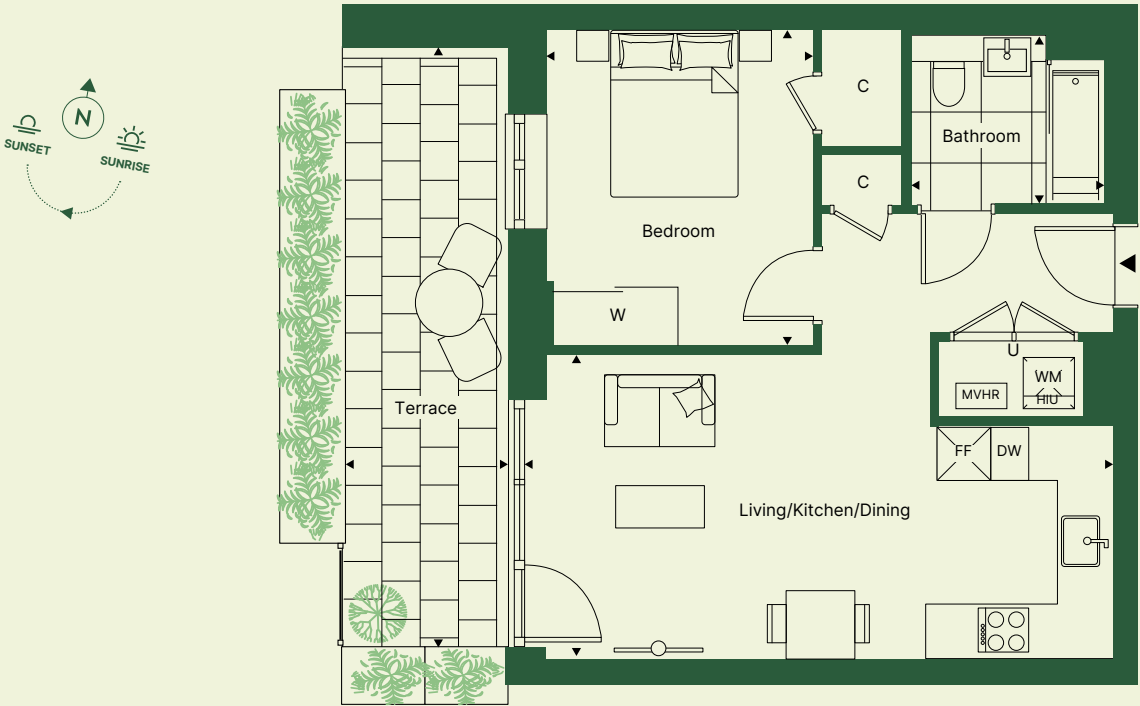
1 BED DRAY HOUSE

Living/Kitchen/Dining	6.95m x 3.60m	22' 9" x 11' 9"
Bedroom	3.18m x 3.75m	10' 5" x 12' 3"
Bathroom	1.98m x 2.28m	6' 5" x 7' 6"
Terrace	2.04m x 6.43m	6' 8" x 21' 1"
Total Internal Area	50.6 sq m	545 sq ft
Total Internal & External Area	65 sq m	699 sq ft

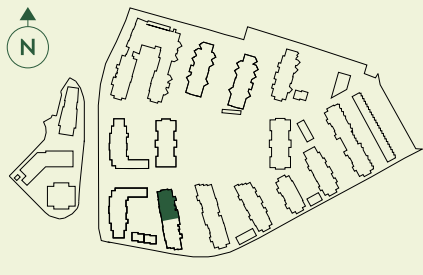
Apartments: 104, 105*, 202, 203*, 302, 303*



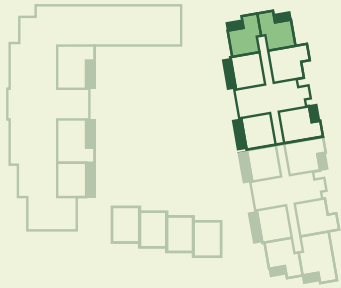
Apartment: 102



SITE PLAN



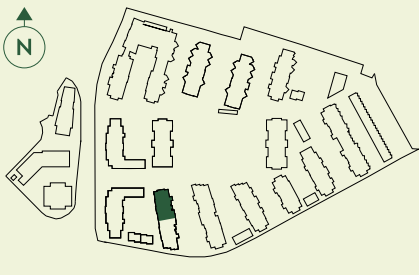
APARTMENT LOCATION



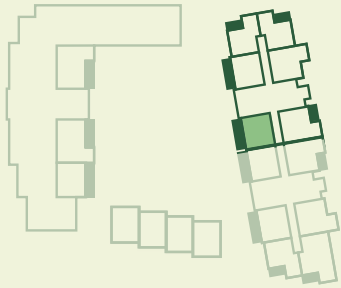
LEVEL/PLOT

3	302, 303
2	202, 203
1	104, 105

SITE PLAN



APARTMENT LOCATION



LEVEL/PLOT

1	102
---	-----

* Handed to floorplan shown ▶ Entrance C-Cupboard HIU-Heat Interface Unit MVHR-Mechanical Ventilation with Heat Recovery Utility W-Wardrobe WM-Washing Machine DW-Dishwasher FF-Fridge Freezer

▶ Entrance C-Cupboard HIU-Heat Interface Unit MVHR-Mechanical Ventilation with Heat Recovery Utility W-Wardrobe WM-Washing Machine DW-Dishwasher FF-Fridge Freezer

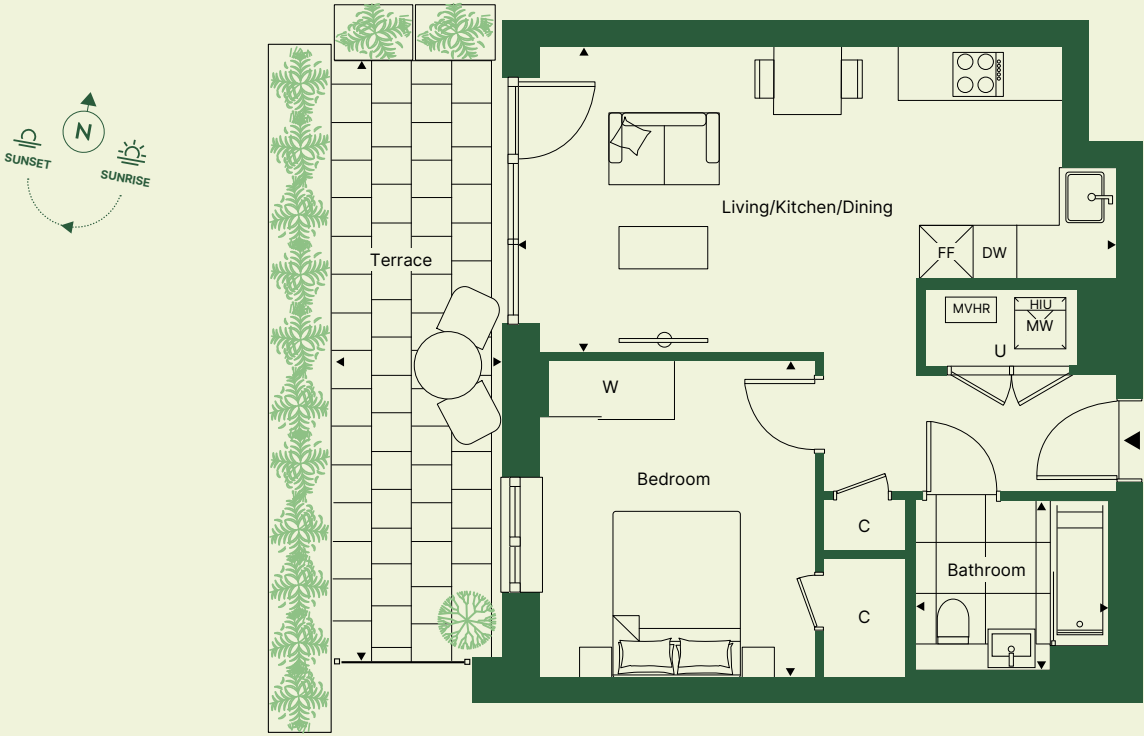
1 BED DRAY HOUSE

Living/Kitchen/Dining	7.07m x 3.61m	23' 2" x 11' 10"
Bedroom	3.26m x 3.75m	10' 8" x 12' 3"
Bathroom	1.98m x 2.28m	6' 5" x 7' 6"
Terrace	2.00m x 7.09m	6' 6" x 23' 3"
Total Internal Area	50.7 sq m	546 sq ft
Total Internal & External Area	64.8 sq m	697 sq ft

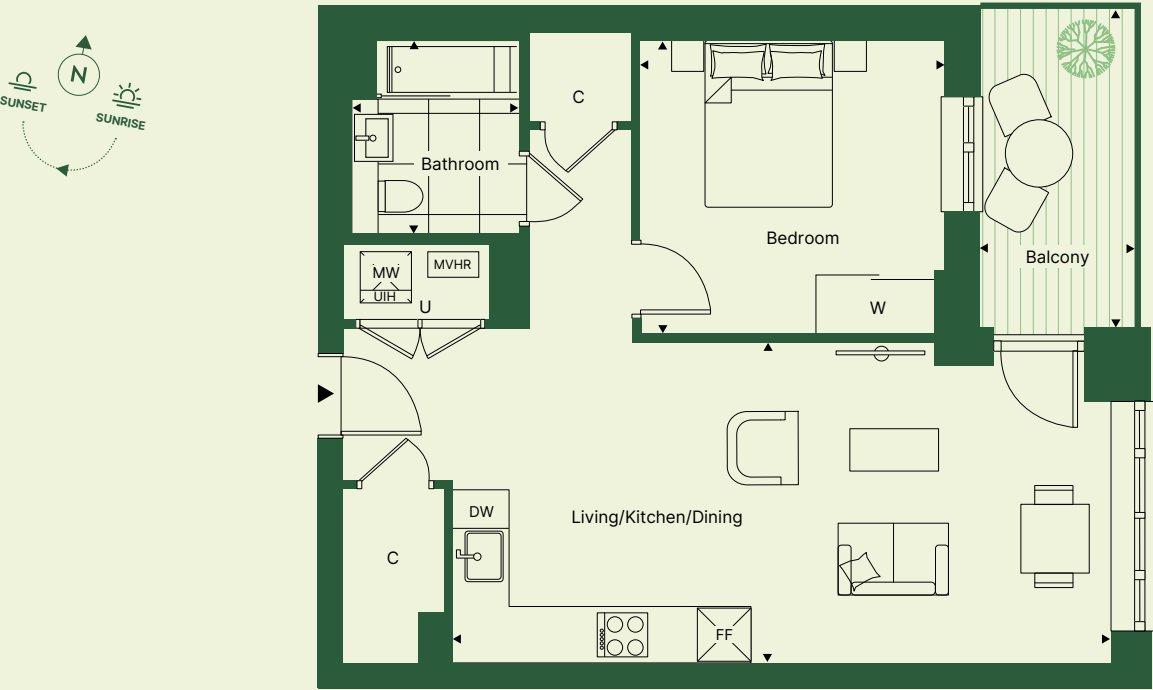
1 BED DRAY HOUSE

Living/Kitchen/Dining	7.82m x 3.84m	25' 7" x 12' 7"
Bedroom	3.59m x 3.40m	11' 9" x 11' 2"
Bathroom	1.98m x 2.28m	6' 5" x 7' 6"
Balcony	1.68m x 3.71m	5' 6" x 12' 2"
Total Internal Area	59.6 sq m	642 sq ft
Total Internal & External Area	65.8 sq m	708 sq ft

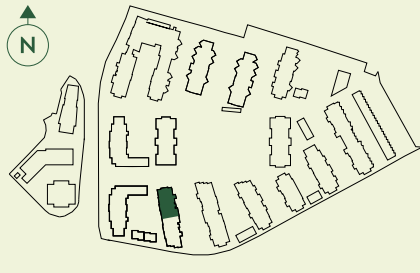
Apartment: 103



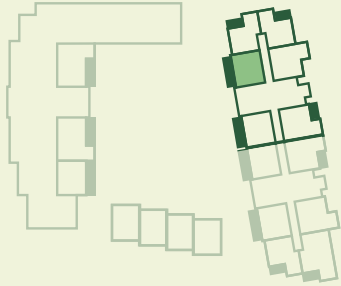
Apartment: 101



SITE PLAN



APARTMENT LOCATION



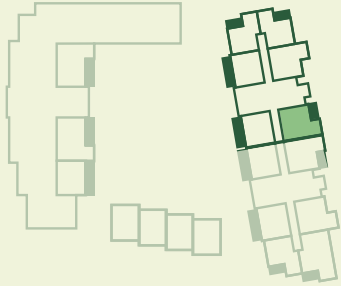
LEVEL/PLOT

1 103

SITE PLAN



APARTMENT LOCATION



LEVEL/PLOT

1 101

► Entrance **C**-Cupboard **HIU**-Heat Interface Unit **MVHR**-Mechanical Ventilation with Heat Recovery Utility
W-Wardrobe **WM**-Washing Machine **DW**-Dishwasher **FF**-Fridge Freezer

* Handed to floorplan shown ► Entrance **C**-Cupboard **HIU**-Heat Interface Unit **MVHR**-Mechanical Ventilation with Heat Recovery Utility
W-Wardrobe **WM**-Washing Machine **DW**-Dishwasher **FF**-Fridge Freezer

2 BED DRAY HOUSE

Living/Kitchen/Dining	7.21m x 3.52m	23' 8" x 11' 6"
Main Bedroom	3.49m x 3.45m	11' 5" x 11' 4"
Bedroom 2	3.17m x 3.72m	10' 5" x 12' 2"
En-Suite Bathroom	1.68m x 2.28m	5' 6" x 7' 6"
Shower Room	1.98m x 2.28m	6' 5" x 7' 6"
Balcony	1.65m x 3.71m	5' 5" x 12' 2"
Total Internal Area	72 sq m	775 sq ft
Total Internal & External Area	78.1 sq m	840 sq ft

2 BED DRAY HOUSE

Living/Kitchen/Dining	7.21m x 4.00m	23' 8" x 13' 1"
Main Bedroom	6.41m x 3.01m	21' 0" x 9' 10"
Bedroom 2	3.39m x 3.40m	11' 1" x 11' 2"
En-Suite Bathroom	1.68m x 2.28m	5' 6" x 7' 6"
Shower Room	1.98m x 2.28m	6' 5" x 7' 6"
Balcony	1.68m x 3.71m	5' 6" x 12' 2"
Total Internal Area	77 sq m	829 sq ft
Total Internal & External Area	83.2 sq m	896 sq ft

Apartments: 205, 305, 405, 505

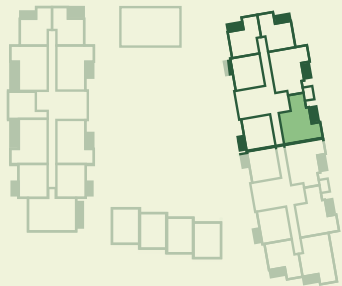
Apartment: 204 



SITE PLAN

APARTMENT LOCATION

LEVEL/PLOT

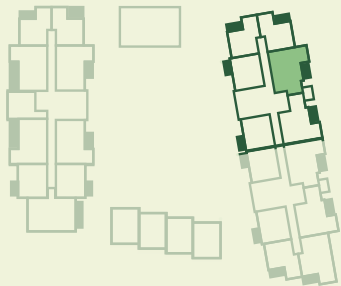
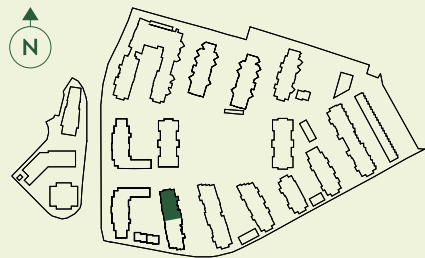


5	505
4	405
3	305
2	205

SITE PLAN

APARTMENT LOCATION

LEVEL/PLOT



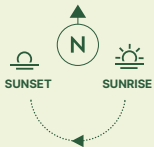
2	204
---	-----

► Entrance **C**-Cupboard **HIU**-Heat Interface Unit **MVHR**-Mechanical Ventilation with Heat Recovery Utility
W-Wardrobe **WM**-Washing Machine **DW**-Dishwasher **FF**-Fridge Freezer

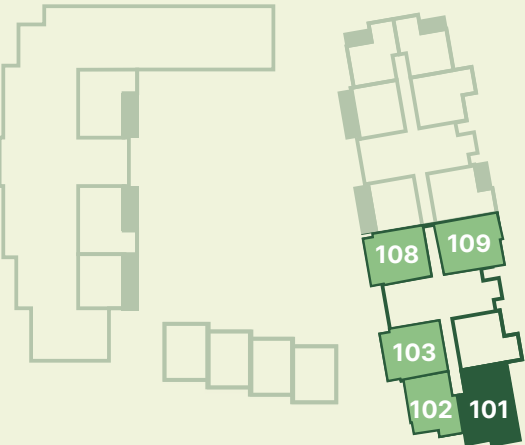
► Entrance **C**-Cupboard **HIU**-Heat Interface Unit **MVHR**-Mechanical Ventilation with Heat Recovery Utility
W-Wardrobe **WM**-Washing Machine **DW**-Dishwasher **FF**-Fridge Freezer



BURRELL HOUSE



FIRST FLOOR



SECOND FLOOR



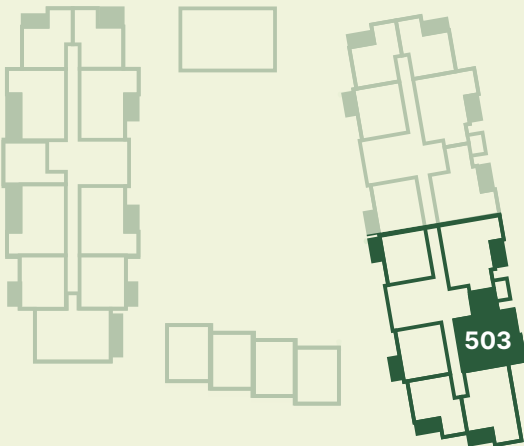
THIRD FLOOR



FOURTH FLOOR



FIFTH FLOOR



1 BED APARTMENT 2 BED APARTMENT

1 BED

BURRELL HOUSE

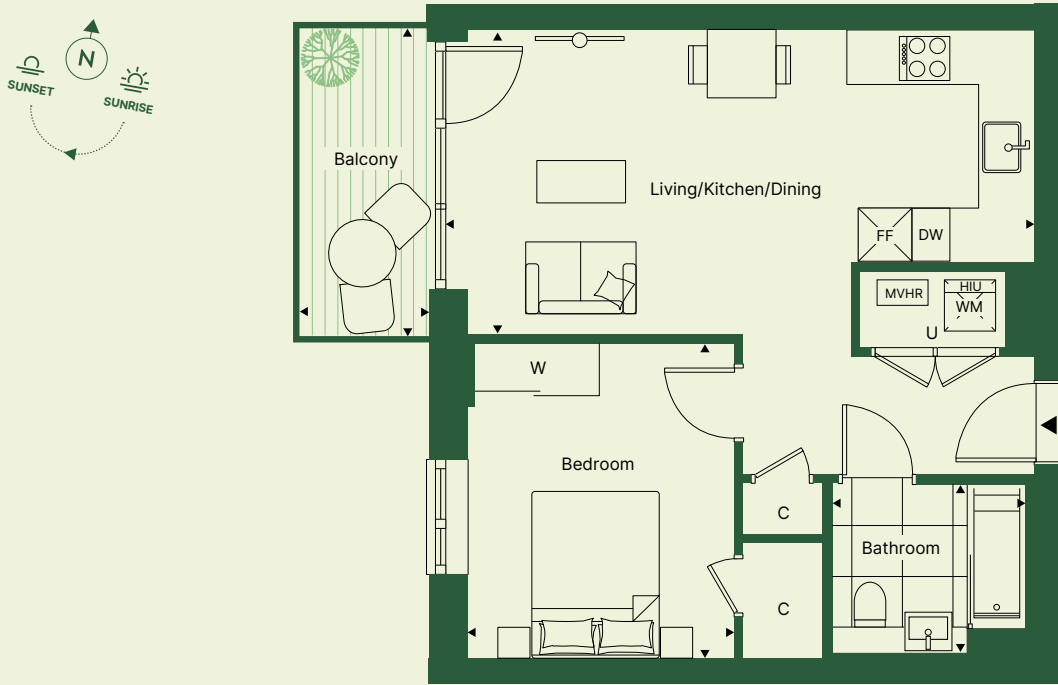
Living/Kitchen/Dining	6.95m x 3.60m	22' 9" x 11' 9"
Bedroom	3.18m x 3.75m	10' 5" x 12' 3"
Bathroom	1.98m x 2.28m	6' 5" x 7' 6"
Balcony	1.53m x 3.63m	5' 0" x 11' 11"
Total Internal Area	50.7 sq m	546 sq ft
Total Internal & External Area	56.2 sq m	605 sq ft

1 BED

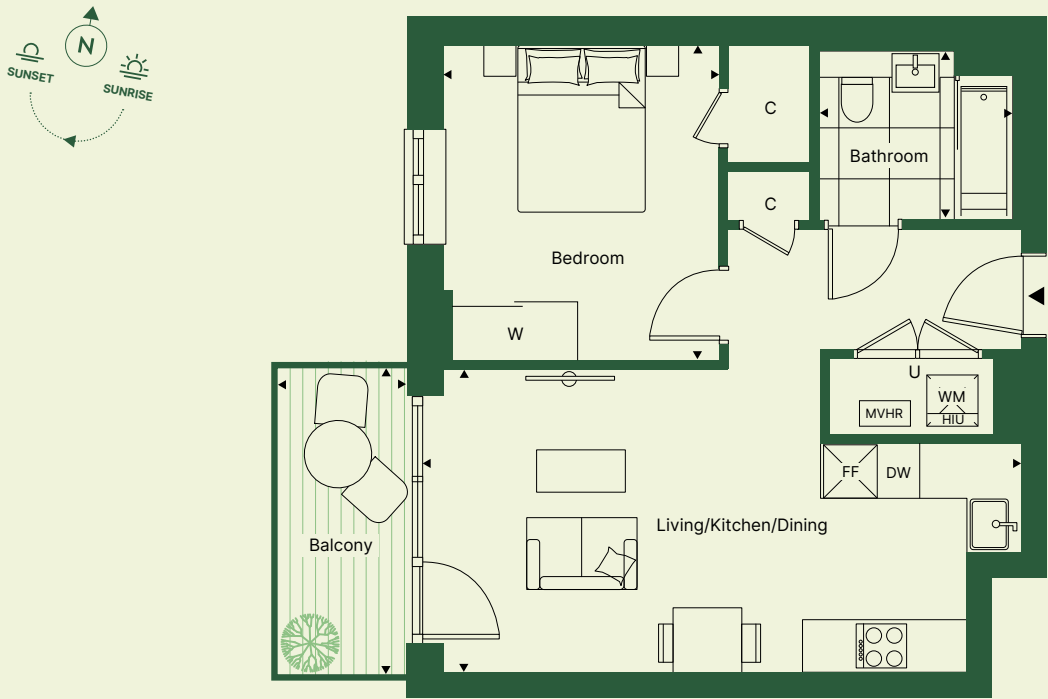
BURRELL HOUSE

Living/Kitchen/Dining	7.07m x 3.61m	23' 2" x 11' 10"
Bedroom	3.26m x 3.75m	10' 8" x 12' 3"
Bathroom	1.98m x 2.28m	6' 5" x 7' 6"
Balcony	1.61 x 3.61m	5' 3" x 11' 10"
Total Internal Area	50.7 sq m	546 sq ft
Total Internal & External Area	56.5 sq m	608 sq ft

Apartment: 201



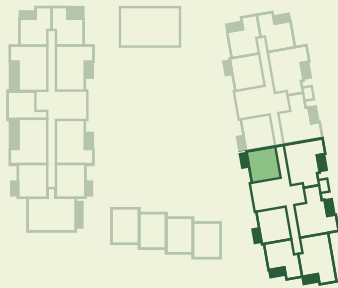
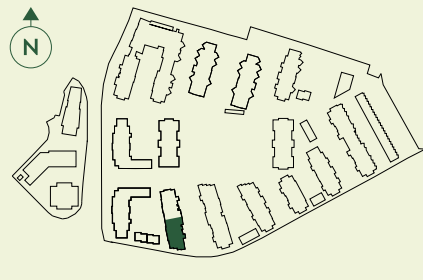
Apartment: 206



SITE PLAN

APARTMENT LOCATION

LEVEL/PLOT

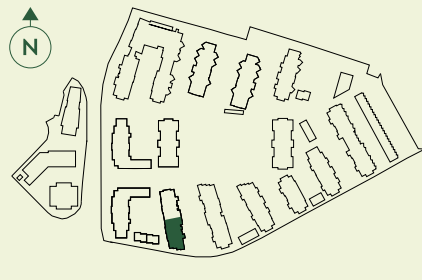


2 201

SITE PLAN

APARTMENT LOCATION

LEVEL/PLOT



2 206

► Entrance C-Cupboard HIU-Heat Interface Unit MVHR-Mechanical Ventilation with Heat Recovery Utility
W-Wardrobe WM-Washing Machine DW-Dishwasher FF-Fridge Freezer

► Entrance C-Cupboard HIU-Heat Interface Unit MVHR-Mechanical Ventilation with Heat Recovery Utility
W-Wardrobe WM-Washing Machine DW-Dishwasher FF-Fridge Freezer

1 BED

BURRELL HOUSE

Living/Kitchen/Dining	3.73m x 6.11m	12' 2" x 20' 0"
Bedroom	3.43m x 3.40m	11' 3" x 11' 2"
Bathroom	1.68m x 2.28m	5' 6" x 7' 6"
Balcony	3.57m x 1.68m	11' 8" x 5' 6"
Total Internal Area	51.2 sq m	551 sq ft
Total Internal & External Area	57.1 sq m	614 sq ft

1 BED

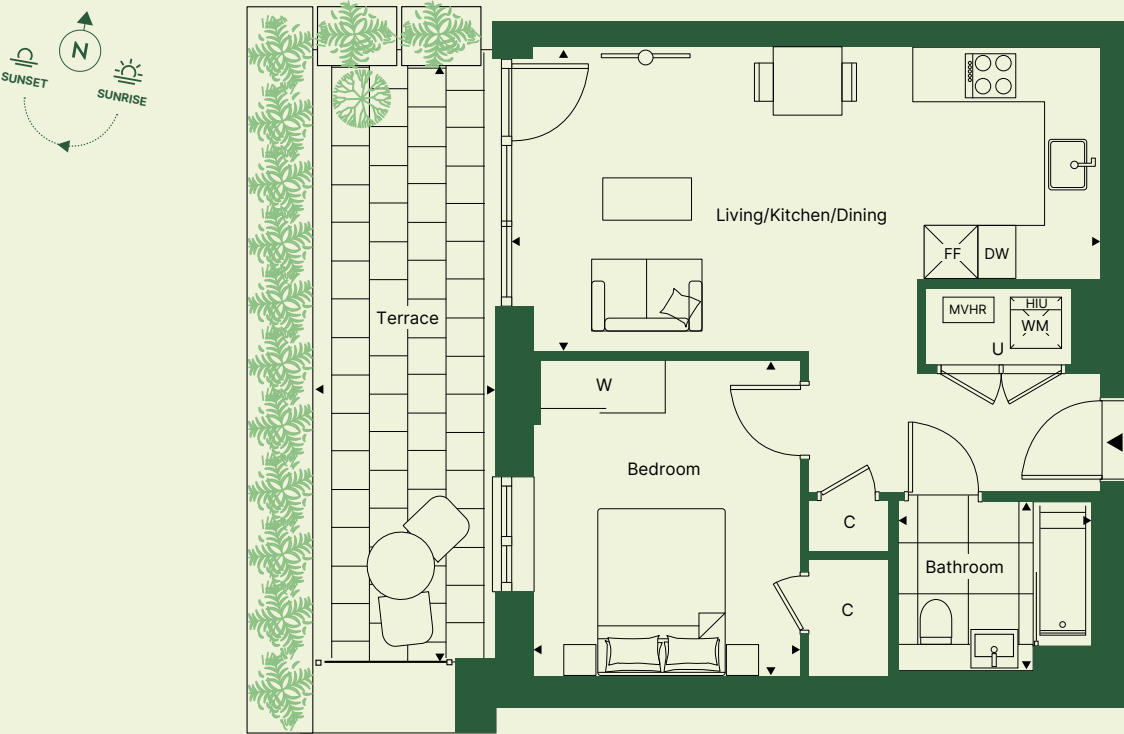
BURRELL HOUSE

Living/Kitchen/Dining	6.95m x 3.60m	22' 9" x 11' 9"
Bedroom	3.18m x 3.75m	10' 5" x 12' 3"
Bathroom	1.98m x 2.28m	6' 5" x 7' 6"
Terrace	1.98m x 6.99m	6' 6" x 22' 11"
Total Internal Area	51 sq m	549 sq ft
Total Internal & External Area	64.8 sq m	698 sq ft

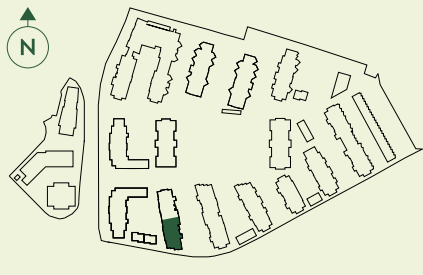
Apartments: 102, 205



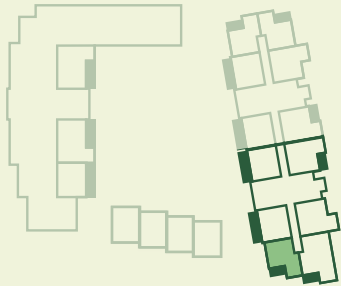
Apartment: 108



SITE PLAN



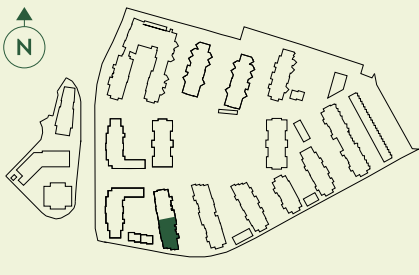
APARTMENT LOCATION



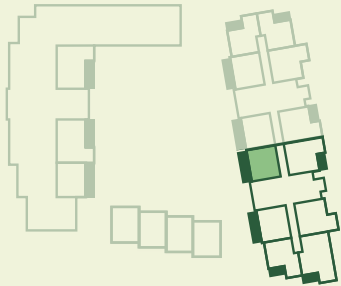
LEVEL/PLOT

2	205
1	102

SITE PLAN



APARTMENT LOCATION



LEVEL/PLOT

1	108
---	-----

► Entrance **C**-Cupboard **HIU**-Heat Interface Unit **MVHR**-Mechanical Ventilation with Heat Recovery Utility
W-Wardrobe **WM**-Washing Machine **DW**-Dishwasher **FF**-Fridge Freezer

► Entrance **C**-Cupboard **HIU**-Heat Interface Unit **MVHR**-Mechanical Ventilation with Heat Recovery Utility
W-Wardrobe **WM**-Washing Machine **DW**-Dishwasher **FF**-Fridge Freezer

1 BED

BURRELL HOUSE

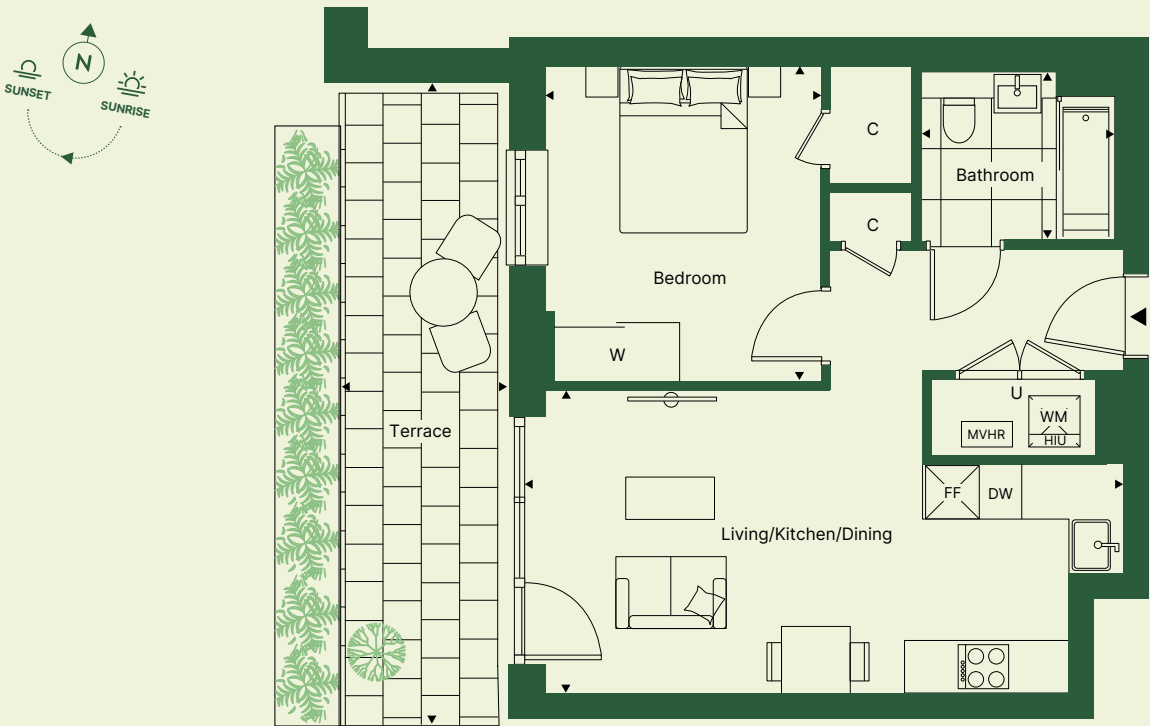
Living/Kitchen/Dining	7.07m x 3.61m	23' 2" x 11' 10"
Bedroom	3.26m x 3.75m	10' 8" x 12' 3"
Bathroom	1.98m x 2.28m	6' 5" x 7' 6"
Terrace	1.99m x 7.10m	6' 6" x 23' 3"
Total Internal Area	50.7 sq m	546 sq ft
Total Internal & External Area	64.8 sq m	697 sq ft

1 BED

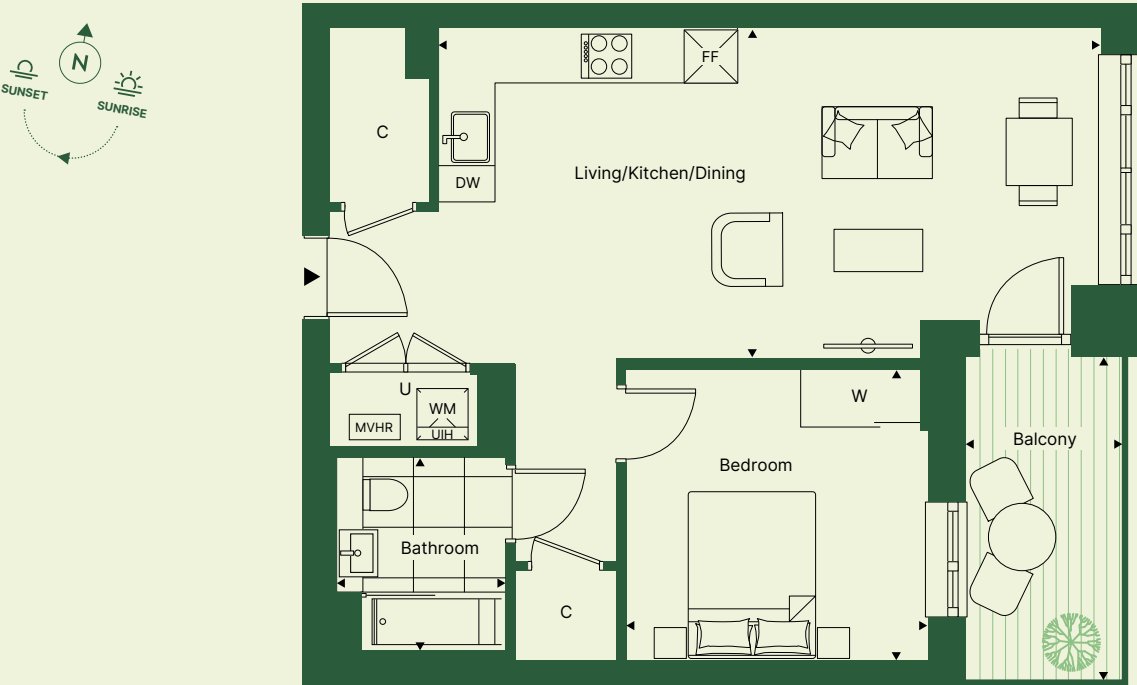
BURRELL HOUSE

Living/Kitchen/Dining	7.82m x 3.95m	25' 7" x 12' 11"
Bedroom	3.59m x 3.40m	11' 9" x 11' 2"
Bathroom	1.98m x 2.28m	6' 5" x 7' 6"
Balcony	1.68m x 3.70m	5' 6" x 12' 2"
Total Internal Area	60 sq m	646 sq ft
Total Internal & External Area	66.2 sq m	712 sq ft

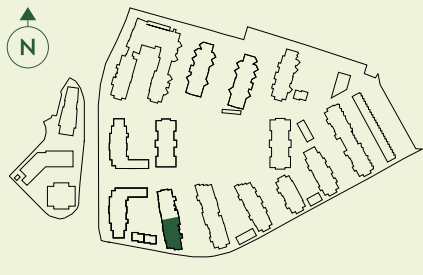
Apartment: 103



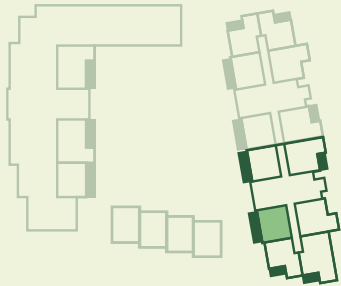
Apartment: 109



SITE PLAN



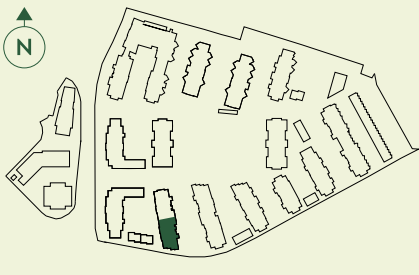
APARTMENT LOCATION



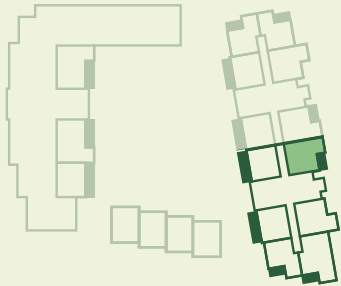
LEVEL/PLOT

1 103

SITE PLAN



APARTMENT LOCATION



LEVEL/PLOT

1 109

► Entrance C-Cupboard HIU-Heat Interface Unit MVHR-Mechanical Ventilation with Heat Recovery Utility
W-Wardrobe WM-Washing Machine DW-Dishwasher FF-Fridge Freezer

► Entrance C-Cupboard HIU-Heat Interface Unit MVHR-Mechanical Ventilation with Heat Recovery Utility
W-Wardrobe WM-Washing Machine DW-Dishwasher FF-Fridge Freezer

2 BED BURRELL HOUSE

Living/Kitchen/Dining	7.21m x 3.45m	23' 8" x 11' 4"
Main Bedroom	3.49m x 3.52m	11' 5" x 11' 6"
Bedroom 2	3.17m x 3.72m	10' 5" x 12' 2"
En-Suite Bathroom	1.68m x 2.28m	5' 6" x 7' 6"
Shower Room	1.98m x 2.28m	6' 5" x 7' 6"
Balcony	1.68m x 3.71m	5' 6" x 12' 2"
Total Internal Area	71.8 sq m	773 sq ft
Total Internal & External Area	78 sq m	839 sq ft

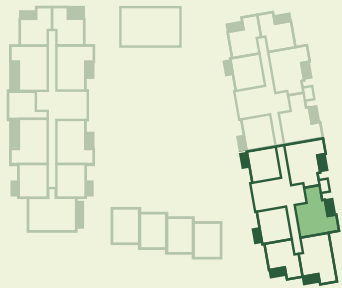
Apartments: 203, 303, 403, 503



SITE PLAN



APARTMENT LOCATION



LEVEL/PLOT

5	503
4	403
3	303
2	203

► Entrance **C**-Cupboard **HIU**-Heat Interface Unit **MVHR**-Mechanical Ventilation with Heat Recovery Utility
W-Wardrobe **WM**-Washing Machine **DW**-Dishwasher **FF**-Fridge Freezer

2 BED BURRELL HOUSE

Living/Kitchen/Dining	7.47m x 4.38m	24' 6" x 14' 4"
Main Bedroom	3.77m x 3.49m	12' 4" x 11' 5"
Bedroom 2	3.77m x 3.44m	12' 4" x 11' 3"
En-Suite Bathroom	1.68m x 2.28m	5' 6" x 7' 6"
Shower Room	1.98m x 2.28m	6' 5" x 7' 6"
Balcony	3.67m x 1.68m	12' 0" x 5' 6"
Total Internal Area	73.2 sq m	788 sq ft
Total Internal & External Area	79.3 sq	853 sq ft

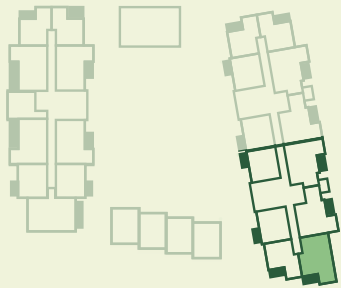
Apartments: 101, 204, 304, 404



SITE PLAN



APARTMENT LOCATION



LEVEL/PLOT

4	404
3	304
2	204
1	101

► Entrance **C**-Cupboard **HIU**-Heat Interface Unit **MVHR**-Mechanical Ventilation with Heat Recovery Utility
W-Wardrobe **WM**-Washing Machine **DW**-Dishwasher **FF**-Fridge Freezer

2 BED

BURRELL HOUSE

Living/Kitchen/Dining	7.21m x 4.00m	24' 6" x 14' 4"
Main Bedroom	6.43m x 3.01m	12' 4" x 11' 5"
Bedroom 2	3.38m x 3.40m	12' 4" x 11' 3"
En-Suite Bathroom	1.68m x 2.28m	5' 6" x 7' 6"
Shower Room	1.98m x 2.28m	6' 5" x 7' 6"
Balcony	1.68m x 3.71m	5' 6" x 12' 2"
Total Internal Area	76.9 sq m	828 sq ft
Total Internal & External Area	83.1 sq m	894 sq ft

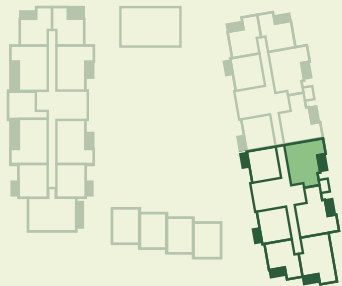
Apartment: 202 



SITE PLAN



APARTMENT LOCATION



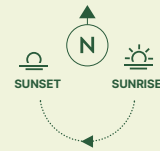
LEVEL/PLOT

2 202

HOPPER HOUSE



► Entrance C-Cupboard HIU-Heat Interface Unit MVHR-Mechanical Ventilation with Heat Recovery Utility
W-Wardrobe WM-Washing Machine DW-Dishwasher FF-Fridge Freezer

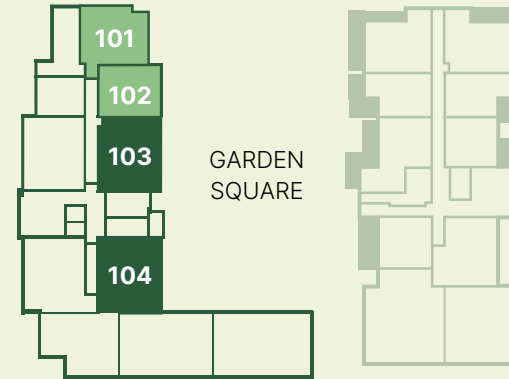


1 BED HOPPER HOUSE

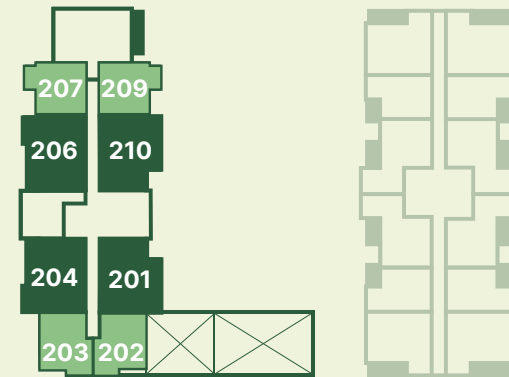
Living/Kitchen/Dining	6.95m x 3.60m	22' 9" x 11' 9"
Bedroom	3.18m x 3.75m	10' 5" x 12' 3"
Bathroom	1.98m x 2.28m	6' 5" x 7' 6"
Balcony	1.53m x 3.63m	5' 0" x 11' 11"

Total Internal Area	50.7 sq m	546 sq ft
Total Internal & External Area	56.2 sq m	605 sq ft

FIRST FLOOR



SECOND FLOOR



THIRD FLOOR



FOURTH FLOOR



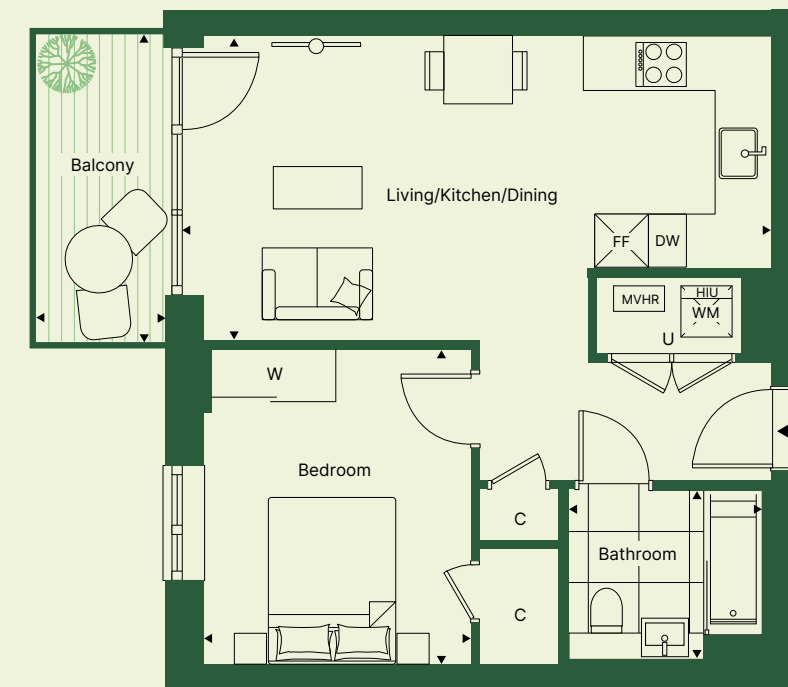
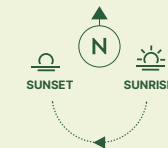
EIGHTH FLOOR



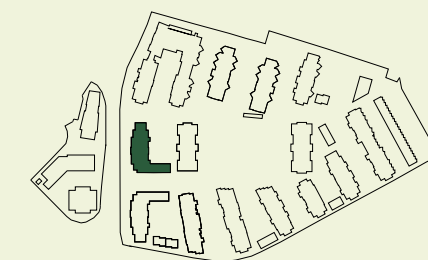
1 BED APARTMENT

2 BED APARTMENT

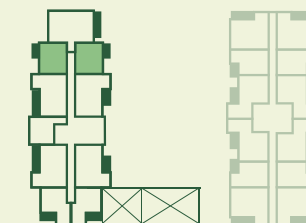
Apartments: 207, 209*, 307, 309*



SITE PLAN



APARTMENT LOCATION



LEVEL/PLOT

3	307, 309*
2	207, 209*

*Handed to floorplan shown ► Entrance C-Cupboard HIU-Heat Interface Unit MVHR-Mechanical Ventilation with Heat Recovery Utility
W-Wardrobe WM-Washing Machine DW-Dishwasher FF-Fridge Freezer

1 BED HOPPER HOUSE

Living/Kitchen/Dining	3.72m x 6.10m	12' 2" x 20' 0"
Bedroom	3.43m x 3.27m	11' 3" x 10' 9"
Bathroom	1.98m x 2.28m	6' 5" x 7' 6"
Balcony	3.67m x 1.68m	12'0" x 5' 6"
Total Internal Area	50.5 sq m	544 sq ft
Total Internal & External Area	56.6 sq m	609 sq ft

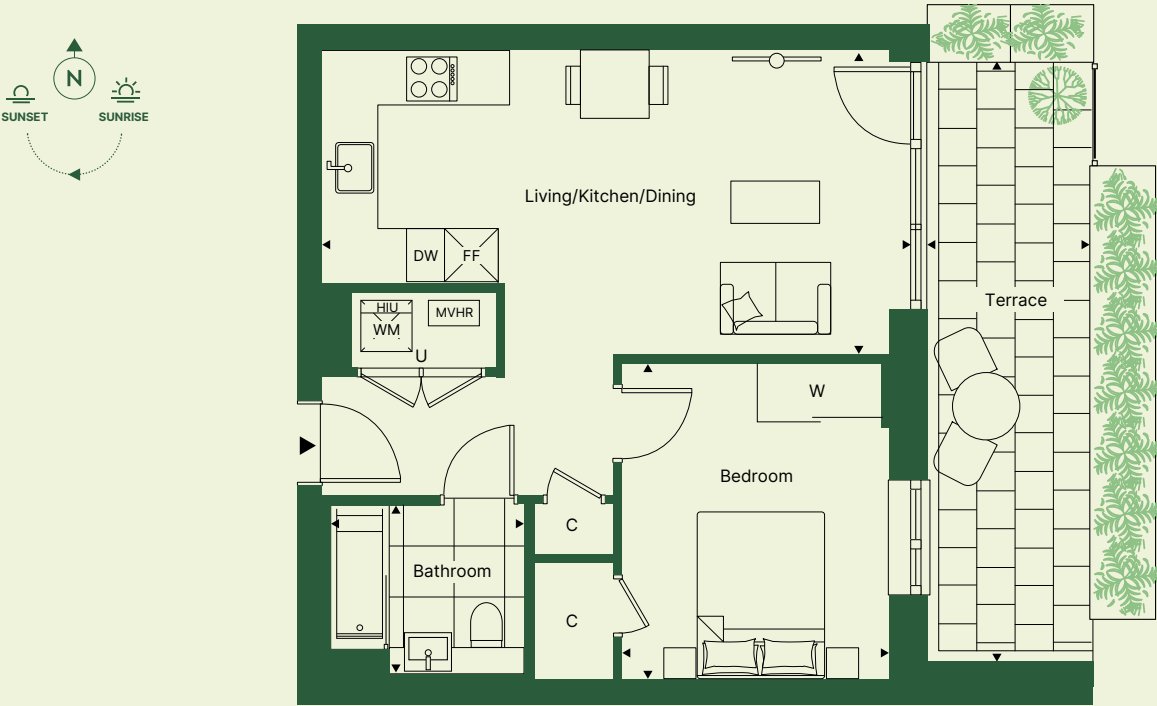
1 BED HOPPER HOUSE

Living/Kitchen/Dining	6.95m x 3.60m	22' 9" x 11' 9"
Bedroom	3.18m x 3.75m	10' 5" x 12' 3"
Bathroom	1.98m x 2.28m	6' 5" x 7' 6"
Terrace	1.91m x 7.12m	6' 3" x 23' 4"
Total Internal Area	50.6 sq m	545 sq ft
Total Internal & External Area	56.1 sq m	604 sq ft

Apartments: 202, 203*



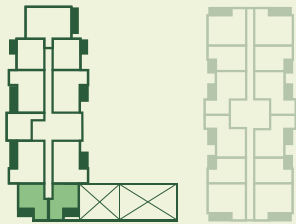
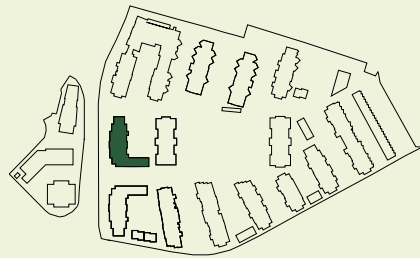
Apartment: 102



SITE PLAN

APARTMENT LOCATION

LEVEL/PLOT

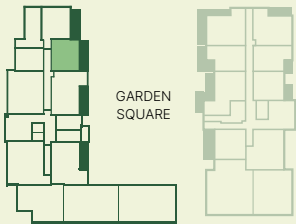


2 202, 203*

SITE PLAN

APARTMENT LOCATION

LEVEL/PLOT



1 102

*Handed to floorplan shown ▶ Entrance C-Cupboard HIU-Heat Interface Unit MVHR-Mechanical Ventilation with Heat Recovery Utility W-Wardrobe WM-Washing Machine DW-Dishwasher FF-Fridge Freezer

▶ Entrance C-Cupboard HIU-Heat Interface Unit MVHR-Mechanical Ventilation with Heat Recovery Utility W-Wardrobe WM-Washing Machine DW-Dishwasher FF-Fridge Freezer

1 BED

HOPPER HOUSE

Living/Kitchen/Dining	3.35m x 7.68m	11' 0" x 25' 2"
Bedroom	3.48m x 3.63m	11' 5" x 11' 11"
Bathroom	1.68m x 2.28m	5' 6" x 7' 6"
Balcony	2.30m x 6.88m	7' 6" x 22' 7"
Total Internal Area	54.9 sq m	591 sq ft
Total Internal & External Area	70.7sq m	760 sq ft

2 BED

HOPPER HOUSE

Living/Kitchen/Dining	8.62m x 3.34m	28' 3" x 10' 11"
Main Bedroom	4.10m x 2.75m	13' 5" x 9' 0"
Bedroom 2	2.80m x 4.04m	9' 2" x 13' 3"
En-Suite Bathroom	1.68m x 2.28m	5' 6" x 7' 6"
Shower Room	1.98m x 2.28m	6' 5" x 7' 6"
Balcony	1.83m x 3.81m	6' 0" x 12' 6"
Total Internal Area	73.9 sq m	795 sq ft
Total Internal & External Area	86.4 sq m	929 sq ft

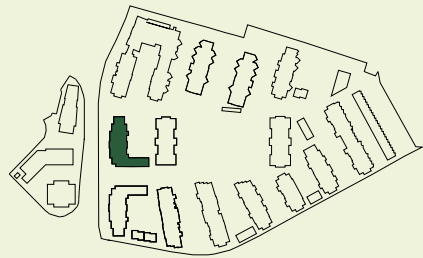
Apartment: 101



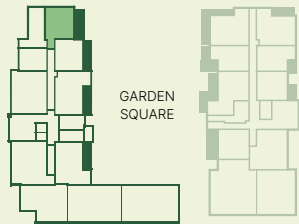
Apartments: 210, 310, 410 



SITE PLAN



APARTMENT LOCATION



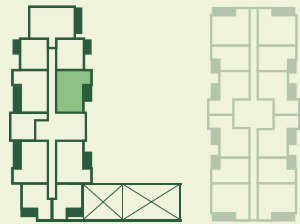
LEVEL/PLOT

1 101

SITE PLAN



APARTMENT LOCATION



LEVEL/PLOT

4 410

3 310

2 210

► Entrance C-Cupboard HIU-Heat Interface Unit MVHR-Mechanical Ventilation with Heat Recovery Utility
W-Wardrobe WM-Washing Machine DW-Dishwasher FF-Fridge Freezer

► Entrance C-Cupboard HIU-Heat Interface Unit MVHR-Mechanical Ventilation with Heat Recovery Utility
W-Wardrobe WM-Washing Machine DW-Dishwasher FF-Fridge Freezer

2 BED HOPPER HOUSE

Living/Kitchen/Dining	7.29m x 3.34m	23' 11" x 10' 11"
Main Bedroom	4.10m x 2.75m	13' 5" x 9' 0"
Bedroom 2	2.80m x 4.04m	9' 2" x 13' 3"
En-Suite Bathroom	1.68m x 2.28m	5' 6" x 7' 6"
Shower Room	1.98m x 2.28m	6' 5" x 7' 6"
Balcony	1.53m x 10.06m	5' 0" x 33' 0"
Total Internal Area	69.1 sq m	744 sq ft
Total Internal & External Area	82.7 sq m	890 sq ft

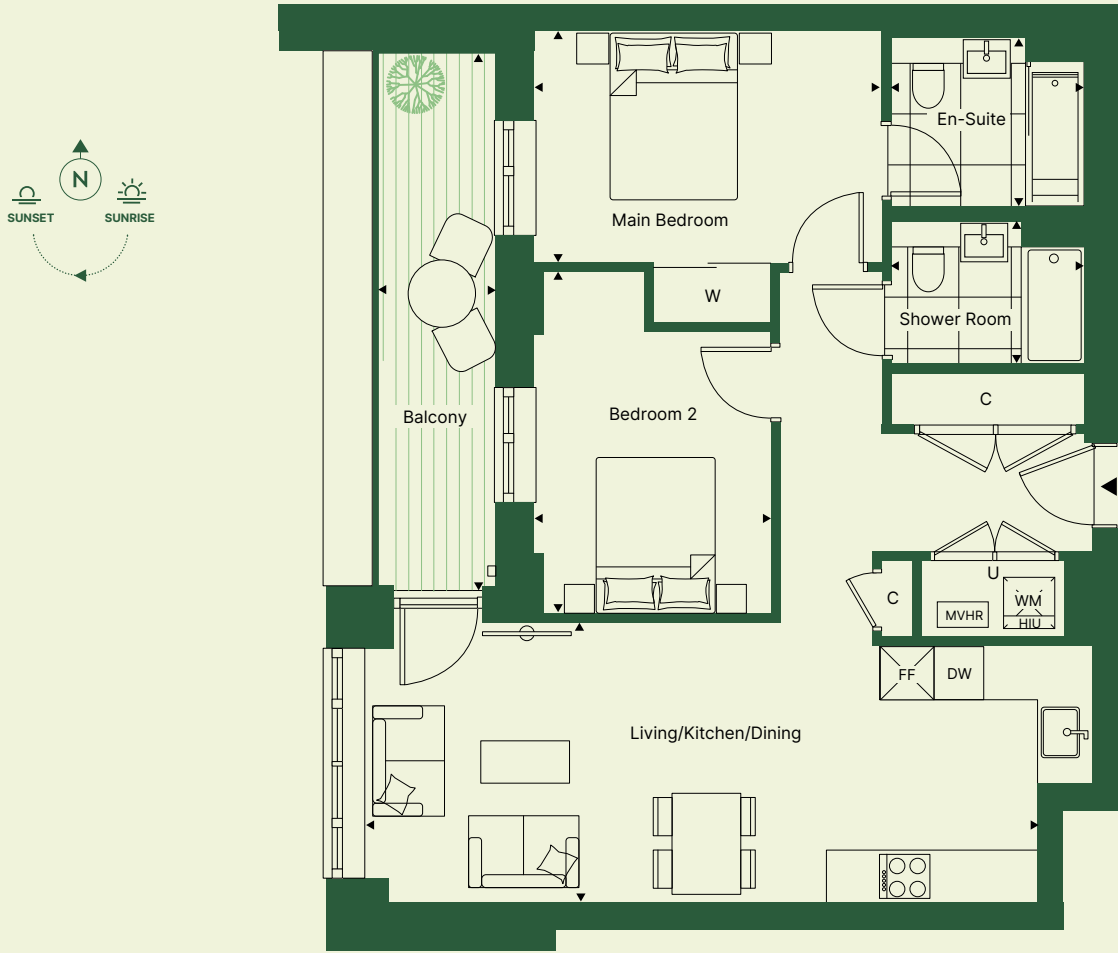
2 BED HOPPER HOUSE

Living/Kitchen/Dining	8.63m x 3.34m	28' 3" x 10' 11"
Main Bedroom	4.10m x 2.75m	13' 5" x 9' 0"
Bedroom 2	2.80m x 4.04m	9' 2" x 13' 3"
En-Suite Bathroom	1.68m x 2.28m	5' 6" x 7' 6"
Shower Room	1.98m x 2.28m	6' 5" x 7' 6"
Balcony	1.42m x 6.32m	4' 8" x 20' 9"
Total Internal Area	73.9 sq m	795 sq ft
Total Internal & External Area	82.8 sq m	890 sq ft

Apartment: 810



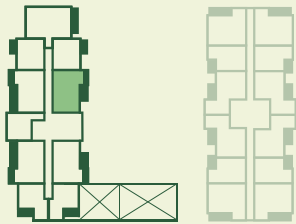
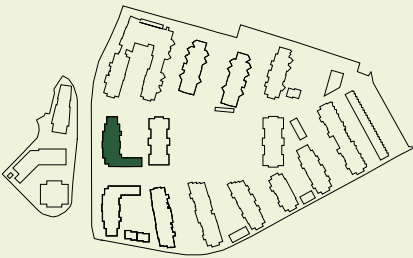
Apartments: 204, 304, 404



SITE PLAN

APARTMENT LOCATION

LEVEL/PLOT

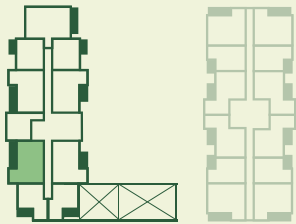
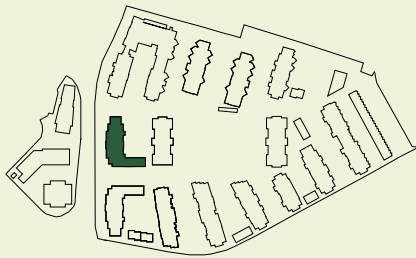


8 810

SITE PLAN

APARTMENT LOCATION

LEVEL/PLOT



4 404

3 304

2 204

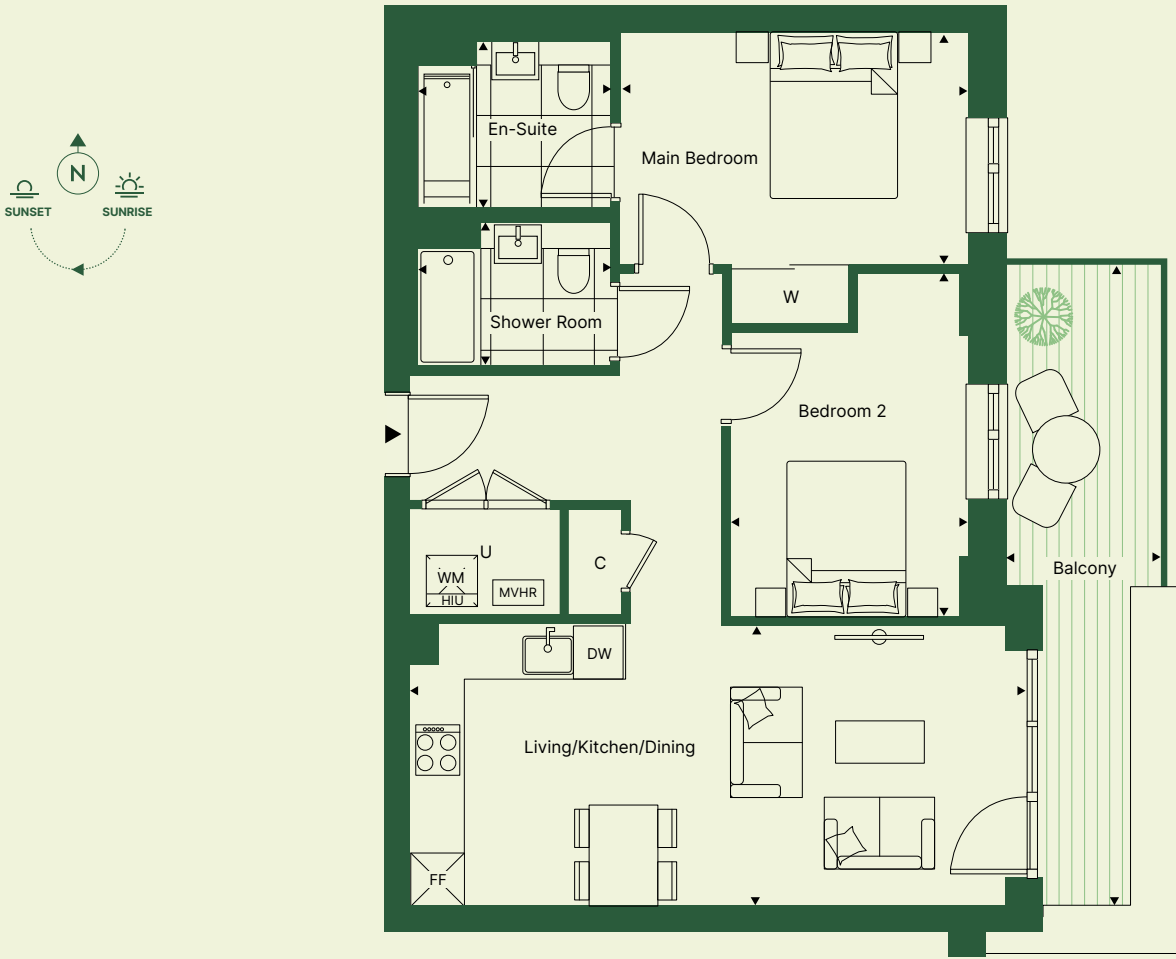
► Entrance C-Cupboard HIU-Heat Interface Unit MVHR-Mechanical Ventilation with Heat Recovery Utility
W-Wardrobe WM-Washing Machine DW-Dishwasher FF-Fridge Freezer

► Entrance C-Cupboard HIU-Heat Interface Unit MVHR-Mechanical Ventilation with Heat Recovery Utility
W-Wardrobe WM-Washing Machine DW-Dishwasher FF-Fridge Freezer

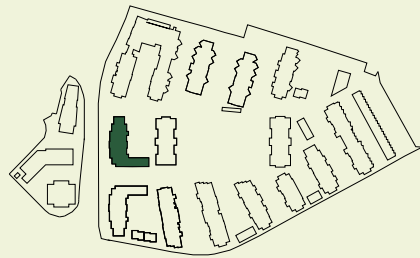
2 BED HOPPER HOUSE

Living/Kitchen/Dining	7.29m x 3.34m	23' 11" x 10' 11"
Main Bedroom	4.10m x 2.75m	13' 5" x 9' 0"
Bedroom 2	2.80m x 4.04m	9' 2" x 13' 3"
En-Suite Bathroom	1.68m x 2.28m	5' 6" x 7' 6"
Shower Room	1.98m x 2.28m	6' 5" x 7' 6"
Balcony	1.82m x 7.44m	6' 0" x 24' 5"
Total Internal Area	70 sq m	753 sq ft
Total Internal & External Area	83.5 sq m	899 sq ft

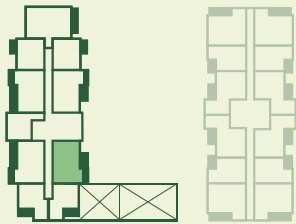
Apartment: 801



SITE PLAN



APARTMENT LOCATION



LEVEL/PLOT

8 801

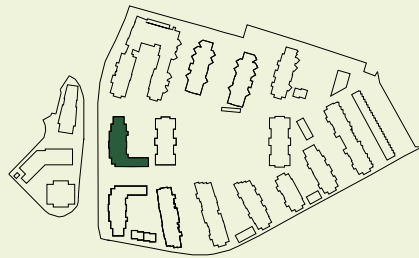
2 BED HOPPER HOUSE

Living/Kitchen/Dining	8.63m x 3.34m	28' 3" x 10' 11"
Main Bedroom	4.10m x 2.75m	13' 5" x 9' 0"
Bedroom 2	2.80m x 4.04m	9' 2" x 13' 3"
En-Suite Bathroom	1.68m x 2.28m	5' 6" x 7' 6"
Shower Room	1.98m x 2.28m	6' 5" x 7' 6"
Balcony	1.42m x 6.32m	4' 8" x 20' 9"
Total Internal Area	74.9 sq m	806 sq ft
Total Internal & External Area	83.8 sq m	901 sq ft

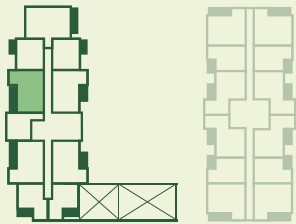
Apartments: 206, 306, 406



SITE PLAN



APARTMENT LOCATION



LEVEL/PLOT

4 406
3 306
2 206

► Entrance C-Cupboard HIU-Heat Interface Unit MVHR-Mechanical Ventilation with Heat Recovery Utility
W-Wardrobe WM-Washing Machine DW-Dishwasher FF-Fridge Freezer

► Entrance C-Cupboard HIU-Heat Interface Unit MVHR-Mechanical Ventilation with Heat Recovery Utility
W-Wardrobe WM-Washing Machine DW-Dishwasher FF-Fridge Freezer

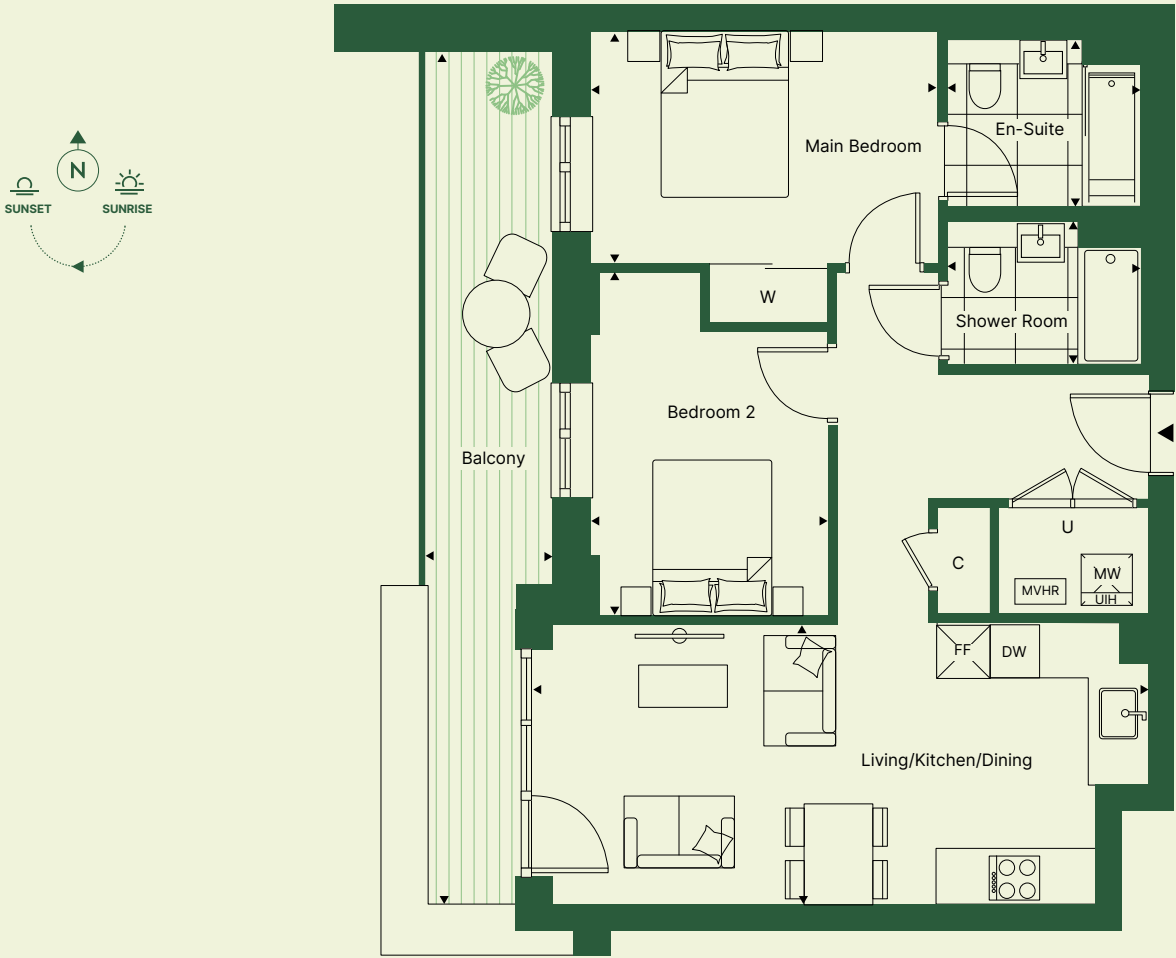
2 BED HOPPER HOUSE

Living/Kitchen/Dining	7.29m x 3.34m	23' 11" x 10' 11"
Main Bedroom	4.10m x 2.75m	13' 5" x 9' 0"
Bedroom 2	2.80m x 4.04m	9' 2" x 13' 3"
En-Suite Bathroom	1.68m x 2.28m	5' 6" x 7' 6"
Shower Room	1.98m x 2.28m	6' 5" x 7' 6"
Balcony	1.53m x 10.06m	5' 0" x 33' 0"
Total Internal Area	69.1 sq m	744 sq ft
Total Internal & External Area	84.5 sq m	909 sq ft

2 BED HOPPER HOUSE

Living/Kitchen/Dining	7.29m x 3.34m	23' 11" x 10' 11"
Main Bedroom	4.10m x 2.75m	13' 5" x 9' 0"
Bedroom 2	2.80m x 4.04m	9' 2" x 13' 3"
En-Suite Bathroom	1.98m x 2.28m	6' 5" x 7' 6"
Shower Room	1.68m x 2.28m	5' 6" x 7' 6"
Balcony	1.53m x 10.06m	5' 0" x 33' 0"
Total Internal Area	70 sq m	753 sq ft
Total Internal & External Area	85.3 sq m	917 sq ft

Apartment: 804



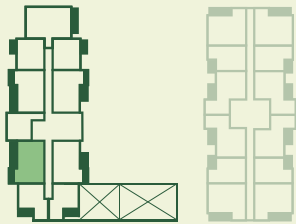
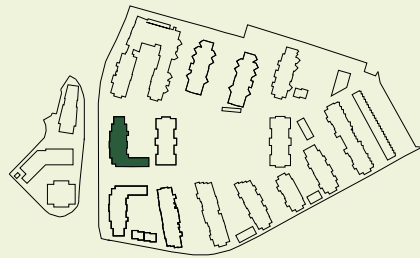
Apartment: 806



SITE PLAN

APARTMENT LOCATION

LEVEL/PLOT

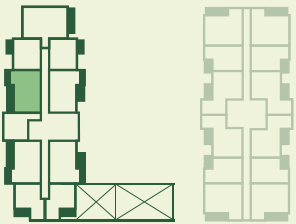


8 804

SITE PLAN

APARTMENT LOCATION

LEVEL/PLOT



8 806

► Entrance C-Cupboard HIU-Heat Interface Unit MVHR-Mechanical Ventilation with Heat Recovery Utility
W-Wardrobe WM-Washing Machine DW-Dishwasher FF-Fridge Freezer


► Entrance C-Cupboard HIU-Heat Interface Unit MVHR-Mechanical Ventilation with Heat Recovery Utility
W-Wardrobe WM-Washing Machine DW-Dishwasher FF-Fridge Freezer

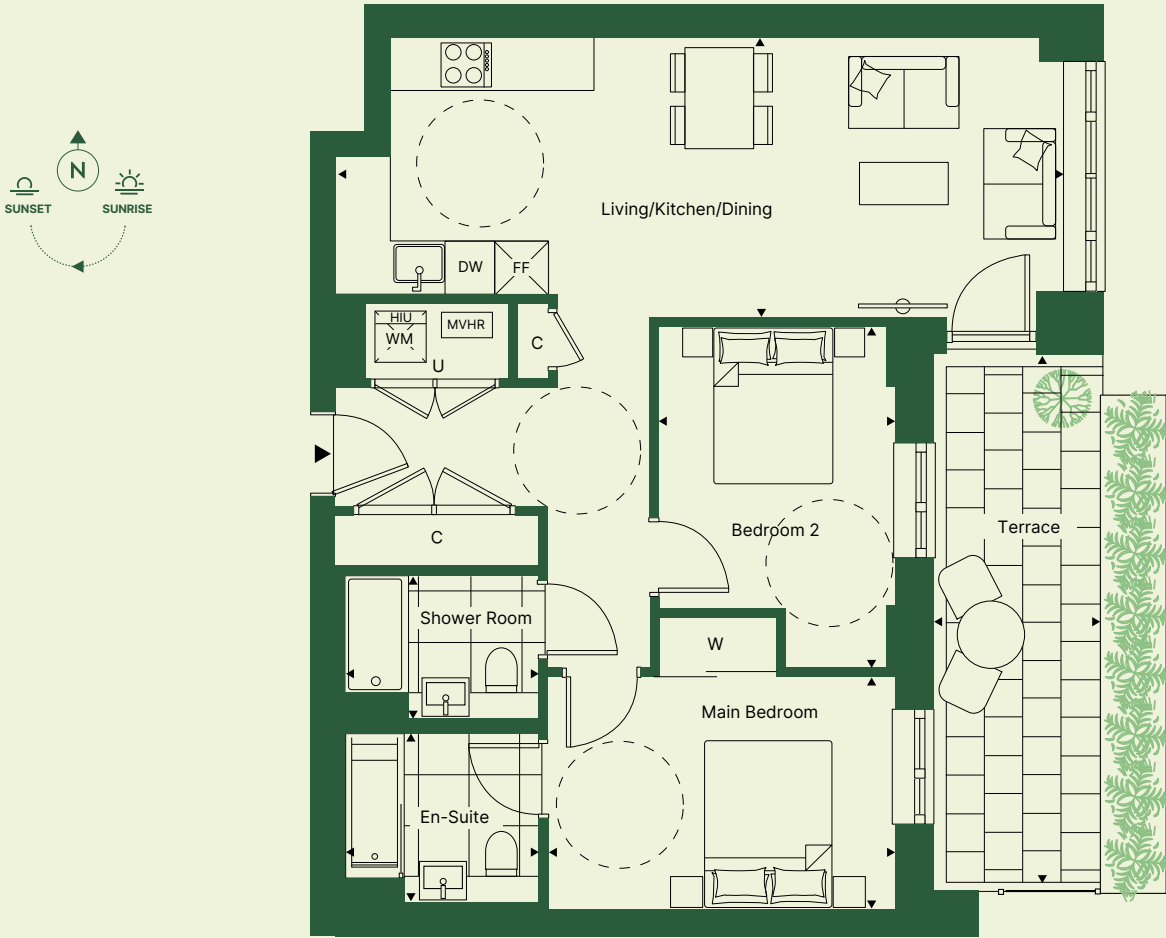
2 BED HOPPER HOUSE

Living/Kitchen/Dining	8.62m x 3.34m	28' 3" x 10' 11"
Main Bedroom	4.10m x 2.75m	13' 5" x 9' 0"
Bedroom 2	2.80m x 4.04m	9' 2" x 13' 3"
En-Suite Bathroom	1.68m x 2.28m	5' 6" x 7' 6"
Shower Room	1.98m x 2.28m	6' 5" x 7' 6"
Terrace	2.02m x 6.19m	6' 7" x 20' 4"
Total Internal Area	93.9 sq m	795 sq ft
Total Internal & External Area	86.4 sq m	929 sq ft

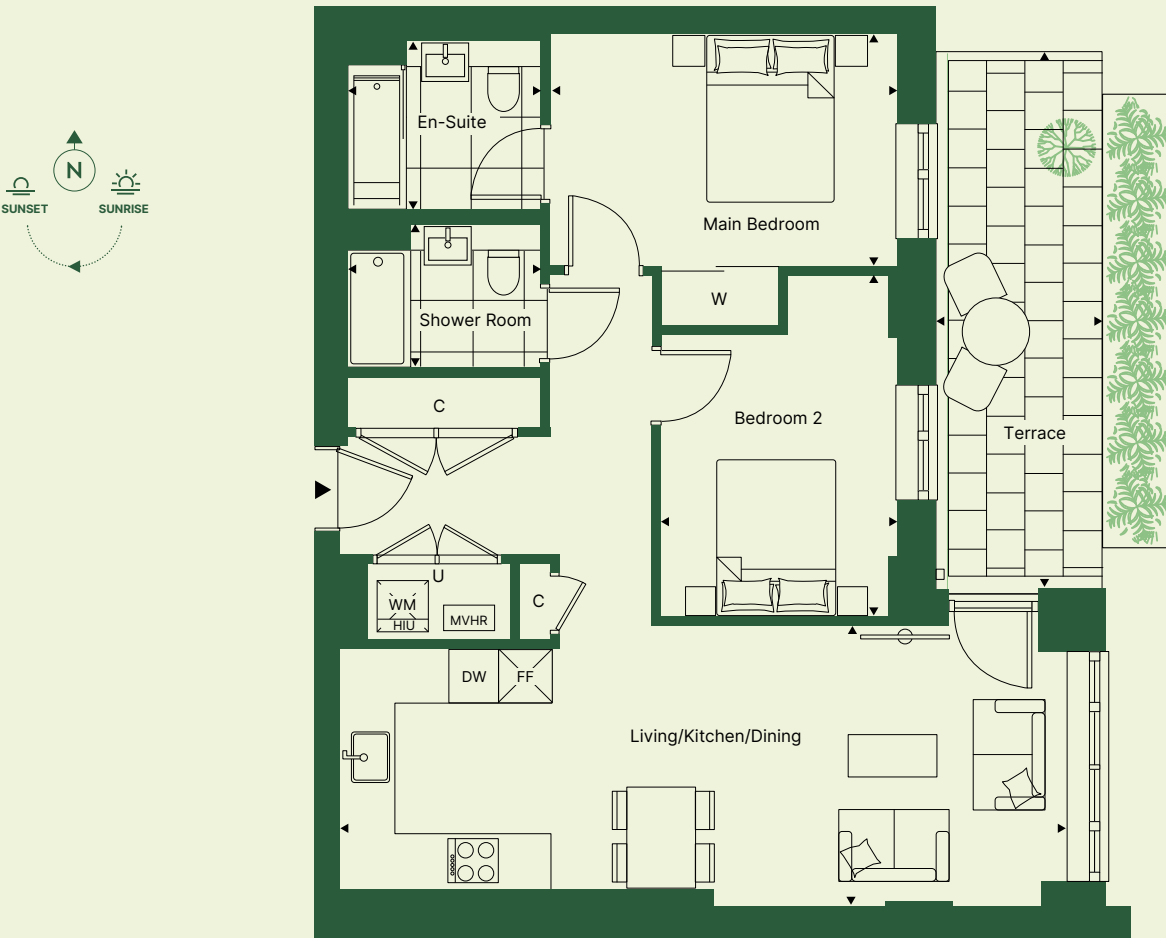
2 BED HOPPER HOUSE

Living/Kitchen/Dining	8.62m x 3.34m	28' 3" x 10' 11"
Main Bedroom	4.10m x 2.75m	13' 5" x 9' 0"
Bedroom 2	2.80m x 4.04m	9' 2" x 13' 3"
En-Suite Bathroom	1.68m x 2.28m	5' 6" x 7' 6"
Shower Room	1.98m x 2.28m	6' 5" x 7' 6"
Terrace	2.01m x 5.63m	6' 7" x 18' 5"
Total Internal Area	74.9 sq m	806 sq ft
Total Internal & External Area	86.2 sq m	928 sq ft

Apartment: 103 



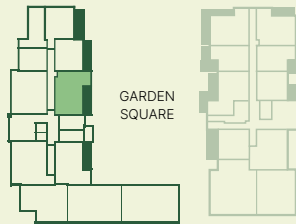
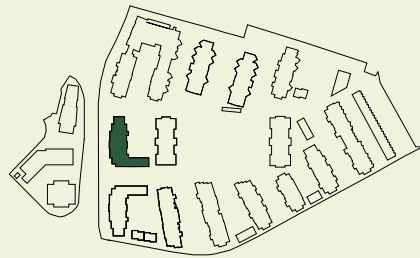
Apartment: 104



SITE PLAN

APARTMENT LOCATION

LEVEL/PLOT

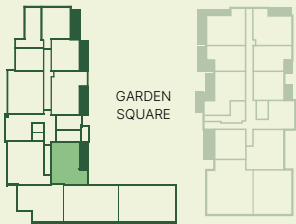


1 103

SITE PLAN

APARTMENT LOCATION

LEVEL/PLOT



1 104

► Entrance C-Cupboard HIU-Heat Interface Unit MVHR-Mechanical Ventilation with Heat Recovery Utility
W-Wardrobe WM-Washing Machine DW-Dishwasher FF-Fridge Freezer

► Entrance C-Cupboard HIU-Heat Interface Unit MVHR-Mechanical Ventilation with Heat Recovery Utility
W-Wardrobe WM-Washing Machine DW-Dishwasher FF-Fridge Freezer

2 BED HOPPER HOUSE

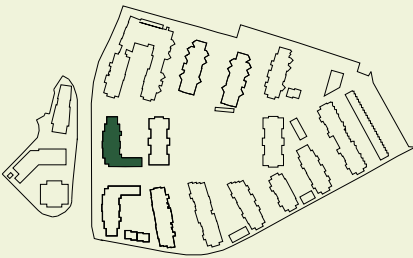
Living/Kitchen/Dining	8.62m x 3.34m	28' 3" x 10' 11"
Main Bedroom	4.10m x 2.75m	13' 5" x 9' 0"
Bedroom 2	2.80m x 4.04m	9' 2" x 13' 3"
En-Suite Bathroom	1.68m x 2.28m	5' 6" x 7' 6"
Shower Room	1.98m x 2.28m	6' 5" x 7' 6"
Balcony	1.83m x 3.81m	6' 0" x 12' 6"
Total Internal Area	74.9 sq m	806 sq ft
Total Internal & External Area	81.8 sq m	880 sq ft

Apartments: 201, 301, 401

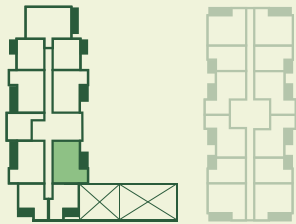


GILLHAM
HOUSE

SITE PLAN



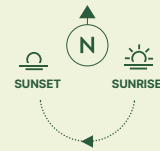
APARTMENT LOCATION



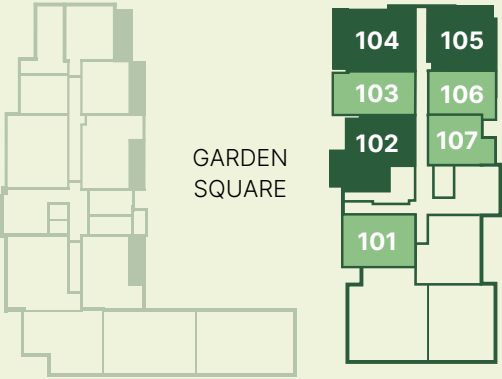
LEVEL/PLOT

4	401
3	301
2	201

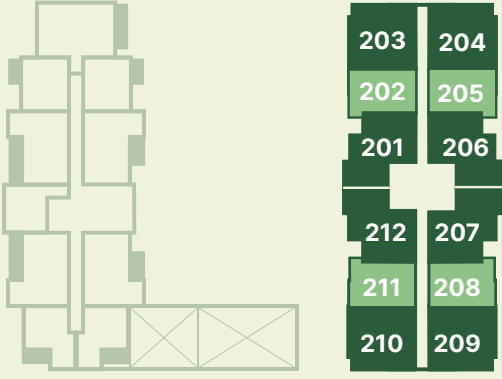
► Entrance C-Cupboard HIU-Heat Interface Unit MVHR-Mechanical Ventilation with Heat Recovery Utility
W-Wardrobe WM-Washing Machine DW-Dishwasher FF-Fridge Freezer



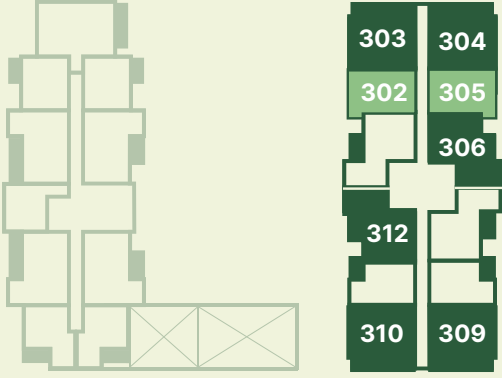
FIRST FLOOR



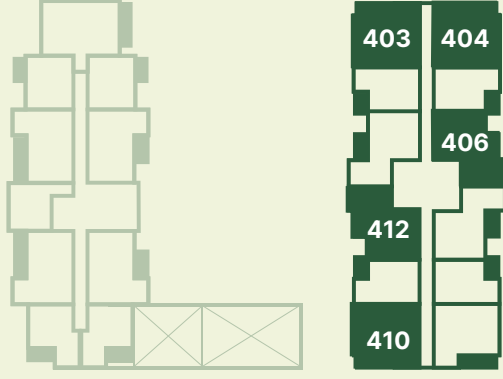
SECOND FLOOR



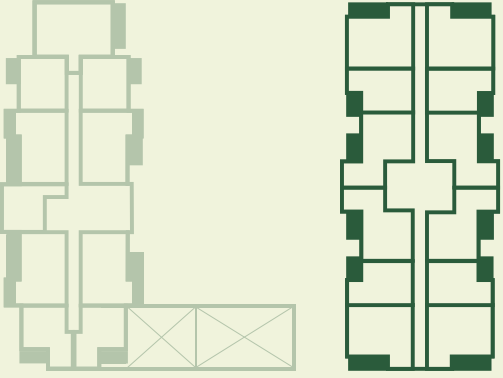
THIRD FLOOR



FOURTH FLOOR



EIGHTH FLOOR



1 BED APARTMENT

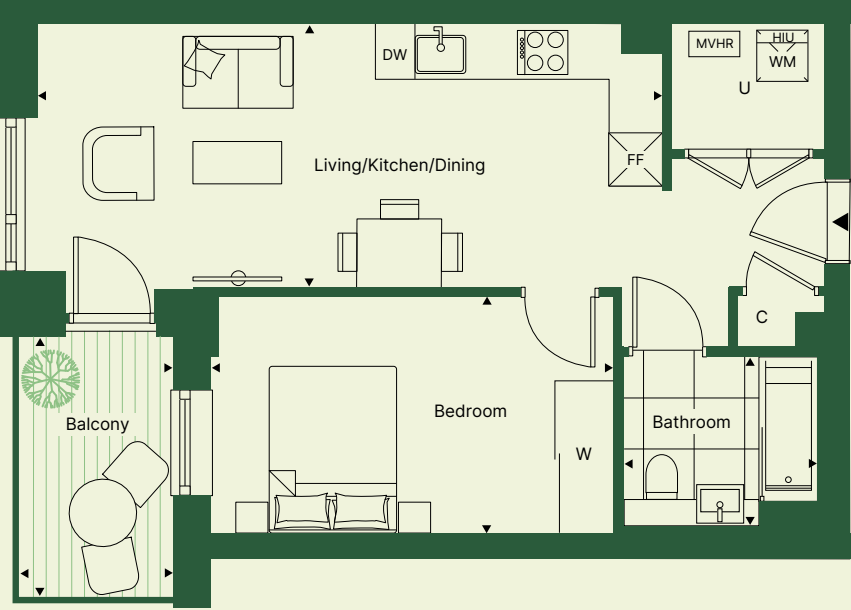
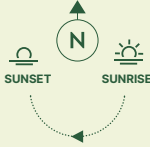
2 BED APARTMENT

1 BED GILHAM HOUSE

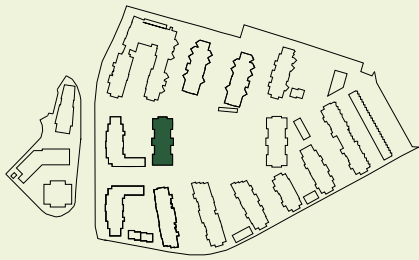
Living/Kitchen/Dining	7.41m x 3.12m	24' 4" x 10' 3"
Bedroom	4.76m x 2.80m	15' 7" x 9' 2"
Bathroom	1.98m x 2.28m	6' 5" x 7' 6"
Balcony	1.80m x 3.08m	5' 10" x 10' 1"

Total Internal Area	51.2 sq m	551 sq ft
Total Internal & External Area	56.7 sq m	610 sq ft

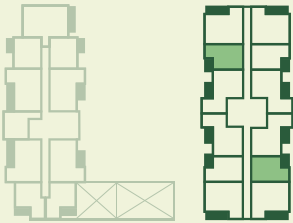
Apartment: 202, 208[†], 302



SITE PLAN



APARTMENT LOCATION



LEVEL/PLOT

3	302
2	202, 208 [†]

[†] Rotated to floorplan shown ► Entrance C-Cupboard HIU-Heat Interface Unit MVHR-Mechanical Ventilation with Heat Recovery Utility
W-Wardrobe WM-Washing Machine DW-Dishwasher FF-Fridge Freezer

1 BED

GILHAM HOUSE

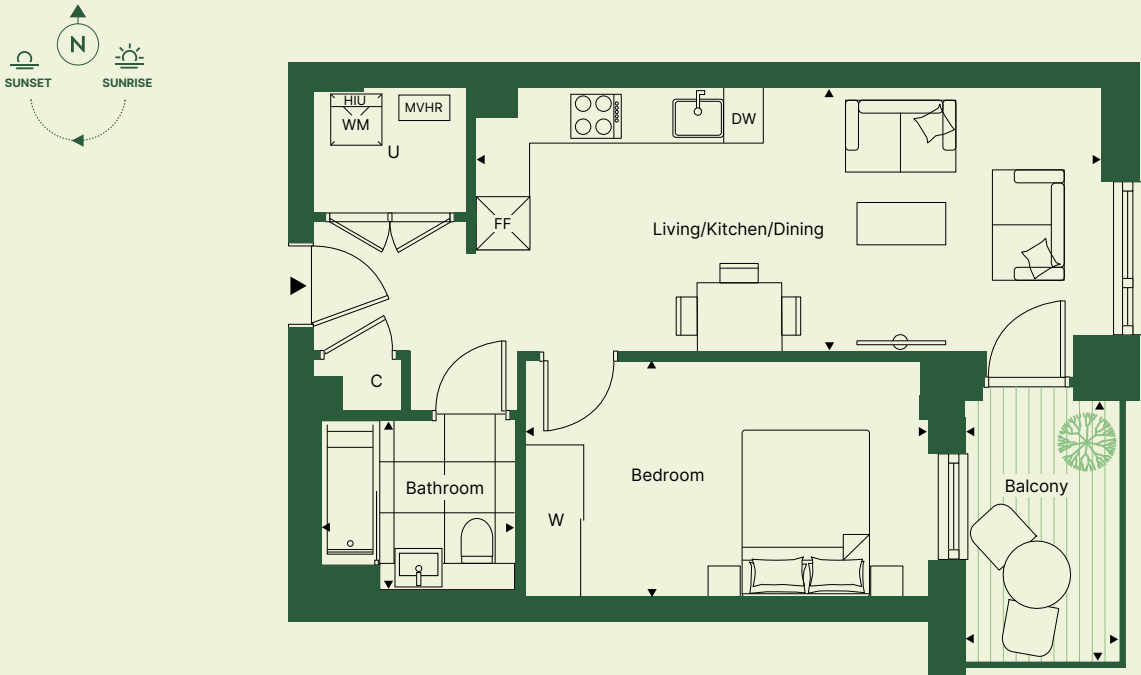
Living/Kitchen/Dining	7.41m x 3.12m	24' 4" x 10' 3"
Bedroom	4.76m x 2.80m	15' 7" x 9' 2"
Bathroom	1.98m x 2.28m	6' 5" x 7' 6"
Balcony	1.83m x 3.08	6' 0" x 10' 1"
Total Internal Area	51.2 sq m	551 sq ft
Total Internal & External Area	56.8 sq m	612 sq ft

1 BED

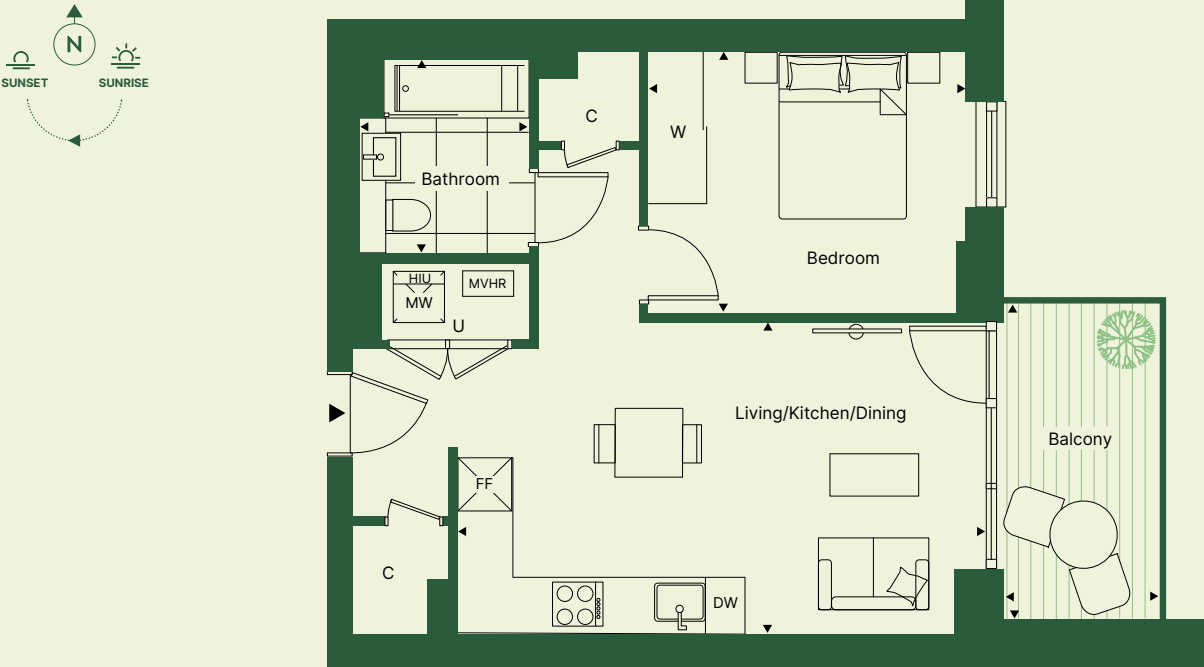
GILHAM HOUSE

Living/Kitchen/Dining	6.25m x 3.69m	20' 6" x 12' 1"
Bedroom	3.76m x 3.08m	12' 4" x 10' 1"
Bathroom	1.68m x 2.28m	5' 6" x 7' 6"
Balcony	1.83m x 3.67m	6' 0" x 12' 0"
Total Internal Area	51 sq m	549 sq ft
Total Internal & External Area	57.7 sq m	621 sq ft

Apartments: 106, 205, 211†, 305



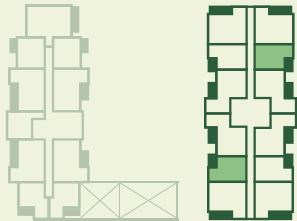
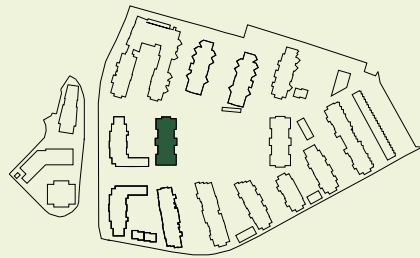
Apartment: 107



SITE PLAN

APARTMENT LOCATION

LEVEL/PLOT

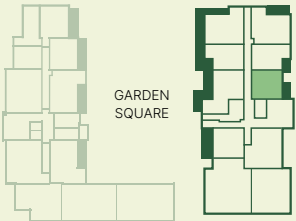
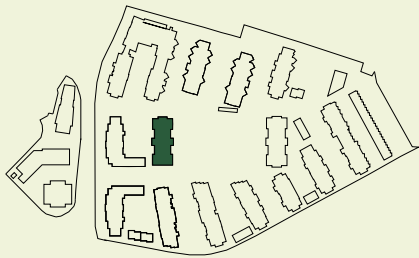


3	305
2	205, 211†
1	106

SITE PLAN

APARTMENT LOCATION

LEVEL/PLOT



1	107
---	-----

† Rotated to floorplan shown ► Entrance C-Cupboard HIU-Heat Interface Unit MVHR-Mechanical Ventilation with Heat Recovery Utility W-Wardrobe WM-Washing Machine DW-Dishwasher FF-Fridge Freezer

► Entrance C-Cupboard HIU-Heat Interface Unit MVHR-Mechanical Ventilation with Heat Recovery Utility W-Wardrobe WM-Washing Machine DW-Dishwasher FF-Fridge Freezer

1 BED

GILHAM HOUSE

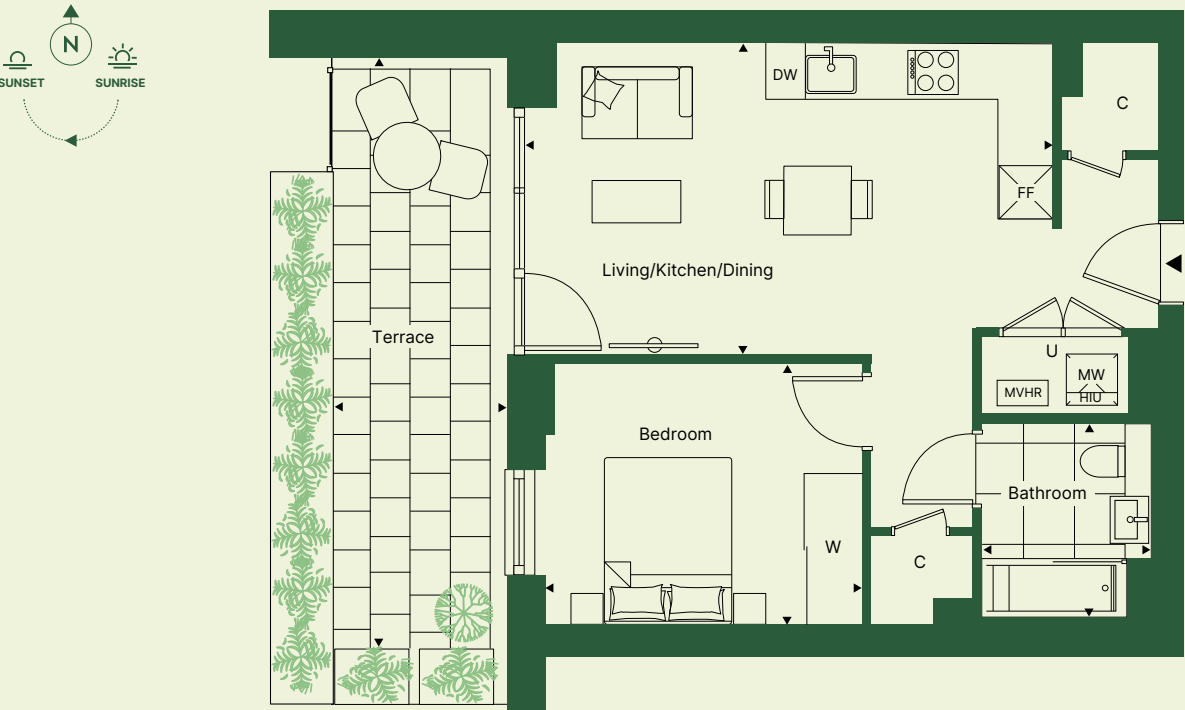
Living/Kitchen/Dining	6.25m x 3.69m	20' 6" x 12' 1"
Bedroom	3.76m x 3.08m	12' 4" x 10' 1"
Bathroom	1.68m x 2.28m	5' 6" x 7' 6"
Terrace	2.04m x 6.96m	6' 8" x 22' 10"
Total Internal Area	51 sq m	549 sq ft
Total Internal & External Area	65.2 sq m	701 sq ft

1 BED

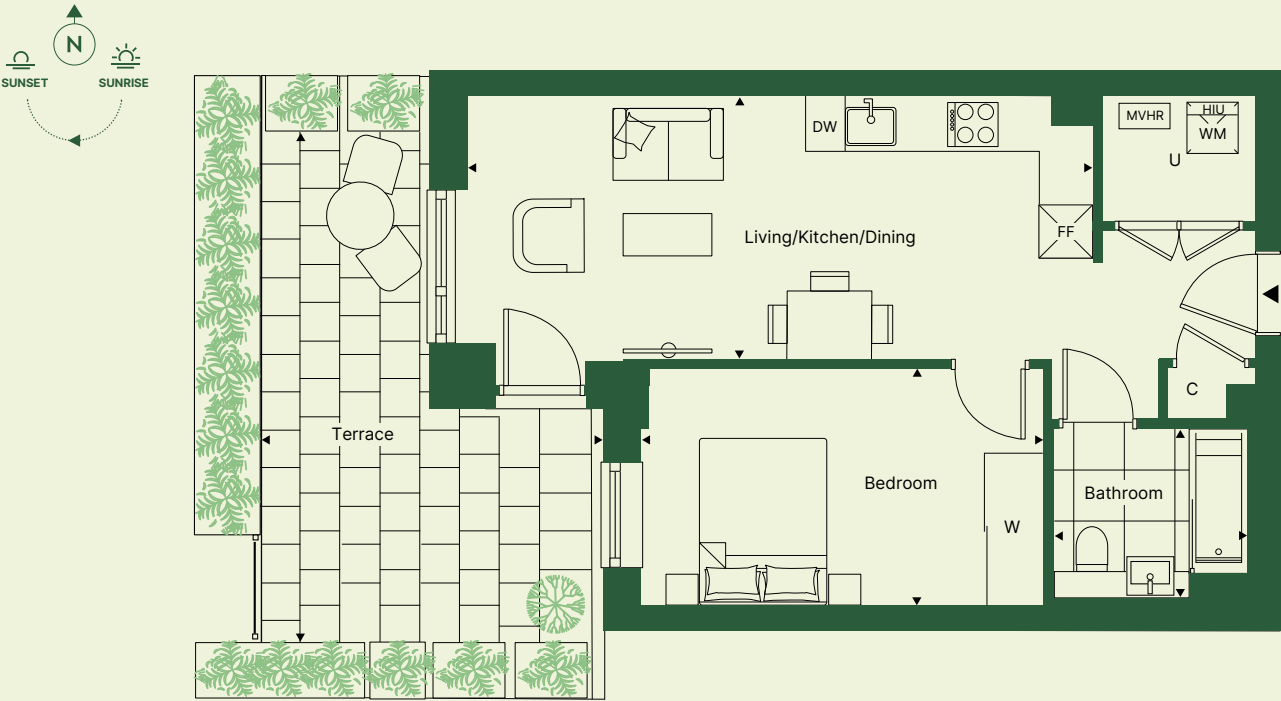
GILHAM HOUSE

Living/Kitchen/Dining	7.41m x 3.12m	24' 4" x 10' 3"
Bedroom	4.76m x 2.80m	15' 7" x 9' 2"
Bathroom	1.98m x 2.28m	6' 5" x 7' 6"
Terrace	4.03m x 5.97m	13' 2" x 19' 7"
Total Internal Area	51.2 sq m	551 sq ft
Total Internal & External Area	68.6 sq m	738 sq ft

Apartment: 101



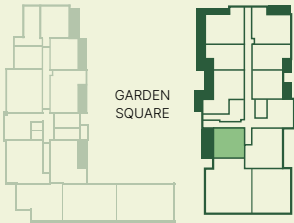
Apartment: 103



SITE PLAN



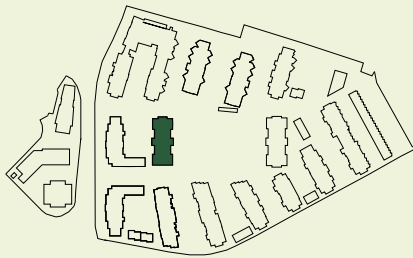
APARTMENT LOCATION



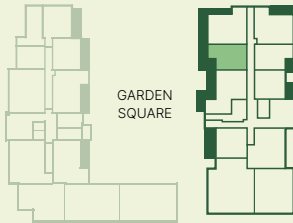
LEVEL/PLOT

1 101

SITE PLAN



APARTMENT LOCATION



LEVEL/PLOT

1 103

► Entrance C-Cupboard HIU-Heat Interface Unit MVHR-Mechanical Ventilation with Heat Recovery Utility
W-Wardrobe WM-Washing Machine DW-Dishwasher FF-Fridge Freezer

► Entrance C-Cupboard HIU-Heat Interface Unit MVHR-Mechanical Ventilation with Heat Recovery Utility
W-Wardrobe WM-Washing Machine DW-Dishwasher FF-Fridge Freezer

2 BED GILHAM HOUSE

Living/Kitchen/Dining	7.50m x 4.04m	24' 7" x 13' 3"
Main Bedroom	4.76m x 2.75m	15' 7" x 9' 0"
Bedroom 2	3.81m x 3.32m	12' 6" x 10' 10"
En-Suite Bathroom	1.68m x 2.28m	5' 6" x 7' 6"
Shower Room	1.98m x 2.28m	6' 5" x 7' 6"
Balcony	1.83m x 3.67m	5' 6" x 12' 2"
Total Internal Area	72.8 sq m	784 sq ft
Total Internal & External Area	79.3 sq m	853 sq ft

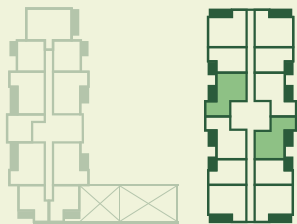
Apartments: 201, 207[†]



SITE PLAN



APARTMENT LOCATION



LEVEL/PLOT

2 201, 207[†]

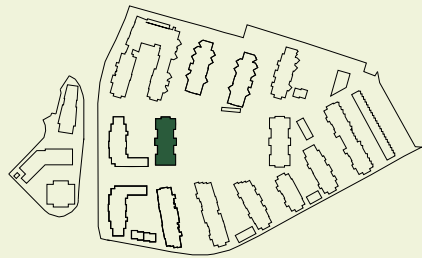
2 BED GILHAM HOUSE

Living/Kitchen/Dining	7.50m x 4.04m	24' 7" x 13' 3"
Main Bedroom	4.76m x 2.75m	15' 7" x 9' 0"
Bedroom 2	3.81m x 3.32m	12' 6" x 10' 10"
En-Suite Bathroom	1.68m x 2.28m	5' 6" x 7' 6"
Shower Room	1.98m x 2.28m	6' 5" x 7' 6"
Balcony	1.83m x 3.67m	6' 0" x 12' 0"
Total Internal Area	72.9 sq m	785 sq ft
Total Internal & External Area	79.6 sq m	857 sq ft

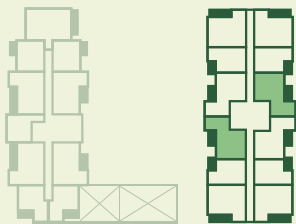
Apartments: 206, 212[†], 306, 312[†], 406, 412[†]



SITE PLAN



APARTMENT LOCATION



LEVEL/PLOT

4 406, 412[†]
3 306, 312[†]
2 206, 212[†]

[†] Rotated to floorplan shown ► Entrance C-Cupboard HIU-Heat Interface Unit MVHR-Mechanical Ventilation with Heat Recovery Utility
W-Wardrobe WM-Washing Machine DW-Dishwasher FF-Fridge Freezer

[†] Rotated to floorplan shown ► Entrance C-Cupboard HIU-Heat Interface Unit MVHR-Mechanical Ventilation with Heat Recovery Utility
W-Wardrobe WM-Washing Machine DW-Dishwasher FF-Fridge Freezer

2 BED GILHAM HOUSE

Living/Kitchen/Dining	5.81m x 4.32m	19' 1" x 14' 2"
Main Bedroom	4.66m x 2.76m	15' 3" x 9' 0"
Bedroom 2	3.42m x 3.54m	11' 2" x 11' 7"
En-Suite Bathroom	1.68m x 2.28m	5' 6" x 7' 6"
Shower Room	1.98m x 2.28m	6' 5" x 7' 6"
Balcony	5.38m x 1.68m	17' 8" x 5' 6"
Total Internal Area	72.6 sq m	781 sq ft
Total Internal & External Area	81.6 sq m	877 sq ft

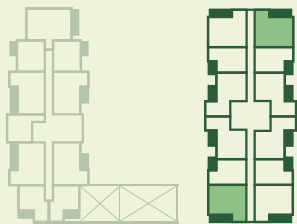
Apartments: 105, 204, 210[†], 304[†], 310[†], 404, 410[†]



SITE PLAN



APARTMENT LOCATION



LEVEL/PLOT

4	404, 210 [†]
3	304, 310 [†]
2	204, 210 [†]
1	105

[†] Rotated to floorplan shown ► Entrance C-Cupboard HIU-Heat Interface Unit MVHR-Mechanical Ventilation with Heat Recovery Utility W-Wardrobe WM-Washing Machine DW-Dishwasher FF-Fridge Freezer

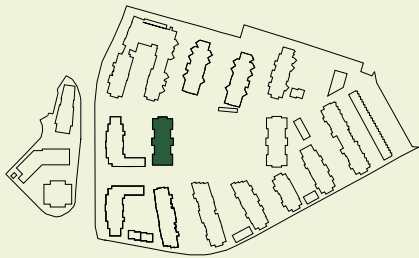
2 BED GILHAM HOUSE

Living/Kitchen/Dining	5.81m x 4.32m	19' 1" x 14' 2"
Main Bedroom	5.25m x 2.76m	17' 3" x 9' 0"
Bedroom 2	3.40m x 3.54m	11' 2" x 11' 7"
En-Suite Bathroom	1.68m x 2.28m	5' 6" x 7' 6"
Shower Room	1.98m x 2.28m	6' 5" x 7' 6"
Balcony	5.38m x 1.68m	17' 7" x 5' 6"
Total Internal Area	73.5 sq m	791 sq ft
Total Internal & External Area	82.5 sq m	887 sq ft

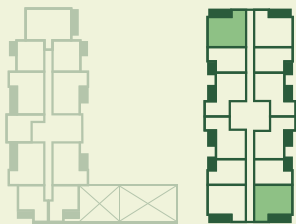
Apartments: 203, 209[†], 303, 309[†], 403



SITE PLAN



APARTMENT LOCATION




LEVEL/PLOT

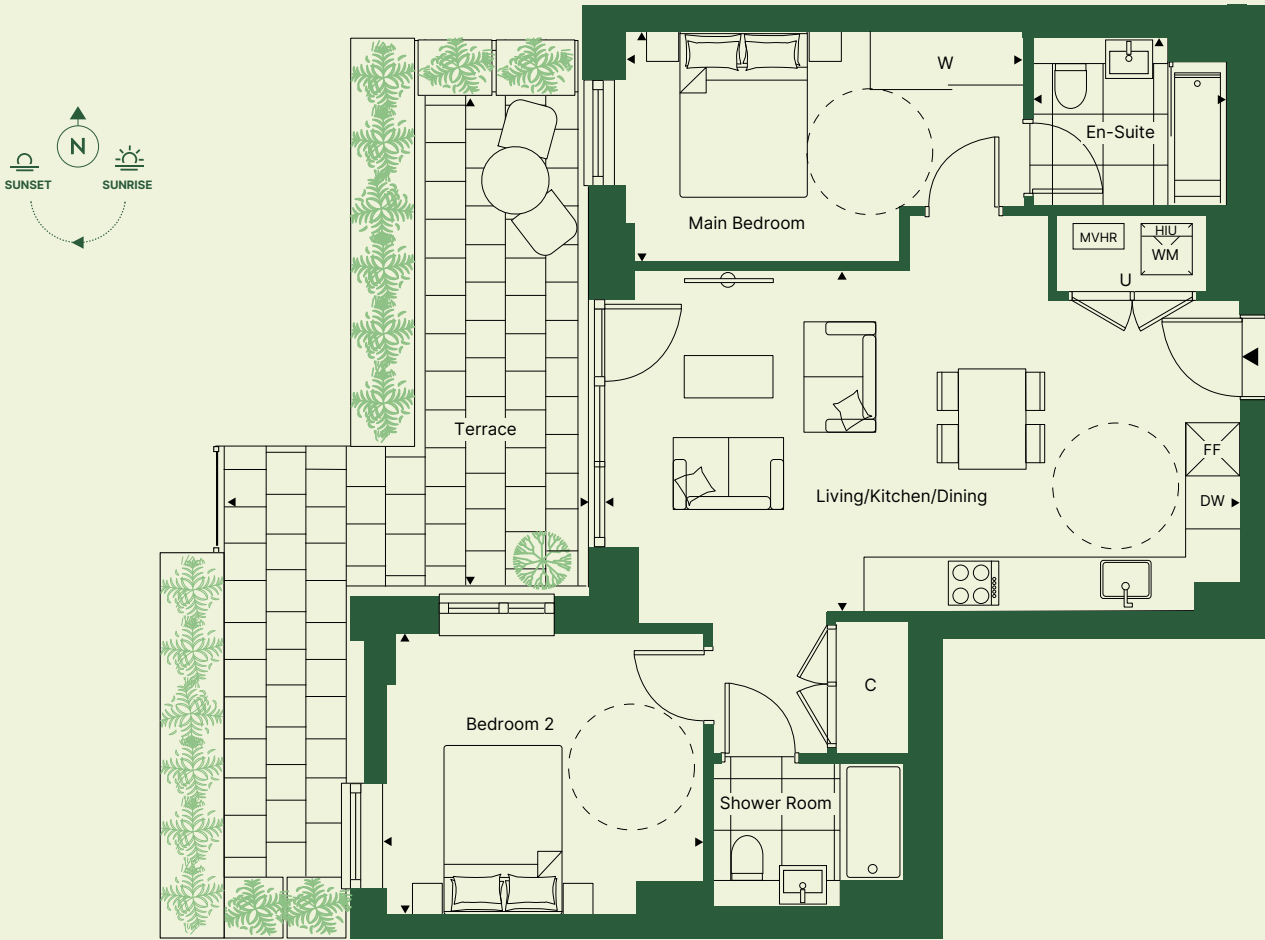
4	403
3	303, 309 [†]
2	203, 209 [†]

[†] Rotated to floorplan shown ► Entrance C-Cupboard HIU-Heat Interface Unit MVHR-Mechanical Ventilation with Heat Recovery Utility W-Wardrobe WM-Washing Machine DW-Dishwasher FF-Fridge Freezer

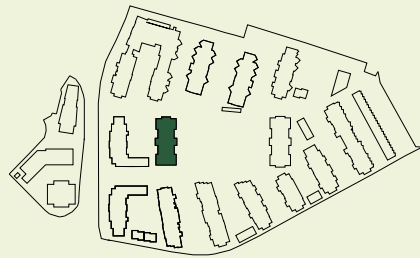
2 BED GILHAM HOUSE

Living/Kitchen/Dining	7.50m x 4.04m	24' 7" x 13' 3"
Main Bedroom	4.76m x 2.75m	15' 7" x 9' 0"
Bedroom 2	3.81m x 3.32m	12' 6" x 10' 10"
En-Suite Bathroom	1.68m x 2.28m	5' 6" x 7' 6"
Shower Room	1.98m x 2.28m	6' 5" x 7' 6"
Terrace	4.04m x10.15m	13' 3" x 33' 3"
Total Internal Area	72.8 sq m	784 sq ft
Total Internal & External Area	93.8 sq m	1010 sq ft

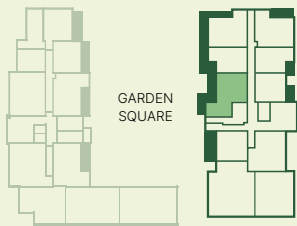
Apartment: 102 



SITE PLAN



APARTMENT LOCATION



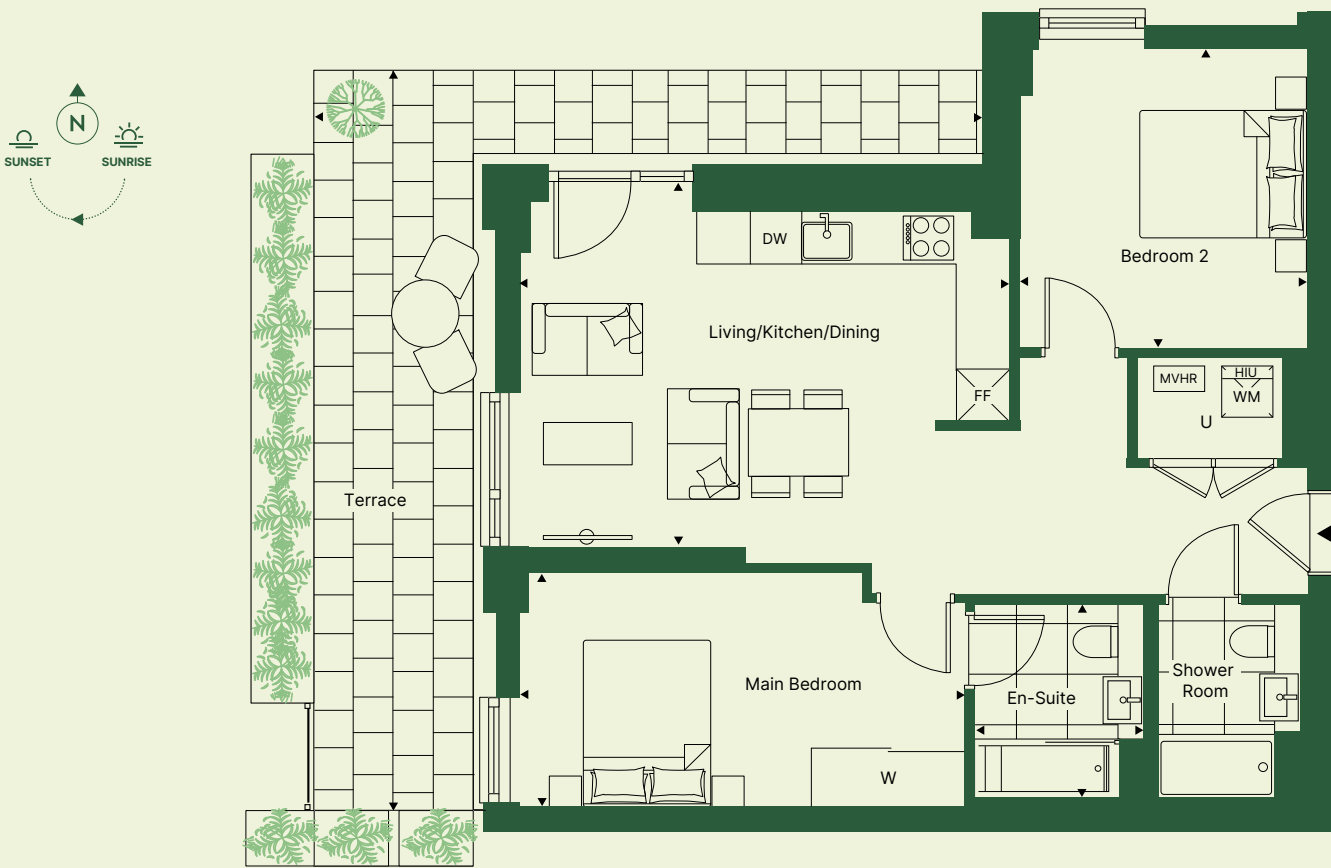
LEVEL/PLOT

1 102

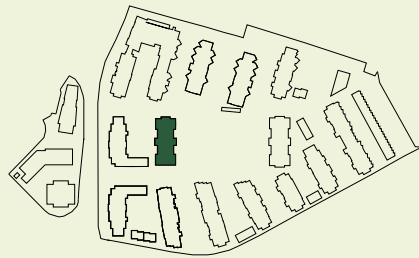
2 BED GILHAM HOUSE

Living/Kitchen/Dining	5.81m x 4.32m	19' 1" x 14' 2"
Main Bedroom	5.25m x 2.76m	17' 3" x 9' 0"
Bedroom 2	3.40m x 3.54m	11' 2" x 11' 7"
En-Suite Bathroom	1.68m x 2.28m	5' 6" x 7' 6"
Shower Room	1.98m x 2.28m	6' 5" x 7' 6"
Terrace	7.88m x 8.72m	25' 10" x 28' 7"
Total Internal Area	73.5 sq m	791 sq ft
Total Internal & External Area	97.3 sq m	1041 sq ft

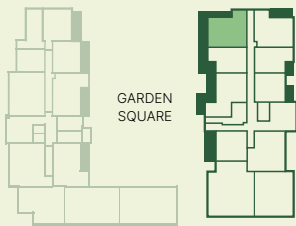
Apartment: 104



SITE PLAN



APARTMENT LOCATION



LEVEL/PLOT

1 104

► Entrance C-Cupboard HIU-Heat Interface Unit MVHR-Mechanical Ventilation with Heat Recovery Utility
W-Wardrobe WM-Washing Machine DW-Dishwasher FF-Fridge Freezer



IT'S ALL IN THE DETAIL

KITCHEN

- Cashmere kitchen cabinets with handleless soft close doors
- White speckled Silestone worktops with chalk upstand and splashback
- Satin steel undermounted sink with single lever Cascata mixer brushed steel tap
- Under sink 3 stage separation waste bin
- Bosch integrated single under counter oven with Bosch black glass hob
- Elica wall mounted grey extractor fan
- Bosch integrated fridge freezer
- Electrolux integrated dishwasher

BATHROOMS

- Large dark grey ceramic wall tiles
- Light grey floor tiles
- Semi-recessed white washbasin with chrome mixer tap
- Wall-hung WC with standard-close seat and chrome flushplate
- White acrylic bath with built-in bath/shower mixer, shower head and clear bath screen to main bathroom
- Mobiform black bath panel to main bathroom
- Mobiform cabinet with mirror and matching under sink towel store to main bathroom
- White shower with built-in mixer, shower head and sliding screen to en-suite
- Full height and width mirror above sink to en-suite
- Heated towel rail

BEDROOMS

- Cormar Sensation Twist carpet in light grey
- Fitted full height wardroom with silver mirrored doors
- INTERNAL DOORS & IRONMONGERY
- Polished chrome fittings
- White painted wooden doors
- White satinwood finish to woodwork and skirting boards

FLOORING & HEATING

- Pergo Espoo laminate flooring in grey wooden effect
- White radiator panel heaters

SECURITY & PEACE OF MIND

- Video entry system
- High quality, lockable, restricted opening windows and external doors
- 'Secured by Design' certification achieved throughout the development
- 12-hour concierge service and monitored CCTV
- Smoke detectors to corridors and living space
- Heat detector to kitchen
- Sprinkler system
- 12 year new build warranty
- 2 year defects period
- 990 year lease

ELECTRICAL & LIGHTING

- Downlights to living/kitchen/dining room, hall, bathroom and en suites
- White pendant lights to bedrooms and cupboards
- LED strip lights under kitchen cabinets
- Balcony wall lighting

GENERAL

- Electrolux freestanding washer/dryer housed in utility cupboard
- Wired for BT internet
- Fibre Optic service to all homes
- White paint finish to walls and ceilings throughout

We are unable to accommodate any individual changes, additions or amendments to the specification, layout or plans to any individual home. Please note that it may not be possible to obtain the products as referred to in the specification; in such cases a similar alternative will be provided. Peabody reserves the right to make these changes as required.



More than just a place to live

We at Peabody have a proud legacy of helping generations of homebuyers and residents find their place in thriving neighbourhoods, communities and homes for over 160 years.

The team at Peabody New Homes is dedicated to finding you a home that is more than just a place to live. A place you can call your own. A place to belong. A place that you're proud to call home.

Find @PeabodyNewHomes on



BUILDING HISTORY

Formed over 160 years ago by the American financier and philanthropist George Peabody, Peabody is one of the UK's oldest and largest housing associations responsible for more than 109,000 homes and around 220,000 residents across London and the Home Counties.



CUSTOMER FOCUS

Whether it's your first or forever home, we know that buying a new place can be a demanding time. Our sales team is committed to guiding you through the process and helping you every step of the way. Rated "Excellent" on Trustpilot, we're proud to offer you a service that makes a difference.



QUALITY, DESIGN & SUSTAINABILITY

Peabody's reputation is one of the most respected in the housing industry renowned for quality, multi-award-winning and innovative design. We work with industry experts and continually monitor quality throughout the building process to reduce our impact on climate change, lessen our carbon footprint and create properties people are proud to call home.

Our Greener Homes Programme is our commitment to the environment and will aim to minimise our impact on the planet and support thriving neighbourhoods.



Scan here to
find out more

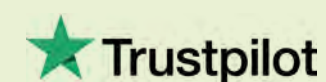


SOCIAL IMPACT

Our social purpose is why we exist. We re-invest the surplus made from the sale of our homes to provide more homes and services to those who need it most. We deliver services that support customers and the wider communities that we work in, and invest in local projects through our Community Foundation.



Scan here to
find out more



*2024/2025 Annual Report

Every care has been taken in the preparation of this brochure. The details contained herein are for guidance only and should not be relied upon as exactly describing any of the particular material illustrated or written by any order under the Consumer Protection from Unfair Trading Regulations 2008. This information does not constitute a contract, part of a contract or warranty. The developer operates a programme of continuous product development. Features, internal and external, may vary from time to time and may differ from those shown in the brochure. Computer generated images and photography used within this brochure are indicative only. Lombard Square is a marketing name and may not form part of the postal address for these properties. Home layouts provide approximate measurements only. Dimensions, which are taken from the indicated points of measurement, are for guidance only and are not intended to be used for carpet sizes, appliance space or items of furniture. Areas are provided as gross internal areas and may vary. Bathroom and kitchen layouts are indicative only and are subject to change. The information contained within this document does not constitute part of any offer, contract or warranty. Whilst the plans have been prepared with all due care for the convenience of the intending purchaser, the information contained herein is a preliminary guide only. February 2026.



THAMESMEAD 