

The Alders at Great Oldbury **The Highgrove**

2 bedroom mid/end terraced

Computer generated image for illustration purposes only. Finishes and materials used may be subject to change. Image shows Plots 491-492, other plots may vary.



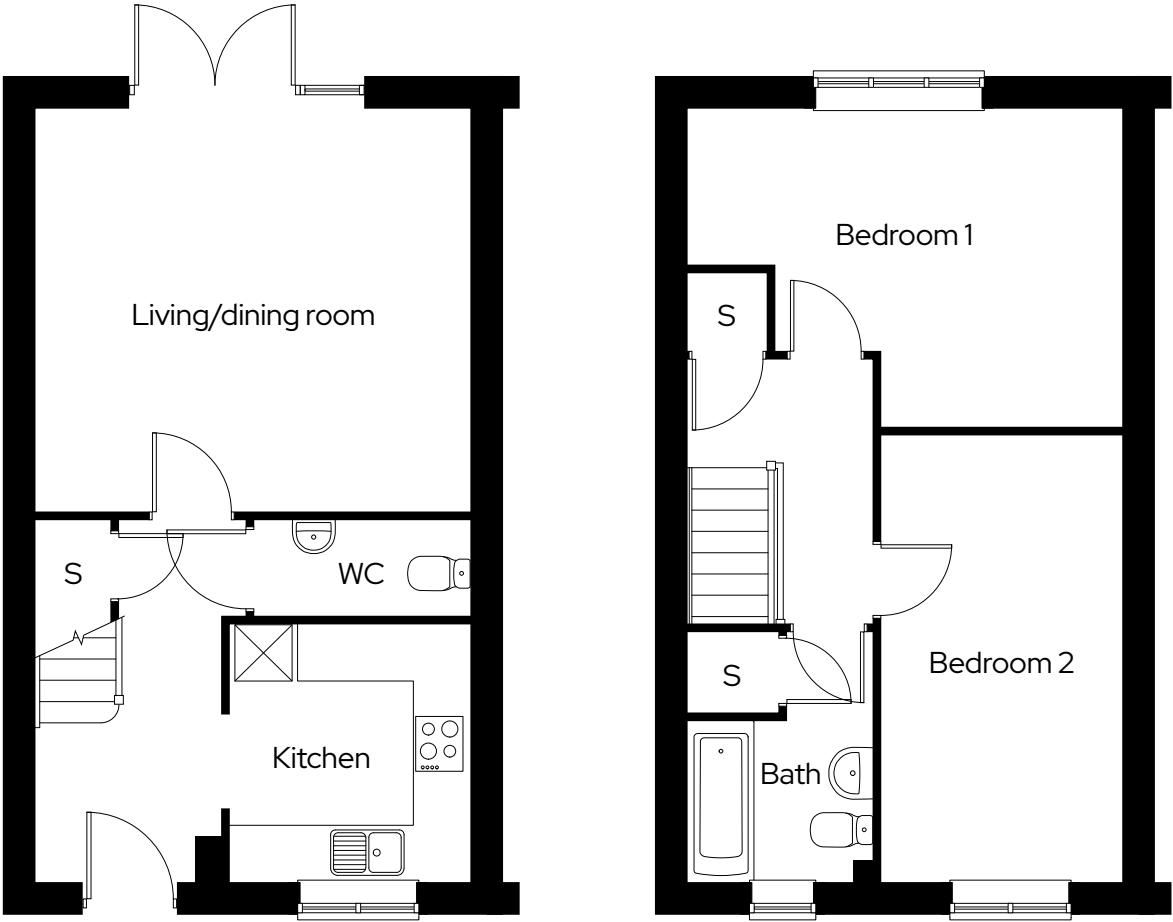
The Alders at Great Oldbury The Highgrove

2 bedroom end terraced
Plot 478, 481*, 491

2  1  2† 

Room

Kitchen	2.5m x 2.7m
Living/dining room	4.6m x 4.3m
Bedroom 1	4.6m x 3.4m
Bedroom 2	2.6m x 4.8m






* Mirrored plot † Plot 491 has one parking space S Storage

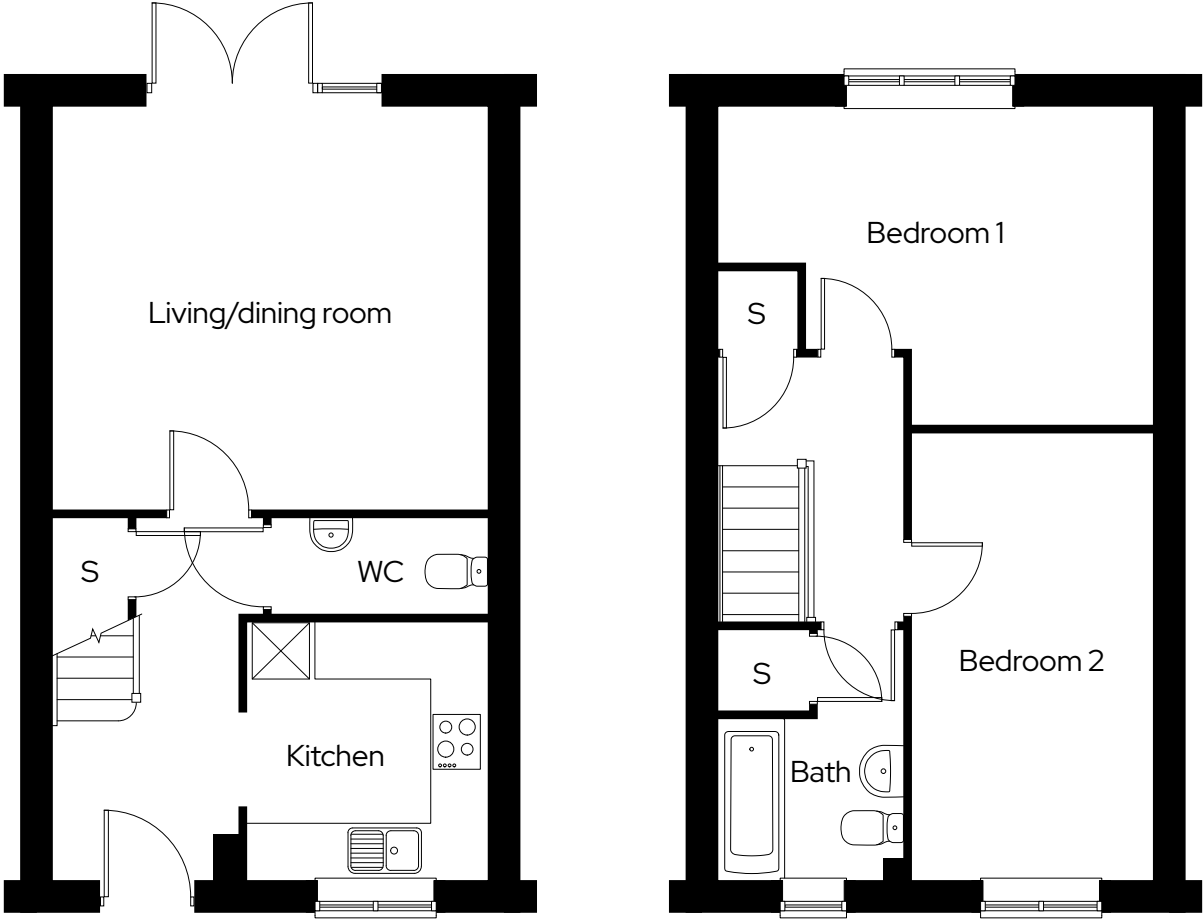
Floor plan for illustration purposes only and not to scale. Dimensions are maximum and for general guidance, not suitable for furniture, appliances, or carpet sizing.

The Alders at Great Oldbury The Highgrove

2 bedroom mid terraced
Plot 479, 480*, 492

2  1  1 

Room	
Kitchen	2.5m x 2.7m
Living/dining room	4.6m x 4.3m
Bedroom 1	4.6m x 3.4m
Bedroom 2	2.6m x 4.8m



* Mirrored plot S Storage





Floor plan for illustration purposes only and not to scale. Dimensions are maximum and for general guidance, not suitable for furniture, appliances, or carpet sizing.

The Alders at Great Oldbury

Site plan

North



-  **The Highgrove**
2 bedroom mid/end terraced
-  **Parking spaces**
-  **Visitor parking**
-  **Cycle store**

Site layout and landscaping is
indicative only and subject to change.

