

Living at EdCity

Shared Ownership homes



Shared Ownership at EdCity

Shared Ownership is a way of making home ownership possible for more people. You buy a share of your home, with a lower deposit, smaller mortgage and monthly payment on the rest.

Hammersmith & Fulham Council redefines Shared Ownership by keeping everything simple and transparent, helping you understand each stage clearly before and after you buy. We believe lasting relationships are built on honesty and openness, so we aim to make sure our communication is as clear, straightforward, and jargon-free as possible. From your first enquiry to moving in your new home, we're here to provide guidance and support you can trust, ensuring you feel informed and confident every step of the way.

The Council is committed to delivering high-quality Shared Ownership homes, with a focus on affordability, community-driven development, and long-term sustainability. Through strong governance, inclusive housing strategies, and a dedication to well-designed, energy-efficient properties, the council aims to support residents in achieving secure, affordable homeownership.

Aspirational living

Discover your new chapter at Living at EdCity, a collection of 84, one and two-bedroom apartments in the thriving White City Innovation District.

Moments from the former BBC Television Centre – now a lively destination blending dining, entertainment and a vibrant communal plaza where pop-ups and seasonal events bring the area to life – Living at EdCity is set in a heartland of creative enterprise, surrounded by opportunities to make life more fulfilling.

Part of the wider EdCity development, this pioneering scheme brings together homes, education and community facilities, including a new school and inspiring spaces designed to support lifelong learning.

With two stations within a 10-minute walk, Living at EdCity offers rapid connections on the Central and Hammersmith & City lines. But with Europe's largest shopping centre, Westfield London, a stroll away; educational opportunities at EdCity right on the doorstep; and White City's thriving business district offering a wealth of career prospects, you might never want to leave!



Live, learn and thrive in the innovative heart of west London



Gateway to opportunity

White City, in the London Borough of Hammersmith & Fulham, is one of the most exciting areas of the capital, and at Living at EdCity you'll be at the heart of the adventure.

White City Studios, where BBC and ITV film shows, is a five-minute stroll, so you might find yourself celebrity spotting as you head to Flying Horse Coffee or to pick up a sourdough loaf from Black Farmer. Enjoy sushi at Endo or a rooftop lunch at The Broadcaster, which also has live DJ sessions.

You'll never be short of a great night out. Electric Cinema offers movies in style, while iconic venues Eventim Apollo and O2 Shepherd's Bush Empire are easily reachable. During the day, enjoy the free community events that pop up around White City Studios, head to QPR's stadium for the football or to Westfield London for retail therapy. Relax in Hammersmith Park's tranquil Japanese garden, or work up a sweat indoors at Westway Sports & Fitness centre.

Everything you need is close at hand, including convenience stores and places to eat. While for parents, Ark White City Primary Academy is on-site, and two secondary schools are less than half a mile away.

Whether you're looking for opportunities for leisure, culture or career, Living at EdCity is the perfect base.



Shepherd's Bush Empire



Westfield Centre



Electric Cinema at White City Studio



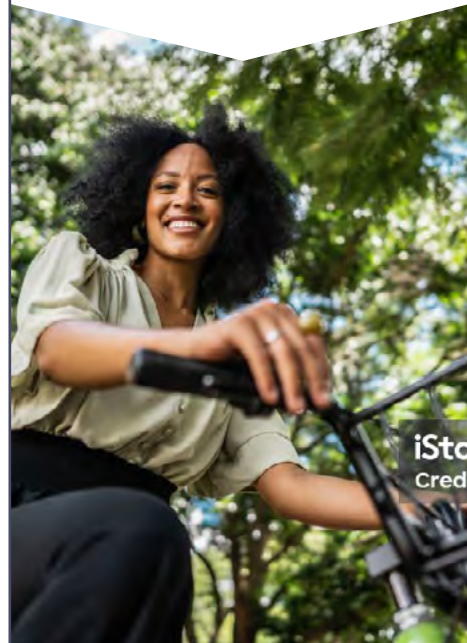
White City Tube Station

Things to do

Hammersmith Park

Hammersmith Park is best known for its peaceful Japanese garden with its pond and waterfall – some of the trees here were originally brought from Japan over a century ago. As well as relaxing and soaking up the peaceful atmosphere, there are plenty of active things to do here, including playing some mixed doubles on the free tennis courts, having a kickabout, or flexing your muscles at the outdoor gym. There’s a gated children’s play area and a newly planted Tiny Forest.

 6 minutes



Holland Park

Holland Park is one of London’s most iconic green spaces, combining semi-wild woodland with beautifully kept formal gardens and impressive sports facilities including netball, cricket, tennis, football, golf and even giant outdoor chess. The adventure playground features a 25m zip wire, climbing wall and giant seesaw. For calmer moments, wander the famous Kyoto Garden, with its Japanese maples, tiered waterfalls and koi carp, or enjoy tea and cake in the park’s café, or an exceptional Indian meal at the Belvedere Restaurant beside the Orangery.

 11 minutes

Westfield London

London’s largest shopping centre – and one of the biggest in the whole of Europe - is home to over 300 retail stores, including an entire section, The Village, dedicated to luxury and premium brands such as Louis Vuitton, Gucci, Tiffany & Co and Prada. With John Lewis, M&S and TKMaxx, along with countless smaller shops, there’s something for everyone. And when you’ve finished shopping, there are 91 restaurants to choose from, plus entertainment including bowling, cinema and indoor golf.

 13 minutes



Shepherds Bush Empire

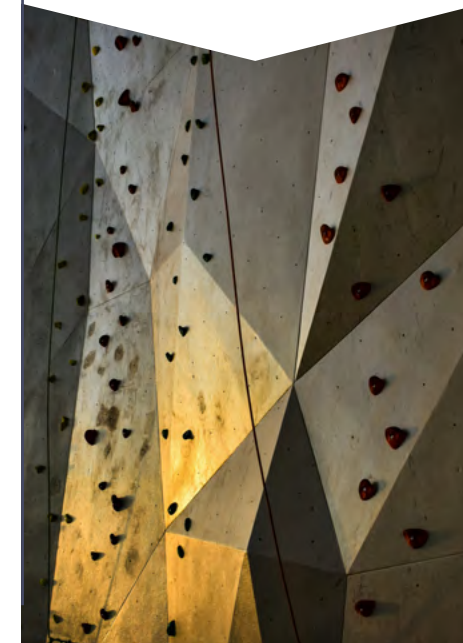
For over a century, O2 Shepherd's Bush Empire has been a centre of entertainment. Opened in 1903 as a variety theatre, its trademark tower is a much-loved feature of the local skyline. When variety fell out of favour in the 1950s, it became a BBC TV studio where iconic shows like That’s Life, Hancock’s Half Hour, Wogan and The Old Grey Whistle Test were filmed. In its current incarnation, it’s home to live entertainment five nights a week, ranging from international artists to comedy shows.

 6 minutes  17 minutes

City Bouldering

Run by passionate climbers on a mission to bring their sport to new audiences, City Bouldering offers action-packed indoor exercise all year round. The world-class facility features a state-of-the-art Bouldering arena and nine Auto-Belay routes, offering a challenge even for experienced climbers. There are classes for adults and children to learn how to make the most of the climbing wall, along with social events, clubs and a variety of special sessions, including parties.

 4 minutes  20 minutes



Portobello Road Market - Notting Hill

Probably the most famous market street in the world, Portobello Road Market has been running for 160 years and is legendary as one of the city’s most iconic shopping experiences. On its busiest trading days, Fridays and Saturdays, the market stalls stretch for a mile along Portobello Road and around the corner into Golborne Road. Sunday is another busy day and there are stalls and shops open every day of the week, with vintage clothes, arts-and-crafts, street food and antiques.

 11 minutes

Travel times are taken from Google and can vary depending on the time of day.

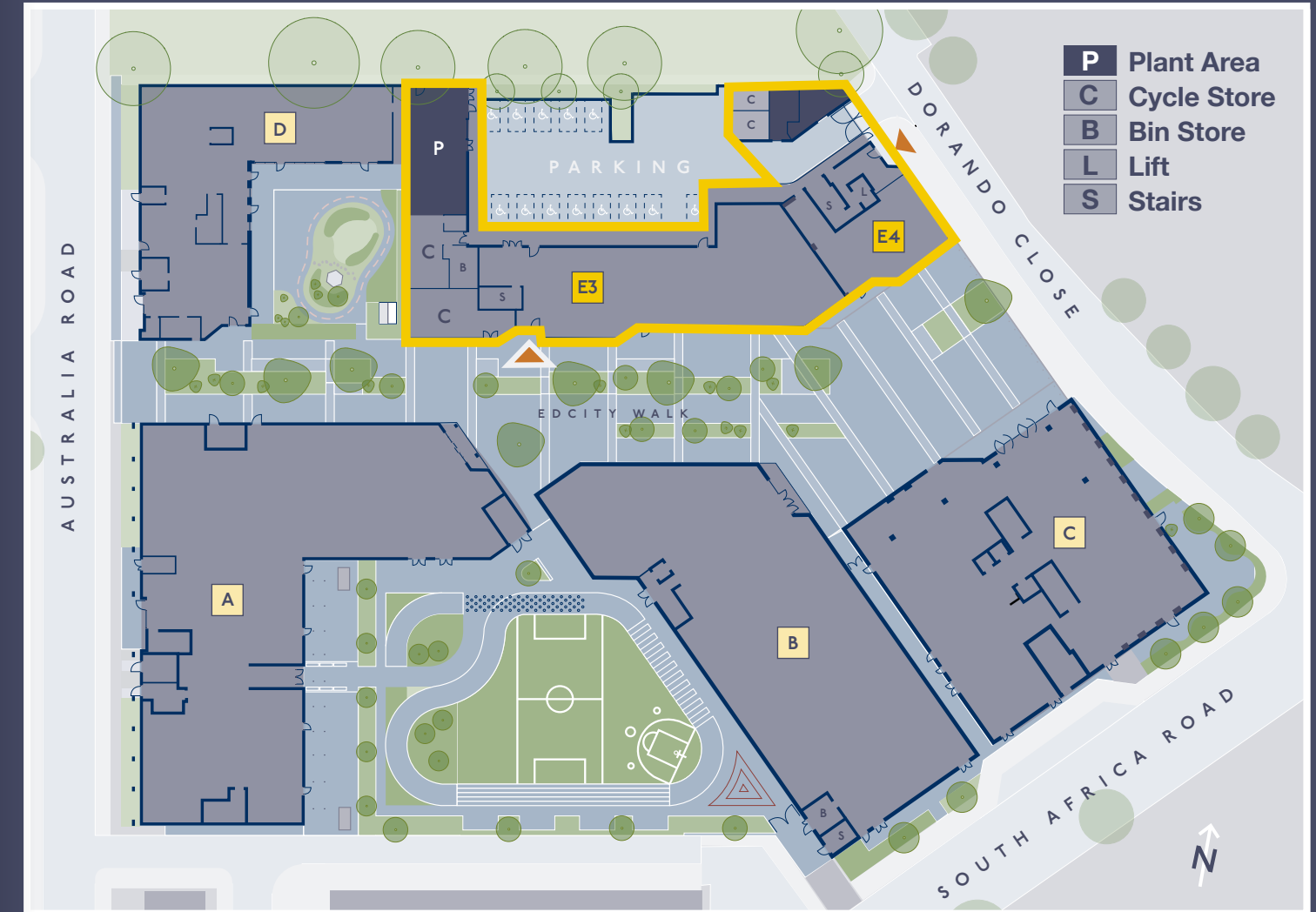
Development overview

This contemporary collection of 84 Shared Ownership, one and two-bedroom apartments, with private balconies, is part of the wider EdCity development that is bringing new homes, fresh community facilities including a youth hub, a new primary school, nursery and lifelong learning centre, and modern office facilities to the area.

Opening up a key gateway into the White City Innovation District, the development includes a new public square and new pedestrian and cycle routes linking the development with the wider community and providing a speedy walking route to White City Underground Station. Attractively landscaped areas include a linear rain garden with trees and plants, along with benches to help you enjoy the environment. A planned café will add to the facilities.

The six and seven storey residential buildings offer a high standard of accommodation, with a selection of different layouts to suit every need, and three different interior finish options, providing a variety of one and two-bedroom properties perfect for couples or young families, Living at EdCity offers a fantastic opportunity to get on to the housing ladder for buyers who live or work in the borough.

EdCity Siteplan - Ground Floor Arrangement



A Ark Junior School & Homes

C Cafe Commercial Office Space

E3 Adult Education & Living at EdCity

B WEST Youth Zone

D Ark Nursery School Homes

E4 Commercial Space & Living at EdCity

Not to scale
The site layout is intended for illustrative purposes only and is subject to change.

The place to be

Living at EdCity enjoys excellent travel connections, with two London Underground stations – White City and Wood Lane – within a 10-minute walk. Easy access to the Central, Circle and Hammersmith & City Lines mean that the whole of London is at your fingertips. Prime locations such as Westfield London, White City Studios and Hammersmith Hospital are an easy walk away, along with schools, restaurants and entertainment, so you can spend less time travelling and more time living.

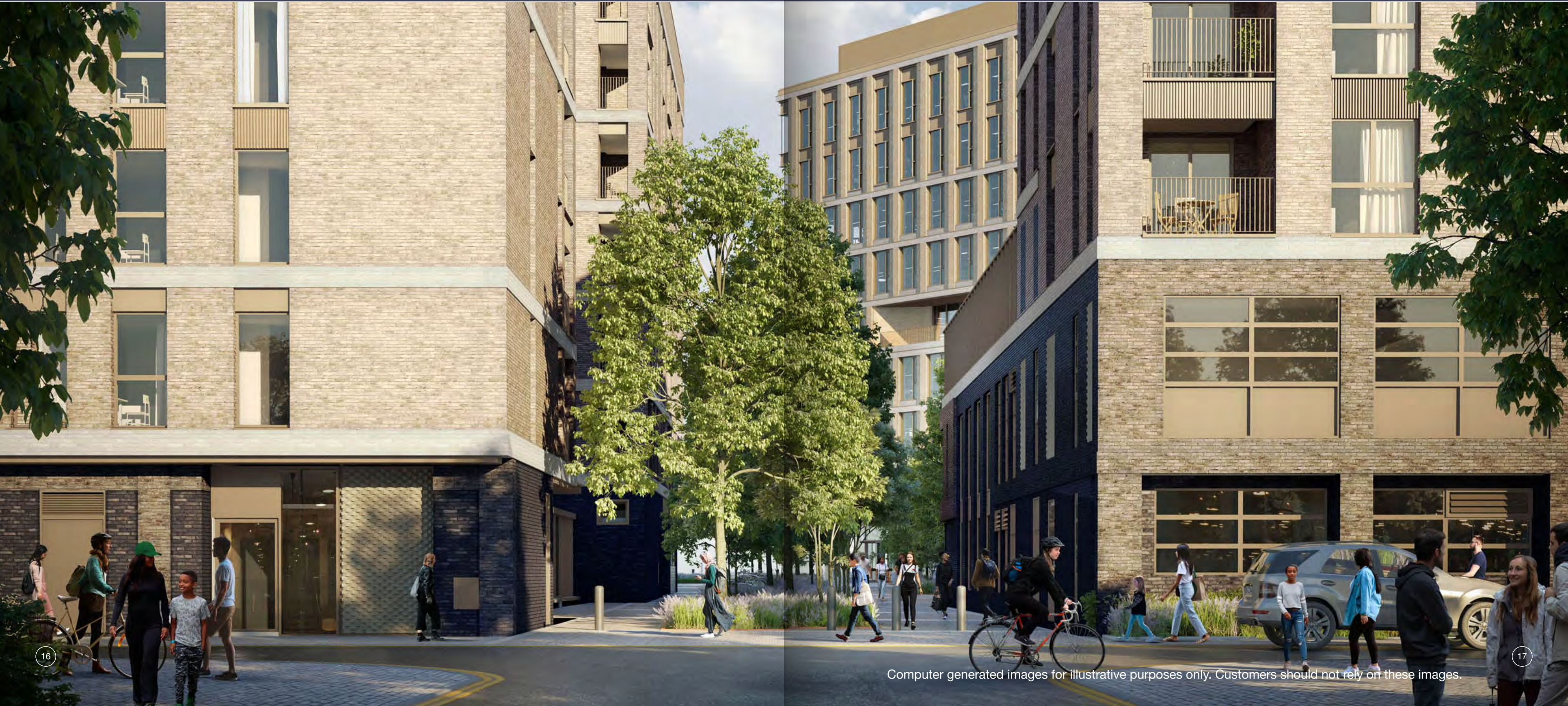


14 Approximate shortest travel times are shown in minutes, taken from Google Maps. Public transport times include walking. Times will vary depending on route/s taken.



KEY

- 1 Hammersmith Hospital
- 2 Eventim Apollo (Venue)
- 3 Charing Cross Hospital
- 4 Portobello Road Market
- 5 Westfield London
- 6 Kensington Gardens & Hyde Park
- 7 Holland Park
- 8 The Design Museum





Specification 1

TYPE 19

Kitchen

- Fully fitted kitchen in Dusk Blue with silver handles
- Concrete White laminate worktop with white tiled splashback
- Single, electric Beko oven, ceramic hob and canopy cooker hood
- Free standing fridge freezer
- Integrated Beko slimline dishwasher
- Blanco 1.5 brushed stainless steel sink
- Pull-out recycling bins
- Free standing washing machine

Bathroom

- White sanitaryware with chrome fittings
- Thermostatic shower mixer, rain shower head and handset in chrome
- Stone Cream ceramic wall tiles
- Glazed shower screen over bath (shower curtain to accessible units)
- Chrome towel rail
- Triple door mirrored vanity cabinet
- Slate countertop
- Shaver point

Flooring

- Poplar-effect vinyl to kitchen, hallway, living and dining area
- Carpet in bedrooms
- Ceramic floor tiles in bathrooms

Security & Connectivity

- Mains-powered smoke, heat and carbon monoxide detectors
- Broadband provision (subject to owners' subscription)
- Video door entry system
- Cycle storage

General

- Private outdoor space to every home
- Shared courtyard gardens
- Lifts to upper floors
- En-suite bathroom to selected apartments



Specification 2

TYPES 1, 3, 5, 6 & 7

Kitchen

- Fully fitted handleless kitchen in Gloss Cashmere
- Quartz worktop in Speckled White with white glass splashback
- Single, electric Beko fan oven, ceramic hob and canopy cooker hood
- Integrated Beko fridge-freezer
- Integrated Beko slimline dishwasher
- Blanco 1.5 brushed stainless steel sink
- Pull-out recycling bins
- AEG washing machine to plot E3.05.07 only.

Bathroom

- White sanitaryware with chrome fittings
- Thermostatic shower mixer, rain shower head and handset in chrome
- Stone Cream ceramic wall tiles
- Glazed shower screen over bath (shower curtain to accessible units)
- Chrome towel rail
- Triple door mirrored vanity cabinet
- Slate countertop
- Shaver point

Flooring

- Oak-effect vinyl plank to kitchen, hallway, living and dining area
- Carpet in bedrooms
- Ceramic floor tiles in bathrooms

Security & Connectivity

- Mains-powered smoke, heat and carbon monoxide detectors
- Broadband provision (subject to owners' subscription)
- Video door entry system
- Cycle storage

General

- Beko freestanding washer/dryer located in storage cupboard
- Private outdoor space to every home
- Shared courtyard gardens
- Lifts to upper floors
- En-suite bathroom to selected apartments



Specification 3

TYPES 2, 4, 8, 9, 10, 11, 12, 13, 14, 15, 16, 17 & 18

Kitchen

- Fully fitted handleless kitchen in Gloss Ivory
- Quartz worktop in Speckled White with white glass splashback
- Single, electric Neff fan oven, induction hob and canopy or chimney cooker hood
- Integrated Zanussi fridge-freezer
- Integrated Zanussi full-sized dishwasher
- Blanco 1.5 brushed stainless steel sink
- Pull-out recycling bins

Bathroom

- White sanitaryware with chrome fittings
- Thermostatic shower mixer, rain shower head and handset in chrome
- Stone Cream ceramic wall tiles
- Glazed shower screen over bath (shower curtain to accessible units)
- Chrome towel rail
- Triple door mirrored vanity cabinet
- Slate countertop
- Shaver point

Flooring

- Rustic oak-effect vinyl plank to kitchen, hallway, living and dining area
- Carpet in bedrooms
- Ceramic floor tiles in bathrooms

Security & Connectivity

- Mains-powered smoke, heat and carbon monoxide detectors
- Broadband provision (subject to owners' subscription)
- Video door entry system
- Cycle storage

General

- Zanussi freestanding washer/dryer located in storage cupboard
- Private outdoor space to every home
- Shared courtyard gardens
- Lifts to upper floors
- En-suite bathroom to selected apartments

Plot Locator



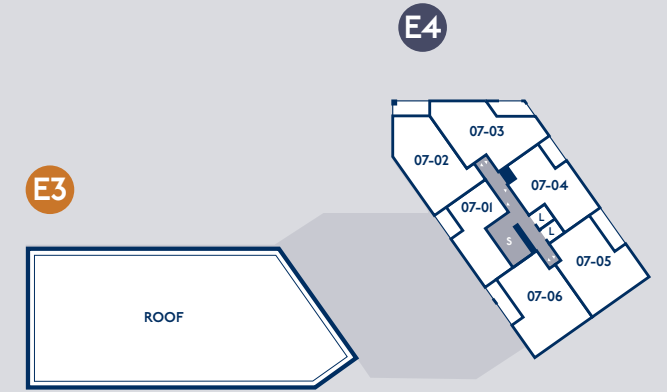
Level 0 (Sitemap)



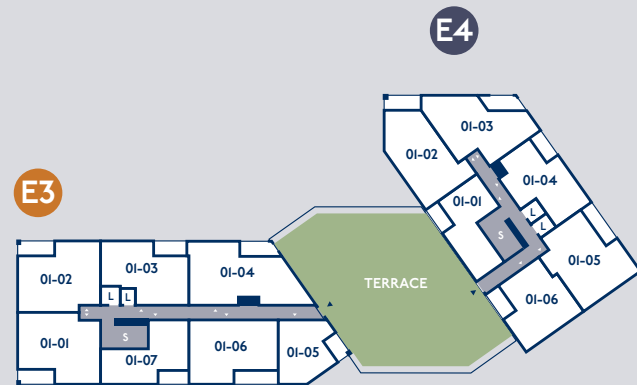
Level 5



Level 6



Level 7



Level 1



Level 2



Level 3



Level 4

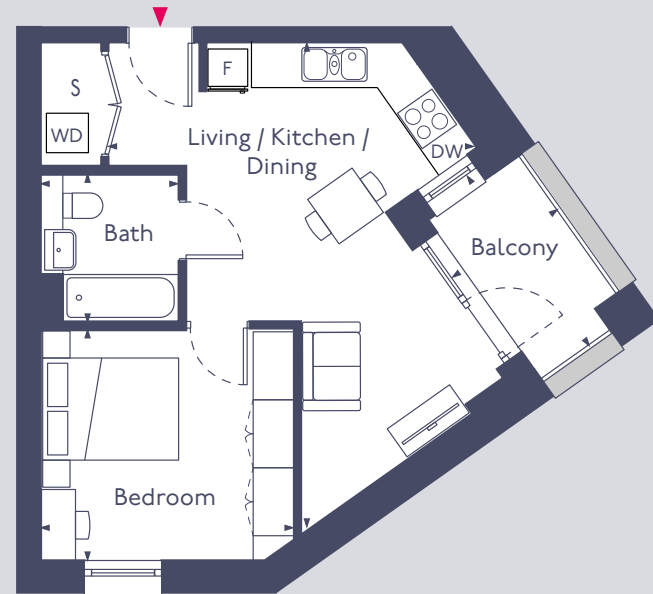
Key **S** Stairs **L** Lift

Not to scale

TYPE 1 (SPEC 2)
1 Bedroom Apartment

Plot Floor

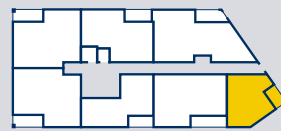
E3-01-05 1



Gross Internal Area 43.1 SqM 463 SqFt

Room	Dimensions (m)	Dimensions (ft)
Living/ Kitchen/Dining	5.31m x 7.20m	17' 5" x 23' 7"
Bedroom	3.74m x 3.39m	12' 3" x 11' 1"
Bathroom	2.00m x 2.15m	6' 6" x 7' 0"
Balcony	1.84m x 2.90m	6' 0" x 9' 6"

- S** Store
- DW** Dishwasher
- F** Fridge freezer
- WD** Washer / dryer

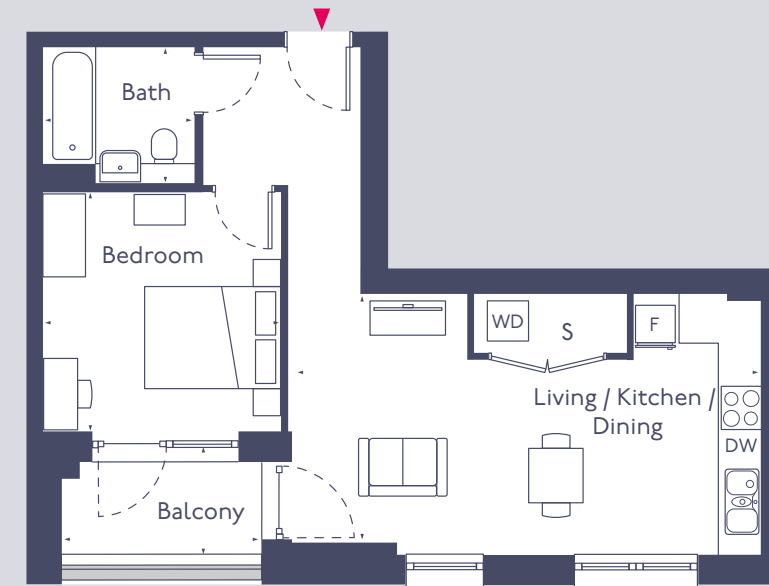


Building E3

TYPE 2 (SPEC 3)
1 Bedroom Apartment

Plots Floor

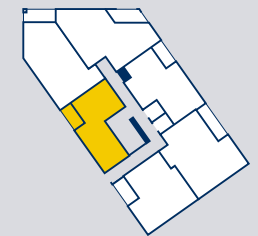
- E4-01-01 1
- E4-02-01 2
- E4-03-01 3
- E4-04-01 4
- E4-05-01 5
- E4-06-01 6
- E4-07-01 7



Gross Internal Area 50.5 SqM 543 SqFt

Room	Dimensions (m)	Dimensions (ft)
Living/ Kitchen/Dining	6.97m x 3.69m	22' 10" x 12' 1"
Bedroom	3.50m x 3.52m	11' 6" x 11' 6"
Bathroom	2.15m x 1.98m	7' 0" x 6' 5"
Balcony	3.12m x 1.75m	10' 3" x 5' 9"

- S** Store
- DW** Dishwasher
- F** Fridge freezer
- WD** Washer / dryer

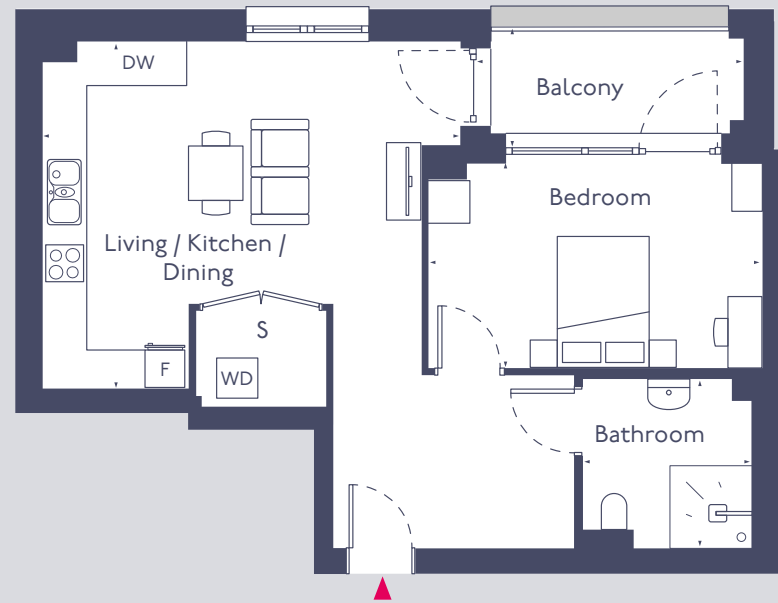


Building E4

TYPE 3 (SPEC 2)
1 Bedroom Apartment

Plots Floor

- E3-01-03' 1
- E3-02-03' 2
- E3-03-03' 3

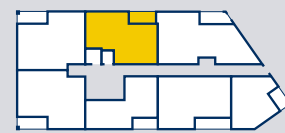


*Adaptable units

Gross Internal Area 61.1 SqM 657 SqFt

Room	Dimensions (m)	Dimensions (ft)
Living/ Kitchen/Dining	6.17m x 5.11m	20' 2" x 16' 9"
Bedroom	4.91m x 3.01m	16' 1" x 9' 10"
Bathroom	2.44m x 2.41m	8' 0" x 7' 11"
Balcony	3.92m x 1.71m	12' 10" x 5' 7"

- S** Store
- DW** Dishwasher
- F** Fridge freezer
- WD** Washer / dryer



Building E3

TYPE 4 (SPEC 3)
1 Bedroom Apartment

Plots Floor

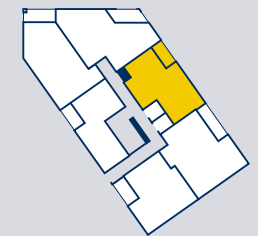
- E4-01-04 1
- E4-02-04 2
- E4-03-04 3
- E4-04-04 4
- E4-05-04 5
- E4-06-04 6
- E4-07-04 7



Gross Internal Area 59.1 SqM 636 SqFt

Room	Dimensions (m)	Dimensions (ft)
Living/ Kitchen/Dining	6.74m x 5.11m	22' 1" x 16' 9"
Bedroom	3.77m x 3.54m	12' 4" x 11' 7"
Bathroom	1.99m x 2.17m	6' 6" x 7' 1"
Balcony	3.45m x 1.59m	11' 4" x 5' 2"

- S** Store
- DW** Dishwasher
- F** Fridge freezer
- WD** Washer / dryer



Building E4

TYPE 5 (SPEC 2)
1 Bedroom Apartment

Plots Floor

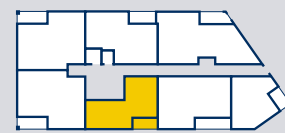
- E3-01-07 1
- E3-02-07 2
- E3-03-07 3
- E3-04-07 4
- E3-05-07 5
- E3-06-07 6



Gross Internal Area 52.3 SqM 563 SqFt

Room	Dimensions (m)	Dimensions (ft)
Living/ Kitchen/Dining	7.13m x 3.90m	23' 4" x 12' 9"
Bedroom	3.44m x 3.61m	11' 3" x 11' 10"
Bathroom	2.00m x 2.11m	6' 7" x 6' 11"
Balcony	3.46m x 1.60m	11' 4" x 5' 3"

- S** Store
- DW** Dishwasher
- F** Fridge freezer
- WD** Washer / dryer

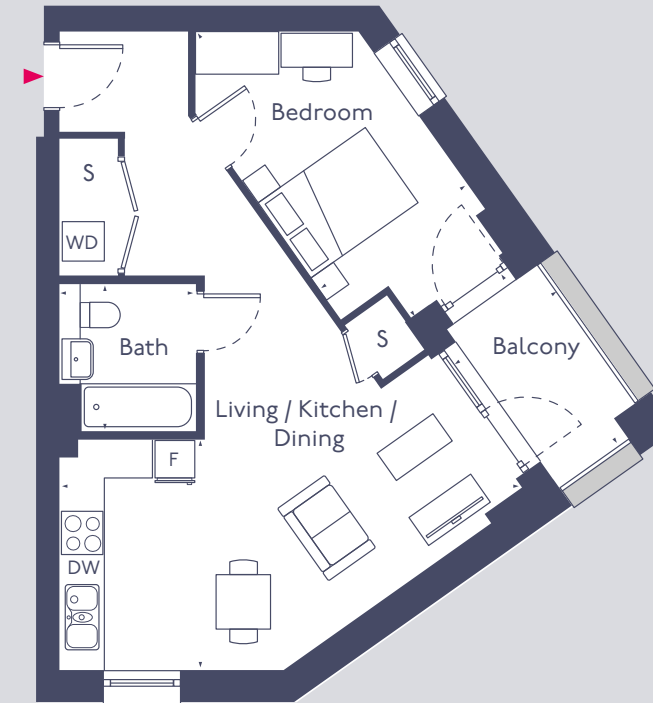


Building E3

TYPE 6 (SPEC 2)
1 Bedroom Apartment

Plots Floor

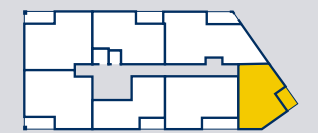
- E3-02-05 2
- E3-03-05 3
- E3-04-05 4
- E3-05-05 5
- E3-06-05 6



Gross Internal Area 52.0 SqM 559 SqFt

Room	Dimensions (m)	Dimensions (ft)
Living/ Kitchen/Dining	6.74m x 3.37m	22' 1" x 11' 0"
Bedroom	2.65m x 5.21m	8' 8" x 17' 1"
Bathroom	2.14m x 2.00m	7' 0" x 6' 7"
Balcony	1.84m x 3.09m	6' 0" x 10' 1"

- S** Store
- DW** Dishwasher
- F** Fridge freezer
- WD** Washer / dryer

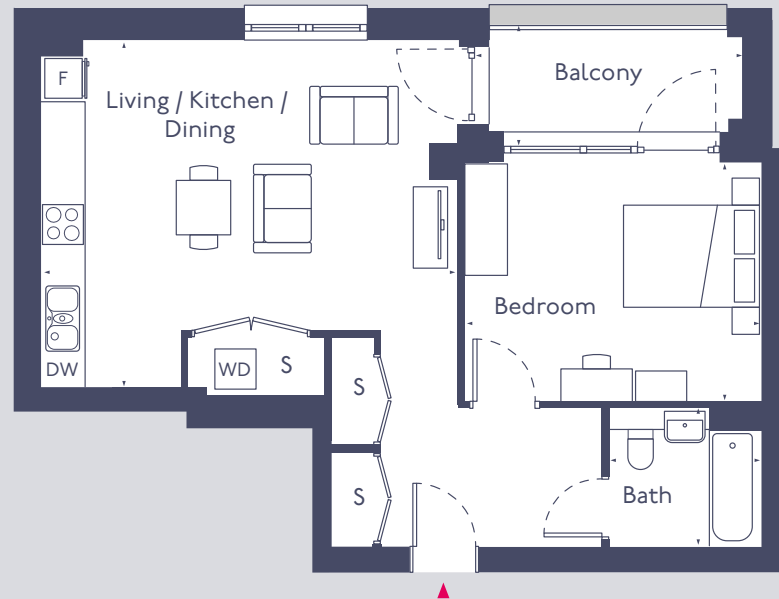


Building E3

TYPE 7 (SPEC 2)
1 Bedroom Apartment

Plots Floor

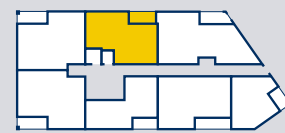
- E3-04-03 4
- E3-05-03 5
- E3-06-03 6



Gross Internal Area 61.1 SqM 657 SqFt

Room	Dimensions (m)	Dimensions (ft)
Living/ Kitchen/Dining	6.15m x 5.11m	20' 2" x 16' 9"
Bedroom	4.35m x 3.51m	14' 3" x 11' 6"
Bathroom	2.15m x 1.99m	7' 0" x 6' 6"
Balcony	3.91m x 1.73m	12' 10" x 5' 8"

- S** Store
- DW** Dishwasher
- F** Fridge freezer
- WD** Washer / dryer



Building E3

TYPE 8 (SPEC 3)
2 Bedroom Apartment

Plots Floor

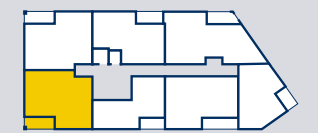
- E3-01-01 1
- E3-02-01 2
- E3-03-01 3
- E3-04-01 4
- E3-05-01 5
- E3-06-01 6



Gross Internal Area 72.0 SqM 775 SqFt

Room	Dimensions (m)	Dimensions (ft)
Living/ Kitchen/Dining	3.95m x 6.61m	12' 11" x 21' 8"
Bedroom 1	3.54m x 5.06m	11' 7" x 16' 7"
Bedroom 2	2.65m x 5.06m	8' 8" x 16' 7"
Bathroom	2.18m x 2.00m	7' 1" x 6' 7"
Ensuite	2.16m x 1.63m	7' 1" x 5' 4"
Balcony	4.34m x 1.70m	14' 3" x 5' 7"

- S** Store
- DW** Dishwasher
- F** Fridge freezer
- WD** Washer / dryer



Building E3

TYPE 9 (SPEC 3)
2 Bedroom Apartment

Plot Floor

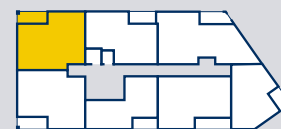
E3-06-02 6



Gross Internal Area 71.5 SqM 769 SqFt

Room	Dimensions (m)	Dimensions (ft)
Living/ Kitchen/Dining	3.67m x 6.61m	12' 0" x 21' 8"
Bedroom 1	3.53m x 5.08m	11' 7" x 16' 8"
Bedroom 2	2.67m x 5.09m	8' 9" x 16' 8"
Bathroom	2.14m x 2.00m	7' 0" x 6' 7"
Ensuite	2.15m x 1.60m	7' 0" x 5' 3"
Balcony	4.35m x 1.73m	14' 3" x 5' 8"

- S** Store
- DW** Dishwasher
- F** Fridge freezer
- WD** Washer / dryer

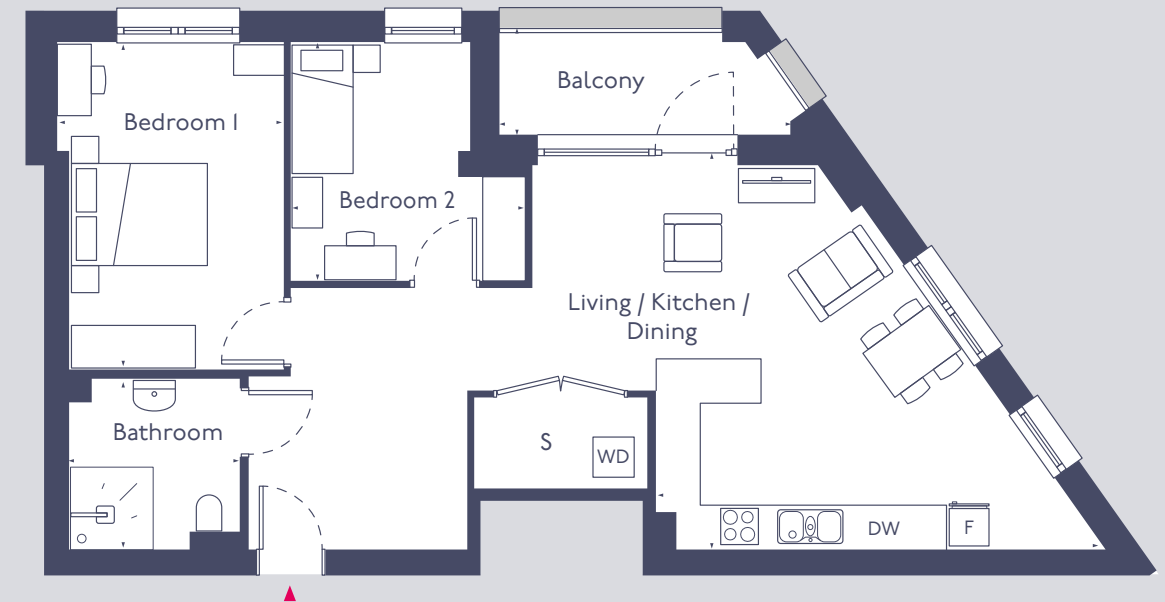


Building E3

TYPE 10 (SPEC 3)
2 Bedroom Apartment

Plots Floor

E3-01-04 1
E3-02-04 2



*Adaptable units

Gross Internal Area 82.6 SqM 889 SqFt

Room	Dimensions (m)	Dimensions (ft)
Living/ Kitchen/Dining	6.57m x 5.64m	21' 6" x 18' 6"
Bedroom 1	3.36m x 4.79m	11' 0" x 15' 8"
Bedroom 2	3.44m x 3.49m	11' 3" x 11' 5"
Bathroom	2.51m x 2.46m	8' 2" x 8' 0"
Balcony	4.52m x 1.71m	14' 9" x 5' 7"

- S** Store
- DW** Dishwasher
- F** Fridge freezer
- WD** Washer / dryer

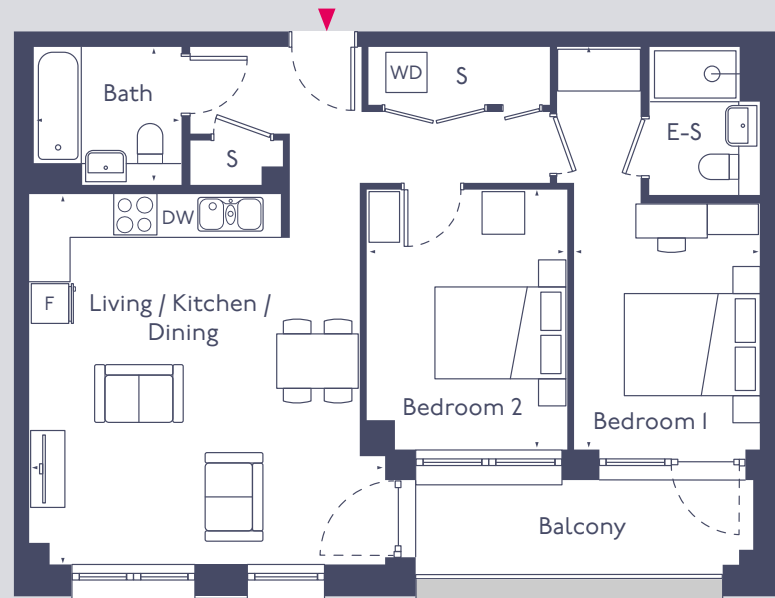


Building E3

TYPE 11 (SPEC 3)
2 Bedroom Apartment

Plots Floor

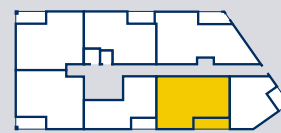
- E3-01-06 1
- E3-02-06 2
- E3-03-06 3
- E3-04-06 4
- E3-05-06 5
- E3-06-06 6



Gross Internal Area 72.0 SqM 775 SqFt

Room	Dimensions (m)	Dimensions (ft)
Living/ Kitchen/Dining	5.24m x 5.45m	17' 2" x 17' 10"
Bedroom 1	2.73m x 5.91m	8' 11" x 19' 4"
Bedroom 2	2.95m x 3.81m	9' 8" x 12' 6"
Bathroom	2.15m x 1.99m	7' 0" x 6' 6"
Ensuite	1.62m x 2.15m	5' 3" x 7' 0"
Balcony	5.14m x 1.57m	16' 10" x 5' 1"

- S** Store
- DW** Dishwasher
- F** Fridge freezer
- WD** Washer / dryer

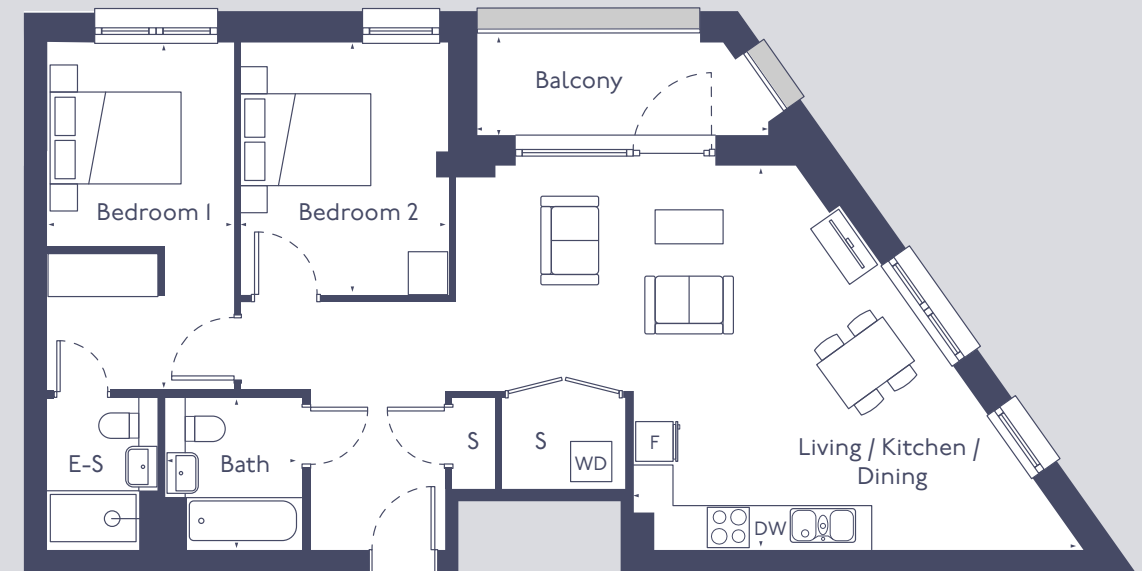


Building E3

TYPE 12 (SPEC 3)
2 Bedroom Apartment

Plots Floor

- E3-03-04 3
- E3-04-04 4
- E3-05-04 5
- E3-06-04 6



Gross Internal Area 82.6 SqM 889 SqFt

Room	Dimensions (m)	Dimensions (ft)
Living/ Kitchen/Dining	6.57m x 5.65m	21' 6" x 18' 6"
Bedroom 1	2.73m x 5.07m	8' 11" x 16' 7"
Bedroom 2	3.28m x 3.67m	10' 9" x 12' 0"
Bathroom	1.99m x 2.14m	6' 6" x 7' 0"
Ensuite	1.61m x 2.16m	5' 3" x 7' 1"
Balcony	4.50m x 1.73m	14' 9" x 5' 8"

- S** Store
- DW** Dishwasher
- F** Fridge freezer
- WD** Washer / dryer

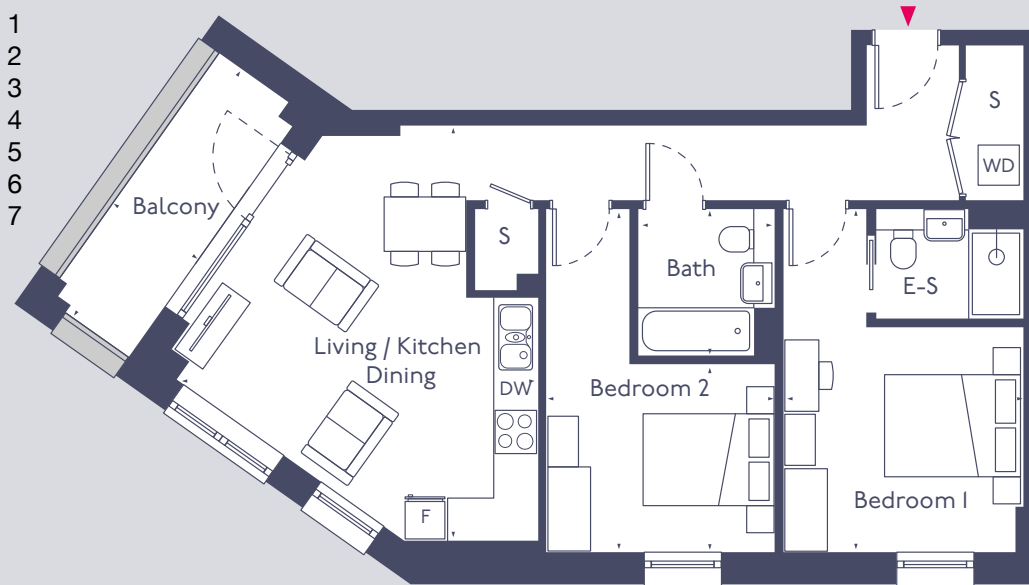


Building E3

TYPE 13 (SPEC 3)
2 Bedroom Apartment

Plots Floor

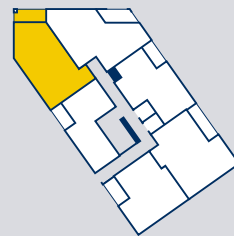
- E4-01-02 1
- E4-02-02 2
- E4-03-02 3
- E4-04-02 4
- E4-05-02 5
- E4-06-02 6
- E4-07-02 7



Gross Internal Area 72.2 SqM 777 SqFt

Room	Dimensions (m)	Dimensions (ft)
Living/ Kitchen/Dining	5.39m x 6.08m	17' 8" x 19' 11"
Bedroom 1	3.51m x 5.03m	11' 6" x 16' 6"
Bedroom 2	3.36m x 5.03m	11' 0" x 16' 6"
Bathroom	1.97m x 2.17m	6' 5" x 7' 1"
Ensuite	2.16m x 1.57m	7' 1" x 5' 2"
Balcony	1.74m x 4.46m	5' 8" x 14' 7"

- S** Store
- DW** Dishwasher
- F** Fridge freezer
- WD** Washer / dryer



Building E4

TYPE 14 (SPEC 3)
2 Bedroom Apartment

Plots Floor

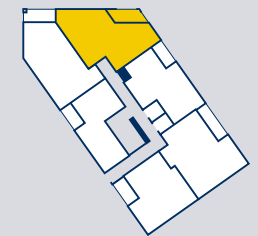
- E4-01-03 1
- E4-02-03 2
- E4-03-03 3
- E4-04-03 4
- E4-05-03 5
- E4-06-03 6
- E4-07-03 7



Gross Internal Area 68.8 SqM 740 SqFt

Room	Dimensions (m)	Dimensions (ft)
Living/ Kitchen/Dining	5.20m x 4.66m	17' 0" x 15' 3"
Bedroom 1	4.79m x 3.53m	15' 8" x 11' 7"
Bedroom 2	4.73m x 2.92m	15' 6" x 9' 7"
Bathroom	1.98m x 2.15m	6' 6" x 7' 0"
Ensuite	1.62m x 2.18m	5' 3" x 7' 1"
Balcony	1.72m x 5.34m	5' 7" x 17' 6"

- S** Store
- DW** Dishwasher
- F** Fridge freezer
- WD** Washer / dryer



Building E4

TYPE 15 (SPEC 3)
2 Bedroom Apartment

Plot Floor

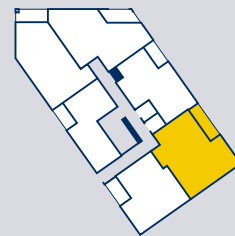
E4-01-05 1



Gross Internal Area 74.3 SqM 799 SqFt

Room	Dimensions (m)	Dimensions (ft)
Living/ Kitchen/Dining	4.60m x 4.63m	15' 1" x 15' 2"
Bedroom 1	5.06m x 3.45m	16' 7" x 11' 3"
Bedroom 2	3.86m x 3.44m	12' 8" x 11' 3"
Bathroom	1.99m x 2.14m	6' 6" x 7' 0"
Ensuite	1.58m x 2.18m	5' 2" x 7' 1"
Balcony	5.23m x 1.43m	17' 2" x 4' 8"

- S** Store
- DW** Dishwasher
- F** Fridge freezer
- WD** Washer / dryer



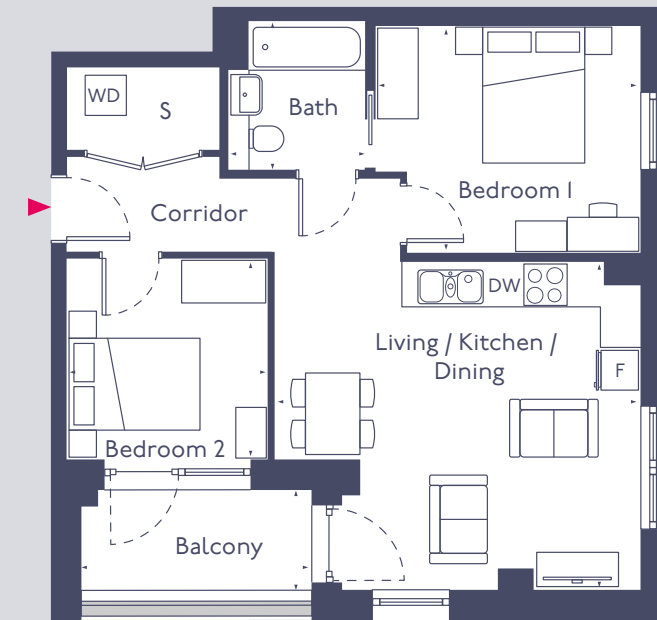
Building E4

All floor plans in this brochure are for general guidance only. All room dimensions are subject to a plus/minus 5% tolerance. Measurements are taken from plans representing the largest cross-section of each room - the actual build may vary. Any dimensions shown are not intended to be used for carpet sizes, appliances, spaces or items of furniture. These particulars do not constitute any part of an offer or contract with regard to the specifications.

TYPE 16 (SPEC 3)
2 Bedroom Apartment

Plot Floor

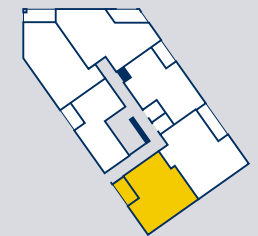
E4-01-06 1



Gross Internal Area 61.0 SqM 656 SqFt

Room	Dimensions (m)	Dimensions (ft)
Living/ Kitchen/Dining	5.38m x 4.84m	17' 7" x 15' 10"
Bedroom 1	3.91m x 3.33m	12' 10" x 10' 11"
Bedroom 2	2.98m x 2.98m	9' 9" x 9' 9"
Bathroom	2.19m x 1.98m	7' 2" x 6' 6"
Balcony	3.56m x 1.79m	11' 8" x 5' 10"

- S** Store
- DW** Dishwasher
- F** Fridge freezer
- WD** Washer / dryer



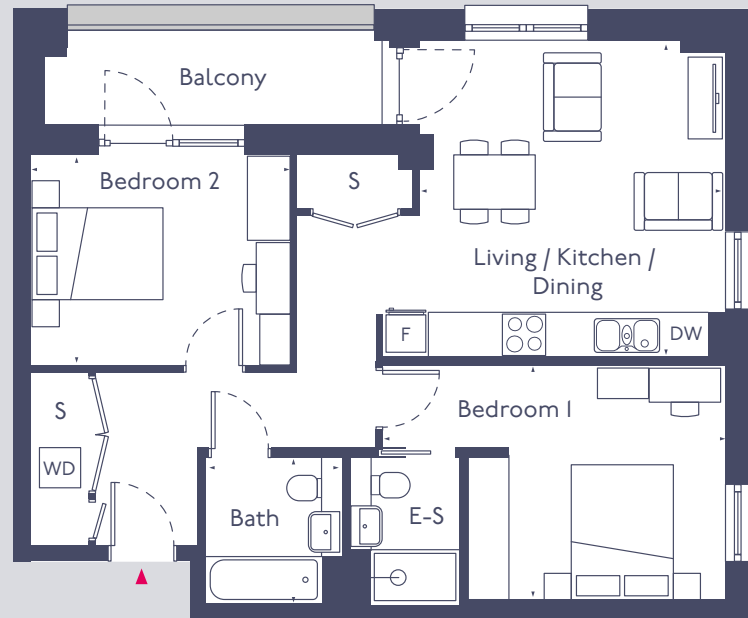
Building E4

All floor plans in this brochure are for general guidance only. All room dimensions are subject to a plus/minus 5% tolerance. Measurements are taken from plans representing the largest cross-section of each room - the actual build may vary. Any dimensions shown are not intended to be used for carpet sizes, appliances, spaces or items of furniture. These particulars do not constitute any part of an offer or contract with regard to the specifications.

TYPE 17 (SPEC 3)
2 Bedroom Apartment

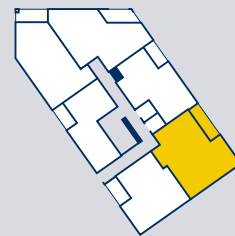
Plots Floor

- E4-02-05 2
- E4-03-05 3
- E4-04-05 4
- E4-05-05 5
- E4-06-05 6
- E4-07-05 7



Gross Internal Area	72.1 SqM	776 SqFt
Room		
Living/ Kitchen/Dining	4.52m x 4.63m	14' 10" x 15' 2"
Bedroom 1	5.07m x 3.42m	16' 7" x 11' 2"
Bedroom 2	3.80m x 3.07m	12' 5" x 10' 1"
Bathroom	1.98m x 2.18m	6' 6" x 7' 1"
Ensuite	1.58m x 2.17m	5' 2" x 7' 1"
Balcony	5.14m x 1.61m	16' 10" x 5' 3"

- S** Store
- DW** Dishwasher
- F** Fridge freezer
- WD** Washer / dryer

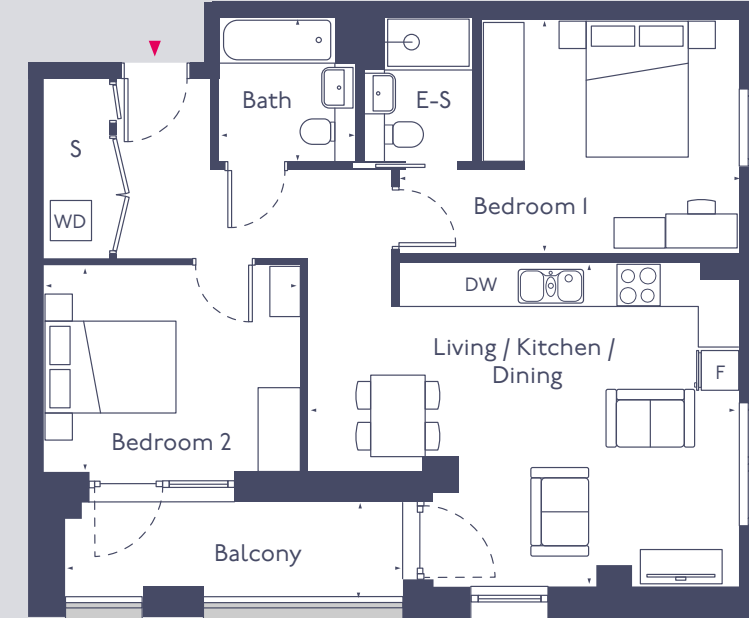


Building E4

TYPE 18 (SPEC 3)
2 Bedroom Apartment

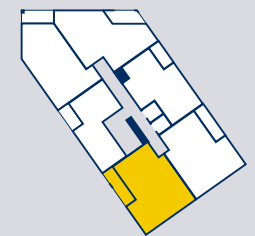
Plots Floor

- E4-02-06 2
- E4-03-06 3
- E4-04-06 4
- E4-05-06 5
- E4-06-06 6
- E4-07-06 7



Gross Internal Area	72.7 SqM	782 SqFt
Room		
Living/ Kitchen/Dining	6.35m x 4.77m	20' 10" x 15' 7"
Bedroom 1	4.99m x 3.41m	16' 4" x 11' 2"
Bedroom 2	3.76m x 3.02m	12' 4" x 9' 11"
Bathroom	1.98m x 2.16m	6' 6" x 7' 1"
Ensuite	1.58m x 2.17m	5' 2" x 7' 1"
Balcony	5.15m x 1.42m	16' 11" x 4' 7"

- S** Store
- DW** Dishwasher
- F** Fridge freezer
- WD** Washer / dryer

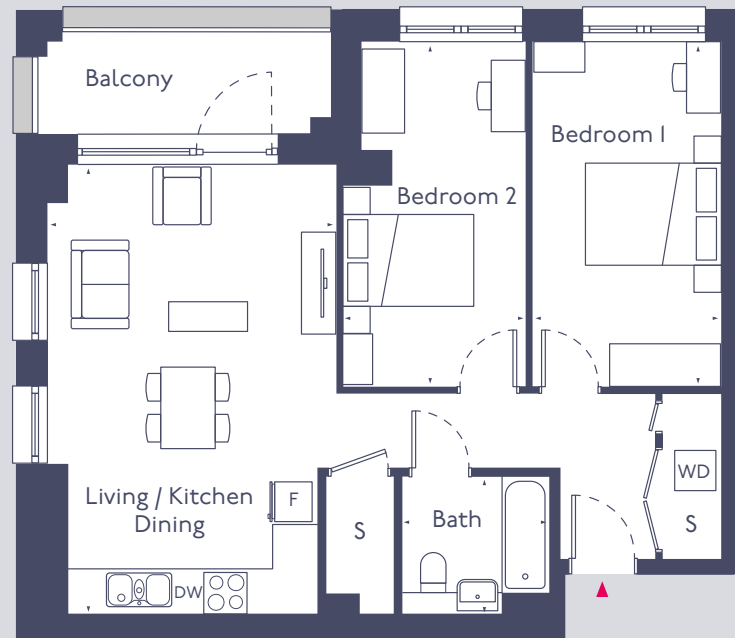


Building E4

TYPE 19 (SPEC 1)
2 Bedroom Apartment

Plots Floor

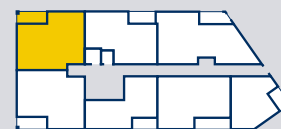
- E3-01-02 1
- E3-02-02 2
- E3-03-02 3
- E3-04-02 4
- E3-05-02 5



Gross Internal Area 71.5 SqM 769 SqFt

Room	Dimensions (m)	Dimensions (ft)
Living/ Kitchen/Dining	4.26m x 6.60m	13' 11" x 21' 8"
Bedroom 1	2.75m x 5.07m	9' 0" x 16' 7"
Bedroom 2	2.65m x 5.07m	8' 8" x 16' 7"
Bathroom	2.17m x 2.05m	7' 1" x 6' 8"
Balcony	4.35m x 1.68m	14' 3" x 5' 6"

- S** Store
- DW** Dishwasher
- F** Fridge freezer
- WD** Washer / dryer



Building E3



Building B - WEST Youth Zone & EdCity Walk.
Computer generated images for illustrative purposes only. Customers should not rely on these images.

About Shared Ownership

With Shared Ownership, you buy your own home in your own way. You start with a share that's right for you, then you can buy extra shares over time, so it's all manageable and suits your income.

You start by buying between 10% and 75% of your Shared Ownership home. That means your monthly mortgage payments and deposits are smaller than they would be if you bought your home outright.

There are two other monthly payments for your Shared Ownership home: One is the rental payment for the share of your home that L B H & F owns. The other is the service charge, which pays to look after the building you live in.

There are also the usual other costs, like household utility bills. You can choose to buy a bigger share of

your Shared Ownership home in the future and even own 100%. The bigger the share you own, the lower your Shared Ownership payment will be.

You can sell your share at any time if you decide to move on.



Tel 020 8607 0550
or visit [sharedownership.co.uk](https://www.sharedownership.co.uk)
 Selling agents for Hammersmith & Fulham

Disclaimer

Hammersmith & Fulham Council has taken all reasonable care in preparing the information provided in this brochure. However, all details are subject to change and are supplied solely for general guidance. The Council, its advisers, and its agents do not warrant the accuracy or completeness of the information contained herein. All particulars are given for illustrative purposes only. In particular, all plans, prospectuses, descriptions, dimensions, and measurements are approximate and provided for guidance only. Such information is supplied without responsibility on the part of the Council or its agents. H&F Home Buy eligibility and affordability criteria apply. The Council undertakes continuous product development, and information relating to our homes may vary from time to time. Nothing in this brochure constitutes express or implied part of a formal offer, invitation, or contract to acquire any property. For these reasons, no reliance should be placed on the information contained within this brochure. March 2026

H&F Upstream Homes: Living, working and thriving together

Hammersmith & Fulham occupies a unique position in the capital: upstream of the city's traditional centres, our ideas and achievements flow through to influence the rest of London. This applies to our industrial strategy, but also to our best-in-class homes offer.

We have one of the best economic growth rates in the country, driven by major investment from tech and life sciences through our industrial strategy, Upstream London, which has brought with it thousands of cutting-edge new jobs. As we all continue to benefit from this industrial revolution, we're on a mission to build the best possible homes for our residents to live, work and thrive in.

That's why Hammersmith & Fulham Council is committed to providing high quality, low energy homes for those who live and work here. Our goal is to help you achieve your aspirations, and make living, working and putting down roots in Hammersmith & Fulham affordable.

We put our people at the heart of our offer. Our commitment to our residents flows through everything we do. That's why at least 50% of our new developments are affordable. And that's why we plan to lower household bills by building more environmentally friendly homes per km² than any other local authority.

We work with residents to ensure that our developments reflect what you and your community need and manage our properties directly. That means we are efficient and effective in what we deliver. We focus on people, not profit: we are part of the community and are invested in supporting our tenants and understanding your needs.

Our offer is simple: homes in H&F, by H&F, for H&F.



