





**SO Resi is a way of making home ownership possible for more people. You buy a share of your home, with a lower deposit, smaller mortgage and pay a monthly rent on the remaining share.**

SO Resi redefines Shared Ownership, by making everything clear and uncomplicated so you understand how it works at every stage, before and after you buy. Our SO Resi homeowners are important to us and we aim to build strong, lasting relationships by being there to answer your questions in a language that makes sense.

SO Resi by Metropolitan Thames Valley is a non-profit housing association. For over fifty years we've been building and managing good quality and affordable new homes. By doing that, we've been helping to create communities that people are proud of and happy to live in.

# Modern living, well-connected

A collection of  
1 & 2 bedroom  
apartments

SO Resi North Acton offers a thoughtfully designed collection of one and two bedroom Shared Ownership apartments within a landmark new neighbourhood in North Acton.

Designed with modern living in mind, these stylish apartments feature open-plan layouts that maximise light and space, with private balconies to all homes. Quality finishes run throughout, creating contemporary, calm interiors that are easy to make your own.

Set within attractively landscaped surroundings, SO Resi North Acton places you at the centre of a well-connected West London community – where everyday convenience, green space and vibrant local culture come together.

|                      |    |
|----------------------|----|
| The area             | 4  |
| Connectivity         | 8  |
| Development overview | 10 |
| Specification        | 18 |
| Plans                | 20 |





# A vibrant place to call home

Nestled in the heart of West London, Acton offers the perfect balance of city energy and neighbourhood charm. It's a place where tree-lined streets meet independent cafés, where green spaces offer a breath of fresh air, and where creative culture and a strong sense of community give the area its unmistakable warmth.

Whether it's a morning run through the park, a weekend brunch with friends, or a quiet moment in a local spa, Acton offers all the essentials of modern London living.

And when it's time to be on the move, getting around couldn't be easier. With the Underground, Overground and Elizabeth Line all close by, you'll have fast, reliable links to Central London and beyond.



Wander down to Basil & Tom's for HG Walters meat, Paul Rhodes sourdough, Neal's Yard cheeses and more – just a 7-minute cycle from SO Resi North Acton.

Travel times are taken from Google and can vary depending on the time of day.



1



2



3



4



5



6

SO Resi North Acton | The area

# Discover your new neighbourhood

## 1 PoetsParakeet

Effortlessly stylish and endlessly inviting, this natural wine bar and modern European restaurant is one of Acton's best-kept secrets. Think small plates, organic pours and an atmosphere that always hits the right note.

7 minutes

## 2 The Private Spa

Sleek, modern and right in the heart of Acton, The Private Spa offers expert treatments in a contemporary setting. Whether it's a massage, facial or time in the sauna, this is the place to feel pampered and refreshed.

8 minutes

## 3 Putt in the Park

Perfect for a sunny afternoon or a casual get-together, this mini golf course in Acton Park offers fun for all ages – with drinks and bites available to round off your game.

7 minutes

## 4 Westfield Shopping Centre

Westfield London is a landmark destination for fashion, dining and entertainment in the heart of West London. With flagship stores and standout restaurants, it brings global style right on the doorstep.

21 minutes

## 5 David Lloyd Clubs

More than just a gym – it's a lifestyle hub. With a swimming pool, tennis courts, spa facilities and a vibrant community feel, David Lloyd Acton Park is a place to train, unwind and connect.

6 minutes

## 6 ODEON Luxe Acton

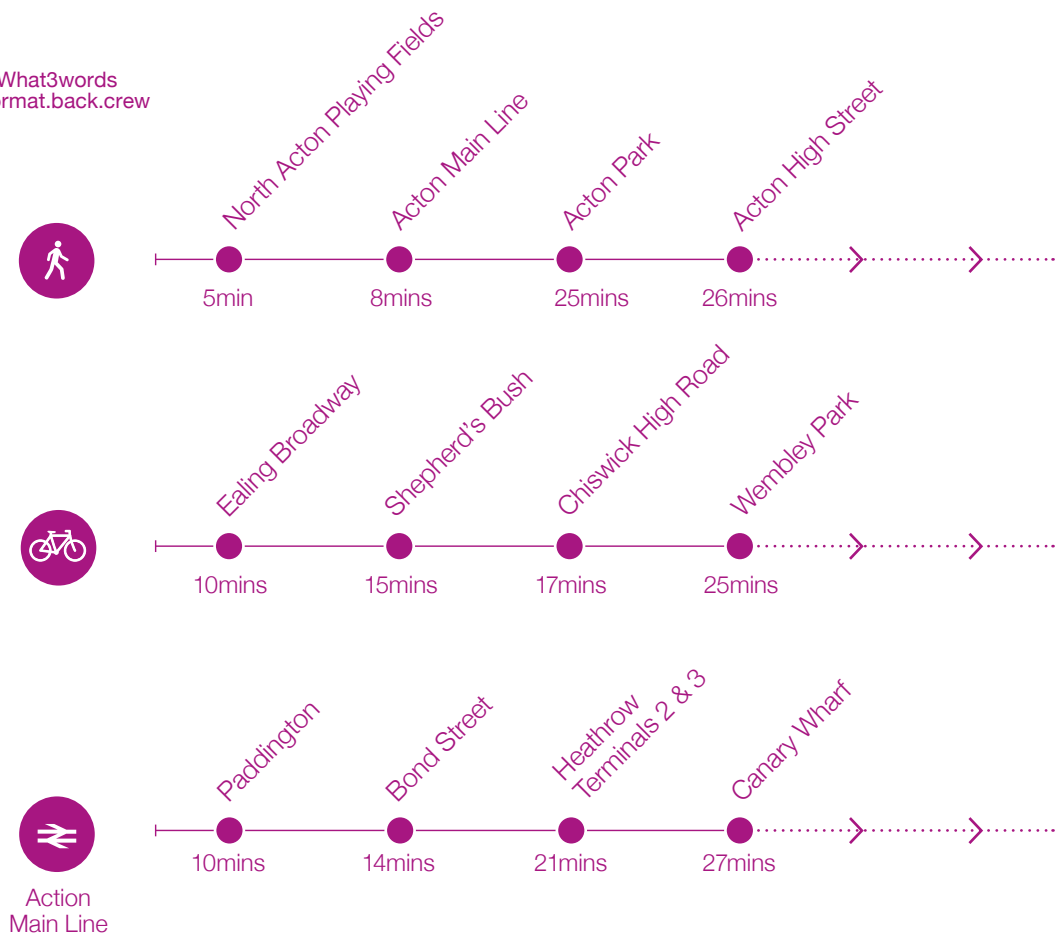
ODEON Luxe Acton offers a premium cinema experience with fully reclining seats and the latest blockbuster releases. A go-to destination for relaxed evenings and big-screen escapes in West London.

10 minutes

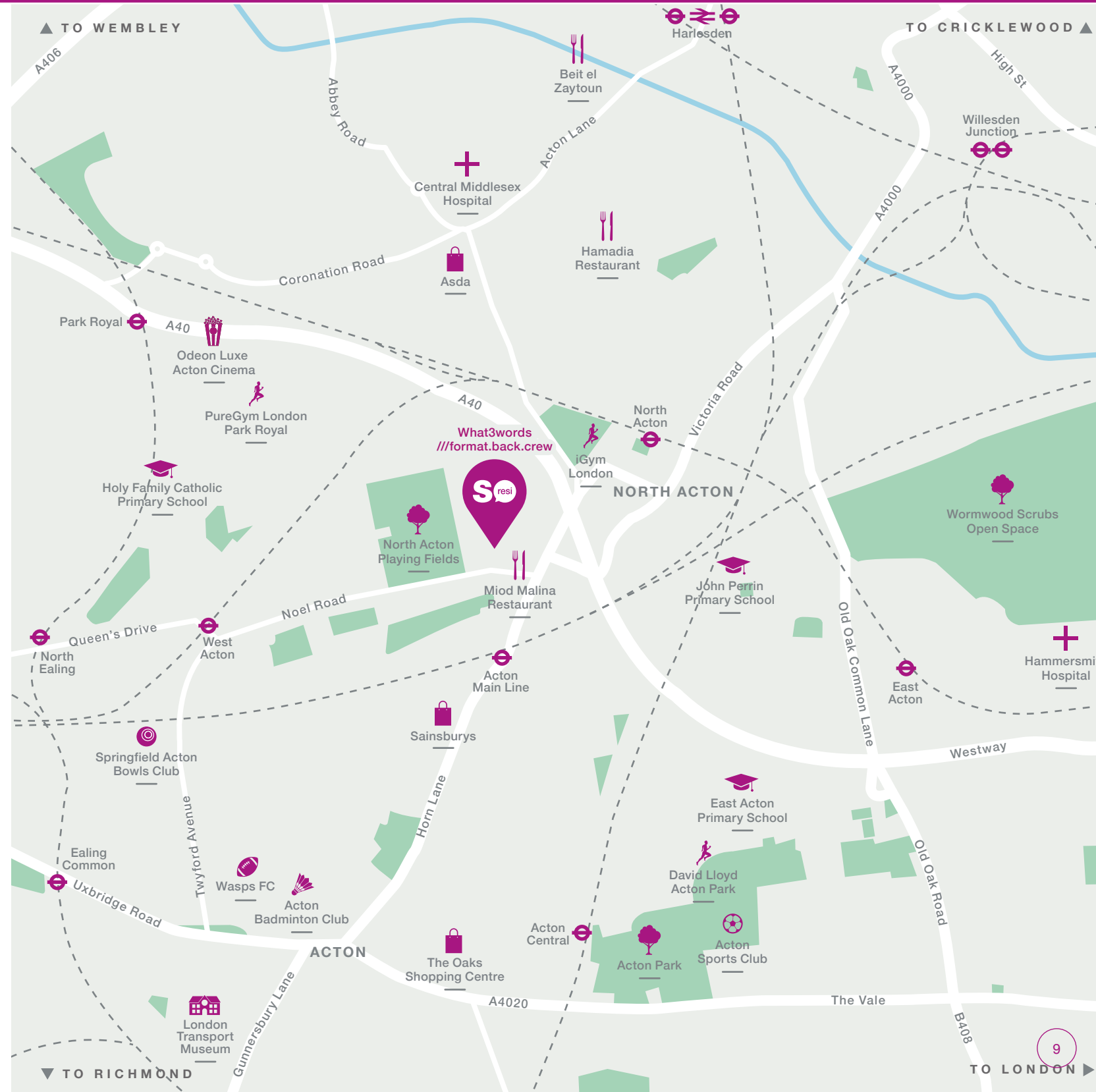
# Well connected

Perfectly placed for getting around London and beyond, SO Resi North Acton offers excellent connections. North Acton station is just a short walk away, with the Central Line taking you to Bond Street in under 20 minutes. Acton Main Line provides fast Elizabeth Line services to Paddington, the City, and Heathrow, while local bus routes and the nearby A40 make travel across West London and beyond quick and easy.

What3words  
///format.back.crew



Travel times are taken from Google and can vary depending on the time of day.



# The development



What3words  
///format.back.crew

SO Resi North Acton forms part of a thoughtfully planned new neighbourhood that brings together contemporary homes, landscaped public spaces and everyday amenities.

Designed to create a welcoming sense of place, the development balances modern architecture with green, open areas — offering residents a comfortable and well-connected setting to call home. With Shared Ownership apartments set within this wider community, SO Resi North Acton provides an affordable opportunity to be part of a carefully considered West London community.



The site layout is intended for illustrative purposes only and is subject to change.

Charming  
tree-lined  
walkways



These are computer-generated images and are for illustrative purposes only. Customers should not rely on these images.

# Residents' amenities

Thoughtfully designed shared amenities at SO Resi North Acton support everyday living and help create a welcoming sense of community.

A well-presented entrance lobby sets the tone on arrival, while the residents' lounge offers a comfortable space to relax, work or meet neighbours. A dedicated residents' gym makes it easy to fit wellbeing into your routine, and practical features such as a parcel store, secure bike storage and conveniently located bin stores ensure day-to-day life runs smoothly –all thoughtfully integrated into the development.





# Thoughtful interiors

Each apartment at SO Resi North Acton has been thoughtfully finished with modern living in mind. Contemporary kitchens with integrated appliances, stylish bathrooms and a carefully selected range of flooring and finishes come together to create interiors that feel calm, comfortable and easy to live in — a home designed to work beautifully, every day.

## General

- Elegant Amtico First Dutch Oak flooring through-out the hallway and storage areas
- Neutral-toned heavy-duty carpets in all bedrooms for ultimate comfort
- High-speed broadband connectivity for seamless living
- Exclusive access to a fully equipped residents' gym
- Dedicated concierge service available during select hours for convenience
- Master bedroom enhanced with a bespoke sliding mirrored wardrobe featuring soft-close doors
- Advanced audio-visual intercom system for secure access
- Mechanical Ventilation with Heat Recovery (MVHR) system in storage area providing limited space.
- Multi-sensor heat and smoke alarms for peace of mind
- CCTV coverage throughout landscaped areas for enhanced security

## Kitchen

- Designer Nobilia kitchens available in two sophisticated finishes: White or Indigo
- Luxurious Silestone worktops complemented by matching splashbacks
- Sleek, handleless door and drawer fronts for a contemporary aesthetic
- Ambient under-cabinet LED strip lighting for a refined atmosphere
- Integrated Electrolux appliances, including single fitted oven, ceramic hob, fridge freezer, and dishwasher

- Stainless steel sink with high-quality mixer tap
- Electrolux washer-dryer discreetly housed in hallway cupboard
- Energy-efficient LED spotlights for a modern, bright finish

## Bathroom & Ensuites

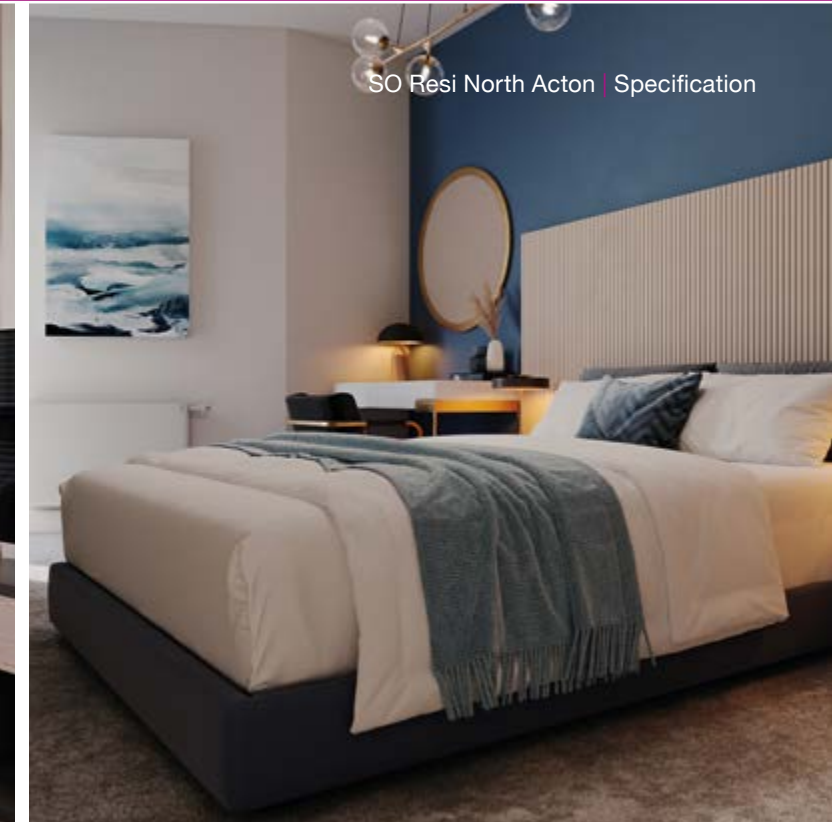
- Ensuite bathrooms featured in select residences
- Stylish bathroom suites with pristine white sanitaryware
- Neutral-toned ceramic wall and floor tiles for a timeless look
- Chrome-finish heated ladder towel rail for added luxury
- Full-height and width mirrors above washbasins in bathrooms and ensuites for a spacious feel

## External

- Secure cycle storage facilities for residents
- Private balcony for every apartment, complete with privacy screens and brushed stainless steel lighting
- Beautifully landscaped communal gardens and an exclusive roof terrace for relaxation

## Communal

- On-site concierge providing day-to-day assistance
- A comfortable residents' lounge for working, relaxing or socialising
- A fully equipped residents' gym for everyday fitness
- A shared roof terrace with seating and outdoor space
- A purpose-designed children's play area



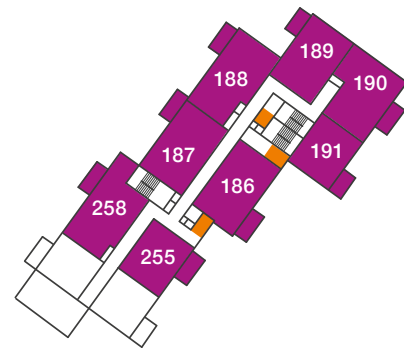
# Plot locator

Arranged across seven thoughtfully planned floors, each apartment has been designed to make the most of space, light and layout. Explore the homes available and discover the one that feels right for you.

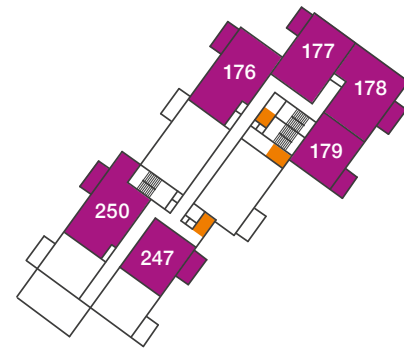
- Key**
- SO Resi
  - Lift



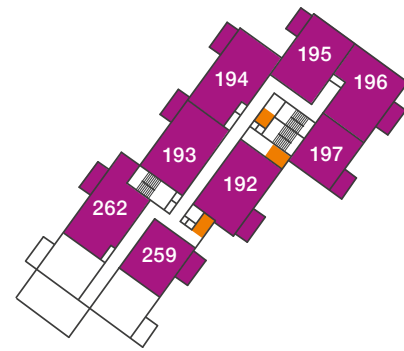
Floor 2



Floor 3



Floor 1



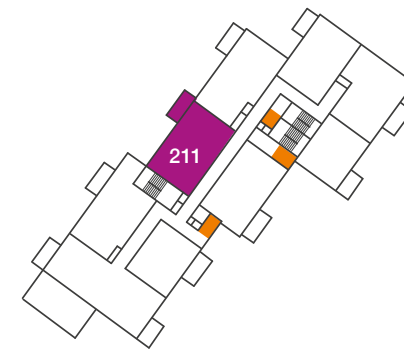
Floor 4



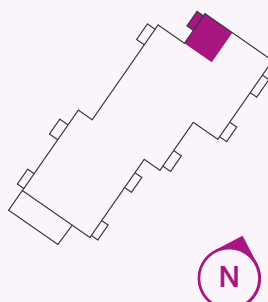
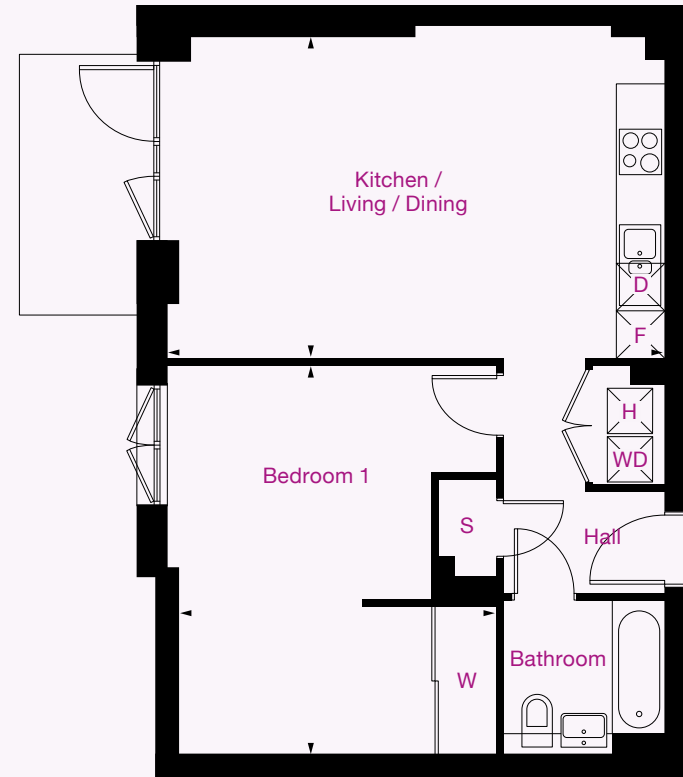
Floor 5



Floor 6



Floor 7



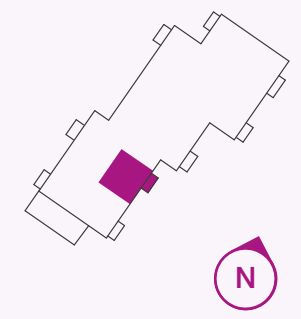
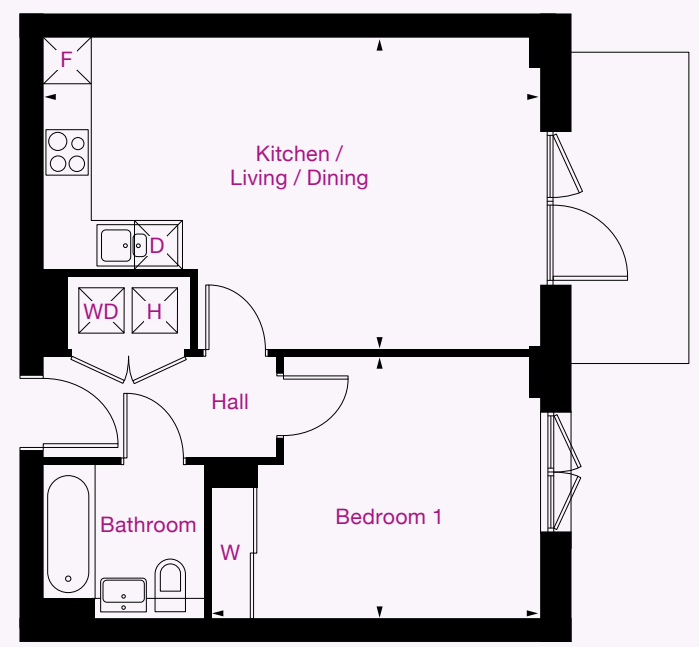
| Plots | Floor | Room                      | Metric      | Imperial         |
|-------|-------|---------------------------|-------------|------------------|
| 177   | 1     | Kitchen / Living / Dining | 6.6m x 4.2m | 21' 11" x 14'    |
| 183   | 2     | Bedroom 1                 | 5.1m x 4.3m | 16' 11" x 14' 4" |
| 189   | 3     | GIA                       | 63 sq m     | 677 sq ft        |
| 195   | 4     |                           |             |                  |
| 201   | 5     |                           |             |                  |
| 207   | 6     |                           |             |                  |

- S Storage
- W Wardrobe
- H Heat Interface Unit
- D Dishwasher
- F Fridge freezer
- WD Washer dryer

All floor plans in this brochure are for general guidance only. All room dimensions are subject to a plus/minus 5% tolerance. Measures are from plans and "as built" dimensions may vary. Any dimensions shown are not intended to be used for carpet sizes, appliances, spaces or items of furniture. These particulars do not constitute any part of an offer or contract.

Type 2

1 Bedroom Apartment



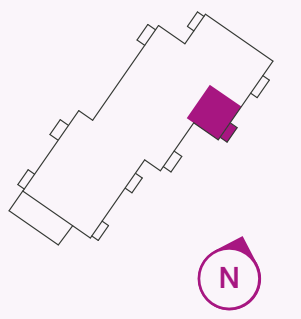
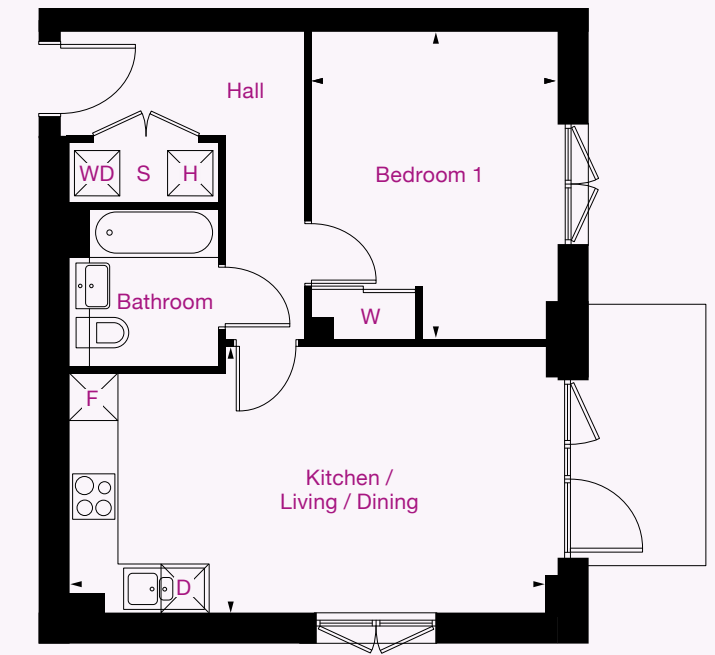
| Plots | Floor | Room                      | Metric      | Imperial         |
|-------|-------|---------------------------|-------------|------------------|
| 247   | 1     | Kitchen / Living / Dining | 6.6m x 4.1m | 21' 11" x 13' 7" |
| 251   | 2     | Bedroom 1                 | 4.3m x 3.4m | 14' 4" x 11' 5"  |
| 255   | 3     | GIA                       | 51 sq m     | 548 sq ft        |
| 259   | 4     |                           |             |                  |

- S Storage
- W Wardrobe
- H Heat Interface Unit
- D Dishwasher
- F Fridge freezer
- WD Washer dryer

All floor plans in this brochure are for general guidance only. All room dimensions are subject to a plus/minus 5% tolerance. Measures are from plans and "as built" dimensions may vary. Any dimensions shown are not intended to be used for carpet sizes, appliances, spaces or items of furniture. These particulars do not constitute any part of an offer or contract.

Type 3

1 Bedroom Apartment



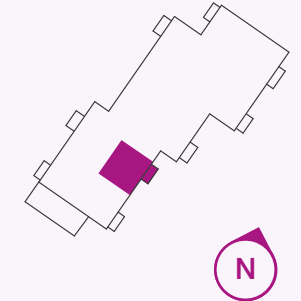
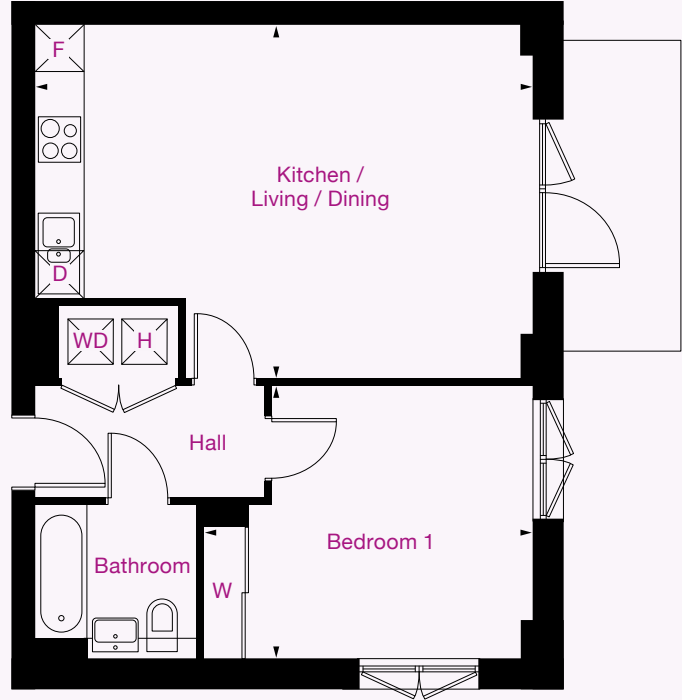
| Plots | Floor | Room                      | Metric      | Imperial        |
|-------|-------|---------------------------|-------------|-----------------|
| 179   | 1     | Kitchen / Living / Dining | 6.5m x 3.5m | 21' 7" x 11' 7" |
| 185   | 2     | Bedroom 1                 | 4m x 3.2m   | 13' 5" x 10' 9" |
| 191   | 3     | GIA                       | 50 sq m     | 539 sq ft       |
| 197   | 4     |                           |             |                 |
| 203   | 5     |                           |             |                 |

- S Storage
- W Wardrobe
- H Heat Interface Unit
- D Dishwasher
- F Fridge freezer
- WD Washer dryer

All floor plans in this brochure are for general guidance only. All room dimensions are subject to a plus/minus 5% tolerance. Measures are from plans and "as built" dimensions may vary. Any dimensions shown are not intended to be used for carpet sizes, appliances, spaces or items of furniture. These particulars do not constitute any part of an offer or contract.

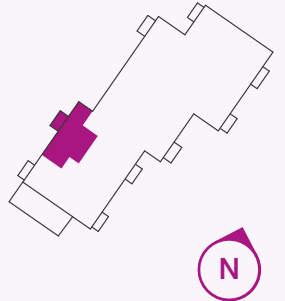
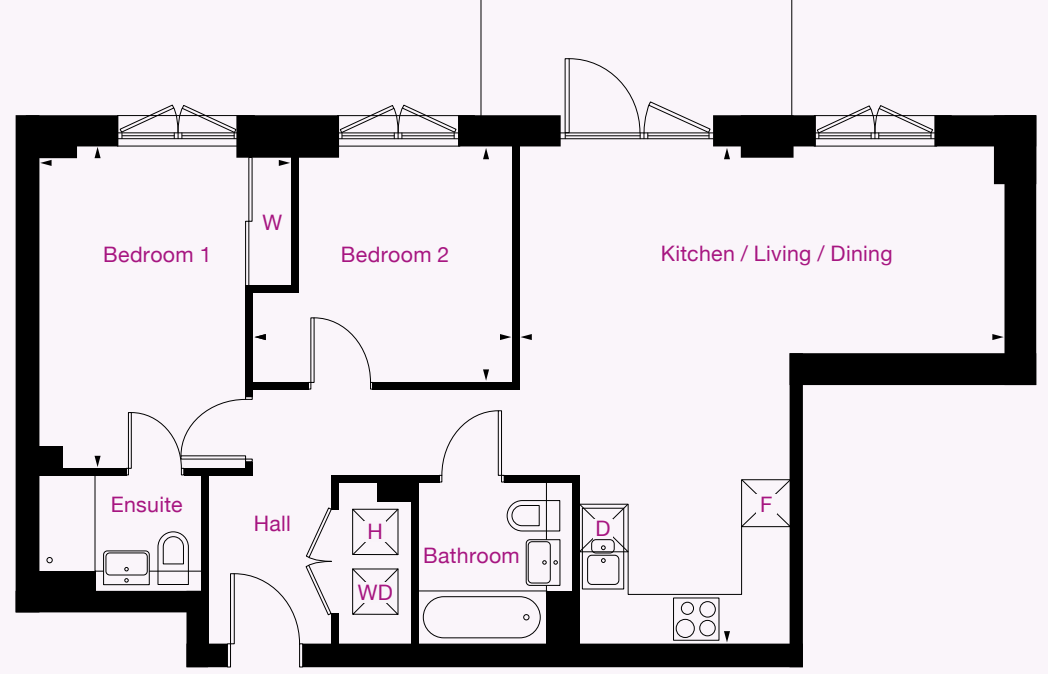
Type 4

1 Bedroom Apartment



Type 5

2 Bedroom Apartment



Plots 263  
Floor 5

| Room                      | Metric      | Imperial          |
|---------------------------|-------------|-------------------|
| Kitchen / Living / Dining | 6.6m x 4.6m | 21' 11" x 15' 5"  |
| Bedroom 1                 | 4.2m x 3.6m | 13' 10" x 11' 11" |
| GIA                       | 55 sq m     | 596 sq ft         |

- [S] Storage
- [W] Wardrobe
- [H] Heat Interface Unit
- [D] Dishwasher
- [F] Fridge freezer
- [WD] Washer dryer

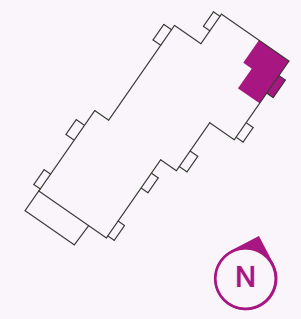
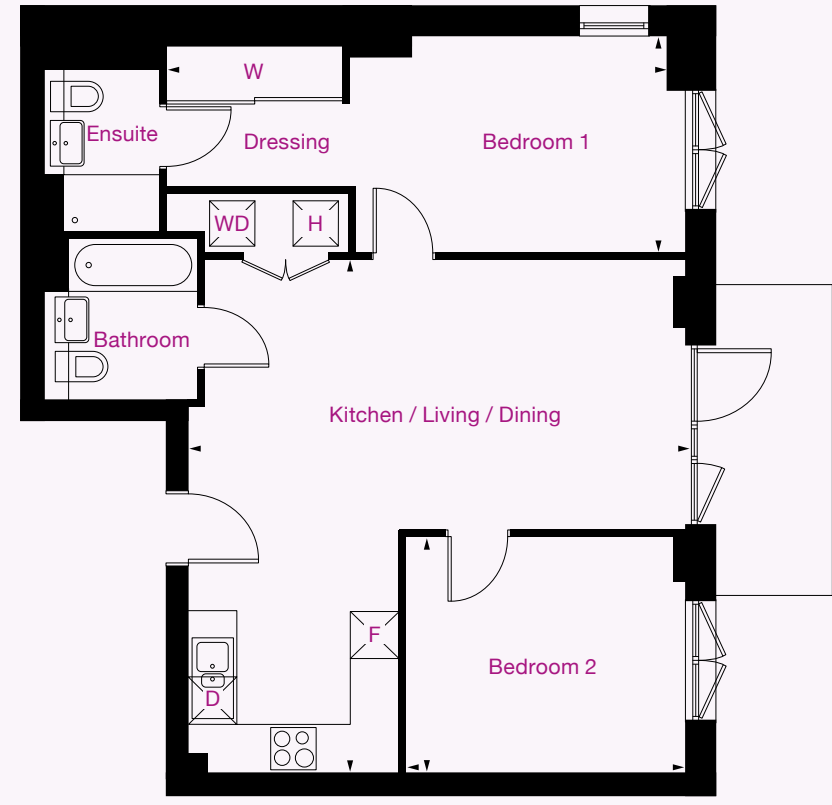
Plots 250, 254, 258, 262  
Floor 1, 2, 3, 4

| Room                      | Metric      | Imperial        |
|---------------------------|-------------|-----------------|
| Kitchen / Living / Dining | 6.4m x 3.5m | 21' 2" x 11' 9" |
| Bedroom 1                 | 4.2m x 3.3m | 14' x 11'       |
| Bedroom 2                 | 3.1m x 2.8m | 10' 4" x 9' 4"  |
| GIA                       | 72 sq m     | 772 sq ft       |

- [S] Storage
- [W] Wardrobe
- [H] Heat Interface Unit
- [D] Dishwasher
- [F] Fridge freezer
- [WD] Washer dryer

Type 6

2 Bedroom Apartment



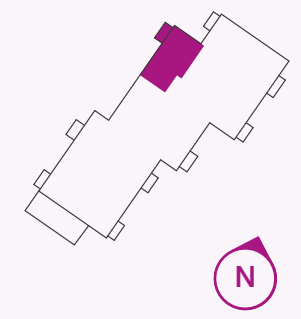
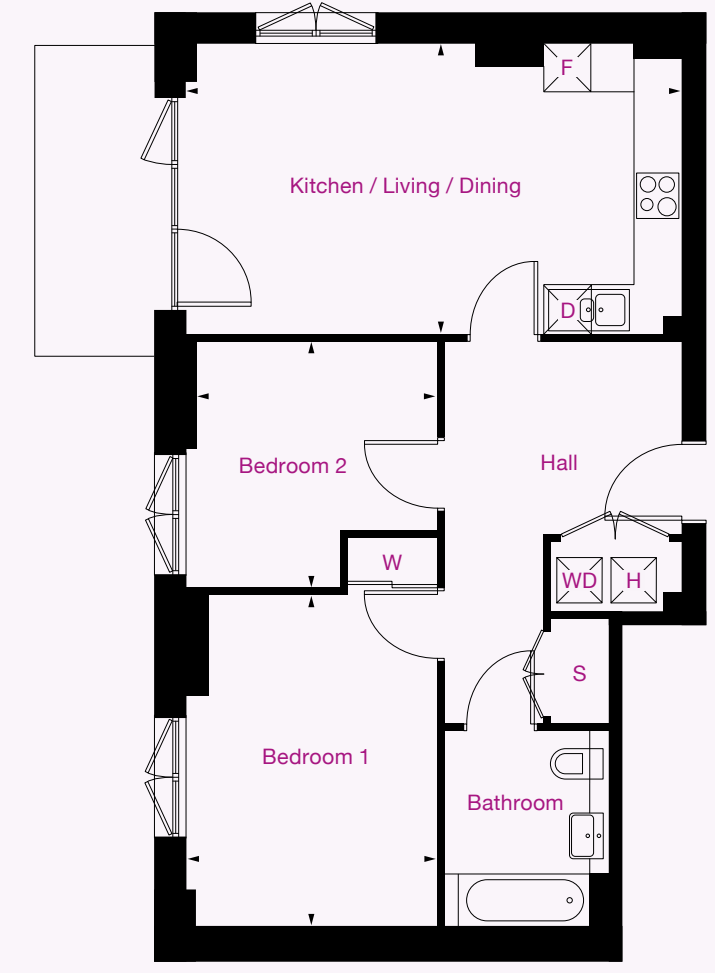
| Plots | Floor | Room                      | Metric      | Imperial        |
|-------|-------|---------------------------|-------------|-----------------|
| 178   | 1     | Kitchen / Living / Dining | 8.5m x 3.1m | 28' 2" x 10' 5" |
| 184   | 2     | Bedroom 1                 | 4.3m x 3.7m | 14' 4" x 12' 5" |
| 190   | 3     | Bedroom 2                 | 4.7m x 2.5m | 15' 8" x 8' 3"  |
| 196   | 4     | GIA                       | 73 sq m     | 781 sq ft       |
| 202   | 5     |                           |             |                 |
| 208   | 6     |                           |             |                 |

- S Storage
- W Wardrobe
- H Heat Interface Unit
- D Dishwasher
- F Fridge freezer
- WD Washer dryer

All floor plans in this brochure are for general guidance only. All room dimensions are subject to a plus/minus 5% tolerance. Measures are from plans and "as built" dimensions may vary. Any dimensions shown are not intended to be used for carpet sizes, appliances, spaces or items of furniture. These particulars do not constitute any part of an offer or contract.

Type 7

2 Bedroom Apartment



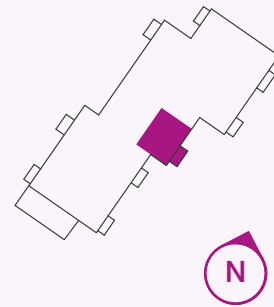
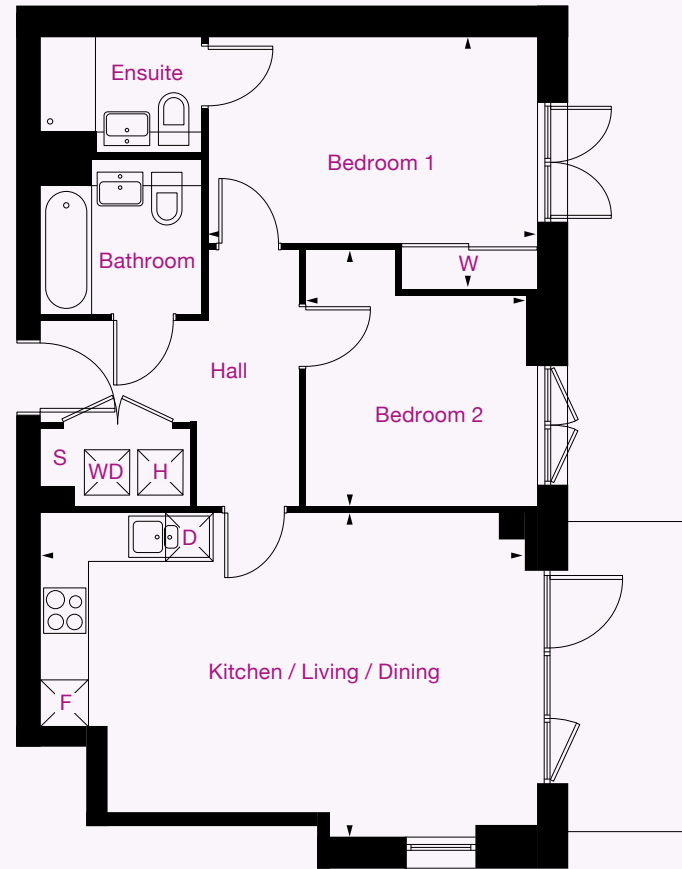
| Plots | Floor | Room                      | Metric      | Imperial         |
|-------|-------|---------------------------|-------------|------------------|
| 176   | 1     | Kitchen / Living / Dining | 6.6m x 3.8m | 21' 11" x 12' 8" |
| 182   | 2     | Bedroom 1                 | 4.4m x 3.3m | 14' 5" x 11'     |
| 188   | 3     | Bedroom 2                 | 3.2m x 3.2m | 10' 8" x 10' 6"  |
| 194   | 4     | GIA                       | 73 sq m     | 784 sq ft        |
| 200   | 5     |                           |             |                  |
| 206   | 6     |                           |             |                  |

- S Storage
- W Wardrobe
- H Heat Interface Unit
- D Dishwasher
- F Fridge freezer
- WD Washer dryer

All floor plans in this brochure are for general guidance only. All room dimensions are subject to a plus/minus 5% tolerance. Measures are from plans and "as built" dimensions may vary. Any dimensions shown are not intended to be used for carpet sizes, appliances, spaces or items of furniture. These particulars do not constitute any part of an offer or contract.

Type 8

2 Bedroom Apartment



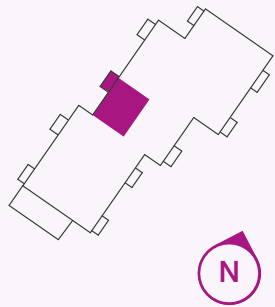
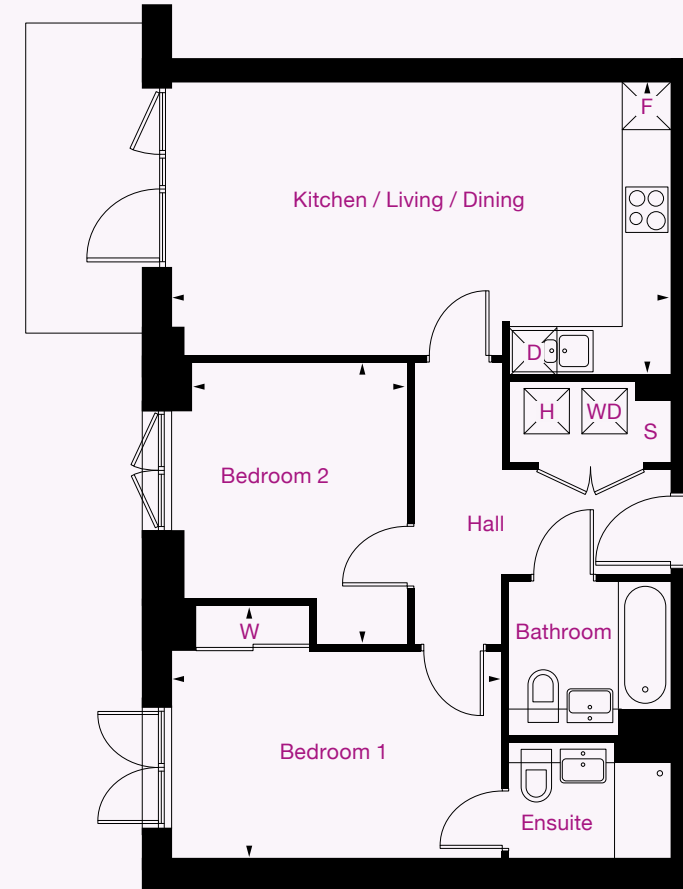
| Plots | Floor | Room                      | Metric      | Imperial         |
|-------|-------|---------------------------|-------------|------------------|
| 180   | 2     | Kitchen / Living / Dining | 6.6m x 3.9m | 21' 11" x 13' 1" |
| 186   | 3     | Bedroom 1                 | 4.3m x 2.7m | 14' 4" x 9'      |
| 192   | 4     | Bedroom 2                 | 3.1m x 3m   | 10' 3" x 10'     |
| 198   | 5     | GIA                       | 68 sq m     | 728 sq ft        |
| 204   | 6     |                           |             |                  |

- S Storage
- W Wardrobe
- H Heat Interface Unit
- D Dishwasher
- F Fridge freezer
- WD Washer dryer

All floor plans in this brochure are for general guidance only. All room dimensions are subject to a plus/minus 5% tolerance. Measures are from plans and "as built" dimensions may vary. Any dimensions shown are not intended to be used for carpet sizes, appliances, spaces or items of furniture. These particulars do not constitute any part of an offer or contract.

Type 9

2 Bedroom Apartment



| Plots | Floor | Room                      | Metric      | Imperial        |
|-------|-------|---------------------------|-------------|-----------------|
| 181   | 2     | Kitchen / Living / Dining | 6.6m x 3.6m | 22' x 11' 11"   |
| 187   | 3     | Bedroom 1                 | 4.3m x 2.7m | 14' 4" x 9'     |
| 193   | 4     | Bedroom 2                 | 3.1m x 3.1m | 10' 3" x 10' 3" |
| 199   | 5     | GIA                       | 68 sq m     | 731 sq ft       |
| 205   | 6     |                           |             |                 |
| 211   | 7     |                           |             |                 |

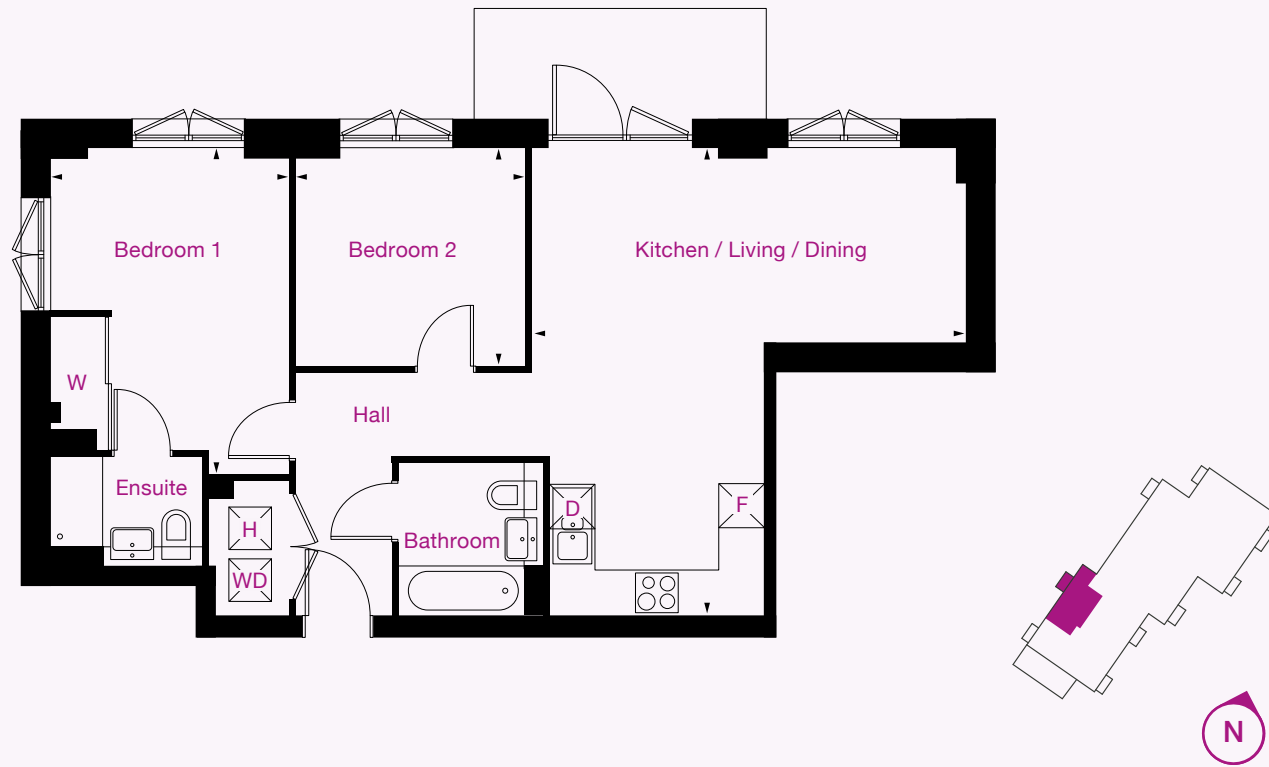
- S Storage
- W Wardrobe
- H Heat Interface Unit
- D Dishwasher
- F Fridge freezer
- WD Washer dryer

All floor plans in this brochure are for general guidance only. All room dimensions are subject to a plus/minus 5% tolerance. Measures are from plans and "as built" dimensions may vary. Any dimensions shown are not intended to be used for carpet sizes, appliances, spaces or items of furniture. These particulars do not constitute any part of an offer or contract.

Type 10

2 Bedroom  
Apartment

## Notes



| Plots | Floor | Room                      | Metric      | Imperial         |
|-------|-------|---------------------------|-------------|------------------|
| 264   | 5     | Kitchen / Living / Dining | 6.6m x 6.1m | 21' 11" x 20' 3" |
| 266   | 6     | Bedroom 1                 | 4.2m x 3.3m | 14' x 11' 1"     |
|       |       | Bedroom 2                 | 3.2m x 3m   | 10' 7" x 10' 2"  |
|       |       | GIA                       | 73 sq m     | 781 sq ft        |

- S Storage
- W Wardrobe
- H Heat Interface Unit
- D Dishwasher
- F Fridge freezer
- WD Washer dryer



**With SO Resi, you buy your own home in your own way. You start with a share that's right for you, then you can buy extra shares over time, so it's all manageable and suits your income.**

You start by buying between 25% and 75% of your SO Resi home. That means your monthly mortgage payments and deposit are smaller than they would be if you bought your home outright. There are two other monthly payments for your SO Resi home. One is the SO Resi payment for the share of your home that Metropolitan Thames Valley owns. The other is the service charge, which pays to look after the building you live in. There are also the usual other costs, like household utility bills. You can choose to buy a bigger share of your SO Resi home in the future, and even own 100%. The bigger the share you own, the lower your SO Resi payment will be.

**You can sell your share at any time if you decide to move on.**

**We're here to help**

Whatever your needs, we're on hand to help at every stage. First we'll help you understand all the costs and work out what's affordable for you. If you decide to go ahead, we'll be there to answer your questions. And in the future, we can help you with buying a bigger share of your home, or with selling up if it's time for a change.

**Tel: 0208 607 0550**  
**Email [sales@soresi.co.uk](mailto:sales@soresi.co.uk)**  
**or visit [soresi.co.uk](http://soresi.co.uk)**

MTVH has taken all reasonable care in the preparation of the information given in this brochure. However, this information is subject to change and has been prepared solely for the purpose of providing general guidance. MTVH does not warrant the accuracy or completeness of this information. Particulars are given for illustrative purposes only. MTVH undertakes continuous product development and any information given relating to our products may vary from time to time. The information and particulars set out within this brochure do not constitute part of a formal offer invitation or contract to acquire the relevant property. For the reasons mentioned above, no information contained in this brochure is to be relied upon. In particular, all plans prospectus, descriptions, dimensions and measurements are approximate and provided for guidance only. Such information is given without responsibility on the part of MTVH.