



**DAGENHAM**  
**GREEN** LDN

**Shared  
Ownership  
Edition**

**Floorplans The Madison**

 **Peabody**

Computer generated illustration is indicative only

# The Madison



Computer generated image is indicative only



## The natural place to call home

Welcome to The Madison, Dagenham Green. Perfectly positioned on the edge of The Green and The Boardwalk, just moments from Dagenham Dock station and the vibrant Assembly Square.

The Madison features a landscaped podium garden and offers the best of connected living. It's also home to The Pavilion, where you'll benefit from a range of amenities including a dedicated concierge, work hub and screening room.

Nestled amongst idyllic green space and well connected to the City, this stylish collection of 1, 2 & 3-bedroom apartments is part of a vibrant new community providing you with everything you need for a healthier life in 15 minutes. With its nature inspired landscape, bustling market square and variety of amenities for work, rest or play; this is London village living at its best, presenting the perfect opportunity to own your own home in a thriving area with a bright future.

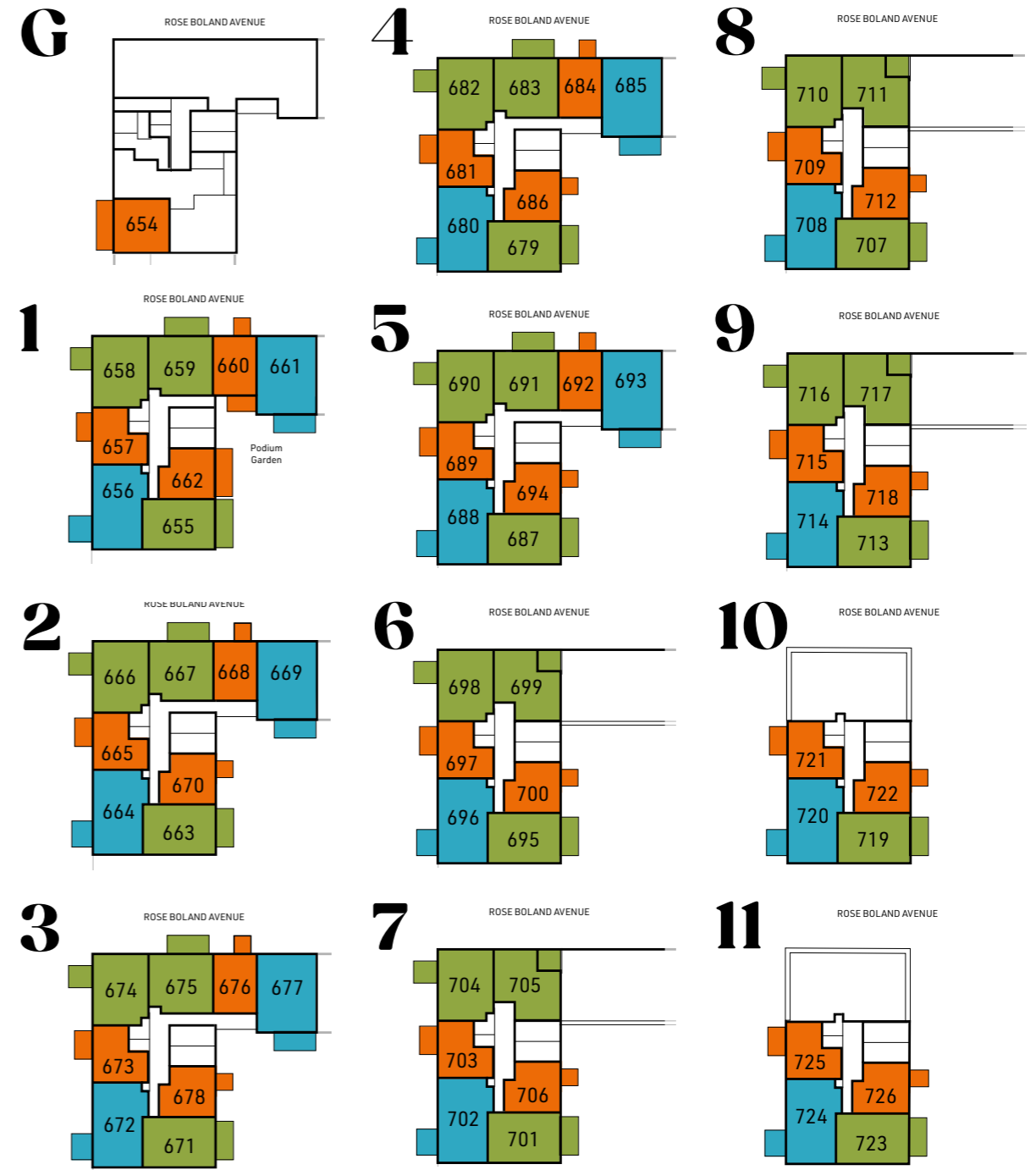


# Site Plan

# Apartment Locators



■ 1 bed ■ 2 bed ■ 3 bed



# One-Bed

Apartments 668, 676, 684, 692

Gross Internal Floor Area 50.90 m<sup>2</sup> / 547.87 ft<sup>2</sup>

Kitchen/Living/Dining	3.1m x 7.8m	10'3" x 25'10"
Bedroom	3.3m x 4.0m	10'9" x 13'3"
Bathroom	2.0m x 2.1m	6'8" x 7'1"
Balcony	2.3m x 2.2m	7'9" x 7'2"

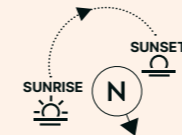
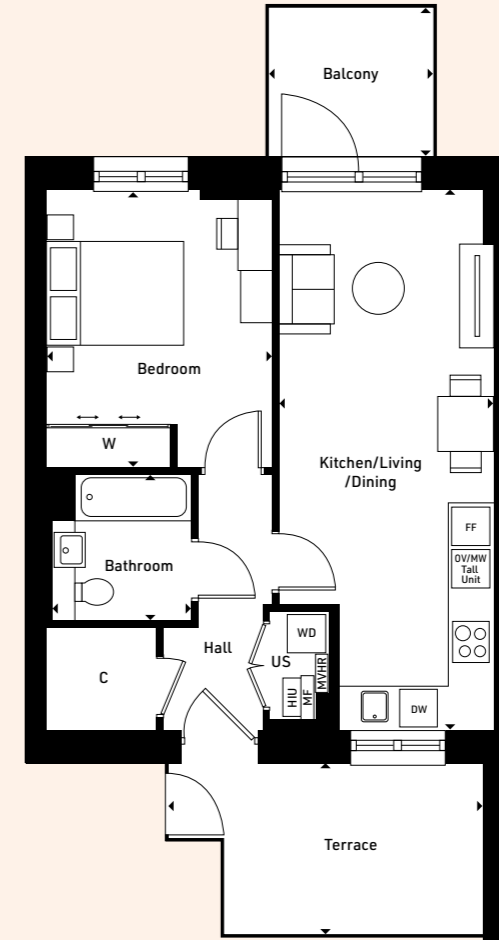
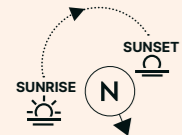
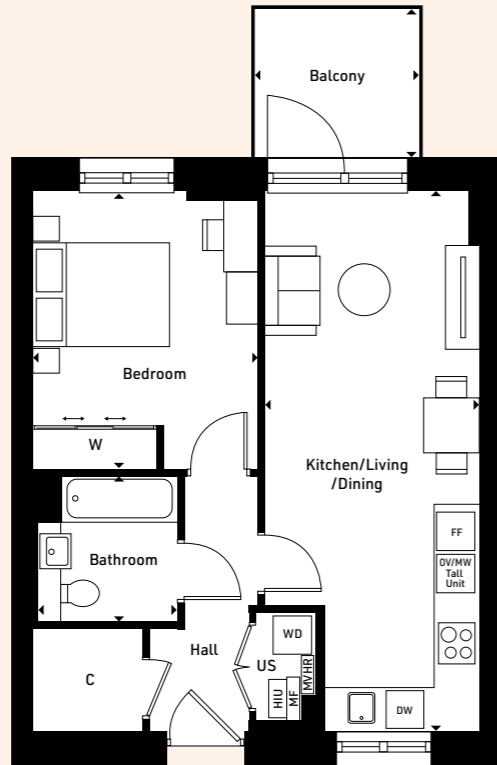


# One-Bed

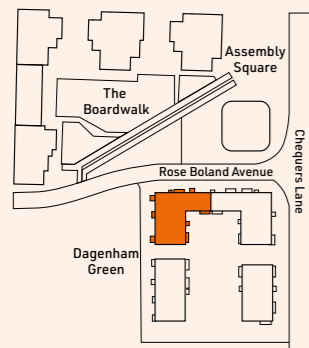
Apartment 660

Gross Internal Floor Area 50.90 m<sup>2</sup> / 547.87 ft<sup>2</sup>

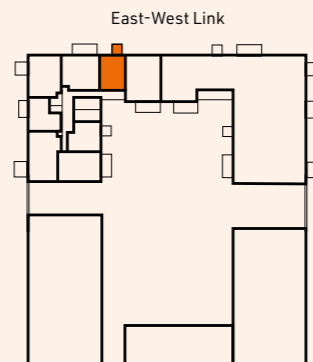
Kitchen/Living/Dining	3.1m x 7.8m	10'3" x 25'10"
Bedroom	3.3m x 4.0m	10'9" x 13'3"
Bathroom	2.0m x 2.1m	6'8" x 7'1"
Terrace	4.6m x 2.5m	15'1" x 8'3"
Balcony	2.3m x 2.2m	7'9" x 7'2"



Site



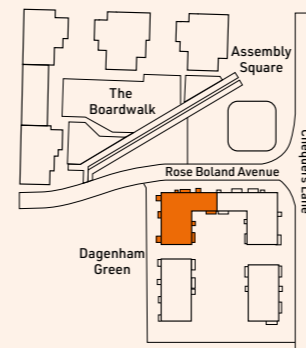
Plot



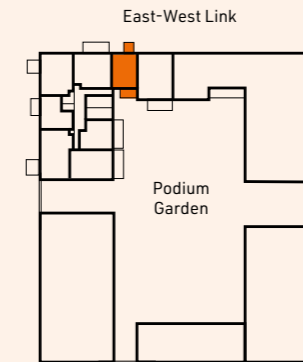
Floor

- 2** Apartment 668
- 3** Apartment 676
- 4** Apartment 684
- 5** Apartment 692

Site



Plot



Floor

- 1** Apartment 660

X - Lift | C - Cupboard | W - Built-in wardrobe | [W] Space for Wardrobe | FF - Fridge/Freezer | DW - Dishwasher | WD - Washer Dryer | OV - Oven  
MW - Microwave | US - Utility Store | MF - Manifold | HIU - Heat Interface Unit | MVHR - Mechanical Ventilation with Heat Recovery

X - Lift | C - Cupboard | W - Built-in wardrobe | [W] Space for Wardrobe | FF - Fridge/Freezer | DW - Dishwasher | WD - Washer Dryer | OV - Oven  
MW - Microwave | US - Utility Store | MF - Manifold | HIU - Heat Interface Unit | MVHR - Mechanical Ventilation with Heat Recovery

# One-Bed

Apartments 721, 725

Gross Internal Floor Area 51.04 m<sup>2</sup> / 549.35 ft<sup>2</sup>

Kitchen/Living/Dining	4.9m x 4.5m	16'0" x 14'9"
Bedroom	3.3m x 3.5m	10'11" x 11'8"
Bathroom	2.0m x 2.1m	6'8" x 7'1"
Balcony	1.5m x 3.5m	5'0" x 11'5"

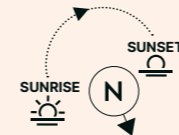
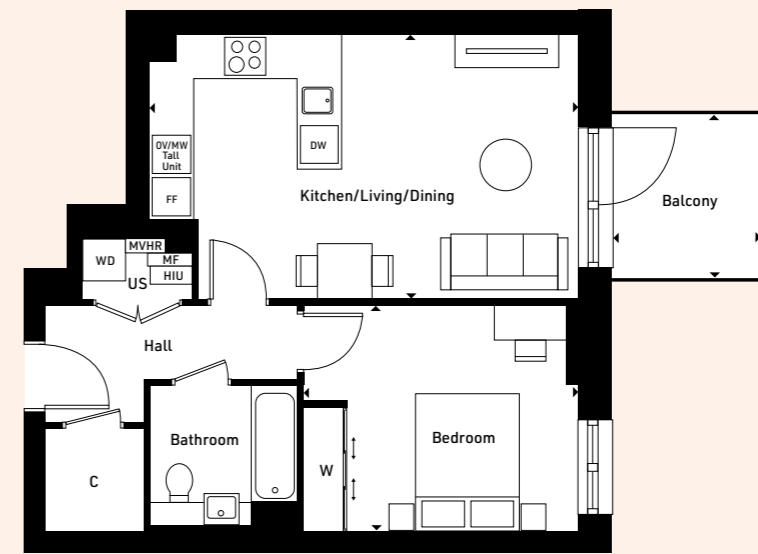
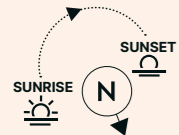
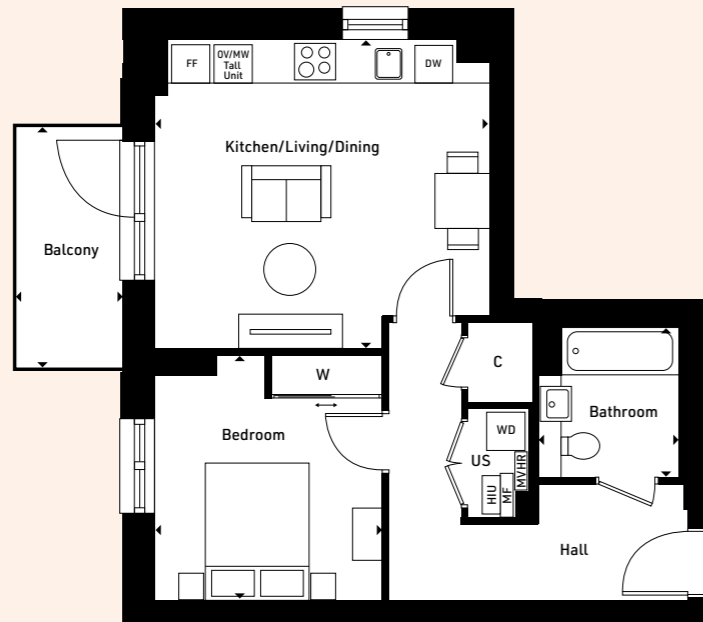


# One-Bed

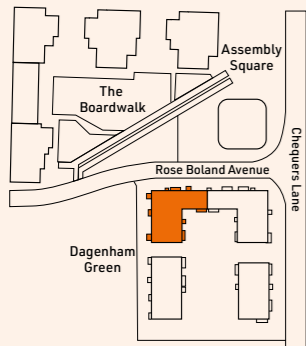
Apartments 670, 678, 686, 694,  
700, 706, 712, 718, 722, 726

Gross Internal Floor Area 51.04 m<sup>2</sup> / 549.35 ft<sup>2</sup>

Kitchen/Living/Dining	6.2m x 3.8m	20'6" x 12'7"
Bedroom	4.0m x 3.3m	13'1" x 10'9"
Bathroom	2.1m x 2.0m	7'1" x 6'8"
Balcony	2.2m x 2.3m	7'2" x 7'9"

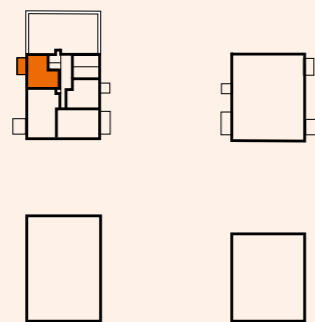


## Site



## Plot

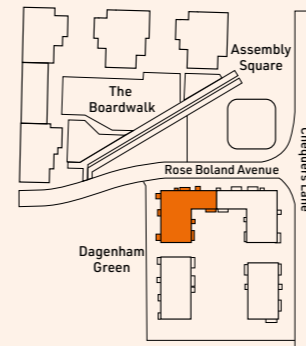
East-West Link



## Floor

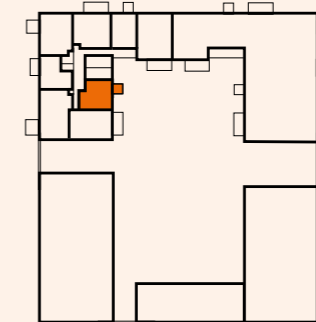
- 10** Apartment 721
- 11** Apartment 725

## Site



## Plot

East-West Link



## Floor

- 2** Apartment 670
- 3** Apartment 678
- 4** Apartment 686
- 5** Apartment 694
- 6** Apartment 700
- 7** Apartment 706
- 8** Apartment 712
- 9** Apartment 718
- 10** Apartment 722
- 11** Apartment 726

X - Lift | C - Cupboard | W - Built-in wardrobe | [W] Space for Wardrobe | FF - Fridge/Freezer | DW - Dishwasher | WD - Washer Dryer | OV - Oven  
MW - Microwave | US - Utility Store | MF - Manifold | HIU - Heat Interface Unit | MVHR - Mechanical Ventilation with Heat Recovery

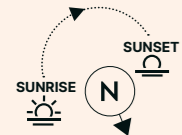
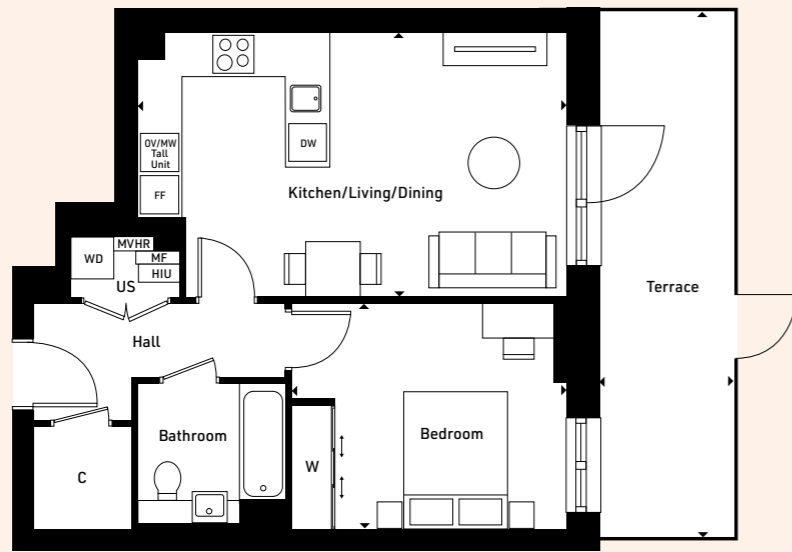
X - Lift | C - Cupboard | W - Built-in wardrobe | [W] Space for Wardrobe | FF - Fridge/Freezer | DW - Dishwasher | WD - Washer Dryer | OV - Oven  
MW - Microwave | US - Utility Store | MF - Manifold | HIU - Heat Interface Unit | MVHR - Mechanical Ventilation with Heat Recovery

# One-Bed

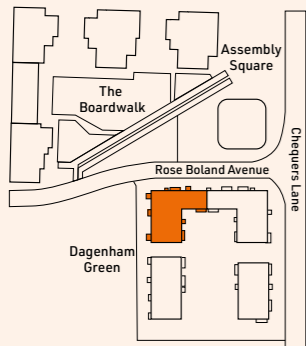
Apartment 662

Gross Internal Floor Area 51.04 m<sup>2</sup> / 549.35 ft<sup>2</sup>

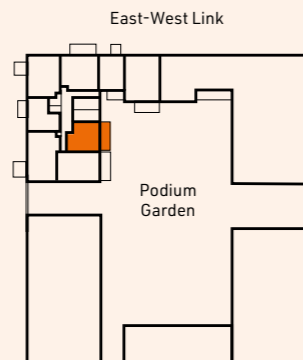
Kitchen/Living/Dining	6.2m x 3.8m	20'6" x 12'7"
Bedroom	4.0m x 3.3m	13'1" x 10'9"
Bathroom	2.1m x 2.0m	7'1" x 6'8"
Terrace	1.8m x 7.7m	6'0" x 25'3"



Site



Plot



1 Apartment 662

Floor

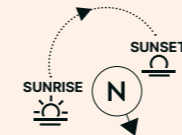
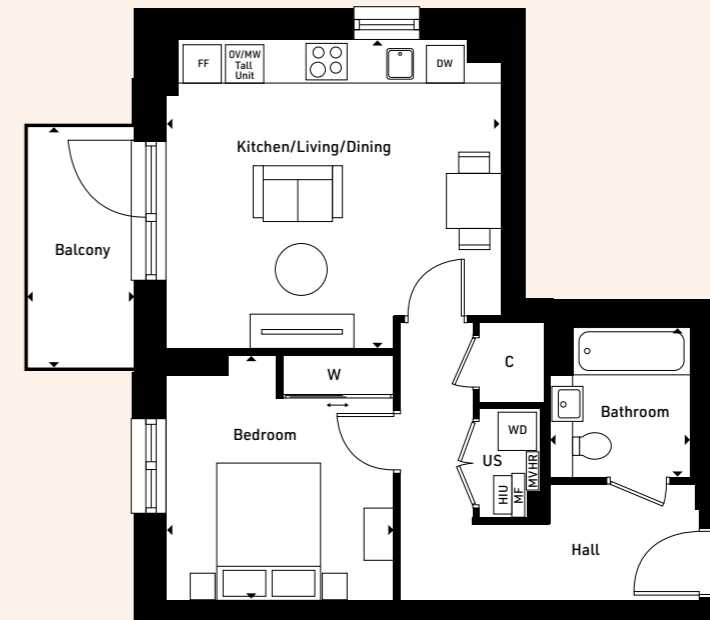
X - Lift | C - Cupboard | W - Built-in wardrobe | [W] Space for Wardrobe | FF - Fridge/Freezer | DW - Dishwasher | WD - Washer Dryer | OV - Oven  
MW - Microwave | US - Utility Store | MF - Manifold | HIU - Heat Interface Unit | MVHR - Mechanical Ventilation with Heat Recovery

# One-Bed

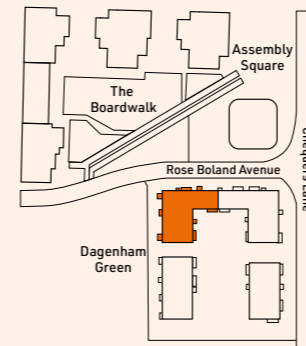
Apartments 657, 665, 673, 681,  
689, 697, 703, 709, 715

Gross Internal Floor Area 51.13 m<sup>2</sup> / 550.32 ft<sup>2</sup>

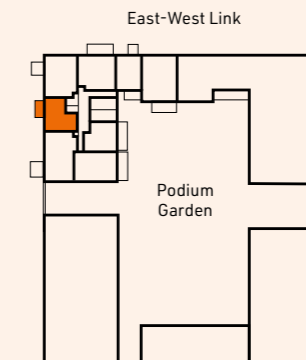
Kitchen/Living/Dining	4.9m x 4.5m	16'0" x 14'10"
Bedroom	3.3m x 3.5m	10'11" x 11'8"
Bathroom	2.0m x 2.1m	6'8" x 7'1"
Balcony	1.5m x 3.5m	5'0" x 11'5"



Site



Plot



1 Apartment 657  
2 Apartment 665  
3 Apartment 673  
4 Apartment 681  
5 Apartment 689  
6 Apartment 697  
7 Apartment 703  
8 Apartment 709  
9 Apartment 715

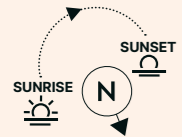
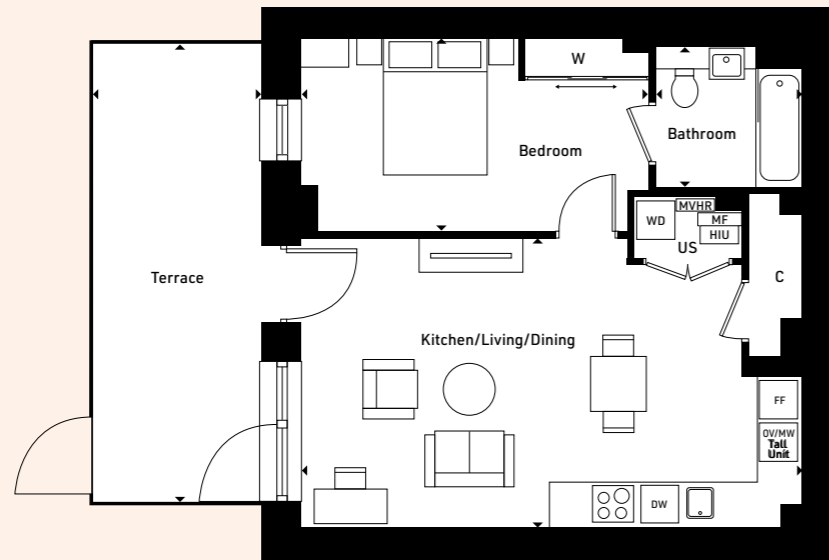
X - Lift | C - Cupboard | W - Built-in wardrobe | [W] Space for Wardrobe | FF - Fridge/Freezer | DW - Dishwasher | WD - Washer Dryer | OV - Oven  
MW - Microwave | US - Utility Store | MF - Manifold | HIU - Heat Interface Unit | MVHR - Mechanical Ventilation with Heat Recovery

# One-Bed

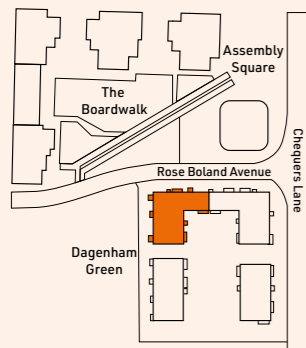
Apartment 654

Gross Internal Floor Area 51.85 m<sup>2</sup> / 588.15 ft<sup>2</sup>

Kitchen/Living/Dining	7.3m x 4.2m	26'5" x 12'4"
Bedroom	5.0m x 2.8m	19'3" x 10'1"
Bathroom	2.1m x 2.0m	7'1" x 7'1"
Terrace	2.4m x 6.6m	8'0" x 21'8"

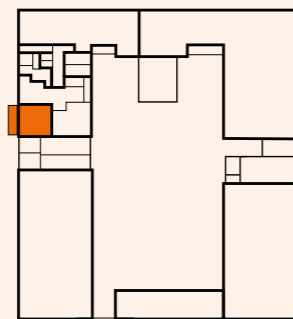


Site



Plot

East-West Link



Floor

**Gnd** Apartment 654

X - Lift | C - Cupboard | W - Built-in wardrobe | [W] Space for Wardrobe | FF - Fridge/Freezer | DW - Dishwasher | WD - Washer Dryer | OV - Oven  
 MW - Microwave | US - Utility Store | MF - Manifold | HIU - Heat Interface Unit | MVHR - Mechanical Ventilation with Heat Recovery

# Two-Bed Apartments



# Two-Bed

Apartments 659, 667, 675, 683, 691

Gross Internal Floor Area 69.92 m<sup>2</sup> / 752.60 ft<sup>2</sup>

Kitchen/Living/Dining	3.3m x 7.8m	10'9" x 25'6"
Principal Bedroom	2.7m x 6.3m	9'1" x 20'8"
Bedroom 2	3.0m x 4.6m	9'10" x 15'1"
Bathroom	2.0m x 2.1m	6'8" x 7'1"
Balcony	5.9m x 1.5m	19'7" x 5'0"

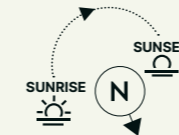
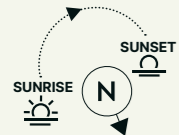
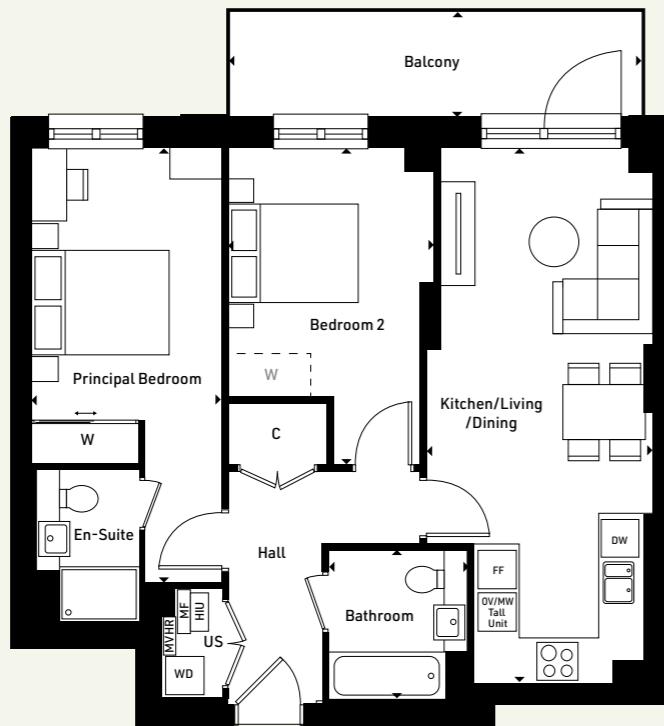


# Two-Bed

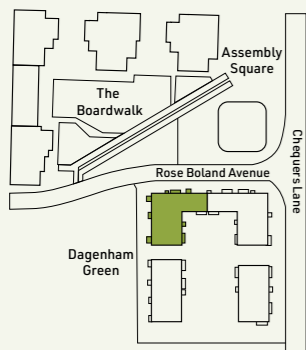
Apartments 699, 705, 711, 717

Gross Internal Floor Area 71.3m<sup>2</sup> / 767.46 ft<sup>2</sup>

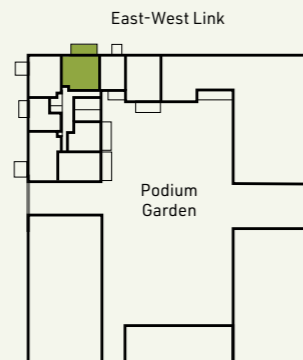
Kitchen/Living/Dining	3.1m x 6.5m	10'5" x 21'4"
Principal Bedroom	2.9m x 5.5m	9'5" x 18'1"
Bedroom 2	2.8m x 4.6m	9'2" x 15'2"
Bathroom	2.0m x 2.1m	6'8" x 7'1"
Balcony	2.6m x 2.4m	8'9" x 8'0"



## Site



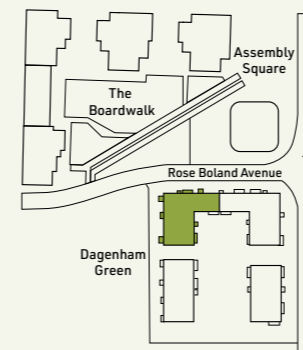
## Plot



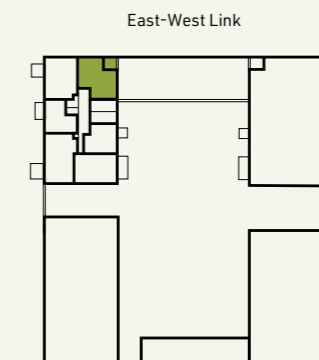
## Floor

- 1 Apartment 659
- 2 Apartment 667
- 3 Apartment 675
- 4 Apartment 683
- 5 Apartment 691

## Site



## Plot



## Floor

- 6 Apartment 699
- 7 Apartment 705
- 8 Apartment 711
- 9 Apartment 717

X - Lift | C - Cupboard | W - Built-in wardrobe | [W] Space for Wardrobe | FF - Fridge/Freezer | DW - Dishwasher | WD - Washer Dryer | OV - Oven  
MW - Microwave | US - Utility Store | MF - Manifold | HIU - Heat Interface Unit | MVHR - Mechanical Ventilation with Heat Recovery

X - Lift | C - Cupboard | W - Built-in wardrobe | [W] Space for Wardrobe | FF - Fridge/Freezer | DW - Dishwasher | WD - Washer Dryer | OV - Oven  
MW - Microwave | US - Utility Store | MF - Manifold | HIU - Heat Interface Unit | MVHR - Mechanical Ventilation with Heat Recovery

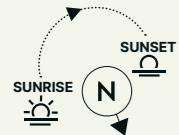
# Two-Bed

Apartments 663, 671, 679, 687,  
695, 701, 707, 713, 719, 723

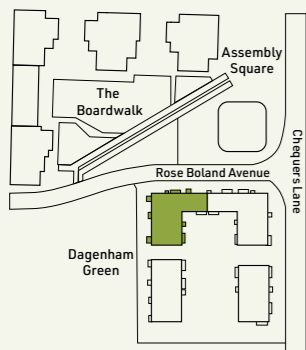


Gross Internal Floor Area 70.71 m<sup>2</sup> / 761.16 ft<sup>2</sup>

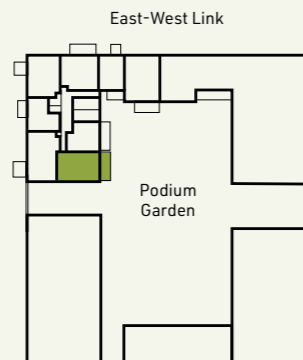
Kitchen/Living/Dining	6.6m x 3.5m	21'11" x 11'6"
Principal Bedroom	3.8m x 3.4m	12'6" x 11'1"
Bedroom 2	3.4m x 3.4m	11'2" x 11'2"
Bathroom	2.0m x 2.1m	6'8" x 7'1"
Balcony	1.5m x 5.5m	5'0" x 18'1"



## Site



## Plot



## Floor

<b>1</b>	Apt 655	<b>7</b>	Apt 701
<b>2</b>	Apt 663	<b>8</b>	Apt 707
<b>3</b>	Apt 671	<b>9</b>	Apt 713
<b>4</b>	Apt 679	<b>10</b>	Apt 719
<b>5</b>	Apt 687	<b>11</b>	Apt 723
<b>6</b>	Apt 695		

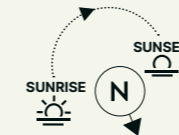
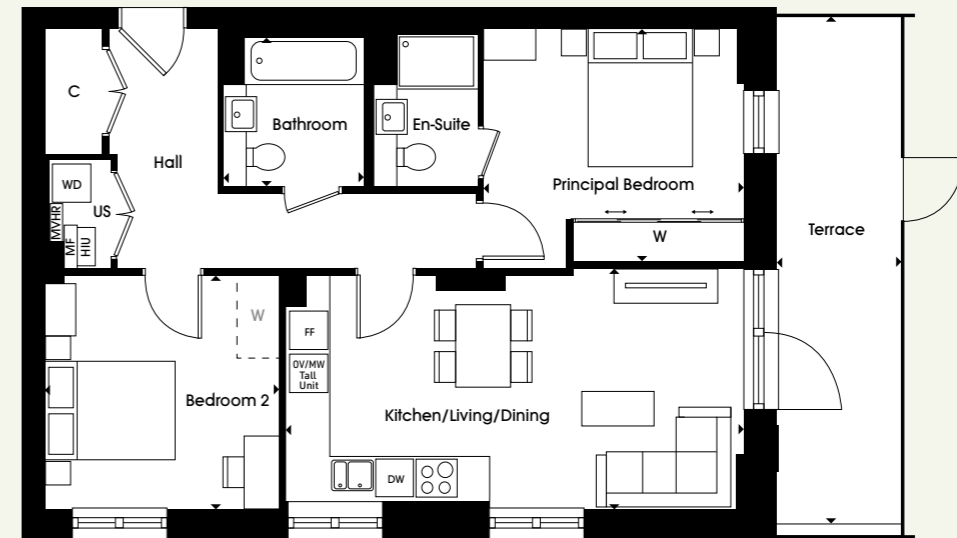
X - Lift | C - Cupboard | W - Built-in wardrobe | [W] Space for Wardrobe | FF - Fridge/Freezer | DW - Dishwasher | WD - Washer Dryer | OV - Oven  
MW - Microwave | US - Utility Store | MF - Manifold | HIU - Heat Interface Unit | MVHR - Mechanical Ventilation with Heat Recovery

# Two-Bed

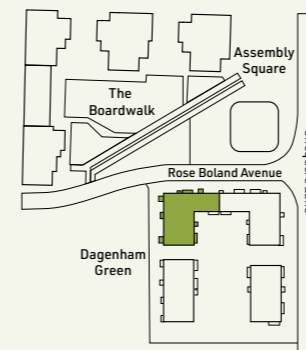
Apartment 655

Gross Internal Floor Area 70.71 m<sup>2</sup> / 761.16 ft<sup>2</sup>

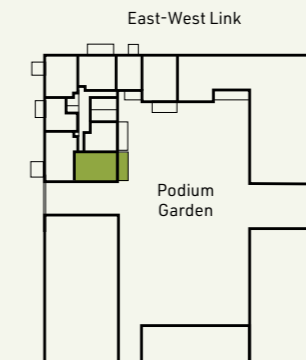
Kitchen/Living/Dining	6.6m x 3.5m	21'11" x 11'6"
Principal Bedroom	3.8m x 3.4m	12'6" x 11'5"
Bedroom 2	3.4m x 3.4m	11'2" x 11'2"
Bathroom	2.0m x 2.1m	6'8" x 7'1"
Terrace	1.8m x 7.3m	6'0" x 24'1"



## Site



## Plot



## Floor

<b>1</b>	Apartment 655
----------	---------------

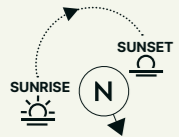
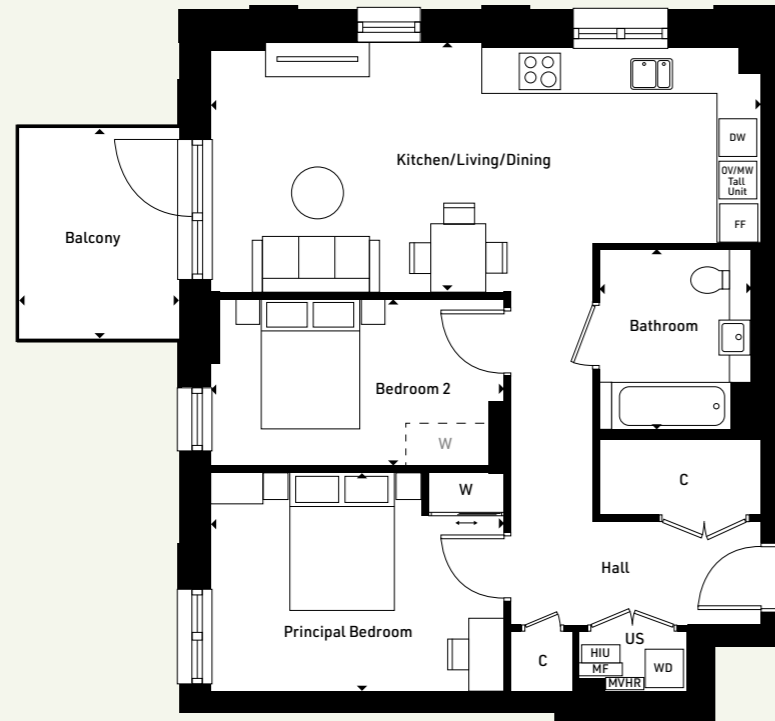
X - Lift | C - Cupboard | W - Built-in wardrobe | [W] Space for Wardrobe | FF - Fridge/Freezer | DW - Dishwasher | WD - Washer Dryer | OV - Oven  
MW - Microwave | US - Utility Store | MF - Manifold | HIU - Heat Interface Unit | MVHR - Mechanical Ventilation with Heat Recovery

# Two-Bed

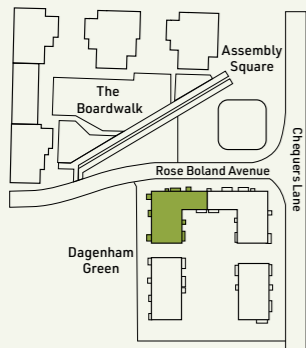
Apartments 658, 666, 674, 682,  
690, 698, 704, 710, 716

Gross Internal Floor Area 74.60 m<sup>2</sup> / 802.97 ft<sup>2</sup>

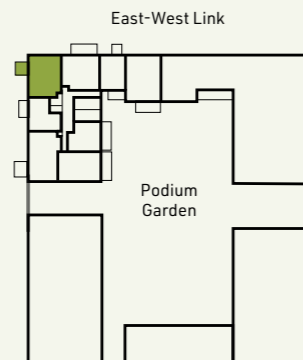
Kitchen/Living/Dining	8.0m x 3.6m	26'2" x 12'0"
Principal Bedroom	4.2m x 3.2m	14'0" x 10'5"
Bedroom 2	4.2m x 2.4m	14'0" x 7'11"
Bathroom	2.2m x 2.6m	7'4" x 8'7"
Balcony	2.3m x 3.0m	7'8" x 10'0"



Site



Plot



Floor

- 1 Apartment 658
- 2 Apartment 666
- 3 Apartment 674
- 4 Apartment 682
- 5 Apartment 690
- 6 Apartment 698
- 7 Apartment 704
- 8 Apartment 710
- 9 Apartment 716

X - Lift | C - Cupboard | W - Built-in wardrobe | [W] Space for Wardrobe | FF - Fridge/Freezer | DW - Dishwasher | WD - Washer Dryer | OV - Oven  
MW - Microwave | US - Utility Store | MF - Manifold | HIU - Heat Interface Unit | MVHR - Mechanical Ventilation with Heat Recovery

# Three-Bed Apartments

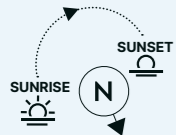


# Three-Bed

Apartments 656, 664, 672, 680,  
688, 696, 702, 708, 714, 720, 724

Gross Internal Floor Area 85.88 m<sup>2</sup> / 924.44 ft<sup>2</sup>

Kitchen/Living/Dining	3.8m x 7.0m	12'8" x 22'11"
Principal Bedroom	2.9m x 4.3m	9'5" x 14'4"
Bedroom 2	4.4m x 3.3m	14'8" x 10'9"
Bedroom 3	3.8m x 2.3m	12'8" x 7'7"
Bathroom	2.1m x 2.0m	7'1" x 6'8"
Balcony	2.3m x 3.5m	7'8" x 11'5"

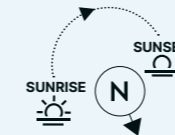
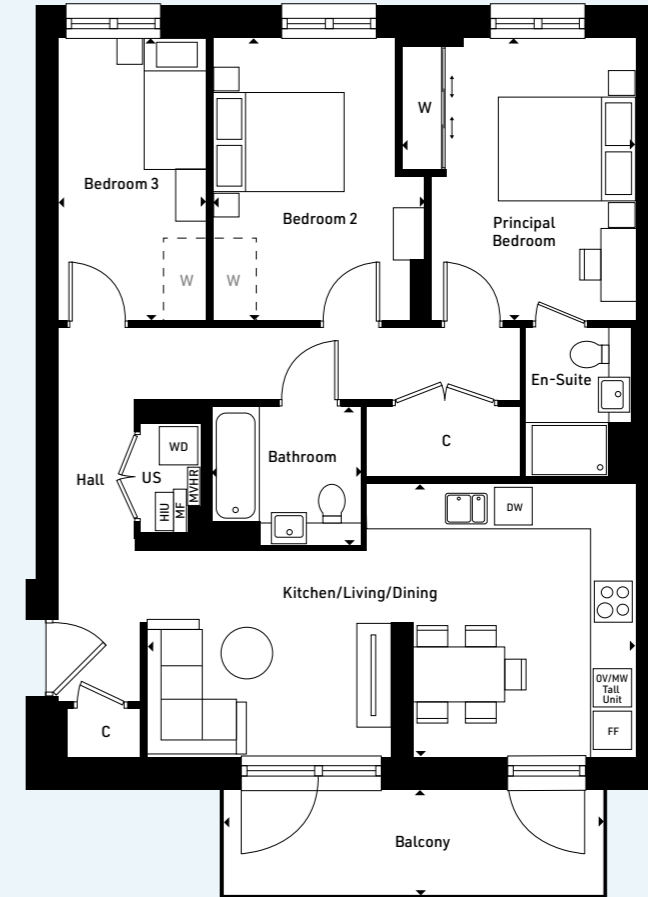


# Three-Bed

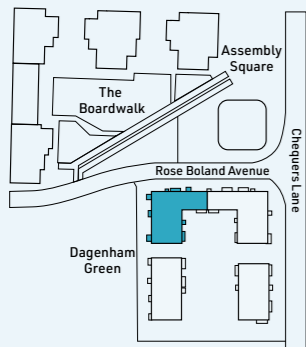
Apartment 669, 677, 685, 693

Gross Internal Floor Area 87.29 m<sup>2</sup> / 939.59 ft<sup>2</sup>

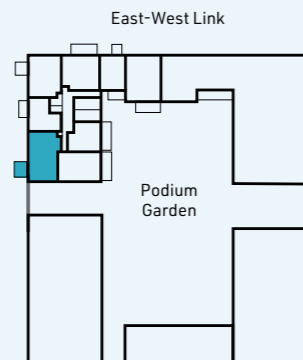
Kitchen/Living/Dining	7.1m x 3.9m	23'3" x 13'0"
Principal Bedroom	3.4m x 4.1m	11'1" x 13'6"
Bedroom 2	3.1m x 4.1m	10'1" x 13'6"
Bedroom 3	2.1m x 4.1m	7'1" x 13'6"
Bathroom	2.1m x 2.0m	7'1" x 6'8"
Balcony	5.5m x 1.5m	18'1" x 5'0"



Site



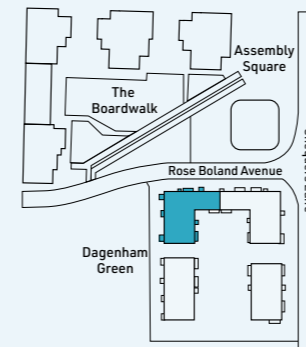
Plot



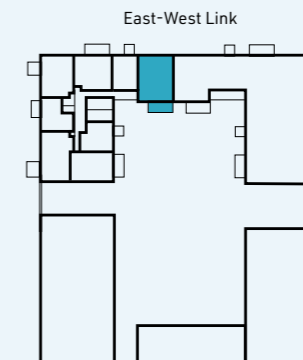
Floor

1	Apt 656	7	Apt 702
2	Apt 664	8	Apt 708
3	Apt 672	9	Apt 714
4	Apt 680	10	Apt 720
5	Apt 688	11	Apt 724
6	Apt 696		

Site



Plot



Floor

2	Apartment 669
3	Apartment 677
4	Apartment 685
5	Apartment 693

X - Lift | C - Cupboard | W - Built-in wardrobe | [W] Space for Wardrobe | FF - Fridge/Freezer | DW - Dishwasher | WD - Washer Dryer | OV - Oven  
MW - Microwave | US - Utility Store | MF - Manifold | HIU - Heat Interface Unit | MVHR - Mechanical Ventilation with Heat Recovery

X - Lift | C - Cupboard | W - Built-in wardrobe | [W] Space for Wardrobe | FF - Fridge/Freezer | DW - Dishwasher | WD - Washer Dryer | OV - Oven  
MW - Microwave | US - Utility Store | MF - Manifold | HIU - Heat Interface Unit | MVHR - Mechanical Ventilation with Heat Recovery

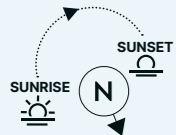
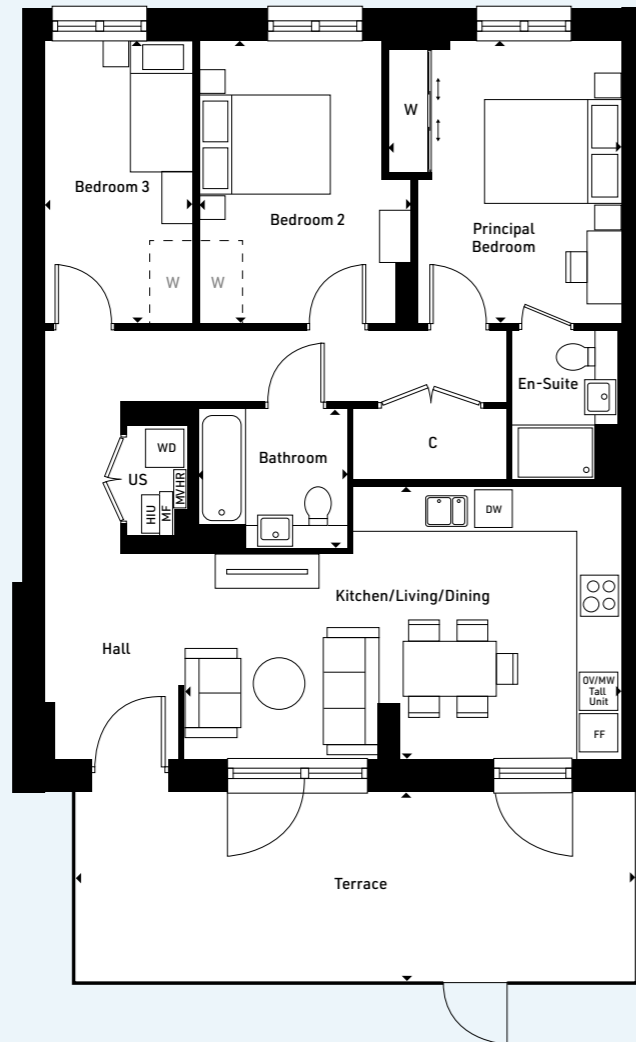
# Three-Bed

Apartment 661

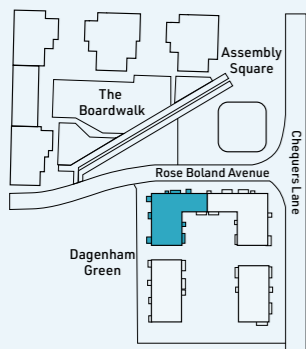


Gross Internal Floor Area 87.27 m<sup>2</sup> / 939.35 ft<sup>2</sup>

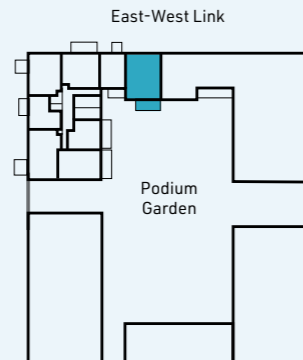
Kitchen/Living/Dining	6.3m x 3.9m	20'10" x 13'0"
Principal Bedroom	3.4m x 4.1m	11'1" x 13'6"
Bedroom 2	3.0m x 4.1m	10'1" x 13'6"
Bedroom 3	2.1m x 4.1m	7'1" x 13'6"
Bathroom	2.1m x 2.0m	7'1" x 6'8"
Terrace	8.1m x 2.7m	26'8" x 9'0"



Site



Plot



Floor

**1** Apartment 661

X - Lift | C - Cupboard | W - Built-in wardrobe | [W] Space for Wardrobe | FF - Fridge/Freezer | DW - Dishwasher | WD - Washer Dryer | OV - Oven  
 MW - Microwave | US - Utility Store | MF - Manifold | HIU - Heat Interface Unit | MVHR - Mechanical Ventilation with Heat Recovery

Computer generated image is indicative only

# More than just a place to live

We at Peabody have a proud legacy of helping generations of homebuyers and residents find their place in thriving neighbourhoods, communities and homes for over 160 years.

The team at Peabody New Homes is dedicated to finding you a home that is more than just a place to live. A place you can call your own. A place to belong. A place that you're proud to call home.

Find @PeabodyNewHomes on



## BUILDING HISTORY

Formed over 160 years ago by the American financier and philanthropist George Peabody, Peabody is one of the UK's oldest and largest housing associations responsible for more than 108,000 homes and around 220,000 residents across London and the Home Counties.



## CUSTOMER FOCUS

Whether it's your first or forever home, we know that buying a new place can be a demanding time. Our sales team is committed to guiding you through the process and helping you every step of the way. Rated "Excellent" on Trustpilot, we're proud to offer you a service that makes a difference.



## QUALITY, DESIGN & SUSTAINABILITY

Peabody's reputation is one of the most respected in the housing industry renowned for quality, multi-award-winning and innovative design. We work with industry experts and continually monitor quality throughout the building process to reduce our impact on climate change, lessen our carbon footprint and create properties people are proud to call home.

Our Greener Homes Programme is our commitment to the environment and will aim to minimise our impact on the planet and support thriving neighbourhoods.



Scan to find out more



## SOCIAL IMPACT

Our social purpose is why we exist. We re-invest the surplus made from the sale of our homes to provide more homes and services to those who need it most. We deliver services that support customers and the wider communities that we work in, and invest in local projects through our Community Foundation.



Scan to find out more



\*2023/2024 Annual Report

Every care has been taken in the preparation of this brochure. The details contained herein are for guidance only and should not be relied upon as exactly describing any of the particular material illustrated or written by any order under the Consumer Protection from Unfair Trading Regulations 2008. This information does not constitute a contract, part of a contract or warranty. The developer operates a programme of continuous product development. Features, internal and external, may vary from time to time and may differ from those shown in the brochure. Computer generated images and photography used within this brochure are indicative only. Dagenham Green is a marketing name and may not form part of the postal address for these properties. Home layouts provide approximate measurements only. Dimensions, which are taken from the indicated points of measurement, are for guidance only and are not intended to be used for carpet sizes, appliance space or items of furniture. Areas are provided as gross internal areas and may vary. Bathroom and kitchen layouts are indicative only and are subject to change. The information contained within this document does not constitute part of any offer, contract or warranty. Whilst the plans have been prepared with all due care for the convenience of the intending purchaser, the information contained herein is a preliminary guide only. September 2025.

