

Prices
from
£165,000

Grange Farm, Bovingdon

Holden Road, Bovingdon, Hemel Hempstead, HP3 0GY

A brand-new development of homes designed for modern living

Trading as
settle.Paradigm



£ Prices from £165,000 (30% share)

% Share available 30%-75%

🏠 3 Bedroom house



Grange Farm, Bovingdon

Bathroom suite and
thermostatic shower with
heated towel rail

Carpet throughout living areas

Amtico flooring in kitchen,
bathroom & downstairs toilet

Air Source Heat Pump & PV
Panels

Allocated parking

Fitted kitchen with integrated
oven and induction hob

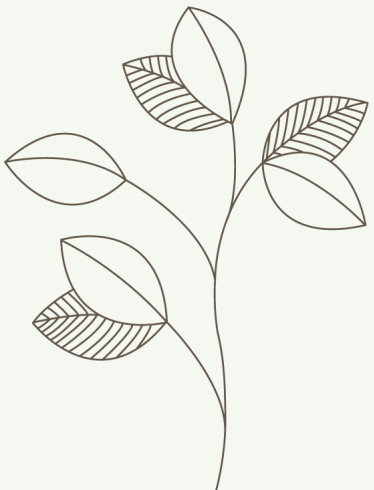
Integrated washer/dryer and
fridge freezer

Turfed rear garden with paved
patio area

Bovingdon Grange blends semi-rural charm with everyday convenience. Set in the Hertfordshire countryside and only 3 miles from both Hemel Hempstead and Chesham stations, it offers smooth connections by rail or bus. The village's lively high street, generous green spaces, and active local sports clubs create a community where relaxation and accessibility come together.



These particulars do not constitute any part of an offer or contract. Any intended purchasers must satisfy themselves as to the correctness of each of the statements contained in these particulars. All floor layouts may be subject to changes. The dimensions given on the plan are subject to minor variations intended for guidance only and are not to be used for carpets, appliances or items of furniture.



SPECIFICATION

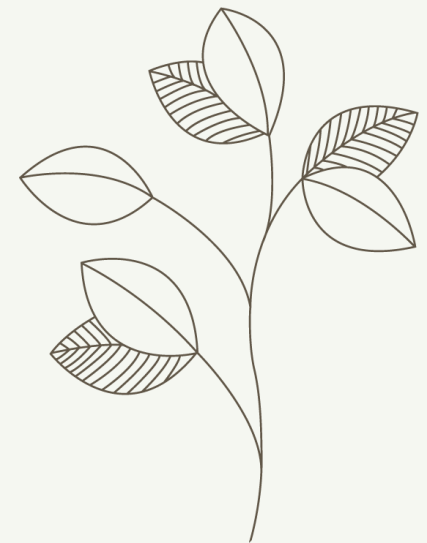
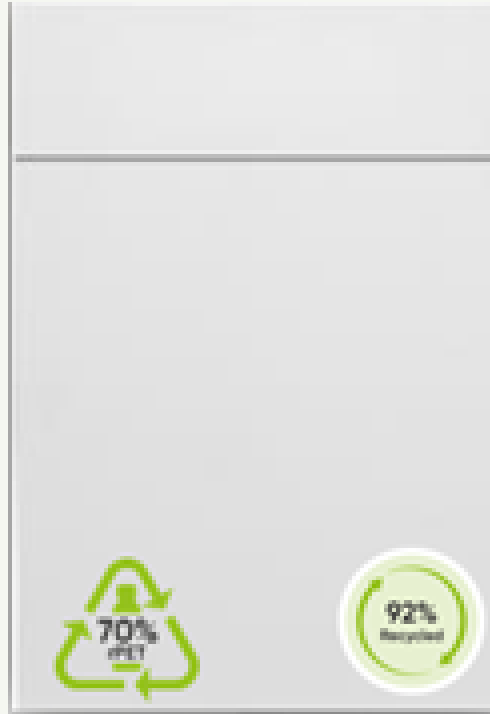
KITCHEN

MANUFACTURER
Symphony

COLOUR
White

HANDLES
Bow Brushed Nickel

WORK TOP
Carbon Steel



The specifications and information provided herein are for general informational purposes only and are subject to change without notice. Actual product colours may vary slightly due to differences in screen settings, lighting conditions, and the nature of physical materials. We strive for accuracy but cannot guarantee that digital imagery precisely reflects the final product.

SPECIFICATION

FLOORING

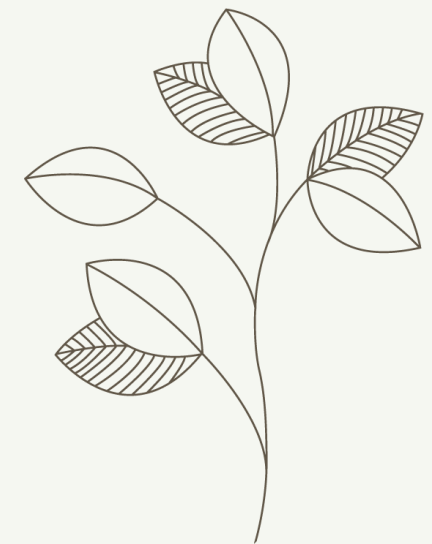
BATHROOM TILE-
MADAGASCAR
Blanco



AMTICO FLOORING
Nordic Oak Wod



CARPET - HAMPSTEAD
Florin



The specifications and information provided herein are for general informational purposes only and are subject to change without notice. Actual product colours may vary slightly due to differences in screen settings, lighting conditions, and the nature of physical materials. We strive for accuracy but cannot guarantee that digital imagery precisely reflects the final product.



THREE BED HOUSE

Plots 30*, 52*, 53*, 54*
(* handed)

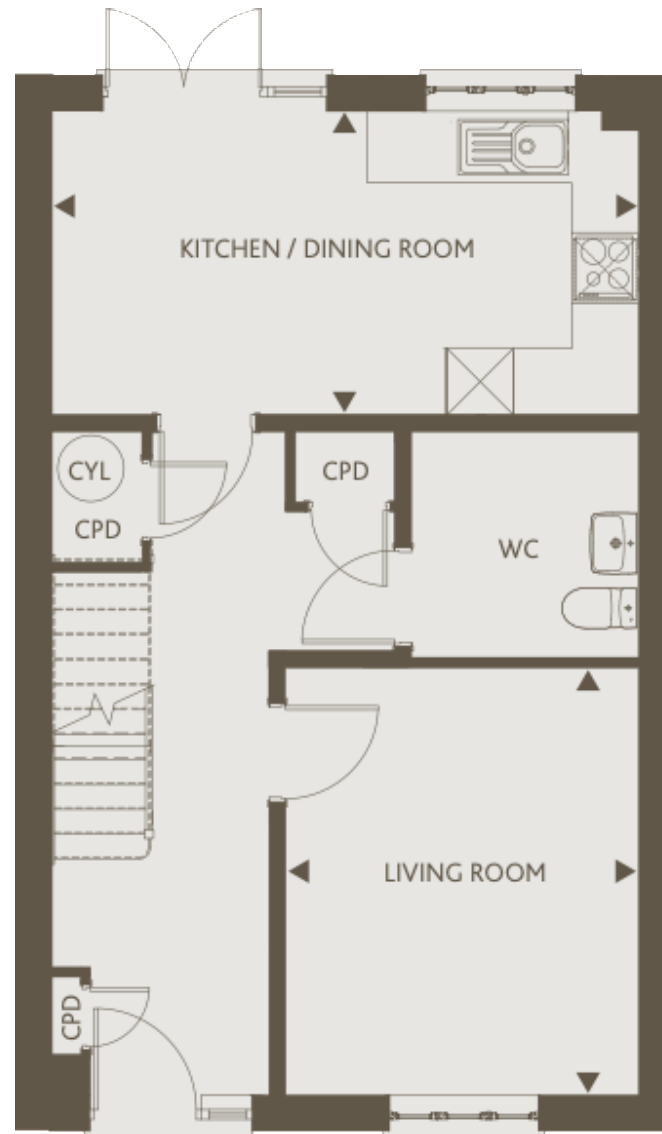
KITCHEN/DINING
17'4" x 9'1" 5.34m x 2.79m

LIVING ROOM
10'7" x 12'9" 3.23m x 3.90m

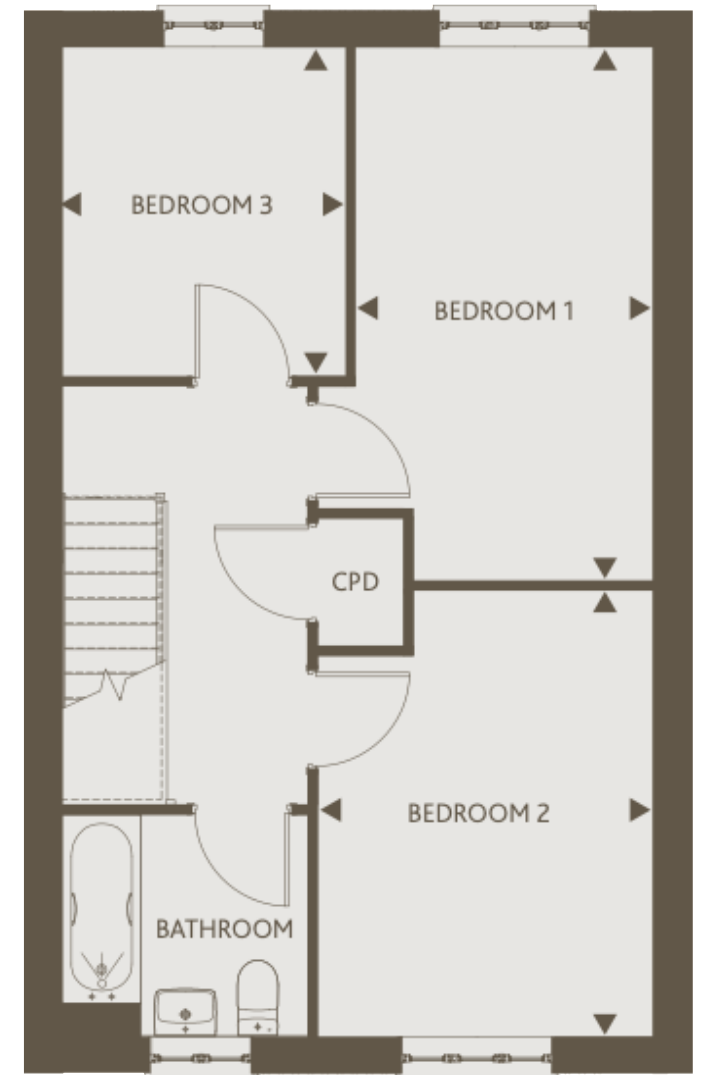
BEDROOM 1
8'10" x 15'10" 2.71m x 4.83m

BEDROOM 2
9'11" x 13'2" 3.04m x 4.01m

BEDROOM 3
8'5" x 9'10" 2.57m x 3.01m



GROUND FLOOR



FIRST FLOOR

These particulars do not constitute any part of an offer or contract. Any intended purchasers must satisfy themselves as to the correctness of each of the statements contained in these particulars. All floor layouts maybe subject to changes. The dimensions given on the plan are subject to minor variations intended for guidance only and are not be used for carpets, appliances or items of furniture.





SITE PLAN

 Affordable Rent Properties



These particulars do not constitute any part of an offer or contract. Any intended purchasers must satisfy themselves as to the correctness of each of the statements contained in these particulars. All floor layouts may be subject to changes. The dimensions given on the plan are subject to minor variations intended for guidance only and are not to be used for carpets, appliances or items of furniture.

Trading as
settle.*Paradigm*

For more information

0300 303 8046

www.settlesales.co.uk

