



ASHBROOK

ASHCHURCH, GLOUCESTERSHIRE

WELCOME TO ASHBROOK

WELCOME TO ASHBROOK, A COLLECTION OF TWO, THREE AND FOUR AND FIVE-BEDROOM PROPERTIES AVAILABLE THROUGH SHARED OWNERSHIP, ALL LOCATED IN THE BEAUTIFUL VILLAGE OF ASHCHURCH JUST OUTSIDE OF TEWKESBURY.

Ashbrook represents a new standard of living for the area, built from the ground up with sustainability in mind and designed to provide residents with a truly contemporary lifestyle. The project itself utilises Homes England funding to ensure every home is 'all-electric' and energy efficient, combining this with open-plan layouts and modern fixtures to create a stylish, vibrant environment. For residents, Ashbrook is ideally positioned to take advantage of everyday amenities and local transport links.

THE WORLD AROUND YOU

Ashbrook is a vibrant new collection of homes in Ashchurch, Tewkesbury - a beautiful village nestled amongst unparalleled Gloucestershire countryside. Ashchurch is the ideal family setting, offering everyday amenities, excellent transport links to major UK destinations and easy access to exceptional outdoor spaces. Tewkesbury is just minutes away and represents one of the most desirable market towns in the country, offering fantastic amenities and a rich heritage with plenty to see and do.





1. Tewkesbury
2. Tewkesbury
3. Tewkesbury Aerial
4. St Nicholas Ashchurch
5. Tewkesbury Rail Line



ASHBROOK IS PERFECTLY CONNECTED IN EVERY DIRECTION MAKING IT A HOME BUYERS DREAM

2.9 MILES

TEWKESBURY

5.9 MILES

BISHOPS CLEEVE

9.2 MILES

CHELTENHAM

13 MILES

GLOUCESTER


A CONNECTED COMMUNITY

Ashchurch is a welcoming Gloucestershire village close to Tewkesbury, offering a strong community feel and easy access to everyday amenities. With around 6,000 residents, it provides shops, pubs, gyms and essential services, plus excellent transport links to Worcester, Cheltenham and beyond. Surrounded by green spaces and walking routes, it's ideal for families, dog owners and anyone seeking relaxed village living.


CONNECTIVITY

ASHCHURCH FOR TEWKESBURY STATION  4 MINUTES


M5  4 MINUTES

BRISTOL AIRPORT  60 MINUTES

LOCAL AMENITIES

GYM  3 MINUTES

DESIGNER OUTLET  4 MINUTES


SUPERMARKET  5 MINUTES

DOCTOR  6 MINUTES

EDUCATION

ASHCHURCH PRIMARY SCHOOL  2 MINUTES

TREDINGTON PRIMARY SCHOOL  10 MINUTES

PATES GRAMMAR SCHOOL  15 MINUTES

PLACE OF INTEREST

ST NICHOLAS CHURCH  2 MINUTES

COTSWOLDS DESIGNER OUTLET  4 MINUTES

THE ROSES THEATRE  9 MINUTES

TEWKESBURY MARINA  10 MINUTES

Travel times are all shown in minutes and are representative of driving time. All times and distances are taken from [google.com/maps](https://www.google.com/maps)



BUILDING A BETTER FUTURE THROUGH NEW HOMES

At Platform Home Ownership, we're passionate about building quality homes for our customers and creating communities that homeowners can be proud of. It's our mission to build a better future for the UK - investing in affordable homes to ensure accessible routes to homeownership for everyone.

BUYING THROUGH SHARED OWNERSHIP

BUYING YOUR ASHBROOK HOME WITH PLATFORM HOME OWNERSHIP

Your dream home is more affordable than you may think with Shared Ownership. Shared Ownership means you can purchase part of your home and then pay rent on the remaining share.

Typically, you can purchase 40-75% of your home, but lower shares are available. What's more, Shared Ownership is flexible, and allows you to increase your level of

ownership over time if you choose to. Whatever your looking for, we have a wide selection of homes perfect for whatever your needs.

Buying through Shared Ownership at this development means you can purchase between 10-75% of your property and pay a subsidised rent on the remaining share you don't own.

1

BUY THE FIRST SHARE IN YOUR NEW HOME

Purchase an initial share typically between 10% and 75% with a 5-10% deposit on that share

2

PAY RENT ON THE REMAINING SHARE

Pay subsidised rent on the portion you don't own, often below market rates

3

BUY MORE SHARES IN YOUR HOME LATER

Increase ownership through 'staircasing' buying additional shares as finances allow

GET TO KNOW

ASHBROOK

ASHCHURCH, GLOUCESTERSHIRE

Ashbrook features a collection of 2, 3, 4 & 5 bedroom homes offering the perfect opportunity for first time buyers, downsizers and growing families.

SHARED OWNERSHIP



THE COOPER
2 Bedroom Home

PLOTS: 3, 4, 5, 6, 9, 10, 11, 22, 23, 28, 29, 30, 63, 64, 65, 66, 101, 102, 127, 128, 129, 130, 131, 132, 138, 139, 144



THE ASHER
3 Bedroom Home

PLOTS: 2, 14, 15, 31, 32, 89, 123, 124, 125, 134, 140, 143, 145



THE BECKET
3 Bedroom Home

PLOTS: 1, 33, 88, 126, 133 & 137



THE SPEIRS
4 Bedroom Home

PLOTS: 7, 8, 24, 25, 26, 27, 107, 115, 116, 135, 136, 141, 142

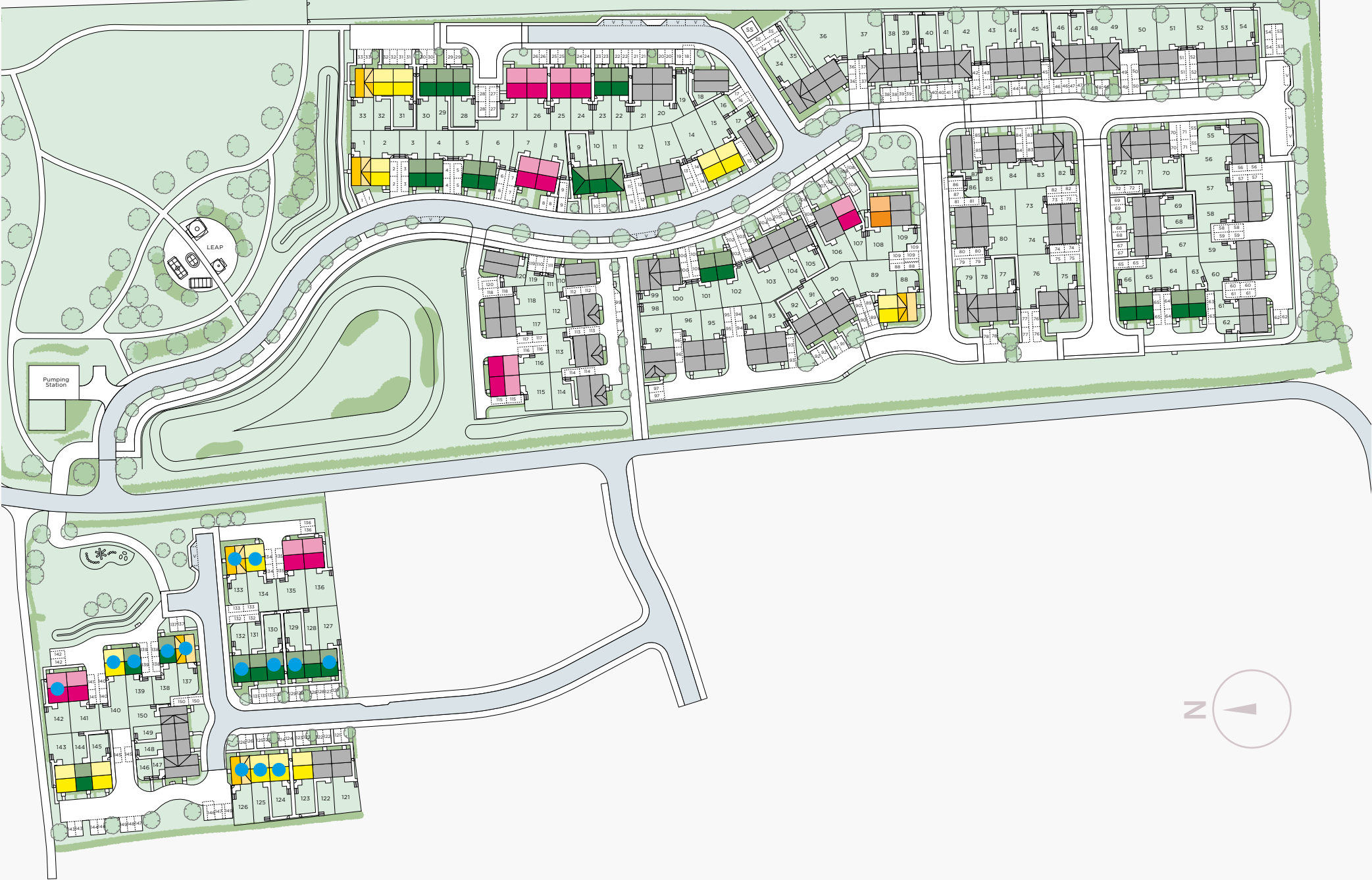


THE SPEIRS II
5 Bedroom Home

PLOTS: 108



SSTC PLOT



THE COOPER

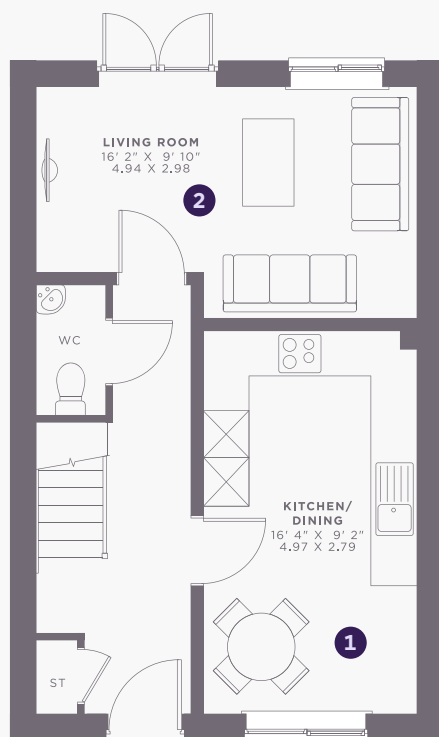


This image is from an imaginary viewpoint within an open space area. Its purpose is to give a feel for the development, not an accurate description of each property. The illustration shows a typical Platform Home Ownership home of this type, but there are, however, variances from site to site. All dimensions indicated are approximate and the furniture layout is for illustrative purposes only. Homes may be 'handed' (mirror image) versions of the illustrations, and may be detached, semi-detached or terraced. External materials, finishes, landscaping, windows and the position of garages, (where provided) may vary throughout the development. Please speak to one of our sales team for further details or specific measurements.

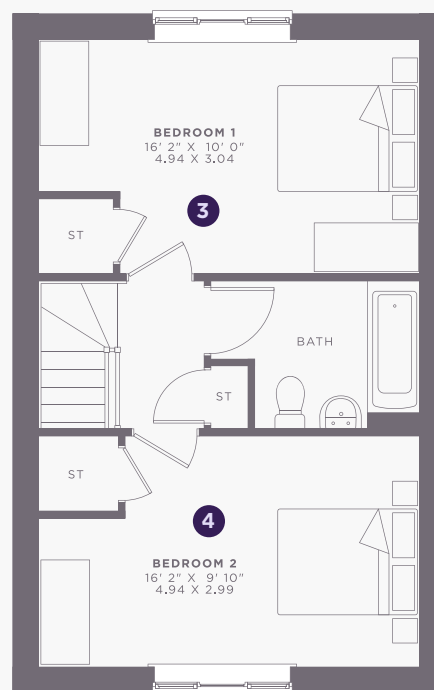
MID / END-TERRACE

THE COOPER

TOTAL: 882 SQ FT



GROUND



FIRST

SPECIFICATION

- 10 year build warranty
- Modern fitted kitchen with oven, hob and extractor fan
- Downstairs W/C
- Family bathroom with shower over bath
- Vinyl floor to wet areas
- Air source heating
- Turfed & fenced rear garden
- Allocated parking

GROUND FLOOR

①	Living Room	14.7 sqm	158.5 sqft
②	Kitchen / Dining	13.9 sqm	149.3 sqft

FIRST FLOOR

③	Bedroom 1	15.0 sqm	161.7 sqft
④	Bedroom 2	14.8 sqm	159.0 sqft

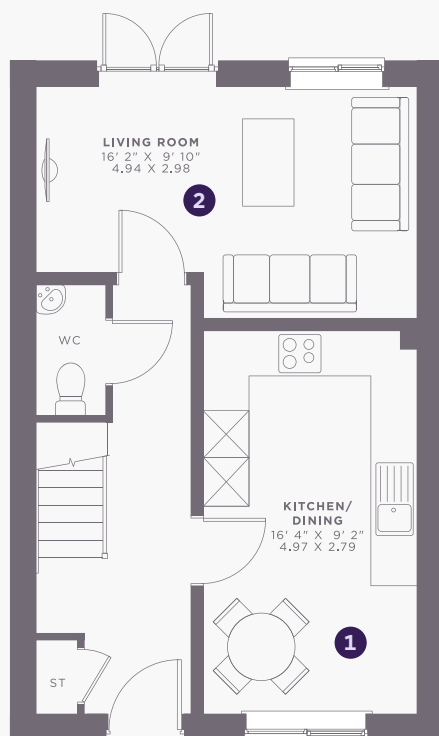


This image is from an imaginary viewpoint within an open space area. Its purpose is to give a feel for the development, not an accurate description of each property. The illustration shows a typical Platform Home Ownership home of this type, but there are, however, variances from site to site. All dimensions indicated are approximate and the furniture layout is for illustrative purposes only *****. Homes may be 'handed' (mirror image) versions of the illustrations, and may be detached, semi-detached or terraced. External materials, finishes, landscaping, windows and the position of garages, (where provided) may vary throughout the development. Please speak to one of our sales team for further details or specific measurements.

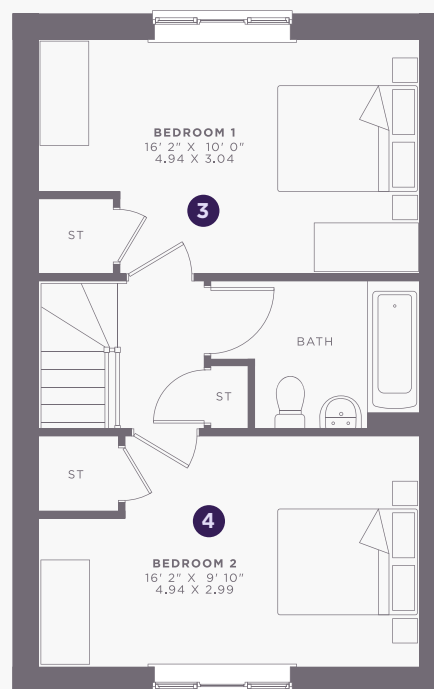
SEMI-DETACHED

THE COOPER

TOTAL: 882 SQ FT



GROUND



FIRST

SPECIFICATION

- 10 year build warranty
- Modern fitted kitchen with oven, hob and extractor fan
- Downstairs W/C
- Family bathroom with shower over bath
- Vinyl floor to wet areas
- Air source heating
- Turfed & fenced rear garden
- Allocated parking

GROUND FLOOR

①	Living Room	14.7 sqm	158.5 sqft
②	Kitchen / Dining	13.9 sqm	149.3 sqft

FIRST FLOOR

③	Bedroom 1	15.0 sqm	161.7 sqft
④	Bedroom 2	14.8 sqm	159.0 sqft

THE ASHER



This image is from an imaginary viewpoint within an open space area. Its purpose is to give a feel for the development, not an accurate description of each property. The illustration shows a typical Platform Home Ownership home of this type, but there are, however, variances from site to site. All dimensions indicated are approximate and the furniture layout is for illustrative purposes only *****. Homes may be "handed" (mirror image) versions of the illustrations, and may be detached, semi-detached or terraced. External materials, finishes, landscaping, windows and the position of garages, (where provided) may vary throughout the development. Please speak to one of our sales team for further details or specific measurements.

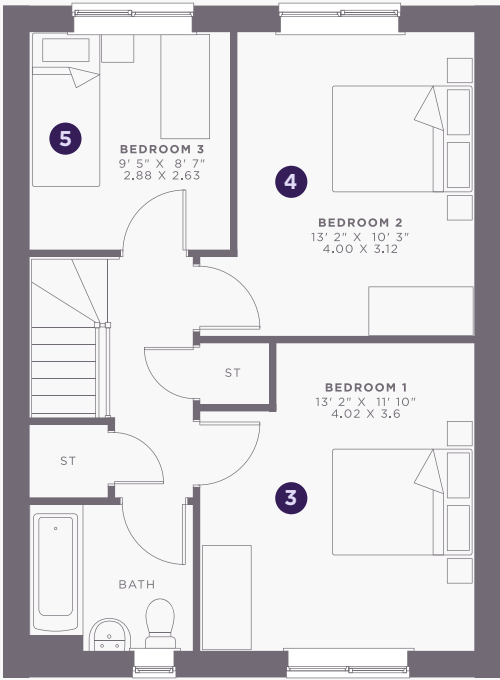
MID / END-TERRACE

THE ASHER

TOTAL: 1,019 SQ FT



GROUND



FIRST

SPECIFICATION

- 10 year build warranty
- Modern fitted kitchen with oven, hob and extractor fan
- Downstairs W/C
- Family bathroom with shower over bath
- Vinyl floor to wet areas
- Air source heating
- Turfed & fenced rear garden
- Allocated parking

GROUND FLOOR			
1	Kitchen / Dining	22.3 sqm	239.5 sqft
2	Living Room	14.8 sqm	159.0 sqft
FIRST FLOOR			
3	Bedroom 1	14.5 sqm	155.8 sqft
4	Bedroom 2	12.5 sqm	134.3 sqft
5	Bedroom 3	7.6 sqm	81.5 sqft

THE ASHER



This image is from an imaginary viewpoint within an open space area. Its purpose is to give a feel for the development, not an accurate description of each property. The illustration shows a typical Platform Home Ownership home of this type, but there are, however, variances from site to site. All dimensions indicated are approximate and the furniture layout is for illustrative purposes only *****. Homes may be 'handed' (mirror image) versions of the illustrations, and may be detached, semi-detached or terraced. External materials, finishes, landscaping, windows and the position of garages, (where provided) may vary throughout the development. Please speak to one of our sales team for further details or specific measurements.

SEMI-DETACHED

THE ASHER

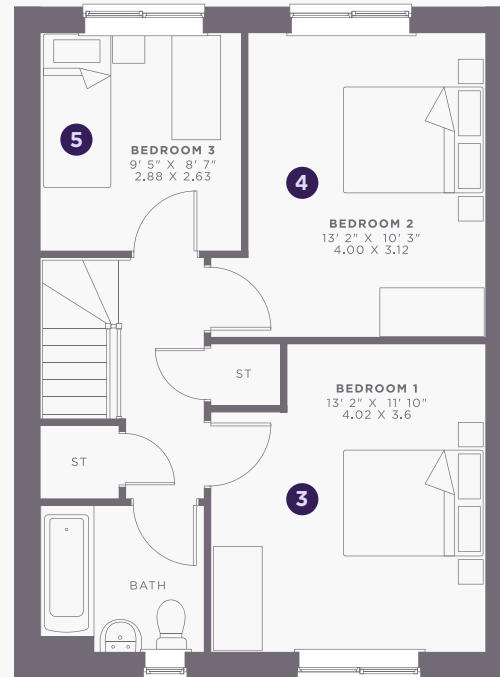
TOTAL: 1,019 SQ FT

SPECIFICATION

- 10 year build warranty
- Modern fitted kitchen with oven, hob and extractor fan
- Downstairs W/C
- Family bathroom with shower over bath
- Vinyl floor to wet areas
- Air source heating
- Turfed & fenced rear garden
- Allocated parking



GROUND



FIRST

GROUND FLOOR			
1	Kitchen / Dining	22.3 sqm	239.5 sqft
2	Living Room	14.8 sqm	159.0 sqft
FIRST FLOOR			
3	Bedroom 1	14.5 sqm	155.8 sqft
4	Bedroom 2	12.5 sqm	134.3 sqft
5	Bedroom 3	7.6 sqm	81.5 sqft



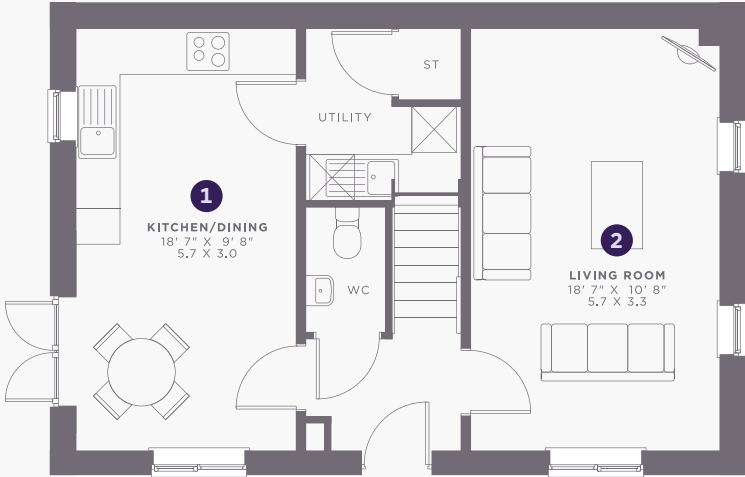
This image is from an imaginary viewpoint within an open space area. Its purpose is to give a feel for the development, not an accurate description of each property. The illustration shows a typical Platform Home Ownership home of this type, but there are, however, variances from site to site. All dimensions indicated are approximate and the furniture layout is for illustrative purposes only *****. Homes may be 'handed' (mirror image) versions of the illustrations, and may be detached, semi-detached or terraced. External materials, finishes, landscaping, windows and the position of garages, (where provided) may vary throughout the development. Please speak to one of our sales team for further details or specific measurements.

END-TERRACE

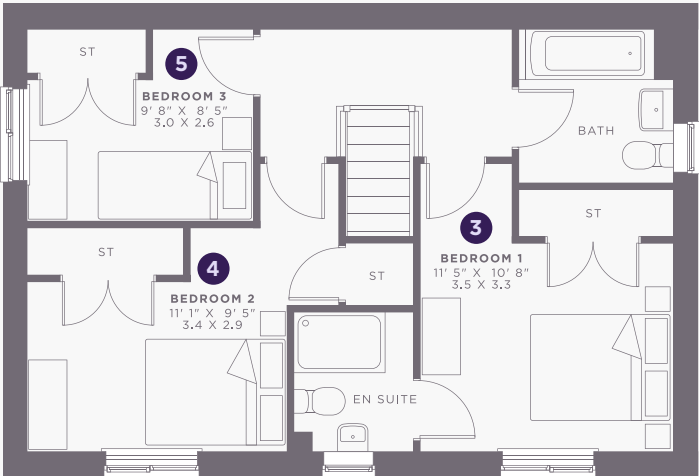
THE BECKET

TOTAL: 1,025 SQ FT

GROUND



FIRST



SPECIFICATION

- 10 year build warranty
- Modern fitted kitchen with oven, hob and extractor fan
- Downstairs W/C
- Family bathroom with shower over bath
- Vinyl floor to wet areas
- Air source heating
- Turfed & fenced rear garden
- Allocated parking

GROUND FLOOR			
1	Kitchen / Dining	17.1 sqm	184.1 sqft
2	Living Room	18.8 sqm	202.5 sqft
FIRST FLOOR			
3	Bedroom 1	11.5 sqm	124.3 sqft
4	Bedroom 2	9.9 sqm	106.1 sqft
5	Bedroom 3	7.8 sqm	84.0 sqft



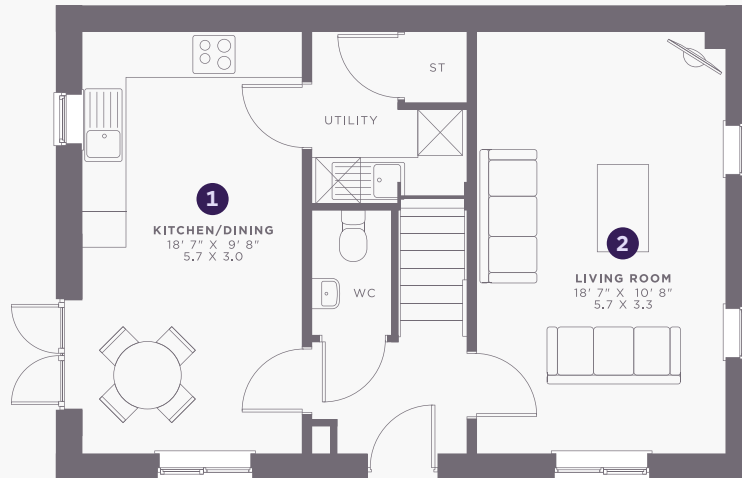
This image is from an imaginary viewpoint within an open space area. Its purpose is to give a feel for the development, not an accurate description of each property. The illustration shows a typical Platform Home Ownership home of this type, but there are, however, variances from site to site. All dimensions indicated are approximate and the furniture layout is for illustrative purposes only *****. Homes may be 'handed' (mirror image) versions of the illustrations, and may be detached, semi-detached or terraced. External materials, finishes, landscaping, windows and the position of garages, (where provided) may vary throughout the development. Please speak to one of our sales team for further details or specific measurements.

SEMI-DETACHED

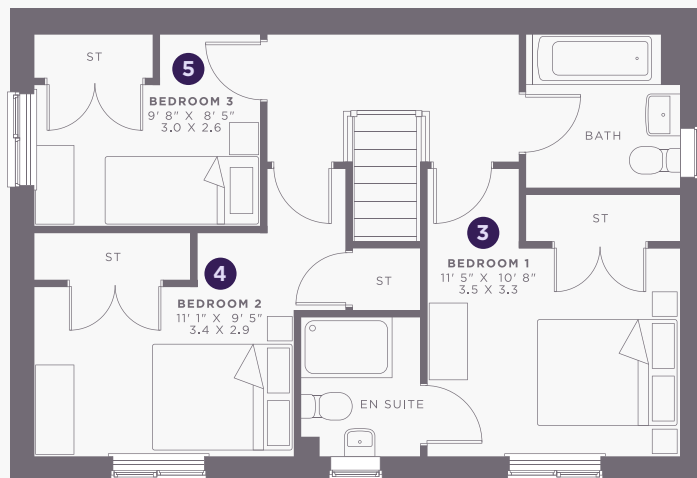
THE BECKET

TOTAL: 1,025 SQ FT

GROUND



FIRST



SPECIFICATION

- 10 year build warranty
- Modern fitted kitchen with oven, hob and extractor fan
- Downstairs W/C
- Family bathroom with shower over bath
- Vinyl floor to wet areas
- Air source heating
- Turfed & fenced rear garden
- Allocated parking

GROUND FLOOR			
1	Kitchen / Dining	17.1 sqm	184.1 sqft
2	Living Room	18.8 sqm	202.5 sqft
FIRST FLOOR			
3	Bedroom 1	11.5 sqm	124.3 sqft
4	Bedroom 2	9.9 sqm	106.1 sqft
5	Bedroom 3	7.8 sqm	84.0 sqft

THE SPEIRS

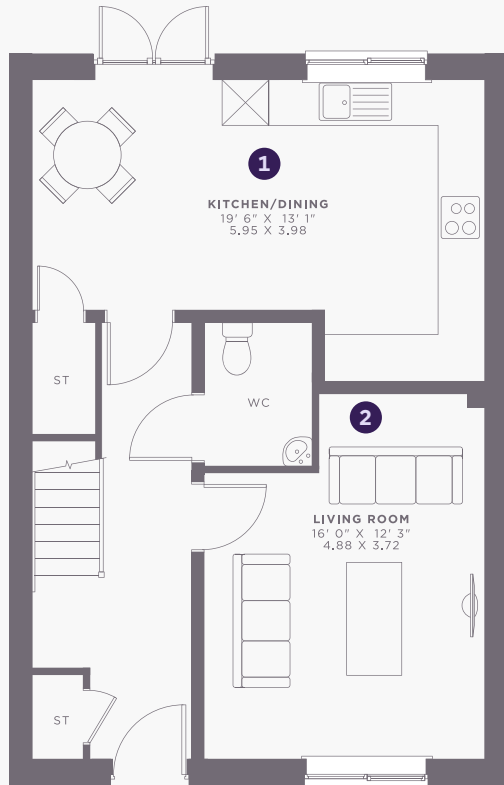


This image is from an imaginary viewpoint within an open space area. Its purpose is to give a feel for the development, not an accurate description of each property. The illustration shows a typical Platform Home Ownership home of this type, but there are, however, variances from site to site. All dimensions indicated are approximate and the furniture layout is for illustrative purposes only ***** Homes may be 'handed' (mirror image) versions of the illustrations, and may be detached, semi-detached or terraced. External materials, finishes, landscaping, windows and the position of garages, (where provided) may vary throughout the development. Please speak to one of our sales team for further details or specific measurements.

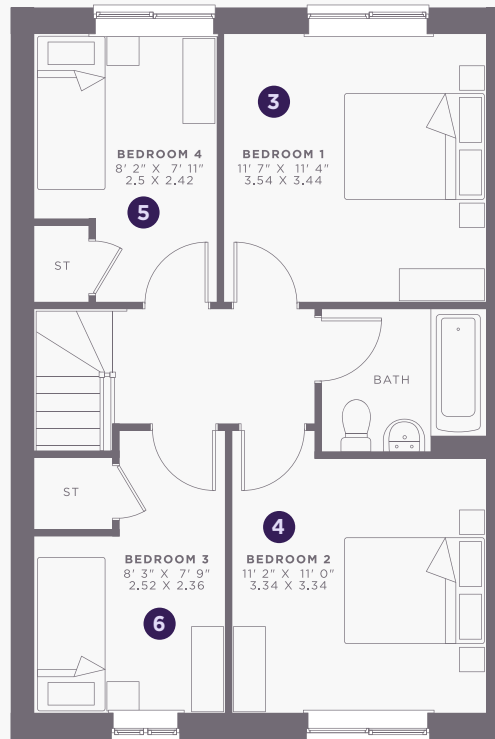
SEMI-DETACHED

THE SPEIRS

TOTAL: 1,154 SQ FT



GROUND



FIRST

SPECIFICATION

- 10 year build warranty
- Modern fitted kitchen with oven, hob and extractor fan
- Downstairs W/C
- Family bathroom with shower over bath
- Vinyl floor to wet areas
- Air source heating
- Turfed & fenced rear garden
- Allocated parking

GROUND FLOOR			
1	Kitchen / Dining	23.7 sqm	254.9 sqft
2	Living Room	18.2 sqm	195.4 sqft
FIRST FLOOR			
3	Bedroom 1	12.2 sqm	131.1 sqft
4	Bedroom 2	11.2 sqm	120.1 sqft
5	Bedroom 3	5.9 sqm	64.0 sqft
6	Bedroom 4	6.0 sqm	65.1 sqft



This image is from an imaginary viewpoint within an open space area. Its purpose is to give a feel for the development, not an accurate description of each property. The illustration shows a typical Platform Home Ownership home of this type, but there are, however, variances from site to site. All dimensions indicated are approximate and the furniture layout is for illustrative purposes only *****. Homes may be 'handed' (mirror image) versions of the illustrations, and may be detached, semi-detached or terraced. External materials, finishes, landscaping, windows and the position of garages, (where provided) may vary throughout the development. Please speak to one of our sales team for further details or specific measurements.

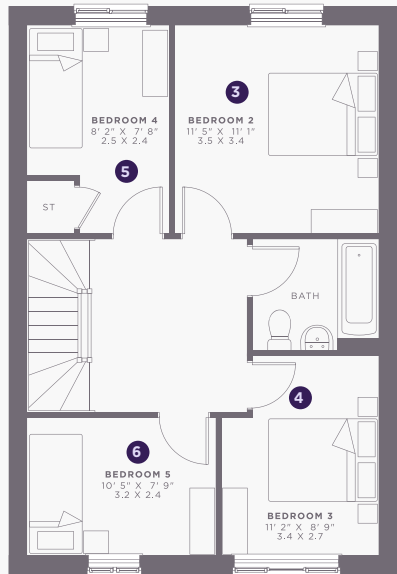
SEMI-DETACHED

THE SPEIRS II

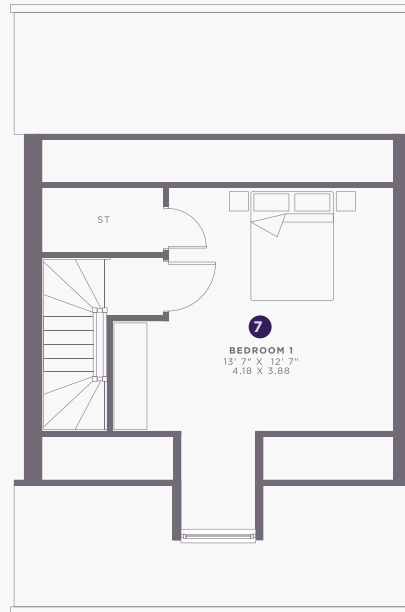
TOTAL: 1,281 SQ FT



GROUND



FIRST



SECOND

SPECIFICATION

- 10 year build warranty
- Modern fitted kitchen with oven, hob and extractor fan
- Downstairs W/C
- Family bathroom with shower over bath
- Vinyl floor to wet areas
- Air source heating
- Turfed & fenced rear garden
- Allocated parking

GROUND FLOOR			
1	Kitchen / Dining	23.6 sqm	254.0 sqft
2	Living Room	18.1 sqm	195.1 sqft
FIRST FLOOR			
3	Bedroom 2	11.9 sqm	128.1 sqft
4	Bedroom 3	9.2 sqm	98.8 sqft
5	Bedroom 4	6.0 sqm	64.6 sqft
6	Bedroom 5	7.7 sqm	82.7 sqft
FIRST FLOOR			
7	Bedroom 1	12.2 sqm	131.1 sqft

ASHCHURCH, GLOUCESTERSHIRE

ASHBROOK

HOUSE PRICES FOR ALL PLOTS AVAILABLE

PLOT	NAME	BEDS	TYPE	ADDRESS	100% SHARE	40% SHARE VALUE	MONTHLY RENT
1	Becket	3	Semi-Detached	1 Fidbrook Road, Ashchurch, Tewkesbury, GL20 7UY	£345,000	£138,000	£474.38
2	Asher	3	Semi-Detached	3 Fidbrook Road, Ashchurch, Tewkesbury, GL20 7UY	£345,000	£138,000	£474.38
3	Cooper	2	Semi-Detached	5 Fidbrook Road, Ashchurch, Tewkesbury, GL20 7UY	£275,000	£110,000	£378.13
4	Cooper	2	Semi-Detached	7 Fidbrook Road, Ashchurch, Tewkesbury, GL20 7UY	£275,000	£110,000	£378.13
5	Cooper	2	Semi-Detached	9 Fidbrook Road, Ashchurch, Tewkesbury, GL20 7UY	£275,000	£110,000	£378.13
6	Cooper	2	Semi-Detached	11 Fidbrook Road, Ashchurch, Tewkesbury, GL20 7UY	£275,000	£110,000	£378.13
7	Speirs	4	Semi-Detached	13 Fidbrook Road, Ashchurch, Tewkesbury, GL20 7UY	£370,000	£148,000	£508.75
8	Speirs	4	Semi-Detached	15 Fidbrook Road, Ashchurch, Tewkesbury, GL20 7UY	£370,000	£148,000	£508.75
9	Cooper	2	End-Terrace	17 Fidbrook Road, Ashchurch, Tewkesbury, GL20 7UY	£275,000	£110,000	£378.13
10	Cooper	2	Mid-Terrace	19 Fidbrook Road, Ashchurch, Tewkesbury, GL20 7UY	£270,000	£108,000	£371.25
11	Cooper	2	End-Terrace	21 Fidbrook Road, Ashchurch, Tewkesbury, GL20 7UY	£275,000	£110,000	£378.13
115	Speirs	4	Semi-Detached	5 Harvest Row, Ashchurch, Tewkesbury, GL20 7UZ	£370,000	£148,000	£508.75
116	Speirs	4	Semi-Detached	4 Harvest Row, Ashchurch, Tewkesbury, GL20 7UZ	£370,000	£148,000	£508.75
123	Asher	3	End-Terrace	19 Spindle Road, Ashchurch, Tewkesbury, GL20 7GT	£345,000	£138,000	£474.38
128	Cooper	2	Mid-Terrace	26 Spindle Road, Ashchurch, Tewkesbury, GL20 7GT	£270,000	£108,000	£371.25
131	Cooper	2	Mid-Terrace	32 Spindle Road, Ashchurch, Tewkesbury, GL20 7GT	£270,000	£108,000	£371.25
135	Speirs	4	Semi-Detached	40 Spindle Road, Ashchurch, Tewkesbury, GL20 7GT	£370,000	£148,000	£508.75
136	Speirs	4	Semi-Detached	42 Spindle Road, Ashchurch, Tewkesbury, GL20 7GT	£370,000	£148,000	£508.75



Find us at:
Spindle Road, Ashchurch,
Tewkesbury, GL20 7GT

GET IN TOUCH

0333 200 7304

sales@platformhg.com

[platformhomeownership.com](https://www.platformhomeownership.com)



[/PLATFORMHOMEOWNERSHIP](https://www.facebook.com/PLATFORMHOMEOWNERSHIP)



[/PLATFORMHOMEOWNERSHIP](https://www.instagram.com/PLATFORMHOMEOWNERSHIP)



[/PLATFORMNEWHOME](https://www.twitter.com/PLATFORMNEWHOME)

Platform Home Ownership have taken every effort to ensure that these documents are accurate and represent the properties available. Platform Home Ownership and the developer may in their efforts to improve design reserve the right to alter site plans, floorplans, elevations and specifications without prior notice. Maps shown are not to scaled and for illustrative purposes only. Distances are taken from [google.co.uk/maps](https://www.google.co.uk/maps). Information is correct at the time it was published - **April 2026**. For more information please visit us website at www.platformhomeownership.com