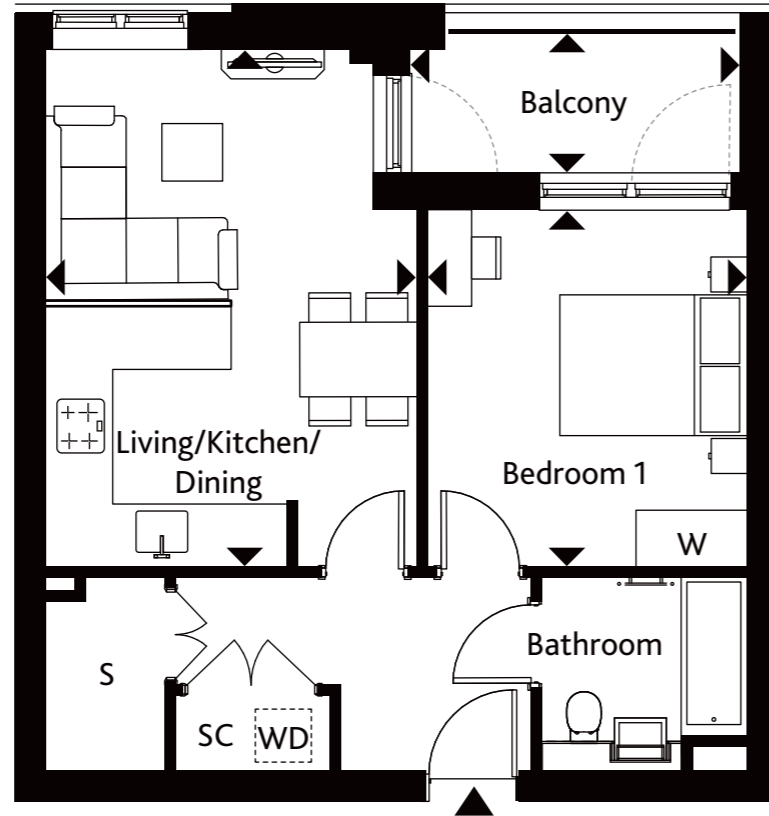
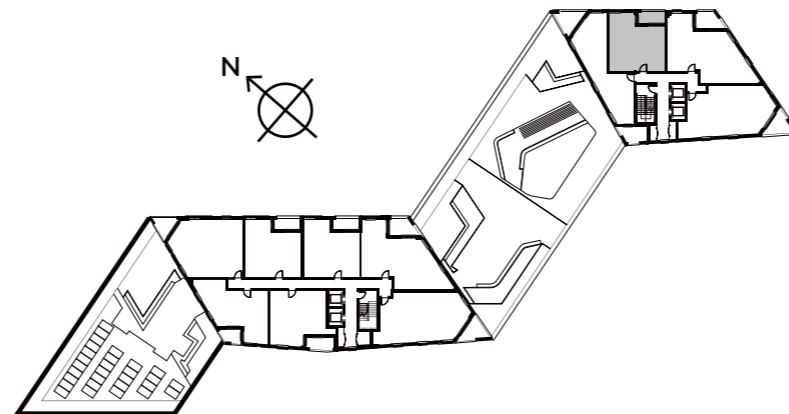


# APARTMENT 1002

WATERWAY 10<sup>TH</sup> FLOOR



Living/Kitchen/Dining	5.49m x 3.96m	18'0" x 12'11"
Bedroom 1	3.79m x 3.40m	12'5" x 11'2"
Balcony	3.50m x 1.51m	11'6" x 4'11"



Ceiling heights may vary with areas below 2.3 meters, please speak to a member of the sales team for more information.

Floorplans shown for Square Roots Lewisham are for approximate measurements only. Exact layouts and sizes may vary. All measurements may vary within a tolerance of +/-50mm. The dimensions are not intended to be used for carpet sizes, appliance sizes or items of furniture. Furniture layouts are indicative only. Kitchen layout indicative only. Please ask Sales Consultant for further information.