

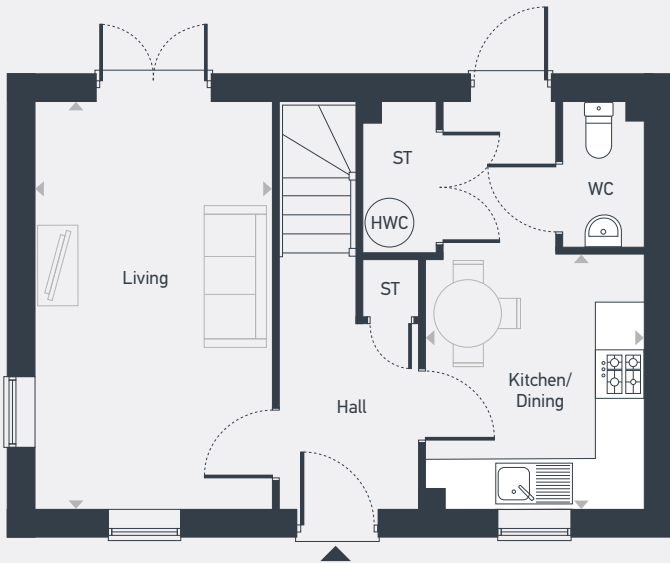
**The
Gwel**

**The Morveren
2 bedroom home**

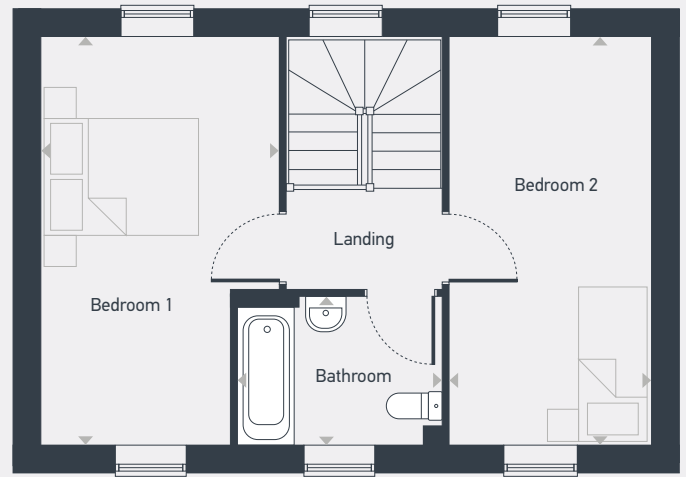


Plots as drawn: 138 and 140
Handed: 139 and 141

75.0 sq.m / 807.3 sq.ft



GROUND FLOOR



FIRST FLOOR

ST: Store WC: Water Closet HWC: Hot Water Cylinder

DIMENSIONS	m	ft
Living	5.00m x 2.93m	16'5" x 9'7"
Kitchen/Dining	3.14m x 2.69m	10'3" x 8'10"

DIMENSIONS	m	ft
Bedroom 1	5.00m x 2.93m (max)	16'5" x 9'7" (max)
Bedroom 2	5.00m x 2.48m	16'5" x 8'1"
Bathroom	2.52m x 1.81m	8'3" x 5'11"



01872 830 014 | placesforpeople.co.uk/the-gwel
Higher Newham Farm, Truro, TR1 2SN