

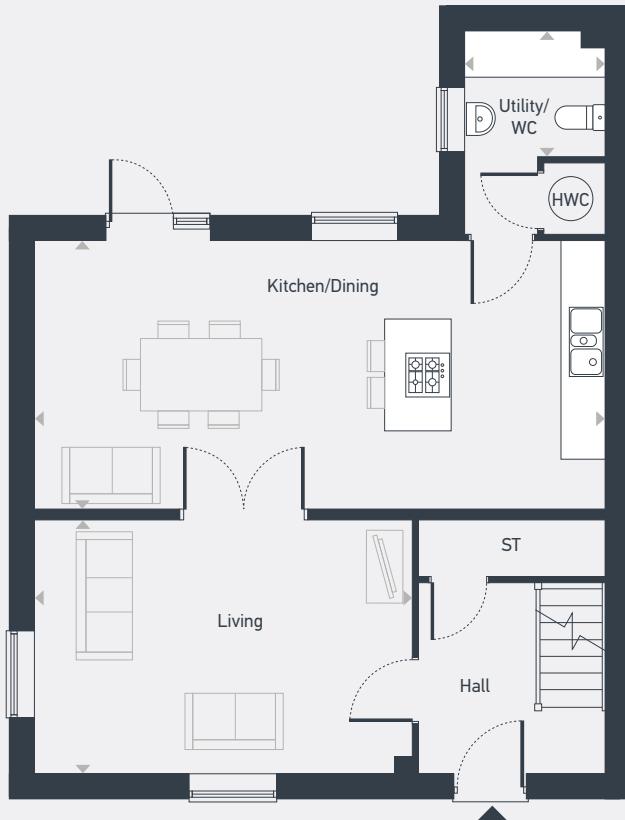
**The
Gwel**

**The Belerion
3 bedroom home**

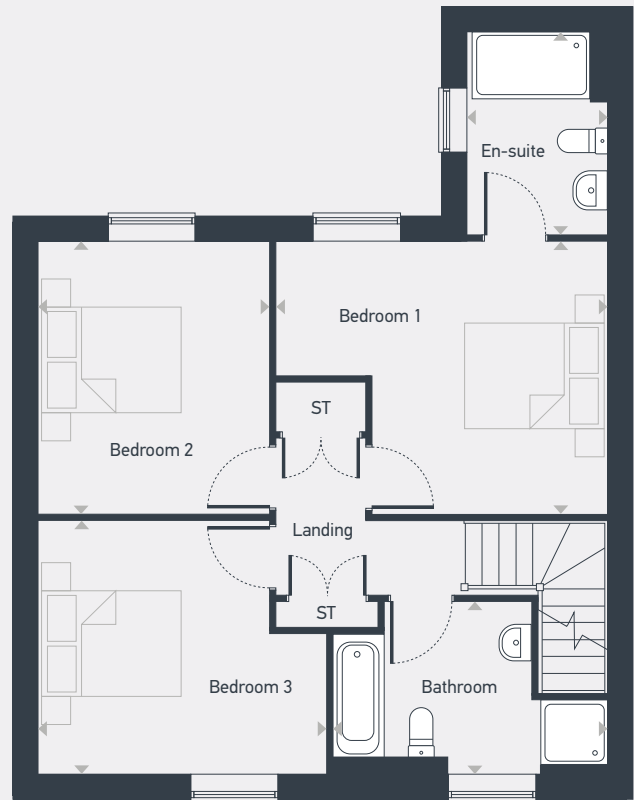


Plot as drawn: 187

123.0 sq.m / 1,325 sq.ft



GROUND FLOOR



FIRST FLOOR

ST: Store WC: Water Closet HWC: Hot Water Cylinder

DIMENSIONS	m	ft
Living	5.13m x 3.45m	16'10" x 11'4"
Kitchen/Dining	7.75m x 3.65m	25'5" x 12'0"
Utility/WC	1.70m x 1.90m	9'1" x 6'3"

DIMENSIONS	m	ft
Bedroom 1	4.50m x 3.71m	14'9" x 12'2"
En-suite	2.75m x 1.90m	9'0" x 6'3"
Bedroom 2	3.71m x 3.16m	12'2" x 10'4"
Bedroom 3	3.94m x 3.45m	12'11" x 11'4"
Bathroom	3.72m x 2.35m	12'2" x 7'9"



01872 830 014 | placesforpeople.co.uk/the-gwel
Higher Newham Farm, Truro, TR1 2SN