

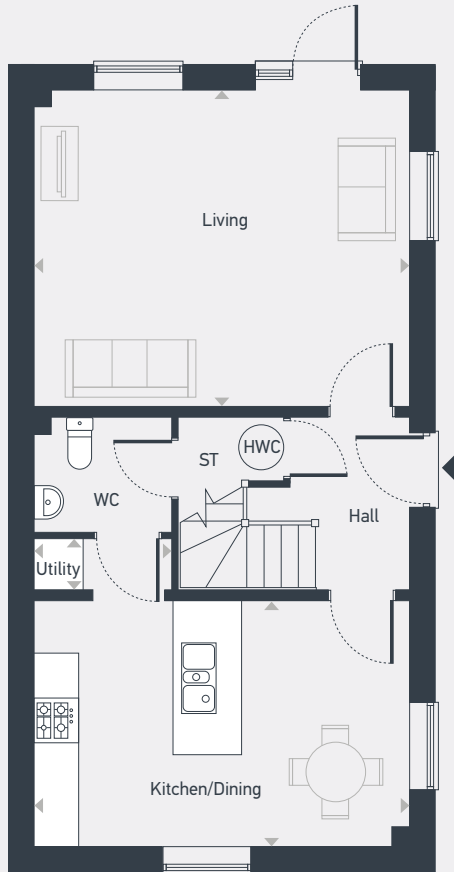
**The
Gwel**

**The Trevelyan
3 bedroom home**

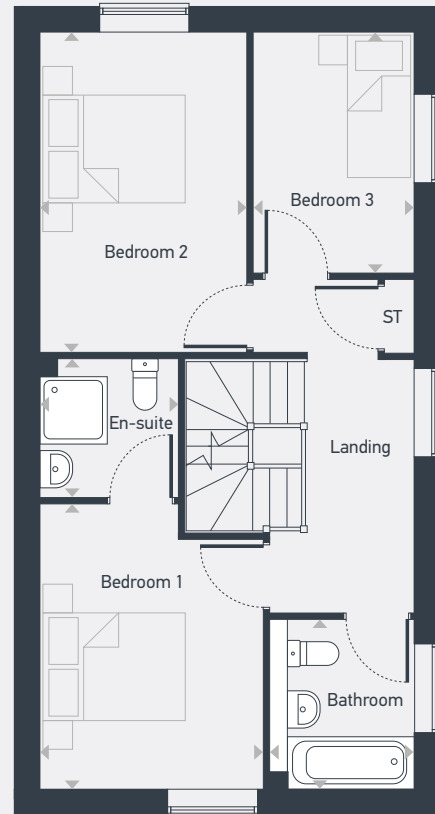


Plot as drawn: 188

101 sq.m / 1,087 sq.ft



GROUND FLOOR



FIRST FLOOR

ST: Store WC: Water Closet HWC: Hot Water Cylinder

DIMENSIONS	m	ft
Living	5.00m x 4.23m	16'5" x 13'10"
Kitchen/Dining	5.00m x 3.28m	16'5" x 10'9"
Utility	1.84m x 0.68m	6'0" x 1'3"

DIMENSIONS	m	ft
Bedroom 1	3.80m x 2.99m	12'6" x 9'9"
En-suite	1.85m x 1.62m	6'1" x 5'4"
Bedroom 2	4.27m x 2.76m	14'0" x 9'1"
Bedroom 3	3.21m x 2.15m	10'6" x 7'0"
Bathroom	2.26m x 1.93m	7'5" x 6'4"



01872 830 014 | placesforpeople.co.uk/the-gwel
Higher Newham Farm, Truro, TR1 2SN