

**The  
Gwel**

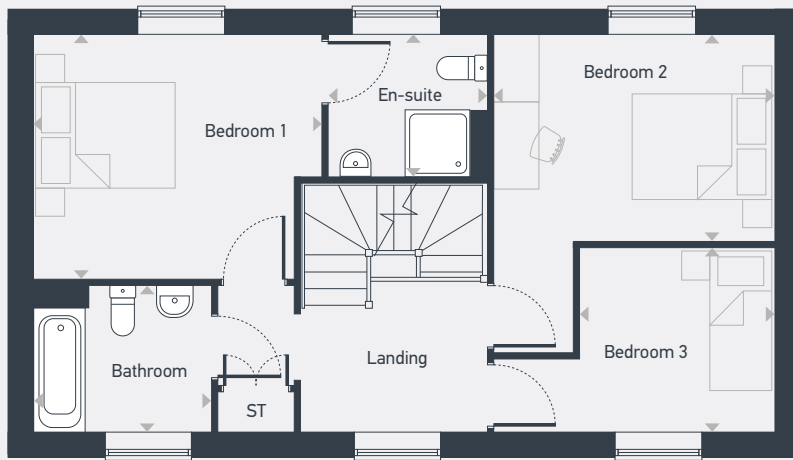
**The Kernow  
3 bedroom home**

---

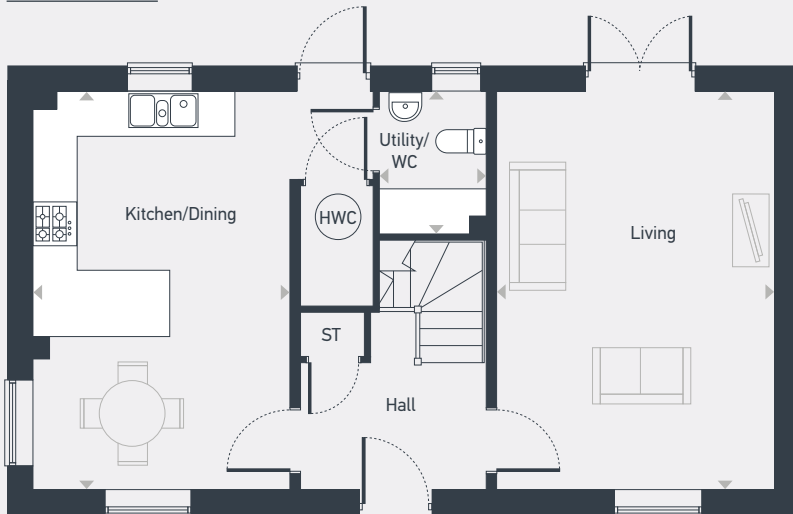


Plot as drawn: 193

109.0 sq.m / 1,173 sq.ft



FIRST FLOOR



GROUND FLOOR

ST: Store WC: Water Closet HWC: Hot Water Cylinder

DIMENSIONS	m	ft
Living	5.40m x 3.78m	17'9" x 12'4"
Kitchen/Dining	5.40m x 3.50m	17'9" x 11'6"
Utility/WC	1.92m x 1.45m	6'3" x 4'9"

DIMENSIONS	m	ft
Bedroom 1	3.93m x 3.31m	12'11" x 10'10"
En-suite	2.16m x 1.92m	7'1" x 6'3"
Bedroom 2	3.82m x 2.80m	12'6" x 9'2"
Bedroom 3	2.66m x 2.51m	8'9" x 8'3"
Bathroom	2.43m x 2.00m	7'11" x 6'7"



01872 830 014 | [placesforpeople.co.uk/the-gwel](https://placesforpeople.co.uk/the-gwel)  
Higher Newham Farm, Truro, TR1 2SN