

Welcome to Arkall Farm

Tamworth, B79 0AA

A collection of 2 and 3 bedroom
Shared Ownership homes.



bromfordhomes.co.uk/arkallfarm

On your doorstep

Arkall Farm is located close to the sought after cathedral city of Tamworth and offers a choice of 2 bedroom shared ownership homes. Designed and built by Morris Homes to meet the needs of modern living, these homes will appeal to first-time buyers, couples, and families looking for a little extra space.



**Tamworth
Railway Station**
1.4 miles



**Ventura
Retail Park**
2.4 miles



**M42
Junction 10**
5.9 miles

Local area connection

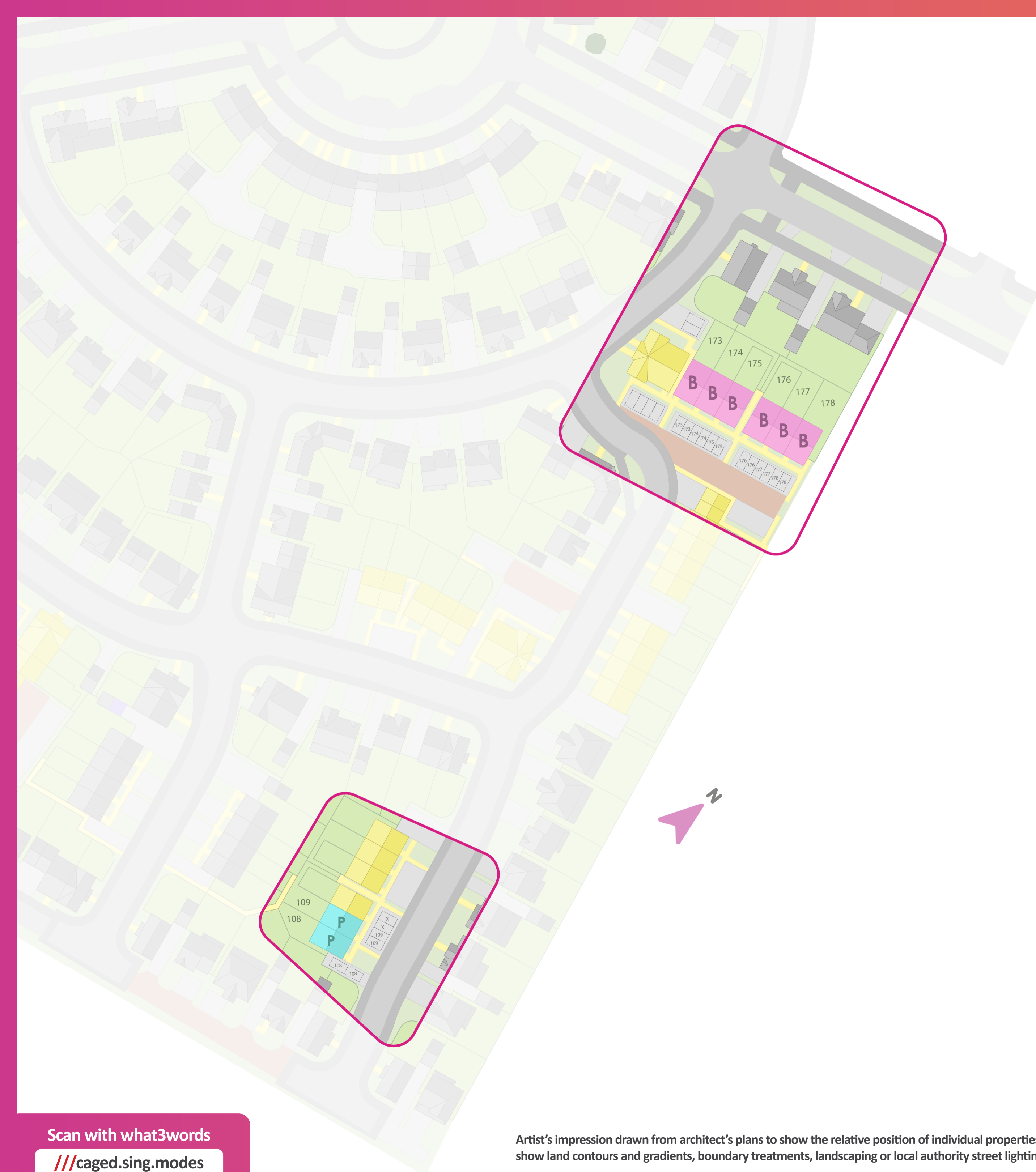
To meet the needs of local people most of our homes for sale require a local connection to the area. The connection criteria varies between sites, but generally it's based on:

- Being a resident (or employed within) the area for a number of years (usually between 2 to 5)
- Family connections – for example, parent, grandparent, child, grandchild or adult sibling – who have lived in the area for at least three years

For further information get in touch
with our Sales Consultant.

We follow Homes England Guidelines on First Come, First Served policies for Shared Ownership homes. Please visit [our policies page](#) for full policy details

Bromford.
Shared Ownership



- P** The Patterdale
2 bed home
- B** The Buxton
3 bed home
- Bromford
rented homes
- Morris Homes
or sold

Arkall Farm

Tamworth, B79 0AA

Scan with what3words

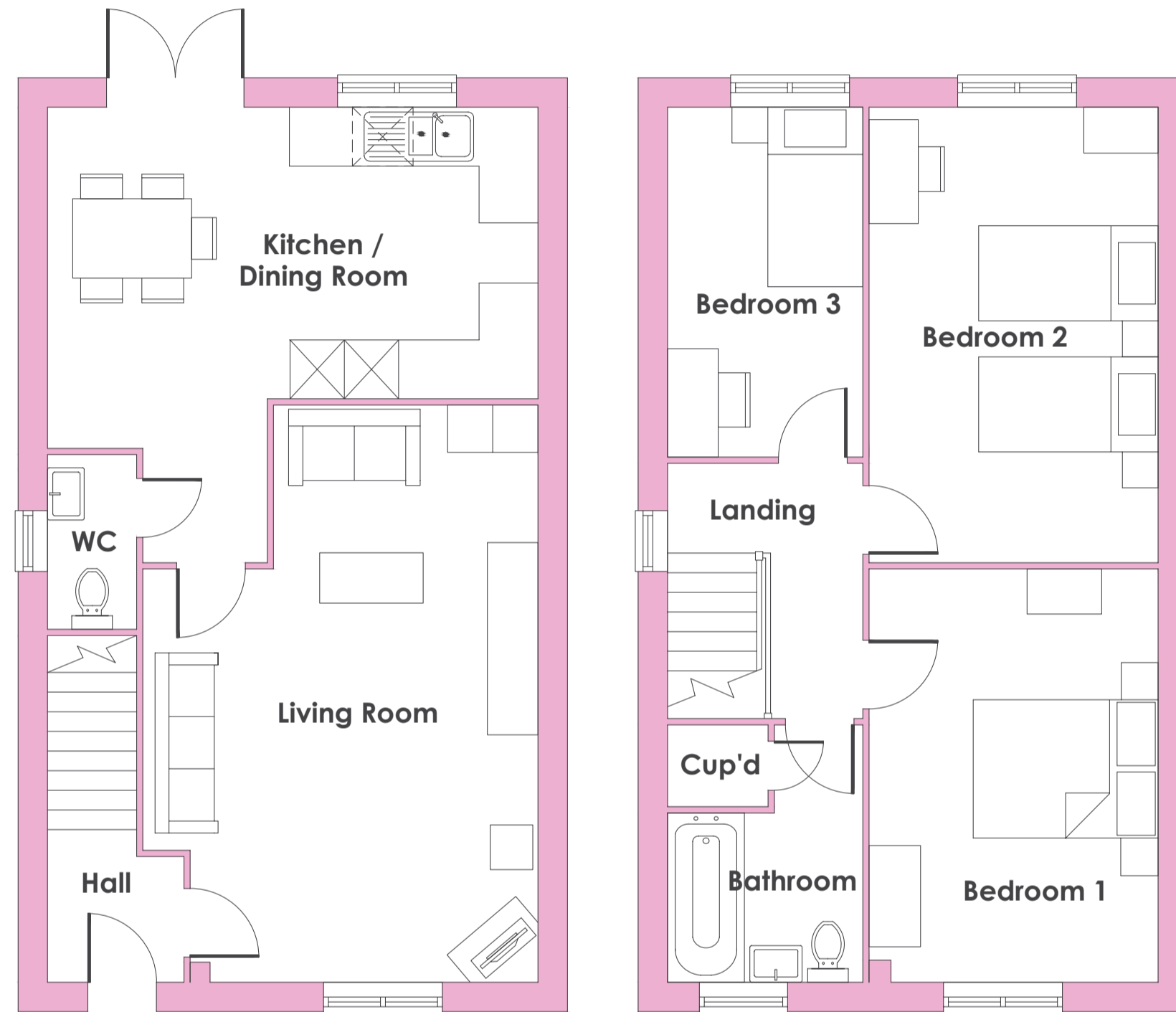
///caged.sing.modes

Artist's impression drawn from architect's plans to show the relative position of individual properties. NOT TO SCALE. This is a two dimensional drawing and will not show land contours and gradients, boundary treatments, landscaping or local authority street lighting. Please contact our sales team for more information.

Plots: 173 - 178

The Buxton

3 bedroom home



Ground floor

Kitchen / Dining

5.0m x 3.48m / 16'5" x 11'5"

Living room

5.88m x 4.09m / 19'4" x 13'5"

First floor

Bedroom 1

4.21m x 2.95m / 13'10" x 9'8"

Bedroom 2

4.64m x 2.95m / 15'3" x 9'8"

Bedroom 3

3.56m x 1.99m / 11'8" x 6'6"



3 bedrooms



Energy efficient



Turf to rear garden



10 Year NHBC warranty

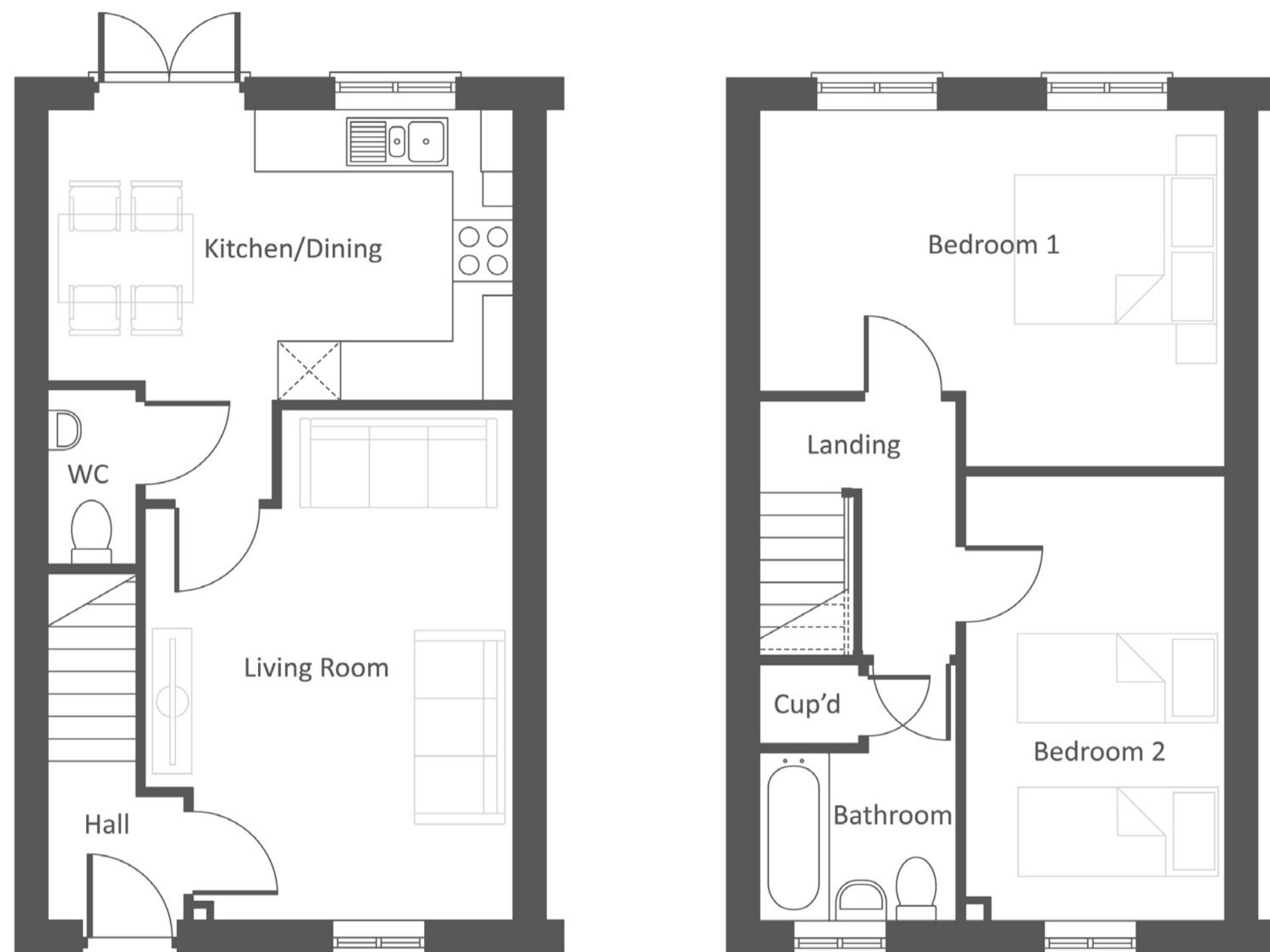


- Energy-efficient home
- Good sized lounge
- Open-plan kitchen-diner
- Integrated oven and hob
- Guest cloakroom
- Stylish family bathroom
- Private turfed rear garden
- Allocated parking

Plots: 108 & 109

The Patterdale

2 bedroom home



Ground floor

Kitchen/dining room

2.67m x 4.61m / 8'9" x 15'1"

Living room

4.09m x 3.63m / 13'5" x 11'10" (max)





First floor

Bedroom 1

3.58m x 4.61m / 11'8" x 15'2"

Bedroom 2

4.47m x 2.55m / 14'7" x 8'4"

-  X bedrooms
-  Energy efficient
-  Turf to rear garden
-  10 Year NHBC warranty



- Guest cloakroom
- Open plan kitchen diner with integrated appliances
- French doors to rear garden from kitchen
- Family bathroom with storage
- Full gas fired central heating
- Double glazing and high performance insulation throughout
- Allocated parking spaces
- Turfed rear gardens
- 10 years new home warranty



Who are we?

Since 1963 we have been providing customers with new and affordable homes. We want all of our customers to thrive and believe that with the right homes and someone who believes in their potential, almost anything is possible - with Bromford Shared Ownership we're helping more people than ever before to realise their dreams of owning their home.

Where does my money go when I buy a Bromford home? As a registered charity through the FCA registered societies, all the money Bromford makes goes back into the communities we work in and helps the people we work with thrive for a better safer life.



Shannon Way,
Ashchurch,
Tewkesbury,
GL20 8ND

0800 0852 499
sales@bromford.co.uk
bromfordhomes.co.uk



Follow us on TikTok

Visit the Home Ownership Hub to find out more about your new home
bromfordhomes.co.uk/home-ownership-hub



Bromford abides by the Consumer Protection from Unfair Trading Regulations 2008

Bromford.

Shared Ownership