

Prices
from
£111,750

Hazel End, Phase E

Cursoner Avenue, Fanshawe Way & Dickens Drive, Bishops Stortford, Hertfordshire

A brand-new development of 2, 3 & 4 bedroom homes

Trading as

settle.Paradigm



£ Prices from £111,750 (30% share)

% Share available **30%-75%**

🛏 2 & 3 bedrooms



Hazel End E KEY FEATURES

Bathroom suite and
thermostatic shower

Carpet fitted in bedrooms
& Landing

Tiled flooring in kitchen, vinyl
flooring throughout the
downstairs

Gas central heating

Allocated parking & Electric
Charge Point

Fitted kitchen with integrated
oven and hob

Integrated washing machine
and fridge freezer

PV Panels

A brand-new development with a collection of 2, 3 & 4 bedroom homes. Located on the doorstep is a 16 Acre country park with green open space. A new primary school and nursery located on the outskirts of the Development



These particulars do not constitute any part of an offer or contract. Any intended purchasers must satisfy themselves as to the correctness of each of the statements contained in these particulars. All floor layouts may be subject to changes. The dimensions given on the plan are subject to minor variations intended for guidance only and are not used for carpets, appliances or items of furniture.

SPECIFICATION

KITCHEN

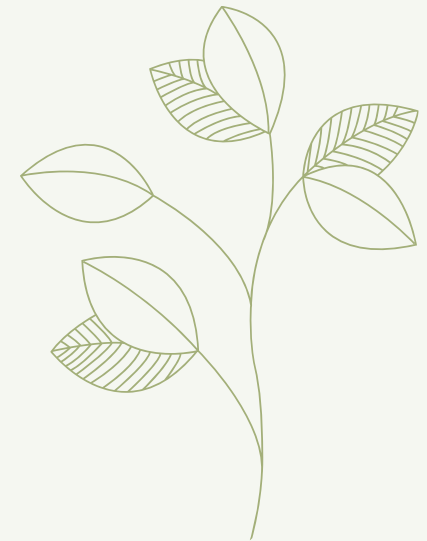
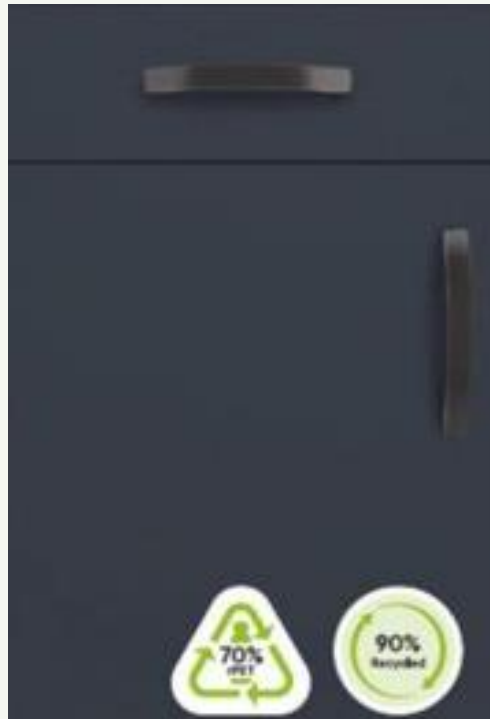
MANUFACTURER
Symphony kitchen, Urban

COLOUR
Indigo

HANDLES
Brushed bronze arched bridge handle

WORK TOP
Symphony kitchen, 40mm laminate Artic Marble

The specifications and information provided herein are for general informational purposes only and are subject to change without notice. Actual product colours may vary slightly due to differences in screen settings, lighting conditions, and the nature of physical materials. We strive for accuracy but cannot guarantee that digital imagery precisely reflects the final product.



SPECIFICATION

FLOORING

VINYL BRAND
Amtico

COLOUR
Trent Oak

CARPET BRAND
**Abingdon Oakdale Supreme
80/20**

COLOUR
Cool Slate



The specifications and information provided herein are for general informational purposes only and are subject to change without notice. Actual product colours may vary slightly due to differences in screen settings, lighting conditions, and the nature of physical materials. We strive for accuracy but cannot guarantee that digital imagery precisely reflects the final product.



Two Bed House Plots 512* , 513,& 523* (* handed)

KITCHEN AREA
6'0" x 12'4" 1.85m x 3.78m

LIVING ROOM
14'2" x 14'8" 4.32m x 4.48m

BEDROOM 1
14'2" x 10'3" 4.32m x 3.14m

BEDROOM 2
14'4" x 9'1" 4.37m x 2.78m



GROUND FLOOR



FIRST FLOOR

These particulars do not constitute any part of an offer or contract. Any intended purchasers must satisfy themselves as to the correctness of each of the statements contained in these particulars. All floor layouts may be subject to changes. The dimensions given on the plan are subject to minor variations intended for guidance only and are not to be used for carpets, appliances or items of furniture.





Three Bed House Plots 487, 518*, 521 & 522* (* handed)

KITCHEN/DINING
16'11" x 10'11" 5.16m x 3.35m

LIVING ROOM
10'0" x 10'7" 3.07m x 3.24m

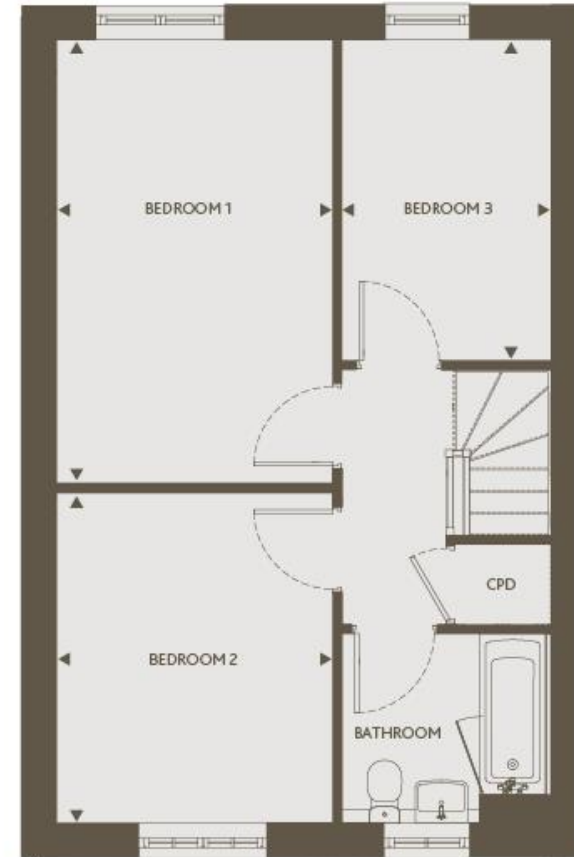
BEDROOM 1
9'6" x 15'2" 2.92m x 4.63m

BEDROOM 2
9'6" x 11'5" 2.92m x 3.49m

BEDROOM 3
7'2" x 11'1" 2.20m x 3.38m



GROUND FLOOR



FIRST FLOOR

These particulars do not constitute any part of an offer or contract. Any intended purchasers must satisfy themselves as to the correctness of each of the statements contained in these particulars. All floor layouts may be subject to changes. The dimensions given on the plan are subject to minor variations intended for guidance only and are not to be used for carpets, appliances or items of furniture.

* no window in living room to plots 521 & 522





Three Bed House Plot 517*

(* handed)

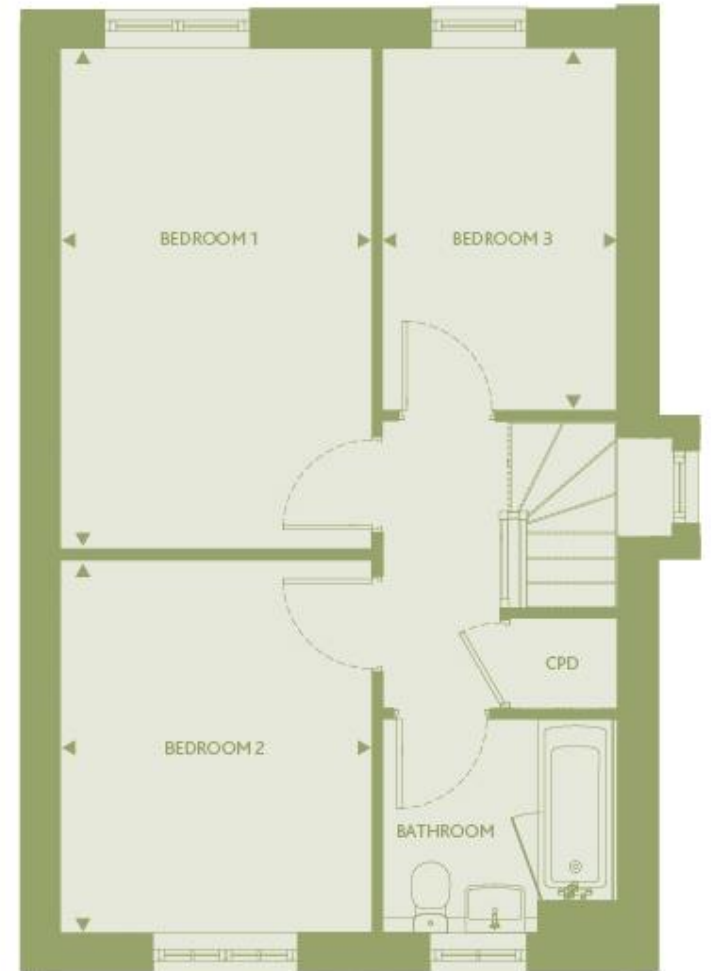
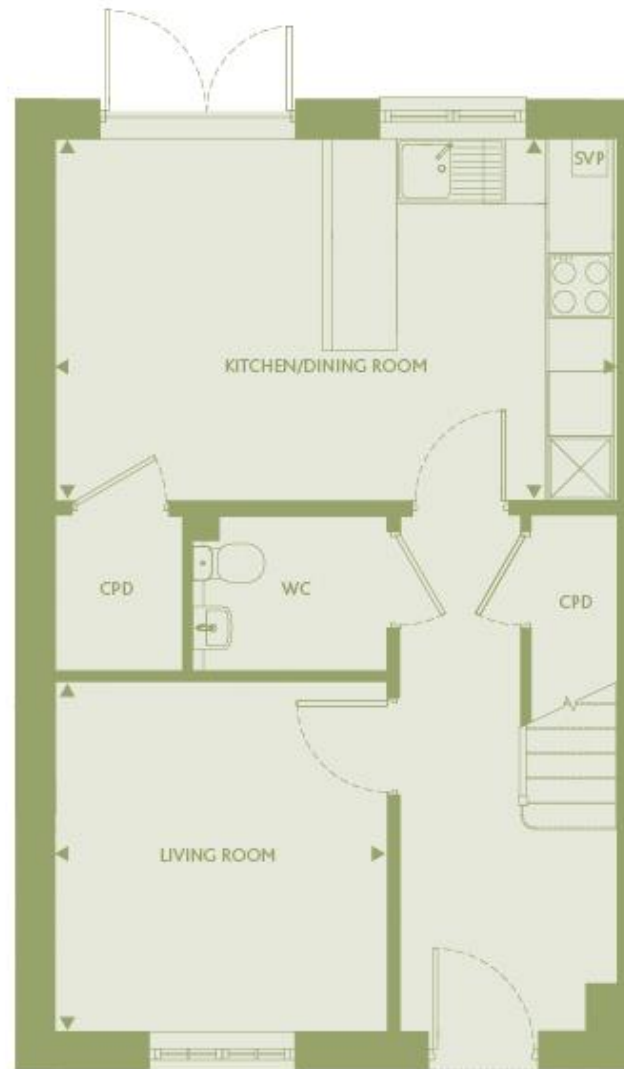
KITCHEN/DINING
16'11" x 10'11" 5.16m x 3.35m

LIVING ROOM
10'0" x 10'7" 3.07m x 3.24m

BEDROOM 1
9'6" x 15'2" 2.92m x 4.63m

BEDROOM 2
9'6" x 11'5" 2.92m x 3.49m

BEDROOM 3
7'2" x 11'1" 2.20m x 3.38m





Three Bed House Plots 488*

(* handed)

KITCHEN/DINING

16'10" x 9'11" 5.11m x 3.02m

LIVING ROOM

16'10" x 11'8" 5.11m x 3.57m

BEDROOM 1

16'10" x 9'3" 5.11m x 2.83m

BEDROOM 2

8'3" x 10'0" 2.51m x 3.05m

BEDROOM 3

8'3" x 10'0" 2.51m x 3.05m



GROUND FLOOR



FIRST FLOOR

These particulars do not constitute any part of an offer or contract. Any intended purchasers must satisfy themselves as to the correctness of each of the statements contained in these particulars. All floor layouts may be subject to changes. The dimensions given on the plan are subject to minor variations intended for guidance only and are not to be used for carpets, appliances or items of furniture.






SITE PLAN



Key:

 Affordable rented properties

These particulars do not constitute any part of an offer or contract. Any intended purchasers must satisfy themselves as to the correctness of each of the statements contained in these particulars. All floor layouts may be subject to changes. The dimensions given on the plan are subject to minor variations intended for guidance only and are not to be used for carpets, appliances or items of furniture.



SITE PLAN



Key:

 Affordable rented properties

These particulars do not constitute any part of an offer or contract. Any intended purchasers must satisfy themselves as to the correctness of each of the statements contained in these particulars. All floor layouts may be subject to changes. The dimensions given on the plan are subject to minor variations intended for guidance only and are not to be used for carpets, appliances or items of furniture.

Trading as
settle,Paradigm

For more information

0300 303 8046

www.settlesales.co.uk

