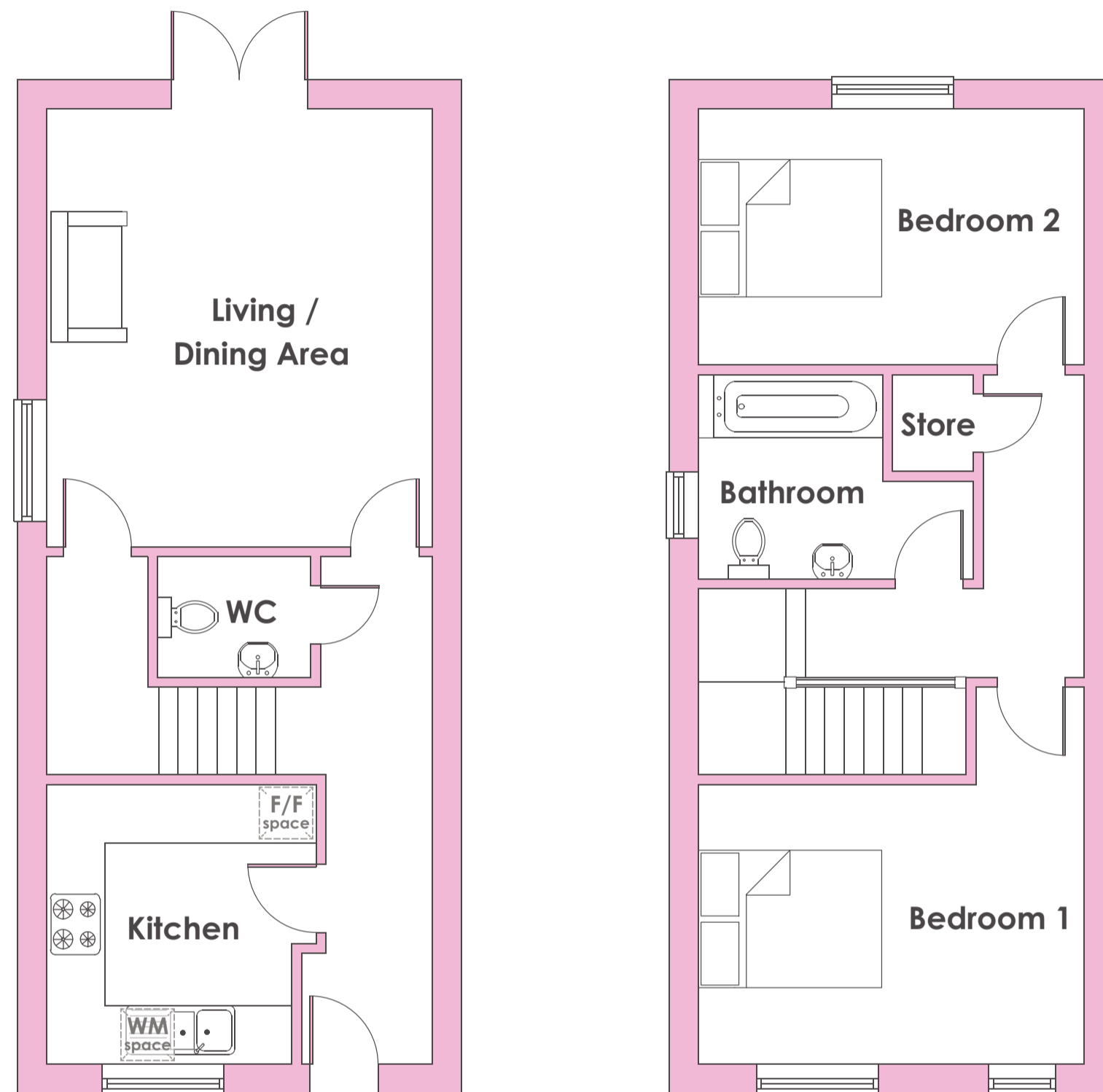


The Buttercup

2 bedroom house

bromfordhomes.co.uk/beaconheights

0800 0852 499



Ground floor

Kitchen

2.87m x 2.52m / 9'5" x 8'3"

Living / Dining Area

4.50m x 3.93m / 14'9" x 12'11"

First floor

Bedroom 1

3.93m x 2.87m / 12'11" x 9'5"

Bedroom 2

3.93m x 2.63m / 12'11" x 8'8"



Beacon Heights
Thirstane Road, Malvern, WR14 3PS

Due to the nature of construction room sizes, window positions, window and door styles, brick and tile colours, elevational treatments and external landscaping may vary. Purchasers are advised to satisfy themselves as to their accuracy and are not intended to be used for carpet sizes, appliance spaces or items of furniture. Floor areas are measured at widest point. Please speak with your sales consultant for individual plot, electrical, heating and kitchen spec information. Images for illustrative purposes only. Please refer to working drawings for boiler location. We follow Homes England Guidelines on First Come, First Served policies for Shared Ownership homes. Please visit [our policies page](#) for full policy details.

sales@bromford.co.uk



Follow us on TikTok

Bromford.
Shared Ownership

Part of
bfl Bromford
Flagship
LiveWest