

Sresi[®] Cambourne

Making Home Ownership Possible



SO Resi is a new way of making home ownership possible for more people. You buy a share of your home, with a lower deposit, smaller mortgage and monthly payment on the rest.

SO Resi redefines shared ownership, by making everything clear and uncomplicated, so you understand how it all works at every stage, before and after you buy. Our SO Resi homeowners are important to us and we aim to build strong, lasting relationships by being here to answer your questions in a language that makes sense.

SO Resi by Metropolitan Thames Valley, a not-for-profit housing association. For over fifty years we've been building good quality, affordable new homes and managing them well. By doing that, we've been helping to create communities where people are proud and happy to live.

A thriving modern community

Our handpicked selection of one, two, three and four bedroom apartments and houses sits within a new development just nine miles from Cambridge and a short journey from King's Cross by rail.

The grasslands, wetlands, woodland and lakes that surround Cambourne belie its modern convenience – with an enviable selection of eateries, shops, sports and wellness facilities, primary schools and an Ofsted-outstanding college.

Come home to your very own private parking spot or allocated parking bay, enjoy stylish kitchen units, modern worktops and bathroom tiles – all standard features of homes that are anything but.

A collection of 1, 2, 3 and 4 bedroom apartments and houses

The area	4
Development overview	8
Connectivity	14
Specification	16
Plans	19



Heart and soul – built in

With a name that blends ‘Cambridge’ with the nearby village of ‘Bourn’, Cambourne is a well-established, growing development of tasteful homes surrounded by acres of fields and nature reserve. First impressions count, so the gently curving streets of the town’s newest area – Cambourne West – will branch off from a crescent of attractive homes overlooking an ornamental lake.

It’s here you’ll discover a variety of property sizes – from family-friendly two, three and four-beds to our stylish 1-bedroom apartments. Joining four well respected and established local schools will be two brand new primaries, plus families will love the play areas, allotments and nature areas dotted in and around the development.

With Cambridge, St Neots and plenty of pretty villages so close by, it’s easy to tap into all that city and county have to offer. Energise at one of many local sports and fitness facilities, soak up the culture of Cambridge city, browse its stylish Grand shopping Arcade or while away a day punting along Cambridge’s College Backs. Go rural for gastropub fayre or grab a bite locally from one of Cambourne’s many eateries and takeaways. Whatever gets you up in the morning, Cambourne’s got every reason to set your alarm that little bit earlier.



Book a table at The Eight Bells for Sunday lunch, only an 9 minute drive from SO Resi Cambourne.

Travel times by Google maps.



“The food was extremely memorable and the cocktails were superb!!”

The Topsy Vegan Cambridge,
Trip Advisor





1



2



4



6



3



5

Explore the local area

1

Cambridge Country Club

Golf, gym or swim – whatever floats your boat, Cambridge Country Club has it covered. Perfect your swing on an immaculate, 18-hole par 72 green, energise body and mind in a state-of-the-art gym or relax and unwind for a few hours in the pool and spa. The choice is all yours.

 17 minutes

Travel times by Google maps.

2

CryptX Escape Rooms

Peel the kids off the sofa, grab your partner or rope in your friends and colleagues – and test out your teamworking and puzzle-solving skills. Each hour-long escape room is uniquely designed and themed by CryptX, with against-the-clock challenges and exciting mysteries you'll simply *have* to solve... eventually.

 8 minutes

3

Lets Go Punting

Why watch from the riverbanks when you can take a top-rated tour along Cambridge's College Backs for yourself? Let's Go Punting offer shared and private chauffeured tours, as well as special events at key times of year, such as the Trinity & St Johns's famous (and ever-more competitive) end-of-year fireworks. Straw hats optional.

 51 minutes

4

Grand Arcade

This stylish, award-winning shopping centre in the heart of Cambridge is home to an unrivalled mix of 60 premium and high street retailers, located over two stunningly sky-lit floors. It's year-round sunshine for shopaholics – whatever the British weather decides to do.

 24 minutes

5

The Willow Tree

Whether you book an outside pod, a party in the tepee or a table in their chic and cosy restaurant, The Willow Tree's team of expert chefs have lovingly curated a menu bursting with seasonal, local produce and intriguing flavour combinations. The perfect place to celebrate any occasion... and yes, Fridays count!

 12 minutes

6

Southlake Aqua Park

There's no upper age limit for Cambridgeshire's latest and greatest activity – an outdoor course of inflatable slides, platforms and swimming areas in St Neot's Paxton Lakes. A hilarious and exhilarating day out for the whole family, with buoyancy aids and a guaranteed good night's sleep all part of the price.

 22 minutes



Cambourne overview

The West Cambourne masterplan provides a holistically designed sustainable 2,350 home extension to Cambourne, built between 2008 and 2018 and now an established community.

West Cambourne will benefit from two new primary schools and a secondary school planned, local shops, business parks, play spaces, sports pitches, and a community centre, allotments, an extensive network of new woodlands, lakes, wetlands, grasslands and nature areas. Your search ends here!

Key

- SO Resi units
- SO Flexi units
- Play area

The site layout is intended for illustrative purposes only and is subject to change.



Development overview



Sat Nav location
CB23 3PG

At SO Resi, we know there's more to a three-bedroom home than its three bedrooms. That's why we have a selection of shared-ownership' properties in Cambourne, with a mix of 1, 2, 3 and 4 bedroom homes. Some have garages and all houses have gardens – with private parking. Built to a high specification with a choice of contemporary fixtures and fittings, a SO Resi home brings a sense of luxury to your day-to-day.

Demand for properties in Cambourne West has been high from day one, thanks to a thriving regional economy, local transport projects, new cycle paths and walking routes in full swing – not to mention the success and popularity of Cambourne's well-established existing development. With two new primary schools and an extension to the secondary school planned, a bustling local high street, business parks, numerous play areas, sports pitches, allotments and nature reserves, you'll have everything on hand to work, live and play *your* way.

Key

- SO Resi units
- SO Flexi units
- Cycle store
- Bin store
- ★ Sales office
- + Car Port/Barn

The site layout is intended for illustrative purposes only and is subject to change.

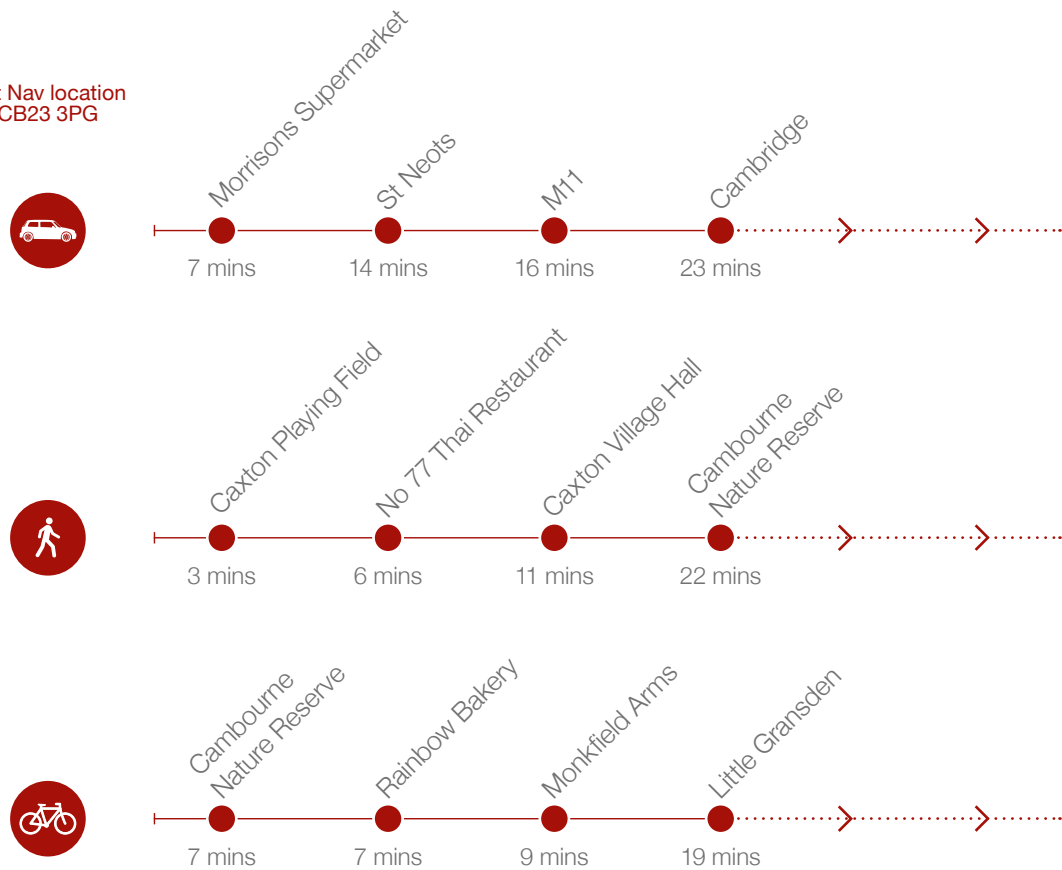


Sleek
and stylish

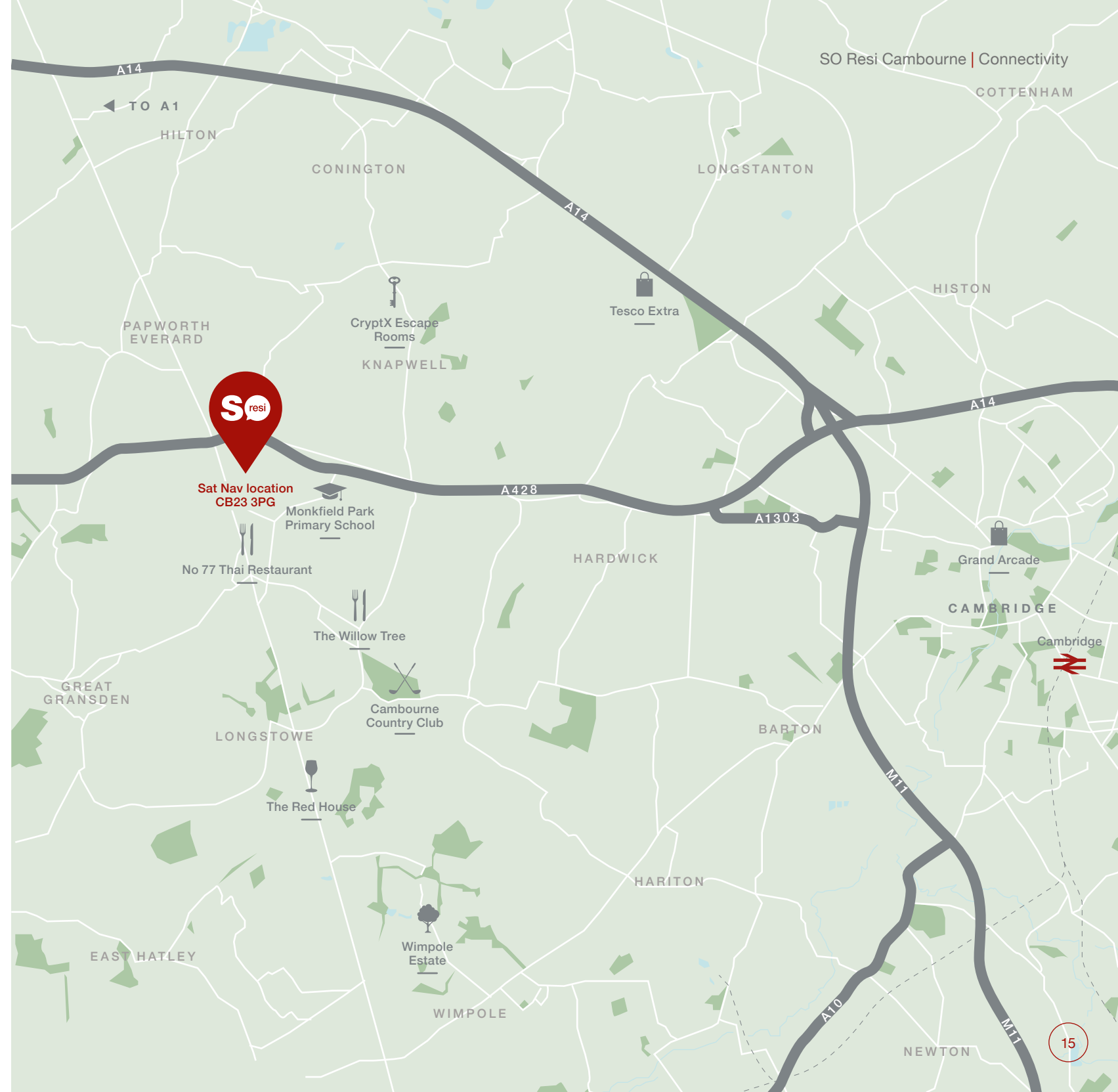
Effortless connections

It's hard to believe that a new development so ideally connected with the cities of Cambridge and London could also be home to wildflower meadows, wetlands full of wildfowl and woodlands harbouring rare and special species. Managed by the Wildlife Trust, Cambourne's network of nature areas incorporate wheelchair and buggy-friendly walks, tranquil waters and birdwatching opportunities galore – a space to decompress from the pace of modern life.

Sat Nav location
CB23 3PG



Times taken from Google Maps.



SO Resi Cambourne | Connectivity

COTTENHAM

HILTON

CONINGTON

LONGSTANTON

PAPWORTH EVERARD

CryptX Escape Rooms

Tesco Extra

KNAPWELL

HISTON



Sat Nav location
CB23 3PG

Monkfield Park Primary School

No 77 Thai Restaurant

HARDWICK

Grand Arcade

CAMBRIDGE

Cambridge

GREAT GRANSDEN

The Willow Tree

Cambourne Country Club

BARTON

LONGSTOWE

The Red House

HARITON

EAST HATLEY

Wimpole Estate

WIMPOLE

NEWTON

Your home, your way

Whether you opt for house or maisonette living, all our properties come with spacious kitchen-diners, fitted kitchens and off-street parking - all standard features of homes that are anything but.

Designed with comfort in mind, SO Resi Cambourne homes are designed to maximise space, and offer low maintenance, modern living.

Bathroom

- Ecochrome thermostatic shower
- Heated chrome towel rail for houses
- Shaver sockets
- Synergy angle shower & bath screen

Kitchen

- Moore's Zurich Gloss kitchen
- Integrated Bosch dishwasher
- Integrated Bosch fridge freezer and washing machine
- Karndean flooring
- Bosch oven and ceramic hob

General

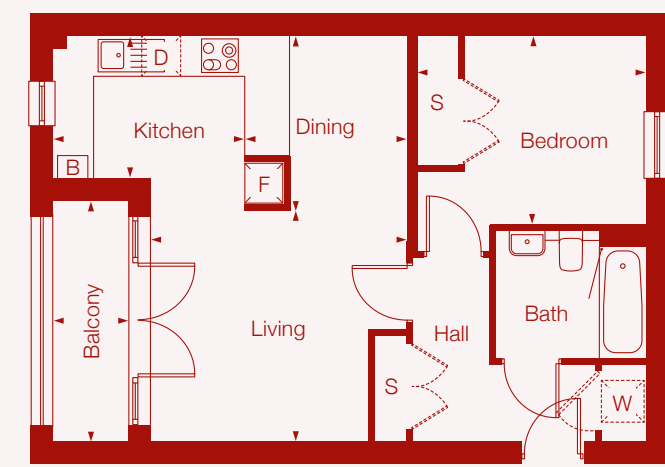
- Karndean flooring in cloakrooms and bathrooms
- 80/20 carpets in bedrooms
- TV point in bedroom 1 and living rooms
- Integrated reception system* (apartments only) (satellite and terrestrial television)
- Matt white painted ceilings and walls
- Chrome finish pendant lights in cloakroom, hall and landing
- Cycle storage



* Satellite and aerial not provided. Specifications stated in this brochure are for guidance only. These particulars do not constitute any part of an offer or contract and are subject to change.



Type 1
1 Bedroom Apartment

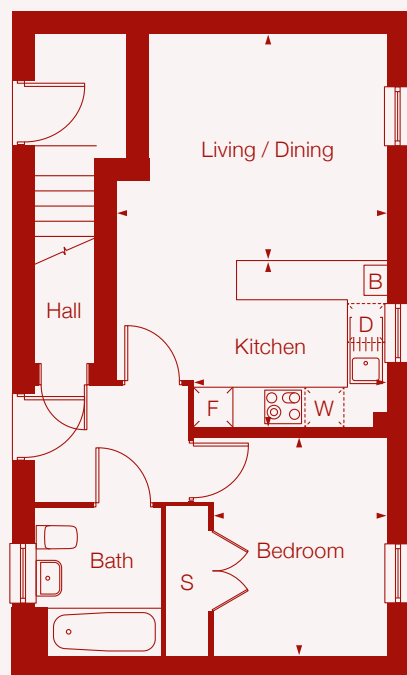


Plot	Floor	Room	Metric	Imperial	
1935	G	Living	3.85m x 3.47m	12'8" x 11'5"	[S] Storage
1937	1	Dining	1.77m x 2.61m	5'10" x 8'7"	[F] Fridge Freezer
1939	2	Kitchen*	3.53m x 2.61m	11'7" x 8'7"	[W] Washer
		Bedroom	3.43m x 2.83m	11'3" x 9'4"	[B] Boiler
		GlA	48.4m ²		[D] Dishwasher

*Kitchen layouts including cupboards and appliances are subject to change.

Type 2

1 Bedroom
Maisonette



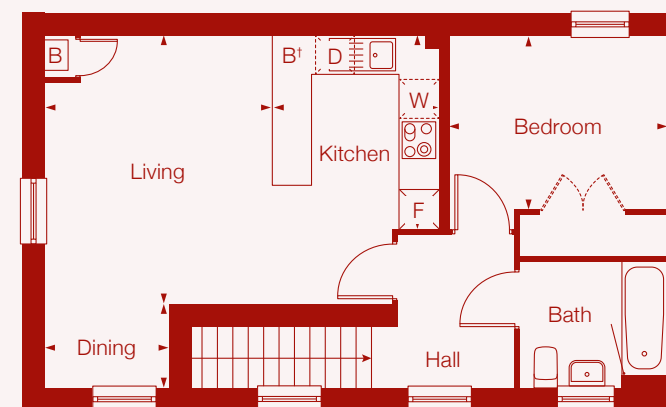
Plot	Floor	Room	Metric	Imperial
1990	G	Living / Dining	3.4m x 4.04m	11'2" x 13'3"
1992	G	Kitchen*	2.5m x 2.9m	8'3" x 9'7"
		Bedroom	3.26m x 2.61m	10'9" x 8'7"
		GIA	43.2m ²	

- F Fridge Freezer
- W Washer
- B Boiler
- D Dishwasher

*Kitchen layouts including cupboards and appliances are subject to change.

Type 3

1 Bedroom
Maisonette

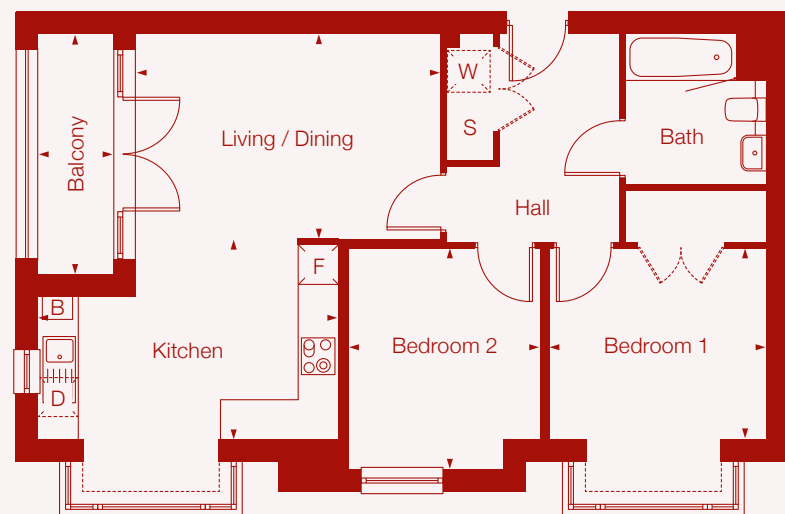


Plot	Floor	Room	Metric	Imperial
1993	1	Living	3.4m x 4.04m	11'2" x 13'3"
1991 [†]	1	Dining	1.86m x 1.25m	6'1" x 4'1"
		Kitchen*	2.5m x 2.9m	8'3" x 9'7"
		Bedroom	3.29m x 2.61m	10'10" x 8'7"
		GIA	52.2m ²	

- F Fridge Freezer
- W Washer
- B Boiler
- D Dishwasher

*Kitchen layouts including cupboards and appliances are subject to change.
[†]Indicates boiler position for plot 1991

Type 4
2 Bedroom
Apartment

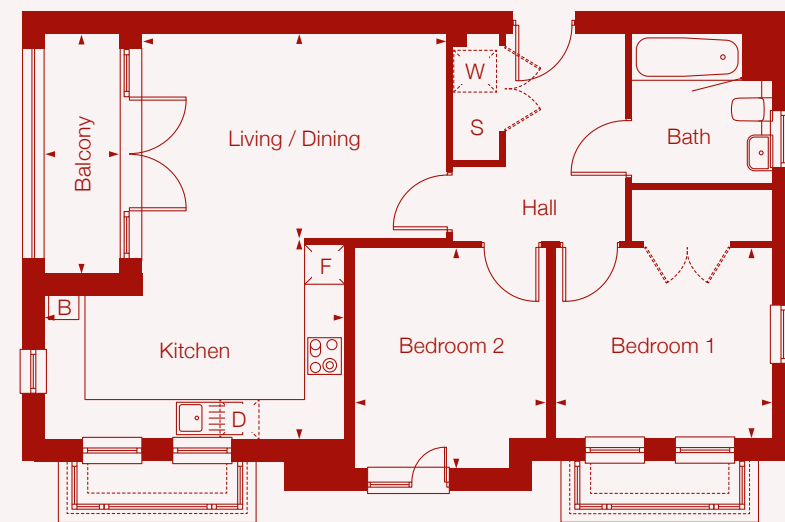


Plot	Floor	Room	Metric	Imperial
1934	G	Living / Dining	4.58m x 3.08m	15'1" x 10'2"
		Kitchen*	4.5m x 3m	14'9" x 9'10"
		Bedroom 1	3.26m x 2.87m	10'9" x 9'5"
		Bedroom 2	2.88m x 3.32m	9'6" x 10'11"
		GIA	64.6m ²	

- F Fridge Freezer
- W Washer
- B Boiler
- D Dishwasher
- S Storage

*Kitchen layouts including cupboards and appliances are subject to change.

Type 5
2 Bedroom
Apartment



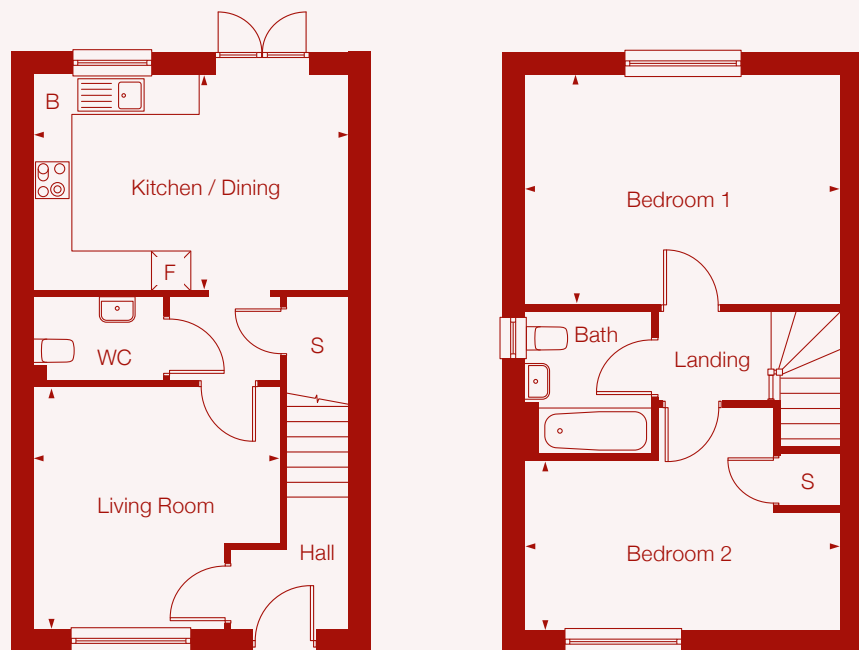
Plot	Floor	Room	Metric	Imperial
1936	1	Living / Dining	4.58m x 3.08m	15'1" x 10'2"
1938	2	Kitchen*	4.5m x 3m	14'9" x 9'10"
		Bedroom 1	3.26m x 2.87m	10'9" x 9'5"
		Bedroom 2	2.88m x 3.32m	9'6" x 10'11"
		GIA	61.4m ²	

- F Fridge Freezer
- W Washer
- B Boiler
- D Dishwasher
- S Storage

*Kitchen layouts including cupboards and appliances are subject to change.

Type 6

2 Bedroom
End-Terrace



Ground

First Floor

Plot
1996
1999

Room	Metric	Imperial
Living Room	3.72m x 3.65m	12'2" x 12'
Kitchen* / Dining	4.74m x 3.25m	15'7" x 10'8"
Bedroom 1	4.74m x 3.45m	15'7" x 11'4"
Bedroom 2	2m x 2.56m	13'2" x 8'5"
GIA	79.06m ²	

- F Fridge Freezer
- W Washer
- B Boiler
- D Dishwasher
- S Storage

*Kitchen layouts including cupboards and appliances are subject to change.

Type 7

3 Bedroom



Ground

First Floor

Plot
1954 SD
1958 EOT
1961 EOT
2023 SD
2029 SD
2031 MT
2032 EOT

Room	Metric	Imperial
Living Room	4.98m x 3.19m	16'4" x 10'6"
Kitchen*	2.8m x 2.5m	9'2" x 8'3"
Dining	2.8m x 2.28m	9'2" x 7'6"
Bedroom 1	2.77m x 2.71m	9'1" x 8'11"
Bedroom 2	2.77m x 2.86m	9'1" x 9'6"
Bedroom 3	2.12m x 3.19m	7' x 10'6"
GIA	80.37m ²	

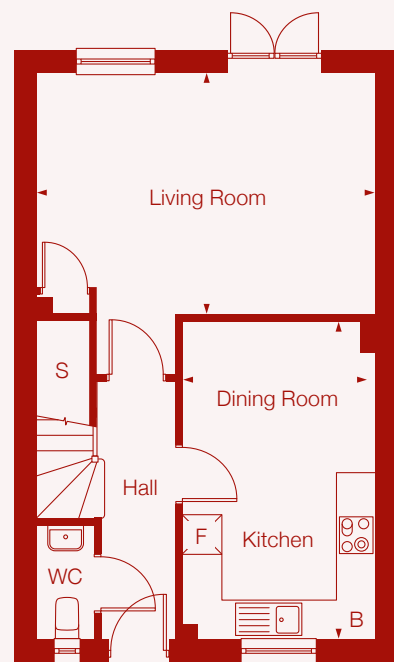
- F Fridge Freezer
- W Washer
- B Boiler
- D Dishwasher
- S Storage

*Kitchen layouts including cupboards and appliances are subject to change.
MT = Mid Terrace | EOT = End of Terrace | SD = Semi Detached

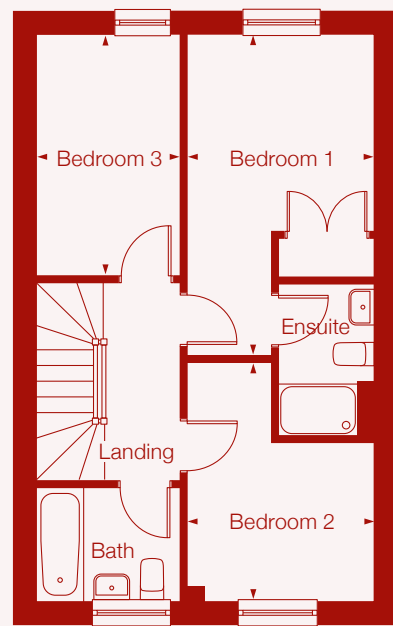


Type 8

3 Bedroom Semi-Detached



Ground



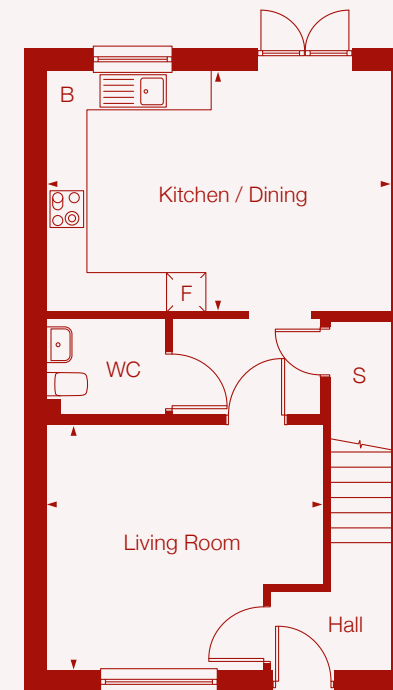
First Floor

Plot	Room	Metric	Imperial	
1952	Living Room	5.09m x 3.63m	16'9" x 11'11"	[F] Fridge Freezer
1953	Kitchen*	2.91m x 2.49m	9'7" x 8'2"	[W] Washer
2012	Dining	2.91m x 2.26m	9'7" x 7'5"	[B] Boiler
2013	Bedroom 1	2.85m x 3.66m	9'4" x 12'	[D] Dishwasher
2024	Bedroom 2	2.85m x 2.37m	9'4" x 7'9"	[S] Storage
2025	Bedroom 3	2.15m x 3.64m	7'1" x 12'	
2026	GIA	86.77m ²		
2027				

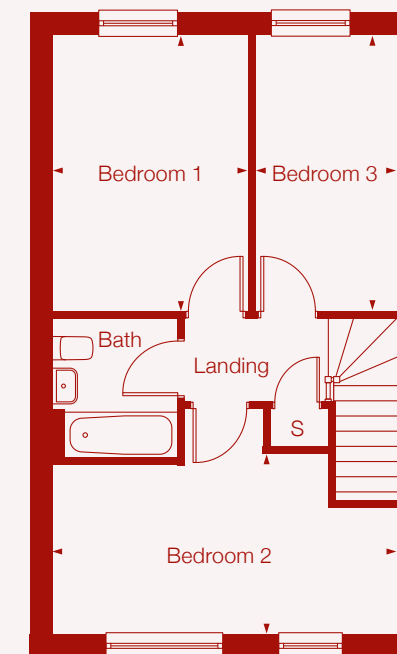
*Kitchen layouts including cupboards and appliances are subject to change.

Type 9

3 Bedroom Semi-Detached



Ground



First Floor

Plot	Room	Metric	Imperial	
1967	Living Room	4.17m x 3.69m	13'8" x 12'1"	[F] Fridge Freezer
1968	Kitchen* / Dining	5.19m x 3.63m	17' x 11'11"	[W] Washer
	Bedroom 1	2.95m x 4.15m	9'8" x 13'7"	[B] Boiler
	Bedroom 2	4.5m x 2.55m	14'9" x 8'5"	[D] Dishwasher
	Bedroom 3	2.15m x 4.15m	7'1" x 13'7"	[S] Storage
	GIA	93.58m ²		

*Kitchen layouts including cupboards and appliances are subject to change.

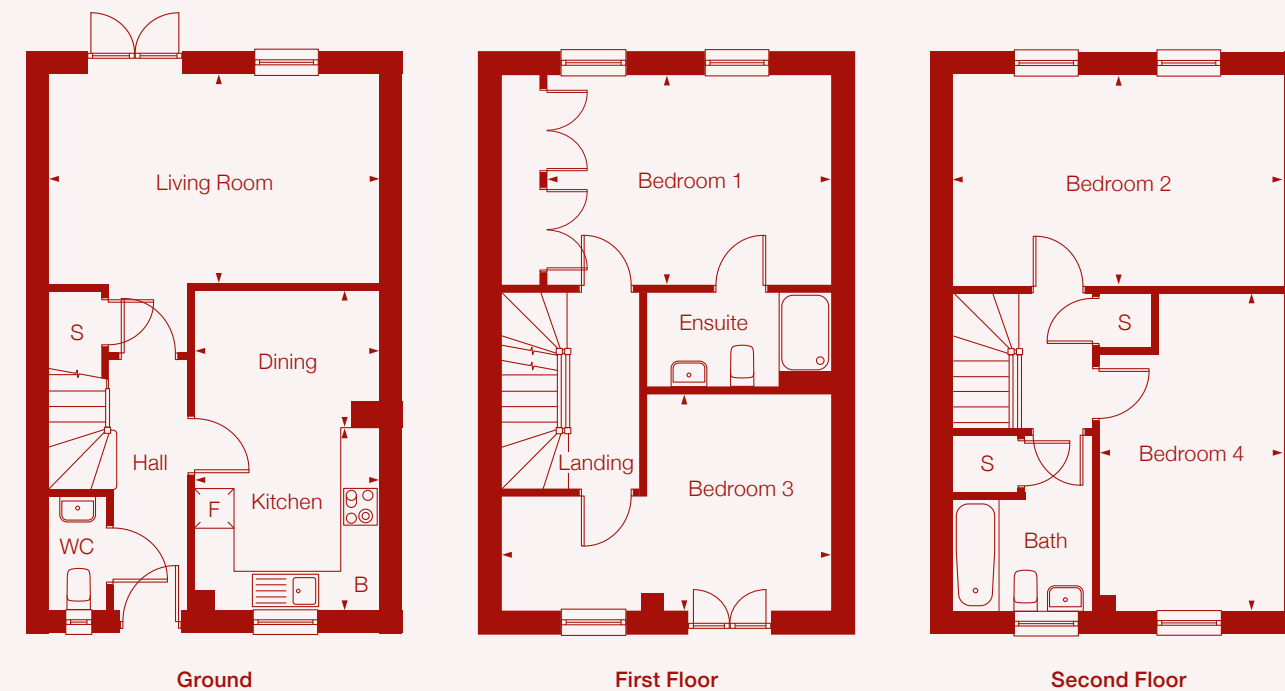
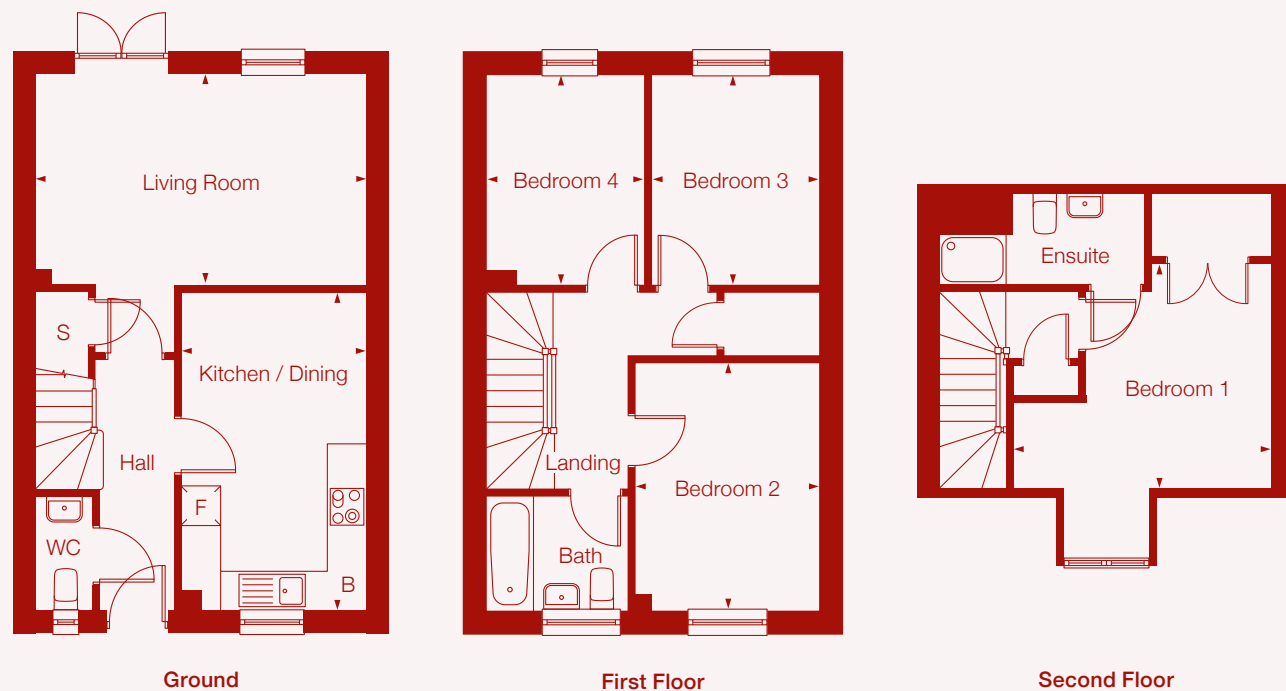


Type 10

4 Bedroom

Type 11

4 Bedroom
Semi-Detached



Plot	Room	Metric	Imperial
1943 SD	Living Room	4.98m x 3.2m	16'4" x 10'6"
1944 SD	Kitchen* / Dining	2.8m x 4.76m	9'2" x 15'8"
1959 MT	Bedroom 1	3.88m x 4.29m	12'9" x 14'1"
1960 MT	Bedroom 2	2.77m x 3.74m	9'1" x 12'3"
2008 SD	Bedroom 3	2.52m x 3.19m	7'9" x 10'6"
	Bedroom 4	2.12m x 1.73m	7' x 5'8"
	GIA	103m ²	

- F Fridge Freezer
- W Washer
- B Boiler
- D Dishwasher
- S Storage

*Kitchen layouts including cupboards and appliances are subject to change.
MT = Mid Terrace | EOT = End of Terrace | SD = Semi Detached

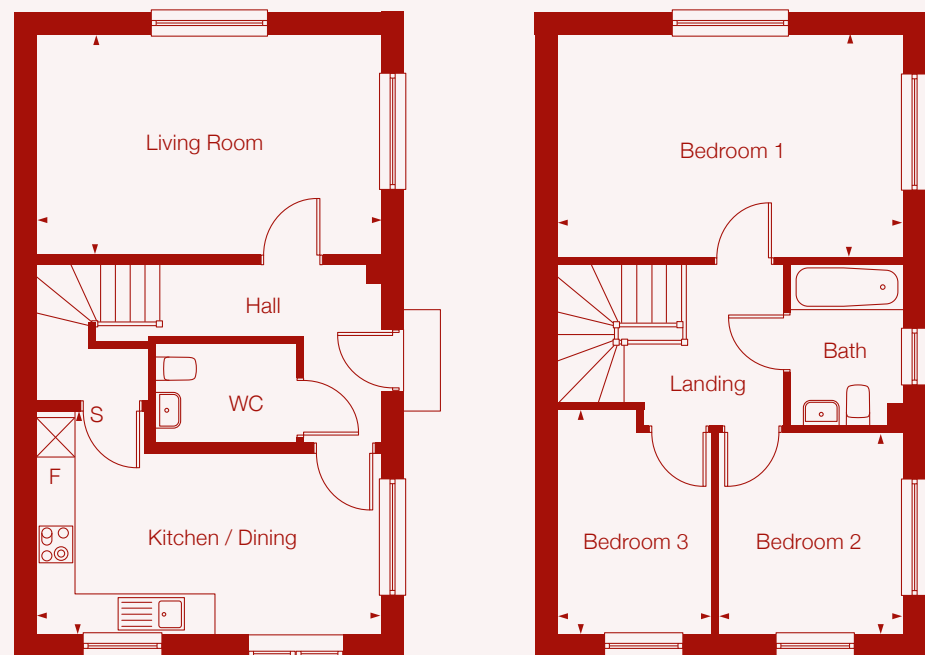
Plot	Room	Metric	Imperial
1926	Living Room	4.98m x 3.16m	16'4" x 10'4"
1927	Kitchen*	2.8m x 2.74m	9'2" x 9'
1928	Dining	2.8m x 2.07m	9'2" x 6'10"
1929	Bedroom 1	4.98m x 3.19m	16'4" x 10'6"
1930	Bedroom 2	4.98m x 3.19m	16'4" x 10'6"
1931	Bedroom 3	4.98m x 3.26m	16'4" x 10'9"
	Bedroom 4	2.78m x 4.78m	9'2" x 15'8"
	GIA	120.57m ²	

- F Fridge Freezer
- W Washer
- B Boiler
- D Dishwasher
- S Storage

*Kitchen layouts including cupboards and appliances are subject to change.

Type 12

3 Bedroom Detached



Ground

First Floor

Plot

1940
1997
1998

Room

Living Room
Kitchen* / Dining
Bedroom 1
Bedroom 2
Bedroom 3
GIA

Metric

5.19m x 3.32m
5.19m x 3.35m
5.19m x 3.34m
2.77m x 3.06m
2.32m x 3.38m
93.58m²

Imperial

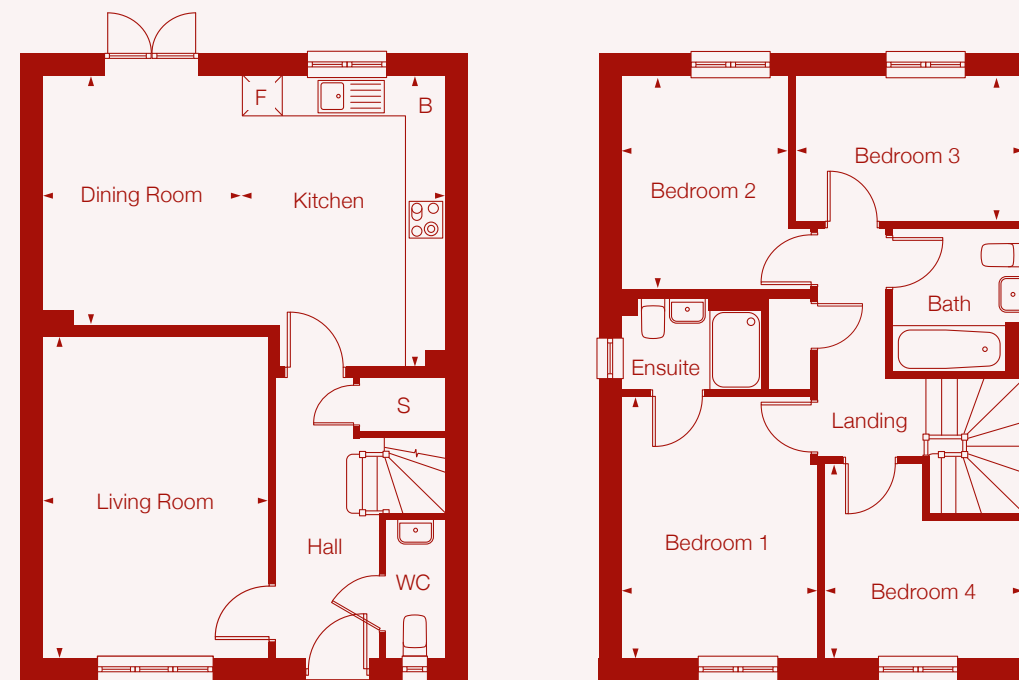
17' x 10'11"
17' x 11'
17' x 11'
9'1" x 10'1"
7'8" x 11'1"

- F Fridge Freezer
- W Washer
- B Boiler
- D Dishwasher
- S Storage

*Kitchen layouts including cupboards and appliances are subject to change.

Type 13

4 Bedroom Detached



Ground

First Floor

Plot

2009
2010
2014
2033

Room

Living Room
Kitchen*
Dining
Bedroom 1
Bedroom 2
Bedroom 3
Bedroom 4
GIA

Metric

3.39m x 4.83m
3.06m x 4.37m
2.97m x 3.75m
2.95m x 3.93m
2.51m x 3.2m
3.43m x 2.08m
3m x 2.08m
105.58m²

Imperial

11'2" x 15'10"
10'1" x 14'4"
9'9" x 12'4"
9'8" x 12'11"
8'3" x 10'6"
9'10" x 6'10"
9'10" x 6'10"

- F Fridge Freezer
- W Washer
- B Boiler
- D Dishwasher
- S Storage

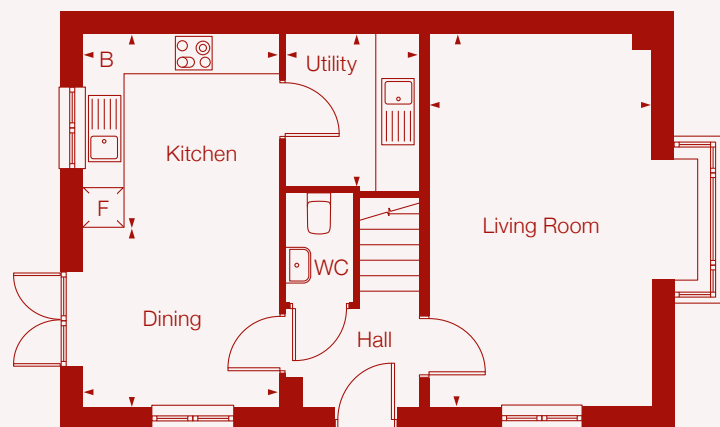
*Kitchen layouts including cupboards and appliances are subject to change.

Type 14

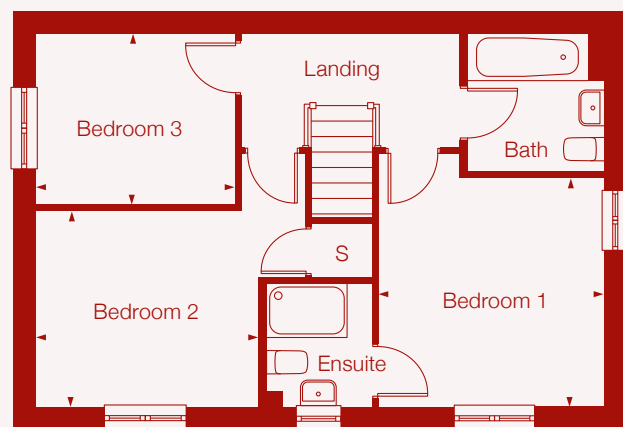
3 Bedroom
End of Terrace

Type 15

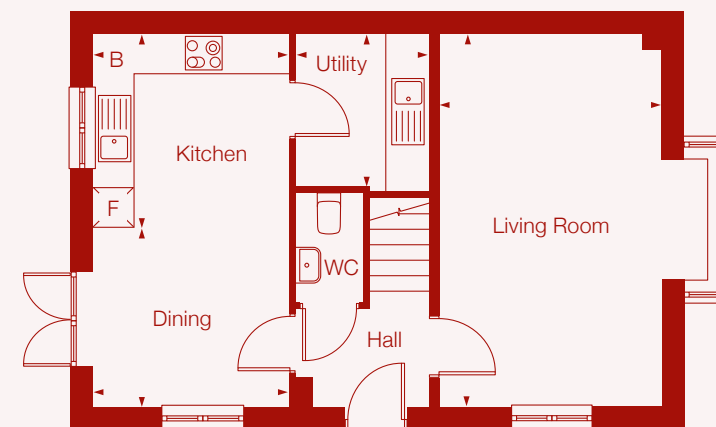
3 Bedroom
Semi-Detached



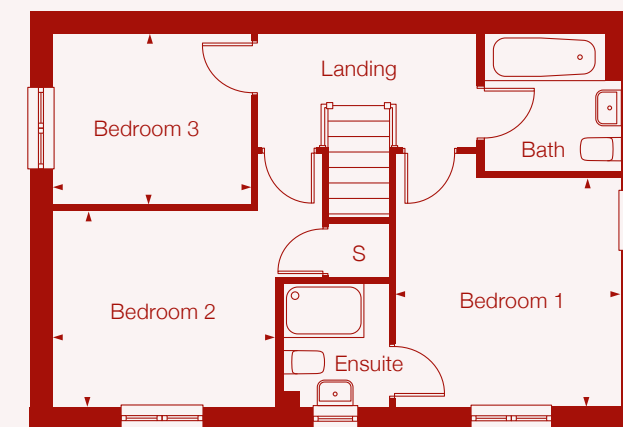
Ground Floor



First Floor



Ground Floor



First Floor

Plot
2030

Room	Metric	Imperial
Living Room	3.33m x 5.59m	10'11" x 18'4"
Kitchen*	2.93m x 2.84m	9'8" x 9'4"
Dining	2.93m x 2.74m	9'8" x 9'
Utility	2m x 2.35m	6'7" x 7'9"
Bedroom 1	3.43m x 3.39m	11'3" x 11'2"
Bedroom 2	3.33m x 2.94m	10'11" x 9'8"
Bedroom 3	2.99m x 2.56m	9'10" x 8'5"
GIA	96m ²	

- Fridge Freezer
- Washer
- Boiler
- Dishwasher
- Storage

*Kitchen layouts including cupboards and appliances are subject to change.

Plot
1948
2021

Room	Metric	Imperial
Living Room	3.33m x 5.59m	10'11" x 18'4"
Kitchen*	2.93m x 2.84m	9'8" x 9'4"
Dining	2.93m x 2.74m	9'8" x 9'
Utility	2m x 2.36m	6'7" x 7'9"
Bedroom 1	3.43m x 3.39m	11'3" x 11'2"
Bedroom 2	3.33m x 2.94m	10'11" x 9'8"
Bedroom 3	2.99m x 2.56m	9'10" x 8'5"
GIA	96m ²	

- Fridge Freezer
- Washer
- Boiler
- Dishwasher
- Storage

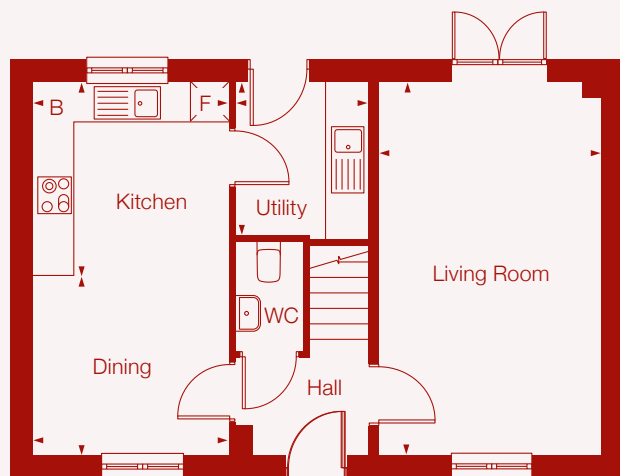
*Kitchen layouts including cupboards and appliances are subject to change.

Type 16

3 Bedroom
Semi-Detached

Type 17

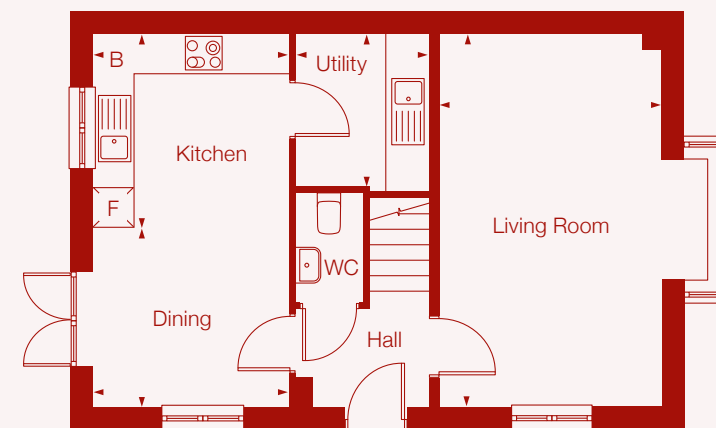
3 Bedroom
Semi-Detached



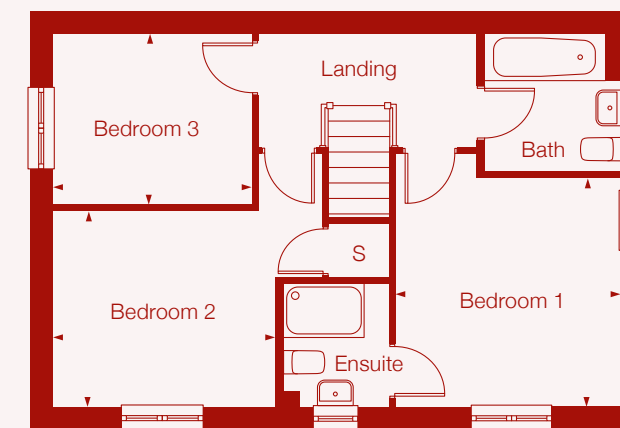
Ground Floor



First Floor



Ground Floor



First Floor

Plot	Room	Metric	Imperial
1951	Living Room	3.33m x 5.59m	10'11" x 18'4"
1957	Kitchen*	2.93m x 2.84m	9'8" x 9'4"
1962	Dining	2.93m x 2.74m	9'8" x 9'
2035	Utility	2m x 2.36m	6'7" x 7'9"
	Bedroom 1	3.43m x 3.39m	11'3" x 11'2"
	Bedroom 2	3.33m x 2.94m	10'11" x 9'8"
	Bedroom 3	2.99m x 2.56m	9'10" x 8'5"
	GIA	95m ²	

- F Fridge Freezer
- W Washer
- B Boiler
- D Dishwasher
- S Storage

*Kitchen layouts including cupboards and appliances are subject to change.

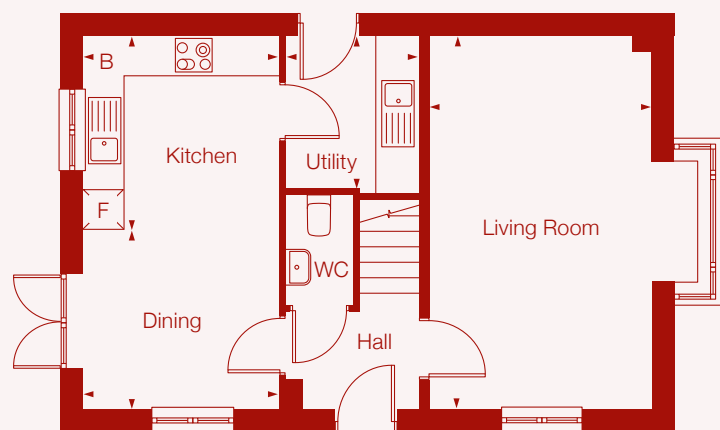
Plot	Room	Metric	Imperial
1950	Living Room	3.33m x 5.59m	10'11" x 18'4"
1955	Kitchen*	2.93m x 2.84m	9'8" x 9'4"
1956	Dining	2.93m x 2.74m	9'8" x 9'
2022	Utility	2m x 2.35m	6'7" x 7'9"
2028	Bedroom 1	3.43m x 3.39m	11'3" x 11'2"
	Bedroom 2	3.33m x 2.94m	10'11" x 9'8"
	Bedroom 3	2.99m x 2.56m	9'10" x 8'5"
	GIA	96m ²	

- F Fridge Freezer
- W Washer
- B Boiler
- D Dishwasher
- S Storage

*Kitchen layouts including cupboards and appliances are subject to change.

Type 18

3 Bedroom
Detached



Ground Floor



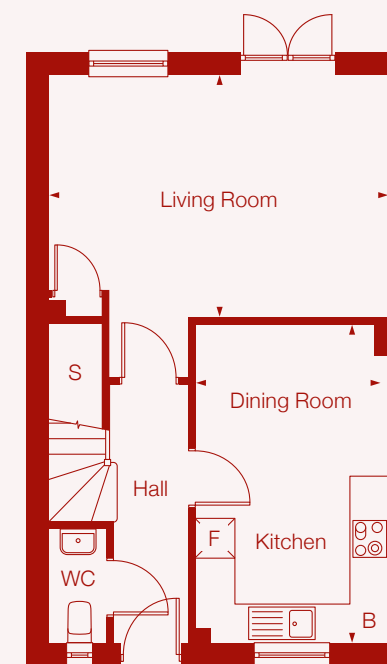
First Floor

Plot	Room	Metric	Imperial	
1963	Living Room	3.33m x 5.59m	10'11" x 18'4"	[F] Fridge Freezer
1966	Kitchen*	2.93m x 2.84m	9'8" x 9'4"	[W] Washer
1979	Dining	2.93m x 2.74m	9'8" x 9'	[B] Boiler
1982	Utility	2m x 2.35m	6'7" x 7'9"	[D] Dishwasher
2006	Bedroom 1	3.43m x 3.39m	11'3" x 11'2"	[S] Storage
2015	Bedroom 2	3.33m x 2.94m	10'11" x 9'8"	
2016	Bedroom 3	2.99m x 2.56m	9'10" x 8'5"	
	GIA	96m ²		

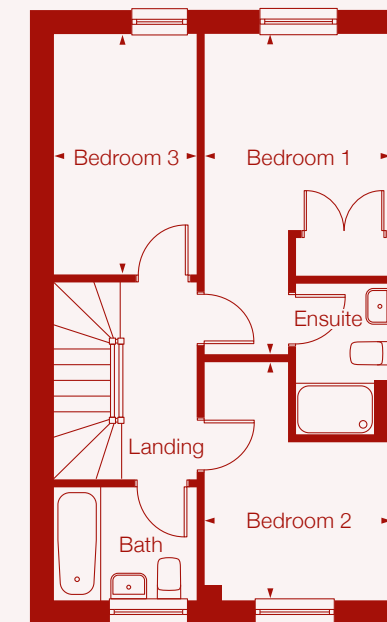
*Kitchen layouts including cupboards and appliances are subject to change.

Type 19

3 Bedroom
Semi-Detached



Ground Floor



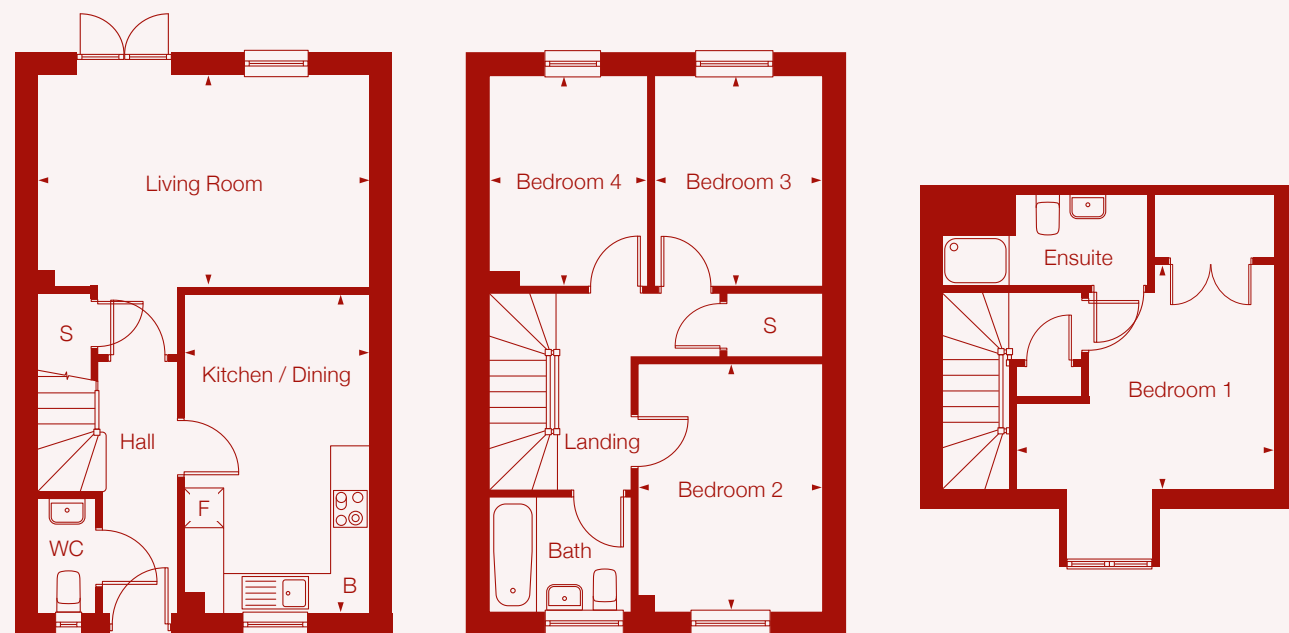
First Floor

Plot	Room	Metric	Imperial	
1980	Living Room	5.09m x 3.63m	16'9" x 11'11"	[F] Fridge Freezer
1981	Kitchen*	2.91m x 2.49m	9'7" x 8'2"	[W] Washer
1984	Dining	2.91m x 2.26m	9'7" x 7'5"	[B] Boiler
1985	Bedroom 1	2.85m x 3.66m	9'4" x 12'	[D] Dishwasher
2017	Bedroom 2	2.85m x 2.37m	9'4" x 7'9"	[S] Storage
2018	Bedroom 3	2.15m x 3.64m	7'1" x 12'	
	GIA	86.77m ²		

*Kitchen layouts including cupboards and appliances are subject to change.

Type 20

4 Bedroom
Semi-Detached



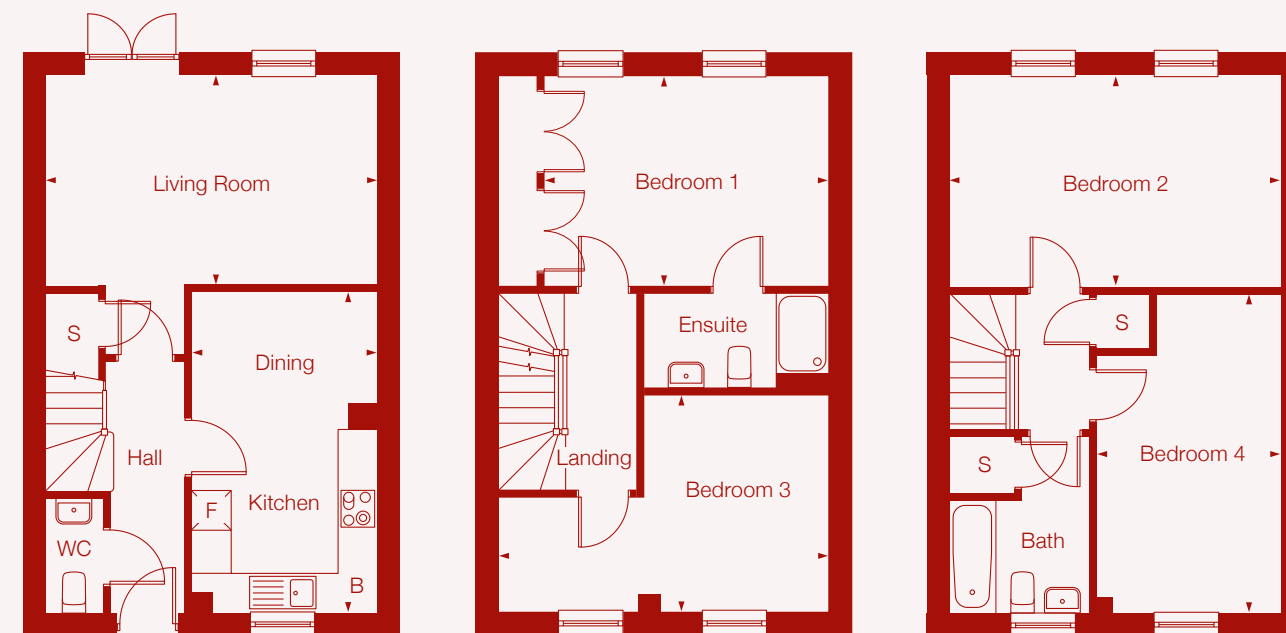
Ground

First Floor

Second Floor

Type 21

4 Bedroom
Semi-Detached



Ground

First Floor

Second Floor

Plot	Room	Metric	Imperial
1964	Living Room	4.98m x 3.2m	16'4" x 10'6"
1965	Kitchen* / Dining	2.8m x 4.76m	9'2" x 15'8"
2007	Bedroom 1	3.88m x 4.29m	12'9" x 14'1"
	Bedroom 2	2.77m x 3.74m	9'1" x 12'3"
	Bedroom 3	2.52m x 3.19m	7'10" x 10'6"
	Bedroom 4	2.12m x 1.73m	7' x 5'8"
	GIA	103m ²	

- F Fridge Freezer
- W Washer
- B Boiler
- D Dishwasher
- S Storage

*Kitchen layouts including cupboards and appliances are subject to change.

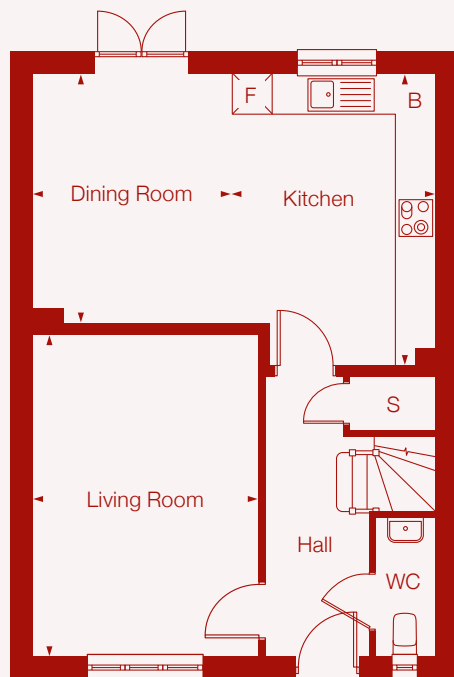
Plot	Room	Metric	Imperial
1942	Living Room	4.98m x 3.16m	16'4" x 10'4"
1945	Kitchen*	2.8m x 2.74m	9'2" x 9'
	Dining	2.8m x 2.07m	9'2" x 6'10"
	Bedroom 1	4.98m x 3.19m	16'4" x 10'6"
	Bedroom 2	4.98m x 3.19m	16'4" x 10'6"
	Bedroom 3	4.98m x 3.26m	16'4" x 10'9"
	Bedroom 4	2.78m x 4.78m	9'2" x 15'8"
	GIA	120.57m ²	

- F Fridge Freezer
- W Washer
- B Boiler
- D Dishwasher
- S Storage

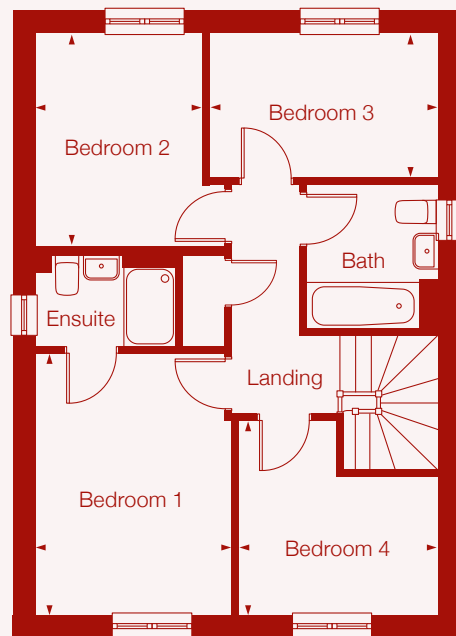
*Kitchen layouts including cupboards and appliances are subject to change.

Type 22

4 Bedroom Detached



Ground



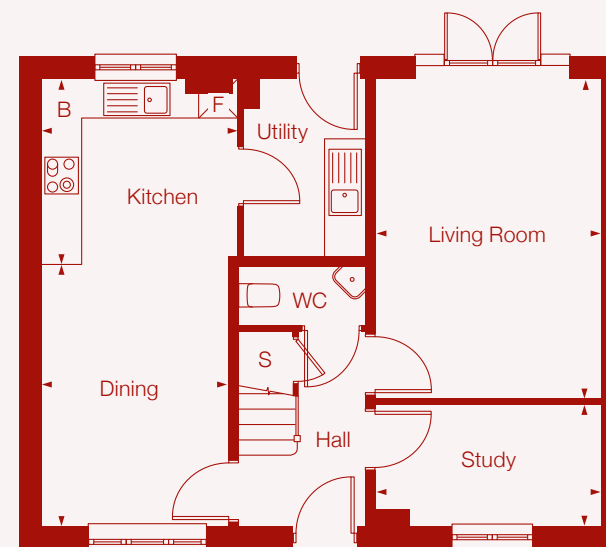
First Floor

Plot	Room	Metric	Imperial	Appliance
1973	Living Room	3.39m x 4.83m	11'2" x 15'10"	
1974	Kitchen*	3.06m x 4.37m	10'1" x 14'4"	[F] Fridge Freezer
1975	Dining	2.97m x 3.75m	9'9" x 12'4"	[W] Washer
1977	Bedroom 1	2.95m x 3.93m	9'8" x 12'11"	[B] Boiler
1978	Bedroom 2	2.51m x 3.2m	8'3" x 10'6"	[D] Dishwasher
2019	Bedroom 3	3.43m x 2.08m	9'10" x 6'10"	[S] Storage
	Bedroom 4	3m x 2.08m	9'10" x 6'10"	
	GIA	105.58m ²		

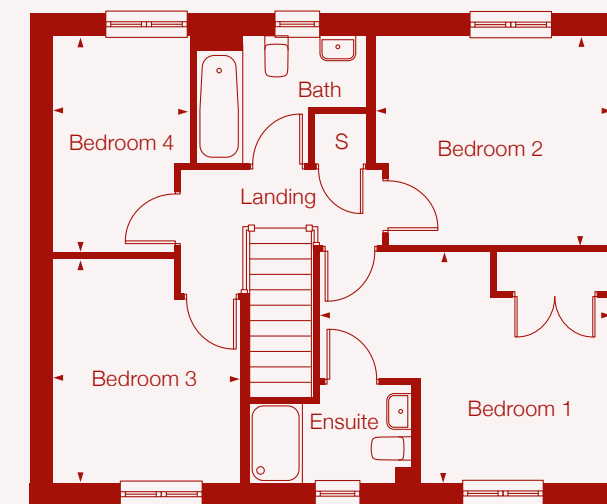
*Kitchen layouts including cupboards and appliances are subject to change.

Type 23

4 Bedroom Detached



Ground Floor



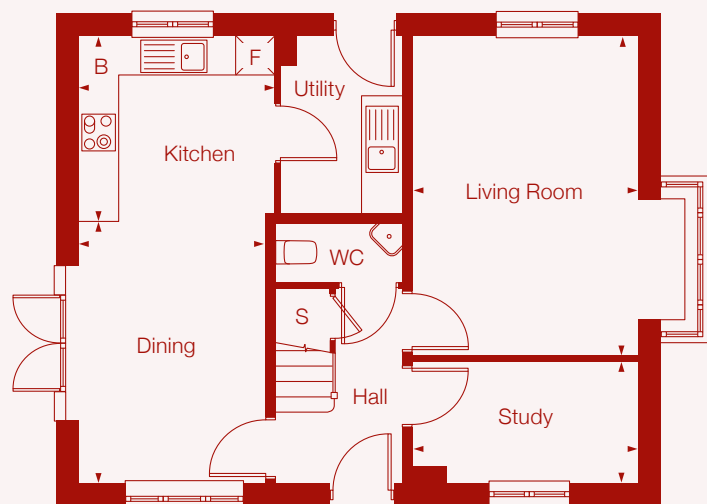
First Floor

Plot	Room	Metric	Imperial	Appliance
1949	Living Room	3.39m x 4.8m	11'2" x 15'9"	
2034	Kitchen*	2.95m x 2.78m	9'8" x 9'1"	[F] Fridge Freezer
	Dining	2.8m x 3.94m	9'3" x 12'11"	[W] Washer
	Study	3.39m x 1.81m	11'2" x 6'	[B] Boiler
	Utility	1.78m x 2.67m	5'10" x 8'9"	[D] Dishwasher
	Bedroom 1	4.39m x 3.47m	14'5" x 11'5"	[S] Storage
	Bedroom 2	3.55m x 3.15m	11'8" x 10'4"	
	Bedroom 3	2.87m x 3.37m	9'5" x 11'1"	
	Bedroom 4	2.07m x 3.25m	6'10" x 10'8"	
	GIA	112.83m ²		

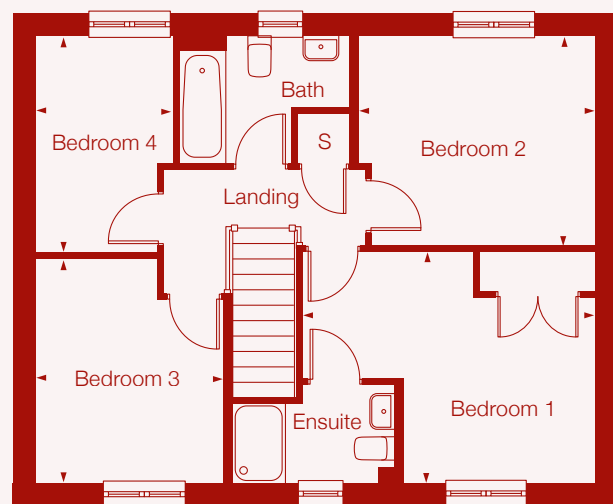
*Kitchen layouts including cupboards and appliances are subject to change.

Type 24

4 Bedroom Detached



Ground Floor



First Floor

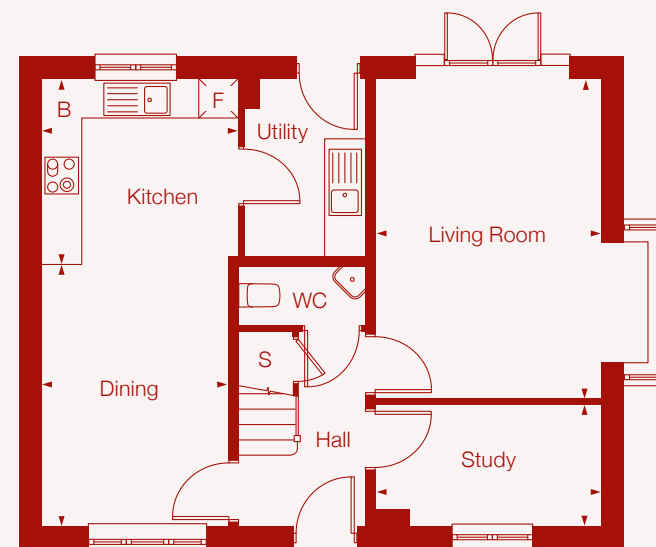
Plot	Room	Metric	Imperial
1983	Living Room	3.39m x 4.8m	11'2" x 15'9"
1989	Kitchen*	2.95m x 2.78m	9'8" x 9'1"
	Dining	2.8m x 3.94m	9'3" x 12'11"
	Study	3.39m x 1.81m	11'2" x 6'
	Utility	1.78m x 2.67m	5'10" x 8'9"
	Bedroom 1	4.39m x 3.47m	14'5" x 11'5"
	Bedroom 2	3.55m x 3.15m	11'8" x 10'4"
	Bedroom 3	2.87m x 3.37m	9'5" x 11'1"
	Bedroom 4	2.07m x 3.25m	6'10" x 10'8"
	GIA	112.83m ²	

- F Fridge Freezer
- W Washer
- B Boiler
- D Dishwasher
- S Storage

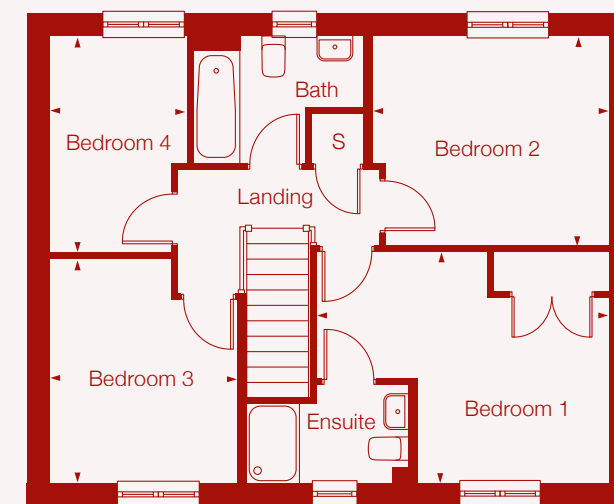
*Kitchen layouts including cupboards and appliances are subject to change.

Type 25

4 Bedroom Detached



Ground Floor



First Floor

Plot	Room	Metric	Imperial
1972	Living Room	3.39m x 4.8m	11'2" x 15'9"
2011	Kitchen*	2.95m x 2.78m	9'8" x 9'1"
	Dining	2.8m x 3.94m	9'3" x 12'11"
	Study	3.39m x 1.81m	11'2" x 6'
	Utility	1.78m x 2.67m	5'10" x 8'9"
	Bedroom 1	4.39m x 3.47m	14'5" x 11'5"
	Bedroom 2	3.55m x 3.15m	11'8" x 10'4"
	Bedroom 3	2.87m x 3.37m	9'5" x 11'1"
	Bedroom 4	2.07m x 3.25m	6'10" x 10'8"
	GIA	112.83m ²	

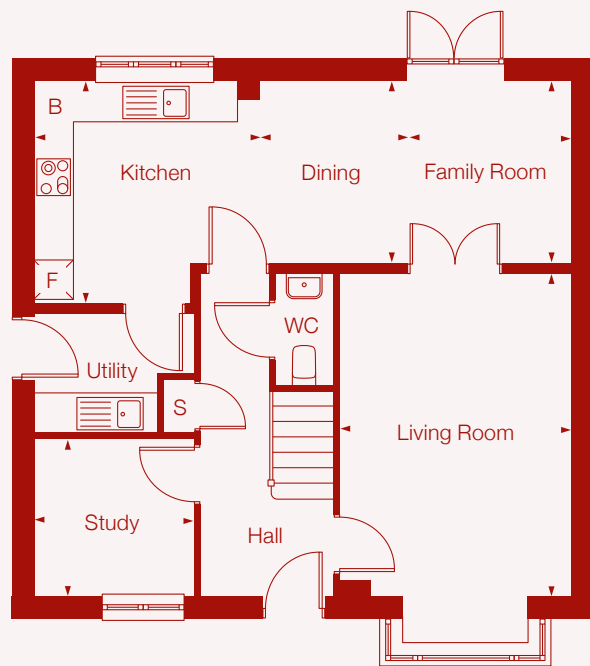
- F Fridge Freezer
- W Washer
- B Boiler
- D Dishwasher
- S Storage

*Kitchen layouts including cupboards and appliances are subject to change.

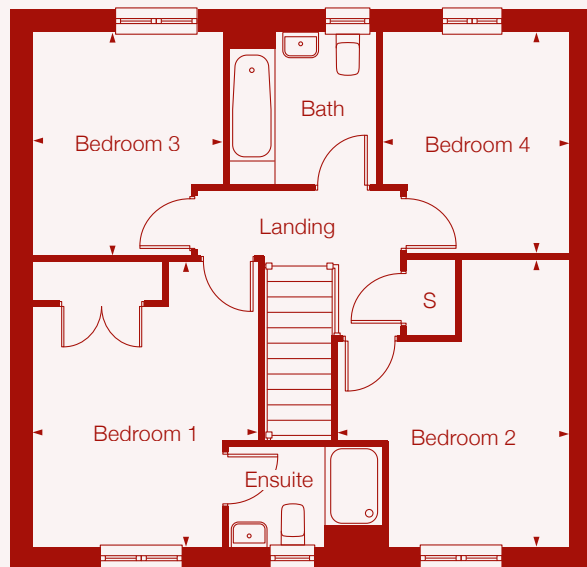


Type 26

4 Bedroom Detached



Ground Floor



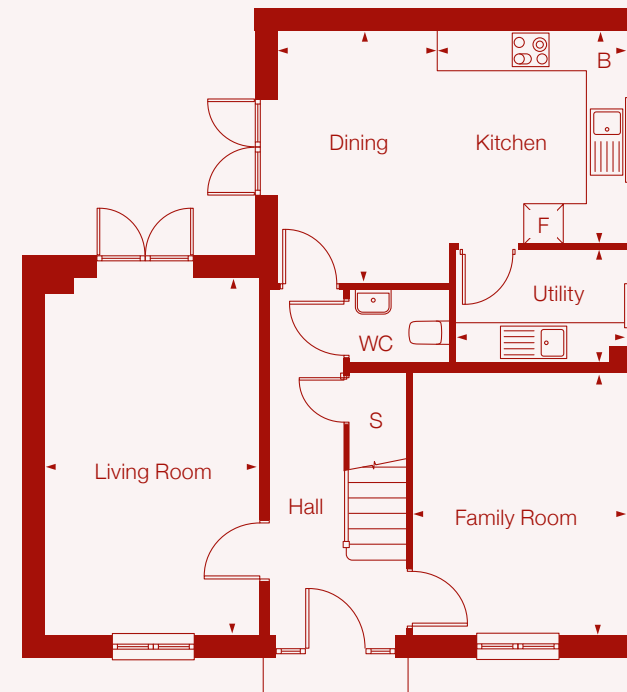
First Floor

Plot	Room	Metric	Imperial
1988	Living Room	3.48m x 4.83m	11'5" x 15'10"
2020	Kitchen*	3.04m x 3.34m	10' x 11'
	Dining	2.5m x 2.74m	8'3" x 9'
	Family Room	2.5m x 2.74m	8'3" x 9'10"
	Utility	2.4m x 1.78m	7'11" x 5'10"
	Study	2.4m x 2.35m	7'11" x 7'9"
	Bedroom 1	3.38m x 4.28m	11'1" x 14'1"
	Bedroom 2	2.73m x 4.31m	9' x 14'2"
	Bedroom 3	2.86m x 3.35m	9'5" x 11'
	Bedroom 4	2.81m x 3.32m	9'3" x 10'11"
	GIA	125.93m ²	

*Kitchen layouts including cupboards and appliances are subject to change.

Type 27

4 Bedroom Detached



Ground Floor



First Floor

Plot	Room	Metric	Imperial
1986	Living Room	3.22m x 5.36m	10'17" x 17'7"
	Kitchen*	2.8m x 3.2m	9'2" x 10'6"
	Family Room	3.21m x 3.93m	10'7" x 12'11"
	Dining	2.45m x 3.79m	8'1" x 12'5"
	Utility	2.57m x 1.7m	8'5" x 5'7"
	Bedroom 1	3.2m x 2.98m	10'6" x 9'10"
	Bedroom 2	3.21m x 3.58m	10'7" x 11'9"
	Bedroom 3	3m x 3.17m	9'11" x 10'5"
	Bedroom 4	2.15m x 3.52m	7'1" x 11'7"
	GIA	132.78m ²	

*Kitchen layouts including cupboards and appliances are subject to change.



With SO Resi, you buy your own home in your own way. You start with a share that's right for you, then you can buy extra shares over time, so it's all manageable and suits your income.

You start by buying between 25% and 75% of your SO Resi home. That means your monthly mortgage payments and deposit are smaller than they would be if you bought your home outright. There are two other monthly payments for your SO Resi home. One is the SO Resi payment for the share of your home that Metropolitan Thames Valley owns. The other is the service charge, which pays to look after the building you live in. There are also the usual other costs, like household utility bills. You can choose to buy a bigger share of your SO Resi home in the future, and even own 100%. The bigger the share you own, the lower your SO Resi payment will be.

You can sell your share at any time if you decide to move on.

We're here to help

Whatever your needs, we're on hand to help at every stage. First we'll help you understand all the costs and work out what's affordable for you. If you decide to go ahead, we'll be there to answer your questions. And in the future, we can help you with buying a bigger share of your home, or with selling up if it's time for a change.

Tel: 0208 607 0550

Email sales@soresi.co.uk

or visit sharedownership.co.uk

MTVH has taken all reasonable care in the preparation of the information given in this brochure. However, this information is subject to change and has been prepared solely for the purpose of providing general guidance. MTVH does not warrant the accuracy or completeness of this information. Particulars are given for illustrative purposes only. MTVH undertakes continuous product development and any information given relating to our products may vary from time to time. The information and particulars set out within this brochure do not constitute part of a formal offer invitation or contract to acquire the relevant property. For the reasons mentioned above, no information contained in this brochure is to be relied upon. In particular, all plans prospectus, descriptions, dimensions and measurements are approximate and provided for guidance only. Such information is given without responsibility on the part of MTVH.

March 2026