

Welcome to Ladden Garden Village

North Yate, South Gloucestershire, BS37 7EJ

A collection of 1 bedroom Shared
Ownership apartments.

bromfordhomes.co.uk/laddengardenvillage

On your doorstep

Built by 5* developers David Wilson Homes and coming soon to the town of Yate, our new 1-bedroom apartments at Ladden Garden Village are designed to meet the needs of modern living and will appeal to first-time buyers, couples and people looking to downsize.



**Nearest
Supermarket**
2.1 miles



**Yate Railway
Station**
2.2 miles



**Yate Active
Lifestyle Centre**
1.8 miles

Local area connection

To meet the needs of local people most of our homes for sale require a local connection to the area. The connection criteria varies between sites, but generally it's based on:

- Being a resident (or employed) within the area for a number of years (usually between 2 to 5)
- Family connections – for example, parent, grandparent, child, grandchild or adult sibling – who have lived in the area for at least three years

Priority will be given to applicants who have a connection to South Gloucestershire Council.

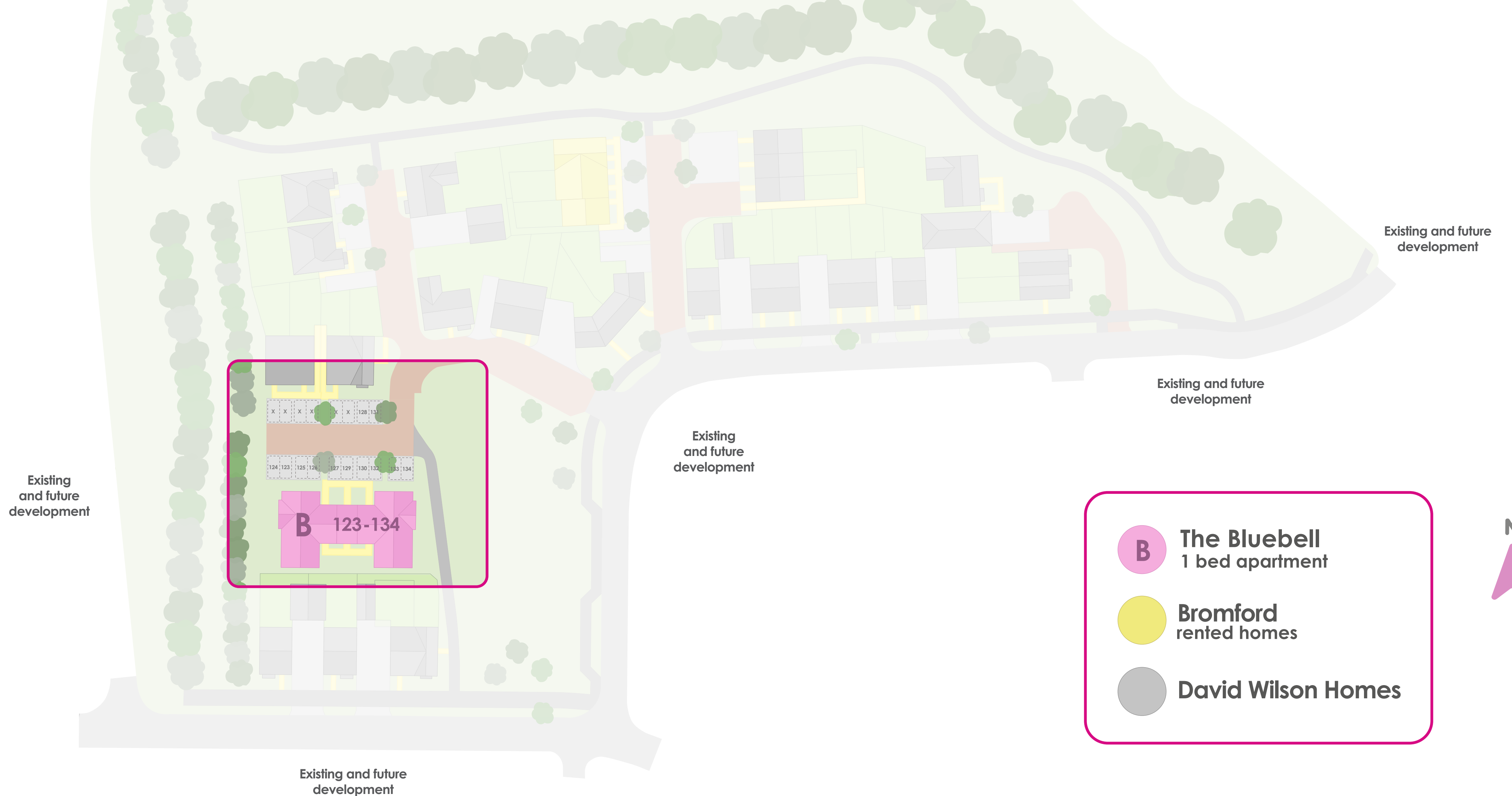
If you need any more information, please speak to one of our helpful Sales Consultants.

We follow Homes England Guidelines on First Come, First Served policies for Shared Ownership homes. Please visit [our policies page](#) for full policy details

Bromford.
Shared Ownership

Ladden Garden Village

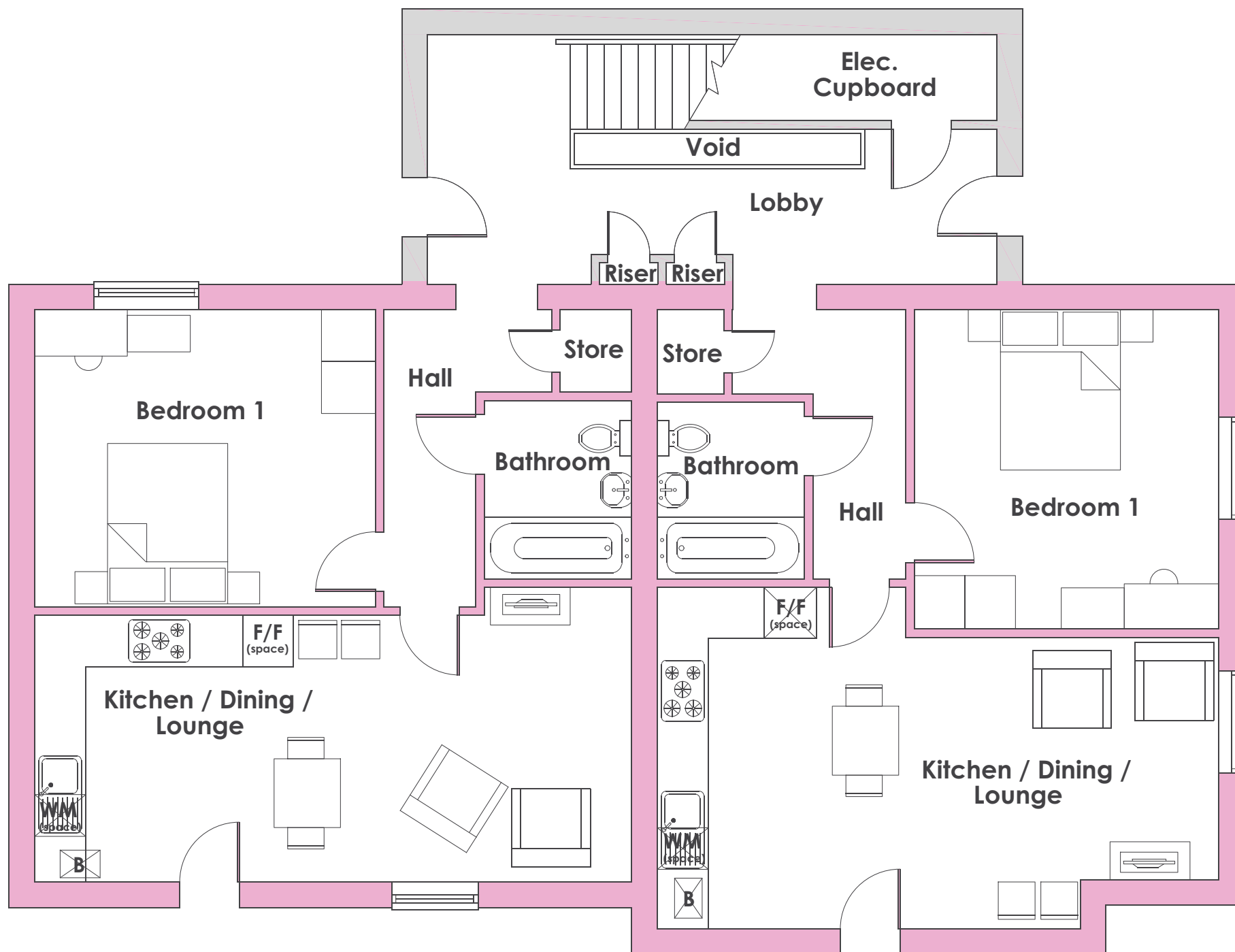
Off Leechpool Way, North Yate, South Gloucestershire, BS37 7EJ



Plots: 123, 124, 129 & 130

The Bluebell

1 bedroom ground floor apartment



Plot 123 & 129

Bedroom

4.0m x 3.49m / 13'2" x 11'5"

Kitchen/Dining/Lounge

7.01m x 3.46m / 23'0" x 11'4"

Plot 124 & 130

Bedroom

3.75m x 3.57m / 12'4" x 11'9"

Kitchen/Dining/Lounge

6.58m x 4.01m / 21'7" x 13'2"



1 bedroom



Energy efficient



10 Year NHBC warranty

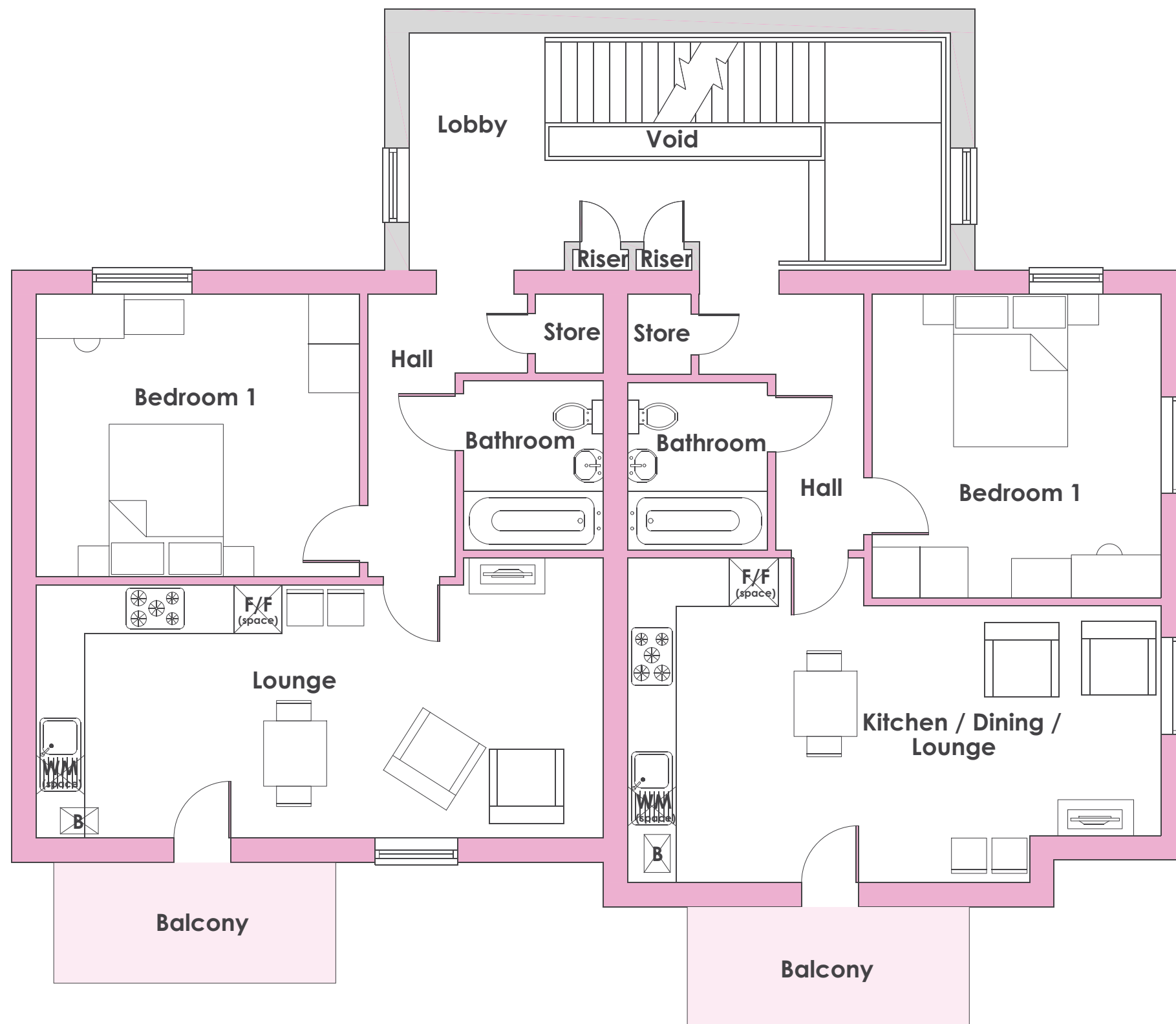


- Energy-efficient apartment
- Open-plan living
- Fitted kitchen with integrated oven, hob and extractor hood
- Modern bathroom
- Useful storage
- Allocated parking

Plots: 125,126, 131 & 132

The Bluebell

1 bedroom first floor apartment



Plot 125 & 131

Bedroom

3.99m x 3.49m / 13'1" x 11'5"

Kitchen/Dining/Lounge

7.01m x 3.46m / 23'0" x 11'4"

Plot 126 & 132

Bedroom

3.75m x 3.57m / 12'4" x 11'9"

Kitchen/Dining/Lounge

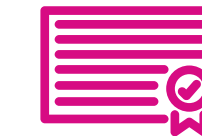
6.58m x 4.01m / 21'7" x 13'2"



1 bedroom



Energy efficient



10 Year NHBC warranty



- Energy-efficient apartment
- Open-plan living
- Fitted kitchen with integrated oven, hob and extractor hood
- Modern bathroom
- Useful storage
- Allocated parking

Plots: 127, 128, 133 & 134

The Bluebell

1 bedroom second floor apartment



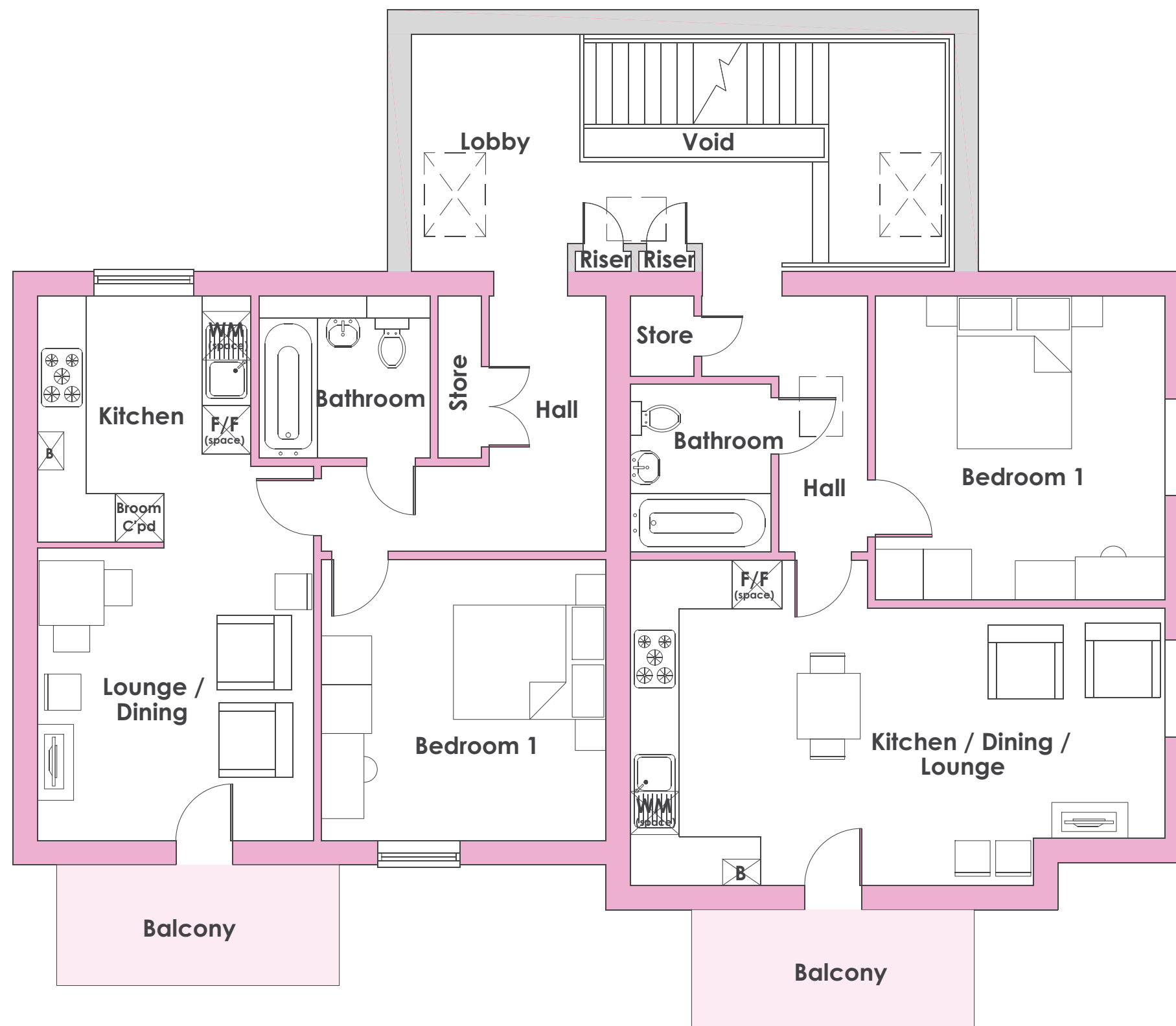
1 bedroom



Energy efficient



10 Year NHBC warranty



Plot 127 & 133

Kitchen

3.04m x 2.66m / 10'0" x 8'9"

Dining/Lounge

3.59m x 3.42m / 11'9" x 11'3"

Bedroom

3.51m x 3.50m / 11'6" x 11'6"

Plot 128 & 134

Bedroom

3.75m x 3.57m / 12'4" x 11'9"

Kitchen/Dining/Lounge

6.58m x 4.01m / 21'7" x 13'2"



- Energy-efficient apartment
- Open-plan living
- Fitted kitchen with integrated oven, hob and extractor hood
- Modern bathroom
- Useful storage
- Allocated parking



Who are we?

Since 1963 we have been providing customers with new and affordable homes. We want all of our customers to thrive and believe that with the right homes and someone who believes in their potential, almost anything is possible - with Bromford Shared Ownership we're helping more people than ever before to realise their dreams of owning their home.

Where does my money go when I buy a Bromford home? As a registered charity through the FCA registered societies, all the money Bromford makes goes back into the communities we work in and helps the people we work with thrive for a better safer life.



Shannon Way,
Ashchurch,
Tewkesbury,
GL20 8ND

0800 0852 499
sales@bromford.co.uk
bromfordhomes.co.uk



Follow us on TikTok

Visit the Home Ownership Hub to find out more about your new home
bromfordhomes.co.uk/home-ownership-hub



Bromford abides by the Consumer Protection from Unfair Trading Regulations 2008

Bromford.
Shared Ownership