



# Glynswood Gardens

GLYSWOOD, HIGH WYCOMBE, BUCKS, HP13 5QL

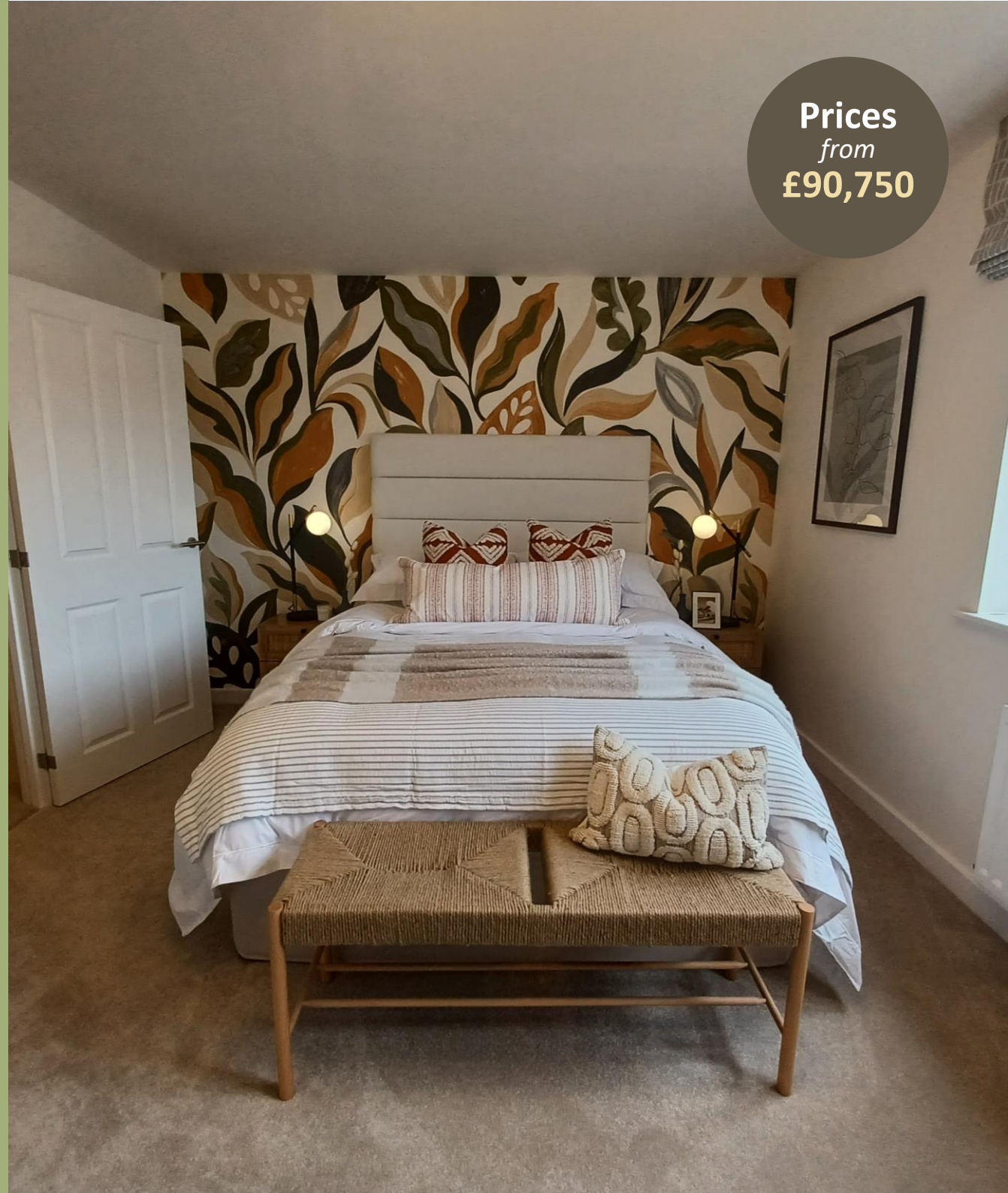
A brand-new development of 1, 2, 3 & 4 bed homes

available through Shared Ownership

Trading as

**settle.**Paradigm

Prices  
from  
**£90,750**







£ Prices from £90,750

% Share available  
25%-75% (3 & 4 beds)  
30%-75% (1 & 2 beds)

🏠 1 & 2 bed duplexes  
2, 3 & 4 bed houses



## KEY FEATURES

White bathroom suite and  
thermostatic shower

Carpet throughout individual  
living areas & bedrooms

Vinyl flooring in kitchen/ dining,  
bathroom & downstairs toilet

Gas central heating

2 allocated parking spaces for  
the houses & 1 for the duplexes

Fitted kitchen with integrated  
oven and hob, washer dryer &  
fridge freezer


Integrated dishwasher to 3 & 4  
bed houses


Enclosed garden with turf  
(houses only)

These particulars do not constitute any part of an offer or contract. Any intended purchasers must satisfy themselves as to the correctness of each of the statements contained in these particulars. All floor layouts may be subject to changes. The dimensions given on the plan are subject to minor variations intended for guidance only and are not used for carpets, appliances or items of furniture.

### **New Shared Ownership Homes in Hughenden, High Wycombe – Available Now!**

SettleParadigm is delighted to present **22 brand-new homes** available to purchase through the **Shared Ownership Scheme**. These thoughtfully designed properties include:

 1 & 2-bedroom duplexes

 2, 3 & 4-bedroom houses

Located in the charming area of **Hughenden, High Wycombe**, these homes offer:

- ✓ Walking distance to **Hughenden Park** and **High Wycombe Town Centre**
- ✓ Excellent **transport connections**
- ✓ A wide range of **local amenities**

Whether you're a first-time buyer or looking to upsize, this is a fantastic opportunity to own a beautiful new home in a sought-after location.



Disclaimer: Please note that, due to varying stages of construction, photographs may be of similar properties and are intended to give an idea of the finish of the properties being built.







## One Bed Duplex Plot 39 (\* handed)

KITCHEN / DINING / LIVING ROOM  
21'9" x 15'3"    6.65m x 4.66m

BEDROOM ONE  
15'2" x 11'3"    4.64m x 3.45m

These particulars do not constitute any part of an offer or contract. Any intended purchasers must satisfy themselves as to the correctness of each of the statements contained in these particulars. All floor layouts may be subject to changes. The dimensions given on the plan are subject to minor variations intended for guidance only and are not to be used for carpets, appliances or items of furniture.



FIRST FLOOR



GROUND FLOOR





## Two Bed Duplex Plot 40 (\* handed)

KITCHEN / DINING / LIVING  
20'1" x 13'1"    6.14m x 4.00m

BEDROOM ONE  
12'8" x 9'11"    3.88m x 3.03m

BEDROOM TWO  
12'8" x 9'2"    3.88m x 2.81m



FIRST FLOOR

- bin store to be shared with Plot 39



GROUND FLOOR

These particulars do not constitute any part of an offer or contract. Any intended purchasers must satisfy themselves as to the correctness of each of the statements contained in these particulars. All floor layouts may be subject to changes. The dimensions given on the plan are subject to minor variations intended for guidance only and are not to be used for carpets, appliances or items of furniture.





## One Bed Duplex Plot 41 (\* handed)

KITCHEN / DINING / LIVING ROOM  
21'2" x 15'2"      6.47m x 4.64m

BEDROOM ONE  
11'6" x 15'2"      3.52m x 4.64m



GROUND FLOOR



FIRST FLOOR

These particulars do not constitute any part of an offer or contract. Any intended purchasers must satisfy themselves as to the correctness of each of the statements contained in these particulars. All floor layouts may be subject to changes. The dimensions given on the plan are subject to minor variations intended for guidance only and are not to be used for carpets, appliances or items of furniture.





## Two Bed Duplex Plot 42 (\* handed)

KITCHEN / DINING / LIVING  
20'1" x 13'1"    6.14m x 4.00m

BEDROOM ONE  
12'8" x 9'11"    3.88m x 3.03m

BEDROOM TWO  
12'8" x 9'2"    3.88m x 2.81m



GROUND FLOOR



FIRST FLOOR

- bin store to be shared with Plot 41

These particulars do not constitute any part of an offer or contract. Any intended purchasers must satisfy themselves as to the correctness of each of the statements contained in these particulars. All floor layouts may be subject to changes. The dimensions given on the plan are subject to minor variations intended for guidance only and are not used for carpets, appliances or items of furniture.





## Two Bedroom House Plots 6, 44\*, 45, 46\* (\* handed)

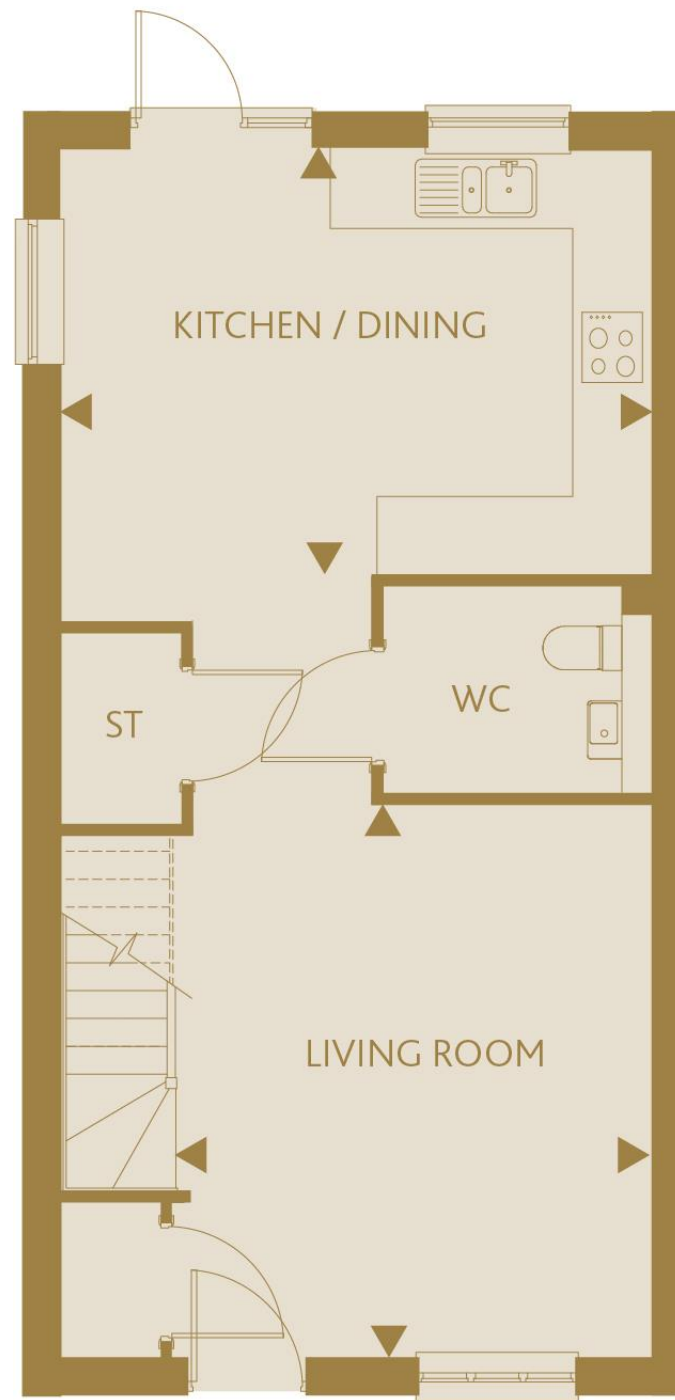
KITCHEN/DINING  
11'6" x 16'0"    3.53m x 4.89m

LIVING ROOM  
15'0" x 13'0"    4.59m x 3.98m

BEDROOM 1  
12'10" x 16'0"    3.92m x 4.89m

BEDROOM 2  
10'9" x 16'0"    3.30m x 4.89m

These particulars do not constitute any part of an offer or contract. Any intended purchasers must satisfy themselves as to the correctness of each of the statements contained in these particulars. All floor layouts maybe subject to changes. The dimensions given on the plan are subject to minor variations intended for guidance only and are not be used for carpets, appliances or items of furniture.



GROUND FLOOR



FIRST FLOOR







## Three Bed House Plots 17, 21 (\* handed)

KITCHEN/DINING  
16'2" x 11'1" 4.94m x 3.38m

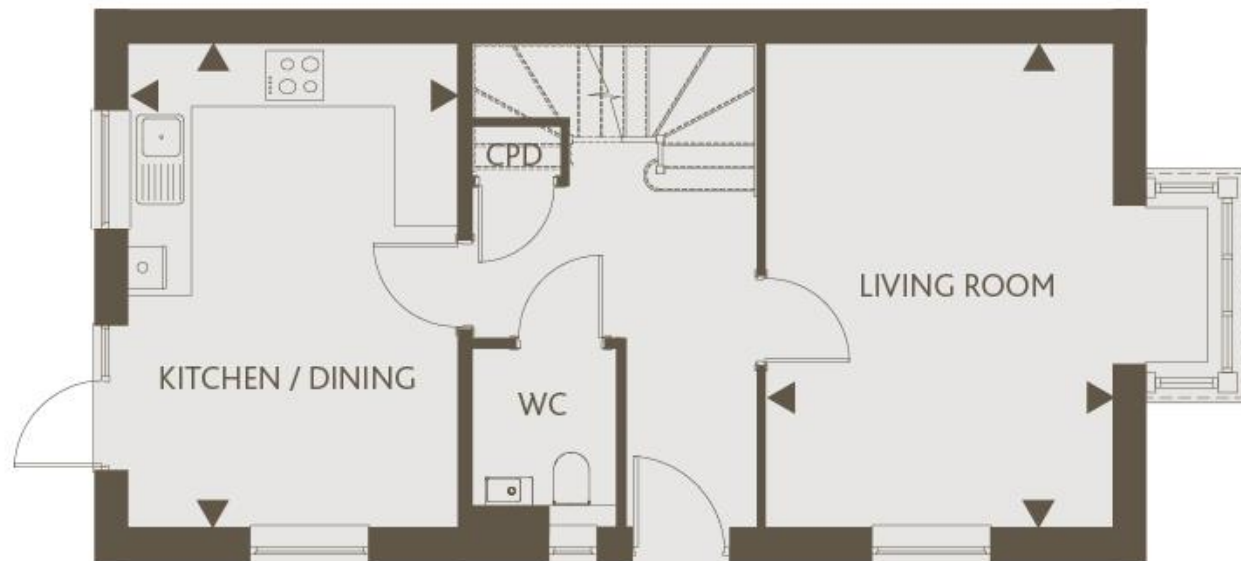
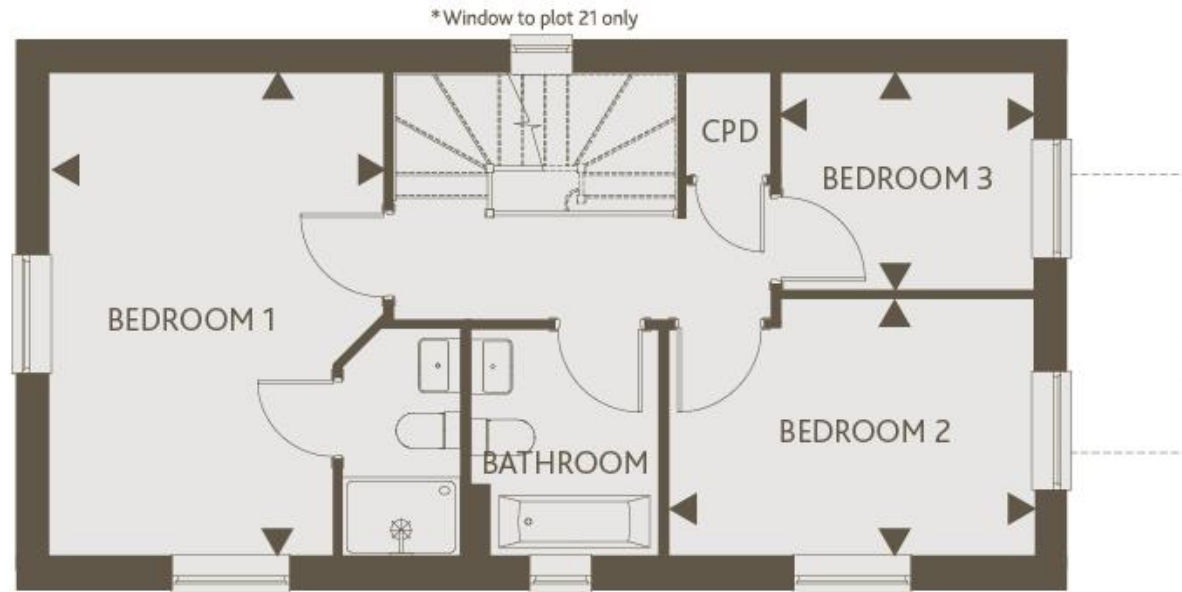
LIVING ROOM  
16'2" x 11'7" 4.94m x 3.55m

BEDROOM 1  
16'2" x 11'3" 4.94m x 3.43m

BEDROOM 2  
8'7" x 12'2" 2.64m x 3.71m

BEDROOM 3  
10'7" x 8'6" 2.23m x 2.61m

These particulars do not constitute any part of an offer or contract. Any intended purchasers must satisfy themselves as to the correctness of each of the statements contained in these particulars. All floor layouts may be subject to changes. The dimensions given on the plan are subject to minor variations intended for guidance only and are not to be used for carpets, appliances or items of furniture.





# Three Bed House

## Plot 24

(\* handed)

KITCHEN / DINING  
11'1" x 16'2"    3.38m x 4.94m

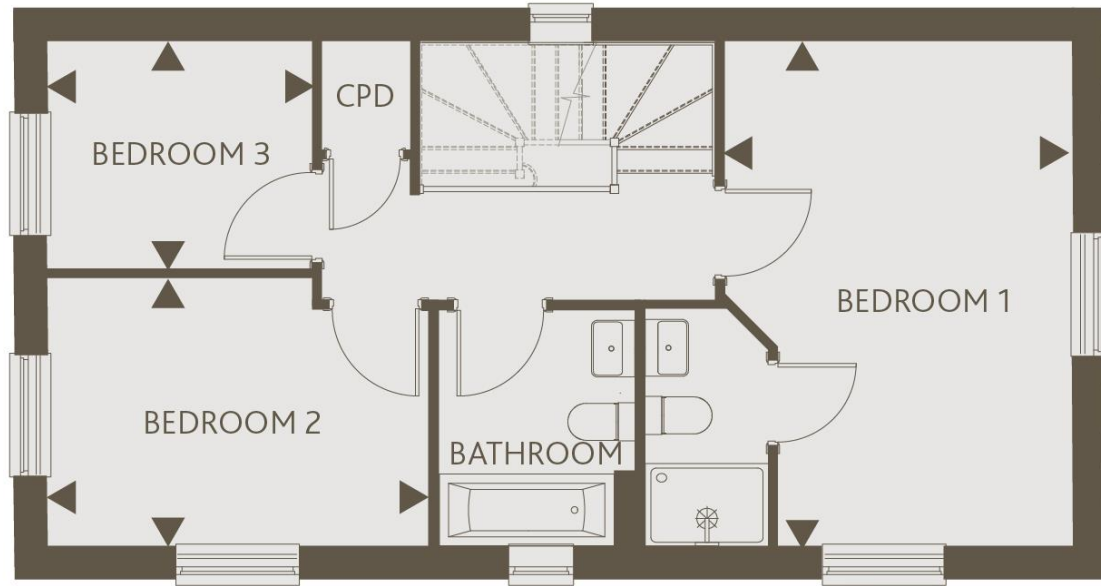
LIVING ROOM  
11'7" x 16'2"    3.55m x 4.94m

BEDROOM 1  
11'3" x 16'2"    3.43m x 4.94m

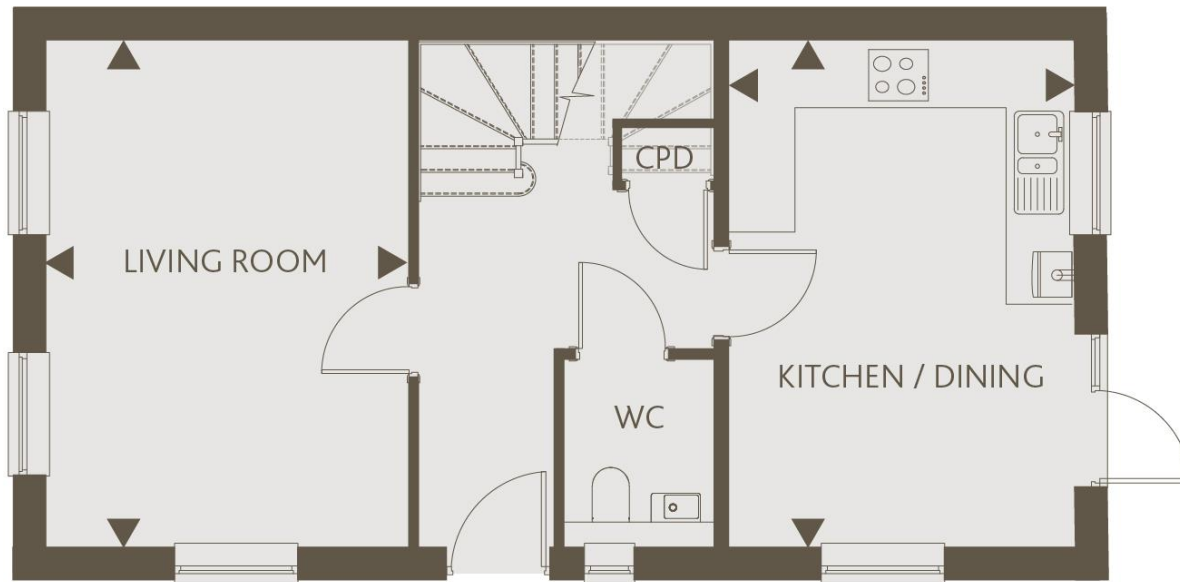
BEDROOM 2  
8'7" x 12'2"    2.64m x 3.73m

BEDROOM 3  
8'6" x 7'3"    2.61m x 2.23m

These particulars do not constitute any part of an offer or contract. Any intended purchasers must satisfy themselves as to the correctness of each of the statements contained in these particulars. All floor layouts maybe subject to changes. The dimensions given on the plan are subject to minor variations intended for guidance only and are not be used for carpets, appliances or items of furniture.



FIRST FLOOR



GROUND FLOOR





## Three Bed House Plot 5 & 18\*

(\* handed)

KITCHEN / DINING  
12'6" x 13'5"    3.81m x 4.09m

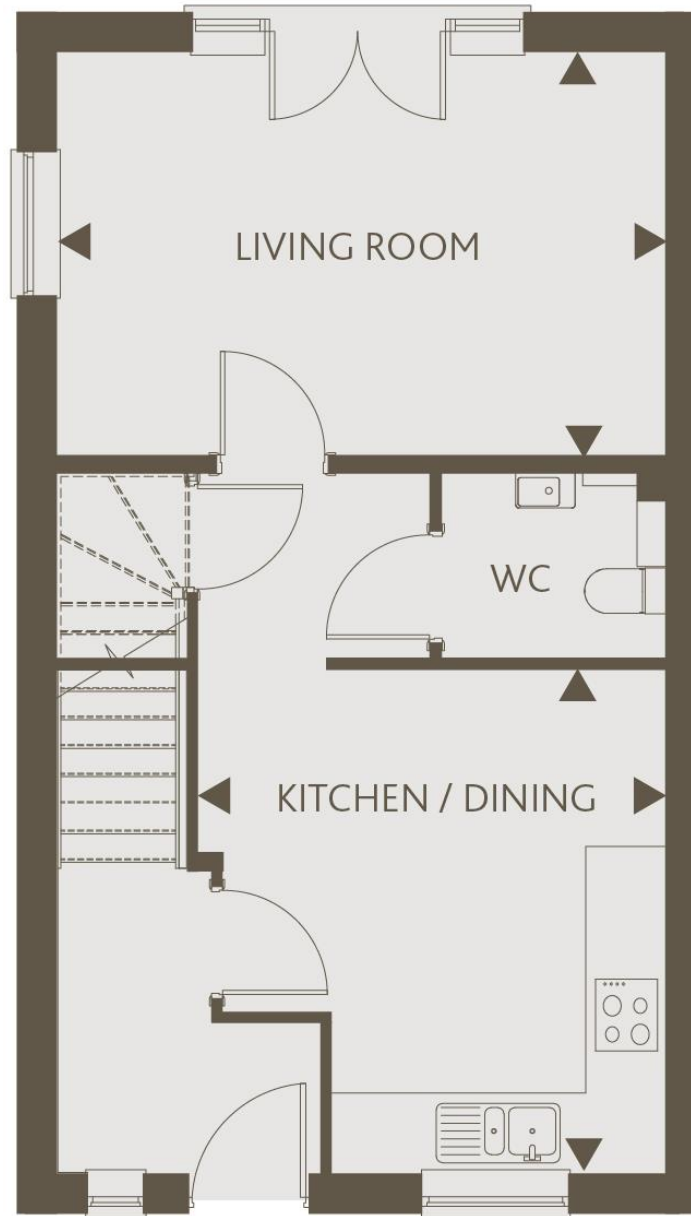
LIVING ROOM  
16'2" x 10'9"    4.95m x 3.30m

BEDROOM 1  
9'1" x 14'6"    2.78m x 4.42m

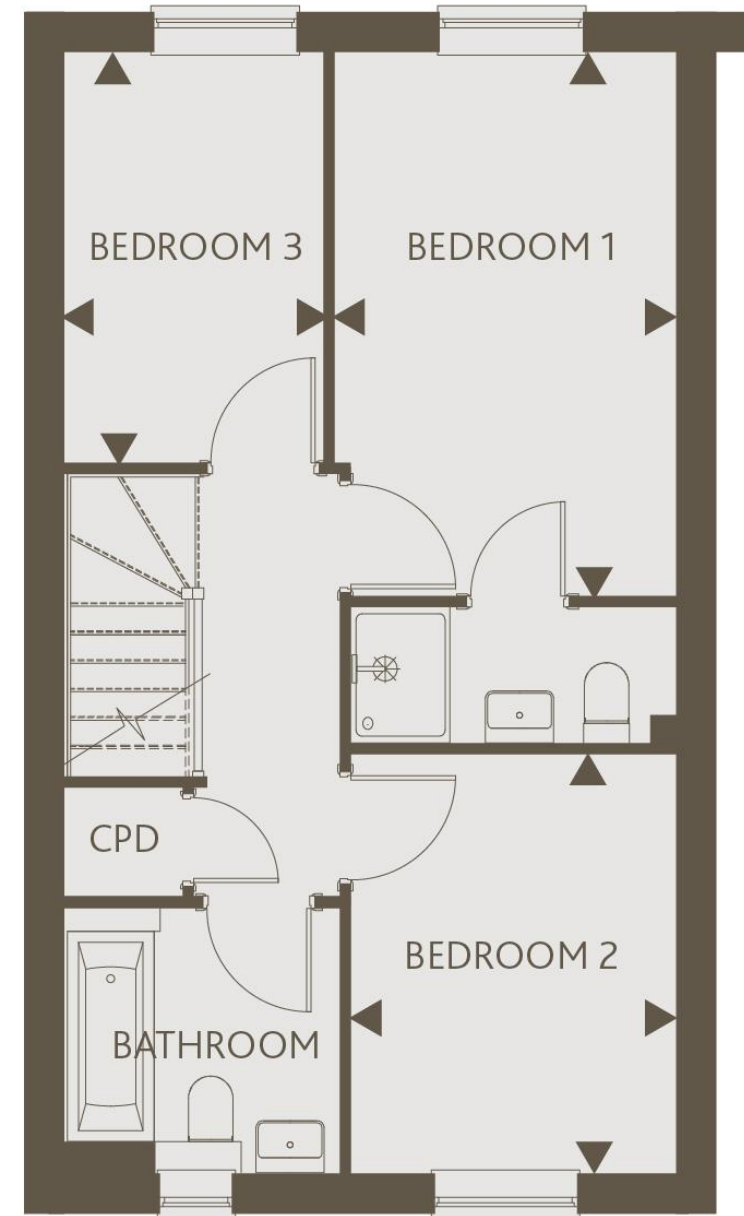
BEDROOM 2  
8'7" x 11'2"    2.64m x 3.41m

BEDROOM 3  
6'10" x 10'11"    2.10m x 3.35m

These particulars do not constitute any part of an offer or contract. Any intended purchasers must satisfy themselves as to the correctness of each of the statements contained in these particulars. All floor layouts may be subject to changes. The dimensions given on the plan are subject to minor variations intended for guidance only and are not to be used for carpets, appliances or items of furniture.



GROUND FLOOR



FIRST FLOOR







## Three Bed House Plots 2, 22 and 23\*

(\* handed)

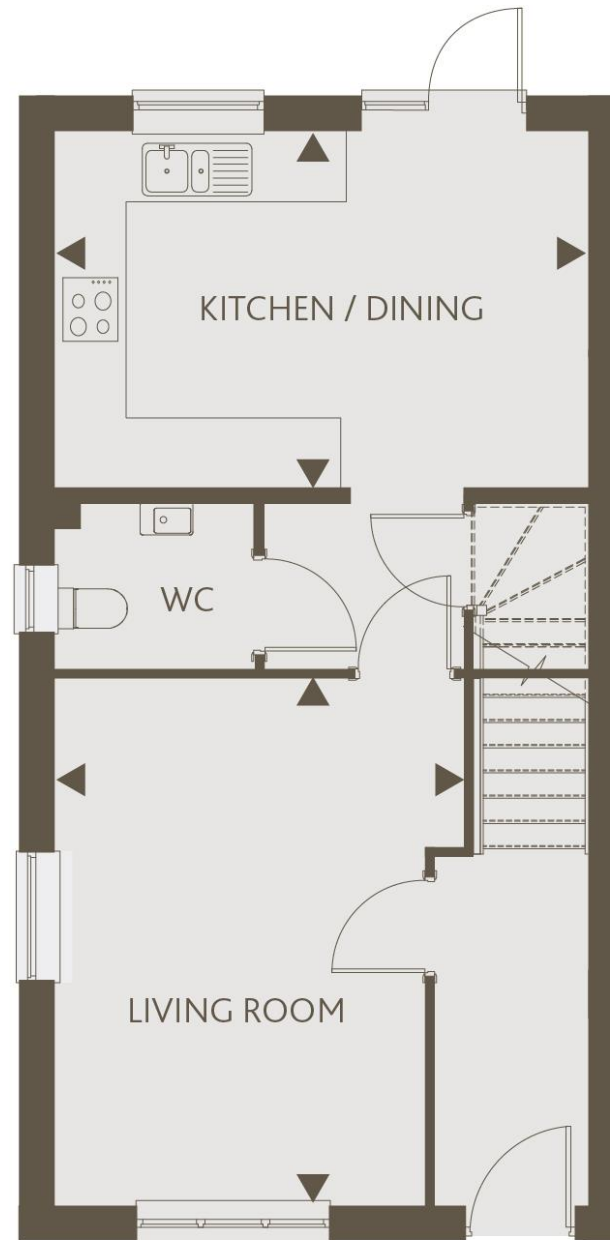
KITCHEN / DINING  
16'0" x 10'9"    4.89m x 3.30m

LIVING ROOM  
12'1" x 15'10"    3.70m x 4.83m

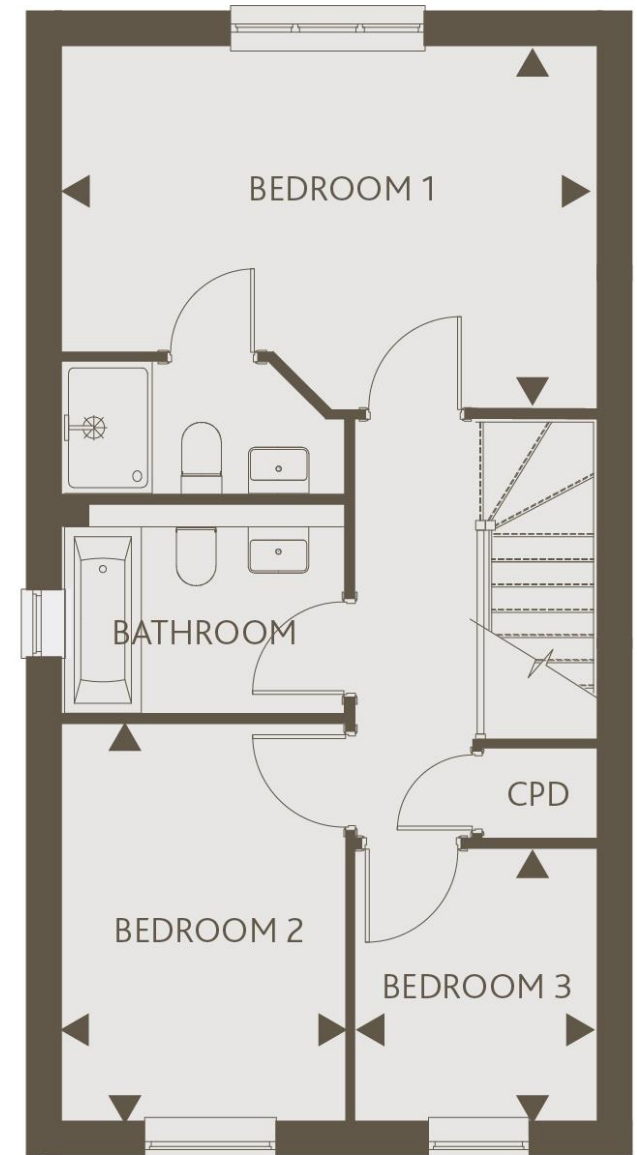
BEDROOM 1  
16'0" x 10'11"    4.89m x 3.35m

BEDROOM 2  
8'5" x 11'11"    2.59m x 3.64m

BEDROOM 3  
7'3" x 8'7"    2.23m x 2.62m



GROUND FLOOR



FIRST FLOOR

These particulars do not constitute any part of an offer or contract. Any intended purchasers must satisfy themselves as to the correctness of each of the statements contained in these particulars. All floor layouts may be subject to changes. The dimensions given on the plan are subject to minor variations intended for guidance only and are not to be used for carpets, appliances or items of furniture.





# Three Bedroom House Plots 43 & 47\*

(\* handed)

## KITCHEN/DINING

16'2" x 11'1"    4.94m x 3.38m

## LIVING ROOM

16'2" x 11'7"    4.94m x 3.55m

## BEDROOM 1

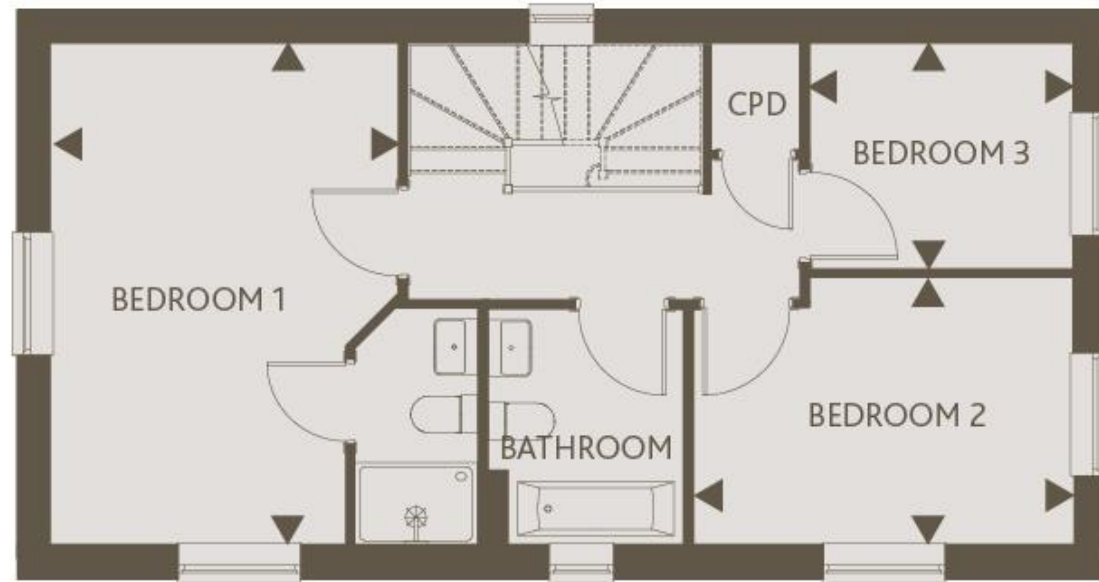
16'2" x 11'3"    4.94m x 3.43m

## BEDROOM 2

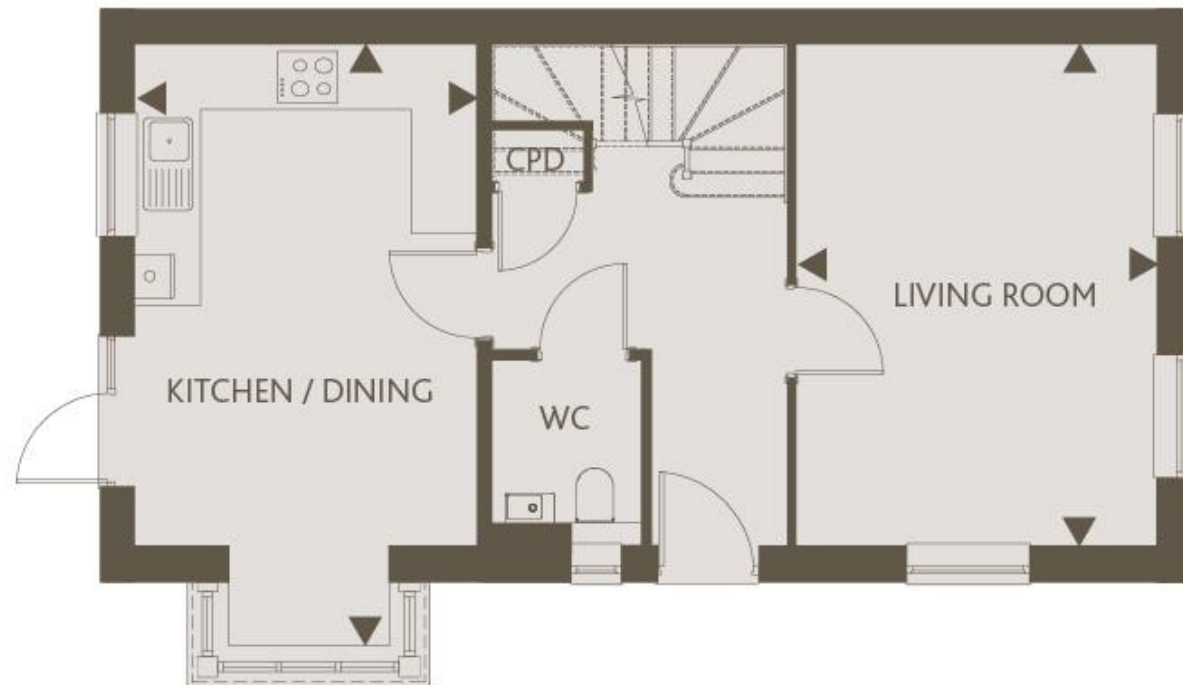
8'7" x 12'2"    2.64m x 3.71m

## BEDROOM 3

10'7" x 8'6"    2.23m x 2.61m



FIRST FLOOR



GROUND FLOOR

These particulars do not constitute any part of an offer or contract. Any intended purchasers must satisfy themselves as to the correctness of each of the statements contained in these particulars. All floor layouts maybe subject to changes. The dimensions given on the plan are subject to minor variations intended for guidance only and are not be used for carpets, appliances or items of furniture.





## Four Bed House Plots 19, 20, 49\* (\* handed)

KITCHEN / DINING  
21'3" x 12'2" 6.49m x 3.72m

LIVING ROOM  
11'2" x 14'9" 3.42m x 4.51m

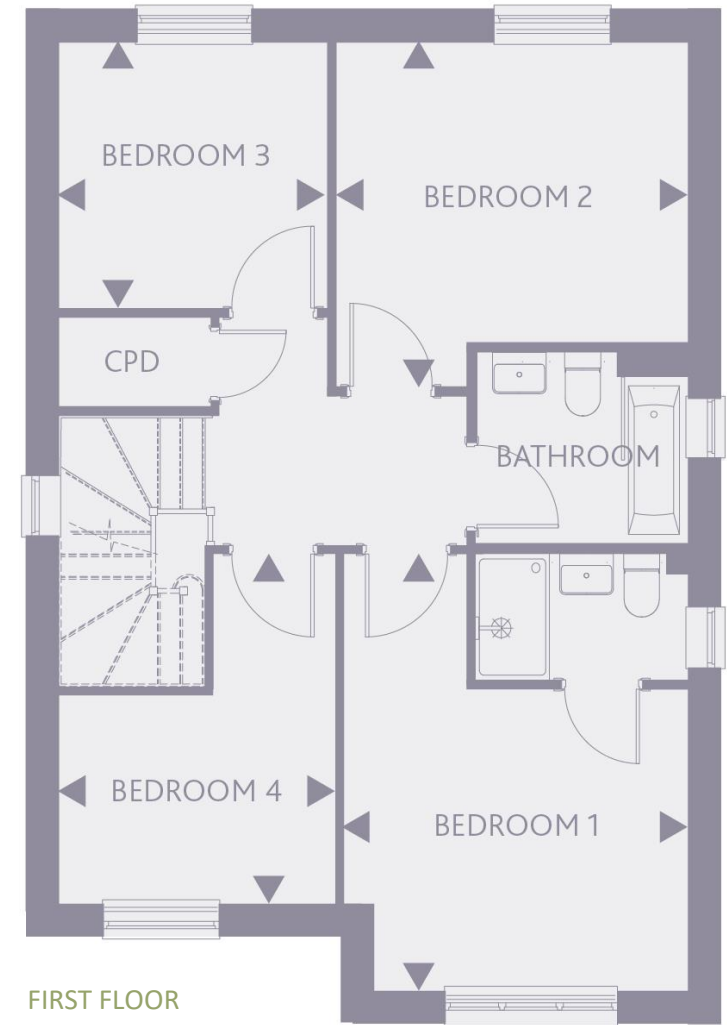
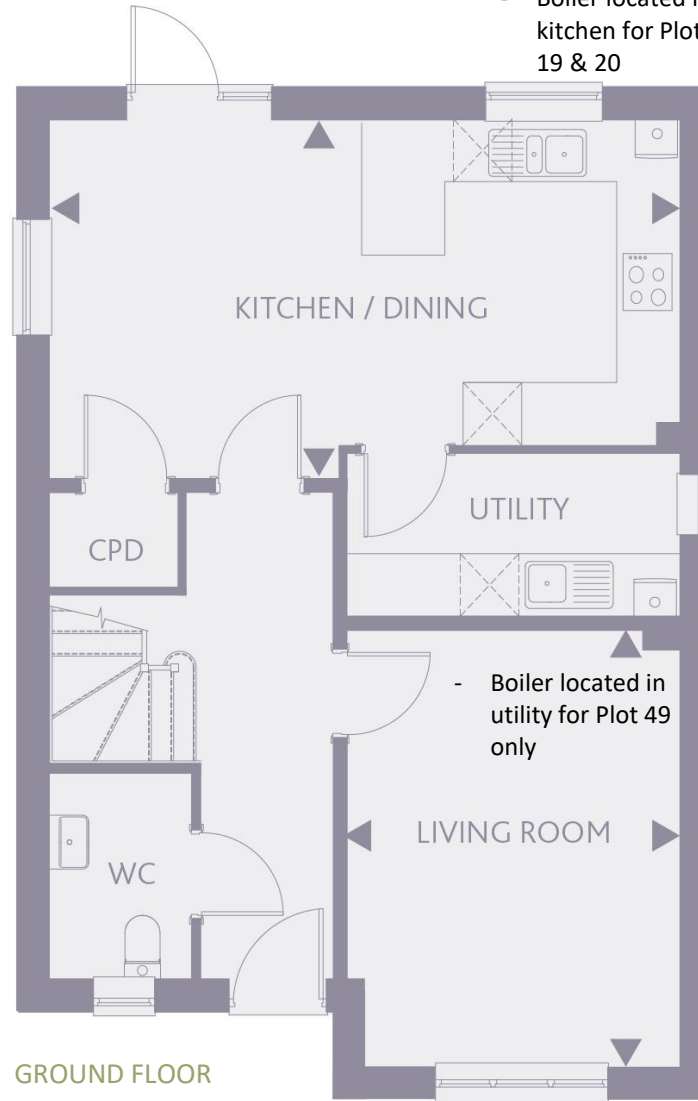
BEDROOM 1  
11'8" x 14'9" 3.56m x 4.51m

BEDROOM 2  
11'11" x 11'7" 3.64m x 3.55m

BEDROOM 3  
9'1" x 9'9" 2.78m x 2.77m

BEDROOM 4  
9'4" x 11'9" 2.87m x 3.60m

- Boiler located in kitchen for Plots 19 & 20



These particulars do not constitute any part of an offer or contract. Any intended purchasers must satisfy themselves as to the correctness of each of the statements contained in these particulars. All floor layouts maybe subject to changes. The dimensions given on the plan are subject to minor variations intended for guidance only and are not be used for carpets, appliances or items of furniture.







## Four Bedroom House Plots 48\* & 50

(\* handed)

### KITCHEN/DINING

21'3" x 12'2" 6.49m x 3.72m

### LIVING ROOM

11'3" x 14'9" 3.44m x 4.51m

### BEDROOM 1

11'8" x 14'9" 3.56m x 4.50m

### BEDROOM 2

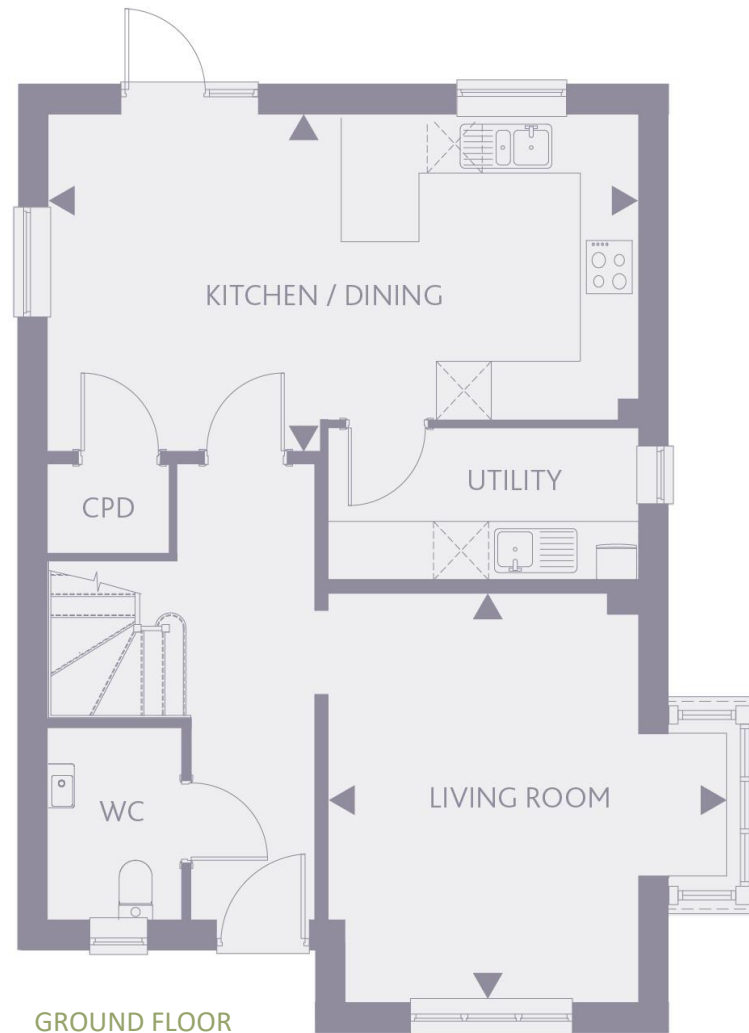
11'11" x 11'7" 3.64m x 3.55m

### BEDROOM 3

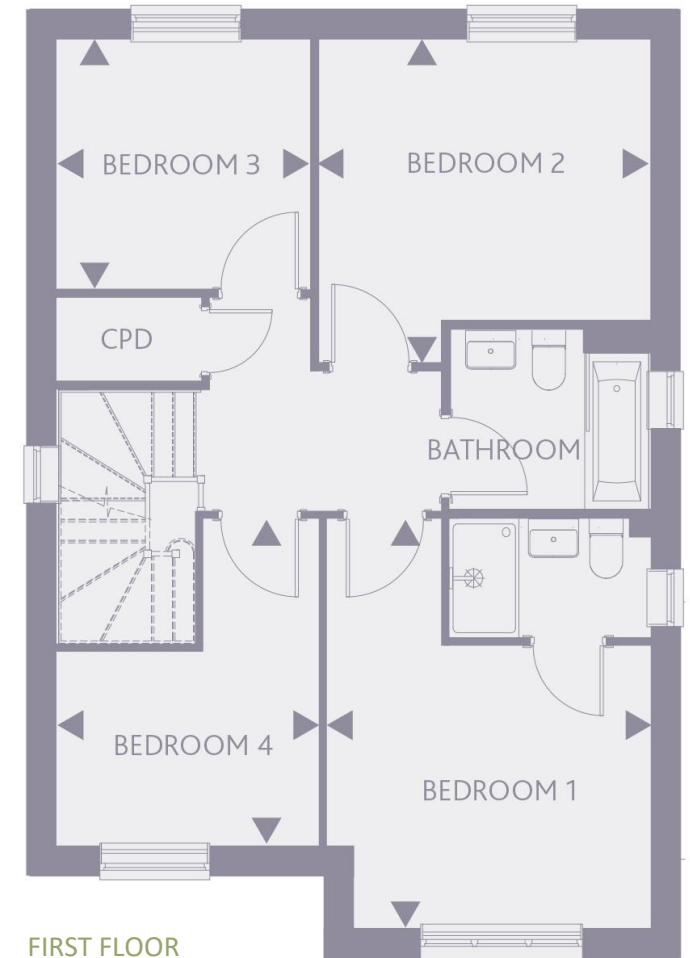
9'1" x 9'1" 2.78m x 2.77m

### BEDROOM 4

9'4" x 10'9" 2.87m x 3.29m



GROUND FLOOR












FIRST FLOOR

These particulars do not constitute any part of an offer or contract. Any intended purchasers must satisfy themselves as to the correctness of each of the statements contained in these particulars. All floor layouts may be subject to changes. The dimensions given on the plan are subject to minor variations intended for guidance only and are not to be used for carpets, appliances or items of furniture.





# SITE PLAN

-  1 bedroom house
-  2-bedroom house
-  3-bedroom house
-  4-bedroom house
-  Rented properties
-  Shared ownership properties
-  EV charging point
-  Future use of EV charging point
-  Plot 1 is the show home & will be released at a later date.

These particulars do not constitute any part of an offer or contract. Any intended purchasers must satisfy themselves as to the correctness of each of the statements contained in these particulars. All floor layouts may be subject to changes. The dimensions given on the plan are subject to minor variations intended for guidance only and are not to be used for carpets, appliances or items of furniture.



Trading as  
**settle** *Paradigm*

For more information

0300 303 8046

[www.settlesales.co.uk](http://www.settlesales.co.uk)

