

Berwick Green - Cribbs Causeway, Bristol, BS10 7TG

The Blandford

2 bedroom home

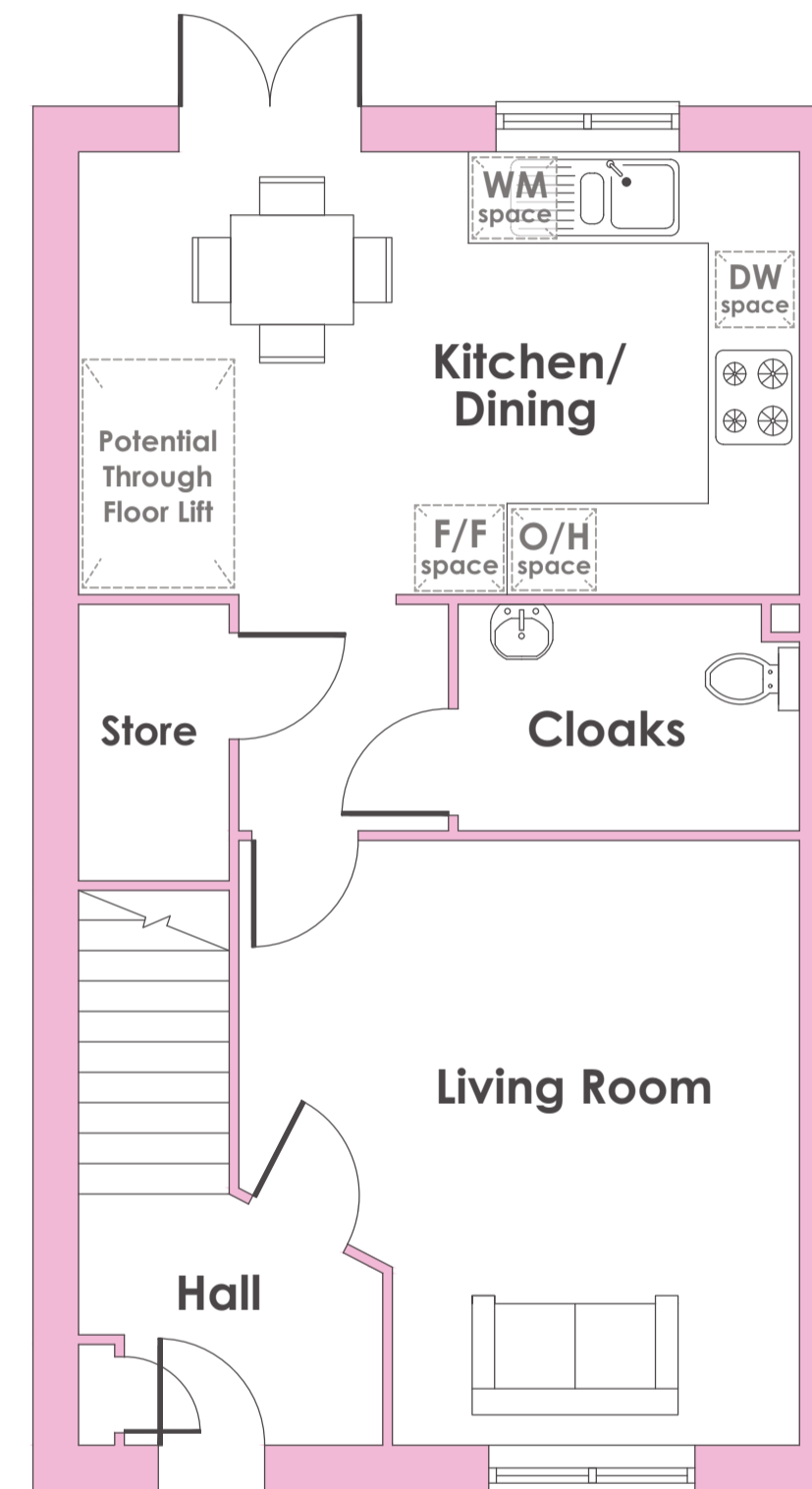


Local area connection

To meet the needs of local people most of our homes for sale require a local connection to the area. The connection criteria varies between sites, but generally it's based on:

- Being a resident (or employed within) the area for a number of years (usually between 2 to 5)
- Family connections – for example, parent, grandparent, child, grandchild or adult sibling – who have lived in the area for at least three years

Priority will be given to applicants who have a connection to South Gloucestershire.



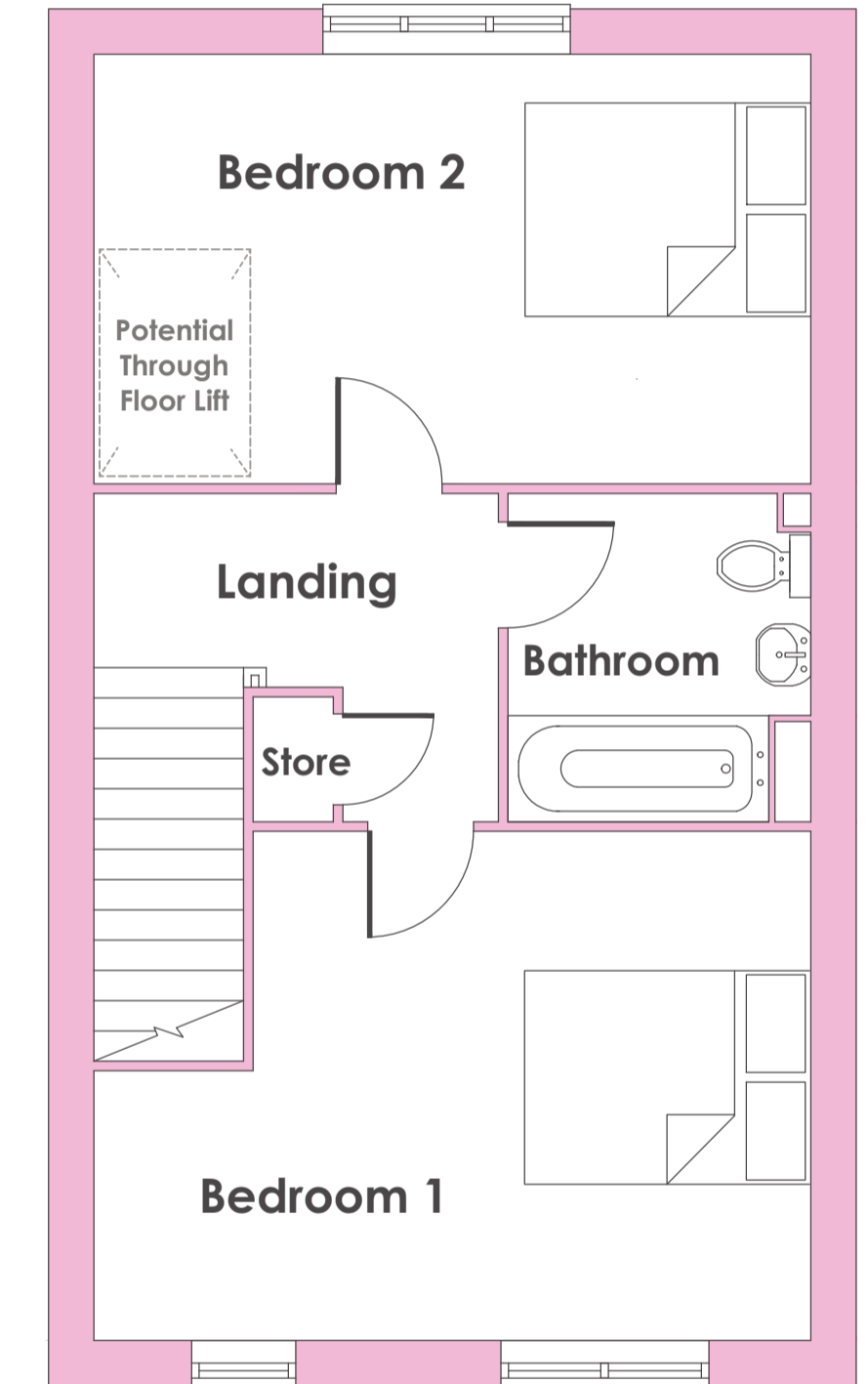
Ground floor

Kitchen / Dining

4.74m x 2.91m / 15'7" x 9'7"

Lounge

3.97m x 3.69m / 13'0" x 12'1"



First floor

Bedroom 1

4.74m x 3.36m / 15'7" x 11'1"

Bedroom 2

4.74m x 2.84m / 15'7" x 9'4"

- Energy efficient two bedroom home
- Open-plan kitchen-diner
- French doors to rear garden
- Integrated oven, hob and extractor hood
- Guest cloakroom
- 10 year NHBC warranty

bromfordhomes.co.uk/berwickgreen

Due to the nature of construction room sizes, window positions, window and door styles, brick and tile colours, elevational treatments and external landscaping may vary. Purchasers are advised to satisfy themselves as to their accuracy and are not intended to be used for carpet sizes, appliance spaces or items of furniture. Floor areas are measured at widest point. Please speak with your sales consultant for individual plot, electrical, heating and kitchen spec information. Images for illustrative purposes only.

We follow Homes England Guidelines on First Come, First Served policies for Shared Ownership homes. Please visit [our policies page](#) for full policy details

Bromford.
Shared Ownership