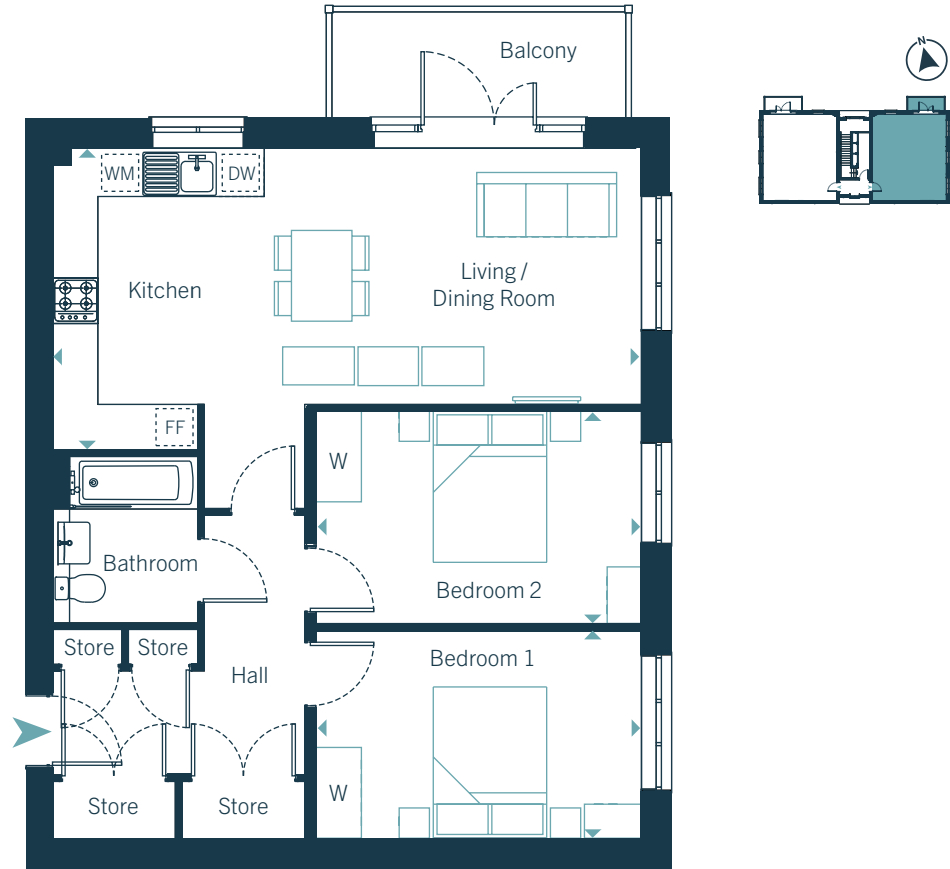


FYFIELD ROAD

Flat 4 Gilmour House,
Milnthorpe Lane,
Ongar, CM5 0GD

PLOT 4



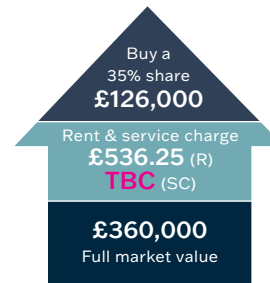
First floor

Dimensions

Living / Dining / Kitchen	7.83m x 4.01m	25' 8" x 13' 2"
Bedroom 1	4.35m x 2.73m	14' 3" x 9' 0"
Bedroom 2	4.35m x 2.79m	14' 3" x 9' 2"
Total Gross Internal Area	71.96 m² / 774 ft²	

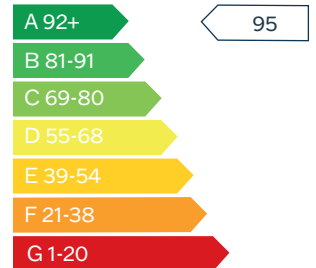
FF - Fridge/Freezer | DW - Dishwasher | WD - Washer/Dryer | W - Wardrobe

Shared Ownership Example



Rent & service charges are monthly.
Rent charged at 2% on unsold share.

Predicted Energy Assessment



Register your interest today

Call: 0207 539 3745 Email: b3@redloft.co.uk

Visit: b3athome.co.uk/find-a-home/fyfield-road/ Sat Nav: CM5 0AL

Disclaimer: We have made every effort to accurately describe the property. However, prospective buyers should treat these details as a general guide, not as definitive representations or facts. All room dimensions are subject to a 5% tolerance and may vary from plot to plot. Furniture layouts are for illustrative purposes and are indicative only.

