

LOMBARD  
SQUARE

---

Shared Ownership  
Collection





# FIND YOUR PERFECT PLACE

THE RIVER THAMES  
10 Mins walk

ROYAL ARSENAL RIVERSIDE  
14 Mins walk  
WOOLWICH STATION  
14 Mins walk

Broadwater Green

WESTERN WAY

HOLLIDGE HOUSE

FIELDING HOUSE

HOPPER HOUSE

GILHAM HOUSE

CONCIERGE

GYM

KUBRICK HOUSE

DRAY HOUSE

BURRELL HOUSE

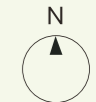
NATHAN WAY

PETTMAN CRESCENT

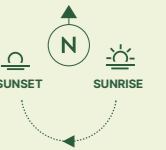
PLUMSTEAD STATION  
4 Mins walk

- Future Phase
- Affordable Homes
- Private Sale

This siteplan is indicative only and subject to change. In line with our policy of continuous improvement, we reserve the right to alter the layout, building style, landscaping and specification at any time without notice. Walking distances are approximate and taken from Google maps.



# KUBRICK HOUSE



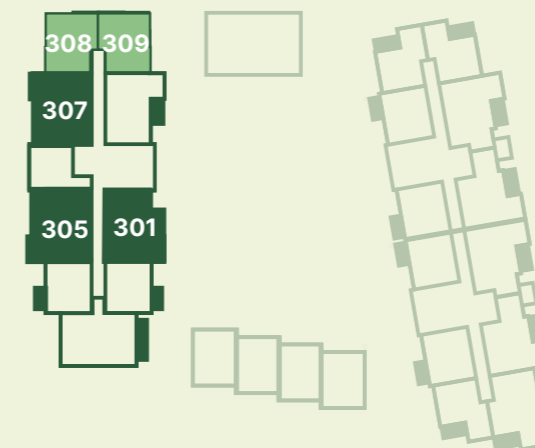
## FIRST FLOOR



## SECOND FLOOR



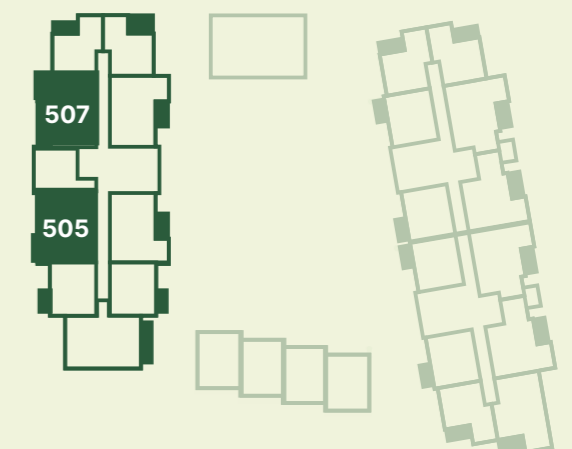
## THIRD FLOOR



## FOURTH FLOOR



## FIFTH FLOOR



1 BED APARTMENT

2 BED APARTMENT

# 1 BED KUBRICK HOUSE

Living/Kitchen/Dining	6.95m x 3.60m	22' 9" x 11' 9"
Bedroom	3.18m x 3.75m	10' 5" x 12' 3"
Bathroom	1.98m x 2.28m	6' 5" x 7' 6"
Balcony	1.53m x 3.63m	5' 0" x 11' 11"
<b>Total Internal Area</b>	<b>50.7 sq m</b>	<b>546 sq ft</b>
<b>Total Internal &amp; External Area</b>	<b>56.2 sq m</b>	<b>605 sq ft</b>

# 1 BED KUBRICK HOUSE

Living/Kitchen/Dining	3.72m x 6.10m	12' 2" x 20' 0"
Bedroom	3.43m x 3.27m	11' 3" x 10' 9"
Bathroom	1.98m x 2.28m	6' 5" x 7' 6"
Balcony	3.67m x 1.68m	12' 0" x 5' 6"
<b>Total Internal Area</b>	<b>50.5 sq m</b>	<b>544 sq ft</b>
<b>Total Internal &amp; External Area</b>	<b>56.6 sq m</b>	<b>609 sq ft</b>

Apartments: 202, 204\*



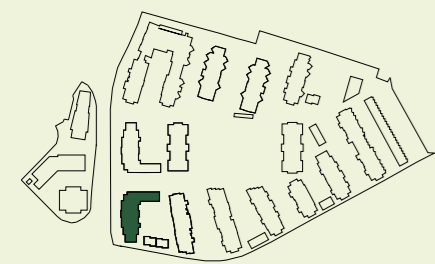
Apartments: 208, 308, 309\*



SITE PLAN

APARTMENT LOCATION

LEVEL/PLOT

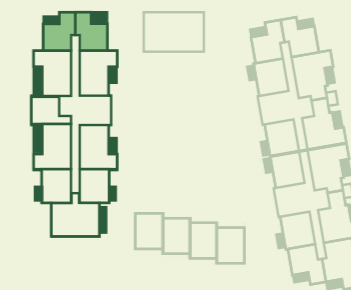
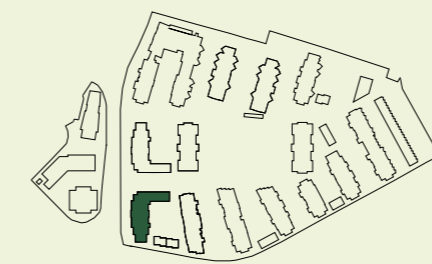


2 202, 204\*

SITE PLAN

APARTMENT LOCATION

LEVEL/PLOT



3 308, 309  
2 208

\* Handed to floorplan shown ▶ Entrance C-Cupboard HIU-Heat Interface Unit MVHR-Mechanical Ventilation with Heat Recovery Utility  
W-Wardrobe WM-Washing Machine DW-Dishwasher FF-Fridge Freezer

\* Handed to floorplan shown ▶ Entrance C-Cupboard HIU-Heat Interface Unit MVHR-Mechanical Ventilation with Heat Recovery Utility  
W-Wardrobe WM-Washing Machine DW-Dishwasher FF-Fridge Freezer

# 1 BED

## KUBRICK HOUSE

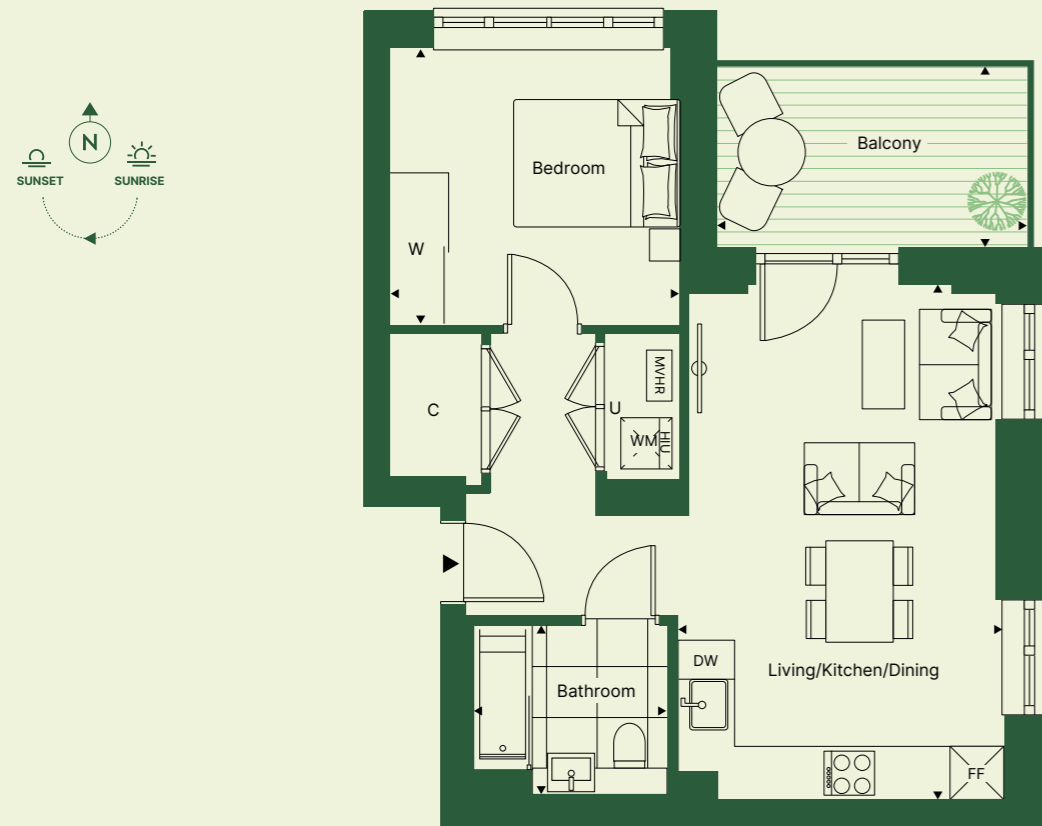
Living/Kitchen/Dining	3.72m x 6.10m	12' 2" x 20' 0"
Bedroom	3.43m x 3.27m	11' 3" x 10' 9"
Bathroom	1.98m x 2.28m	6' 5" x 7' 6"
Balcony	3.67m x 1.68m	12' 0" x 5' 6"
<b>Total Internal Area</b>	<b>50.5 sq m</b>	<b>544 sq ft</b>
<b>Total Internal &amp; External Area</b>	<b>58.6 sq m</b>	<b>631 sq ft</b>

# 1 BED

## KUBRICK HOUSE

Living/Kitchen/Dining	6.95m x 3.60m	22' 9" x 11' 9"
Bedroom	3.18m x 3.75m	10' 5" x 12' 3"
Bathroom	1.98m x 2.28m	6' 5" x 7' 6"
Terrace	1.89m x 7.19m	6' 2" x 23' 7"
<b>Total Internal Area</b>	<b>50.7 sq m</b>	<b>546 sq ft</b>
<b>Total Internal &amp; External Area</b>	<b>64.2 sq m</b>	<b>691 sq ft</b>

Apartment: 209



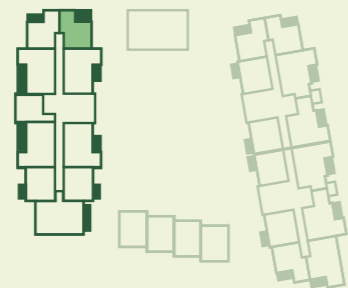
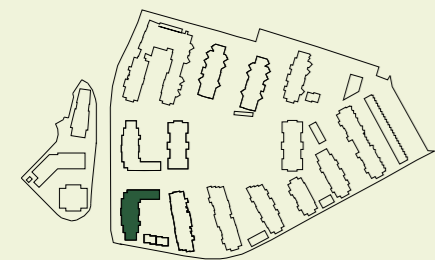
Apartment: 103



SITE PLAN

APARTMENT LOCATION

LEVEL/PLOT

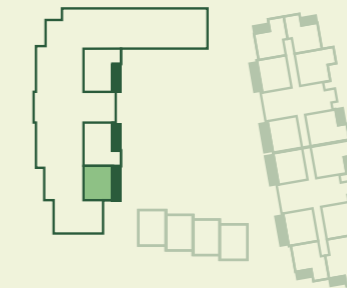
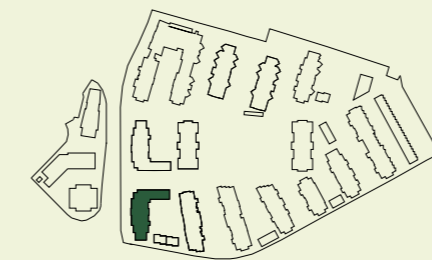


2 209

SITE PLAN

APARTMENT LOCATION

LEVEL/PLOT



1 103

► Entrance C-Cupboard HIU-Heat Interface Unit MVHR-Mechanical Ventilation with Heat Recovery Utility  
W-Wardrobe WM-Washing Machine DW-Dishwasher FF-Fridge Freezer

► Entrance C-Cupboard HIU-Heat Interface Unit MVHR-Mechanical Ventilation with Heat Recovery Utility  
W-Wardrobe WM-Washing Machine DW-Dishwasher FF-Fridge Freezer

# 2 BED KUBRICK HOUSE


Living/Kitchen/Dining	8.62m x 3.34m	28' 3" x 10' 11"
Main Bedroom	4.10m x 2.75m	13' 5" x 9' 0"
Bedroom 2	2.80m x 4.04m	9' 2" x 13' 3"
En-Suite Bathroom	1.68m x 2.28m	5' 6" x 7' 6"
Shower Room	1.98m x 2.28m	6' 5" x 7' 6"
Balcony	1.83m x 3.81m	6' 0" x 12' 6"

<b>Total Internal Area</b>	<b>73.9 sq m</b>	<b>795 sq ft</b>
<b>Total Internal &amp; External Area</b>	<b>80.8 sq m</b>	<b>869 sq ft</b>

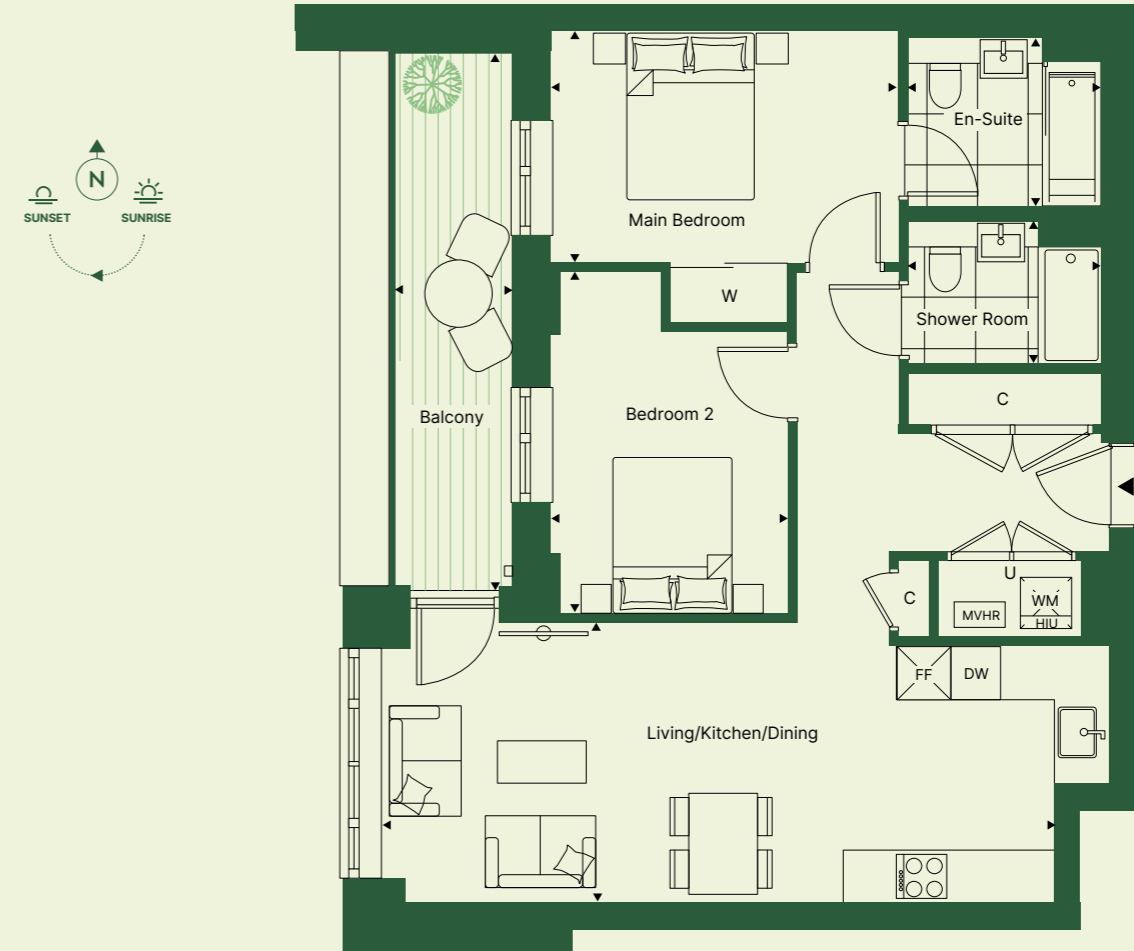
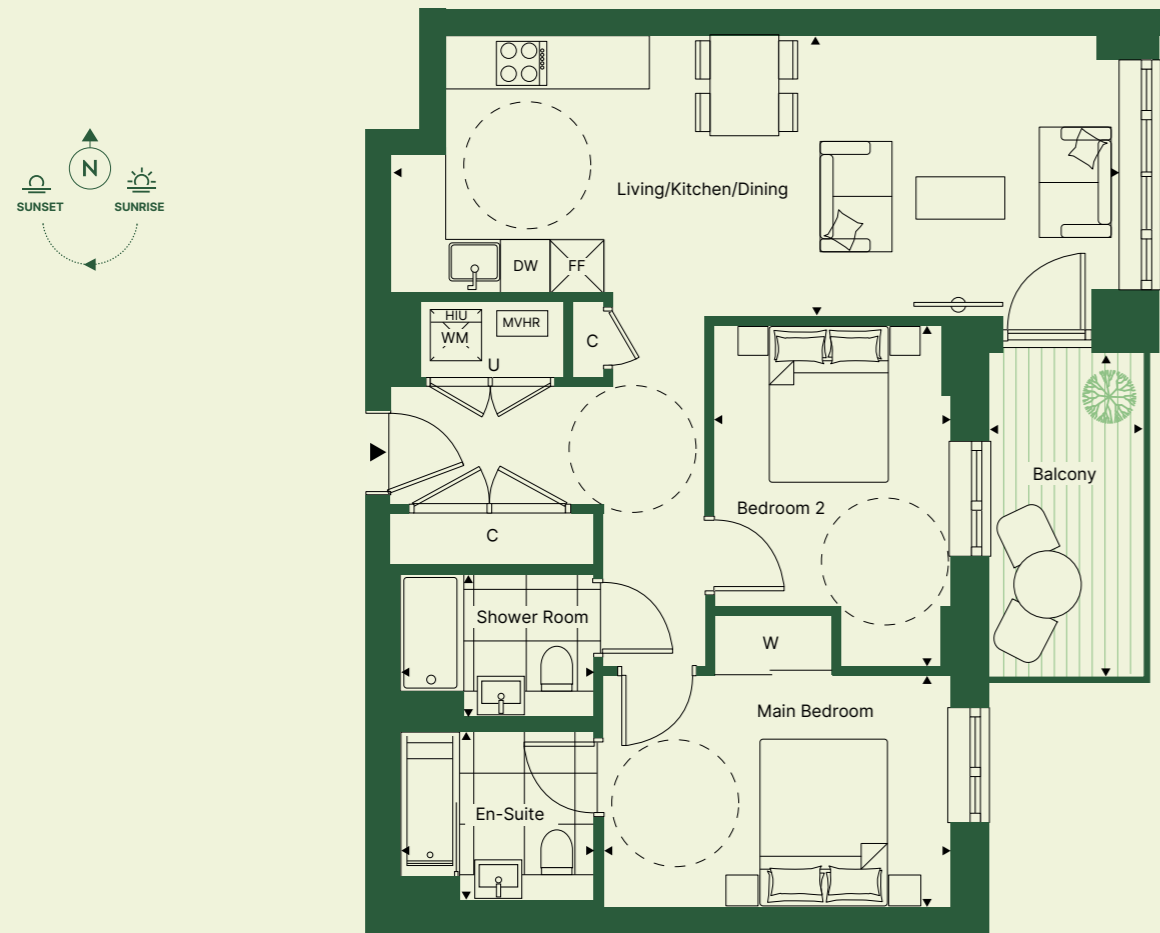
# 2 BED KUBRICK HOUSE

Living/Kitchen/Dining	8.63m x 3.34m	28' 3" x 10' 11"
Main Bedroom	4.10m x 2.75m	13' 5" x 9' 0"
Bedroom 2	2.80m x 4.04m	9' 2" x 13' 3"
En-Suite Bathroom	1.68m x 2.28m	5' 6" x 7' 6"
Shower Room	1.98m x 2.28m	6' 5" x 7' 6"
Balcony	1.42m x 6.32m	4' 8" x 20' 9"

<b>Total Internal Area</b>	<b>73.9 sq m</b>	<b>95 sq ft</b>
<b>Total Internal &amp; External Area</b>	<b>82.8 sq m</b>	<b>890 sq ft</b>

Apartment: 210 

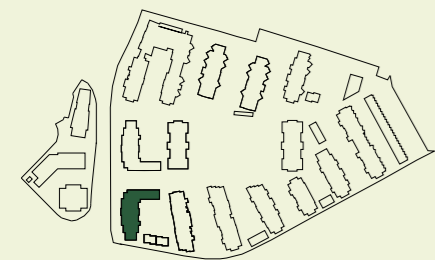
Apartments: 205, 305, 405, 505



SITE PLAN

APARTMENT LOCATION

LEVEL/PLOT

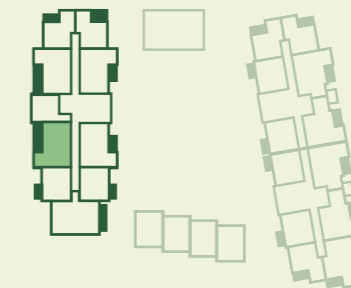
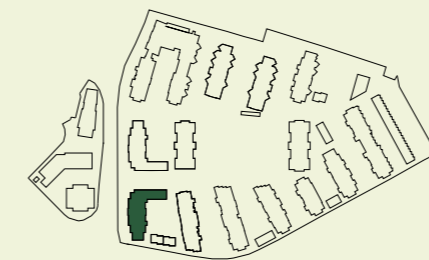


2	210
---	-----

SITE PLAN

APARTMENT LOCATION

LEVEL/PLOT



5	505
4	405
3	305
2	205

► Entrance C-Cupboard HIU-Heat Interface Unit MVHR-Mechanical Ventilation with Heat Recovery Utility  
W-Wardrobe WM-Washing Machine DW-Dishwasher FF-Fridge Freezer

► Entrance C-Cupboard HIU-Heat Interface Unit MVHR-Mechanical Ventilation with Heat Recovery Utility  
W-Wardrobe WM-Washing Machine DW-Dishwasher FF-Fridge Freezer

# 2 BED KUBRICK HOUSE

Living/Kitchen/Dining	8.62m x 3.34m	28' 3" x 10' 11"
Main Bedroom	4.10m x 2.75m	13' 5" x 9' 0"
Bedroom 2	2.80m x 4.04m	9' 2" x 13' 3"
En-Suite Bathroom	1.68m x 2.28m	5' 6" x 7' 6"
Shower Room	1.98m x 2.28m	6' 5" x 7' 6"
Balcony	1.42m x 6.32m	4' 8" x 20' 9"
<b>Total Internal Area</b>	<b>74.9 sq m</b>	<b>806 sq ft</b>
<b>Total Internal &amp; External Area</b>	<b>83.8 sq m</b>	<b>901 sq ft</b>

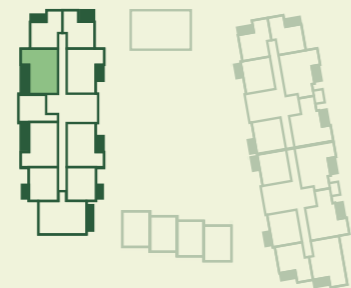
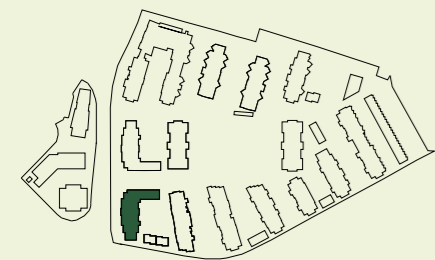
Apartments: 207, 507



SITE PLAN

APARTMENT LOCATION

LEVEL/PLOT



5	507
2	207

► Entrance C-Cupboard HIU-Heat Interface Unit MVHR-Mechanical Ventilation with Heat Recovery Utility  
W-Wardrobe WM-Washing Machine DW-Dishwasher FF-Fridge Freezer

# 2 BED KUBRICK HOUSE

Living/Kitchen/Dining	8.62m x 3.34m	28' 3" x 10' 11"
Main Bedroom	4.10m x 2.75m	13' 5" x 9' 0"
Bedroom 2	2.80m x 4.04m	9' 2" x 13' 3"
En-Suite Bathroom	1.68m x 2.28m	5' 6" x 7' 6"
Shower Room	1.98m x 2.28m	6' 5" x 7' 6"
Terrace	2.06m x 6.21m	6' 9" x 20' 4"
<b>Total Internal Area</b>	<b>73.9 sq m</b>	<b>795 sq ft</b>
<b>Total Internal &amp; External Area</b>	<b>86.6 sq m</b>	<b>931 sq ft</b>

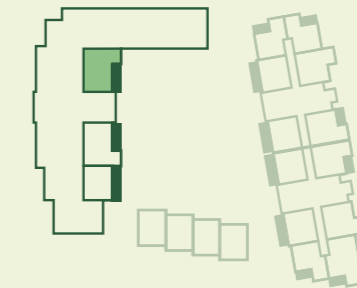
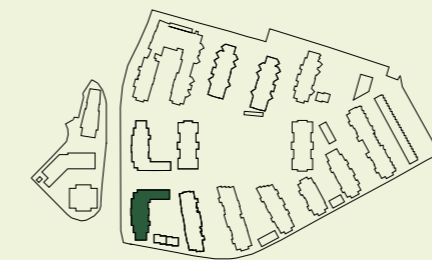
Apartment: 101



SITE PLAN

APARTMENT LOCATION

LEVEL/PLOT



1	101
---	-----

► Entrance C-Cupboard HIU-Heat Interface Unit MVHR-Mechanical Ventilation with Heat Recovery Utility  
W-Wardrobe WM-Washing Machine DW-Dishwasher FF-Fridge Freezer

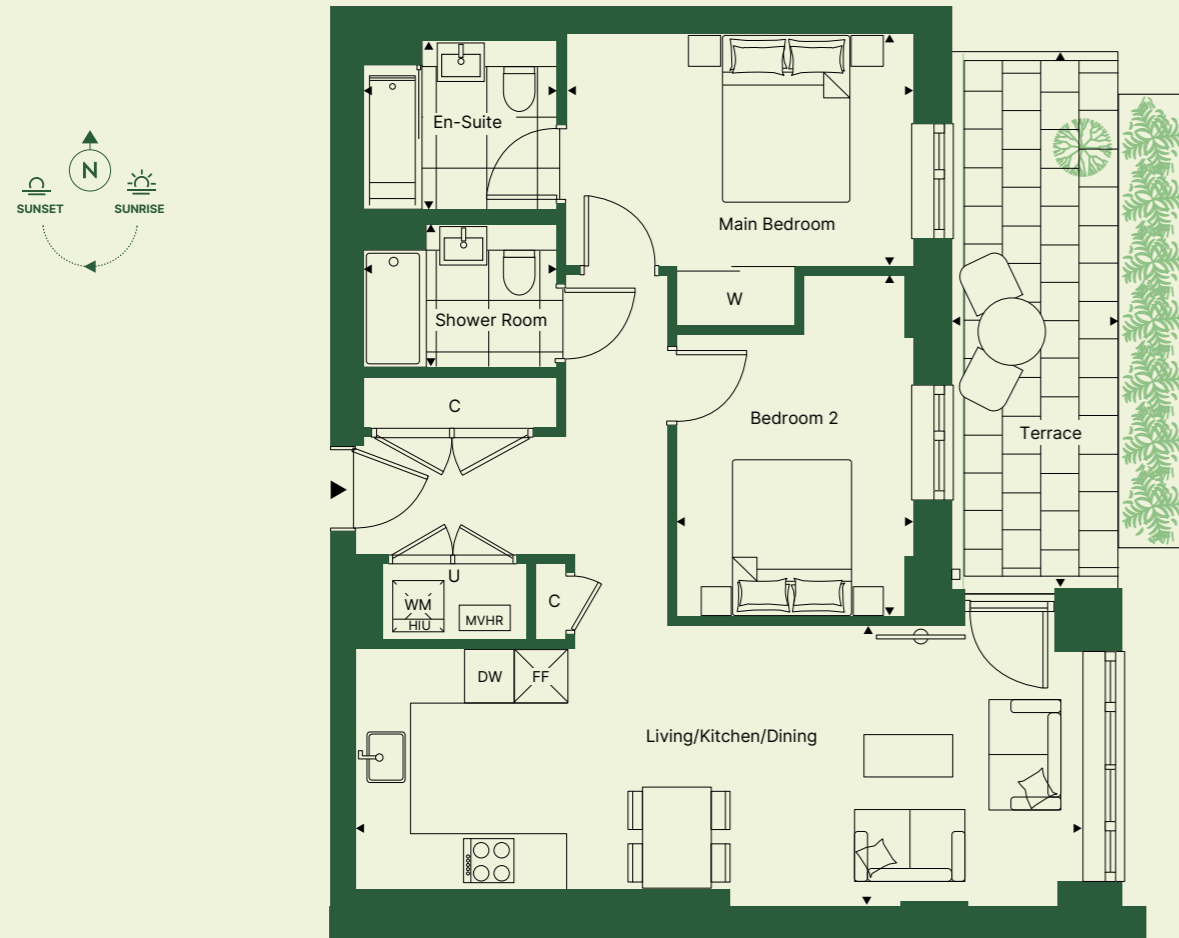
# 2 BED KUBRICK HOUSE

Living/Kitchen/Dining	8.62m x 3.34m	28' 3" x 10' 11"
Main Bedroom	4.10m x 2.75m	13' 5" x 9' 0"
Bedroom 2	2.80m x 4.04m	9' 2" x 13' 3"
En-Suite Bathroom	1.68m x 2.28m	5' 6" x 7' 6"
Shower Room	1.98m x 2.28m	6' 5" x 7' 6"
Terrace	2.04m x 6.43m	6' 8" x 21' 1"
<b>Total Internal Area</b>	<b>74 sq m</b>	<b>797 sq ft</b>
<b>Total Internal &amp; External Area</b>	<b>87.1 sq m</b>	<b>937 sq ft</b>

# 2 BED KUBRICK HOUSE

Living/Kitchen/Dining	8.62m x 3.34m	28' 3" x 10' 11"
Main Bedroom	4.10m x 2.75m	13' 5" x 9' 0"
Bedroom 2	2.80m x 4.04m	9' 2" x 13' 3"
En-Suite Bathroom	1.68m x 2.28m	5' 6" x 7' 6"
Shower Room	1.98m x 2.28m	6' 5" x 7' 6"
Balcony	1.83m x 3.81m	6' 0" x 12' 6"
<b>Total Internal Area</b>	<b>74.9 sq m</b>	<b>806 sq ft</b>
<b>Total Internal &amp; External Area</b>	<b>81.8 sq m</b>	<b>880 sq ft</b>

Apartment: 102



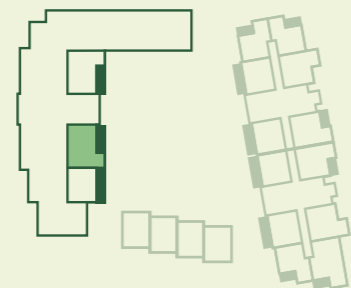
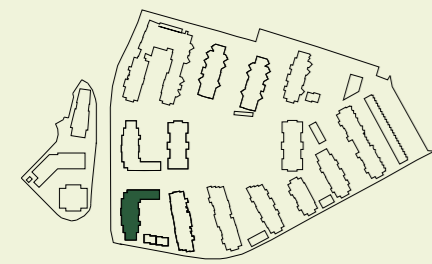
Apartment: 201, 301\*, 307, 401\*, 407



SITE PLAN

APARTMENT LOCATION

LEVEL/PLOT

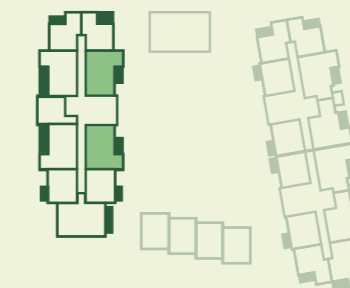
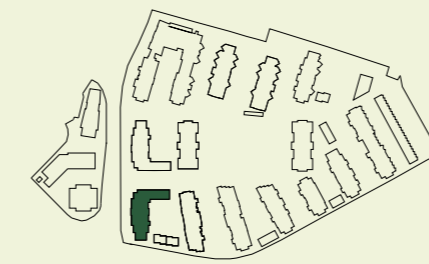


1 102

SITE PLAN

APARTMENT LOCATION

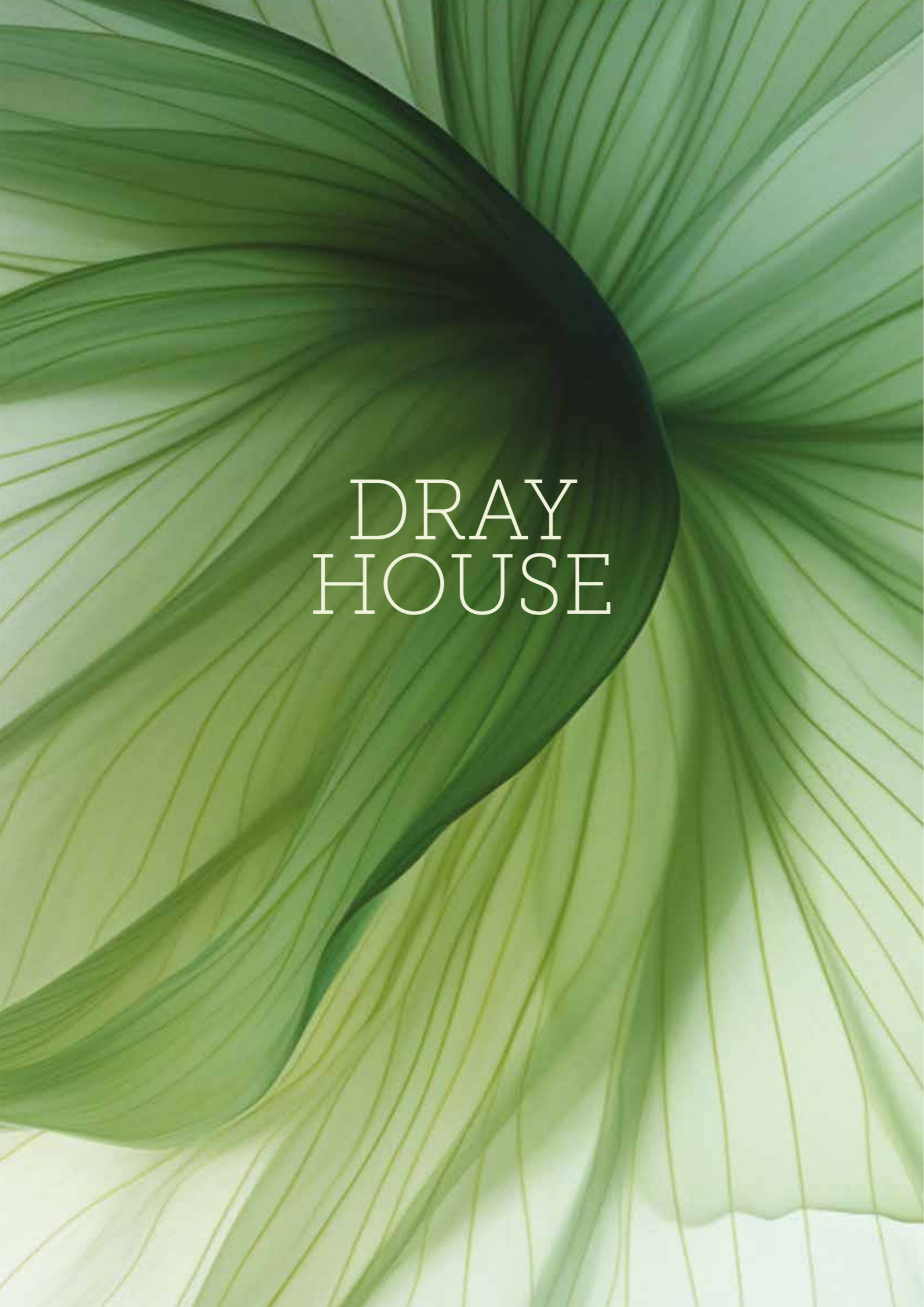
LEVEL/PLOT



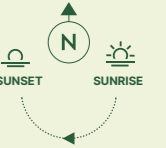
4 401\*, 407  
3 301\*, 307  
2 201

► Entrance C-Cupboard HIU-Heat Interface Unit MVHR-Mechanical Ventilation with Heat Recovery Utility  
W-Wardrobe WM-Washing Machine DW-Dishwasher FF-Fridge Freezer

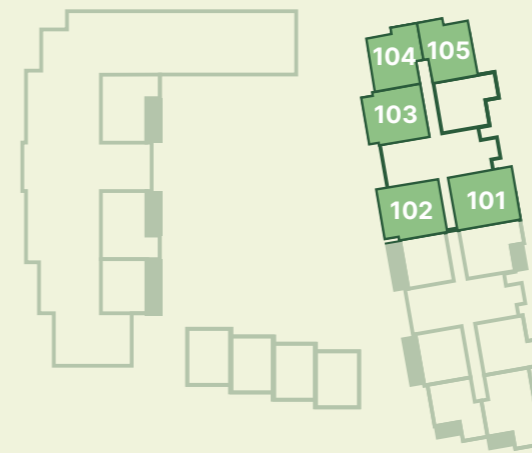
\* Handed to floorplan shown ► Entrance C-Cupboard HIU-Heat Interface Unit MVHR-Mechanical Ventilation with Heat Recovery Utility  
W-Wardrobe WM-Washing Machine DW-Dishwasher FF-Fridge Freezer



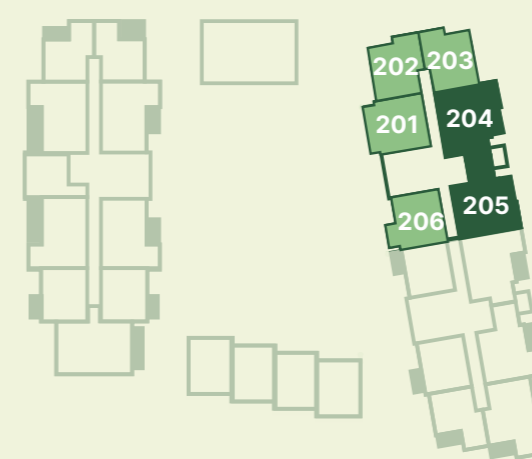
# DRAY HOUSE



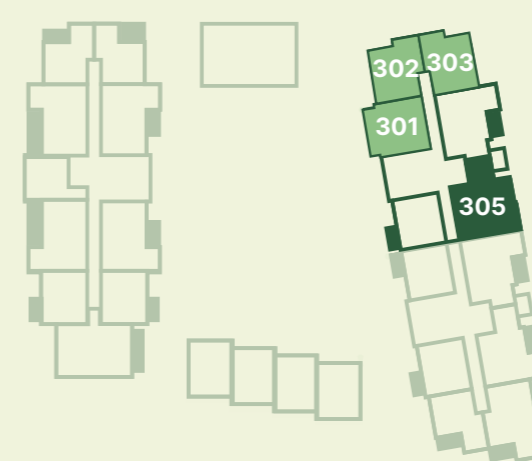
## FIRST FLOOR



## SECOND FLOOR



## THIRD FLOOR



## FOURTH FLOOR



## FIFTH FLOOR



1 BED APARTMENT

2 BED APARTMENT

# 1 BED DRAY HOUSE

Living/Kitchen/Dining	6.95m x 3.60m	22' 9" x 11' 9"
Bedroom	3.18m x 3.75m	10' 5" x 12' 3"
Bathroom	1.98m x 2.28m	6' 5" x 7' 6"
Balcony	1.53m x 3.63m	5' 0" x 11' 11"
<b>Total Internal Area</b>	<b>50.6 sq m</b>	<b>545 sq ft</b>
<b>Total Internal &amp; External Area</b>	<b>56.1 sq m</b>	<b>604 sq ft</b>

# 1 BED DRAY HOUSE

Living/Kitchen/Dining	7.07m x 3.61m	23' 2" x 11' 10"
Bedroom	3.26m x 3.75m	10' 8" x 12' 3"
Bathroom	1.98m x 2.28m	6' 5" x 7' 6"
Balcony	1.61m x 3.63m	5' 3" x 11' 11"
<b>Total Internal Area</b>	<b>50.7 sq m</b>	<b>546 sq ft</b>
<b>Total Internal &amp; External Area</b>	<b>56.5 sq m</b>	<b>608 sq ft</b>

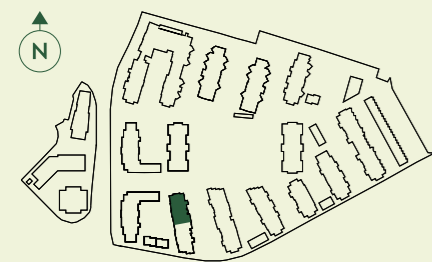
Apartment: 206



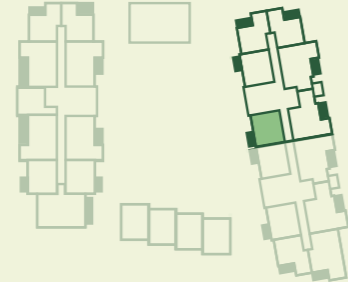
Apartments: 201, 301



SITE PLAN



APARTMENT LOCATION



LEVEL/PLOT

2 206

SITE PLAN



APARTMENT LOCATION



LEVEL/PLOT

3 301  
2 201

► Entrance C-Cupboard HIU-Heat Interface Unit MVHR-Mechanical Ventilation with Heat Recovery Utility  
W-Wardrobe WM-Washing Machine DW-Dishwasher FF-Fridge Freezer

► Entrance C-Cupboard HIU-Heat Interface Unit MVHR-Mechanical Ventilation with Heat Recovery Utility  
W-Wardrobe WM-Washing Machine DW-Dishwasher FF-Fridge Freezer

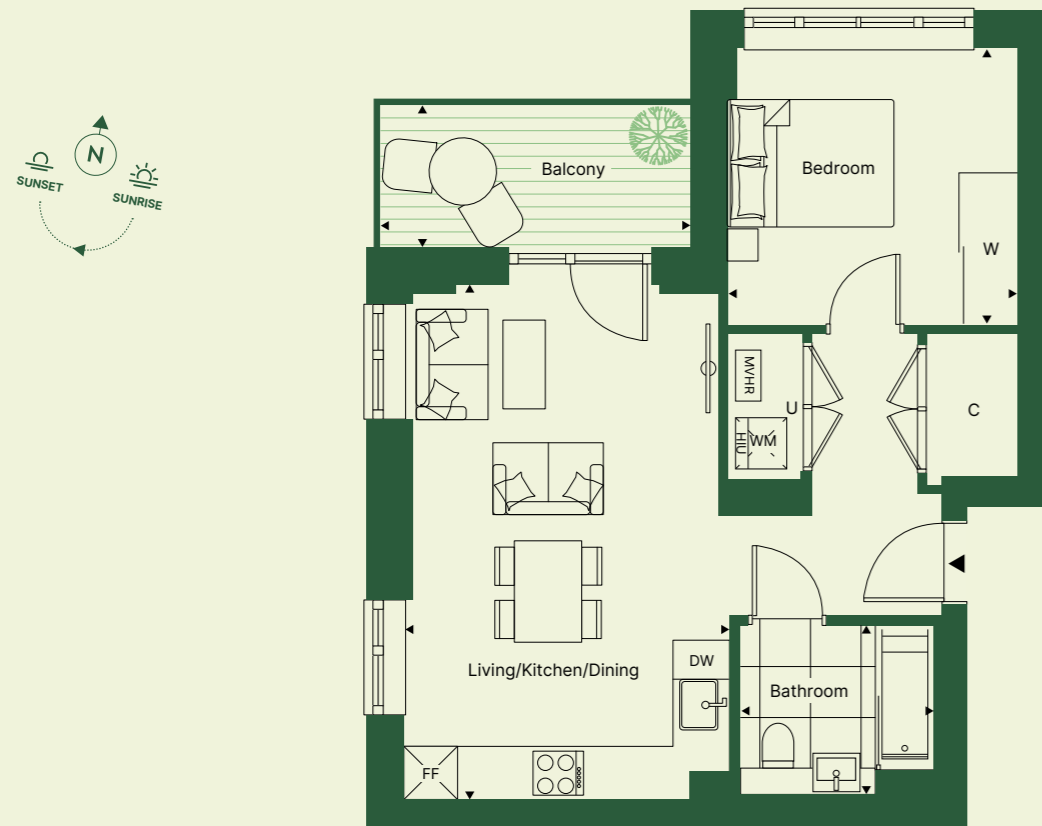
# 1 BED DRAY HOUSE

Living/Kitchen/Dining	3.72m x 6.10m	12' 2" x 20' 0"
Bedroom	3.43m x 3.27m	11' 3" x 10' 9"
Bathroom	1.98m x 2.28m	6' 5" x 7' 6"
Balcony	3.67m x 1.68m	12' 0" x 5' 6"
<b>Total Internal Area</b>	<b>50.5 sq m</b>	<b>544 sq ft</b>
<b>Total Internal &amp; External Area</b>	<b>56.6 sq m</b>	<b>609 sq ft</b>

# 1 BED DRAY HOUSE

Living/Kitchen/Dining	6.95m x 3.60m	22' 9" x 11' 9"
Bedroom	3.18m x 3.75m	10' 5" x 12' 3"
Bathroom	1.98m x 2.28m	6' 5" x 7' 6"
Terrace	2.04m x 6.43m	6' 8" x 21' 1"
<b>Total Internal Area</b>	<b>50.6 sq m</b>	<b>545 sq ft</b>
<b>Total Internal &amp; External Area</b>	<b>65 sq m</b>	<b>699 sq ft</b>

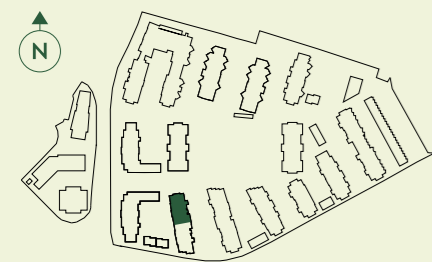
Apartments: 104, 105\*, 202, 203\*, 302, 303\*



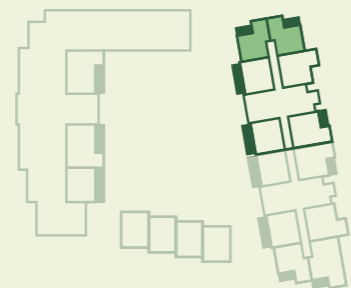
Apartment: 102



SITE PLAN



APARTMENT LOCATION

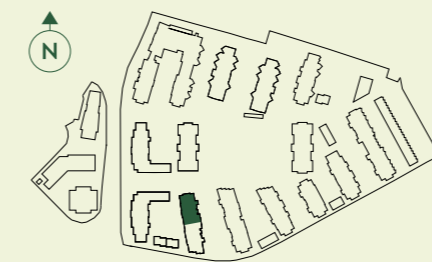


LEVEL/PLOT

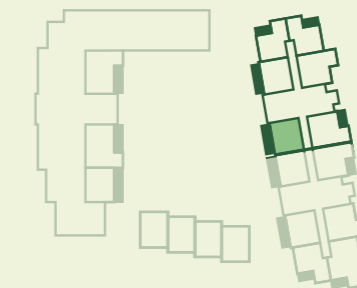
3	302, 303
2	202, 203
1	104, 105

\* Handed to floorplan shown ▶ Entrance C-Cupboard HIU-Heat Interface Unit MVHR-Mechanical Ventilation with Heat Recovery Utility  
W-Wardrobe WM-Washing Machine DW-Dishwasher FF-Fridge Freezer

SITE PLAN



APARTMENT LOCATION



LEVEL/PLOT

1	102
---	-----

▶ Entrance C-Cupboard HIU-Heat Interface Unit MVHR-Mechanical Ventilation with Heat Recovery Utility  
W-Wardrobe WM-Washing Machine DW-Dishwasher FF-Fridge Freezer

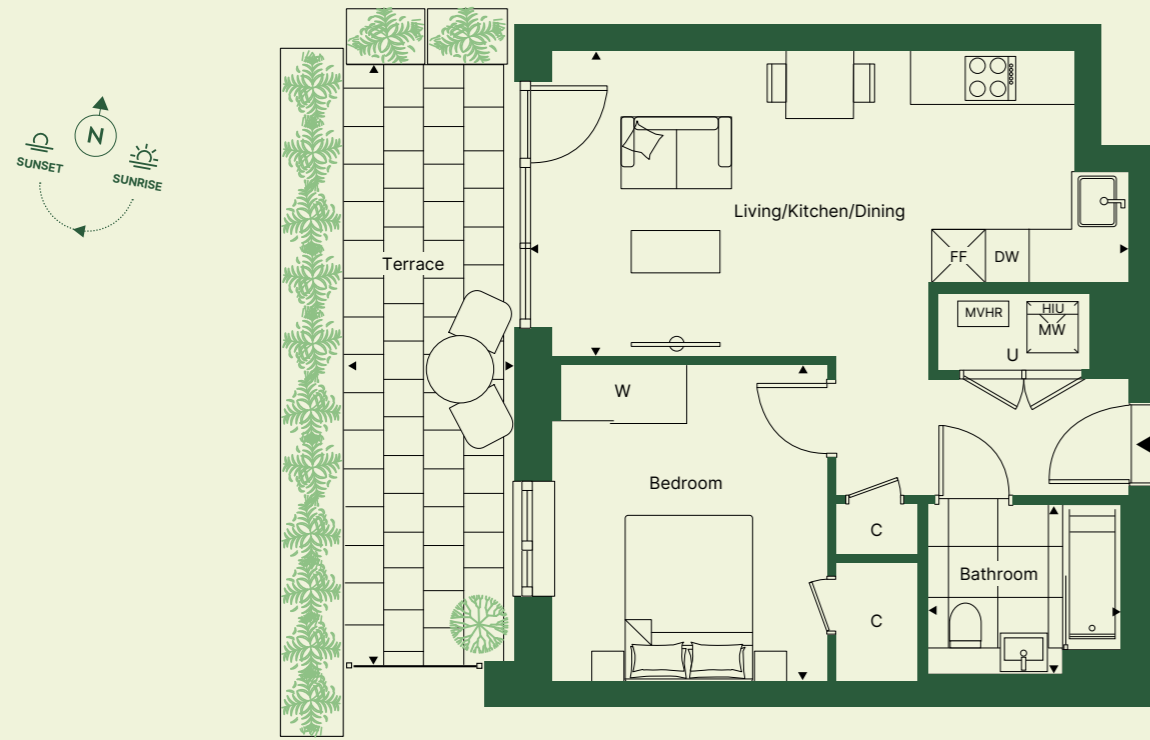
# 1 BED DRAY HOUSE

Living/Kitchen/Dining	7.07m x 3.61m	23' 2" x 11' 10"
Bedroom	3.26m x 3.75m	10' 8" x 12' 3"
Bathroom	1.98m x 2.28m	6' 5" x 7' 6"
Terrace	2.00m x 7.09m	6' 6" x 23' 3"
<b>Total Internal Area</b>	<b>50.7 sq m</b>	<b>546 sq ft</b>
<b>Total Internal &amp; External Area</b>	<b>64.8 sq m</b>	<b>697 sq ft</b>

# 1 BED DRAY HOUSE

Living/Kitchen/Dining	7.82m x 3.84m	25' 7" x 12' 7"
Bedroom	3.59m x 3.40m	11' 9" x 11' 2"
Bathroom	1.98m x 2.28m	6' 5" x 7' 6"
Balcony	1.68m x 3.71m	5' 6" x 12' 2"
<b>Total Internal Area</b>	<b>59.6 sq m</b>	<b>642 sq ft</b>
<b>Total Internal &amp; External Area</b>	<b>65.8 sq m</b>	<b>708 sq ft</b>

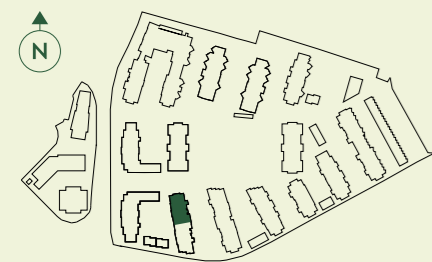
Apartment: 103



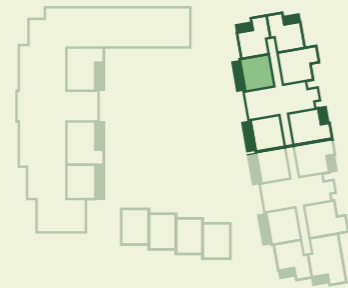
Apartment: 101



SITE PLAN



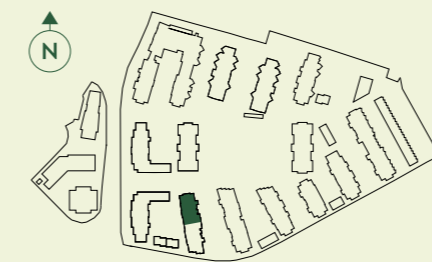
APARTMENT LOCATION



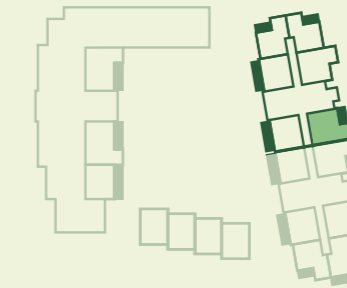
LEVEL/PLOT

1 103

SITE PLAN



APARTMENT LOCATION



LEVEL/PLOT

1 101

► Entrance C-Cupboard HIU-Heat Interface Unit MVHR-Mechanical Ventilation with Heat Recovery Utility  
W-Wardrobe WM-Washing Machine DW-Dishwasher FF-Fridge Freezer

\* Handed to floorplan shown ► Entrance C-Cupboard HIU-Heat Interface Unit MVHR-Mechanical Ventilation with Heat Recovery Utility  
W-Wardrobe WM-Washing Machine DW-Dishwasher FF-Fridge Freezer


# 2 BED DRAY HOUSE

Living/Kitchen/Dining	7.21m x 3.52m	23' 8" x 11' 6"
Main Bedroom	3.49m x 3.45m	11' 5" x 11' 4"
Bedroom 2	3.17m x 3.72m	10' 5" x 12' 2"
En-Suite Bathroom	1.68m x 2.28m	5' 6" x 7' 6"
Shower Room	1.98m x 2.28m	6' 5" x 7' 6"
Balcony	1.65m x 3.71m	5' 5" x 12' 2"
<b>Total Internal Area</b>	<b>72 sq m</b>	<b>775 sq ft</b>
<b>Total Internal &amp; External Area</b>	<b>78.1 sq m</b>	<b>840 sq ft</b>

# 2 BED DRAY HOUSE

Living/Kitchen/Dining	7.21m x 4.00m	23' 8" x 13' 1"
Main Bedroom	6.41m x 3.01m	21' 0" x 9' 10"
Bedroom 2	3.39m x 3.40m	11' 1" x 11' 2"
En-Suite Bathroom	1.68m x 2.28m	5' 6" x 7' 6"
Shower Room	1.98m x 2.28m	6' 5" x 7' 6"
Balcony	1.68m x 3.71m	5' 6" x 12' 2"
<b>Total Internal Area</b>	<b>77 sq m</b>	<b>829 sq ft</b>
<b>Total Internal &amp; External Area</b>	<b>83.2 sq m</b>	<b>896 sq ft</b>

Apartments: 205, 305, 405, 505

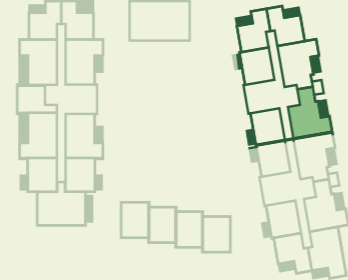
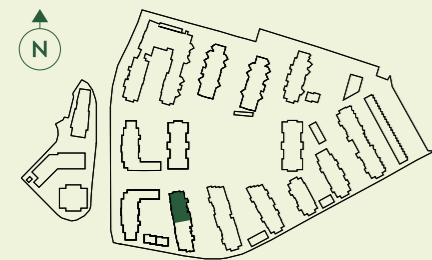
Apartment: 204 



SITE PLAN

APARTMENT LOCATION

LEVEL/PLOT



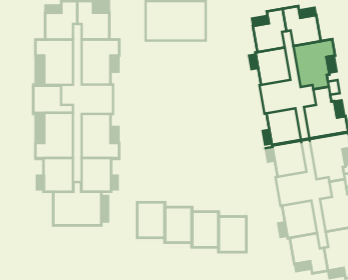
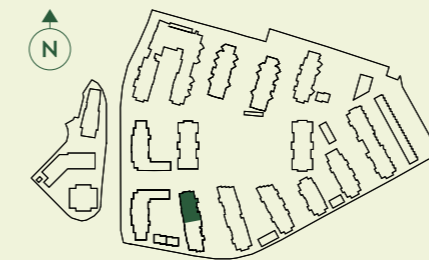
5	505
4	405
3	305
2	205

► Entrance C-Cupboard HIU-Heat Interface Unit MVHR-Mechanical Ventilation with Heat Recovery Utility  
W-Wardrobe WM-Washing Machine DW-Dishwasher FF-Fridge Freezer

SITE PLAN

APARTMENT LOCATION

LEVEL/PLOT

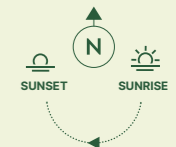


2	204
---	-----

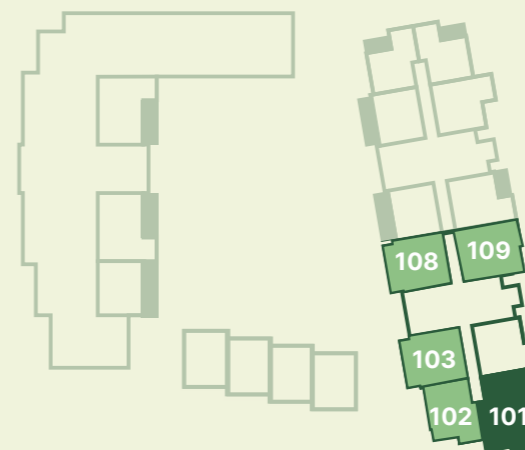
► Entrance C-Cupboard HIU-Heat Interface Unit MVHR-Mechanical Ventilation with Heat Recovery Utility  
W-Wardrobe WM-Washing Machine DW-Dishwasher FF-Fridge Freezer



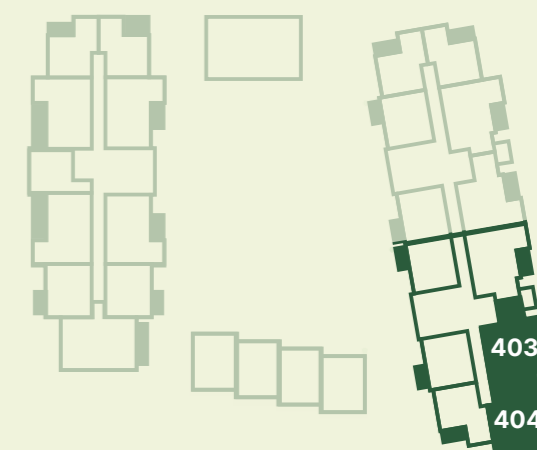
# BURRELL HOUSE



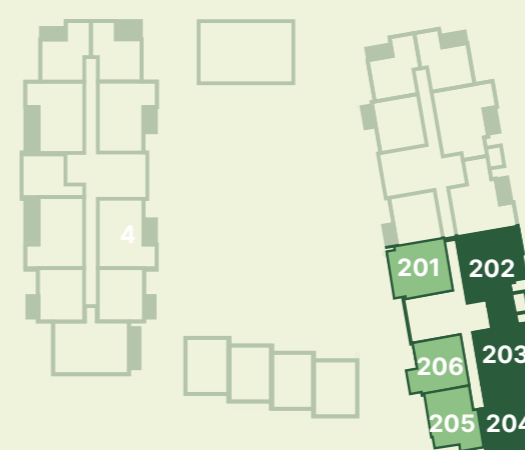
## FIRST FLOOR



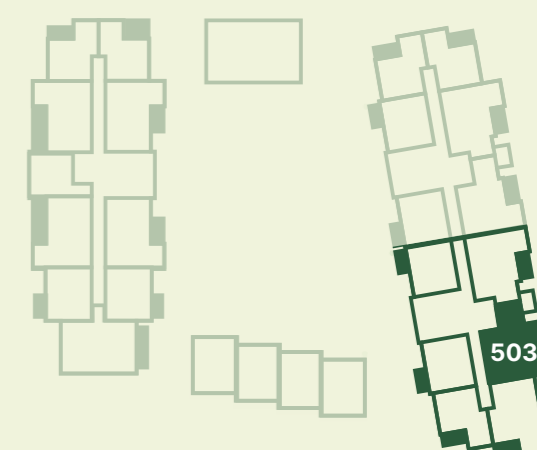
## FOURTH FLOOR



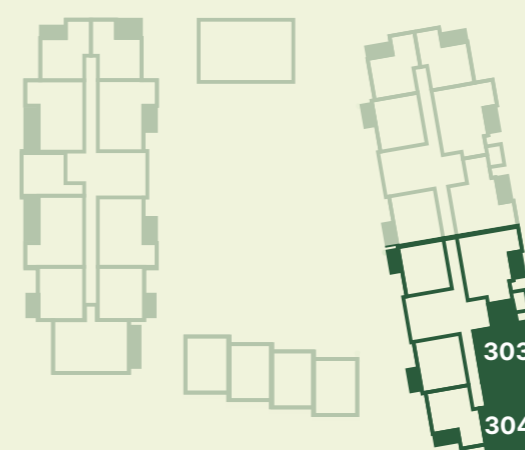
## SECOND FLOOR



## FIFTH FLOOR



## THIRD FLOOR



1 BED APARTMENT

2 BED APARTMENT

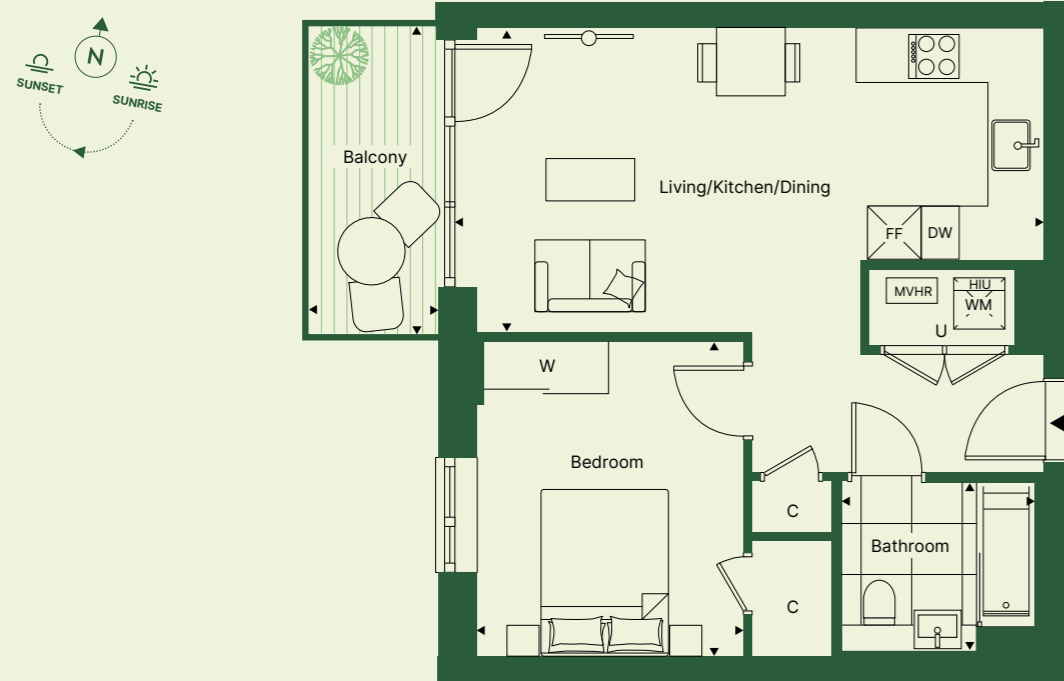
# 1 BED BURRELL HOUSE

Living/Kitchen/Dining	6.95m x 3.60m	22' 9" x 11' 9"
Bedroom	3.18m x 3.75m	10' 5" x 12' 3"
Bathroom	1.98m x 2.28m	6' 5" x 7' 6"
Balcony	1.53m x 3.63m	5' 0" x 11' 11"
<b>Total Internal Area</b>	<b>50.7 sq m</b>	<b>546 sq ft</b>
<b>Total Internal &amp; External Area</b>	<b>56.2 sq m</b>	<b>605 sq ft</b>

# 1 BED BURRELL HOUSE

Living/Kitchen/Dining	7.07m x 3.61m	23' 2" x 11' 10"
Bedroom	3.26m x 3.75m	10' 8" x 12' 3"
Bathroom	1.98m x 2.28m	6' 5" x 7' 6"
Balcony	1.61 x 3.61m	5' 3" x 11' 10"
<b>Total Internal Area</b>	<b>50.7 sq m</b>	<b>546 sq ft</b>
<b>Total Internal &amp; External Area</b>	<b>56.5 sq m</b>	<b>608 sq ft</b>

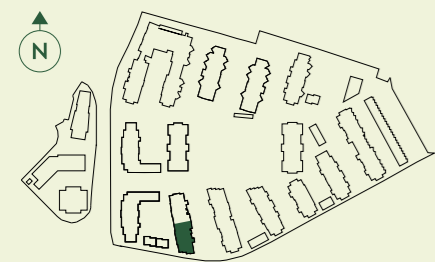
Apartment: 201



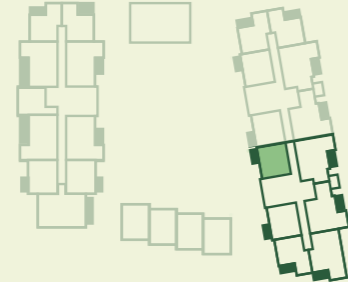
Apartment: 206



SITE PLAN



APARTMENT LOCATION



LEVEL/PLOT

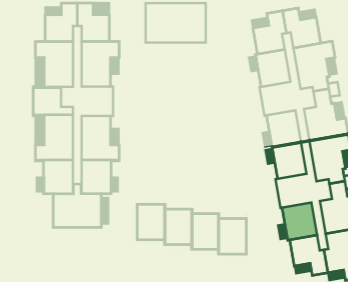
2 201

► Entrance C-Cupboard HIU-Heat Interface Unit MVHR-Mechanical Ventilation with Heat Recovery Utility  
W-Wardrobe WM-Washing Machine DW-Dishwasher FF-Fridge Freezer

SITE PLAN



APARTMENT LOCATION



LEVEL/PLOT

2 206

► Entrance C-Cupboard HIU-Heat Interface Unit MVHR-Mechanical Ventilation with Heat Recovery Utility  
W-Wardrobe WM-Washing Machine DW-Dishwasher FF-Fridge Freezer

# 1 BED

## BURRELL HOUSE

Living/Kitchen/Dining	3.73m x 6.11m	12' 2" x 20' 0"
Bedroom	3.43m x 3.40m	11' 3" x 11' 2"
Bathroom	1.68m x 2.28m	5' 6" x 7' 6"
Balcony	3.57m x 1.68m	11' 8" x 5' 6"
<b>Total Internal Area</b>	<b>51.2 sq m</b>	<b>551 sq ft</b>
<b>Total Internal &amp; External Area</b>	<b>57.1 sq m</b>	<b>614 sq ft</b>

# 1 BED

## BURRELL HOUSE

Living/Kitchen/Dining	6.95m x 3.60m	22' 9" x 11' 9"
Bedroom	3.18m x 3.75m	10' 5" x 12' 3"
Bathroom	1.98m x 2.28m	6' 5" x 7' 6"
Terrace	1.98m x 6.99m	6' 6" x 22' 11"
<b>Total Internal Area</b>	<b>51 sq m</b>	<b>549 sq ft</b>
<b>Total Internal &amp; External Area</b>	<b>64.8 sq m</b>	<b>698 sq ft</b>

Apartments: 102, 205



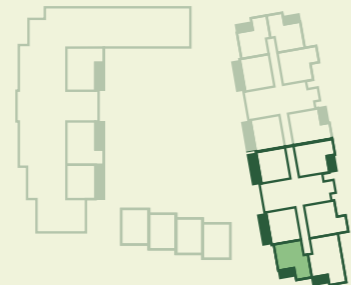
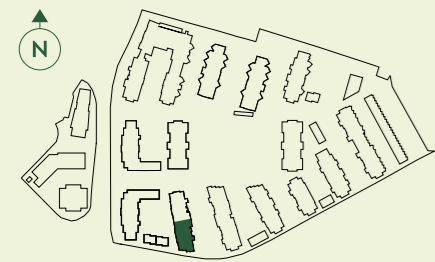
Apartment: 108



SITE PLAN

APARTMENT LOCATION

LEVEL/PLOT

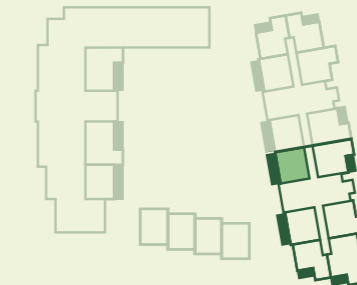
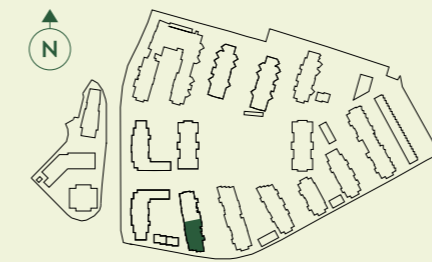


2	205
1	102

SITE PLAN

APARTMENT LOCATION

LEVEL/PLOT



1	108
---	-----

► Entrance C-Cupboard HIU-Heat Interface Unit MVHR-Mechanical Ventilation with Heat Recovery Utility  
W-Wardrobe WM-Washing Machine DW-Dishwasher FF-Fridge Freezer

► Entrance C-Cupboard HIU-Heat Interface Unit MVHR-Mechanical Ventilation with Heat Recovery Utility  
W-Wardrobe WM-Washing Machine DW-Dishwasher FF-Fridge Freezer

# 1 BED

## BURRELL HOUSE

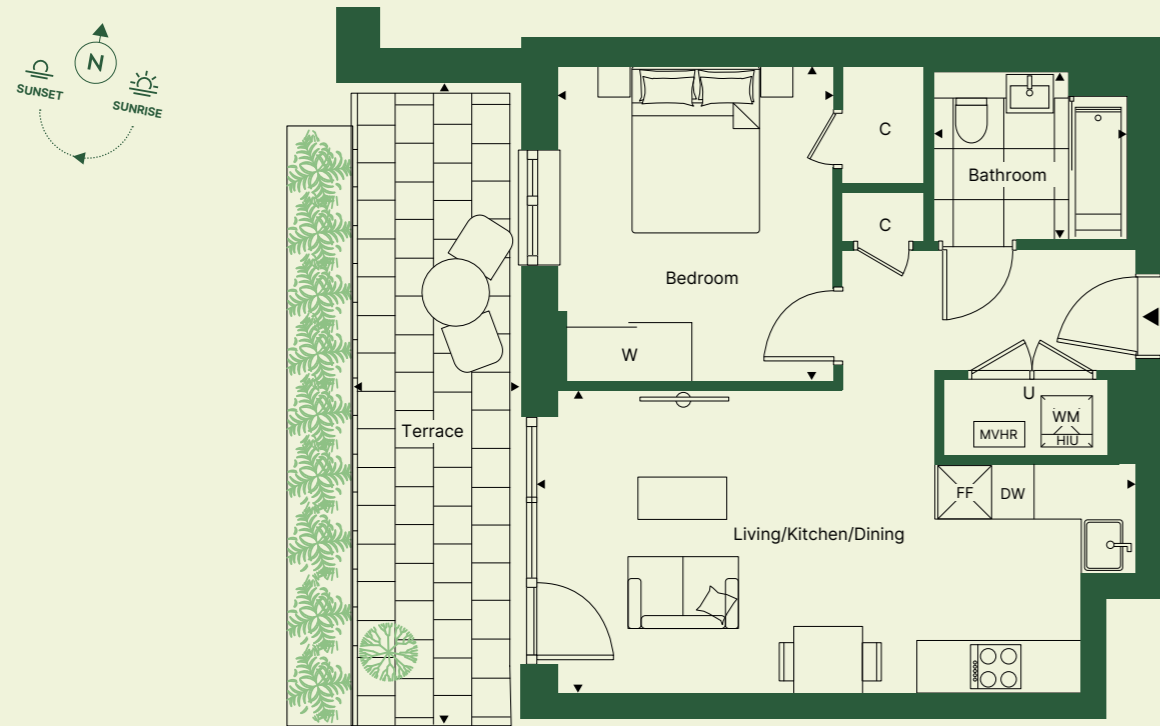
Living/Kitchen/Dining	7.07m x 3.61m	23' 2" x 11' 10"
Bedroom	3.26m x 3.75m	10' 8" x 12' 3"
Bathroom	1.98m x 2.28m	6' 5" x 7' 6"
Terrace	1.99m x 7.10m	6' 6" x 23' 3"
<b>Total Internal Area</b>	<b>50.7 sq m</b>	<b>546 sq ft</b>
<b>Total Internal &amp; External Area</b>	<b>64.8 sq m</b>	<b>697 sq ft</b>

# 1 BED

## BURRELL HOUSE

Living/Kitchen/Dining	7.82m x 3.95m	25' 7" x 12' 11"
Bedroom	3.59m x 3.40m	11' 9" x 11' 2"
Bathroom	1.98m x 2.28m	6' 5" x 7' 6"
Balcony	1.68m x 3.70m	5' 6" x 12' 2"
<b>Total Internal Area</b>	<b>60 sq m</b>	<b>646 sq ft</b>
<b>Total Internal &amp; External Area</b>	<b>66.2 sq m</b>	<b>712 sq ft</b>

Apartment: 103



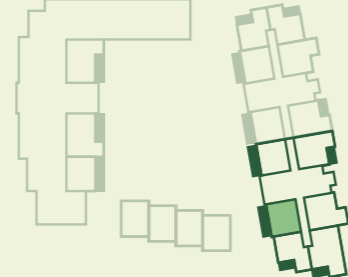
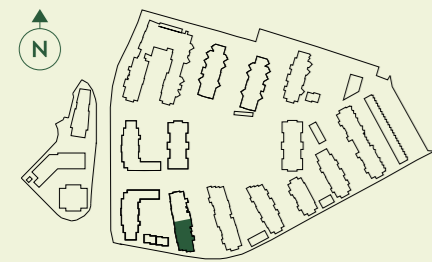
Apartment: 109



SITE PLAN

APARTMENT LOCATION

LEVEL/PLOT

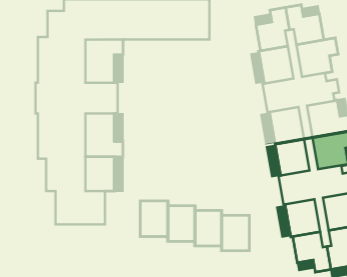
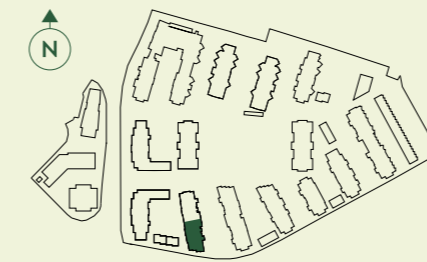


1 103

SITE PLAN

APARTMENT LOCATION

LEVEL/PLOT



1 109

► Entrance C-Cupboard HIU-Heat Interface Unit MVHR-Mechanical Ventilation with Heat Recovery Utility  
W-Wardrobe WM-Washing Machine DW-Dishwasher FF-Fridge Freezer

► Entrance C-Cupboard HIU-Heat Interface Unit MVHR-Mechanical Ventilation with Heat Recovery Utility  
W-Wardrobe WM-Washing Machine DW-Dishwasher FF-Fridge Freezer

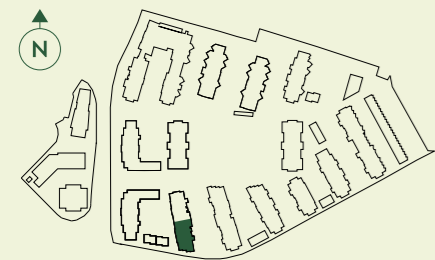
# 2 BED BURRELL HOUSE

Living/Kitchen/Dining	7.21m x 3.45m	23' 8" x 11' 4"
Main Bedroom	3.49m x 3.52m	11' 5" x 11' 6"
Bedroom 2	3.17m x 3.72m	10' 5" x 12' 2"
En-Suite Bathroom	1.68m x 2.28m	5' 6" x 7' 6"
Shower Room	1.98m x 2.28m	6' 5" x 7' 6"
Balcony	1.68m x 3.71m	5' 6" x 12' 2"
<b>Total Internal Area</b>	<b>71.8 sq m</b>	<b>773 sq ft</b>
<b>Total Internal &amp; External Area</b>	<b>78 sq m</b>	<b>839 sq ft</b>

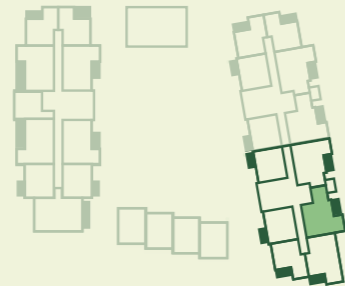
Apartments: 203, 303, 403, 503



SITE PLAN



APARTMENT LOCATION



LEVEL/PLOT

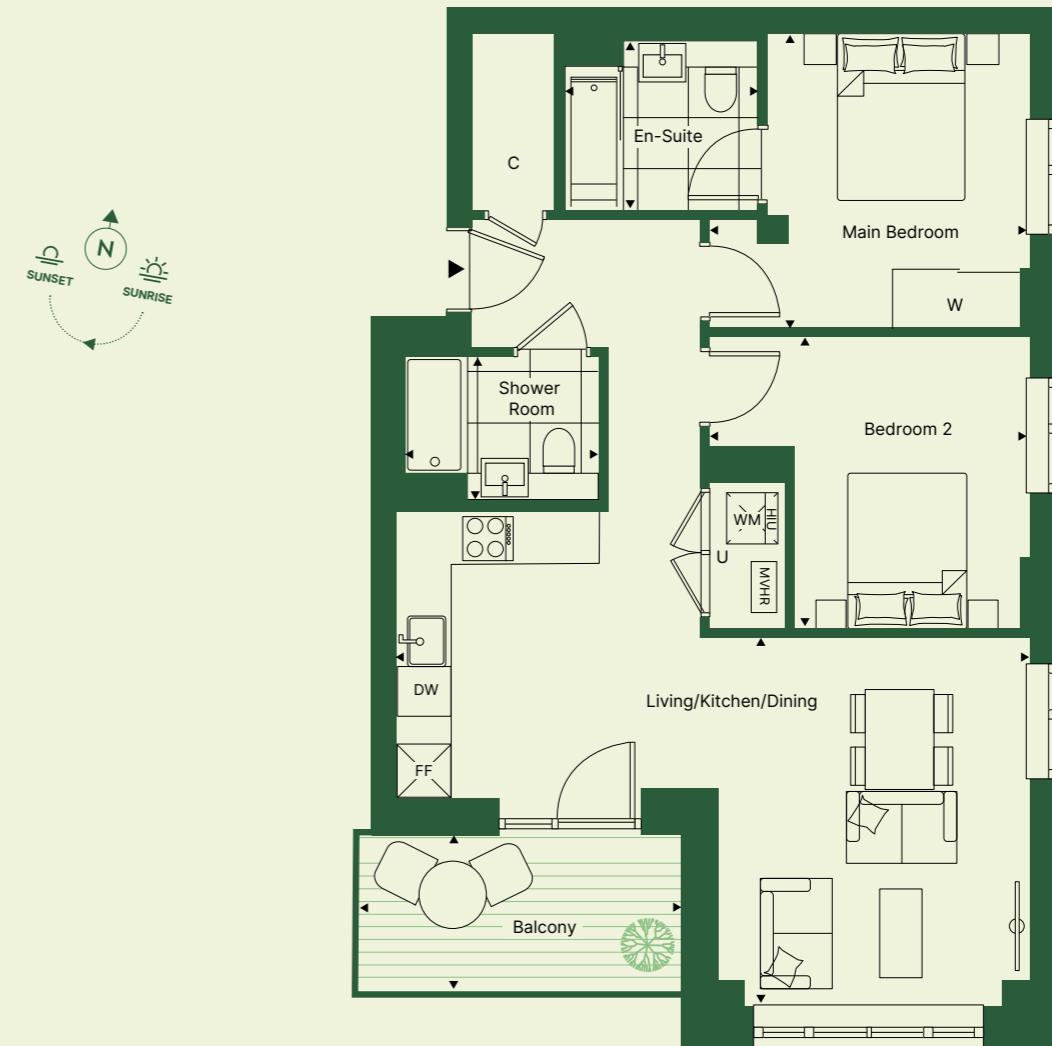
5	503
4	403
3	303
2	203

► Entrance C-Cupboard HIU-Heat Interface Unit MVHR-Mechanical Ventilation with Heat Recovery Utility  
W-Wardrobe WM-Washing Machine DW-Dishwasher FF-Fridge Freezer

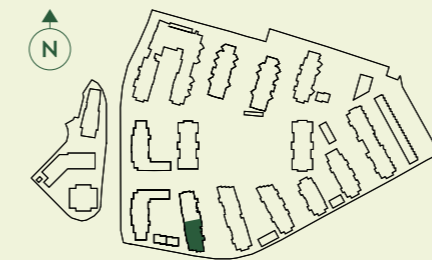
# 2 BED BURRELL HOUSE

Living/Kitchen/Dining	7.47m x 4.38m	24' 6" x 14' 4"
Main Bedroom	3.77m x 3.49m	12' 4" x 11' 5"
Bedroom 2	3.77m x 3.44m	12' 4" x 11' 3"
En-Suite Bathroom	1.68m x 2.28m	5' 6" x 7' 6"
Shower Room	1.98m x 2.28m	6' 5" x 7' 6"
Balcony	3.67m x 1.68m	12' 0" x 5' 6"
<b>Total Internal Area</b>	<b>73.2 sq m</b>	<b>788 sq ft</b>
<b>Total Internal &amp; External Area</b>	<b>79.3 sq</b>	<b>853 sq ft</b>

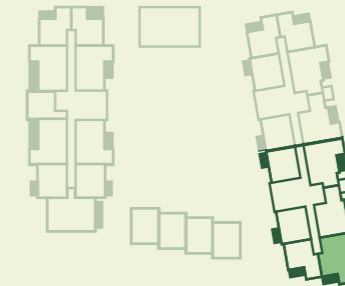
Apartments: 101, 204, 304, 404



SITE PLAN



APARTMENT LOCATION




LEVEL/PLOT

4	404
3	304
2	204
1	101

► Entrance C-Cupboard HIU-Heat Interface Unit MVHR-Mechanical Ventilation with Heat Recovery Utility  
W-Wardrobe WM-Washing Machine DW-Dishwasher FF-Fridge Freezer

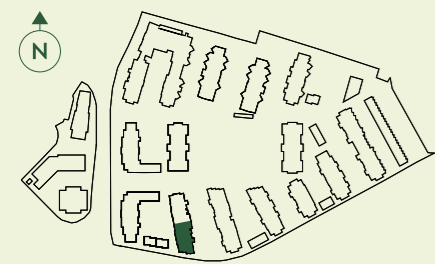
# 2 BED BURRELL HOUSE

Living/Kitchen/Dining	7.21m x 4.00m	24' 6" x 14' 4"
Main Bedroom	6.43m x 3.01m	12' 4" x 11' 5"
Bedroom 2	3.38m x 3.40m	12' 4" x 11' 3"
En-Suite Bathroom	1.68m x 2.28m	5' 6" x 7' 6"
Shower Room	1.98m x 2.28m	6' 5" x 7' 6"
Balcony	1.68m x 3.71m	5' 6" x 12' 2"
<b>Total Internal Area</b>	<b>76.9 sq m</b>	<b>828 sq ft</b>
<b>Total Internal &amp; External Area</b>	<b>83.1 sq m</b>	<b>894 sq ft</b>

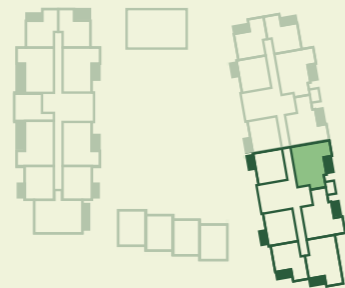
Apartment: 202 



SITE PLAN



APARTMENT LOCATION



LEVEL/PLOT

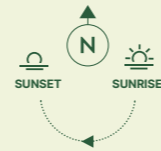
2 202

► Entrance C-Cupboard HIU-Heat Interface Unit MVHR-Mechanical Ventilation with Heat Recovery Utility  
W-Wardrobe WM-Washing Machine DW-Dishwasher FF-Fridge Freezer

# HOPPER HOUSE



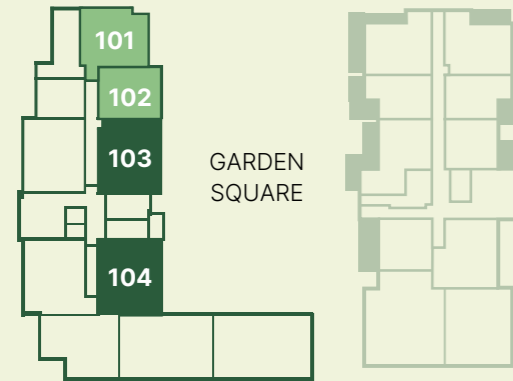
Computer generated image is indicative only



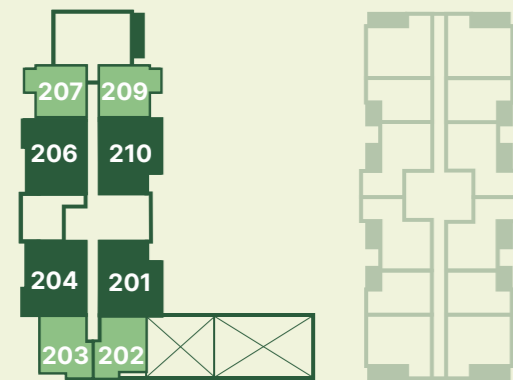
# 1 BED HOPPER HOUSE

Living/Kitchen/Dining	6.95m x 3.60m	22' 9" x 11' 9"
Bedroom	3.18m x 3.75m	10' 5" x 12' 3"
Bathroom	1.98m x 2.28m	6' 5" x 7' 6"
Balcony	1.53m x 3.63m	5' 0" x 11' 11"
<b>Total Internal Area</b>	<b>50.7 sq m</b>	<b>546 sq ft</b>
<b>Total Internal &amp; External Area</b>	<b>56.2 sq m</b>	<b>605 sq ft</b>

## FIRST FLOOR



## SECOND FLOOR



## THIRD FLOOR



## FOURTH FLOOR



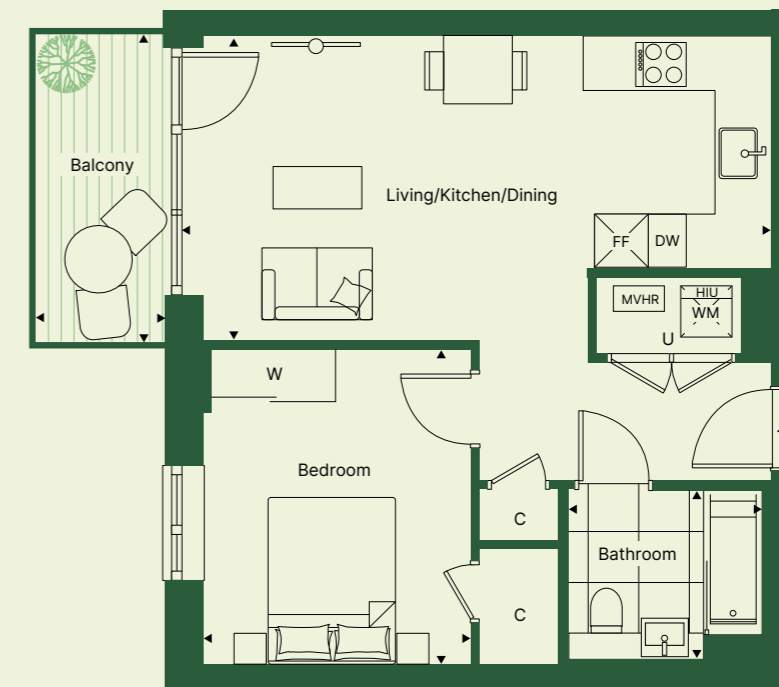
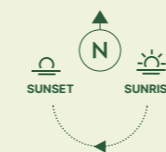
## EIGHTH FLOOR



■ 1 BED APARTMENT

■ 2 BED APARTMENT

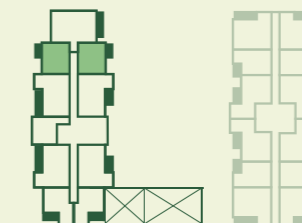
Apartments: 207, 209\*, 307, 309\*



## SITE PLAN



## APARTMENT LOCATION



## LEVEL/PLOT

3	307, 309*
2	207, 209*

\*Handed to floorplan shown ▶ Entrance C-Cupboard HIU-Heat Interface Unit MVHR-Mechanical Ventilation with Heat Recovery Utility  
W-Wardrobe WM-Washing Machine DW-Dishwasher FF-Fridge Freezer

# 1 BED HOPPER HOUSE

Living/Kitchen/Dining	3.72m x 6.10m	12' 2" x 20' 0"
Bedroom	3.43m x 3.27m	11' 3" x 10' 9"
Bathroom	1.98m x 2.28m	6' 5" x 7' 6"
Balcony	3.67m x 1.68m	12' 0" x 5' 6"
<b>Total Internal Area</b>	<b>50.5 sq m</b>	<b>544 sq ft</b>
<b>Total Internal &amp; External Area</b>	<b>56.6 sq m</b>	<b>609 sq ft</b>

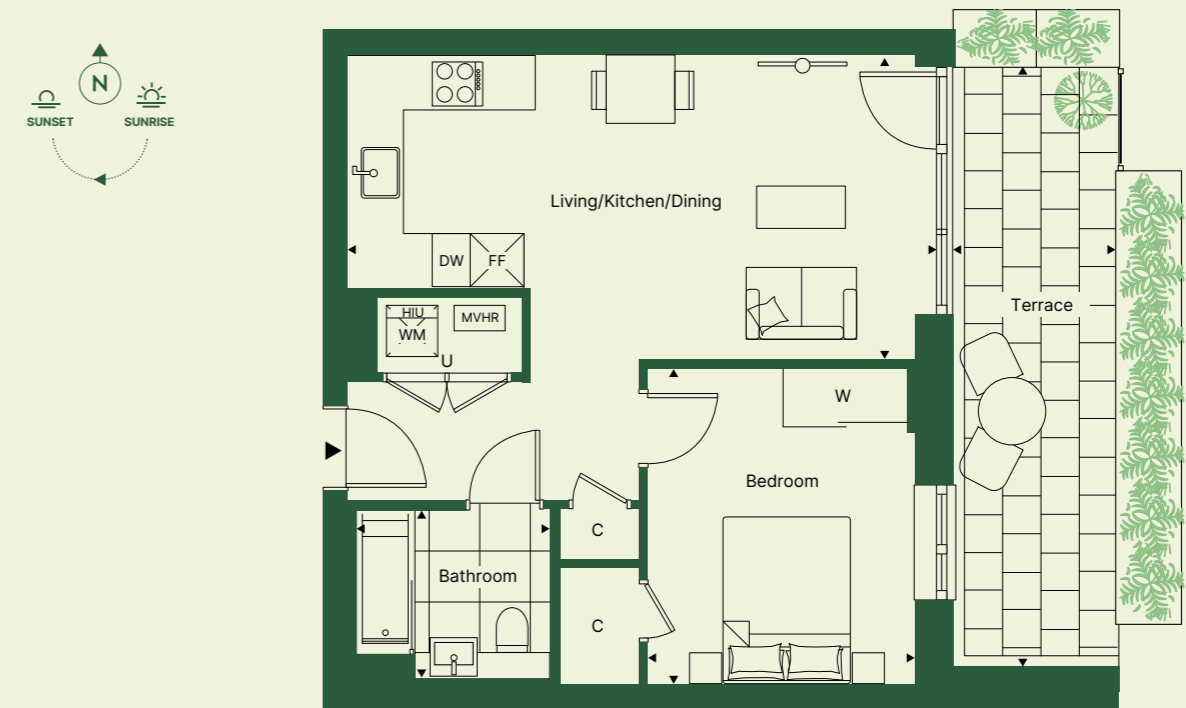
# 1 BED HOPPER HOUSE

Living/Kitchen/Dining	6.95m x 3.60m	22' 9" x 11' 9"
Bedroom	3.18m x 3.75m	10' 5" x 12' 3"
Bathroom	1.98m x 2.28m	6' 5" x 7' 6"
Terrace	1.91m x 7.12m	6' 3" x 23' 4"
<b>Total Internal Area</b>	<b>50.6 sq m</b>	<b>545 sq ft</b>
<b>Total Internal &amp; External Area</b>	<b>56.1 sq m</b>	<b>604 sq ft</b>

Apartments: 202, 203\*



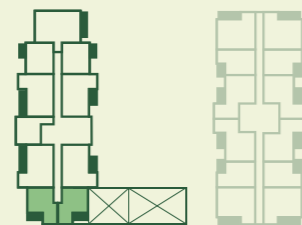
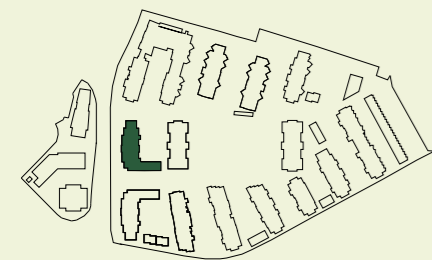
Apartment: 102



SITE PLAN

APARTMENT LOCATION

LEVEL/PLOT

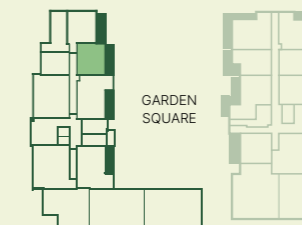


2 202, 203\*

SITE PLAN

APARTMENT LOCATION

LEVEL/PLOT



1 102

\*Handed to floorplan shown ▶ Entrance C-Cupboard HIU-Heat Interface Unit MVHR-Mechanical Ventilation with Heat Recovery Utility  
W-Wardrobe WM-Washing Machine DW-Dishwasher FF-Fridge Freezer

▶ Entrance C-Cupboard HIU-Heat Interface Unit MVHR-Mechanical Ventilation with Heat Recovery Utility  
W-Wardrobe WM-Washing Machine DW-Dishwasher FF-Fridge Freezer

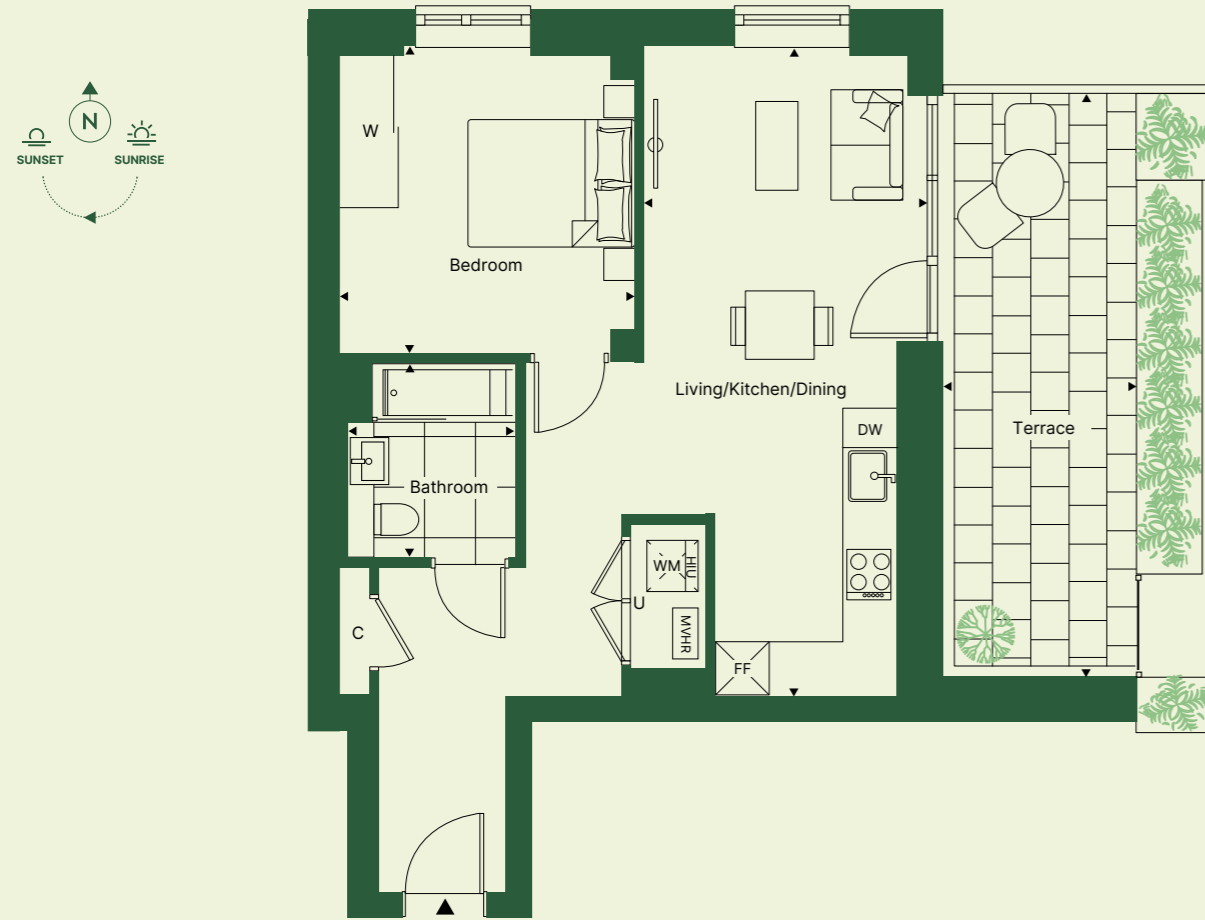
# 1 BED HOPPER HOUSE

Living/Kitchen/Dining	3.35m x 7.68m	11' 0" x 25' 2"
Bedroom	3.48m x 3.63m	11' 5" x 11' 11"
Bathroom	1.68m x 2.28m	5' 6" x 7' 6"
Balcony	2.30m x 6.88m	7' 6" x 22' 7"
<b>Total Internal Area</b>	<b>54.9 sq m</b>	<b>591 sq ft</b>
<b>Total Internal &amp; External Area</b>	<b>70.7sq m</b>	<b>760 sq ft</b>

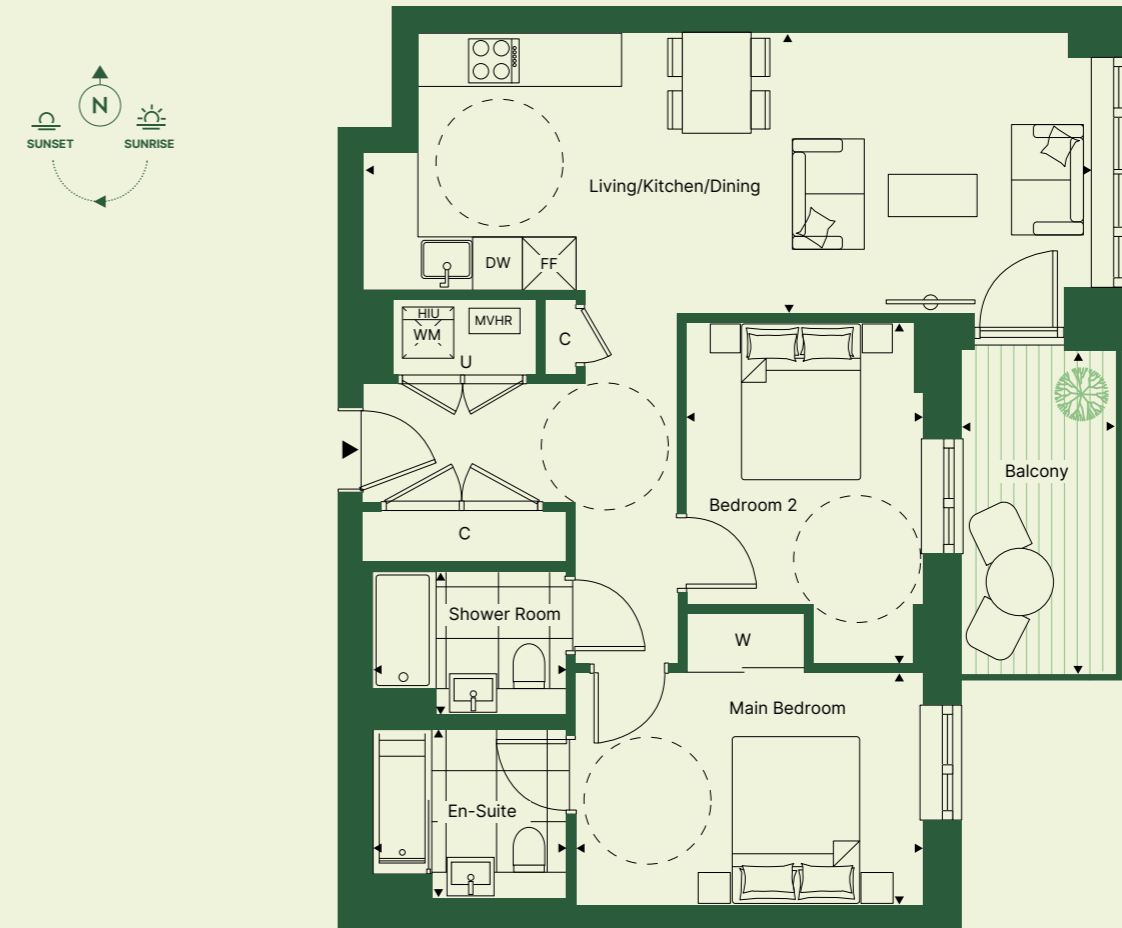
# 2 BED HOPPER HOUSE

Living/Kitchen/Dining	8.62m x 3.34m	28' 3" x 10' 11"
Main Bedroom	4.10m x 2.75m	13' 5" x 9' 0"
Bedroom 2	2.80m x 4.04m	9' 2" x 13' 3"
En-Suite Bathroom	1.68m x 2.28m	5' 6" x 7' 6"
Shower Room	1.98m x 2.28m	6' 5" x 7' 6"
Balcony	1.83m x 3.81m	6' 0" x 12' 6"
<b>Total Internal Area</b>	<b>73.9 sq m</b>	<b>795 sq ft</b>
<b>Total Internal &amp; External Area</b>	<b>86.4 sq m</b>	<b>929 sq ft</b>

Apartment: 101



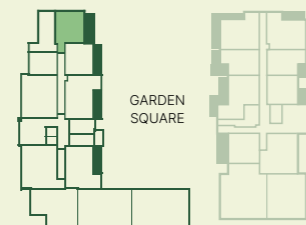
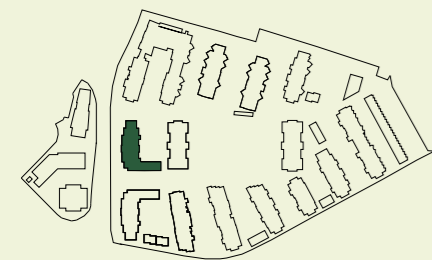
Apartments: 210, 310, 410



SITE PLAN

APARTMENT LOCATION

LEVEL/PLOT

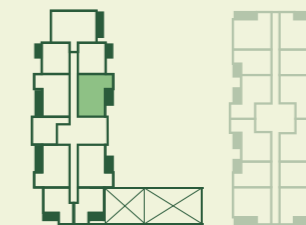
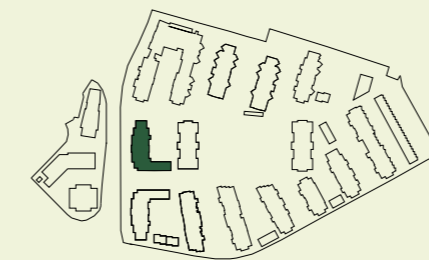


1	101
---	-----

SITE PLAN

APARTMENT LOCATION

LEVEL/PLOT



4	410
3	310
2	210

► Entrance C-Cupboard HIU-Heat Interface Unit MVHR-Mechanical Ventilation with Heat Recovery Utility  
W-Wardrobe WM-Washing Machine DW-Dishwasher FF-Fridge Freezer

► Entrance C-Cupboard HIU-Heat Interface Unit MVHR-Mechanical Ventilation with Heat Recovery Utility  
W-Wardrobe WM-Washing Machine DW-Dishwasher FF-Fridge Freezer

# 2 BED HOPPER HOUSE

Living/Kitchen/Dining	7.29m x 3.34m	23' 11" x 10' 11"
Main Bedroom	4.10m x 2.75m	13' 5" x 9' 0"
Bedroom 2	2.80m x 4.04m	9' 2" x 13' 3"
En-Suite Bathroom	1.68m x 2.28m	5' 6" x 7' 6"
Shower Room	1.98m x 2.28m	6' 5" x 7' 6"
Balcony	1.53m x 10.06m	5' 0" x 33' 0"
<b>Total Internal Area</b>	<b>69.1 sq m</b>	<b>744 sq ft</b>
<b>Total Internal &amp; External Area</b>	<b>82.7 sq m</b>	<b>890 sq ft</b>

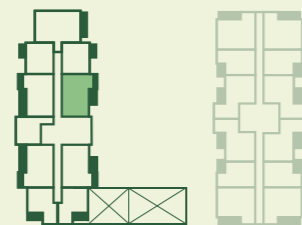
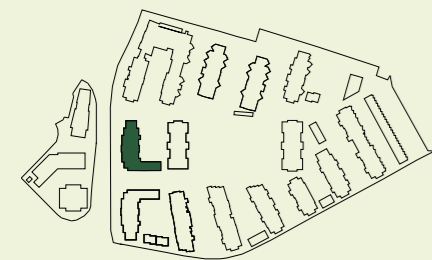
Apartment: 810



SITE PLAN

APARTMENT LOCATION

LEVEL/PLOT



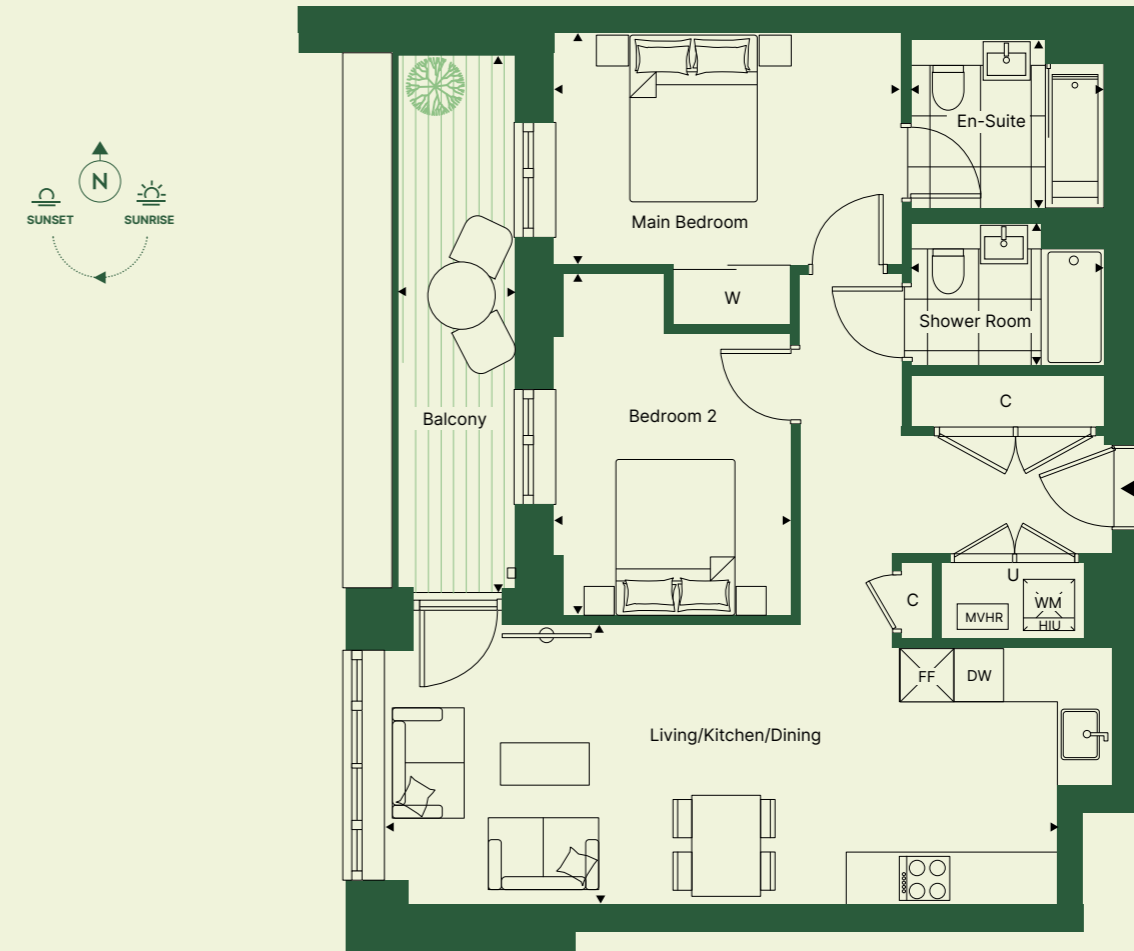
8 810

► Entrance C-Cupboard HIU-Heat Interface Unit MVHR-Mechanical Ventilation with Heat Recovery Utility  
W-Wardrobe WM-Washing Machine DW-Dishwasher FF-Fridge Freezer

# 2 BED HOPPER HOUSE

Living/Kitchen/Dining	8.63m x 3.34m	28' 3" x 10' 11"
Main Bedroom	4.10m x 2.75m	13' 5" x 9' 0"
Bedroom 2	2.80m x 4.04m	9' 2" x 13' 3"
En-Suite Bathroom	1.68m x 2.28m	5' 6" x 7' 6"
Shower Room	1.98m x 2.28m	6' 5" x 7' 6"
Balcony	1.42m x 6.32m	4' 8" x 20' 9"
<b>Total Internal Area</b>	<b>73.9 sq m</b>	<b>795 sq ft</b>
<b>Total Internal &amp; External Area</b>	<b>82.8 sq m</b>	<b>890 sq ft</b>

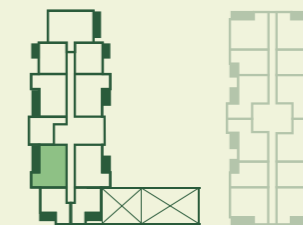
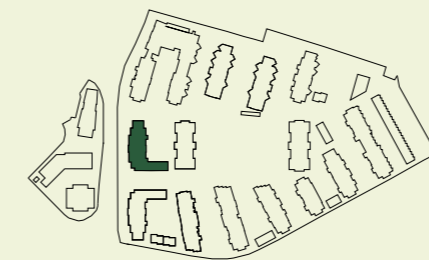
Apartments: 204, 304, 404



SITE PLAN

APARTMENT LOCATION

LEVEL/PLOT



4 404

3 304

2 204

► Entrance C-Cupboard HIU-Heat Interface Unit MVHR-Mechanical Ventilation with Heat Recovery Utility  
W-Wardrobe WM-Washing Machine DW-Dishwasher FF-Fridge Freezer

# 2 BED HOPPER HOUSE

Living/Kitchen/Dining	7.29m x 3.34m	23' 11" x 10' 11"
Main Bedroom	4.10m x 2.75m	13' 5" x 9' 0"
Bedroom 2	2.80m x 4.04m	9' 2" x 13' 3"
En-Suite Bathroom	1.68m x 2.28m	5' 6" x 7' 6"
Shower Room	1.98m x 2.28m	6' 5" x 7' 6"
Balcony	1.82m x 7.44m	6' 0" x 24' 5"

<b>Total Internal Area</b>	<b>70 sq m</b>	<b>753 sq ft</b>
<b>Total Internal &amp; External Area</b>	<b>83.5 sq m</b>	<b>899 sq ft</b>

# 2 BED HOPPER HOUSE

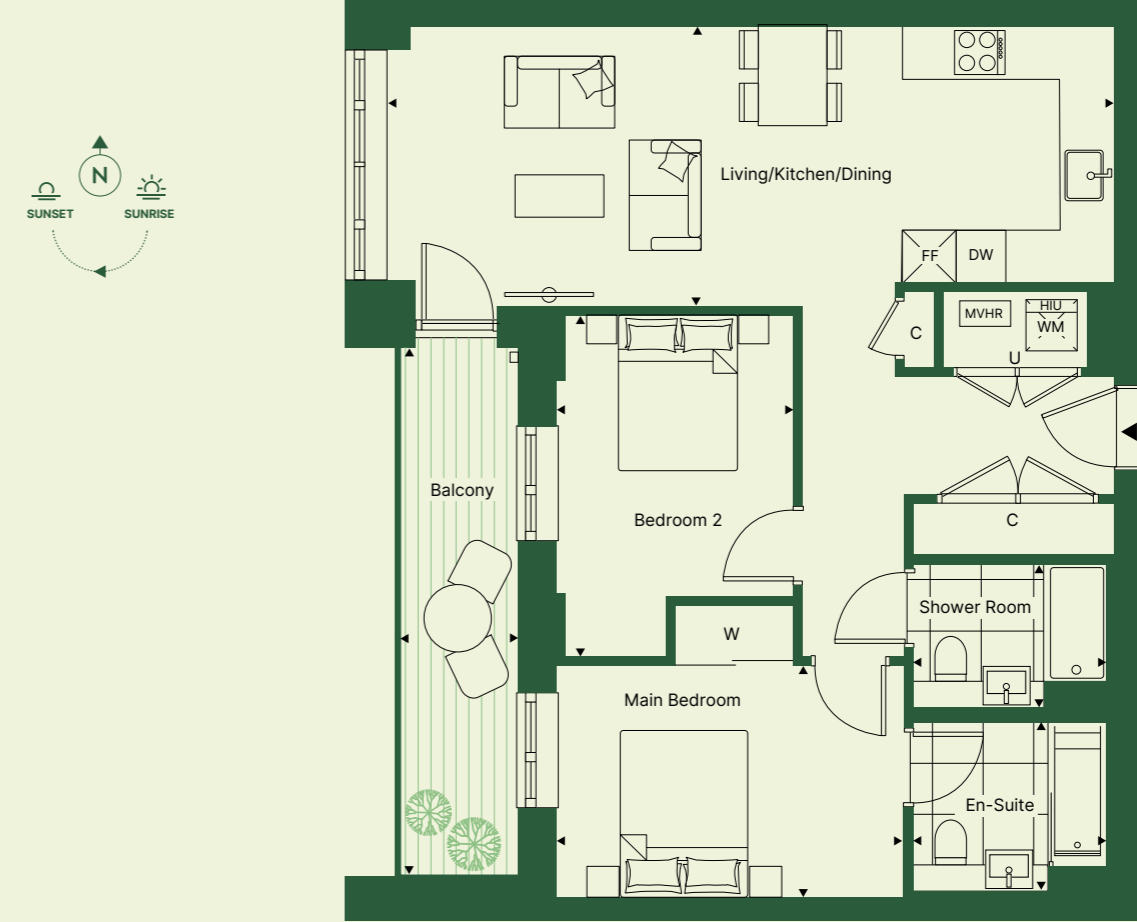
Living/Kitchen/Dining	8.63m x 3.34m	28' 3" x 10' 11"
Main Bedroom	4.10m x 2.75m	13' 5" x 9' 0"
Bedroom 2	2.80m x 4.04m	9' 2" x 13' 3"
En-Suite Bathroom	1.68m x 2.28m	5' 6" x 7' 6"
Shower Room	1.98m x 2.28m	6' 5" x 7' 6"
Balcony	1.42m x 6.32m	4' 8" x 20' 9"

<b>Total Internal Area</b>	<b>74.9 sq m</b>	<b>806 sq ft</b>
<b>Total Internal &amp; External Area</b>	<b>83.8 sq m</b>	<b>901 sq ft</b>

Apartment: 801



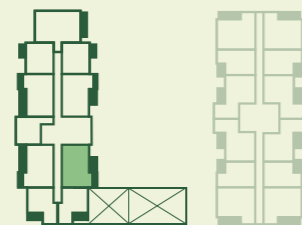
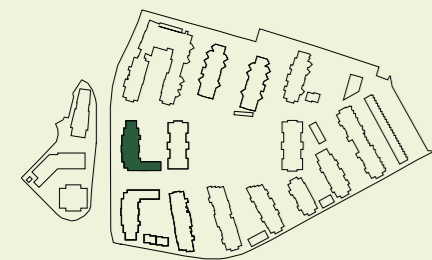
Apartments: 206, 306, 406



SITE PLAN

APARTMENT LOCATION

LEVEL/PLOT

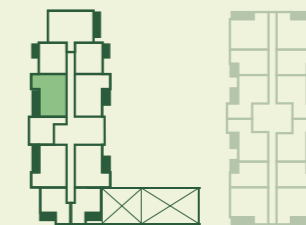
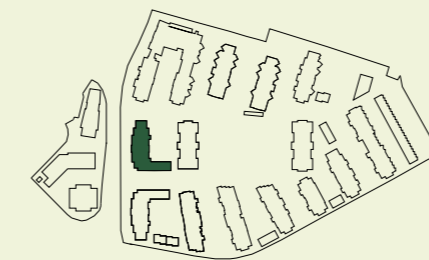


8 801

SITE PLAN

APARTMENT LOCATION

LEVEL/PLOT



4 406  
3 306  
2 206

► Entrance C-Cupboard HIU-Heat Interface Unit MVHR-Mechanical Ventilation with Heat Recovery Utility  
W-Wardrobe WM-Washing Machine DW-Dishwasher FF-Fridge Freezer

► Entrance C-Cupboard HIU-Heat Interface Unit MVHR-Mechanical Ventilation with Heat Recovery Utility  
W-Wardrobe WM-Washing Machine DW-Dishwasher FF-Fridge Freezer

# 2 BED HOPPER HOUSE

Living/Kitchen/Dining	7.29m x 3.34m	23' 11" x 10' 11"
Main Bedroom	4.10m x 2.75m	13' 5" x 9' 0"
Bedroom 2	2.80m x 4.04m	9' 2" x 13' 3"
En-Suite Bathroom	1.68m x 2.28m	5' 6" x 7' 6"
Shower Room	1.98m x 2.28m	6' 5" x 7' 6"
Balcony	1.53m x 10.06m	5' 0" x 33' 0"

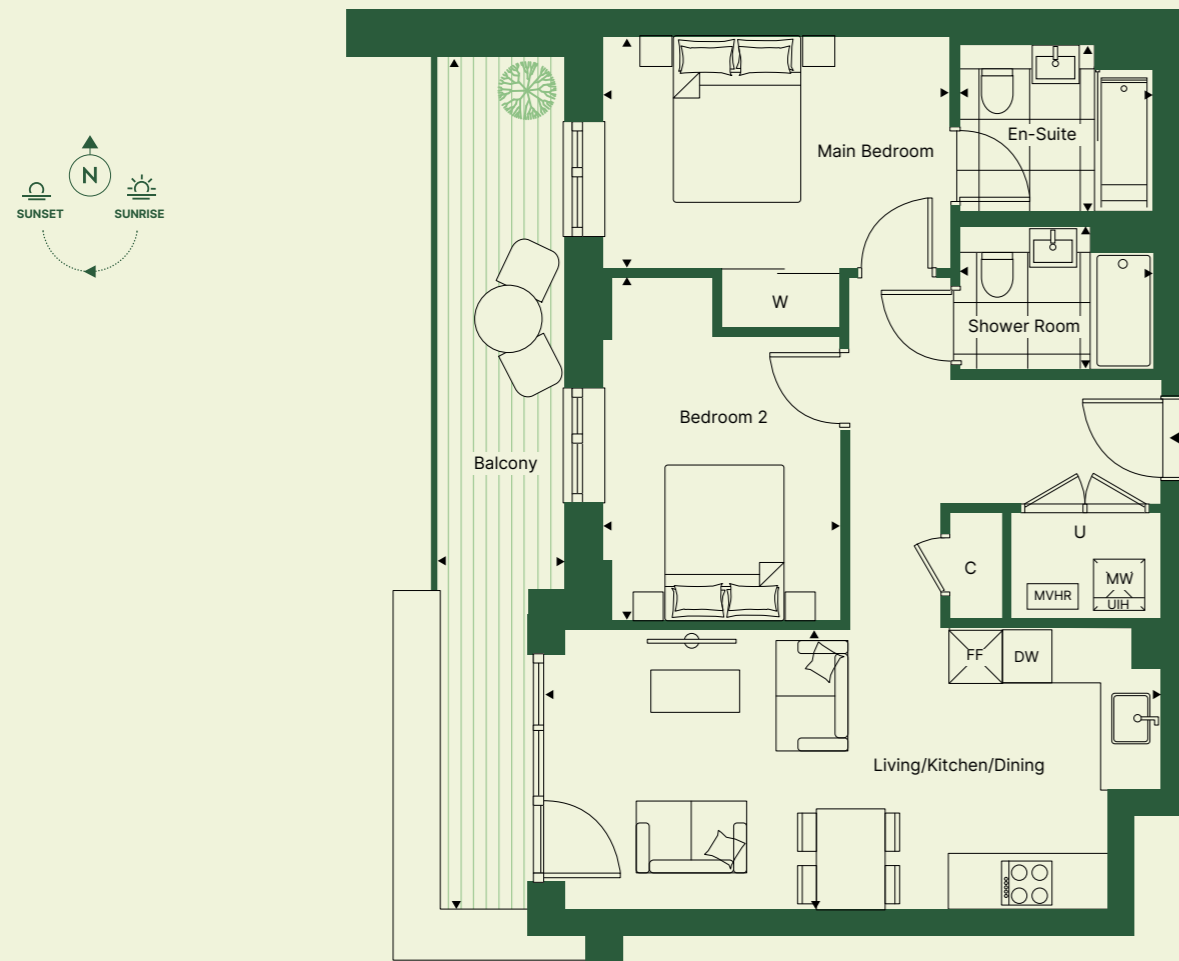
<b>Total Internal Area</b>	<b>69.1 sq m</b>	<b>744 sq ft</b>
<b>Total Internal &amp; External Area</b>	<b>84.5 sq m</b>	<b>909 sq ft</b>

# 2 BED HOPPER HOUSE

Living/Kitchen/Dining	7.29m x 3.34m	23' 11" x 10' 11"
Main Bedroom	4.10m x 2.75m	13' 5" x 9' 0"
Bedroom 2	2.80m x 4.04m	9' 2" x 13' 3"
En-Suite Bathroom	1.98m x 2.28m	6' 5" x 7' 6"
Shower Room	1.68m x 2.28m	5' 6" x 7' 6"
Balcony	1.53m x 10.06m	5' 0" x 33' 0"

<b>Total Internal Area</b>	<b>70 sq m</b>	<b>753 sq ft</b>
<b>Total Internal &amp; External Area</b>	<b>85.3 sq m</b>	<b>917 sq ft</b>

Apartment: 804



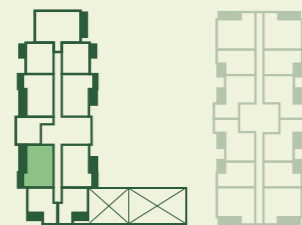
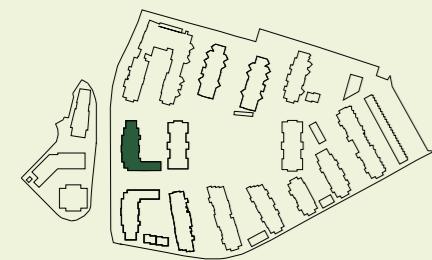
Apartment: 806



SITE PLAN

APARTMENT LOCATION

LEVEL/PLOT

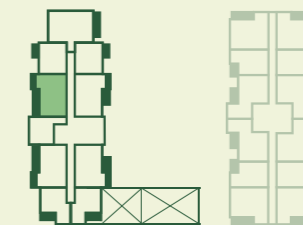
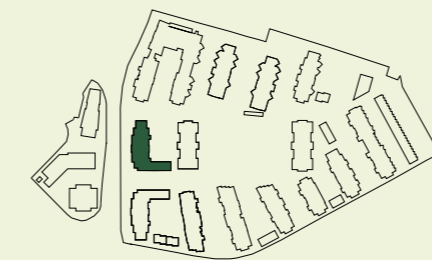


8 804

SITE PLAN

APARTMENT LOCATION

LEVEL/PLOT



8 806

► Entrance C-Cupboard HIU-Heat Interface Unit MVHR-Mechanical Ventilation with Heat Recovery Utility  
W-Wardrobe WM-Washing Machine DW-Dishwasher FF-Fridge Freezer


► Entrance C-Cupboard HIU-Heat Interface Unit MVHR-Mechanical Ventilation with Heat Recovery Utility  
W-Wardrobe WM-Washing Machine DW-Dishwasher FF-Fridge Freezer

# 2 BED HOPPER HOUSE

Living/Kitchen/Dining	8.62m x 3.34m	28' 3" x 10' 11"
Main Bedroom	4.10m x 2.75m	13' 5" x 9' 0"
Bedroom 2	2.80m x 4.04m	9' 2" x 13' 3"
En-Suite Bathroom	1.68m x 2.28m	5' 6" x 7' 6"
Shower Room	1.98m x 2.28m	6' 5" x 7' 6"
Terrace	2.02m x 6.19m	6' 7" x 20' 4"
<b>Total Internal Area</b>	<b>93.9 sq m</b>	<b>795 sq ft</b>
<b>Total Internal &amp; External Area</b>	<b>86.4 sq m</b>	<b>929 sq ft</b>

# 2 BED HOPPER HOUSE

Living/Kitchen/Dining	8.62m x 3.34m	28' 3" x 10' 11"
Main Bedroom	4.10m x 2.75m	13' 5" x 9' 0"
Bedroom 2	2.80m x 4.04m	9' 2" x 13' 3"
En-Suite Bathroom	1.68m x 2.28m	5' 6" x 7' 6"
Shower Room	1.98m x 2.28m	6' 5" x 7' 6"
Terrace	2.01m x 5.63m	6' 7" x 18' 5"
<b>Total Internal Area</b>	<b>74.9 sq m</b>	<b>806 sq ft</b>
<b>Total Internal &amp; External Area</b>	<b>86.2 sq m</b>	<b>928 sq ft</b>

Apartment: 103 



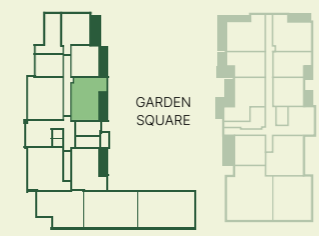
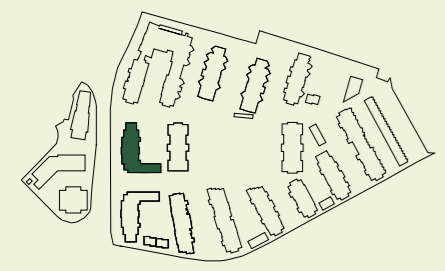
Apartment: 104



SITE PLAN

APARTMENT LOCATION

LEVEL/PLOT

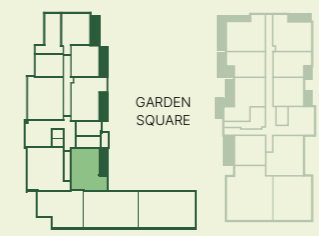
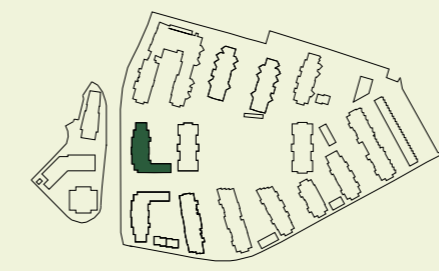


1 103

SITE PLAN

APARTMENT LOCATION

LEVEL/PLOT



1 104

► Entrance C-Cupboard HIU-Heat Interface Unit MVHR-Mechanical Ventilation with Heat Recovery Utility  
W-Wardrobe WM-Washing Machine DW-Dishwasher FF-Fridge Freezer

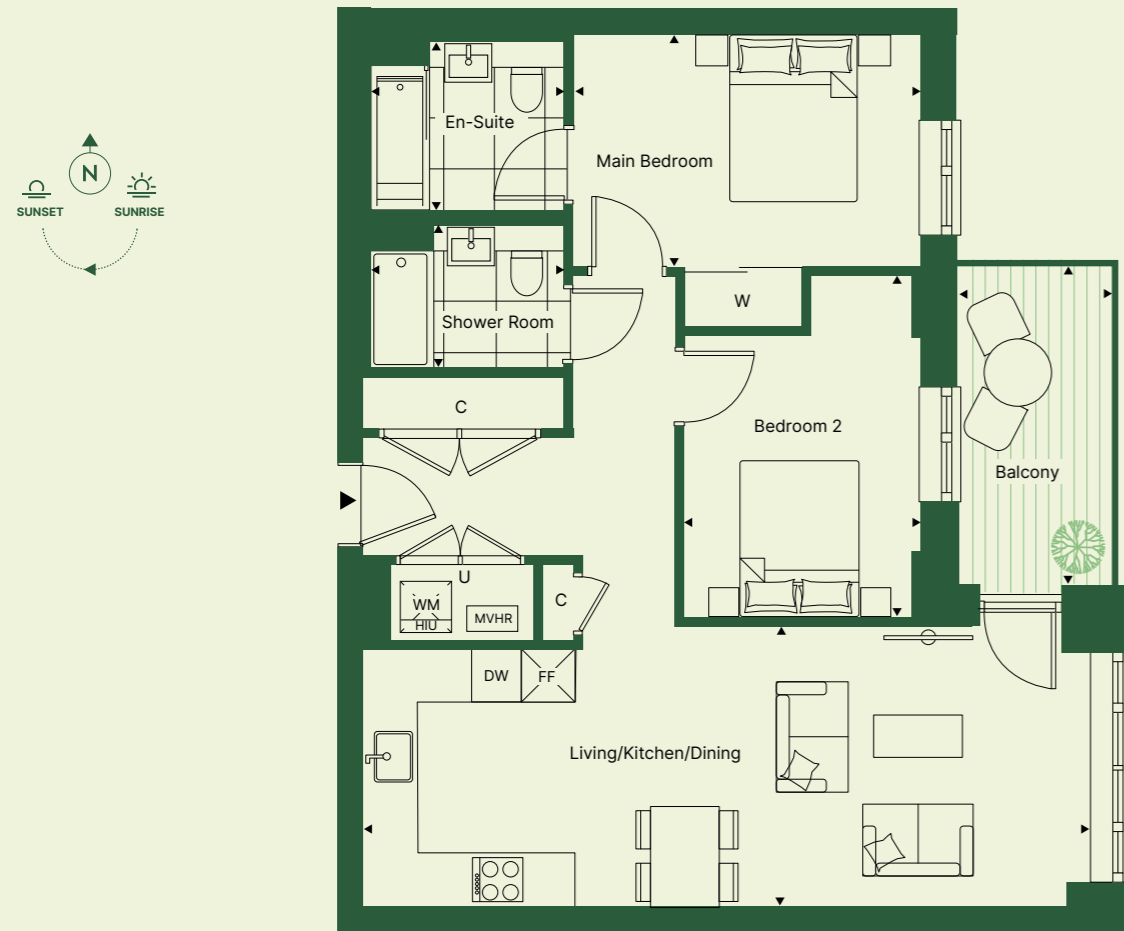
► Entrance C-Cupboard HIU-Heat Interface Unit MVHR-Mechanical Ventilation with Heat Recovery Utility  
W-Wardrobe WM-Washing Machine DW-Dishwasher FF-Fridge Freezer

# 2 BED HOPPER HOUSE

Living/Kitchen/Dining	8.62m x 3.34m	28' 3" x 10' 11"
Main Bedroom	4.10m x 2.75m	13' 5" x 9' 0"
Bedroom 2	2.80m x 4.04m	9' 2" x 13' 3"
En-Suite Bathroom	1.68m x 2.28m	5' 6" x 7' 6"
Shower Room	1.98m x 2.28m	6' 5" x 7' 6"
Balcony	1.83m x 3.81m	6' 0" x 12' 6"

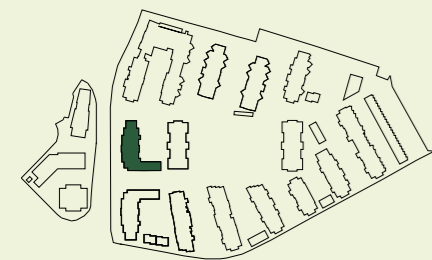
<b>Total Internal Area</b>	<b>74.9 sq m</b>	<b>806 sq ft</b>
<b>Total Internal &amp; External Area</b>	<b>81.8 sq m</b>	<b>880 sq ft</b>

Apartments: 201, 301, 401

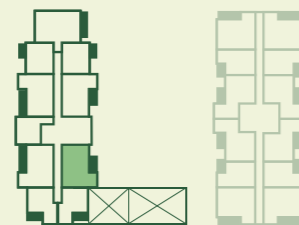


# GILLHAM HOUSE

SITE PLAN



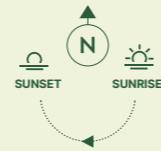
APARTMENT LOCATION



LEVEL/PLOT

4	401
3	301
2	201

► Entrance C-Cupboard HIU-Heat Interface Unit MVHR-Mechanical Ventilation with Heat Recovery Utility  
W-Wardrobe WM-Washing Machine DW-Dishwasher FF-Fridge Freezer

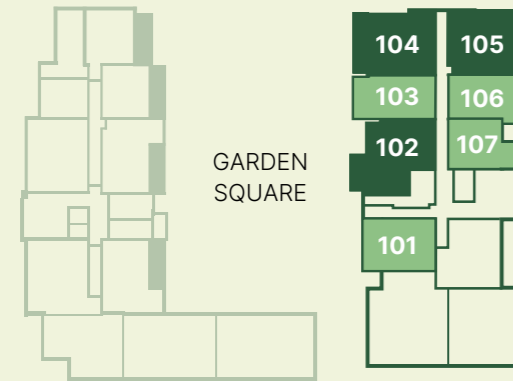


# 1 BED GILHAM HOUSE

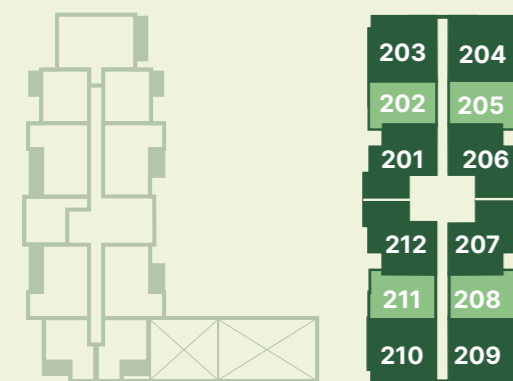
Living/Kitchen/Dining	7.41m x 3.12m	24' 4" x 10' 3"
Bedroom	4.76m x 2.80m	15' 7" x 9' 2"
Bathroom	1.98m x 2.28m	6' 5" x 7' 6"
Balcony	1.80m x 3.08m	5' 10" x 10' 1"

<b>Total Internal Area</b>	<b>51.2 sq m</b>	<b>551 sq ft</b>
<b>Total Internal &amp; External Area</b>	<b>56.7 sq m</b>	<b>610 sq ft</b>

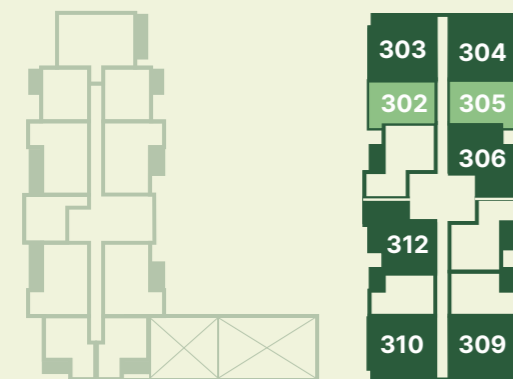
## FIRST FLOOR



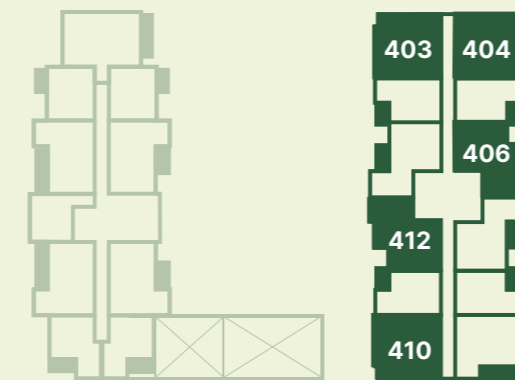
## SECOND FLOOR



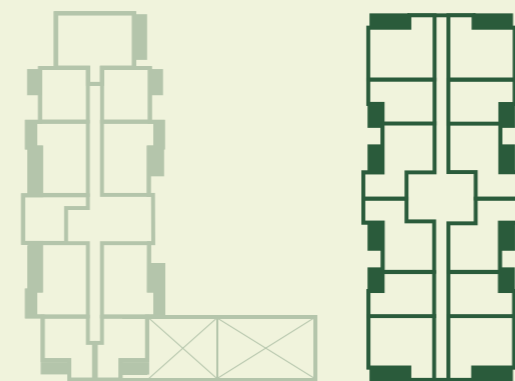
## THIRD FLOOR



## FOURTH FLOOR



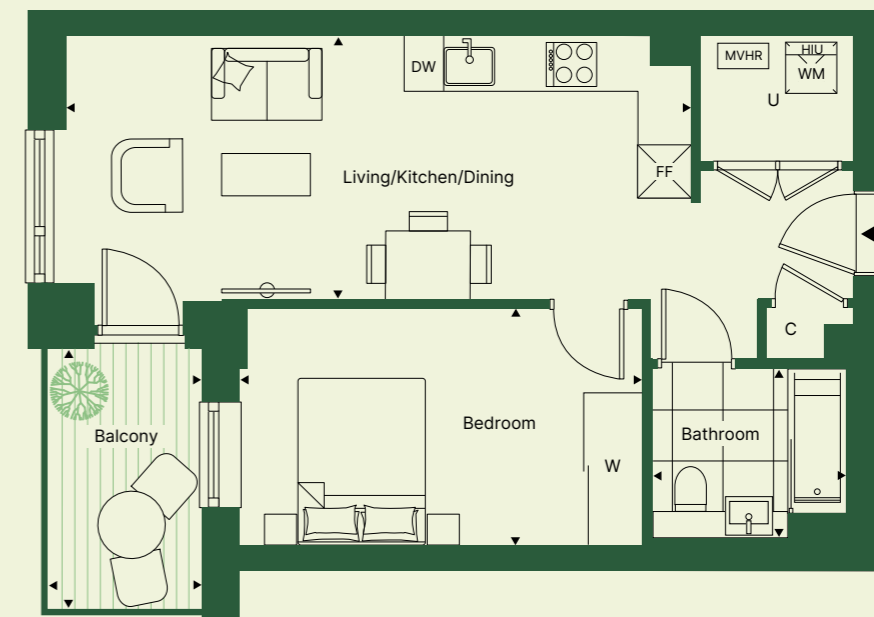
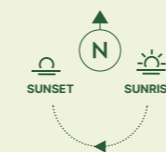
## EIGHTH FLOOR



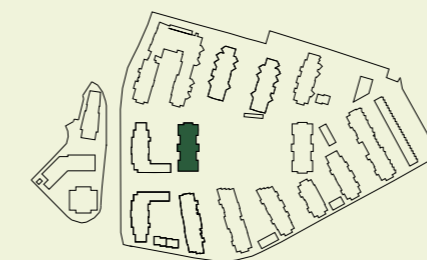
■ 1 BED APARTMENT

■ 2 BED APARTMENT

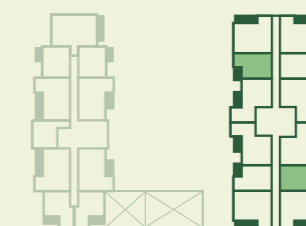
Apartment: 202, 208<sup>†</sup>, 302



## SITE PLAN



## APARTMENT LOCATION



## LEVEL/PLOT

3	302
2	202, 208 <sup>†</sup>

<sup>†</sup> Rotated to floorplan shown ▶ Entrance C-Cupboard HIU-Heat Interface Unit MVHR-Mechanical Ventilation with Heat Recovery Utility  
W-Wardrobe WM-Washing Machine DW-Dishwasher FF-Fridge Freezer

# 1 BED GILHAM HOUSE

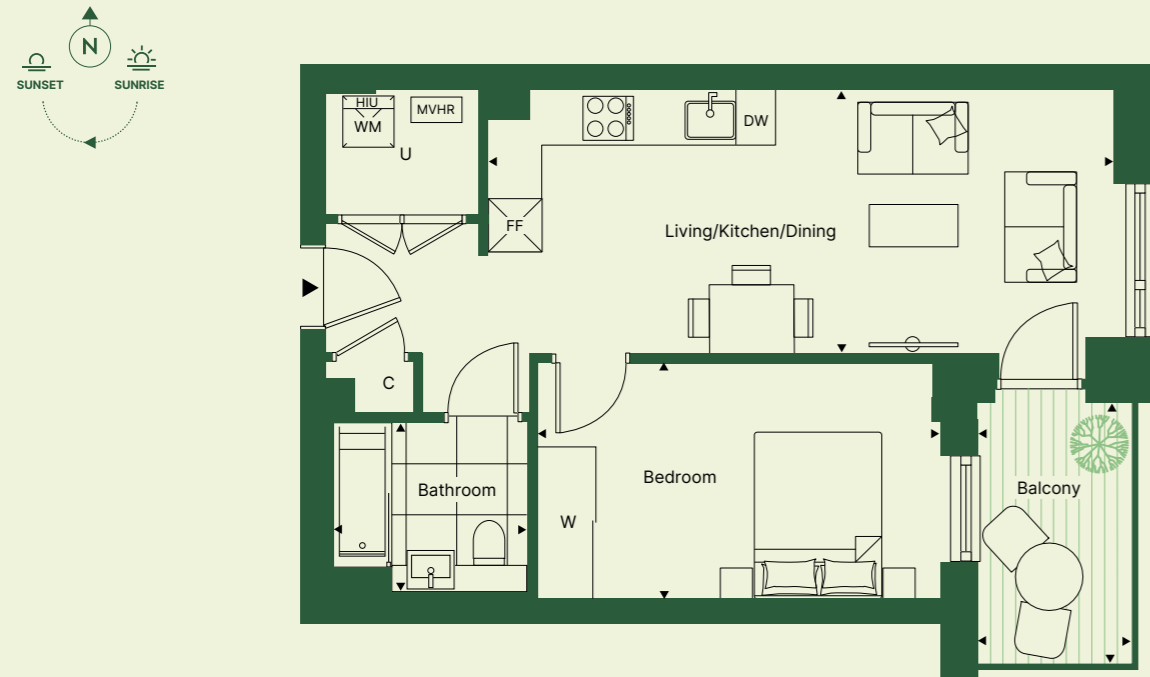
Living/Kitchen/Dining	7.41m x 3.12m	24' 4" x 10' 3"
Bedroom	4.76m x 2.80m	15' 7" x 9' 2"
Bathroom	1.98m x 2.28m	6' 5" x 7' 6"
Balcony	1.83m x 3.08	6' 0" x 10' 1"
<b>Total Internal Area</b>	<b>51.2 sq m</b>	<b>551 sq ft</b>
<b>Total Internal &amp; External Area</b>	<b>56.8 sq m</b>	<b>612 sq ft</b>

# 1 BED GILHAM HOUSE

Living/Kitchen/Dining	6.25m x 3.69m	20' 6" x 12' 1"
Bedroom	3.76m x 3.08m	12' 4" x 10' 1"
Bathroom	1.68m x 2.28m	5' 6" x 7' 6"
Balcony	1.83m x 3.67m	6' 0" x 12' 0"
<b>Total Internal Area</b>	<b>51 sq m</b>	<b>549 sq ft</b>
<b>Total Internal &amp; External Area</b>	<b>57.7 sq m</b>	<b>621 sq ft</b>

Apartments: 106, 205, 211†, 305

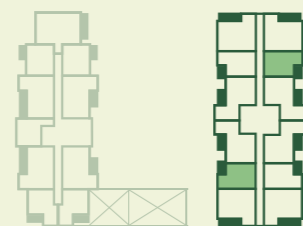
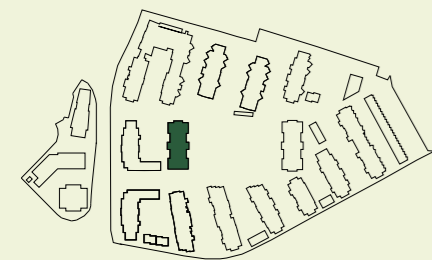
Apartment: 107



SITE PLAN

APARTMENT LOCATION

LEVEL/PLOT

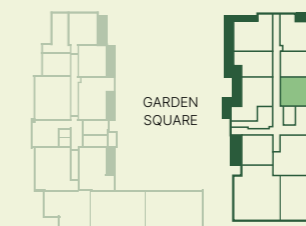
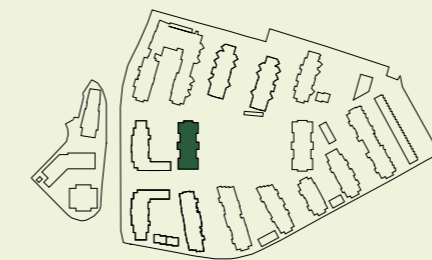


3	305
2	205, 211†
1	106

SITE PLAN

APARTMENT LOCATION

LEVEL/PLOT



1	107
---	-----

† Rotated to floorplan shown ▶ Entrance C-Cupboard HIU-Heat Interface Unit MVHR-Mechanical Ventilation with Heat Recovery Utility  
W-Wardrobe WM-Washing Machine DW-Dishwasher FF-Fridge Freezer

▶ Entrance C-Cupboard HIU-Heat Interface Unit MVHR-Mechanical Ventilation with Heat Recovery Utility  
W-Wardrobe WM-Washing Machine DW-Dishwasher FF-Fridge Freezer

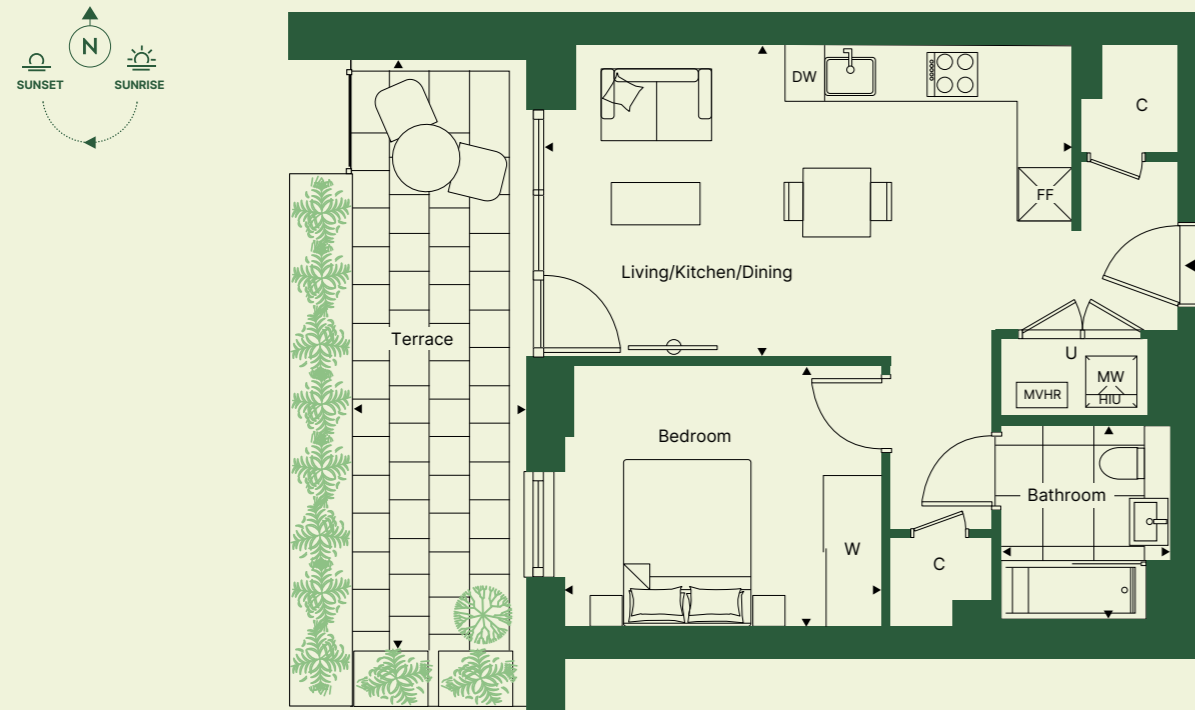
# 1 BED GILHAM HOUSE

Living/Kitchen/Dining	6.25m x 3.69m	20' 6" x 12' 1"
Bedroom	3.76m x 3.08m	12' 4" x 10' 1"
Bathroom	1.68m x 2.28m	5' 6" x 7' 6"
Terrace	2.04m x 6.96m	6' 8" x 22' 10"
<b>Total Internal Area</b>	<b>51 sq m</b>	<b>549 sq ft</b>
<b>Total Internal &amp; External Area</b>	<b>65.2 sq m</b>	<b>701 sq ft</b>

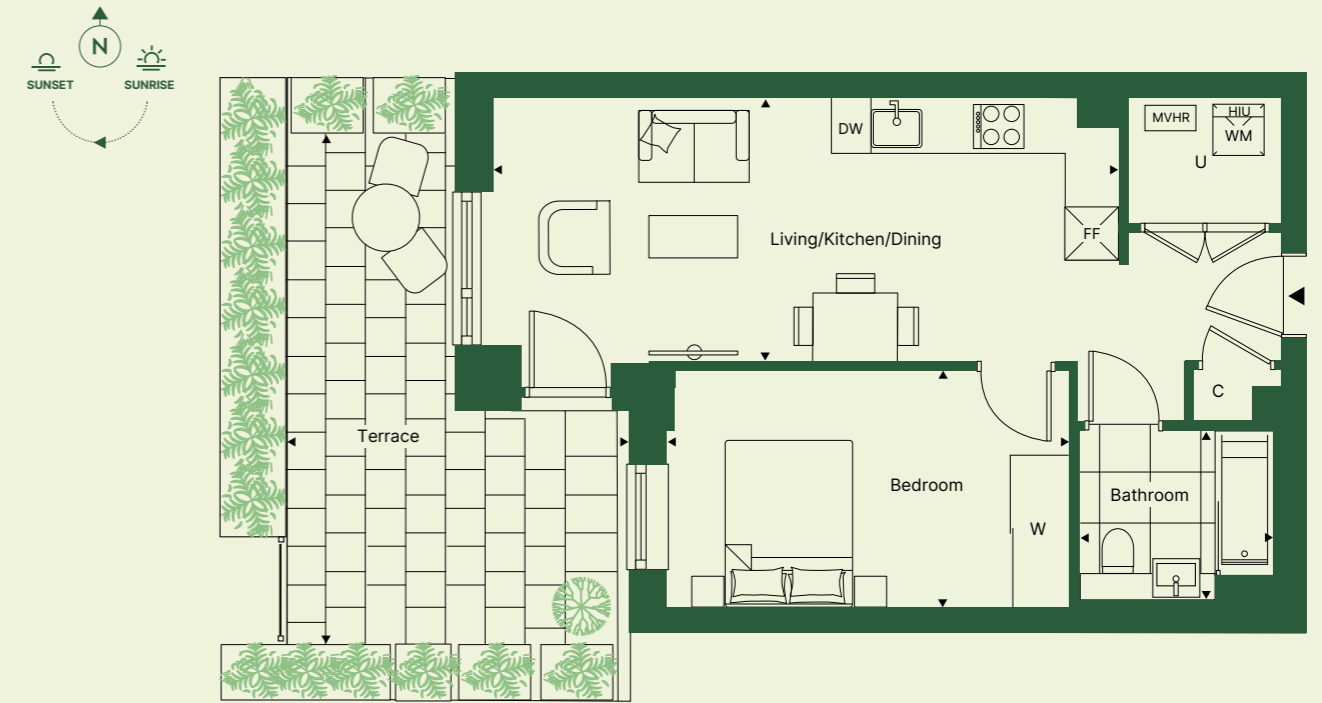
# 1 BED GILHAM HOUSE

Living/Kitchen/Dining	7.41m x 3.12m	24' 4" x 10' 3"
Bedroom	4.76m x 2.80m	15' 7" x 9' 2"
Bathroom	1.98m x 2.28m	6' 5" x 7' 6"
Terrace	4.03m x 5.97m	13' 2" x 19' 7"
<b>Total Internal Area</b>	<b>51.2 sq m</b>	<b>551 sq ft</b>
<b>Total Internal &amp; External Area</b>	<b>68.6 sq m</b>	<b>738 sq ft</b>

Apartment: 101



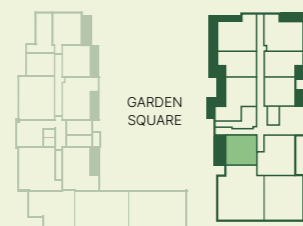
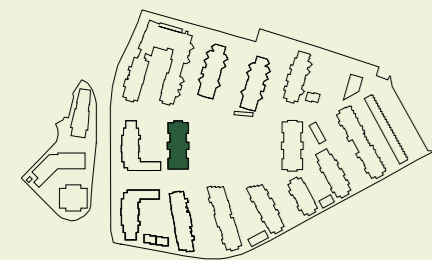
Apartment: 103



SITE PLAN

APARTMENT LOCATION

LEVEL/PLOT



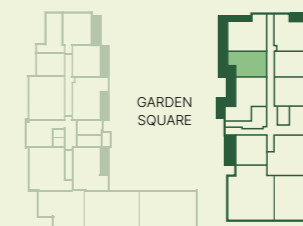
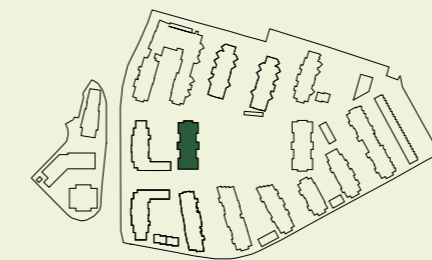
1 101

► Entrance C-Cupboard HIU-Heat Interface Unit MVHR-Mechanical Ventilation with Heat Recovery Utility  
W-Wardrobe WM-Washing Machine DW-Dishwasher FF-Fridge Freezer

SITE PLAN

APARTMENT LOCATION

LEVEL/PLOT




1 103

► Entrance C-Cupboard HIU-Heat Interface Unit MVHR-Mechanical Ventilation with Heat Recovery Utility  
W-Wardrobe WM-Washing Machine DW-Dishwasher FF-Fridge Freezer

# 2 BED GILHAM HOUSE

Living/Kitchen/Dining	7.50m x 4.04m	24' 7" x 13' 3"
Main Bedroom	4.76m x 2.75m	15' 7" x 9' 0"
Bedroom 2	3.81m x 3.32m	12' 6" x 10' 10"
En-Suite Bathroom	1.68m x 2.28m	5' 6" x 7' 6"
Shower Room	1.98m x 2.28m	6' 5" x 7' 6"
Balcony	1.83m x 3.67m	5' 6" x 12' 2"
<b>Total Internal Area</b>	<b>72.8 sq m</b>	<b>784 sq ft</b>
<b>Total Internal &amp; External Area</b>	<b>79.3 sq m</b>	<b>853 sq ft</b>

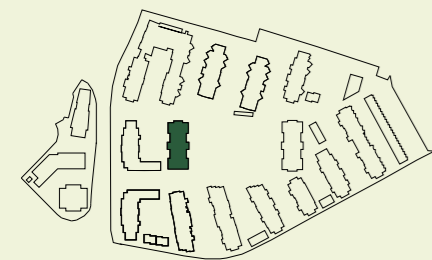
Apartments: 201, 207<sup>†</sup> 



SITE PLAN

APARTMENT LOCATION

LEVEL/PLOT



2 201, 207<sup>†</sup>

<sup>†</sup> Rotated to floorplan shown ▶ Entrance C-Cupboard HIU-Heat Interface Unit MVHR-Mechanical Ventilation with Heat Recovery Utility  
W-Wardrobe WM-Washing Machine DW-Dishwasher FF-Fridge Freezer

# 2 BED GILHAM HOUSE

Living/Kitchen/Dining	7.50m x 4.04m	24' 7" x 13' 3"
Main Bedroom	4.76m x 2.75m	15' 7" x 9' 0"
Bedroom 2	3.81m x 3.32m	12' 6" x 10' 10"
En-Suite Bathroom	1.68m x 2.28m	5' 6" x 7' 6"
Shower Room	1.98m x 2.28m	6' 5" x 7' 6"
Balcony	1.83m x 3.67m	6' 0" x 12' 0"
<b>Total Internal Area</b>	<b>72.9 sq m</b>	<b>785 sq ft</b>
<b>Total Internal &amp; External Area</b>	<b>79.6 sq m</b>	<b>857 sq ft</b>

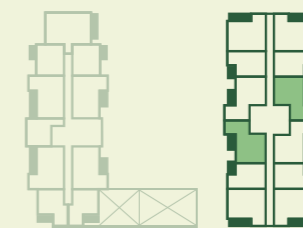
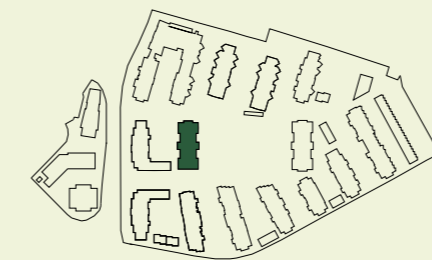
Apartments: 206, 212<sup>†</sup>, 306, 312<sup>†</sup>, 406, 412<sup>†</sup>



SITE PLAN

APARTMENT LOCATION

LEVEL/PLOT



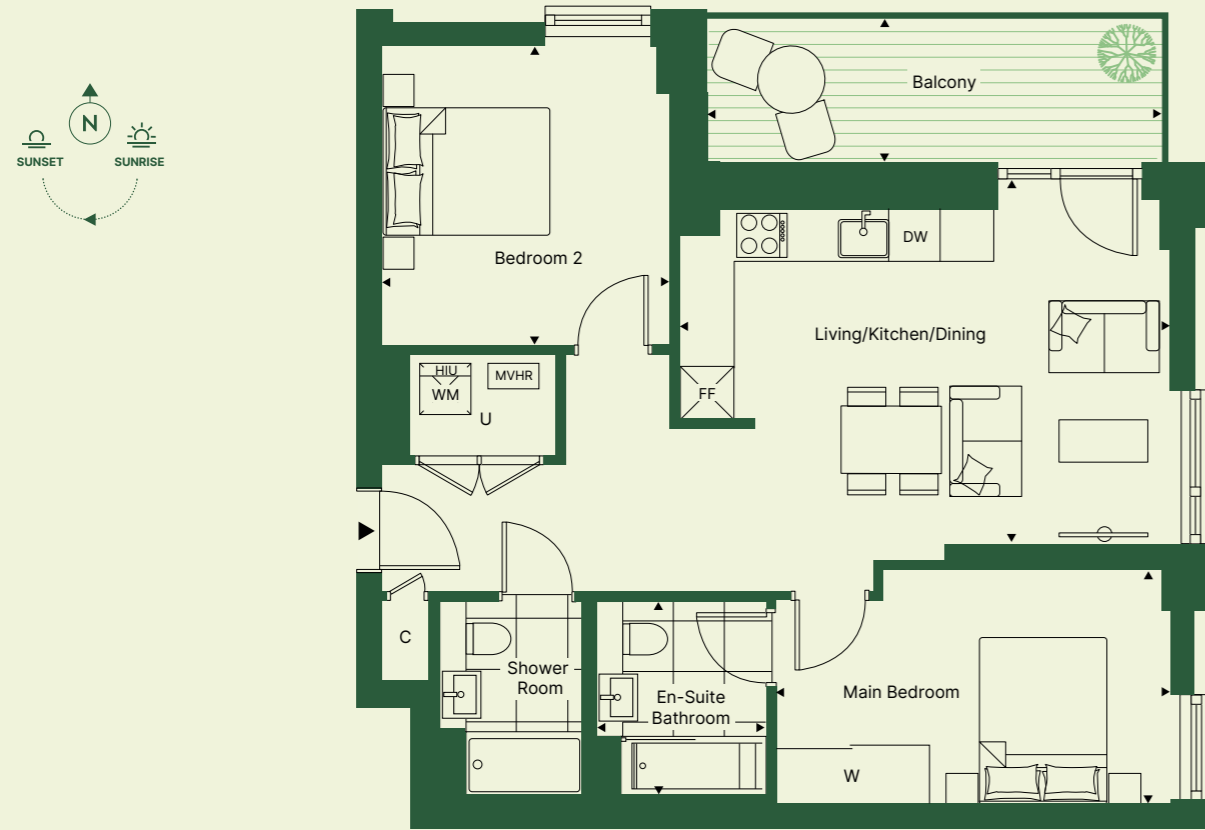
4 406, 412<sup>†</sup>  
3 306, 312<sup>†</sup>  
2 206, 212<sup>†</sup>

<sup>†</sup> Rotated to floorplan shown ▶ Entrance C-Cupboard HIU-Heat Interface Unit MVHR-Mechanical Ventilation with Heat Recovery Utility  
W-Wardrobe WM-Washing Machine DW-Dishwasher FF-Fridge Freezer

# 2 BED GILHAM HOUSE

Living/Kitchen/Dining	5.81m x 4.32m	19' 1" x 14' 2"
Main Bedroom	4.66m x 2.76m	15' 3" x 9' 0"
Bedroom 2	3.42m x 3.54m	11' 2" x 11' 7"
En-Suite Bathroom	1.68m x 2.28m	5' 6" x 7' 6"
Shower Room	1.98m x 2.28m	6' 5" x 7' 6"
Balcony	5.38m x 1.68m	17' 8" x 5' 6"
<b>Total Internal Area</b>	<b>72.6 sq m</b>	<b>781 sq ft</b>
<b>Total Internal &amp; External Area</b>	<b>81.6 sq m</b>	<b>877 sq ft</b>

Apartments: 105, 204, 210<sup>†</sup>, 304<sup>†</sup>, 310<sup>†</sup>, 404, 410<sup>†</sup>



# 2 BED GILHAM HOUSE

Living/Kitchen/Dining	5.81m x 4.32m	19' 1" x 14' 2"
Main Bedroom	5.25m x 2.76m	17' 3" x 9' 0"
Bedroom 2	3.40m x 3.54m	11' 2" x 11' 7"
En-Suite Bathroom	1.68m x 2.28m	5' 6" x 7' 6"
Shower Room	1.98m x 2.28m	6' 5" x 7' 6"
Balcony	5.38m x 1.68m	17' 7" x 5' 6"
<b>Total Internal Area</b>	<b>73.5 sq m</b>	<b>791 sq ft</b>
<b>Total Internal &amp; External Area</b>	<b>82.5 sq m</b>	<b>887 sq ft</b>

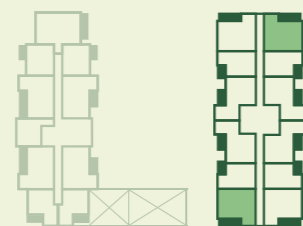
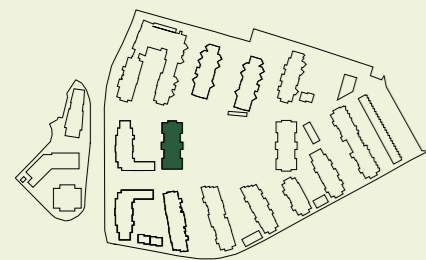
Apartments: 203, 209<sup>†</sup>, 303, 309<sup>†</sup>, 403



## SITE PLAN

## APARTMENT LOCATION

## LEVEL/PLOT



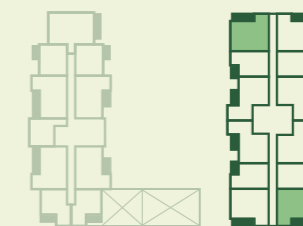
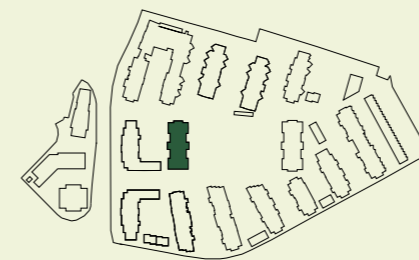
4	404, 210 <sup>†</sup>
3	304, 310 <sup>†</sup>
2	204, 210 <sup>†</sup>
1	105

† Rotated to floorplan shown ▶ Entrance C-Cupboard HIU-Heat Interface Unit MVHR-Mechanical Ventilation with Heat Recovery Utility  
W-Wardrobe WM-Washing Machine DW-Dishwasher FF-Fridge Freezer

## SITE PLAN

## APARTMENT LOCATION

## LEVEL/PLOT



4	403
3	303, 309 <sup>†</sup>
2	203, 209 <sup>†</sup>


† Rotated to floorplan shown ▶ Entrance C-Cupboard HIU-Heat Interface Unit MVHR-Mechanical Ventilation with Heat Recovery Utility  
W-Wardrobe WM-Washing Machine DW-Dishwasher FF-Fridge Freezer

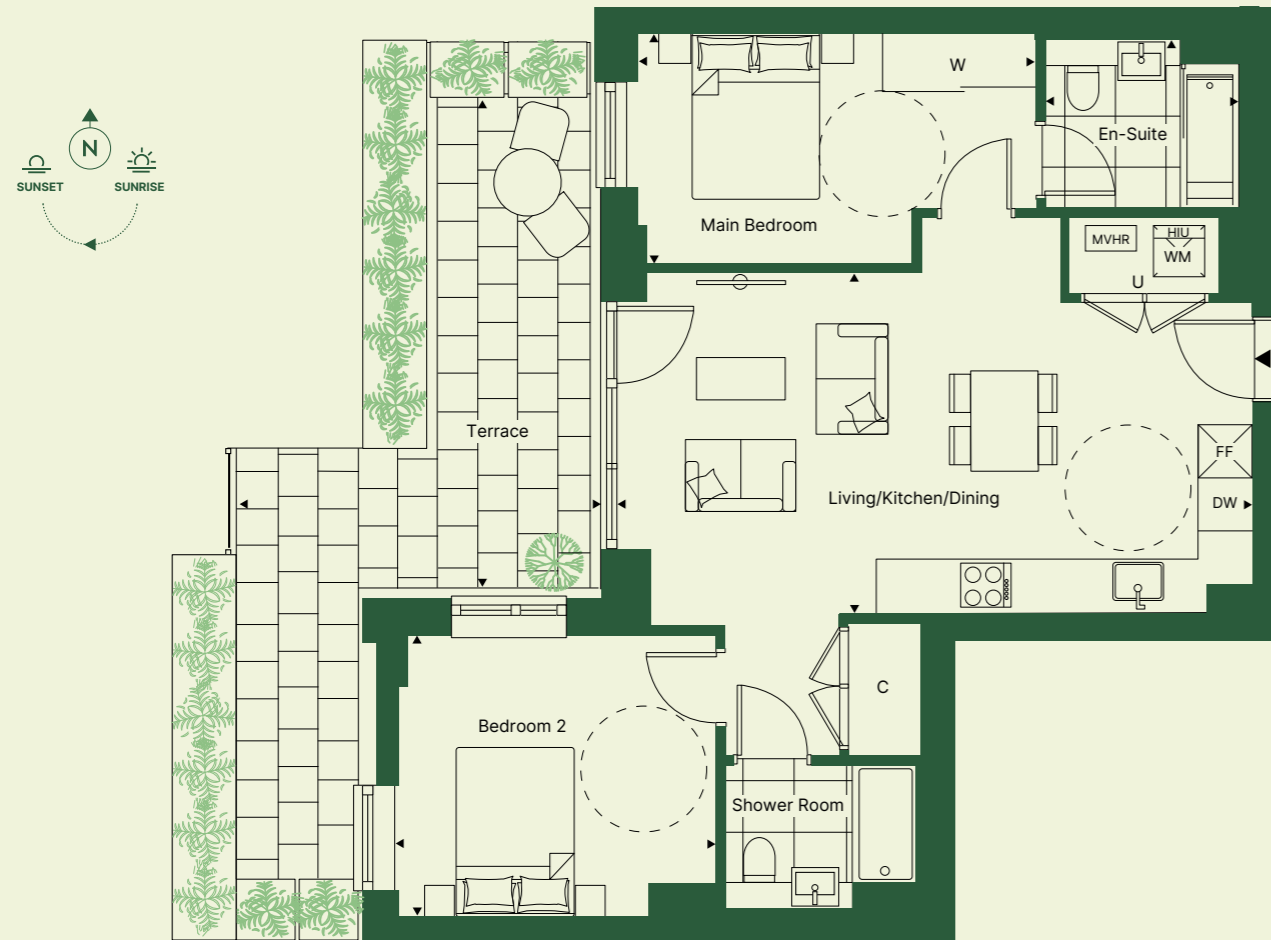
# 2 BED GILHAM HOUSE

Living/Kitchen/Dining	7.50m x 4.04m	24' 7" x 13' 3"
Main Bedroom	4.76m x 2.75m	15' 7" x 9' 0"
Bedroom 2	3.81m x 3.32m	12' 6" x 10' 10"
En-Suite Bathroom	1.68m x 2.28m	5' 6" x 7' 6"
Shower Room	1.98m x 2.28m	6' 5" x 7' 6"
Terrace	4.04m x 10.15m	13' 3" x 33' 3"
<b>Total Internal Area</b>	<b>72.8 sq m</b>	<b>784 sq ft</b>
<b>Total Internal &amp; External Area</b>	<b>93.8 sq m</b>	<b>1010 sq ft</b>

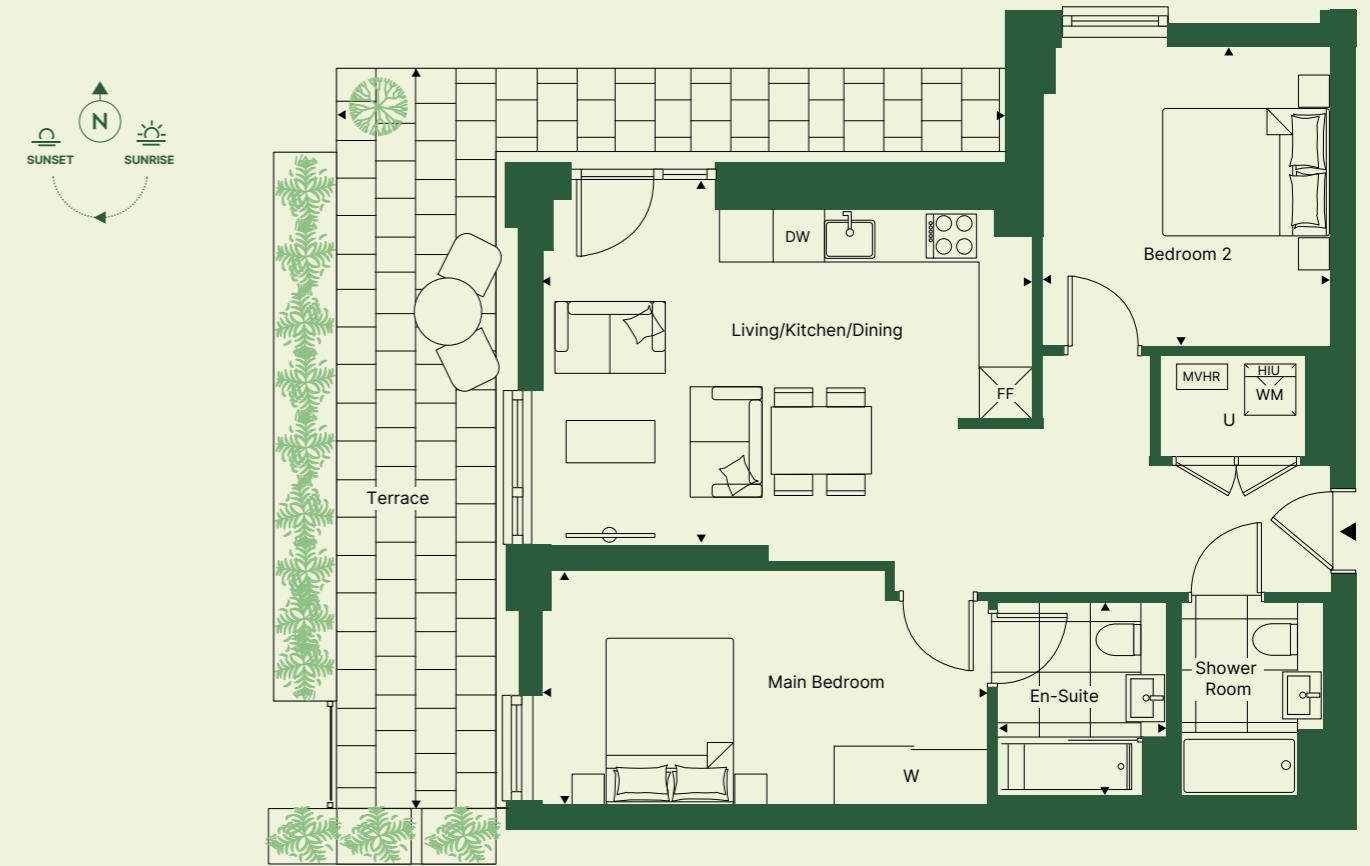
# 2 BED GILHAM HOUSE

Living/Kitchen/Dining	5.81m x 4.32m	19' 1" x 14' 2"
Main Bedroom	5.25m x 2.76m	17' 3" x 9' 0"
Bedroom 2	3.40m x 3.54m	11' 2" x 11' 7"
En-Suite Bathroom	1.68m x 2.28m	5' 6" x 7' 6"
Shower Room	1.98m x 2.28m	6' 5" x 7' 6"
Terrace	7.88m x 8.72m	25' 10" x 28' 7"
<b>Total Internal Area</b>	<b>73.5 sq m</b>	<b>791 sq ft</b>
<b>Total Internal &amp; External Area</b>	<b>97.3 sq m</b>	<b>1041 sq ft</b>

Apartment: 102 



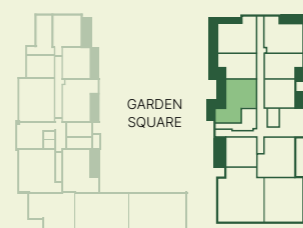
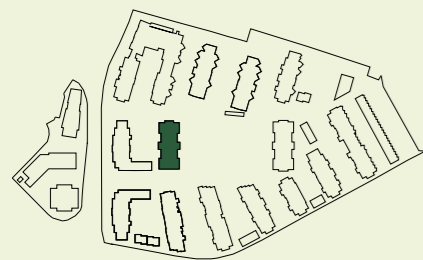
Apartment: 104



SITE PLAN

APARTMENT LOCATION

LEVEL/PLOT

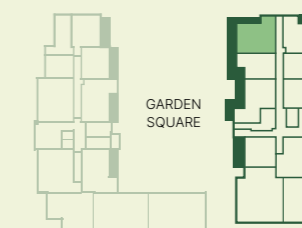
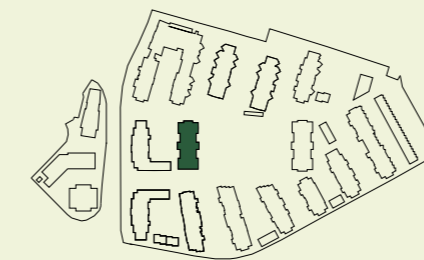


1 102

SITE PLAN

APARTMENT LOCATION

LEVEL/PLOT



1 104

► Entrance C-Cupboard HIU-Heat Interface Unit MVHR-Mechanical Ventilation with Heat Recovery Utility  
W-Wardrobe WM-Washing Machine DW-Dishwasher FF-Fridge Freezer



## IT'S ALL IN THE DETAIL

### KITCHEN

- Cashmere kitchen cabinets with handleless soft close doors
- White speckled Silestone worktops with chalk upstand and splashback
- Satin steel undermounted sink with single lever Cascata mixer brushed steel tap
- Under sink 3 stage separation waste bin
- Bosch integrated single under counter oven with Bosch black glass hob
- Elica wall mounted grey extractor fan
- Bosch integrated fridge freezer
- Electrolux integrated dishwasher

### BATHROOMS

- Large dark grey ceramic wall tiles
- Light grey floor tiles
- Semi-recessed white washbasin with chrome mixer tap
- Wall-hung WC with standard-close seat and chrome flushplate
- White acrylic bath with built-in bath/shower mixer, shower head and clear bath screen to main bathroom
- Mobiform black bath panel to main bathroom
- Mobiform cabinet with mirror and matching under sink towel store to main bathroom
- White shower with built-in mixer, shower head and sliding screen to en-suite
- Full height and width mirror above sink to en-suite
- Heated towel rail

### BEDROOMS

- Cormar Sensation Twist carpet in light grey
- Fitted full height wardroom with silver mirrored doors

### INTERNAL DOORS & IRONMONGERY

- Polished chrome fittings
- White painted wooden doors
- White satinwood finish to woodwork and skirting boards

### FLOORING & HEATING

- Pergo Espoo laminate flooring in grey wooden effect
- White radiator panel heaters

### SECURITY & PEACE OF MIND

- Video entry system (via App)
- High quality, lockable, restricted opening windows and external doors
- 'Secured by Design' certification achieved throughout the development
- 24-hour concierge service and monitored CCTV
- Smoke detectors to corridors and living space
- Heat detector to kitchen
- Sprinkler system
- 12 year new build warranty
- 2 year defects period
- 265 year lease

### ELECTRICAL & LIGHTING

- Downlights to living/kitchen/dining room, hall, bathroom and en suites
- White pendant lights to bedrooms and cupboards
- LED strip lights under kitchen cabinets

### GENERAL

- Electrolux freestanding washer/dryer housed in utility cupboard
- Wired for Hyperoptic internet service
- White paint finish to walls and ceilings throughout



# More than just a place to live

We at Peabody have a proud legacy of helping generations of homebuyers and residents find their place in thriving neighbourhoods, communities and homes for over 160 years.

The team at Peabody New Homes is dedicated to finding you a home that is more than just a place to live. A place you can call your own. A place to belong. A place that you're proud to call home.

Find @PeabodyNewHomes on



## BUILDING HISTORY

Formed over 160 years ago by the American financier and philanthropist George Peabody, Peabody is one of the UK's oldest and largest housing associations responsible for more than 109,000 homes and around 220,000 residents across London and the Home Counties.



## CUSTOMER FOCUS

Whether it's your first or forever home, we know that buying a new place can be a demanding time. Our sales team is committed to guiding you through the process and helping you every step of the way. Rated "Excellent" on Trustpilot, we're proud to offer you a service that makes a difference.



## QUALITY, DESIGN & SUSTAINABILITY

Peabody's reputation is one of the most respected in the housing industry renowned for quality, multi-award-winning and innovative design. We work with industry experts and continually monitor quality throughout the building process to reduce our impact on climate change, lessen our carbon footprint and create properties people are proud to call home.

Our Greener Homes Programme is our commitment to the environment and will aim to minimise our impact on the planet and support thriving neighbourhoods.



Scan here to find out more

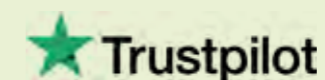


## SOCIAL IMPACT

Our social purpose is why we exist. We re-invest the surplus made from the sale of our homes to provide more homes and services to those who need it most. We deliver services that support customers and the wider communities that we work in, and invest in local projects through our Community Foundation.



Scan here to find out more



### \*2024/2025 Annual Report

Every care has been taken in the preparation of this brochure. The details contained herein are for guidance only and should not be relied upon as exactly describing any of the particular material illustrated or written by any order under the Consumer Protection from Unfair Trading Regulations 2008. This information does not constitute a contract, part of a contract or warranty. The developer operates a programme of continuous product development. Features, internal and external, may vary from time to time and may differ from those shown in the brochure. Computer generated images and photography used within this brochure are indicative only. Lombard Square is a marketing name and may not form part of the postal address for these properties. Home layouts provide approximate measurements only. Dimensions, which are taken from the indicated points of measurement, are for guidance only and are not intended to be used for carpet sizes, appliance space or items of furniture. Areas are provided as gross internal areas and may vary. Bathroom and kitchen layouts are indicative only and are subject to change. The information contained within this document does not constitute part of any offer, contract or warranty. Whilst the plans have been prepared with all due care for the convenience of the intending purchaser, the information contained herein is a preliminary guide only. April 2026.

 Peabody

**THAMESMEAD** 