



69 Greenfinch Road

Didcot, OX11 6BG

50% Shared Ownership £110,000

A well-presented ground floor property offering comfortable and practical accommodation throughout. The property comprises two bedrooms, an open-plan living room/kitchen area, a family bathroom, and a welcoming hallway. Externally, the property benefits from two allocated parking spaces one of which is located within the shared car park.

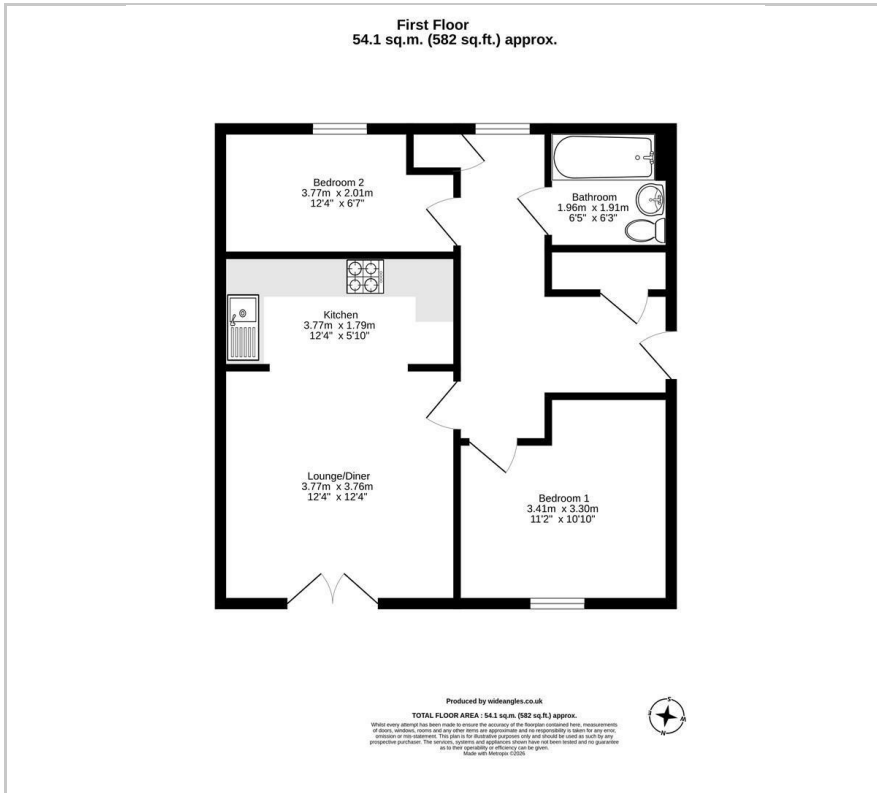
The property is situated in the popular town of Didcot, which offers a wide range of local amenities including supermarkets, cafés, restaurants, leisure facilities, and healthcare services. The nearby Orchard Centre provides convenient shopping and dining options, while Didcot Parkway railway station offers excellent transport links to Oxford, Reading, and London Paddington, making the area particularly attractive for commuters.

Didcot also benefits from a selection of well-regarded schools, parks, and recreational spaces, with the surrounding Oxfordshire countryside offering a variety of walking and cycling routes. The town's ongoing development and strong transport connections continue to make it a sought-after location for both families and professionals.

- Full Market Price £220,000
- Shares Available 50% - 75%
- Current Monthly Rent £369.90
- Current Monthly Service Charge £74.49
- Current Monthly Ground Rent £8.33
- Lease Term Remaining 113 years
- EPC Rating B
- Council Tax Band B
- Two Allocated Parking Spaces



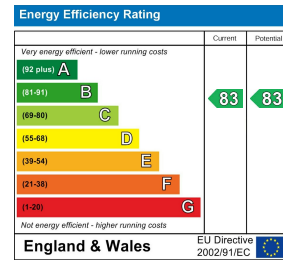
Floor Plan



Area Map



Energy Efficiency Graph



These particulars, whilst believed to be accurate are set out as a general outline only for guidance and do not constitute any part of an offer or contract. Intending purchasers should not rely on them as statements of representation of fact, but must satisfy themselves by inspection or otherwise as to their accuracy. No person in this firm's employment has the authority to make or give any representation or warranty in respect of the property.