

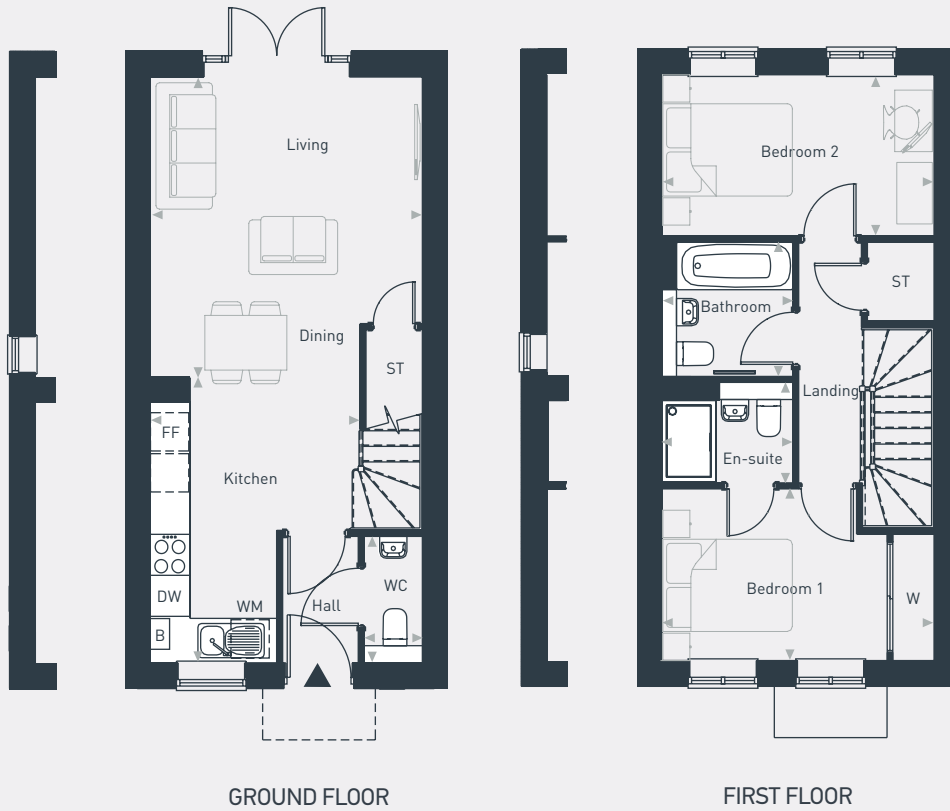
# Ashdown Gardens

## The Brookleigh 2 bedroom house



Plots as drawn: 76 and 77  
Handed: 78

68.54 sq.m / 738 sq.ft



FF: Fridge/Freezer ST: Store DW: Dishwasher WM: Washing Machine WC: Water Closet B: Boiler

DIMENSIONS	m	ft
Kitchen/Living/Dining	3.99m x 8.57m	13'1" x 28'1"
WC	0.85m x 1.85m	2' 9" x 6' 0"

DIMENSIONS	m	ft
Bedroom 1	3.99m x 2.51m	13'1" x 8'2"
En-suite	1.93m x 1.47m	6'3" x 4'9"
Bedroom 2	3.99m x 2.35m	13'1" x 7'8"
Bathroom	1.96m x 1.93m	6'5" x 6'3"



01793 205 027 | [placesforpeople.co.uk/ashdown-gardens](https://placesforpeople.co.uk/ashdown-gardens)  
Marlborough Park, Pipers Way, Old Town, Swindon