

SNG AT
M
MONTEM



Shared Ownership floor plans

0300 330 0718

newbuildso@sovereign.org.uk



SNG at Montem

Type J — Plot 112

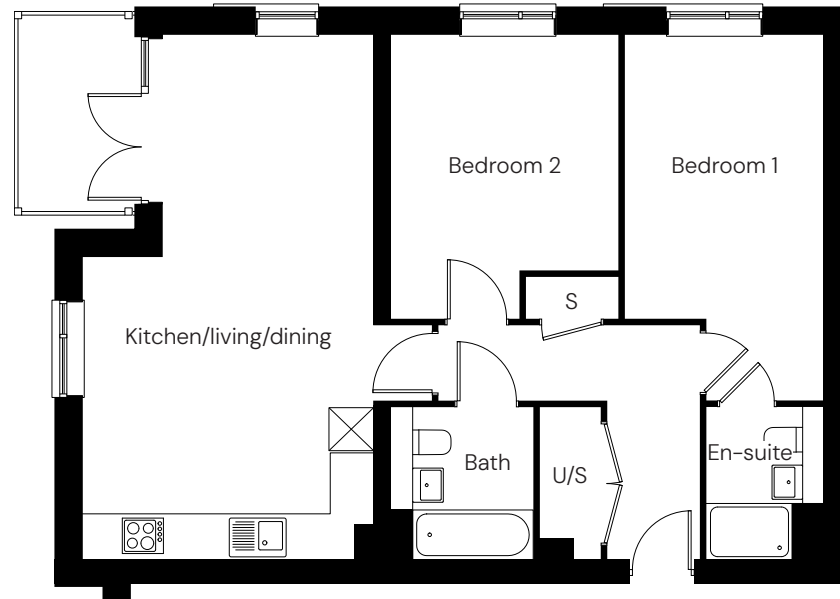
2 bedroom first floor apartment with balcony

2  2 

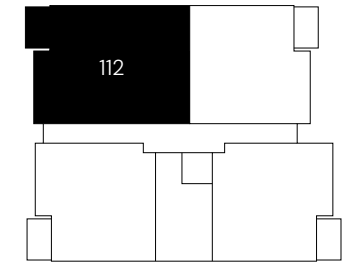
Room

Kitchen/living/dining	4.1m x 7.4m
Bedroom 1	2.8m x 5.2m
Bedroom 2	3.2m x 4.0m
Total area	72.3m²

Key: S Storage U/S Utility/storage



Apartment location



Full market value	% share	Share price	Monthly rent	Estimated monthly service charge	Estimated monthly mortgage payment	Estimated monthly Council Tax	Estimated total monthly cost	Availability
-------------------	---------	-------------	--------------	----------------------------------	------------------------------------	-------------------------------	------------------------------	--------------

Prices, monthly rental charge and service charge are correct at time of print and subject to review. Management fee under review. The guided monthly mortgage amount assumes 5% deposit, 5.5% mortgage interest rate and a mortgage term of 30 years. The monthly council tax cost is an estimate based on a comparable property in the area, assuming the same council tax band, and you should contact the local authority for confirmation of correct banding/value on the property you have purchased. Eligibility conditions apply and can be found at www.sovereignliving.org.uk. Sovereign Network Group is the trading name of Sovereign Housing Association Limited, which is charitable.

SNG at Montem

Type J — Plot 116

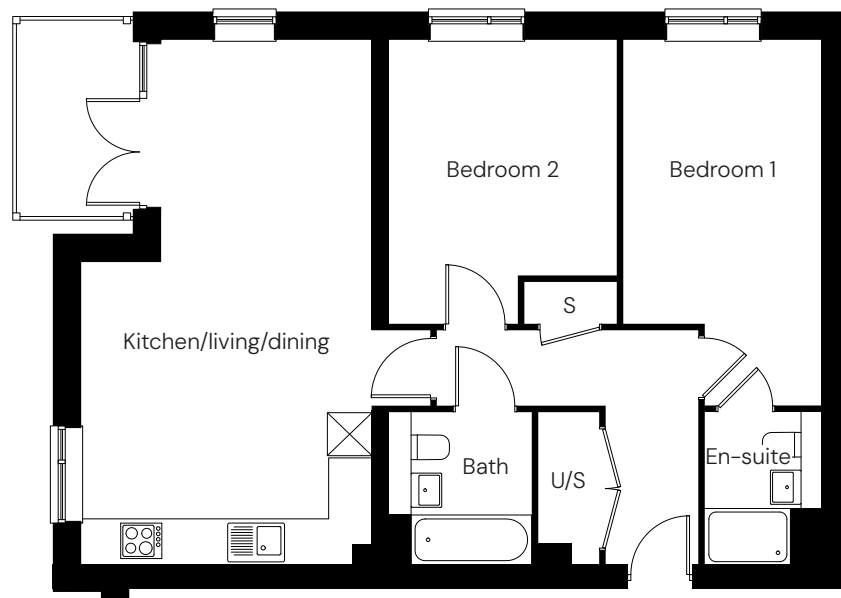
2 bedroom second floor apartment with balcony

2  2 

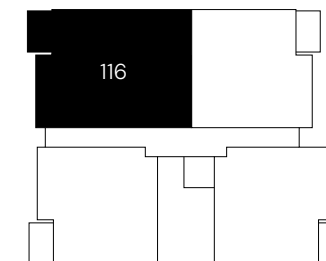
Room

Kitchen/living/dining	4.1m x 7.4m
Bedroom 1	2.8m x 5.2m
Bedroom 2	3.2m x 4.0m
Total area	72.3m²

Key: S Storage U/S Utility/storage



Apartment location



Full market value	% share	Share price	Monthly rent	Estimated monthly service charge	Estimated monthly mortgage payment	Estimated monthly Council Tax	Estimated total monthly cost	Availability
-------------------	---------	-------------	--------------	----------------------------------	------------------------------------	-------------------------------	------------------------------	--------------

Prices, monthly rental charge and service charge are correct at time of print and subject to review. Management fee under review. The guided monthly mortgage amount assumes 5% deposit, 5.5% mortgage interest rate and a mortgage term of 30 years. The monthly council tax cost is an estimate based on a comparable property in the area, assuming the same council tax band, and you should contact the local authority for confirmation of correct banding/value on the property you have purchased. Eligibility conditions apply and can be found at www.sovereignliving.org.uk. Sovereign Network Group is the trading name of Sovereign Housing Association Limited, which is charitable.

SNG at Montem

Type J — Plot 120

2 bedroom third floor apartment with balcony

2  2 

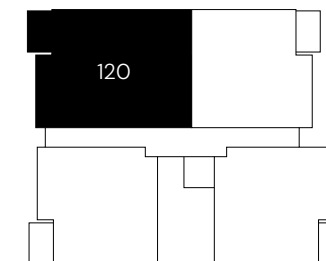
Room

Kitchen/living/dining	4.1m x 7.4m
Bedroom 1	2.8m x 5.2m
Bedroom 2	3.2m x 4.0m
Total area	72.3m²

Key: S Storage U/S Utility/storage



Apartment location



Full market value	% share	Share price	Monthly rent	Estimated monthly service charge	Estimated monthly mortgage payment	Estimated monthly Council Tax	Estimated total monthly cost	Availability
-------------------	---------	-------------	--------------	----------------------------------	------------------------------------	-------------------------------	------------------------------	--------------

Prices, monthly rental charge and service charge are correct at time of print and subject to review. Management fee under review. The guided monthly mortgage amount assumes 5% deposit, 5.5% mortgage interest rate and a mortgage term of 30 years. The monthly council tax cost is an estimate based on a comparable property in the area, assuming the same council tax band, and you should contact the local authority for confirmation of correct banding/value on the property you have purchased. Eligibility conditions apply and can be found at www.sovereignliving.org.uk. Sovereign Network Group is the trading name of Sovereign Housing Association Limited, which is charitable.