

HORIZON

AT HOME X

**SOUTHERN
HOUSING**
new homes

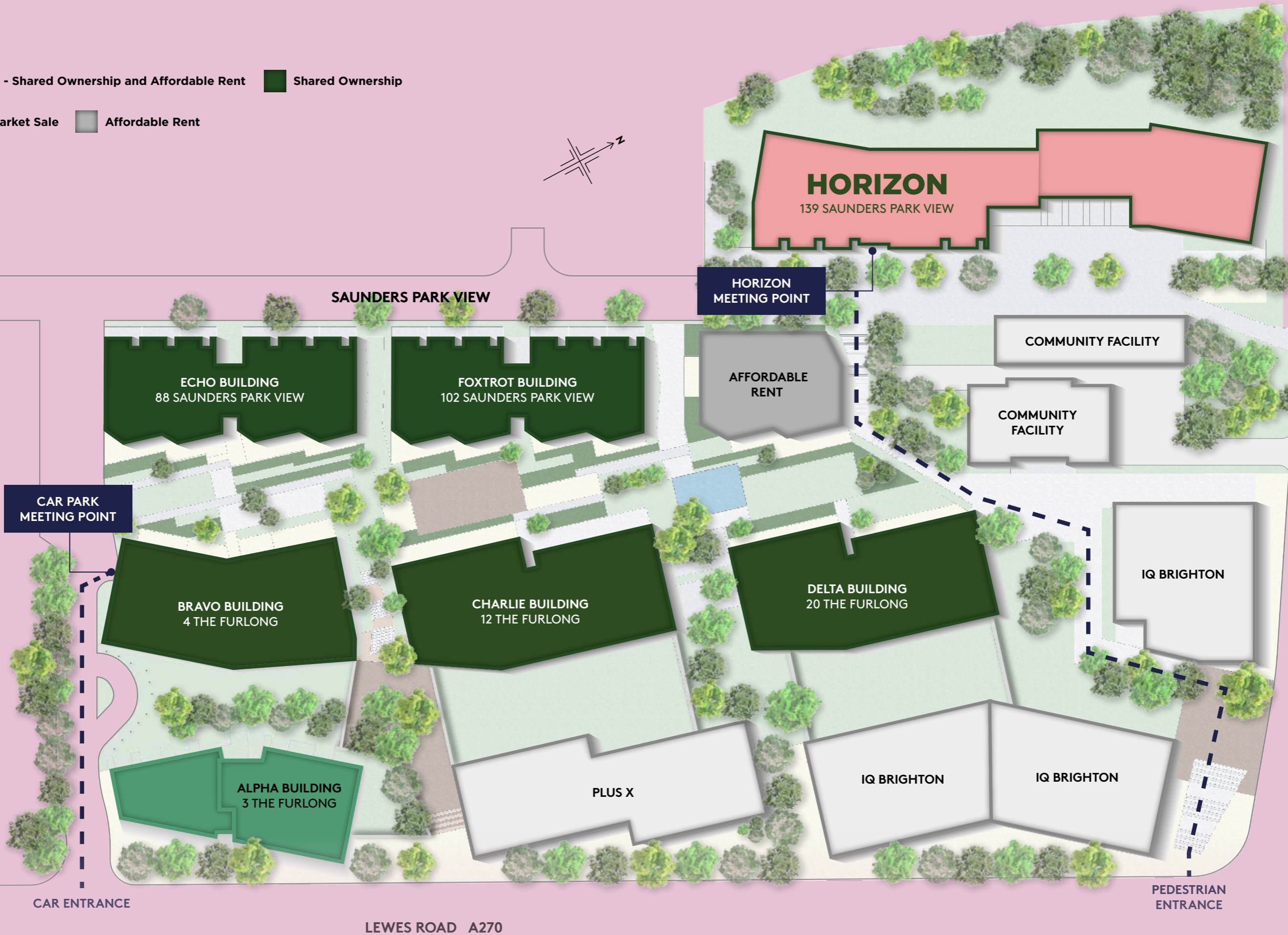
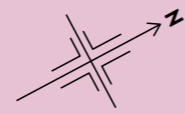
Live better, where park-side calm meets Brighton's lively scene.

A collection of one bedroom apartments available with Shared Ownership at Brighton's Preston Barracks regeneration. Horizon at Home X is a calmer place to come home to, while still keeping Brighton's buzz close by. Whether you're winding down, catching up with friends or heading out to enjoy the city, everything you need is right on your doorstep. From Southern Housing New Homes, here to offer clear, honest support and help you find a home that feels right for you.



Horizon - Shared Ownership and Affordable Rent Shared Ownership

Open Market Sale Affordable Rent



The site plan is for indicative purposes only. The details depicted within the site plan are designed to give a general indication and the final layout may vary and should not be relied upon. The site plan, including tenure locations does not form part of any offer, contract, warranty or representation. Please speak to our Sales Team for further information.

Kitchen/Living/Dining

- Contemporary handle-less, soft close kitchen units by Symphony in Indigo Blue
- Each apartment will feature one of the following:
 - Rustic oak worktop & shelves*
 - Rustic oak worktop & arctic marble shelves*
 - Svenborg worktop & shelves*
- White metro tiles fitted behind worktops
- Matt black Blanco Elon XL6 one and a half bowl stainless steel inset sink with matt black Blanco Envoy mixer tap
- Siemens integrated appliances including:
 - single multifunction oven
 - induction hob with touch controls
 - angled chimney extractor hood
- Bosch integrated appliances including:
 - dishwasher
 - fridge freezer
- Siemens freestanding washing machine (located in utility cupboard)
- LED downlights to underside of wall units

Bathroom

- Large format porcelain tiles in dark granite colour to floor
- White metro tiles to wall behind basin and WC and full height around bath
- Silestone vanity worktop with mirror above basin and WC
- Contemporary bath in white with frameless rectangular glass shower screen
- Vitra Matt Black wall mounted rainfall showerhead with built-In Thermostatic Bath/Shower Mixer
- Vitra ORIGIN matt black chrome mixer tap to semi counter top basin

- Ideal Standard back-to-wall WC with soft-close seat, concealed cistern and matt black dual flush plate
- Matt black heated towel radiator
- Shaver socket wall mounted

En Suite†

- Large format porcelain tiles in garda dark grey colour to floor
- White metro tiles to wall & vanity worktop behind basin and WC and full height around shower enclosure‡
- Mira shower tray featuring glass door and Vitra Matt Black wall mounted rainfall showerhead with built-In Thermostatic Bath/Shower Mixer‡
- Vitra ORIGIN matt black chrome mixer tap to semi counter top basin
- Ideal Standard back-to-wall WC with soft-close seat, concealed cistern and matt black dual flush plate
- Matt black heated towel radiator
- Shaver socket wall mounted
- Mirror above basin

Bedroom

- Wool mix carpet in elford twist grey colour
- Built-in wardrobe to main bedroom with sliding door, shelving and hanging rail

Electrical

- LED downlights in white to living/kitchen/dining, bathroom, en suite†, hallway, utility cupboard
- Energy Performance Certificate (EPC) rating is B
- Pendant light to bedroom(s)
- White sockets throughout
- TV/Satellite (pre-wired for Sky§), phone and data points to living room and main bedroom

Interior Finishes

- Karndean oak effect flooring in Brushed Grey to living/kitchen/dining and hallway
- Matt black finish stainless steel ironmongery throughout
- White gloss (for joinery) throughout
- White Ash matt emulsion paint finish to walls throughout
- White Ash matt emulsion paint finish to ceilings throughout
- White blinds fitted to all windows
- **Security & Peace Of Mind**
- Front door with multipoint locking system, security chain and door viewer
- Video/phone entry system
- Mains operated smoke and heat detectors with battery backup plus sprinkler system
- NHBC warranty
- Aluminium-framed double glazed windows

Heating

- Underfloor heating throughout
- Communal heat and power (CHP) system, with Worcester Heat Interface Unit (HIU) and programmable thermostat

Exterior

- Secure residents' cycle store

*The featured worktop and shelves are subject to the plot number. Speak to the sales team for more information.

†En suite to selected units only, refer to floorplans for more information

‡Shower to selected en suites only, refer to floorplans for more information

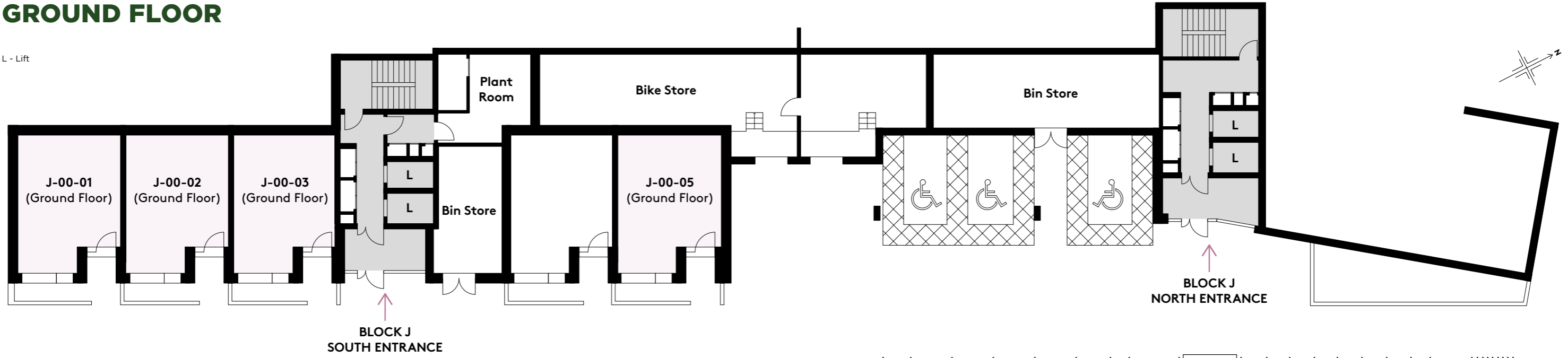
§Subject to a separate subscription

The above specification shown is for general guidance only and is subject to change. Please speak to our sales team for more details.



GROUND FLOOR

L - Lift

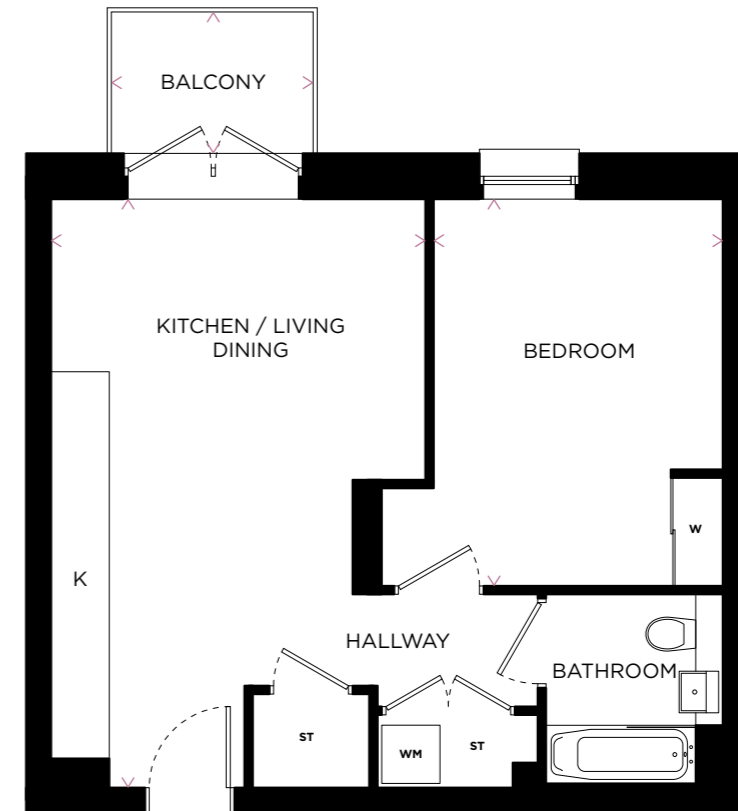


SOUTH APARTMENTS

ONE BEDROOM APARTMENT

Type 09

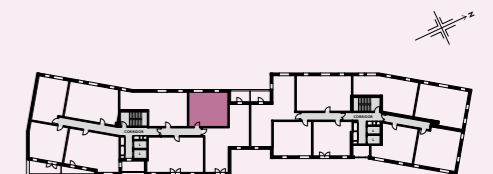
J-02-06 / J-03-06 / J-04-02 / J-05-02



Floor	Plot No	Outdoor Space
9		
8		
7		
6		
5	J-05-02	Balcony
4	J-04-02	Juliet Balcony
3	J-03-06	Balcony
2	J-02-06	N/A
1		
P		

Kitchen / Living / Dining	6.64m x 4.21m	21'7" x 13'8"
Bedroom	4.37m x 3.28m	14'3" x 10'7"
Balcony	2.29m x 1.57m	7'5" x 5'1"
GROSS INTERNAL AREA	50.7 m ²	546 ft ²

K - Kitchen / ST - Store / W - Wardrobe
WM - Washing Machine / L - Lift

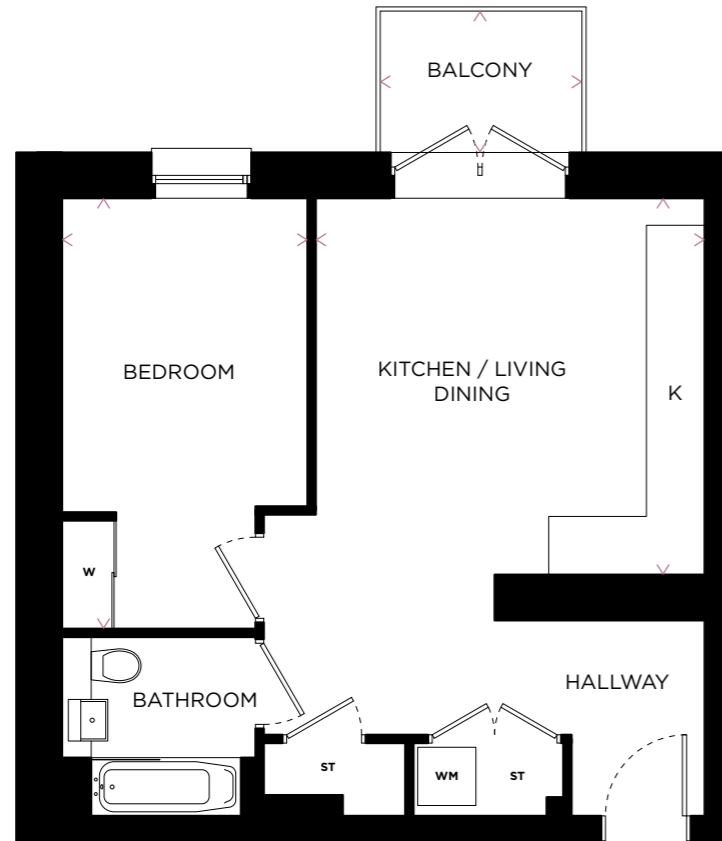


2nd - 5th Floor (2nd Floor Illustrated)

This floor plan is for illustrative purposes and dimensions should only be used as rough guide. External area sizes and locations may differ from those illustrated. Location of windows, doors, bathroom fittings, kitchen units and appliances and wardrobes may differ. Whilst every effort has been taken to ensure the accuracy of the specification, it is for general guidance only and is subject to change. Southern Housing reserves the right to amend the specification as necessary and without notice. Speak to our sales team for more details.

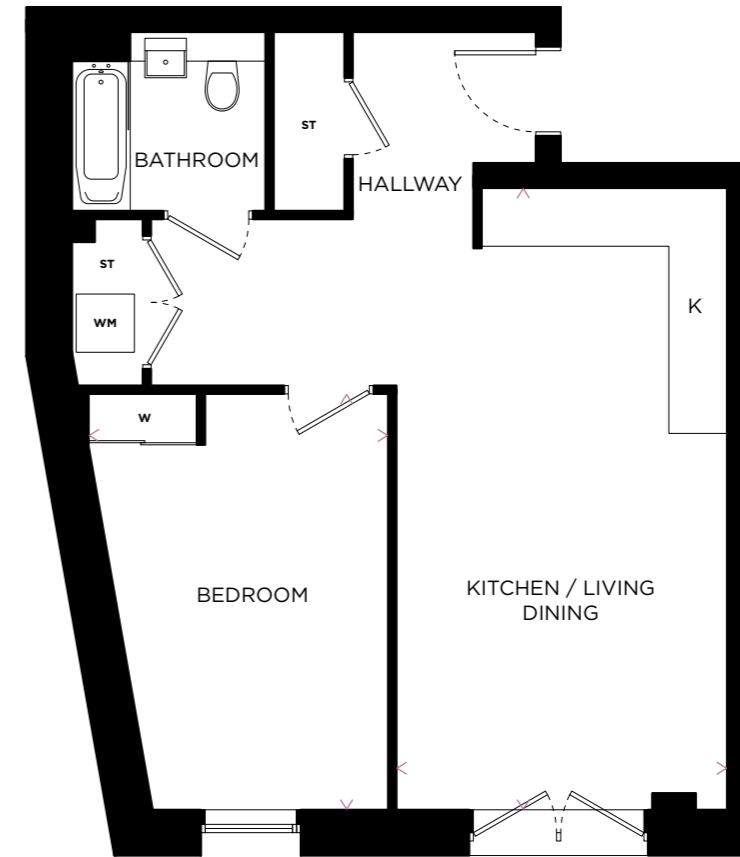
ONE BEDROOM APARTMENT

Type 14
J-03-03



ONE BEDROOM APARTMENT

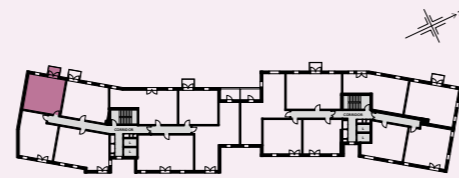
Type 15
J-03-02



Floor	Plot No	Outdoor Space
9		
8		
7		
6		
5		
4		
3	J-03-03	Balcony
2		
1		
P		

Kitchen / Living / Dining	4.40m x 4.24m	14'4" x 13'9"
Bedroom	4.84m x 2.75m	18'8" x 9'0"
Balcony	2.28m x 1.58m	7'5" x 5'1"
GROSS INTERNAL AREA	49.1 m ²	529 ft ²

K - Kitchen / ST - Store / W - Wardrobe
WM - Washing Machine / L - Lift

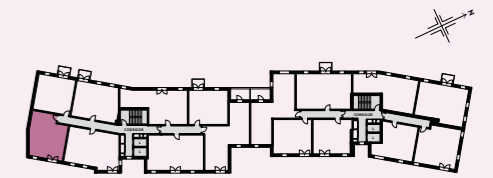


3rd Floor

Floor	Plot No	Outdoor Space
9		
8		
7		
6		
5		
4		
3	J-03-02	Juliet Balcony
2		
1		
P		

Kitchen / Living / Dining	7.00m x 3.71m	22'9" x 12'1"
Bedroom	4.67m x 3.39m	15'3" x 11'1"
GROSS INTERNAL AREA	49 m ²	452 ft ²

K - Kitchen / ST - Store / W - Wardrobe
WM - Washing Machine / L - Lift



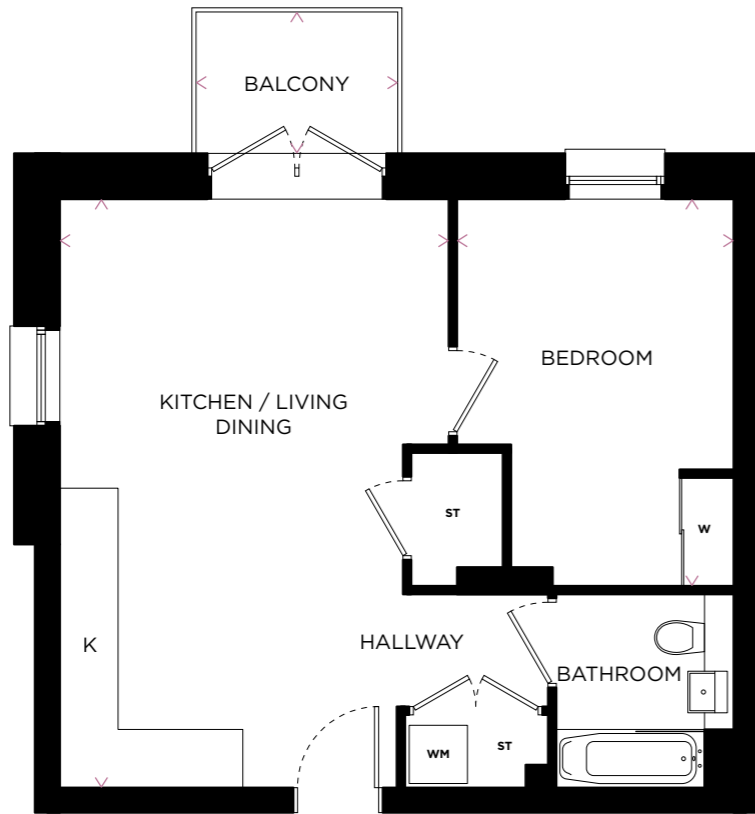
3rd Floor

This floor plan is for illustrative purposes and dimensions should only be used as rough guide. External area sizes and locations may differ from those illustrated. Location of windows, doors, bathroom fittings, kitchen units and appliances and wardrobes may differ. Whilst every effort has been taken to ensure the accuracy of the specification, it is for general guidance only and is subject to change. Southern Housing reserves the right to amend the specification as necessary and without notice. Speak to our sales team for more details.

This floor plan is for illustrative purposes and dimensions should only be used as rough guide. External area sizes and locations may differ from those illustrated. Location of windows, doors, bathroom fittings, kitchen units and appliances and wardrobes may differ. Whilst every effort has been taken to ensure the accuracy of the specification, it is for general guidance only and is subject to change. Southern Housing reserves the right to amend the specification as necessary and without notice. Speak to our sales team for more details.

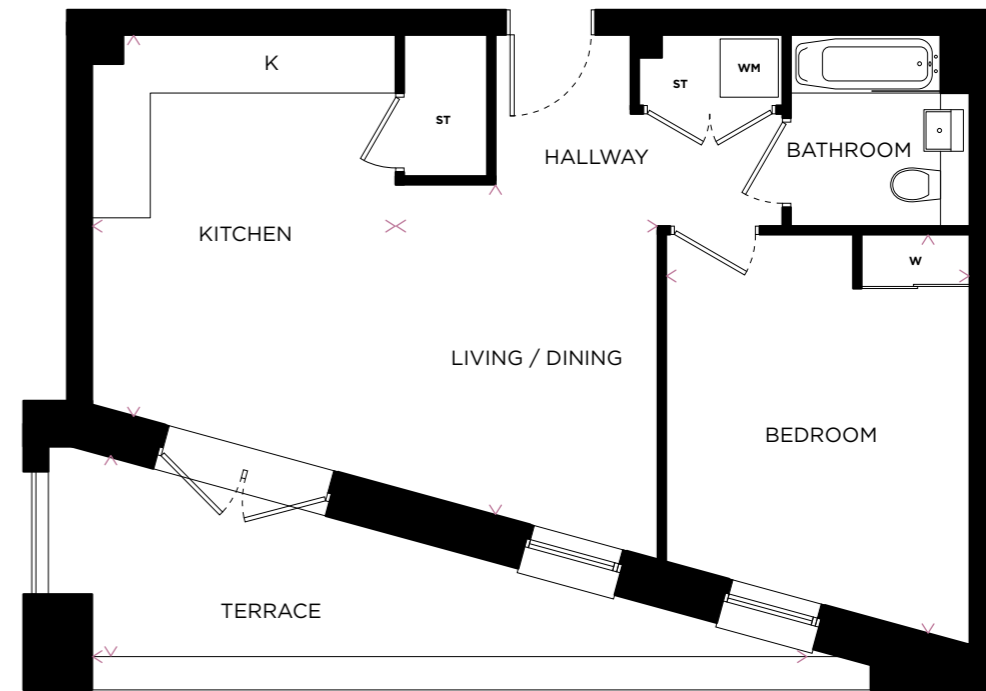
ONE BEDROOM APARTMENT

Type 18
J-04-01 / J-05-01



ONE BEDROOM APARTMENT

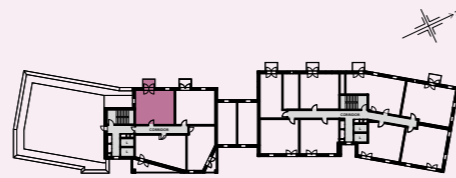
Type 19
J-04-04



Floor	Plot No	Outdoor Space
9		
8		
7		
6		
5	J-05-01	Juliet Balcony
4	J-04-01	Balcony
3		
2		
1		
P		

Kitchen / Living / Dining	6.64m x 4.40m	21'7" x 14'4"
Bedroom	4.37m x 3.13m	14'3" x 10'2"
Balcony	2.29m x 1.57m	7'5" x 5'1"
GROSS INTERNAL AREA	50.6 m²	545 ft²

K - Kitchen / ST - Store / W - Wardrobe
WM - Washing Machine / L - Lift



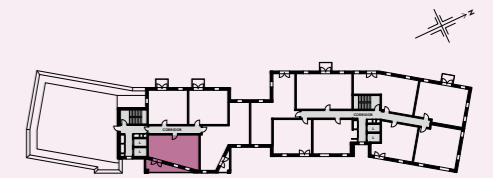
4th & 5th Floor (4th Floor Illustrated)

This floor plan is for illustrative purposes and dimensions should only be used as rough guide. External area sizes and locations may differ from those illustrated. Location of windows, doors, bathroom fittings, kitchen units and appliances and wardrobes may differ. Whilst every effort has been taken to ensure the accuracy of the specification, it is for general guidance only and is subject to change. Southern Housing reserves the right to amend the specification as necessary and without notice. Speak to our sales team for more details.

Floor	Plot No	Outdoor Space
9		
8		
7		
6		
5		
4	J-04-04	Terrace
3		
2		
1		
P		

Kitchen	4.15m x 3.34m	13'6" x 10'9"
Living / Dining	3.67m x 2.95m	12'0" x 9'6"
Bedroom	4.45m x 3.41m	14'5" x 11'1"
Terrace	8.1m x 2.27m	26'5" x 7'4"
GROSS INTERNAL AREA	54.3 m²	584 ft²

K - Kitchen / ST - Store / W - Wardrobe
WM - Washing Machine / L - Lift

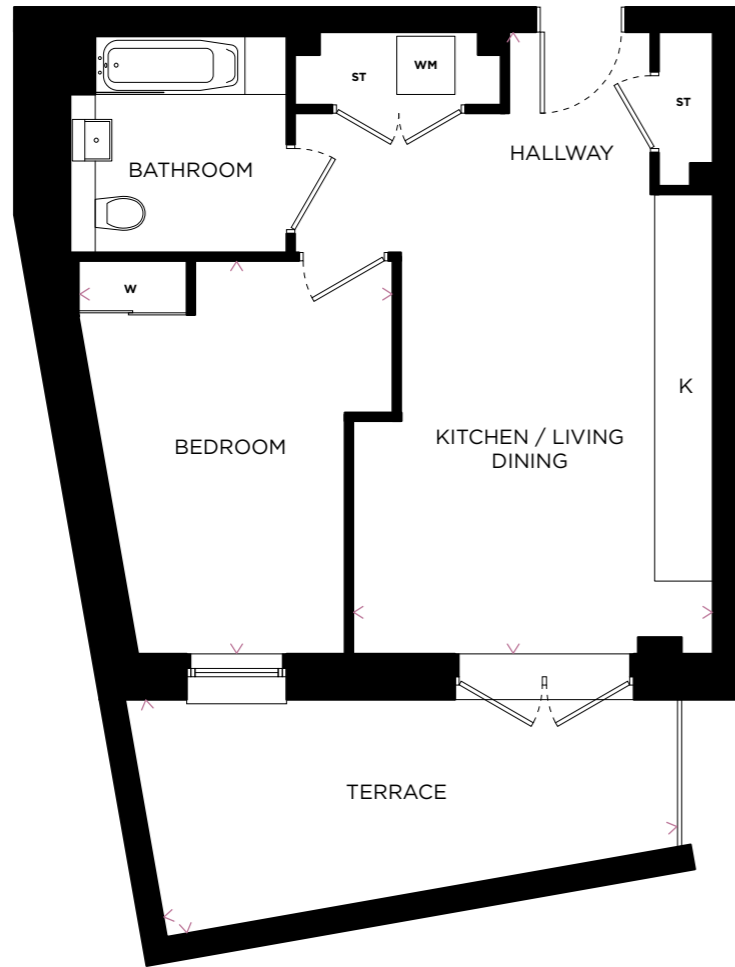


4th Floor

This floor plan is for illustrative purposes and dimensions should only be used as rough guide. External area sizes and locations may differ from those illustrated. Location of windows, doors, bathroom fittings, kitchen units and appliances and wardrobes may differ. Whilst every effort has been taken to ensure the accuracy of the specification, it is for general guidance only and is subject to change. Southern Housing reserves the right to amend the specification as necessary and without notice. Speak to our sales team for more details.

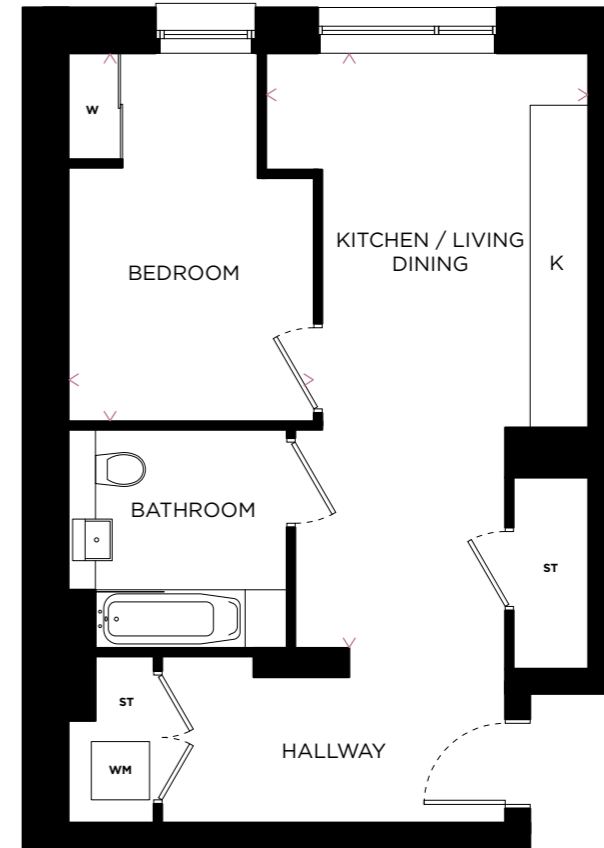
ONE BEDROOM APARTMENT

Type 34
J-02-02



ONE BEDROOM APARTMENT

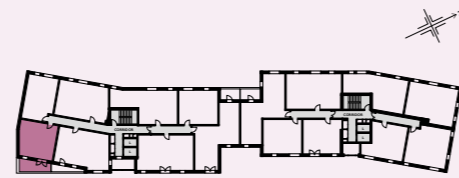
Type 35
J-02-03



Floor	Plot No	Outdoor Space
9		
8		
7		
6		
5		
4		
3		
2	J-02-02	Terrace
1		
P		

Kitchen / Living / Dining	7.00m x 4.05m	22'9" x 13'2"
Bedroom	4.42m x 3.54m	14'5" x 11'6"
Terrace	5.9m x 2.60m	19'3" x 8'5"
GROSS INTERNAL AREA	49 m ²	527 ft ²

K - Kitchen / ST - Store / W - Wardrobe
WM - Washing Machine / L - Lift

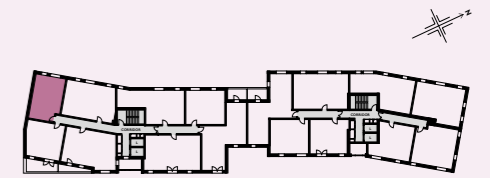


2nd Floor

Floor	Plot No	Outdoor Space
9		
8		
7		
6		
5		
4		
3		
2	J-02-03	N/A
1		
P		

Kitchen / Living / Dining	6.74m x 3.63m	22'1" x 11'9"
Bedroom	4.16m x 2.75m	16'6" x 9'0"
GROSS INTERNAL AREA	49.1 m ²	529 ft ²

K - Kitchen / ST - Store / W - Wardrobe
WM - Washing Machine / L - Lift



2nd Floor

This floor plan is for illustrative purposes and dimensions should only be used as rough guide. External area sizes and locations may differ from those illustrated. Location of windows, doors, bathroom fittings, kitchen units and appliances and wardrobes may differ. Whilst every effort has been taken to ensure the accuracy of the specification, it is for general guidance only and is subject to change. Southern Housing reserves the right to amend the specification as necessary and without notice. Speak to our sales team for more details.

This floor plan is for illustrative purposes and dimensions should only be used as rough guide. External area sizes and locations may differ from those illustrated. Location of windows, doors, bathroom fittings, kitchen units and appliances and wardrobes may differ. Whilst every effort has been taken to ensure the accuracy of the specification, it is for general guidance only and is subject to change. Southern Housing reserves the right to amend the specification as necessary and without notice. Speak to our sales team for more details.

SOUTHERN HOUSING

new homes

SHARED OWNERSHIP

Now that you have found your dream home you're probably asking, "Is Shared Ownership right for me?" At Southern Housing New Homes, we know that a new home is one of the biggest purchases you will ever make, and Shared Ownership helps make this a reality.

HOW DOES IT WORK?

You'll start by buying a share of your home that's between 25% and 75% of the full value, using a combination of a mortgage and a deposit between 5-10%. You will then pay a subsidised rent on the share you don't buy. In the future, if your circumstances change and you'd like to, you can purchase more shares in your home, right up to 100%. As your share increases, the rent you pay decreases.

BEFORE PROCEEDING, YOU MUST CONSIDER THE FOLLOWING:

- Your total household income must be £80,000 a year or less.
- These apartments are leasehold.
- A service charge is payable to contribute to the management and maintenance of the development. This is reviewed annually and may increase over time. Service charges showed on the price list are only indicative and may change.

Speak to your Sales Executive for more information and to find out if this home could be the right fit for you.

AT SOUTHERN HOUSING NEW HOMES WE KNOW HOW IMPORTANT IT IS TO FIND THE PERFECT HOME

Our mission is to help you do just that by providing the best quality, affordable homes, while creating communities that people love. As an organisation we're one of the largest housing providers in the UK with over 80,000 homes across London, the South East, the Isle of Wight and the Midlands, giving over 167,000 people somewhere to call their own.

Within our Southern Housing New Homes team, we provide homes to suit families of all sizes, through Shared Ownership, London Living Rent and Open Market Sale.

Read more about who we are and what we do as a housing association at:
southernhousing.org.uk



WANT MORE INFORMATION? YOU CAN:

GIVE US A CALL: 0333 210 0437

VISIT OUR WEBSITE: SHNEWHOMES.CO.UK/HOMEX



**SOUTHERN
HOUSING**
new homes