

RATHBONE
TERRACE





4–5 Rathbone Terrace
6–7 Local Area
8–9 Location Map
10–11 Connectivity
12–13 Development Plan
14–15 Specification
16–24 Floorplans
25 About Red Loft

RATHBONE
TERRACE



Set within the north-west corner of the London Borough of Ealing, Rathbone Terrace is a brand new collection of thoughtfully designed four bedroom mews townhouses.

Tucked between established neighbourhood streets and open greenbelt land, Rathbone Terrace offers a rare sense of balance. Here, peaceful residential living sits alongside excellent connections into central London, with Northolt station and the A40 both close by for easy commuting.

Families will appreciate the development's dedicated children's play area and landscaped amenity spaces – places designed to relax, meet neighbours and enjoy time outdoors. Whether it's a morning coffee in the courtyard, an afternoon at the park or a quick journey into the city, life here feels effortlessly well connected.

Northolt itself has long been known for its village origins, open spaces and strong sense of community. Today, it remains one of west London's most practical and welcoming locations – where everyday essentials, schools, leisure facilities and transport links are all close to home.



A CONNECTED
COMMUNITY,
ROOTED IN
GREEN SPACE

OUT & ABOUT

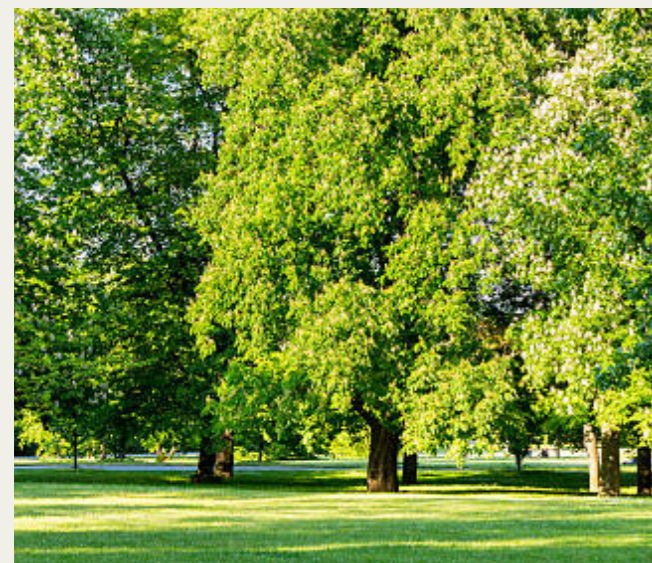
Just moments from home, Northala Fields is one of the area's most distinctive outdoor destinations. Its iconic landscaped hills, lakes and walking trails create the perfect setting for morning runs, weekend strolls and family adventures.



For those who enjoy an active lifestyle, local gyms and fitness centres are within easy reach, while golfers can head to **Stockley Park Golf Club** for a round on one of west London's best-known courses.

Meanwhile, **Yeading Brook Meadows** offers scenic walking and cycling routes through peaceful natural surroundings.

Even closer to home, nearby parks including **Belvue Park**, **Down Way Park** and **Medlar Park** provide playgrounds, sports space and room to relax.

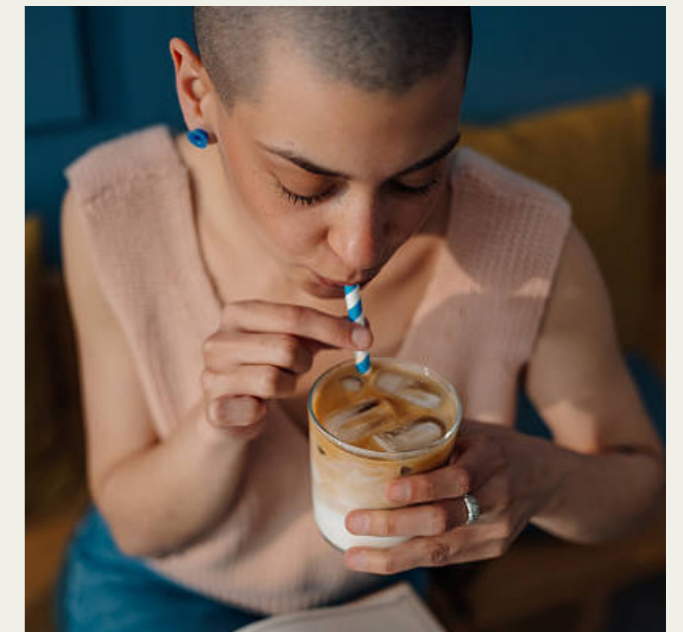


Everyday essentials are close at hand, with supermarkets, convenience stores and shopping parades nearby, alongside **Lombardy Retail Park** for larger stores and household names.

For a broader retail and leisure offer, **Ealing Broadway**, **Wembley** and **Westfield London** are all within easy reach.

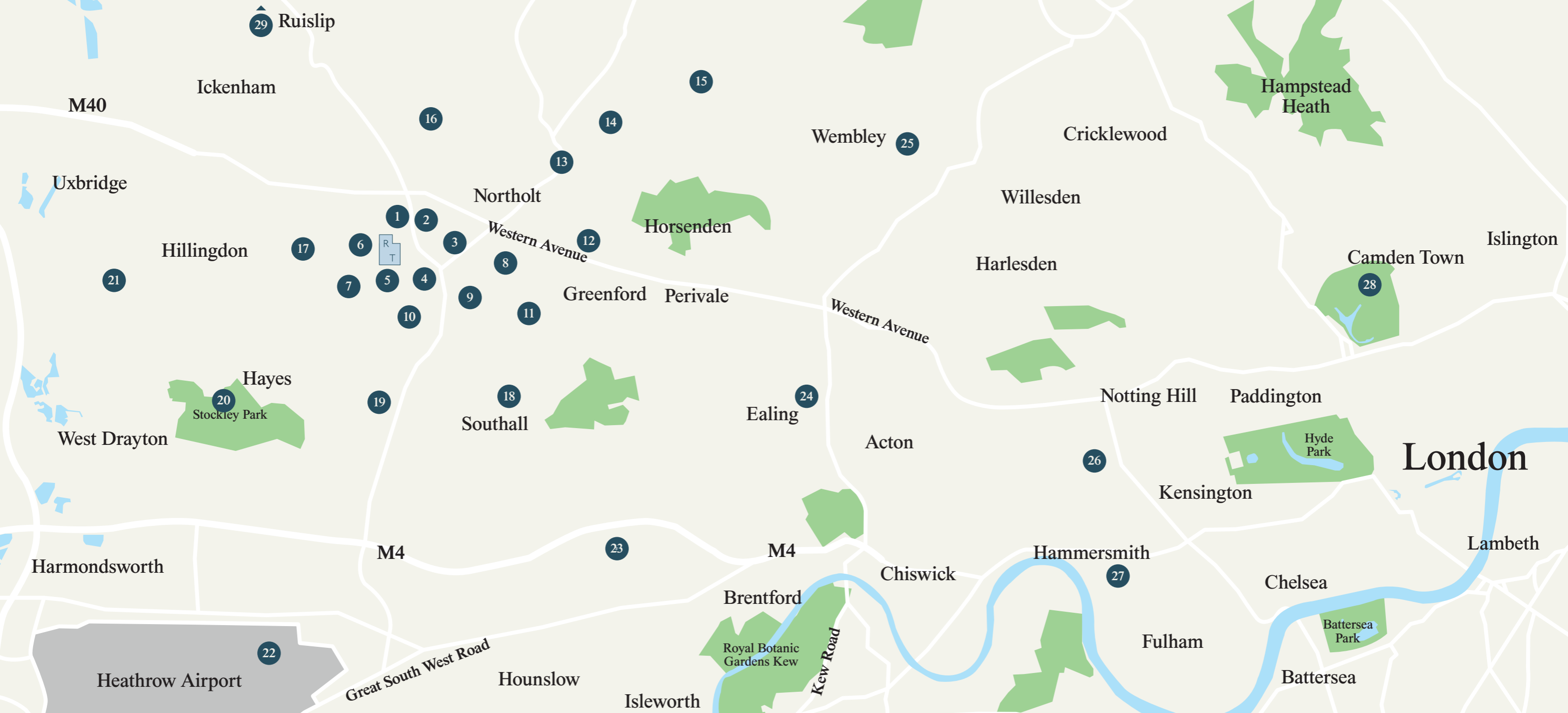
When it's time to eat out or meet friends, the area offers a mix of cafés, takeaways and independent local favourites, giving Northolt its warm and well-established neighbourhood character.

At Rathbone Terrace, everything you need is close to home – with space to breathe and London always within reach.



IN NORTHOLT

Life at Rathbone Terrace is shaped by open space, everyday convenience and a welcoming west London community feel.



THE BEST OF WEST LONDON

- | | | |
|--|-----------------------------------|--|
| 1. The Inspiration Golf Club | 10. Millenium Tandoori Restaurant | 21. Brunel University of London |
| 2. West London Golf Centre | 11. Greenford High School | 22. Heathrow Airport |
| 3. Hyderabad Biryani / Tesco Express | 12. Dunelm | 23. National Trust - Osterley Park and House |
| 4. The White Hart Café | 13. Northolt Park | 24. Ealing Broadway |
| 5. Downe Manor primary school | 14. Northolt Leisure Centre | 25. Wembley Stadium |
| 6. St. Raphael's Catholic Primary School | 15. Northwick Park Hospital | 26. Westfield London |
| 7. Yeading Brook Meadows | 16. Cineworld South Ruislip | 27. Eventim Apollo |
| 8. Northala Fields | 17. Charville Academy | 28. London Zoo |
| 9. Little Tigers Football Academy (LTFA) | 18. Southall Broadway | 29. Ruislip Lido Beach |
| | 19. Lombardy Retail Park | |
| | 20. Stockley Park Golf Club | |



EVERYDAY CONNECTED

Rathbone Terrace is well placed for day-to-day travel, with convenient road links and local transport connections providing access across west London and beyond.

START



3
MIN

3
MIN

10
MIN

15
MIN

Rathbone Terrace

Local Convenience Store

Downe Manor Primary School/
St. Raphael's Catholic Primary School

The White Hart Café

West End Doctors Surgery

START



9
MIN

12
MIN

15
MIN

32
MIN

Rathbone Terrace

Northala Fields

Belvue Park

Northolt Underground Station

Ealing Broadway

START



10
MIN

18
MIN

13
MIN

31
MIN

Kingshill Avenue (stop K)*,
Dilston Close (stop L)**

Northolt Underground Station

South Harrow

Lombardy Retail Park

Heathrow Central Bus Station

START



19
MIN

21
MIN

28
MIN

29
MIN

Northolt Underground Station (Central Line)

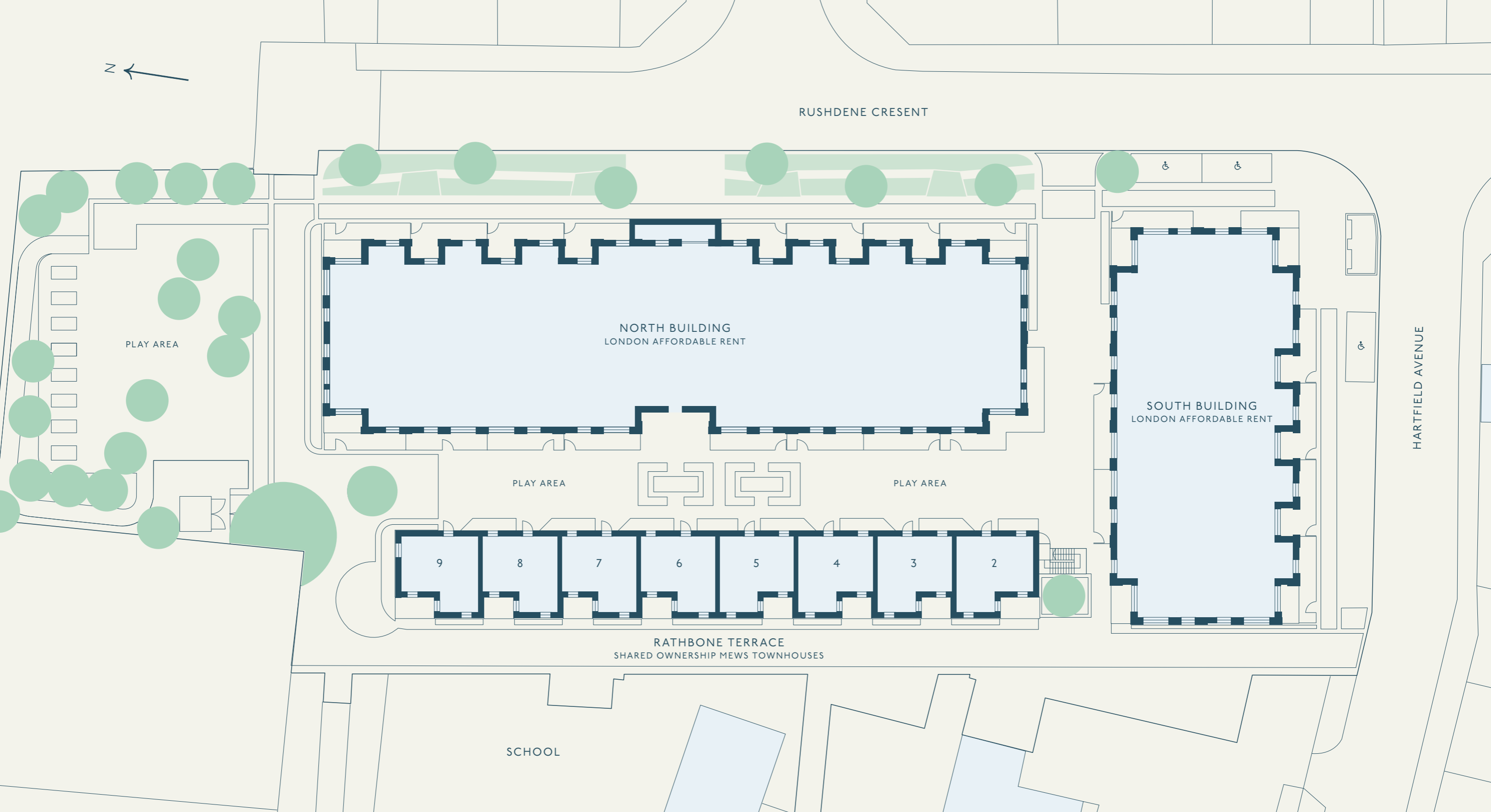
Westfield London White City

Notting Hill

Bond Street Station

Oxford Circus Station

*11 MIN WALK FROM RATHBONE TERRACE. **13 MIN WALK FROM RATHBONE TERRACE. ALL TIMINGS ARE TAKEN FROM GOOGLE MAPS.



A THOUGHTFULLY DESIGNED
NEW NEIGHBOURHOOD

Sometimes it's the details that make all the difference. At Rathbone Terrace, interiors have been carefully selected to combine contemporary style with everyday practical living.

Modern kitchens by Howdens feature sleek cabinetry, marble-effect worktops and a suite of integrated appliances including an induction hob, oven, dishwasher and fridge freezer.

Bathrooms and shower rooms are finished with elegant fittings, large-format tiling and Ideal Standard sanitaryware, while chrome heated towel rails add a practical finishing touch.

Throughout the homes, soft carpeting to bedrooms and living spaces creates warmth underfoot, with durable tiled finishes to kitchens and ground floor hallways.

With thoughtful storage, modern connectivity and finishes designed to last, every home at Rathbone Terrace is ready to enjoy from day one.



Kitchen

- Howdens contemporary fitted kitchen
- White super matt wall cabinets
- Marble-effect square edged worktops
- Franke 1.5 bowl stainless steel sink
- Chrome Lamona mixer tap
- Electrolux induction hob
- Electrolux single oven
- Neff telescopic extractor hood
- Integrated dishwasher
- Integrated fridge freezer
- Integrated pull-out recycling bin

Bathroom / En Suite

- Ideal Standard sanitaryware
- Semi-countertop basin with chrome mixer tap
- Thermostatic shower fittings
- Merlyn bath screen / shower doors
- Large-format porcelain wall tiling
- Chrome heated towel rail

Flooring

- Carpet to bedrooms
- Carpet to living room
- Tiled hallway and kitchen
- Tiled bathrooms and en suite

General

- EPC rating of B
- NHBC 10 year warranty
- Neutral décor throughout
- TV points to living room and bedrooms
- BT points throughout
- Contemporary ironmongery
- Double glazed windows

External / Communal

- Private roof terrace to all homes
- Landscaped communal areas
- Dedicated children's play space



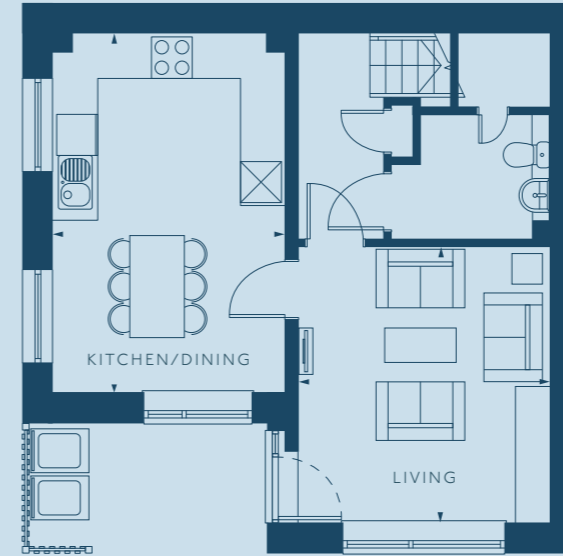
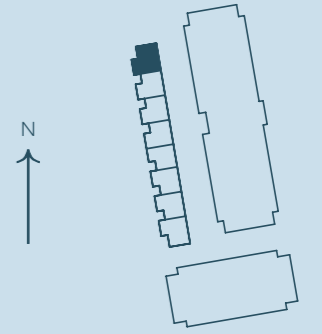
Computer-generated images are an artistic representation and for illustrative purposes only.

MADE FOR MODERN LIVING

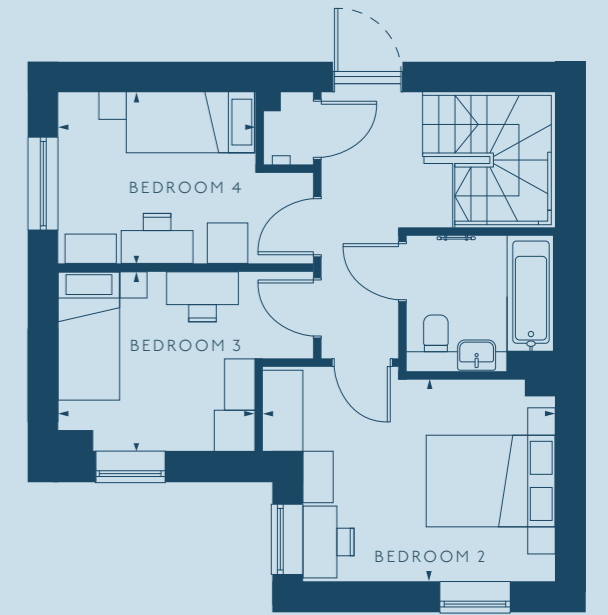
FLOOR PLANS

Floor plans

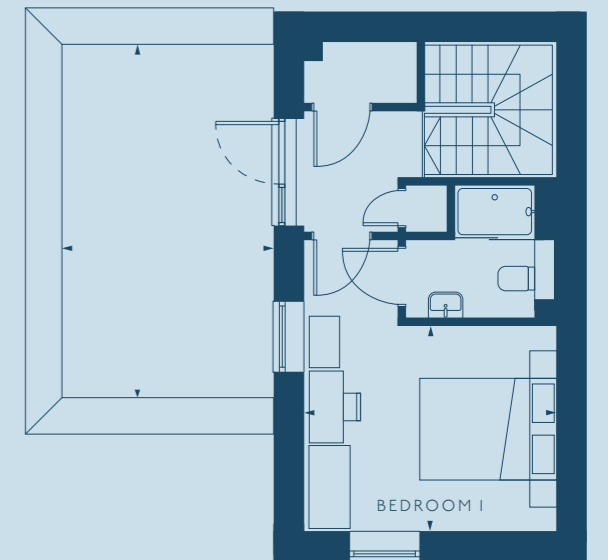
TOWNHOUSE NINE



GROUND FLOOR



FIRST FLOOR



SECOND FLOOR

GROUND FLOOR	METRIC	IMPERIAL
Kitchen / Dining	3.42m × 5.28m	11'2" × 17'4"
Living	3.7m × 4.06m	12'2" × 13'4"
FIRST FLOOR	METRIC	IMPERIAL
Bedroom 2	4.31m × 2.97m	14'2" × 9'9"
Bedroom 3	2.9m × 2.65m	9'6" × 8'8"
Bedroom 4	2.92m × 2.53m	9'7" × 8'4"
SECOND FLOOR	METRIC	IMPERIAL
Bedroom 1	3.7m × 3.03m	12'2" × 9'11"
GIA	117.9 m ²	1,268.6 ft ²

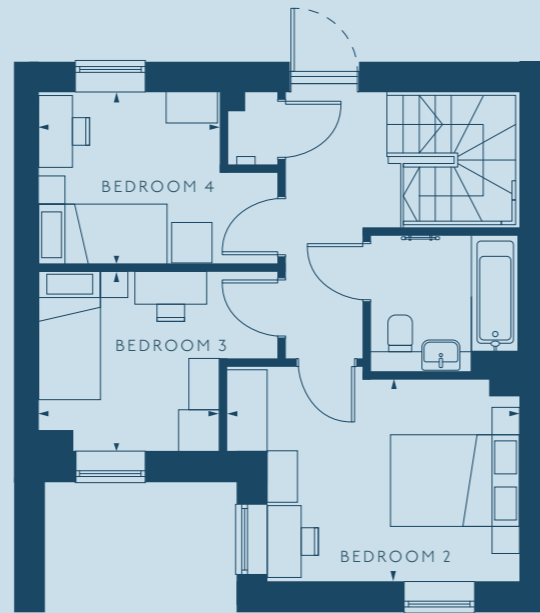
Floor plans represent typical layouts of the design of the apartments. They are not shown to scale. All measurements and areas may vary within a tolerance of 5%. Plot specification, internal and external finishes, dimensions and differences to plots should be checked with the Sales Team before reservation.

Floor plans

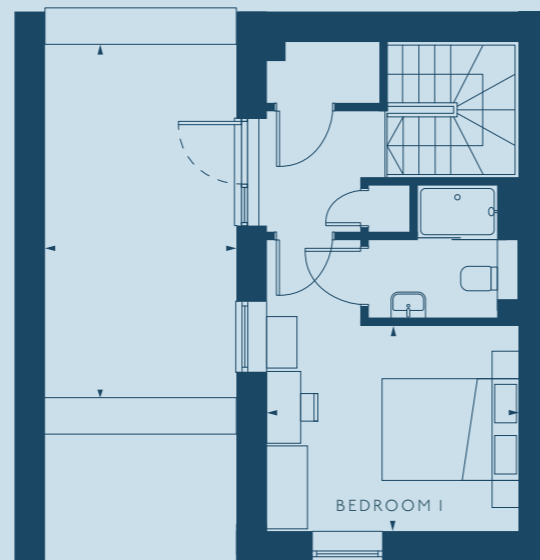
TOWNHOUSE EIGHT



GROUND FLOOR



FIRST FLOOR



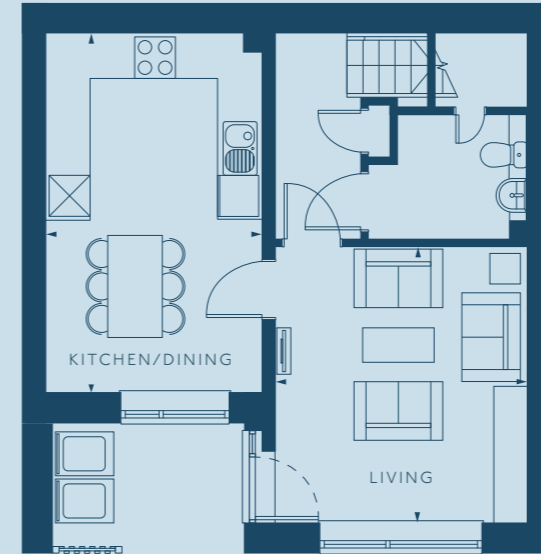
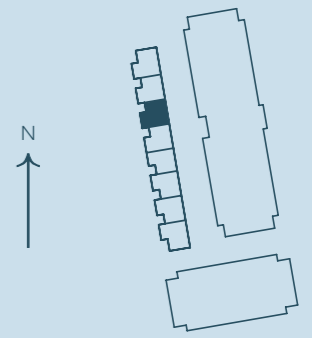
SECOND FLOOR

GROUND FLOOR	METRIC	IMPERIAL
Kitchen / Dining	3.18m × 5.28m	10'5" × 17'4"
Living	3.7m × 4.06m	12'2" × 13'4"
FIRST FLOOR	METRIC	IMPERIAL
Bedroom 2	4.31m × 2.97m	14'2" × 9'9"
Bedroom 3	2.66m × 2.65m	8'9" × 8'8"
Bedroom 4	2.68m × 2.53m	8'9" × 8'4"
SECOND FLOOR	METRIC	IMPERIAL
Bedroom 1	3.7m × 3.03m	12'2" × 9'11"
GIA	115.4 m ²	1,241.7 ft ²

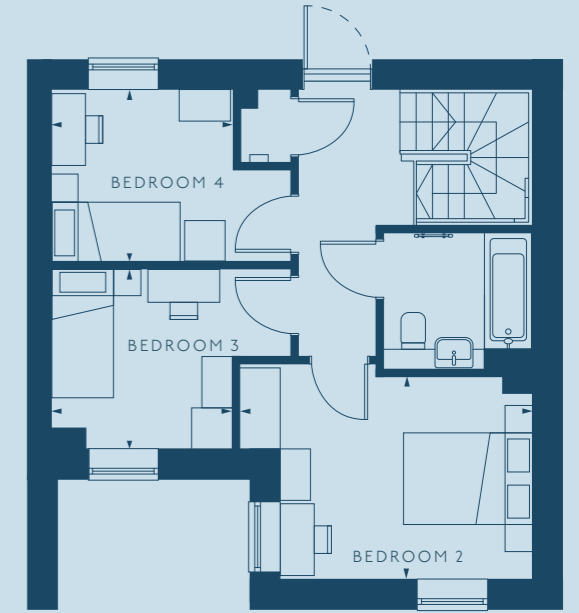
Floor plans represent typical layouts of the design of the apartments. They are not shown to scale. All measurements and areas may vary within a tolerance of 5%. Plot specification, internal and external finishes, dimensions and differences to plots should be checked with the Sales Team before reservation.

Floor plans

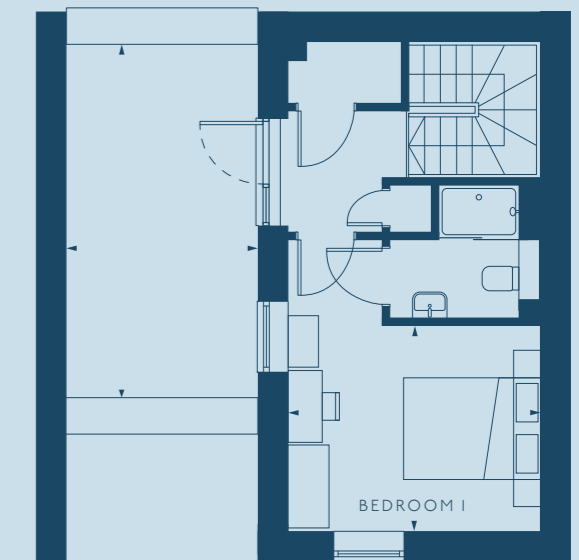
TOWNHOUSE SEVEN



GROUND FLOOR



FIRST FLOOR



SECOND FLOOR

GROUND FLOOR	METRIC	IMPERIAL
Kitchen / Dining	3.18m × 5.28m	10'5" × 17'4"
Living	3.7m × 4.06m	12'2" × 13'4"
FIRST FLOOR	METRIC	IMPERIAL
Bedroom 2	4.31m × 2.97m	14'2" × 9'9"
Bedroom 3	2.66m × 2.65m	8'9" × 8'8"
Bedroom 4	2.68m × 2.53m	8'9" × 8'4"
SECOND FLOOR	METRIC	IMPERIAL
Bedroom 1	3.7m × 3.03m	12'2" × 9'11"
GIA	115.4 m ²	1,241.7 ft ²

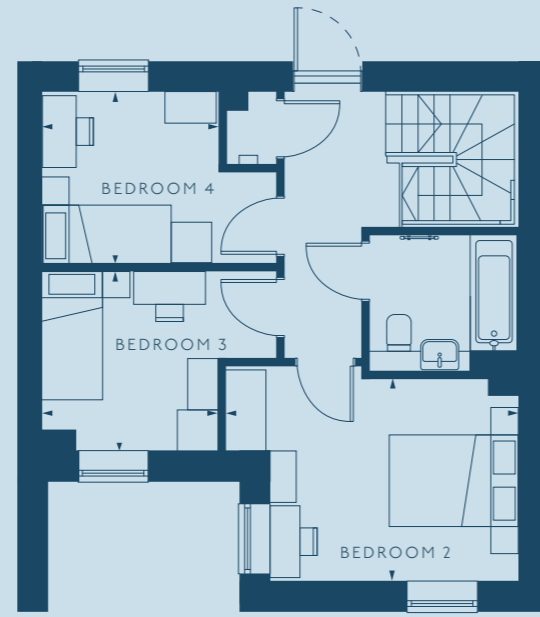
Floor plans represent typical layouts of the design of the apartments. They are not shown to scale. All measurements and areas may vary within a tolerance of 5%. Plot specification, internal and external finishes, dimensions and differences to plots should be checked with the Sales Team before reservation.

Floor plans

TOWNHOUSE SIX

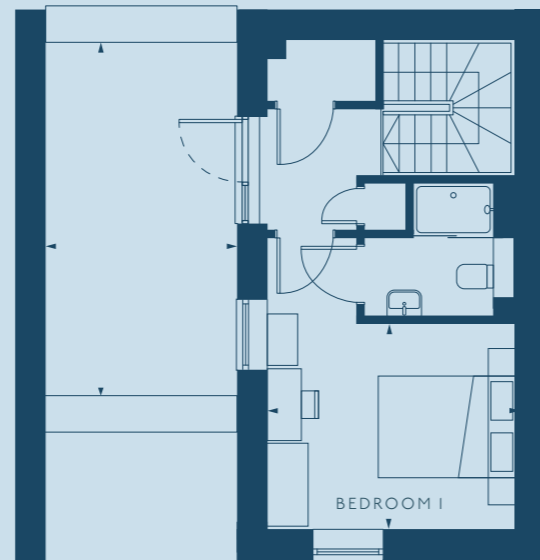


GROUND FLOOR



FIRST FLOOR

GROUND FLOOR	METRIC	IMPERIAL
Kitchen / Dining	3.18m × 5.28m	10'5" × 17'4"
Living	3.64m × 4.06m	11'11" × 13'4"
FIRST FLOOR	METRIC	IMPERIAL
Bedroom 2	4.31m × 2.97m	14'2" × 9'9"
Bedroom 3	2.65m × 2.6m	8'8" × 8'6"
Bedroom 4	2.62m × 2.53m	8'7" × 8'4"
SECOND FLOOR	METRIC	IMPERIAL
Bedroom 1	3.64m × 3.03m	11'11" × 9'11"
GIA	114 m ²	1,227.2 ft ²

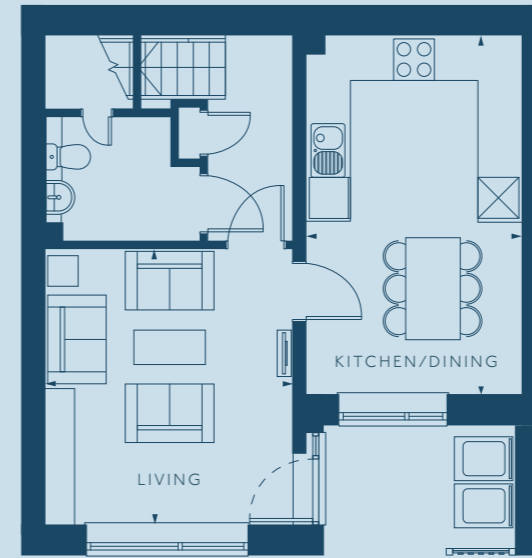
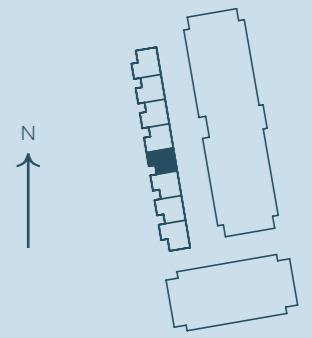


SECOND FLOOR

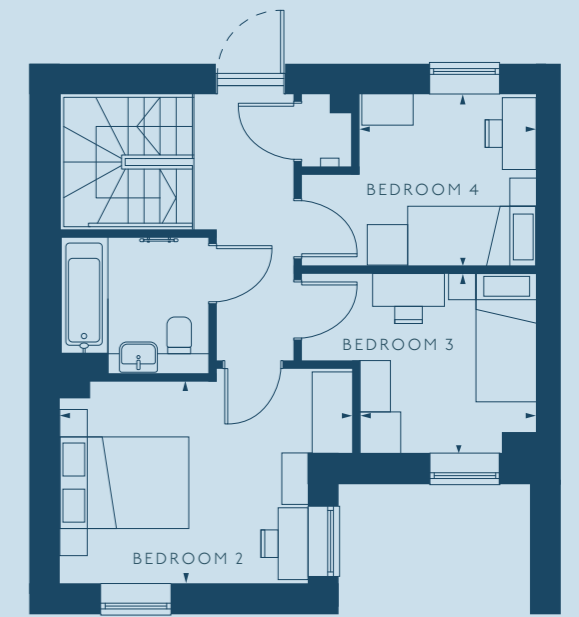
Floor plans represent typical layouts of the design of the apartments. They are not shown to scale. All measurements and areas may vary within a tolerance of 5%. Plot specification, internal and external finishes, dimensions and differences to plots should be checked with the Sales Team before reservation.

Floor plans

TOWNHOUSE FIVE

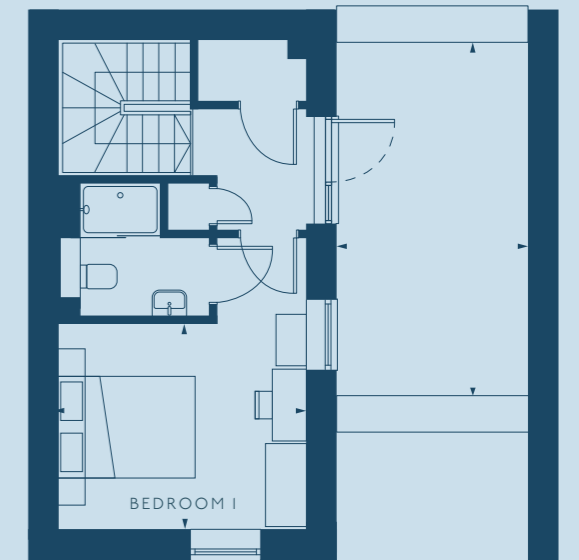


GROUND FLOOR



FIRST FLOOR

GROUND FLOOR	METRIC	IMPERIAL
Kitchen / Dining	3.18m × 5.28m	10'5" × 17'4"
Living	3.64m × 4.06m	11'11" × 13'4"
FIRST FLOOR	METRIC	IMPERIAL
Bedroom 2	4.31m × 2.97m	14'2" × 9'9"
Bedroom 3	2.65m × 2.6m	8'8" × 8'6"
Bedroom 4	2.62m × 2.53m	8'7" × 8'4"
SECOND FLOOR	METRIC	IMPERIAL
Bedroom 1	3.64m × 3.03m	11'11" × 9'11"
GIA	114 m ²	1,227.2 ft ²

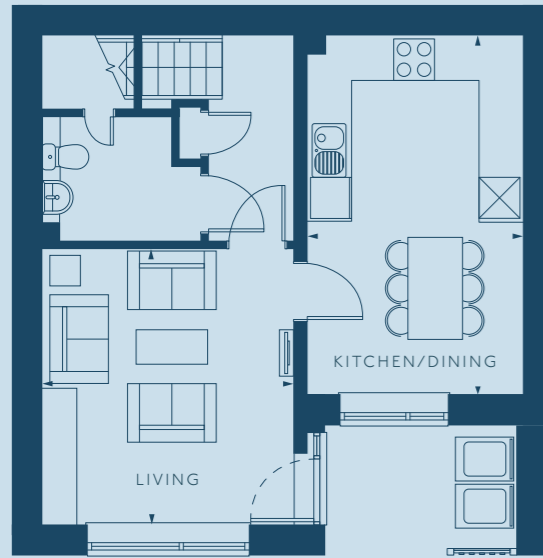


SECOND FLOOR

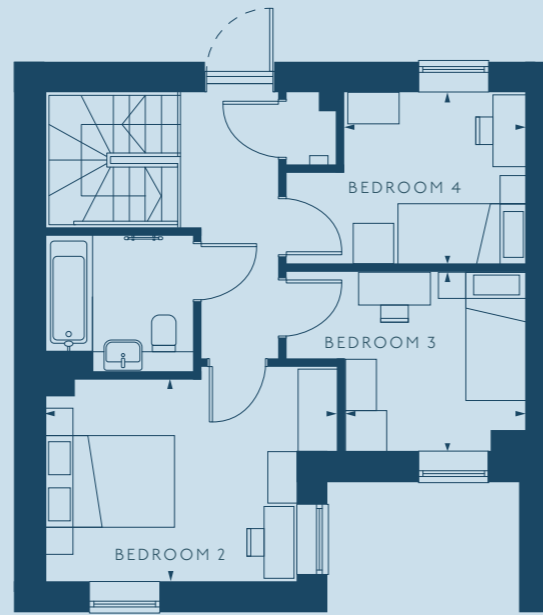
Floor plans represent typical layouts of the design of the apartments. They are not shown to scale. All measurements and areas may vary within a tolerance of 5%. Plot specification, internal and external finishes, dimensions and differences to plots should be checked with the Sales Team before reservation.

Floor plans

TOWNHOUSE FOUR

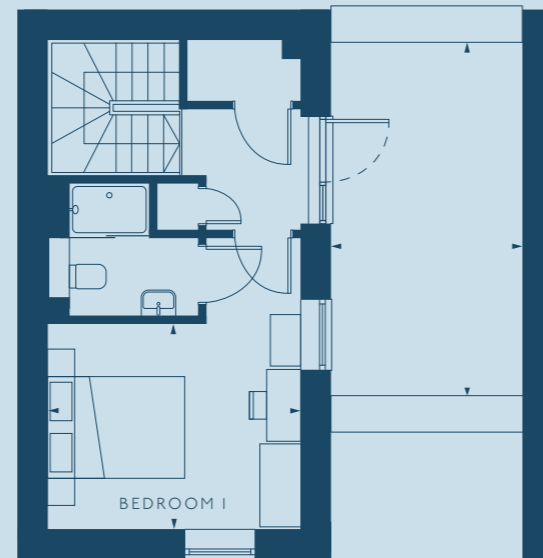


GROUND FLOOR



FIRST FLOOR

GROUND FLOOR	METRIC	IMPERIAL
Kitchen / Dining	3.18m × 5.28m	10'5" × 17'4"
Living	3.7m × 4.06m	12'2" × 13'4"
FIRST FLOOR	METRIC	IMPERIAL
Bedroom 2	4.31m × 2.97m	14'2" × 9'9"
Bedroom 3	2.66m × 2.65m	8'9" × 8'8"
Bedroom 4	2.68m × 2.53m	8'9" × 8'4"
SECOND FLOOR	METRIC	IMPERIAL
Bedroom 1	3.7m × 3.03m	12'2" × 9'11"
GIA	115.4 m ²	1,241.7 ft ²

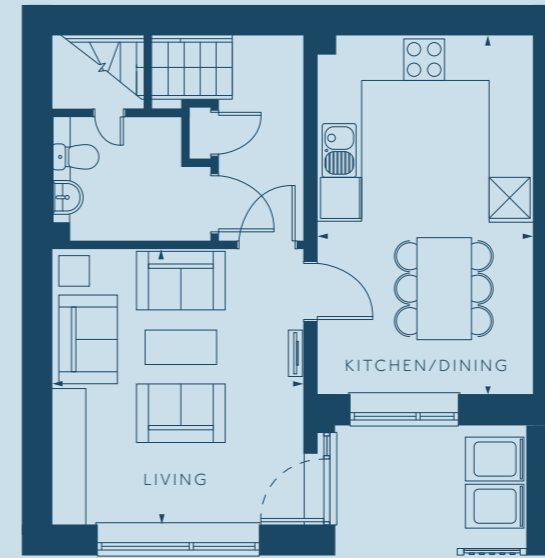
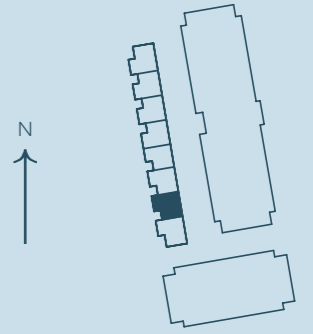


SECOND FLOOR

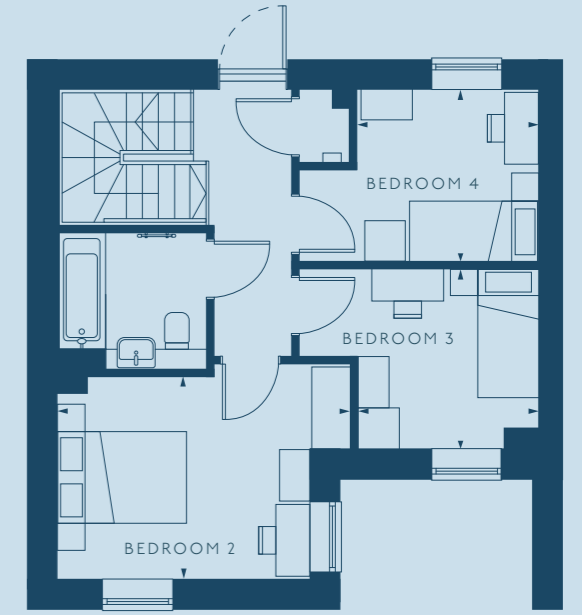
Floor plans represent typical layouts of the design of the apartments. They are not shown to scale. All measurements and areas may vary within a tolerance of 5%. Plot specification, internal and external finishes, dimensions and differences to plots should be checked with the Sales Team before reservation.

Floor plans

TOWNHOUSE THREE

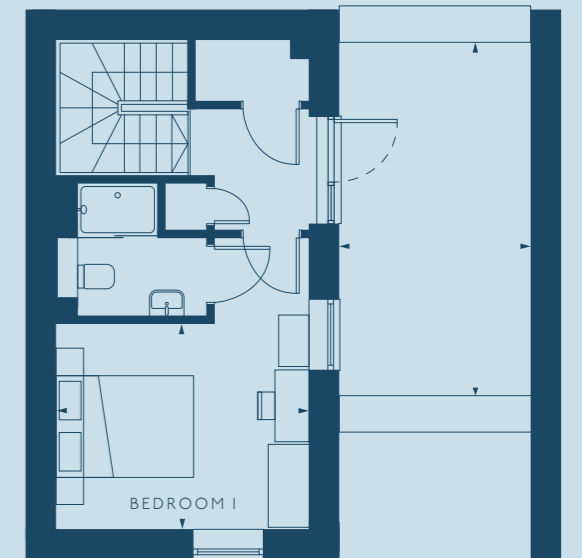


GROUND FLOOR



FIRST FLOOR

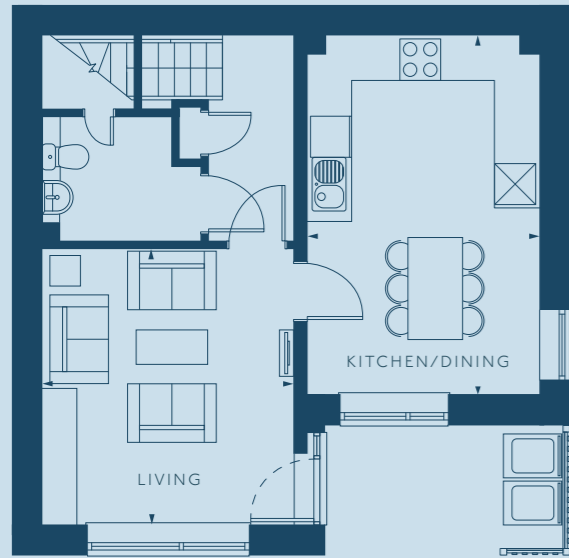
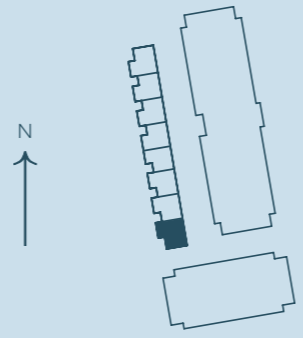
GROUND FLOOR	METRIC	IMPERIAL
Kitchen / Dining	3.18m × 5.28m	10'5" × 17'4"
Living	3.7m × 4.06m	12'2" × 13'4"
FIRST FLOOR	METRIC	IMPERIAL
Bedroom 2	4.31m × 2.97m	14'2" × 9'9"
Bedroom 3	2.66m × 2.65m	8'9" × 8'8"
Bedroom 4	2.68m × 2.53m	8'9" × 8'4"
SECOND FLOOR	METRIC	IMPERIAL
Bedroom 1	3.7m × 3.03m	12'2" × 9'11"
GIA	115.4 m ²	1,241.7 ft ²



SECOND FLOOR

Floor plans represent typical layouts of the design of the apartments. They are not shown to scale. All measurements and areas may vary within a tolerance of 5%. Plot specification, internal and external finishes, dimensions and differences to plots should be checked with the Sales Team before reservation.

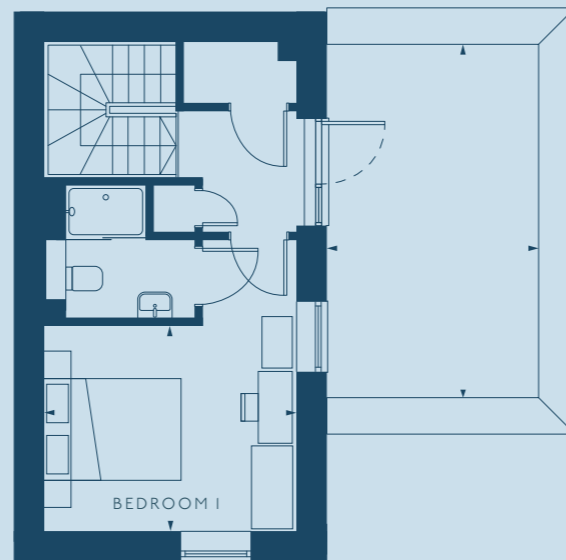
TOWNHOUSE TWO



GROUND FLOOR



FIRST FLOOR



SECOND FLOOR

GROUND FLOOR	METRIC	IMPERIAL
Kitchen / Dining	3.42m × 5.28m	11'2" × 17'4"
Living	3.7m × 4.06m	12'2" × 13'4"
FIRST FLOOR	METRIC	IMPERIAL
Bedroom 2	4.31m × 2.97m	14'2" × 9'9"
Bedroom 3	2.9m × 2.65m	9'6" × 8'8"
Bedroom 4	2.92m × 2.53m	9'7" × 8'4"
SECOND FLOOR	METRIC	IMPERIAL
Bedroom 1	3.7m × 3.03m	12'2" × 9'11"
GIA	117.9 m ²	1,268.6 ft ²

Floor plans represent typical layouts of the design of the apartments. They are not shown to scale. All measurements and areas may vary within a tolerance of 5%. Plot specification, internal and external finishes, dimensions and differences to plots should be checked with the Sales Team before reservation.

ABOUT THE DEVELOPER



Ealing Council is building the high-quality new homes that west London needs.

In this latest phase of a ambitious, multi-decade investment, it is transforming neighbourhoods around the borough's seven towns into places where people can thrive.

Supported by the Mayor of London, these outstanding developments are setting new standards in quality, design, and community creation. The homes provide value for the whole community which will last long into the future.



For all Shared Ownership sales enquiries at Rathbone Terrace, please contact Red Loft who are acting on behalf of Ealing to market and sell the mews townhouses.

020 7539 3745
ealing@redloft.co.uk

