

# LOCKVIEW AT MIDDLEBECK

NEWARK-ON-TRENT

platform   
**home**  
OWNERSHIP



# PLATFORM HOME OWNERSHIP

---

At Platform Home Ownership, we're passionate about building quality homes for our customers and creating communities that homeowners can be proud of. It's our mission to build a better future for the UK - investing in affordable homes to ensure accessible routes to homeownership for everyone.

*Building A Better Future Through New Homes*

**INTRODUCTION**  
P. 04

**LOCAL AREA**  
P. 06

**CONNECTIVITY**  
P. 07

**SHARED OWNERSHIP**  
P. 10

**THE DEVELOPMENT**  
P. 11

**AVAILABLE HOMES**  
P. 13

**GET IN TOUCH**



MDCCKLVIII

Saks  
HAIR

Saks  
HAIR

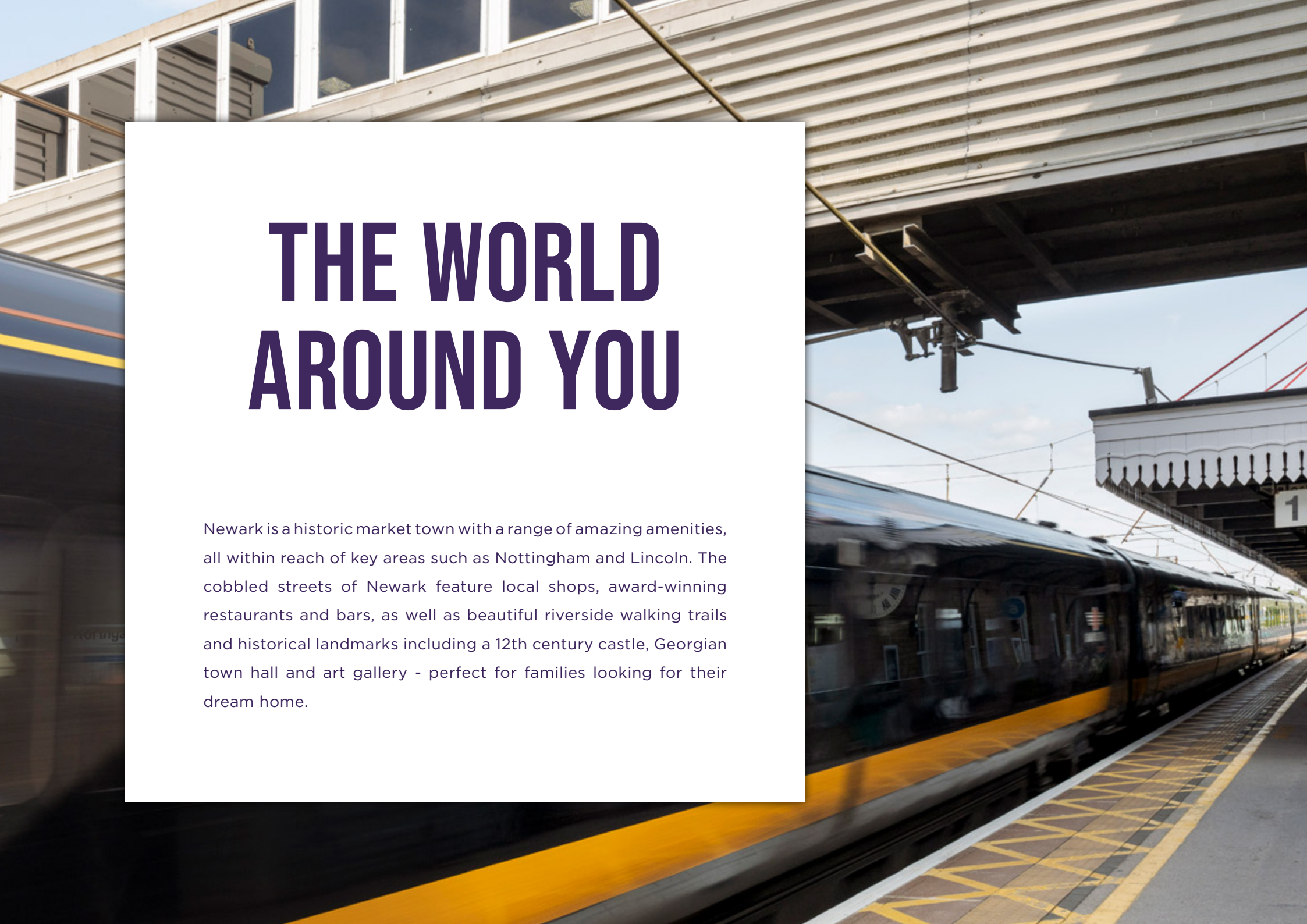
SOLD BY  
THE ESTATE  
AGENTS

The White Horse

**WELCOME TO LOCKVIEW  
AT MIDDLEBECK,  
THE KEY TO  
HOMEOWNERSHIP  
IN NEWARK-ON-TRENT.**

# THE WORLD AROUND YOU

Newark is a historic market town with a range of amazing amenities, all within reach of key areas such as Nottingham and Lincoln. The cobbled streets of Newark feature local shops, award-winning restaurants and bars, as well as beautiful riverside walking trails and historical landmarks including a 12th century castle, Georgian town hall and art gallery - perfect for families looking for their dream home.



# LOCKVIEW AT MIDDLEBECK IS PERFECTLY CONNECTED IN EVERY DIRECTION MAKING IT A HOME BUYERS DREAM

**15 MILES**  
GRANTHAM

**18 MILES**  
LINCOLN

**20 MILES**  
NOTTINGHAM

**37 MILES**  
LEICESTER

## LOCAL AMENITIES

CONVENIENCE STORE	2 MINUTES	0.5 MILES
DOCTORS	6 MINUTES	1.9 MILES
GYM	3 MINUTES	0.9 MILES
SUPERMARKET	8 MINUTES	2.1 MILES

## PLACES OF INTEREST

NEWARK CASTLE AND GARDENS	8 MINUTES	2.4 MILES
PALACE THEATRE	8 MINUTES	1.9 MILES
HIGHAM RIVERSIDE PARK	4 MINUTES	1.7 MILES
CINEMA	7 MINUTES	3.6 MILES

## CONNECTIVITY

NEWARK CASTLE STATION	8 MINUTES	2.4 MILES
NEWARK NORTHGATE STATION	9 MINUTES	2.2 MILES
RIVERSIDE PARK	9 MINUTES	2.6 MILES
NEWARK TOWN HALL MUSEUM & ART GALLERY	10 MINUTES	2.6 MILES

## EDUCATION

CHRIST CHURCH C OF E SCHOOL	1 MINUTES	0.4 MILES
SIR DONALD BAILEY ACADEMY	2 MINUTES	0.8 MILES
KINGS PRIMARY ACADEMY	4 MINUTES	1.3 MILES
HIGHFIELDS SCHOOL	6 MINUTES	2.0 MILES

Travel times are all shown in minutes and are representative of driving time. All times and distances are taken from [google.com/maps](https://www.google.com/maps)





# ABOUT SHARED OWNERSHIP

## BUY YOUR LOCKVIEW AT MIDDLEBECK HOME THROUGH SHARED OWNERSHIP

Your dream home is more affordable than you may think with Shared Ownership. Shared Ownership means you can purchase part of your home and then pay rent on the remaining share. Typically, you can purchase 40-75% of your home, but lower shares are available. What's more, Shared Ownership is flexible, and allows you to increase your level of ownership over time if you choose to.

Whatever your looking for, we have a wide selection of homes perfect for whatever your needs.

Buying through Shared Ownership at this development means you can purchase between 25 - 75% of your property and pay a subsidised rent on the remaining share you don't own.

## HOW IT WORKS

- 1** BUY THE FIRST SHARE IN YOUR NEW HOME.
- 2** PAY RENT ON THE REMAINING SHARE
- 3** BUY MORE SHARES IN YOUR HOME LATER

## DID YOU KNOW?

Shared Ownership offers great flexibility, and you can purchase more of your home through staircasing whenever you are ready too.

# LOCKVIEW AT MIDDLEBECK

NEWARK-ON-TRENT

**A STUNNING COLLECTION OF ONE, TWO, THREE AND FOUR-BEDROOM HOMES AVAILABLE THROUGH SHARED OWNERSHIP, ALL LOCATED IN A BRAND NEW DESTINATION FOR THE AREA.**

Lockview at Middlebeck represents a new standard of living for Newark - a huge project that will effectively create a new neighbourhood, home to all of the amenities and access that residents could ask for. Each and every home within the Middlebeck scheme is built to the highest standards, utilising state-of-the-art fixtures and fittings to ensure a truly modern lifestyle.

GET TO KNOW

# LOCKVIEW AT MIDDLEBECK

NEWARK-ON-TRENT

Lockview at Middlebeck is an exclusive collection of one, two, three and four-bedroom homes offering new opportunities for first time buyers, downsizers and growing families.



**THE BAYMONT**  
2 Bedroom Home



**THE HAYTON**  
3 Bedroom Home



**THE TORWOOD**  
4 Bedroom Home



**THE ALLAMONT**  
2 Bedroom Home



**THE LOCKTON**  
3 Bedroom Home



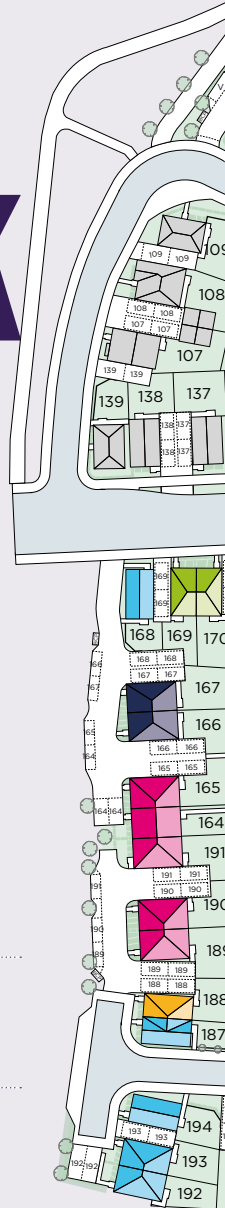
**THE TAYWOOD**  
4 Bedroom Home



**THE SHERMONT**  
2 Bedroom Home



**THE HARDING**  
1 Bedroom Home





THE ALLAMONT



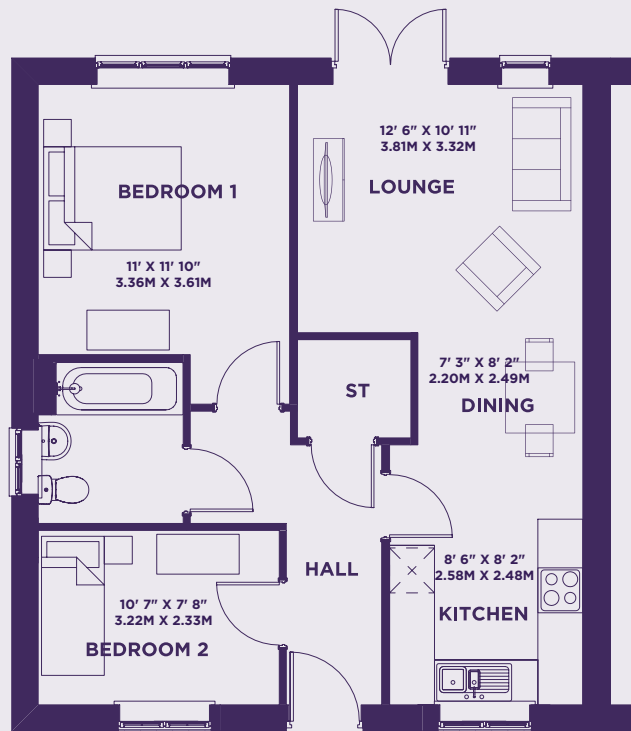
This image is from an imaginary viewpoint within an open space area. Its purpose is to give a feel for the development, not an accurate description of each property. The illustration shows a typical Platform Home Ownership home of this type, but there are, however, variances from site to site. External materials, finishes, landscaping, windows and the position of garages, (where provided) may vary throughout the development. Properties may also be built handed (mirror image). Please ask for further details.

# THE ALLAMONT

PLOTS 59 & 60

SEMI-DETACHED

TOTAL 649 SQ FT



## SPECIFICATION

### Kitchen

- Modern fitted kitchen
- Stainless steel integral oven, hob & extract hood
- Space for washing machine & fridge/freezer
- Vinyl flooring to kitchen and WC
- Open plan Kitchen/living/dining

### Bathroom

- Family bathroom with
- Shower over bath
- Three piece white suite
- Complimentary wall tiling
- Vinyl flooring to bathroom

### General

- Located at the heart of a popular market town with easy access to key spots such as Nottingham, Leicester and Lincoln.
- Excellent links to A1, A46 and A17
- 2 parking spaces per property
- 10 Year build warranty
- Solar panels
- EV chargers

Lounge	136 sq ft	12.6 m <sup>2</sup>
Kitchen / Dining	170 sq ft	15.8 m <sup>2</sup>
Bedroom 1	140 sq ft	13 m <sup>2</sup>
Bedroom 2	81 sq ft	7.5 m <sup>2</sup>

THE SHERMONT



This image is from an imaginary viewpoint within an open space area. Its purpose is to give a feel for the development, not an accurate description of each property. The illustration shows a typical Platform Home Ownership home of this type, but there are, however, variances from site to site. External materials, finishes, landscaping, windows and the position of garages, (where provided) may vary throughout the development. Properties may also be built handed (mirror image). Please ask for further details.

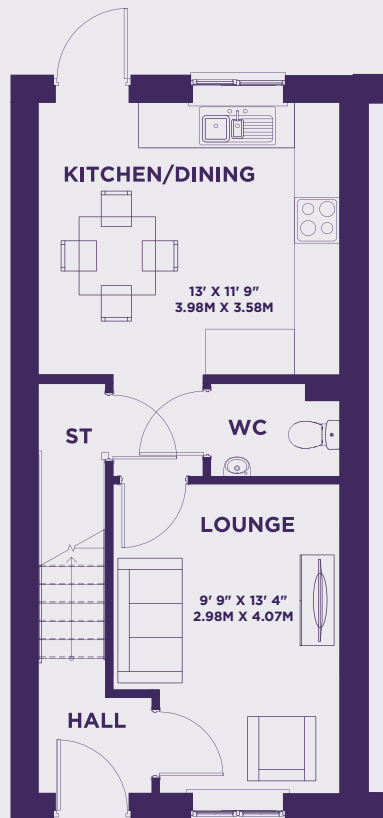
# THE SHERMONT

PLOTS 256, 257 & 258

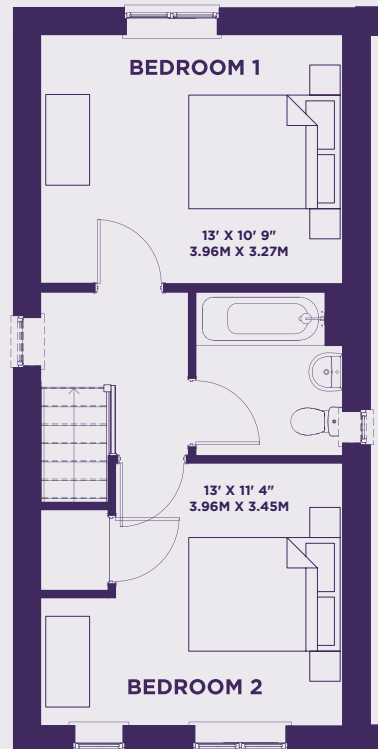
MID/END TERRACE

TOTAL 774 SQ FT

GROUND



FIRST



## SPECIFICATION

### Kitchen

- Modern fitted kitchen
- Stainless steel integral oven, hob & extract hood
- Space for washing machine & fridge/freezer
- Vinyl flooring to kitchen and WC

Open plan Kitchen/dining

### Bathroom

- Family bathroom with
- Shower over bath
- Three piece white suite
- Complimentary wall tiling

Vinyl flooring to bathroom

### General

- Located at the heart of a popular market town with easy access to key spots such as Nottingham, Leicester and Lincoln.
- Excellent links to A1, A46 and A17
- 2 parking spaces per property
- 10 Year build warranty
- Solar panels
- EV chargers

Lounge	122 sq ft	11.3 m <sup>2</sup>
Kitchen / Dining	170 sq ft	15.8 m <sup>2</sup>
Bedroom 1	139 sq ft	12.9 m <sup>2</sup>
Bedroom 2	128 sq ft	11.9 m <sup>2</sup>

THE SHERMONT



This image is from an imaginary viewpoint within an open space area. Its purpose is to give a feel for the development, not an accurate description of each property. The illustration shows a typical Platform Home Ownership home of this type, but there are, however, variances from site to site. External materials, finishes, landscaping, windows and the position of garages, (where provided) may vary throughout the development. Properties may also be built handed (mirror image). Please ask for further details.

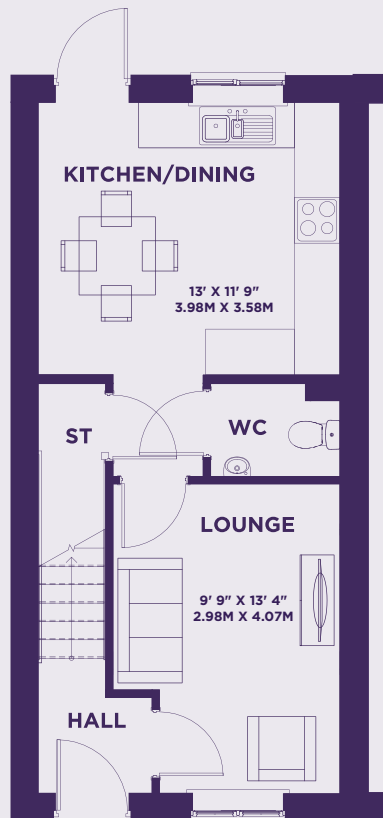
# THE SHERMONT

PLOTS 180, 181, 253, 254 & 255

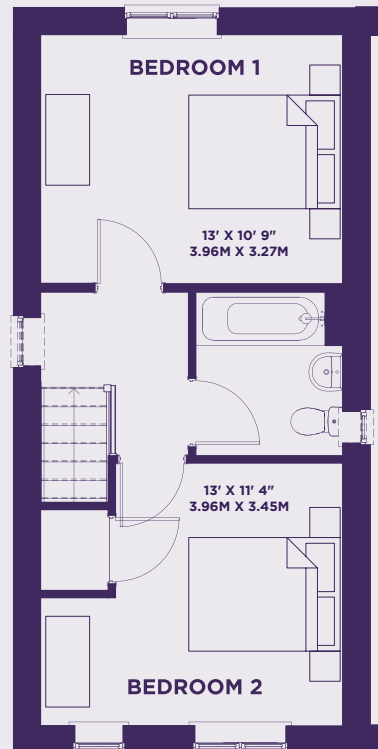
MID/END TERRACE

TOTAL 774 SQ FT

GROUND



FIRST



## SPECIFICATION

### Kitchen

- Modern fitted kitchen
- Stainless steel integral oven, hob & extract hood
- Space for washing machine & fridge/freezer
- Vinyl flooring to kitchen and WC

Open plan Kitchen/dining

### Bathroom

- Family bathroom with
- Shower over bath
- Three piece white suite
- Complimentary wall tiling

Vinyl flooring to bathroom

### General

- Located at the heart of a popular market town with easy access to key spots such as Nottingham, Leicester and Lincoln.
- Excellent links to A1, A46 and A17
- 2 parking spaces per property
- 10 Year build warranty
- Solar panels
- EV chargers

Lounge	122 sq ft	11.3 m <sup>2</sup>
Kitchen / Dining	170 sq ft	15.8 m <sup>2</sup>
Bedroom 1	139 sq ft	12.9 m <sup>2</sup>
Bedroom 2	128 sq ft	11.9 m <sup>2</sup>

THE BAYMONT



This image is from an imaginary viewpoint within an open space area. Its purpose is to give a feel for the development, not an accurate description of each property. The illustration shows a typical Platform Home Ownership home of this type, but there are, however, variances from site to site. External materials, finishes, landscaping, windows and the position of garages, (where provided) may vary throughout the development. Properties may also be built handed (mirror image). Please ask for further details.

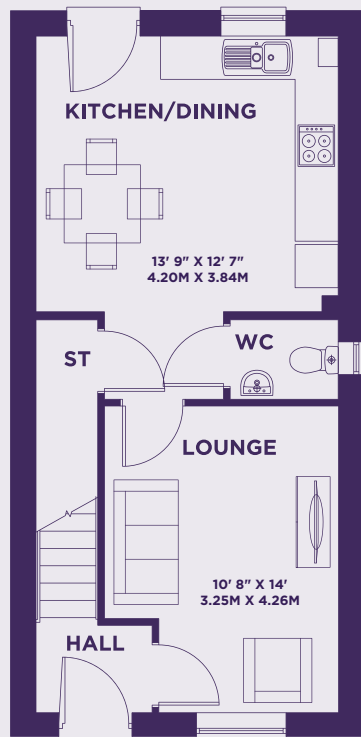
# THE BAYMONT

**PLOTS** 188, 251, 252

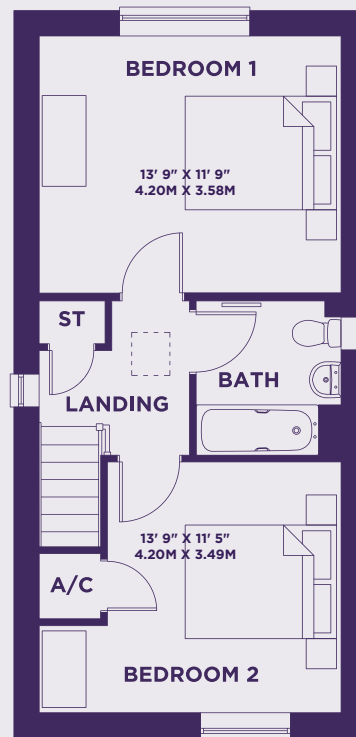
**SEMI-DETACHED**

**TOTAL 850 SQFT**

**GROUND**



**FIRST**



## SPECIFICATION

### Kitchen

- Modern fitted kitchen
- Stainless steel integral oven, hob & extract hood
- Space for washing machine & fridge/freezer
- Vinyl flooring to kitchen and WC
- Open plan Kitchen/dining

### Bathroom

- Family bathroom with
- Shower over bath
- Three piece white suite
- Complimentary wall tiling
- Vinyl flooring to bathroom

### General

- Located at the heart of a popular market town with easy access to key spots such as Nottingham, Leicester and Lincoln.
- Excellent links to A1, A46 and A17
- 2 parking spaces per property
- 10 Year build warranty
- Solar panels
- EV chargers

<b>LOUNGE</b>	150 sq ft	13.9 m <sup>2</sup>
<b>KITCHEN</b>	174 sq ft	16.1 m <sup>2</sup>
<b>Bedroom 1</b>	162 sq ft	15.1 m <sup>2</sup>
<b>Bedroom 2</b>	158 sq ft	14.7 m <sup>2</sup>



This image is from an imaginary viewpoint within an open space area. Its purpose is to give a feel for the development, not an accurate description of each property. The illustration shows a typical Platform Home Ownership home of this type, but there are, however, variances from site to site. External materials, finishes, landscaping, windows and the position of garages, (where provided) may vary throughout the development. Properties may also be built handed (mirror image). Please ask for further details.

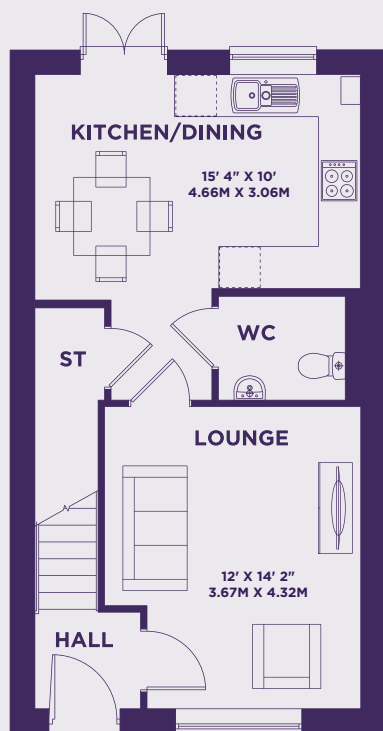
# THE HAYTON

PLOTS 5, 6, 169, 170, 229, 230

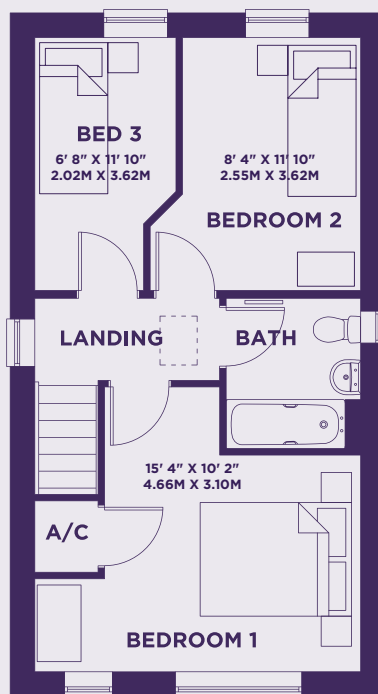
SEMI-DETACHED & MID TERRACE

TOTAL 911 SQFT

GROUND



FIRST



## SPECIFICATION

### Kitchen

- Modern fitted kitchen
- Stainless steel integral oven, hob & extract hood
- Space for washing machine & fridge/freezer
- Vinyl flooring to kitchen and WC
- Open plan Kitchen/dining

### Bathroom

- Family bathroom with
- Shower over bath
- Three piece white suite
- Complimentary wall tiling
- Vinyl flooring to bathroom

### General

- Located at the heart of a popular market town with easy access to key spots such as Nottingham, Leicester and Lincoln.
- Excellent links to A1, A46 and A17
- 2 parking spaces per property
- 10 Year build warranty
- Solar panels
- EV chargers

Lounge	171 sq ft	15.9 m2
Kitchen / Dining	154 sq ft	14.3 m2
Bedroom 1	156 sq ft	14.5 m2
Bedroom 2	100 sq ft	9.3 m2
Bedroom 3	79 sq ft	7.4 m2

THE LOCKTON



This image is from an imaginary viewpoint within an open space area. Its purpose is to give a feel for the development, not an accurate description of each property. The illustration shows a typical Platform Home Ownership home of this type, but there are, however, variances from site to site. External materials, finishes, landscaping, windows and the position of garages, (where provided) may vary throughout the development. Properties may also be built handed (mirror image). Please ask for further details.

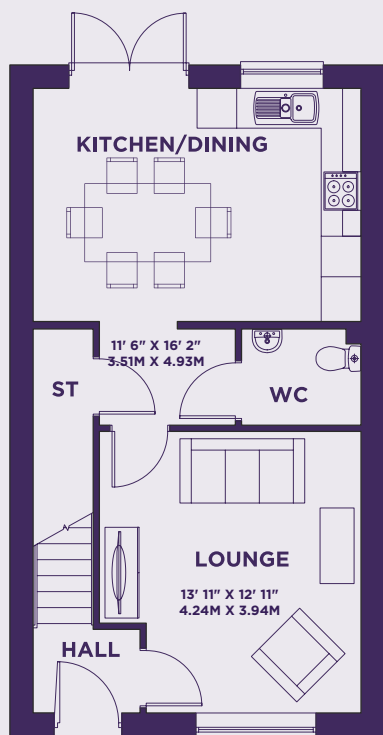
# THE LOCKTON

**PLOTS** 208, 209, 214, 215, 216, 217, 218, 219, 221, 222, 223, 224, 232, 233, 269, 270, 272 & 273

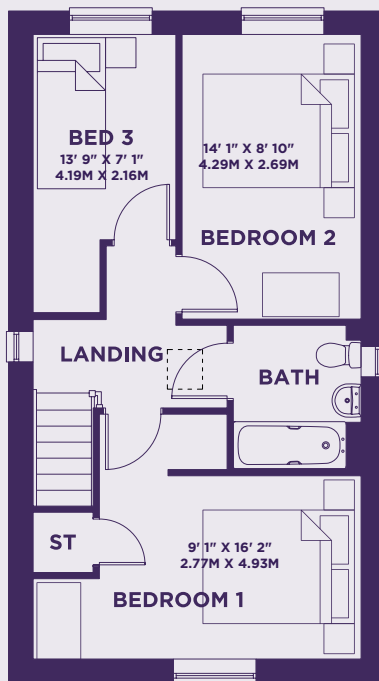
**SEMI-DETACHED**

**TOTAL 1,001 SQFT**

**GROUND**



**FIRST**



## SPECIFICATION

### Kitchen

- Modern fitted kitchen
- Stainless steel integral oven, hob & extract hood
- Space for washing machine & fridge/freezer
- Vinyl flooring to kitchen and WC
- Open plan Kitchen/dining

### Bathroom

- Family bathroom with
- Shower over bath
- Three piece white suite
- Complimentary wall tiling
- Vinyl flooring to bathroom

### General

- Located at the heart of a popular market town with easy access to key spots such as Nottingham, Leicester and Lincoln.
- Excellent links to A1, A46 and A17
- 2 parking spaces per property
- 10 Year build warranty
- Solar panels
- EV chargers

<b>Lounge</b>	180 sq ft	16.8 m2
<b>Kitchen/Dining</b>	187 sq ft	17.4 m2
<b>Bedroom 1</b>	147 sq ft	13.7 m2
<b>Bedroom 2</b>	124 sq ft	11.6 m2
<b>Bedroom 3</b>	45 sq ft	4.2 m2

THE LOCKTON



This image is from an imaginary viewpoint within an open space area. Its purpose is to give a feel for the development, not an accurate description of each property. The illustration shows a typical Platform Home Ownership home of this type, but there are, however, variances from site to site. External materials, finishes, landscaping, windows and the position of garages, (where provided) may vary throughout the development. Properties may also be built handed (mirror image). Please ask for further details.

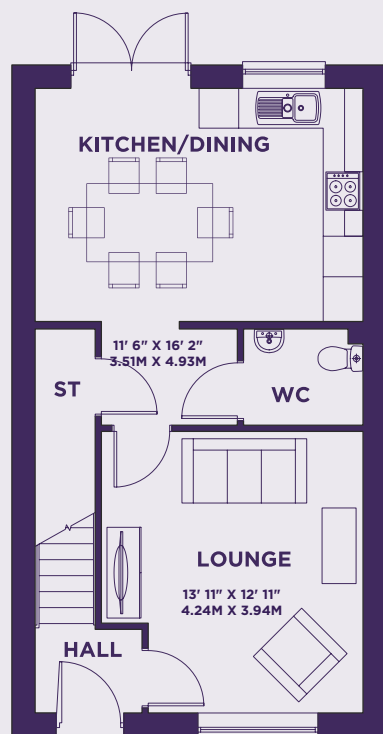
# THE LOCKTON

PLOTS 220, 268, 271

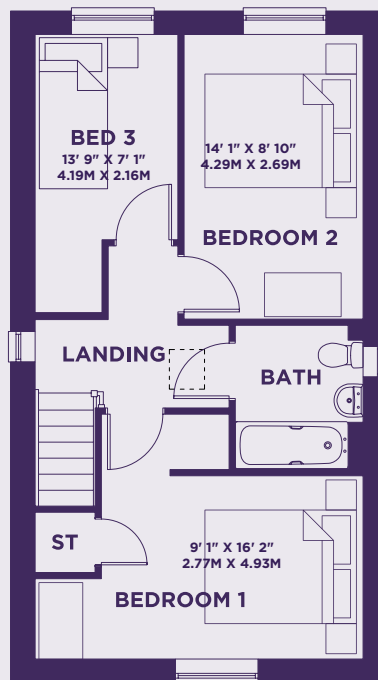
DETACHED

TOTAL 1,001 SQFT

GROUND



FIRST



## SPECIFICATION

### Kitchen

- Modern fitted kitchen
- Stainless steel integral oven, hob & extract hood
- Space for washing machine & fridge/freezer
- Vinyl flooring to kitchen and WC
- Open plan Kitchen/dining

### Bathroom

- Family bathroom with
- Shower over bath
- Three piece white suite
- Complimentary wall tiling
- Vinyl flooring to bathroom

### General

- Located at the heart of a popular market town with easy access to key spots such as Nottingham, Leicester and Lincoln.
- Excellent links to A1, A46 and A17
- 2 parking spaces per property
- 10 Year build warranty
- Solar panels
- EV chargers

Lounge	180 sq ft	16.8 m2
Kitchen/Dining	187 sq ft	17.4 m2
Bedroom 1	147 sq ft	13.7 m2
Bedroom 2	124 sq ft	11.6 m2
Bedroom 3	45 sq ft	4.2 m2

THE LOCKTON



This image is from an imaginary viewpoint within an open space area. Its purpose is to give a feel for the development, not an accurate description of each property. The illustration shows a typical Platform Home Ownership home of this type, but there are, however, variances from site to site. External materials, finishes, landscaping, windows and the position of garages, (where provided) may vary throughout the development. Properties may also be built handed (mirror image). Please ask for further details.

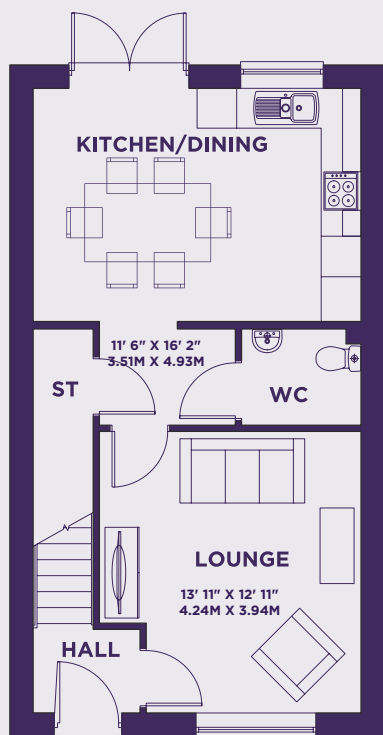
# THE LOCKTON

PLOTS 210, 211 & 225

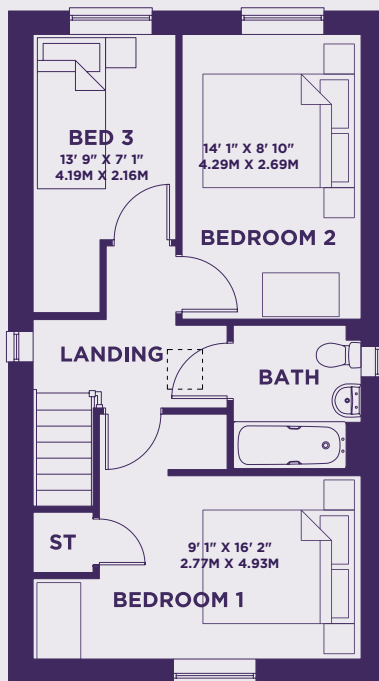
DETACHED

TOTAL 1,001 SQFT

GROUND



FIRST



## SPECIFICATION

### Kitchen

- Modern fitted kitchen
- Stainless steel integral oven, hob & extract hood
- Space for washing machine & fridge/freezer
- Vinyl flooring to kitchen and WC
- Open plan Kitchen/dining

### Bathroom

- Family bathroom with
- Shower over bath
- Three piece white suite
- Complimentary wall tiling
- Vinyl flooring to bathroom

### General

- Located at the heart of a popular market town with easy access to key spots such as Nottingham, Leicester and Lincoln.
- Excellent links to A1, A46 and A17
- 2 parking spaces per property
- 10 Year build warranty
- Solar panels
- EV chargers

Lounge	180 sq ft	16.8 m2
Kitchen/Dining	187 sq ft	17.4 m2
Bedroom 1	147 sq ft	13.7 m2
Bedroom 2	124 sq ft	11.6 m2
Bedroom 3	45 sq ft	4.2 m2

THE TORWOOD



This image is from an imaginary viewpoint within an open space area. Its purpose is to give a feel for the development, not an accurate description of each property. The illustration shows a typical Platform Home Ownership home of this type, but there are, however, variances from site to site. External materials, finishes, landscaping, windows and the position of garages, (where provided) may vary throughout the development. Properties may also be built handed (mirror image). Please ask for further details.

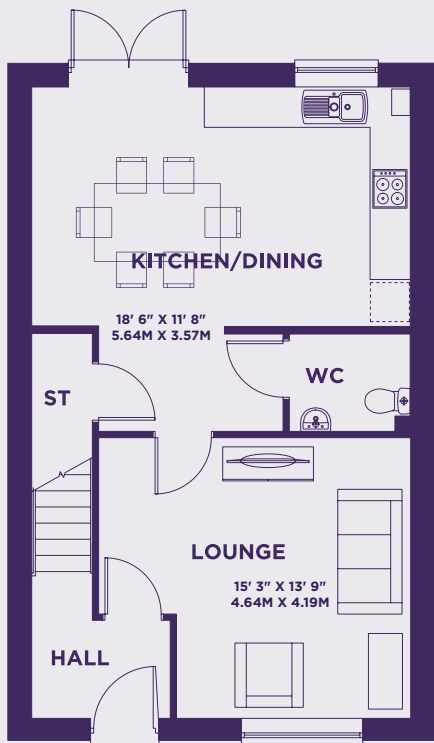
# THE TORWOOD

PLOTS 228, 231

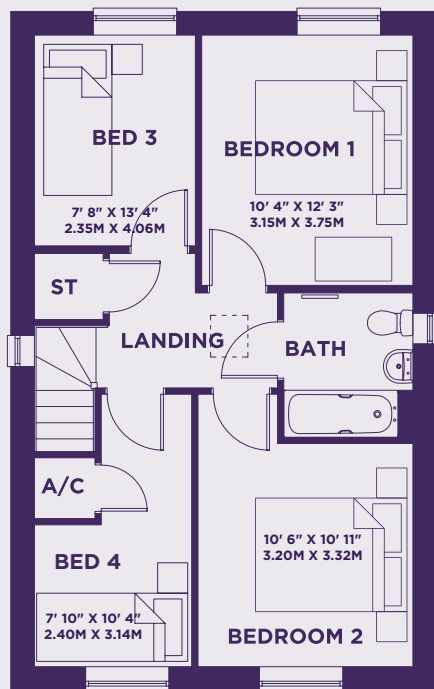
SEMI-DETACHED

TOTAL 1,143 SQFT

GROUND



FIRST



## SPECIFICATION

### Kitchen

- Modern fitted kitchen
- Stainless steel integral oven, hob & extract hood
- Space for washing machine & fridge/freezer
- Vinyl flooring to kitchen and WC
- Open plan Kitchen/dining

### Bathroom

- Family bathroom with
- Shower over bath
- Three piece white suite
- Complimentary wall tiling
- Vinyl flooring to bathroom

### General

- Located at the heart of a popular market town with easy access to key spots such as Nottingham, Leicester and Lincoln.
- Excellent links to A1, A46 and A17
- 2 parking spaces per property
- 10 Year build warranty
- Solar panels
- EV chargers

Lounge	210 sq ft	19.5 m2
Kitchen / Dining	217 sq ft	20.2 m2
Bedroom 1	127 sq ft	11.8 m2
Bedroom 2	115 sq ft	10.7 m2
Bedroom 3	103 sq ft	9.6 m2
Bedroom 4	82 sq ft	7.6 m2

THE TAYWOOD



This image is from an imaginary viewpoint within an open space area. Its purpose is to give a feel for the development, not an accurate description of each property. The illustration shows a typical Platform Home Ownership home of this type, but there are, however, variances from site to site. External materials, finishes, landscaping, windows and the position of garages, (where provided) may vary throughout the development. Properties may also be built handed (mirror image). Please ask for further details.

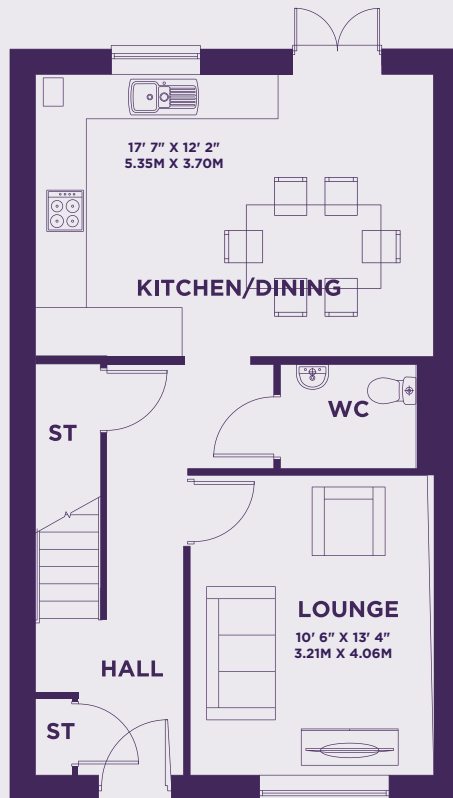
# THE TAYWOOD

PLOTS 166, 167

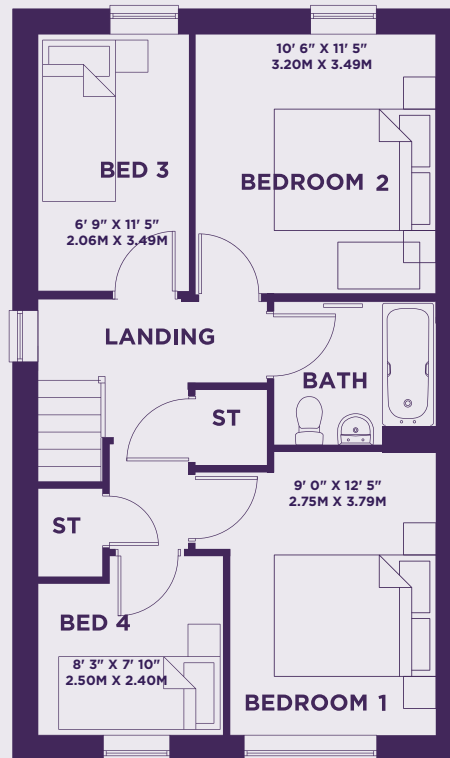
SEMI-DETACHED

TOTAL 1,083 SQFT

GROUND



FIRST



## SPECIFICATION

### Kitchen

- Modern fitted kitchen
- Stainless steel integral oven, hob & extract hood
- Space for washing machine & fridge/freezer
- Vinyl flooring to kitchen and WC
- Open plan Kitchen/dining

### Bathroom

- Family bathroom with
- Shower over bath
- Three piece white suite
- Complimentary wall tiling
- Vinyl flooring to bathroom

### General

- Located at the heart of a popular market town with easy access to key spots such as Nottingham, Leicester and Lincoln.
- Excellent links to A1, A46 and A17
- 2 parking spaces per property
- 10 Year build warranty
- Solar panels
- EV chargers

Kitchen / Dining	213 sq ft	19.8 m <sup>2</sup>
Lounge	140 sq ft	13.1 m <sup>2</sup>
Bedroom 1	116 sq ft	10.7 m <sup>2</sup>
Bedroom 2	121 sq ft	11.2 m <sup>2</sup>
Bedroom 3	78 sq ft	7.2 m <sup>2</sup>
Bedroom 4	62 sq ft	5.7 m <sup>2</sup>







MIDDLEBECK,  
NEWARK,  
NG24 3XP



PLATFORMHOMEOWNERSHIP



@PLATFORMHOMEOWNERSHIP



@PLATFORMNEWHOME

GET IN TOUCH

0333 200 7304

[sales@platformhg.com](mailto:sales@platformhg.com)

SATNAV

NG24 3XP

Platform Home Ownership have taken every effort to ensure that these documents are accurate and represent the properties available. Platform Home Ownership and the developer may in their efforts to improve design reserve the right to alter site plans, floorplans, elevations and specifications without prior notice. Maps shown are not to scaled and for illustrative purposes only. Distances are taken from [google.co.uk/maps](https://www.google.co.uk/maps). Information is correct at the time it was published - **June 2026**. For more information please visit us website at [www.platformhomeownership.com](http://www.platformhomeownership.com)