



5 Elm Close

Milton Abingdon, OX14 4TT

40% Shared Ownership £ 188,000

A beautifully presented three-bedroom semi-detached new-build home offered for sale on a shared ownership basis situated within the highly desirable Canopies development in Milton – an innovative net zero carbon community created by Greencore Homes.

Built to Greencore's exacting standards, the property benefits from a range of advanced eco-friendly technologies including photovoltaic (PV) solar panels, an air source heat pump providing efficient heating and hot water and a mechanical ventilation with heat recovery (MVHR) system that continuously circulates fresh filtered air while retaining warmth within the home. Together, these features help reduce energy consumption and running costs creating a comfortable and future-proofed living environment.

The welcoming entrance hall includes a plant cupboard providing discreet housing for the property's renewable energy and ventilation systems. A useful storage cupboard, under stairs storage area, and a great sized downstairs WC. This leads to an open plan living area with well-appointed kitchen featuring an integrated fridge freezer, a built-in Bosch oven, electric hob and extractor hood. The carpeted spacious living room opens out through patio doors directly onto the rear garden which is turfed with a patio and garden shed.

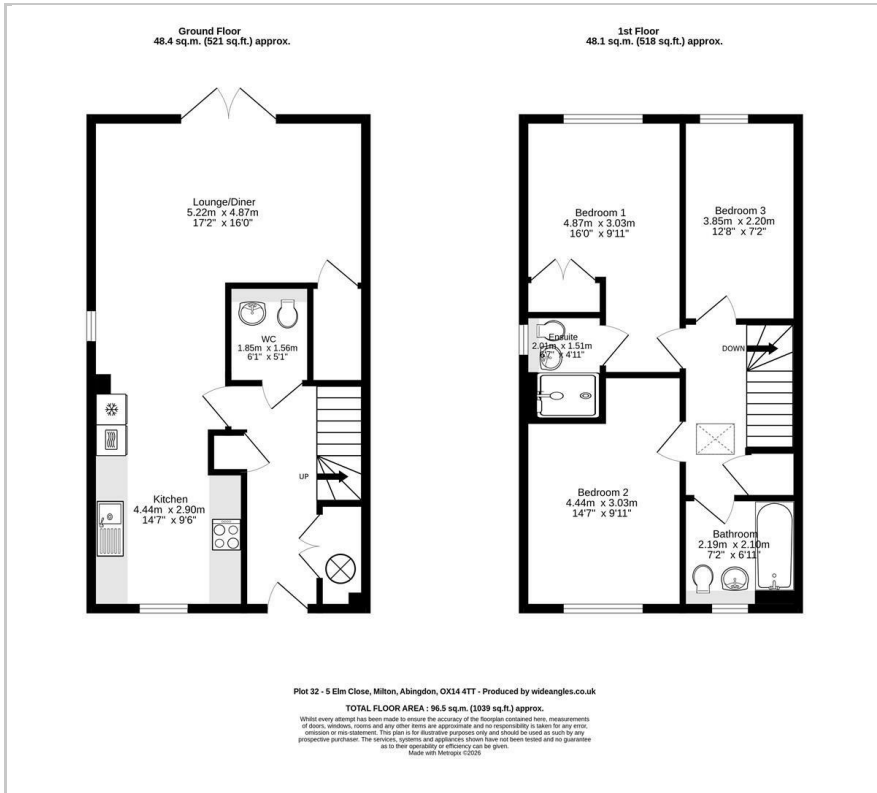
Upstairs, the main bedroom benefits from fitted wardrobes and an en-suite shower room. The second bedroom is a comfortable double room, while the third bedroom is a generously sized single, ideal as a child's bedroom, guest room or home office. These rooms are served by a bright and airy family bathroom.

The property also benefits from two allocated parking spaces with EV charges.

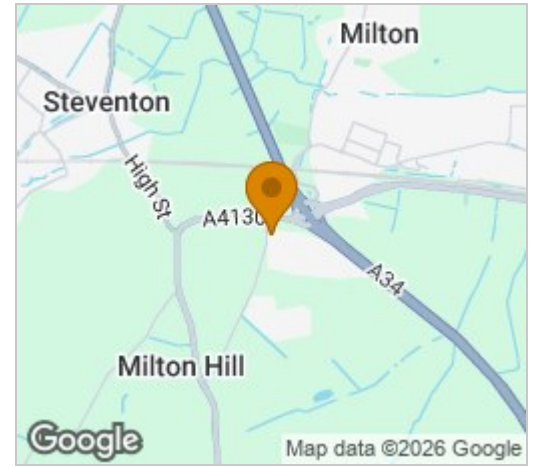
- 3-Bedroom Semi-Detached House
- 40% Shared Ownership £ 188,000
- Full Open Market Price £ 470,000
- Shares Available 10 - 75%
- Estimated Monthly Service Charge £ 46.49pcm
- Solar PV Panels
- 2 Allocated Parking Spaces + EV Charging Point
- Net Zero Carbon Homes Development
- Turfed Rear Garden with patio + Shed provided



Floor Plan



Area Map



Energy Efficiency Graph



These particulars, whilst believed to be accurate are set out as a general outline only for guidance and do not constitute any part of an offer or contract. Intending purchasers should not rely on them as statements of representation of fact, but must satisfy themselves by inspection or otherwise as to their accuracy. No person in this firm's employment has the authority to make or give any representation or warranty in respect of the property.