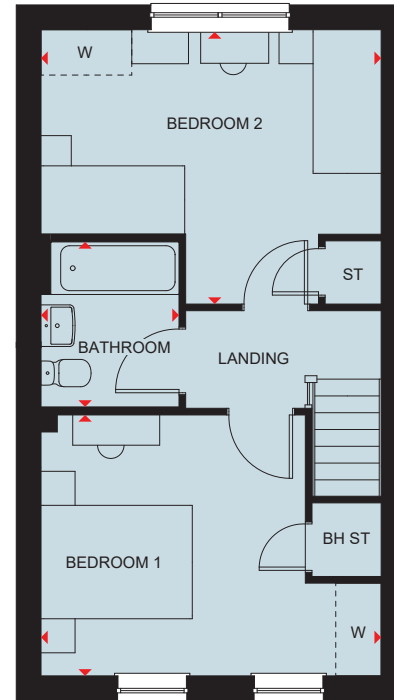


GROUND FLOOR DIMS

Ground Floor

Lounge	4500 x 5214 mm	14'9" x 17'1"
Kitchen / Dining	2858 x 3326 mm	9'5" x 10'11"
WC	1555 x 1051 mm	5'1" x 3'5"



FIRST FLOOR DIMS

First Floor

Bedroom 1	4500 x 3451 mm	14'9" x 11'4"
Bedroom 2	4500 x 3629 mm	14'9" x 11'11"
Bathroom	1825 x 2182 mm	6'0" x 7'2"