

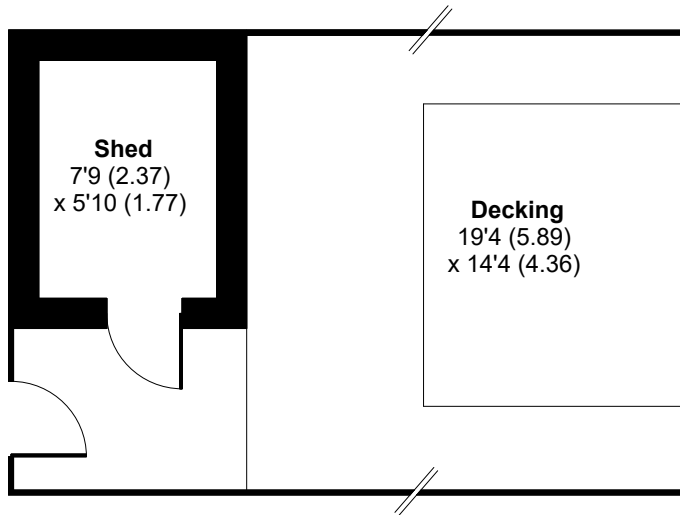
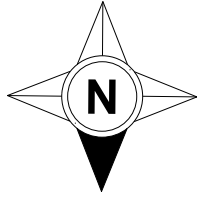
24 Oak Tree Close, Odiham, Hook, RG29 1FT

Approximate Area = 868 sq ft / 80.6 sq m

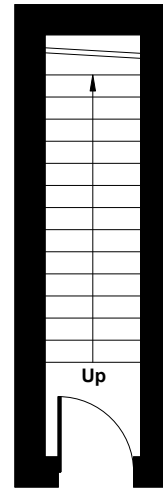
Outbuilding = 45 sq ft / 4.1 sq m

Total = 913 sq ft / 84.7 sq m

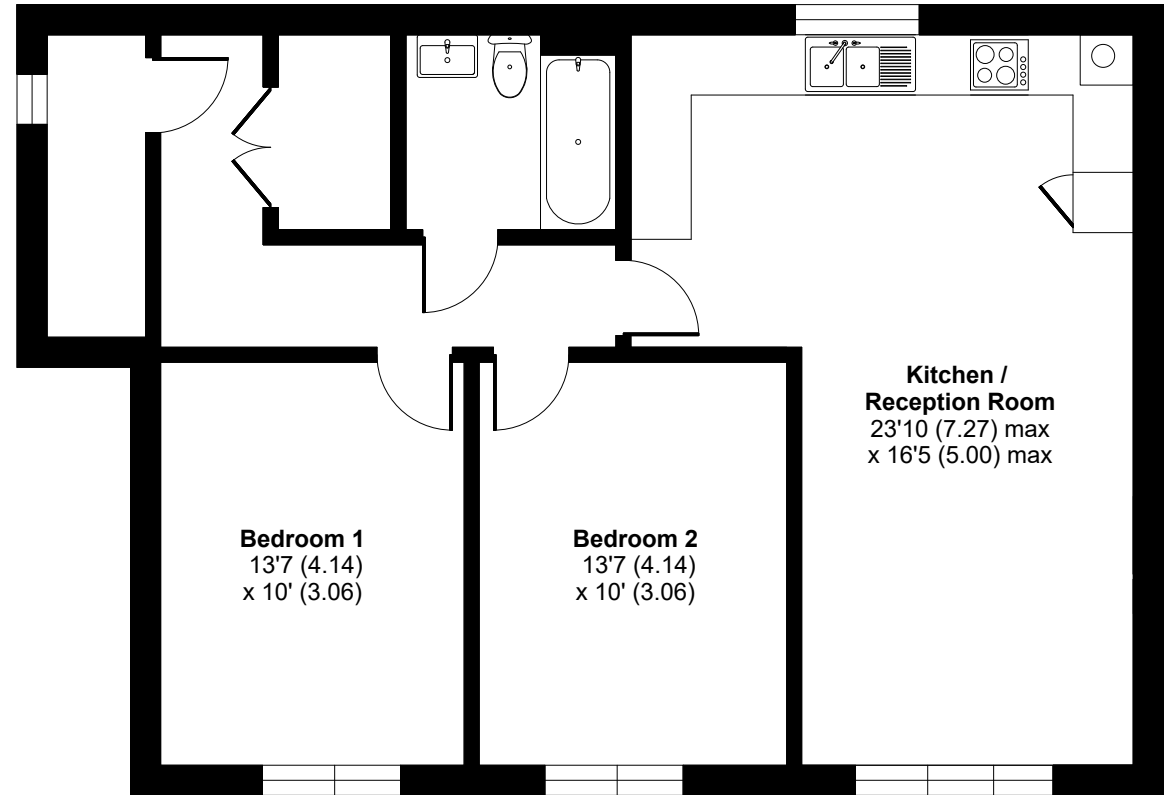
For identification only - Not to scale



OUTBUILDING



GROUND FLOOR



FIRST FLOOR