

The Roseberry

Micklewell Park, Daventry (Phase 3a)

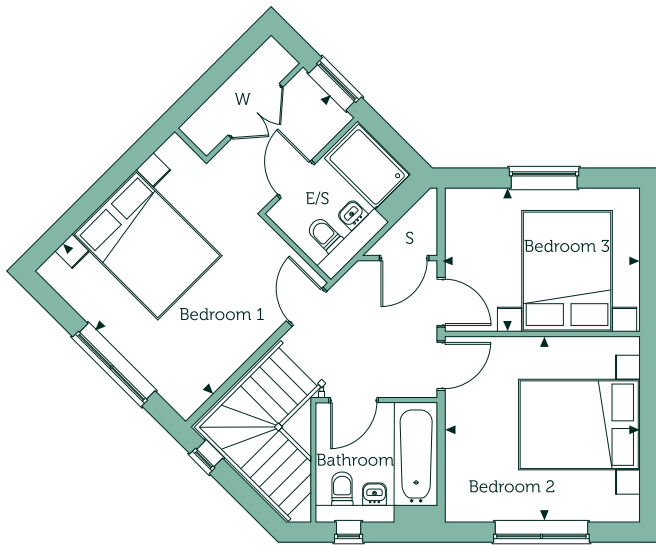
Three Bedroom Home

Plots 191, 192, 195, 198, 201, 209 & 210



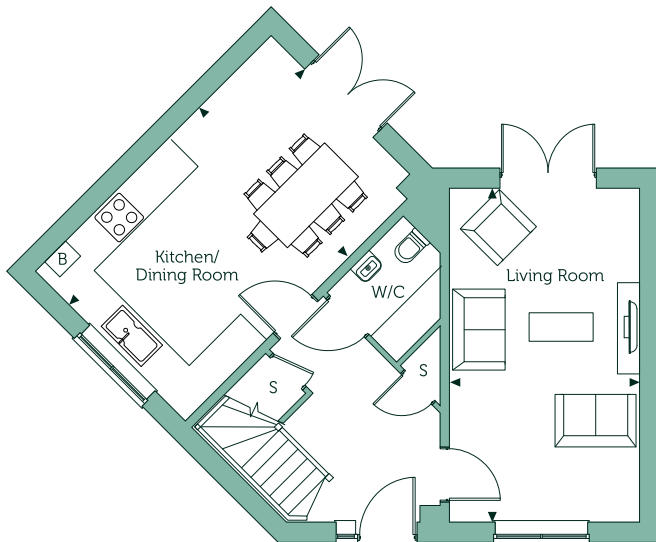
The Roseberry

Micklewell Park, Daventry



First Floor

Bedroom 1	17'11" x 11'5"	5.47m x 3.49m
Bedroom 2	10'0" x 10'6"	3.04m x 3.20m
Bedroom 3	7'8" x 10'6"	2.34m x 3.20m



Ground Floor

Kitchen/Dining Room	17'11" x 11'5"	5.47m x 3.47m
Living Room	17'11" x 10'4"	5.47m x 3.14m
Gross internal area	1102 sqft	102.4 sqm

Key

B Boiler S Store Cupboard W Built in Wardrobe

Floorplans are not drawn to scale. Measurements are taken from areas marked with an arrow. They are maximum approximate dimensions and given as a guide only. These should not be used as a basis for purchasing flooring or furniture. Orbit reserve the right to alter plans, specifications, position of doors and windows and change tenure subject to demand without prior notice. External elevations vary from plot to plot. Please ask your Sales Consultant for current information when reserving your new home. Information correct at time of going to print. Computer generated image overleaf is to be used for guidance only.