



SNG at Blackhorse Fields **The Luna**

2 bedroom semi-detached



Computer generated image for illustration purposes only. Finishes and materials used may be subject to change.

SNG at Blackhorse Fields The Luna

2 bedroom semi-detached
Plot 14

2  1  2 

Room

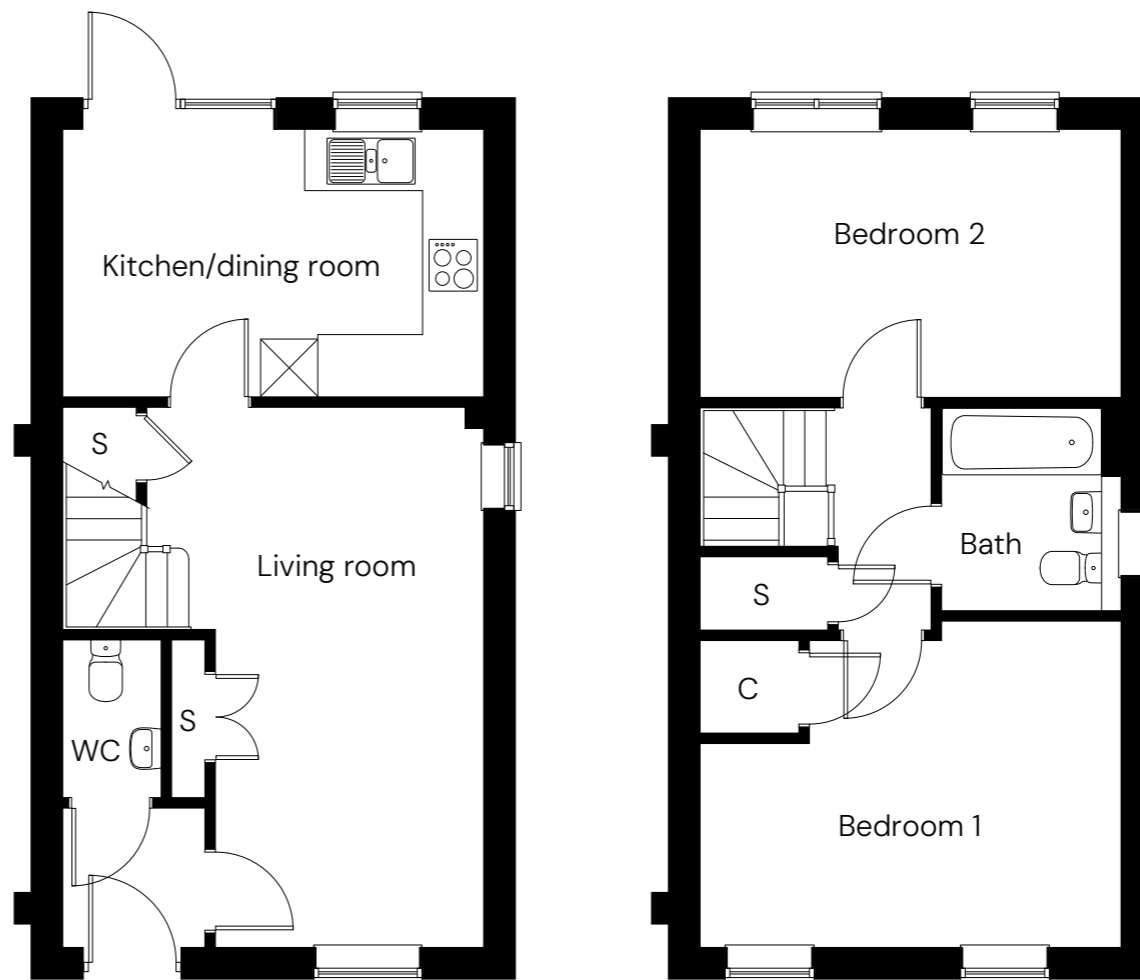
Kitchen/dining room	4.7m x 3.0m
---------------------	-------------

Living room	3.1m x 5.9m
-------------	-------------

Bedroom 1	4.7m x 3.6m
-----------	-------------

Bedroom 2	4.7m x 2.9m
-----------	-------------









Total area	79.8m²
-------------------	--------------------------



C Cylinder S Storage

Floor plan for illustration purposes only and not to scale. Dimensions are maximum and for general guidance, not suitable for furniture, appliances, or carpet sizing.

SNG at Blackhorse Fields Site plan

-  **The Ayla**
3 bedroom semi-detached
-  **The Mayflower**
2 bedroom detached/
2 bedroom semi-detached
-  **The Luna**
2 bedroom semi-detached
-  **Parking spaces**
-  **Visitor parking**
-  **Air source heat pump**
-  **EV charging point**
-  **Shed**

Site layout and landscaping is
indicative only and subject to change.

