

LOCKVIEW AT MIDDLEBECK

NEWARK-ON-TRENT

platform
home
OWNERSHIP



INTRODUCTION
P. 04

LOCAL AREA
P. 06

CONNECTIVITY
P. 07

SHARED OWNERSHIP
P. 10

THE DEVELOPMENT
P. 11

AVAILABLE HOMES
P. 13

GET IN TOUCH

PLATFORM HOME OWNERSHIP

At Platform Home Ownership, we're passionate about building quality homes for our customers and creating communities that homeowners can be proud of. It's our mission to build a better future for the UK - investing in affordable homes to ensure accessible routes to homeownership for everyone.

Building A Better Future Through New Homes



**WELCOME TO LOCKVIEW
AT MIDDLEBECK,
THE KEY TO
HOMEOWNERSHIP
IN NEWARK-ON-TRENT.**

THE WORLD AROUND YOU

Newark is a historic market town with a range of amazing amenities, all within reach of key areas such as Nottingham and Lincoln. The cobbled streets of Newark feature local shops, award-winning restaurants and bars, as well as beautiful riverside walking trails and historical landmarks including a 12th century castle, Georgian town hall and art gallery - perfect for families looking for their dream home.

**LOCKVIEW AT MIDDLEBECK
IS PERFECTLY CONNECTED IN
EVERY DIRECTION MAKING IT
A HOME BUYERS DREAM**

15 MILES
GRANTHAM

18 MILES
LINCOLN

20 MILES
NOTTINGHAM

37 MILES
LEICESTER

LOCAL AMENITIES

| | | |
|-------------------|-----------|-----------|
| CONVENIENCE STORE | 2 MINUTES | 0.5 MILES |
| DOCTORS | 6 MINUTES | 1.9 MILES |
| GYM | 3 MINUTES | 0.9 MILES |
| SUPERMARKET | 8 MINUTES | 2.1 MILES |

PLACES OF INTEREST

| | | |
|---------------------------|-----------|-----------|
| NEWARK CASTLE AND GARDENS | 8 MINUTES | 2.4 MILES |
| PALACE THEATRE | 8 MINUTES | 1.9 MILES |
| HIGHAM RIVERSIDE PARK | 4 MINUTES | 1.7 MILES |
| CINEMA | 7 MINUTES | 3.6 MILES |

CONNECTIVITY

| | | |
|---------------------------------------|------------|-----------|
| NEWARK CASTLE STATION | 8 MINUTES | 2.4 MILES |
| NEWARK NORTHGATE STATION | 9 MINUTES | 2.2 MILES |
| RIVERSIDE PARK | 9 MINUTES | 2.6 MILES |
| NEWARK TOWN HALL MUSEUM & ART GALLERY | 10 MINUTES | 2.6 MILES |

EDUCATION

| | | |
|-----------------------------|-----------|-----------|
| CHRIST CHURCH C OF E SCHOOL | 1 MINUTES | 0.4 MILES |
| SIR DONALD BAILEY ACADEMY | 2 MINUTES | 0.8 MILES |
| KINGS PRIMARY ACADEMY | 4 MINUTES | 1.3 MILES |
| HIGHFIELDS SCHOOL | 6 MINUTES | 2.0 MILES |

Travel times are all shown in minutes and are representative of driving time. All times and distances are taken from google.com/maps





ABOUT SHARED OWNERSHIP

BUY YOUR LOCKVIEW AT MIDDLEBECK HOME THROUGH SHARED OWNERSHIP

Your dream home is more affordable than you may think with Shared Ownership. Shared Ownership means you can purchase part of your home and then pay rent on the remaining share. Typically, you can purchase 40-75% of your home, but lower shares are available. What's more, Shared Ownership is flexible, and allows you to increase your level of ownership over time if you choose to.

Whatever your looking for, we have a wide selection of homes perfect for whatever your needs.

Buying through Shared Ownership at this development means you can purchase between 25 - 75% of your property and pay a subsidised rent on the remaining share you don't own.

HOW IT WORKS

- 1** BUY THE FIRST SHARE IN YOUR NEW HOME.
- 2** PAY RENT ON THE REMAINING SHARE
- 3** BUY MORE SHARES IN YOUR HOME LATER

DID YOU KNOW?

Shared Ownership offers great flexibility, and you can purchase more of your home through staircasing whenever you are ready too.

LOCKVIEW AT MIDDLEBECK

NEWARK-ON-TRENT

A STUNNING COLLECTION OF ONE, TWO, THREE AND FOUR-BEDROOM HOMES AVAILABLE THROUGH SHARED OWNERSHIP, ALL LOCATED IN A BRAND NEW DESTINATION FOR THE AREA.

Lockview at Middlebeck represents a new standard of living for Newark - a huge project that will effectively create a new neighbourhood, home to all of the amenities and access that residents could ask for. Each and every home within the Middlebeck scheme is built to the highest standards, utilising state-of-the-art fixtures and fittings to ensure a truly modern lifestyle.



GET TO KNOW

LOCKVIEW AT MIDDLEBECK

NEWARK-ON-TRENT

Lockview at Middlebeck is an exclusive collection of one, two, three and four-bedroom homes offering new opportunities for first time buyers, downsizers and growing families.



THE BAYMONT
2 Bedroom Home



THE HAYTON
3 Bedroom Home



THE TORWOOD
4 Bedroom Home



THE ALLAMONT
2 Bedroom Home



THE LOCKTON
3 Bedroom Home



THE TAYWOOD
4 Bedroom Home



THE SHERMONT
2 Bedroom Home



THE HARDING
1 Bedroom Home







THE ALLMONT

This image is from an imaginary viewpoint within an open space area. Its purpose is to give a feel for the development, not an accurate description of each property. The illustration shows a typical Platform Home Ownership home of this type, but there are, however, variances from site to site. External materials, finishes, landscaping, windows and the position of garages, (where provided) may vary throughout the development. Properties may also be built handed (mirror image). Please ask for further details.

SPECIFICATION

Kitchen

- Modern fitted kitchen
- Stainless steel integral oven, hob & extract hood
- Space for washing machine & fridge/freezer
- Vinyl flooring to kitchen and WC
- Open plan Kitchen/living/dining

Bathroom

- Family bathroom with Shower over bath
- Three piece white suite
- Complimentary wall tiling
- Vinyl flooring to bathroom

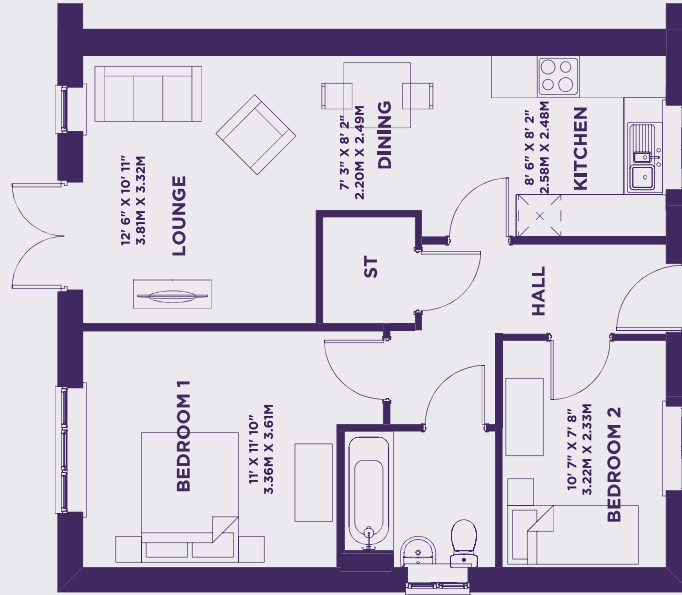
General

- Located at the heart of a popular market town with easy access to key spots such as Nottingham, Leicester and Lincoln.
- Excellent links to A1, A46 and A17
- 2 parking spaces per property
- 10 Year build warranty
- Solar panels
- EV chargers

| | | |
|-------------------------|-----------|---------------------|
| Lounge | 136 sq ft | 12.6 m ² |
| Kitchen / Dining | 170 sq ft | 15.8 m ² |
| Bedroom 1 | 140 sq ft | 13 m ² |
| Bedroom 2 | 81 sq ft | 7.5 m ² |

THE ALLAMONT

PLOTS 59 & 60
SEMI-DETACHED
TOTAL 649 SQ FT





THE SHERMONT

This image is from an imaginary viewpoint within an open space area. Its purpose is to give a feel for the development, not an accurate description of each property. The illustration shows a typical Platform Home Ownership home of this type, but there are, however, variances from site to site. External materials, finishes, landscaping, windows and the position of garages, (where provided) may vary throughout the development. Properties may also be built handed (mirror image). Please ask for further details.

SPECIFICATION

Kitchen

- Modern fitted kitchen
 - Stainless steel integral oven, hob & extract hood
 - Space for washing machine & fridge/freezer
 - Vinyl flooring to kitchen and WC
- Open plan Kitchen/dining

Bathroom

- Family bathroom with Shower over bath
 - Three piece white suite
 - Complimentary wall tiling
- Vinyl flooring to bathroom

General

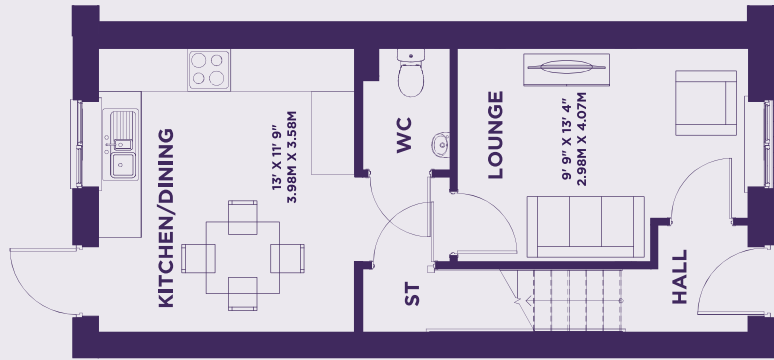
- Located at the heart of a popular market town with easy access to key spots such as Nottingham, Leicester and Lincoln.
- Excellent links to A1, A46 and A17
- 2 parking spaces per property
- 10 Year build warranty
- Solar panels
- EV chargers

| | | |
|------------------|-----------|---------------------|
| Lounge | 122 sq ft | 11.3 m ² |
| Kitchen / Dining | 170 sq ft | 15.8 m ² |
| Bedroom 1 | 139 sq ft | 12.9 m ² |
| Bedroom 2 | 128 sq ft | 11.9 m ² |

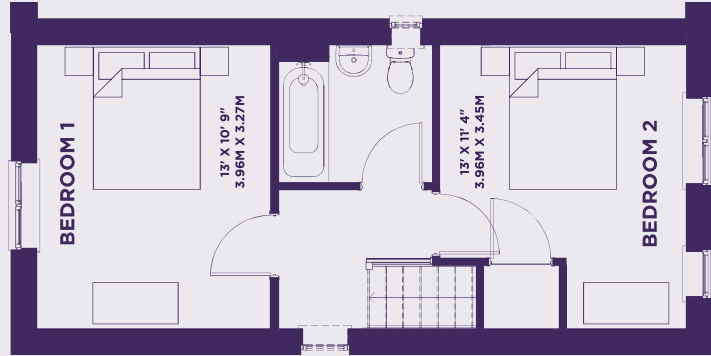
THE SHERMONT

PLOTS 256, 257 & 258
MID/END TERRACE
TOTAL 774 SQ FT

GROUND



FIRST





THE SHERMONT

This image is from an imaginary viewpoint within an open space area. Its purpose is to give a feel for the development, not an accurate description of each property. The illustration shows a typical Platform Home Ownership home of this type, but there are, however, variances from site to site. External materials, finishes, landscaping, windows and the position of garages, (where provided) may vary throughout the development. Properties may also be built handed (mirror image). Please ask for further details.

SPECIFICATION

Kitchen

- Modern fitted kitchen
 - Stainless steel integral oven, hob & extract hood
 - Space for washing machine & fridge/freezer
 - Vinyl flooring to kitchen and WC
- Open plan Kitchen/dining

Bathroom

- Family bathroom with Shower over bath
 - Three piece white suite
 - Complimentary wall tiling
- Vinyl flooring to bathroom

General

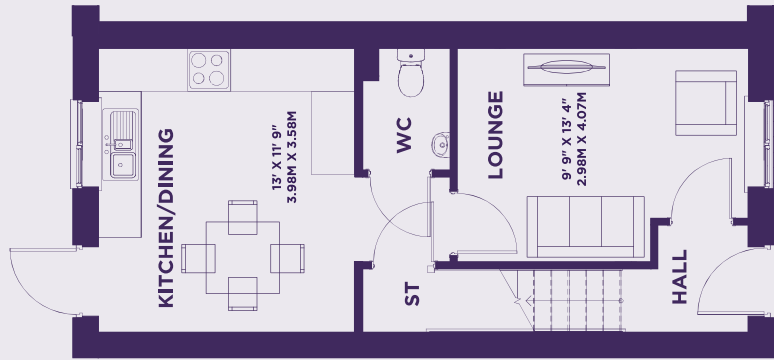
- Located at the heart of a popular market town with easy access to key spots such as Nottingham, Leicester and Lincoln.
- Excellent links to A1, A46 and A17
- 2 parking spaces per property
- 10 Year build warranty
- Solar panels
- EV chargers

| | | |
|------------------|-----------|---------------------|
| Lounge | 122 sq ft | 11.3 m ² |
| Kitchen / Dining | 170 sq ft | 15.8 m ² |
| Bedroom 1 | 139 sq ft | 12.9 m ² |
| Bedroom 2 | 128 sq ft | 11.9 m ² |

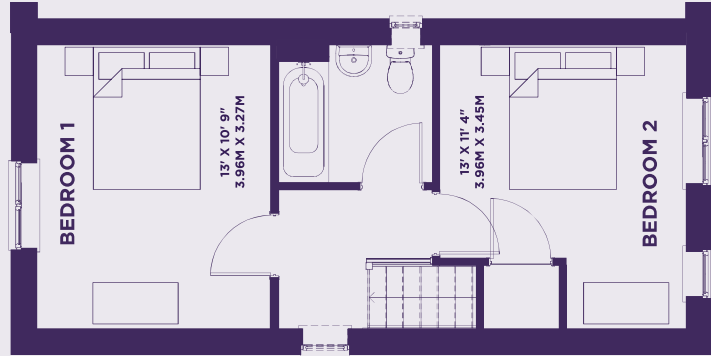
THE SHERMONT

PLOTS 180, 181, 253, 254 & 255
MID/END TERRACE
TOTAL 774 SQ FT

GROUND



FIRST





THE BAYMONT

This image is from an imaginary viewpoint within an open space area. Its purpose is to give a feel for the development, not an accurate description of each property. The illustration shows a typical Platform Home Ownership home of this type, but there are, however, variances from site to site. External materials, finishes, landscaping, windows and the position of garages, (where provided) may vary throughout the development. Properties may also be built handed (mirror image). Please ask for further details.

SPECIFICATION

Kitchen

- Modern fitted kitchen
- Stainless steel integral oven, hob & extract hood
- Space for washing machine & fridge/freezer
- Vinyl flooring to kitchen and WC
- Open plan Kitchen/dining

Bathroom

- Family bathroom with Shower over bath
- Three piece white suite
- Complimentary wall tiling
- Vinyl flooring to bathroom

General

- Located at the heart of a popular market town with easy access to key spots such as Nottingham, Leicester and Lincoln.
- Excellent links to A1, A46 and A17
- 2 parking spaces per property
- 10 Year build warranty
- Solar panels
- EV chargers

| | | |
|------------------|-----------|---------------------|
| LOUNGE | 150 sq ft | 13.9 m ² |
| KITCHEN | 174 sq ft | 16.1 m ² |
| Bedroom 1 | 162 sq ft | 15.1 m ² |
| Bedroom 2 | 158 sq ft | 14.7 m ² |

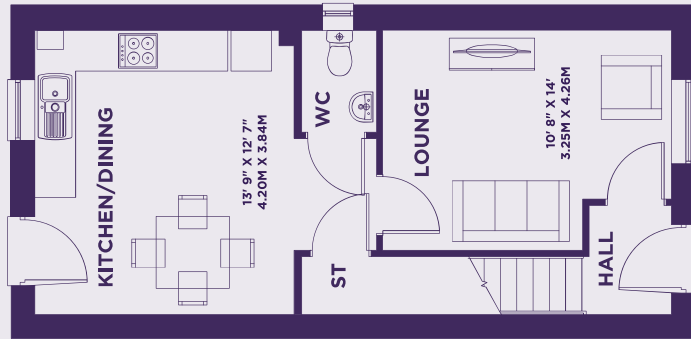
THE BAYMONT

PLOTS 188, 251, 252

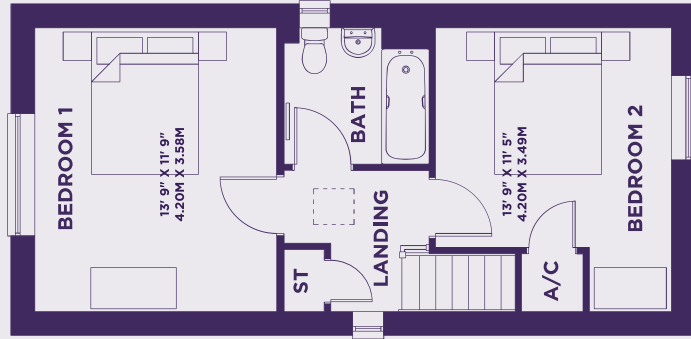
SEMI-DETACHED

TOTAL 850 SQFT

GROUND



FIRST





THE HAYTON

This image is from an imaginary viewpoint within an open space area. Its purpose is to give a feel for the development, not an accurate description of each property. The illustration shows a typical Platform Home Ownership home of this type, but there are, however, variances from site to site. External materials, finishes, landscaping, windows and the position of garages, (where provided) may vary throughout the development. Properties may also be built handed (mirror image). Please ask for further details.

SPECIFICATION

Kitchen

- Modern fitted kitchen
- Stainless steel integral oven, hob & extract hood
- Space for washing machine & fridge/freezer
- Vinyl flooring to kitchen and WC
- Open plan Kitchen/dining

Bathroom

- Family bathroom with Shower over bath
- Three piece white suite
- Complimentary wall tiling
- Vinyl flooring to bathroom

General

- Located at the heart of a popular market town with easy access to key spots such as Nottingham, Leicester and Lincoln.
- Excellent links to A1, A46 and A17
- 2 parking spaces per property
- 10 Year build warranty
- Solar panels
- EV chargers

| | | |
|------------------|-----------|---------------------|
| Lounge | 171 sq ft | 15.9 m ² |
| Kitchen / Dining | 154 sq ft | 14.3 m ² |
| Bedroom 1 | 156 sq ft | 14.5 m ² |
| Bedroom 2 | 100 sq ft | 9.3 m ² |
| Bedroom 3 | 79 sq ft | 7.4 m ² |

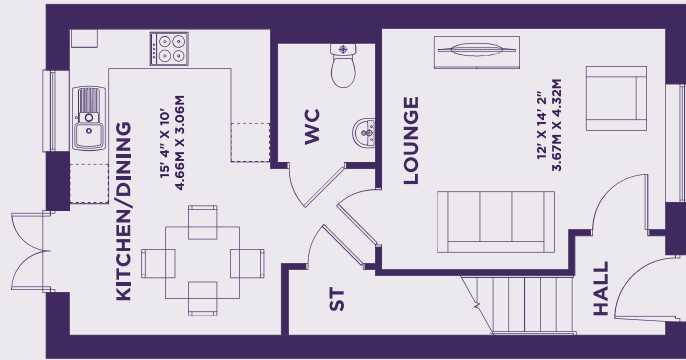
THE HAYTON

PLOTS 5, 6, 169, 170, 229, 230

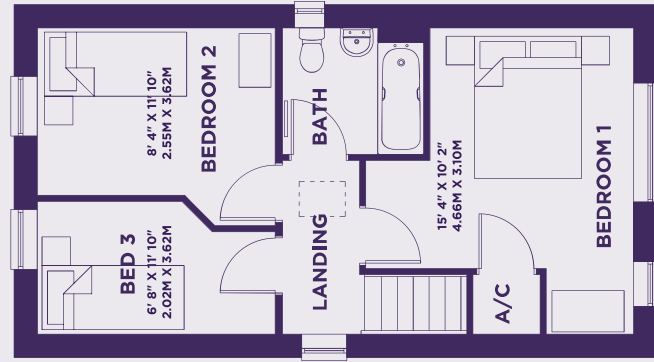
SEMI-DETACHED & MID TERRACE

TOTAL 911 SQFT

GROUND



FIRST





THE LOCKTON

This image is from an imaginary viewpoint within an open space area. Its purpose is to give a feel for the development, not an accurate description of each property. The illustration shows a typical Platform Home Ownership home of this type, but there are, however, variances from site to site. External materials, finishes, landscaping, windows and the position of garages, (where provided) may vary throughout the development. Properties may also be built handed (mirror image). Please ask for further details.

SPECIFICATION

Kitchen

- Modern fitted kitchen
- Stainless steel integral oven, hob & extract hood
- Space for washing machine & fridge/freezer
- Vinyl flooring to kitchen and WC
- Open plan Kitchen/dining

Bathroom

- Family bathroom with Shower over bath
- Three piece white suite
- Complimentary wall tiling
- Vinyl flooring to bathroom

General

- Located at the heart of a popular market town with easy access to key spots such as Nottingham, Leicester and Lincoln.
- Excellent links to A1, A46 and A17
- 2 parking spaces per property
- 10 Year build warranty
- Solar panels
- EV chargers

| | | |
|-----------------------|-----------|---------------------|
| Lounge | 180 sq ft | 16.8 m ² |
| Kitchen/Dining | 187 sq ft | 17.4 m ² |
| Bedroom 1 | 147 sq ft | 13.7 m ² |
| Bedroom 2 | 124 sq ft | 11.6 m ² |
| Bedroom 3 | 45 sq ft | 4.2 m ² |

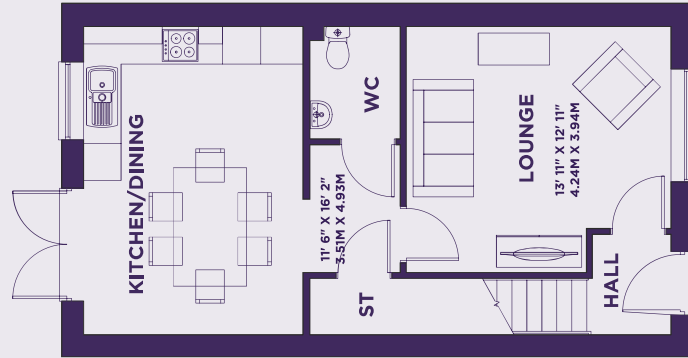
THE LOCKTON

PLOTS 208, 209, 214, 215, 216, 217, 218, 219, 221, 222, 223, 224, 232, 233, 269, 270, 272 & 273

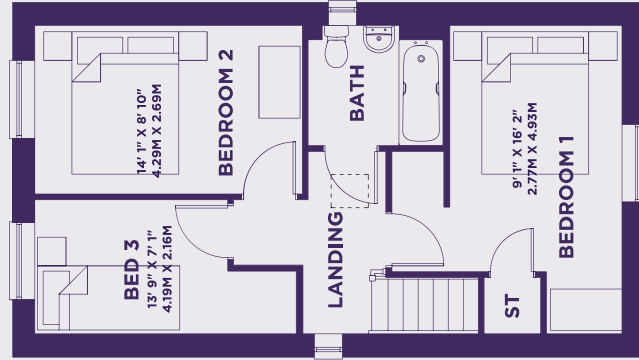
SEMI-DETACHED

TOTAL 1,001 SQFT

GROUND



FIRST





THE LOCKTON

This image is from an imaginary viewpoint within an open space area. Its purpose is to give a feel for the development, not an accurate description of each property. The illustration shows a typical Platform Home Ownership home of this type, but there are, however, variances from site to site. External materials, finishes, landscaping, windows and the position of garages, (where provided) may vary throughout the development. Properties may also be built handed (mirror image). Please ask for further details.

SPECIFICATION

Kitchen

- Modern fitted kitchen
- Stainless steel integral oven, hob & extract hood
- Space for washing machine & fridge/freezer
- Vinyl flooring to kitchen and WC
- Open plan Kitchen/dining

Bathroom

- Family bathroom with Shower over bath
- Three piece white suite
- Complimentary wall tiling
- Vinyl flooring to bathroom

General

- Located at the heart of a popular market town with easy access to key spots such as Nottingham, Leicester and Lincoln.
- Excellent links to A1, A46 and A17
- 2 parking spaces per property
- 10 Year build warranty
- Solar panels
- EV chargers

| | | |
|-----------------------|-----------|---------------------|
| Lounge | 180 sq ft | 16.8 m ² |
| Kitchen/Dining | 187 sq ft | 17.4 m ² |
| Bedroom 1 | 147 sq ft | 13.7 m ² |
| Bedroom 2 | 124 sq ft | 11.6 m ² |
| Bedroom 3 | 45 sq ft | 4.2 m ² |

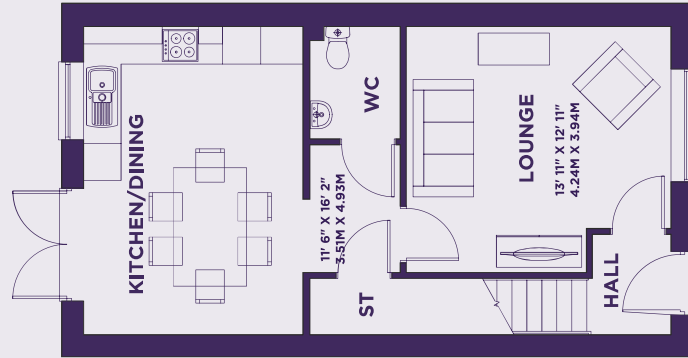
THE LOCKTON

PLOTS 220, 268, 271

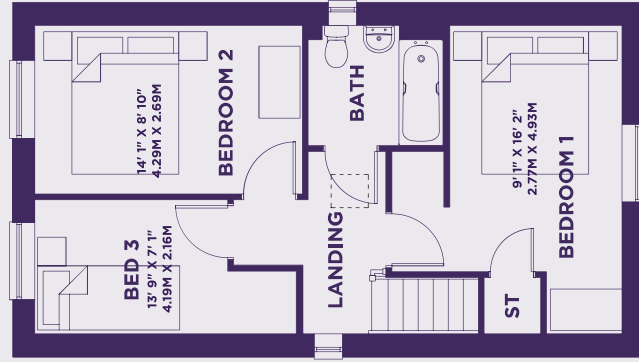
DETACHED

TOTAL 1,001 SQFT

GROUND



FIRST





THE LOCKTON

This image is from an imaginary viewpoint within an open space area. Its purpose is to give a feel for the development, not an accurate description of each property. The illustration shows a typical Platform Home Ownership home of this type, but there are, however, variances from site to site. External materials, finishes, landscaping, windows and the position of garages, (where provided) may vary throughout the development. Properties may also be built handed (mirror image). Please ask for further details.

SPECIFICATION

Kitchen

- Modern fitted kitchen
- Stainless steel integral oven, hob & extract hood
- Space for washing machine & fridge/freezer
- Vinyl flooring to kitchen and WC
- Open plan Kitchen/dining

Bathroom

- Family bathroom with Shower over bath
- Three piece white suite
- Complimentary wall tiling
- Vinyl flooring to bathroom

General

- Located at the heart of a popular market town with easy access to key spots such as Nottingham, Leicester and Lincoln.
- Excellent links to A1, A46 and A17
- 2 parking spaces per property
- 10 Year build warranty
- Solar panels
- EV chargers

| | | |
|-----------------------|-----------|---------------------|
| Lounge | 180 sq ft | 16.8 m ² |
| Kitchen/Dining | 187 sq ft | 17.4 m ² |
| Bedroom 1 | 147 sq ft | 13.7 m ² |
| Bedroom 2 | 124 sq ft | 11.6 m ² |
| Bedroom 3 | 45 sq ft | 4.2 m ² |

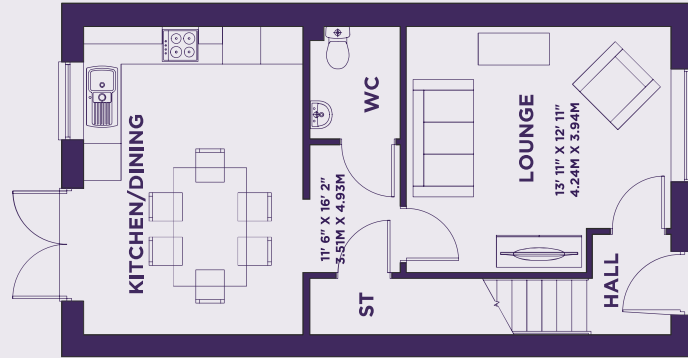
THE LOCKTON

PLOTS 210, 211 & 225

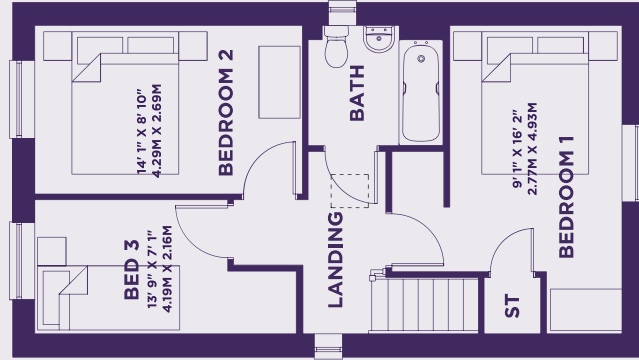
DETACHED

TOTAL 1,001 SQFT

GROUND



FIRST





THE TORWOOD

This image is from an imaginary viewpoint within an open space area. Its purpose is to give a feel for the development, not an accurate description of each property. The illustration shows a typical Platform Home Ownership home of this type, but there are, however, variances from site to site. External materials, finishes, landscaping, windows and the position of garages, (where provided) may vary throughout the development. Properties may also be built handed (mirror image). Please ask for further details.

SPECIFICATION

Kitchen

- Modern fitted kitchen
- Stainless steel integral oven, hob & extract hood
- Space for washing machine & fridge/freezer
- Vinyl flooring to kitchen and WC
- Open plan Kitchen/dining

Bathroom

- Family bathroom with Shower over bath
- Three piece white suite
- Complimentary wall tiling
- Vinyl flooring to bathroom

General

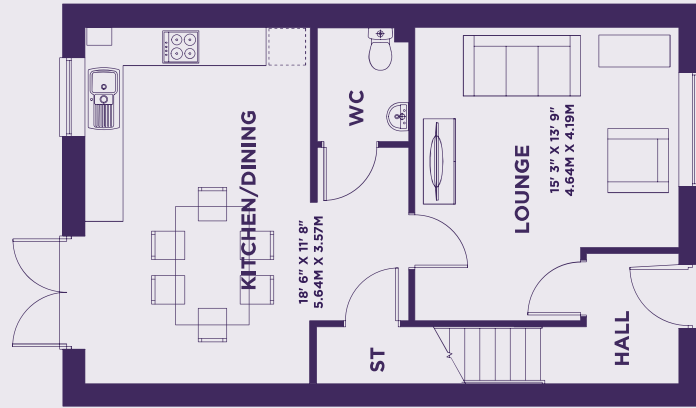
- Located at the heart of a popular market town with easy access to key spots such as Nottingham, Leicester and Lincoln.
- Excellent links to A1, A46 and A17
- 2 parking spaces per property
- 10 Year build warranty
- Solar panels
- EV chargers

| | | |
|-------------------------|-----------|---------|
| Lounge | 210 sq ft | 19.5 m2 |
| Kitchen / Dining | 217 sq ft | 20.2 m2 |
| Bedroom 1 | 127 sq ft | 11.8 m2 |
| Bedroom 2 | 115 sq ft | 10.7 m2 |
| Bedroom 3 | 103 sq ft | 9.6 m2 |
| Bedroom 4 | 82 sq ft | 7.6 m2 |

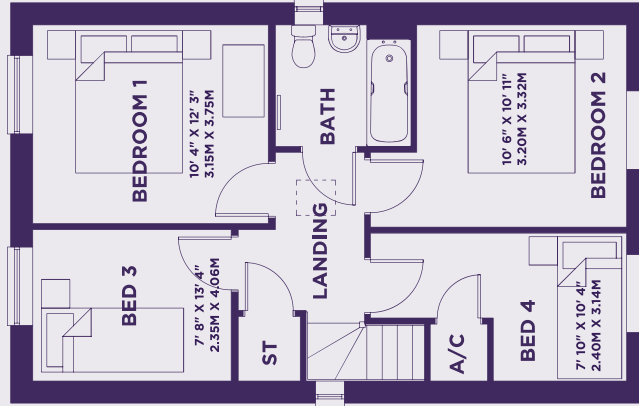
THE TORWOOD

LOTS 228, 231
SEMI-DETACHED
TOTAL 1,143 SQFT

GROUND



FIRST





THE TAYWOOD

This image is from an imaginary viewpoint within an open space area. Its purpose is to give a feel for the development, not an accurate description of each property. The illustration shows a typical Platform Home Ownership home of this type, but there are, however, variances from site to site. External materials, finishes, landscaping, windows and the position of garages, (where provided) may vary throughout the development. Properties may also be built handed (mirror image). Please ask for further details.

SPECIFICATION

Kitchen

- Modern fitted kitchen
- Stainless steel integral oven, hob & extract hood
- Space for washing machine & fridge/freezer
- Vinyl flooring to kitchen and WC
- Open plan Kitchen/dining

Bathroom

- Family bathroom with Shower over bath
- Three piece white suite
- Complimentary wall tiling
- Vinyl flooring to bathroom

General

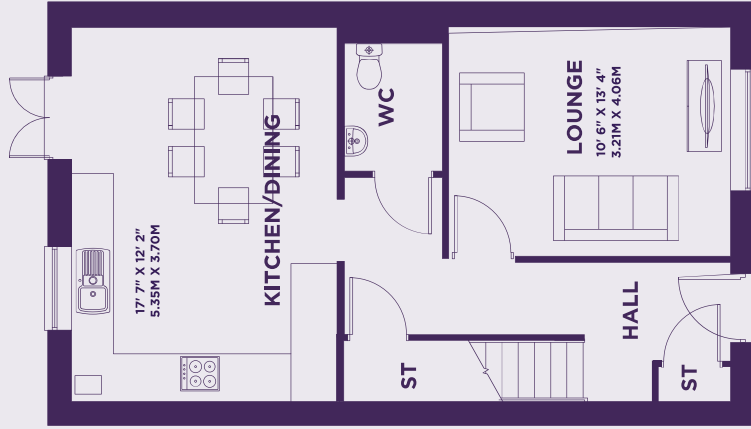
- Located at the heart of a popular market town with easy access to key spots such as Nottingham, Leicester and Lincoln.
- Excellent links to A1, A46 and A17
- 2 parking spaces per property
- 10 Year build warranty
- Solar panels
- EV chargers

| Kitchen / Dining | 213 sq ft | 19.8 m ² |
|------------------|-----------|---------------------|
| Lounge | 140 sq ft | 13.1 m ² |
| Bedroom 1 | 116 sq ft | 10.7 m ² |
| Bedroom 2 | 121 sq ft | 11.2 m ² |
| Bedroom 3 | 78 sq ft | 7.2 m ² |
| Bedroom 4 | 62 sq ft | 5.7 m ² |

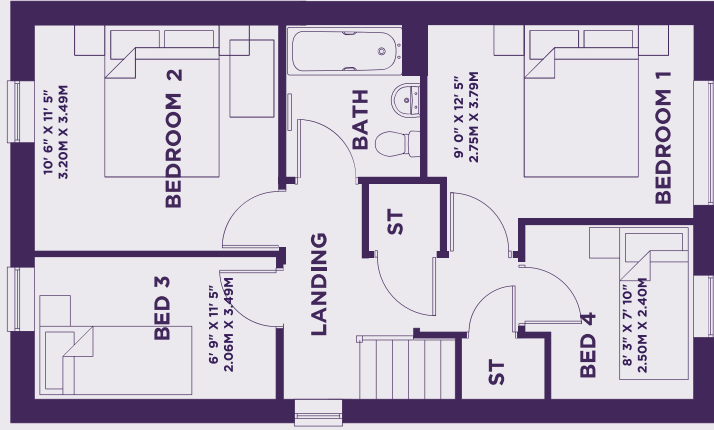
THE TAYWOOD

PLOTS 166, 167
SEMI-DETACHED
TOTAL 1,083 SQFT

GROUND



FIRST



Lockview at Middlebeck

Newark-on-trent

HOUSE PRICES FOR ALL PLOTS AVAILABLE

| PLOT | TYPE | ADDRESS | HANDOVER | 100% SHARE | 25% SHARE VALUE | MONTHLY RENT |
|------|-------------------------|-----------------------------|-----------|------------|-----------------|--------------|
| 169 | Hayton Semi 3 Bed | 63 Bluebell Drive, NG24 4FS | Dec 2026 | £275,000 | £68,750 | £472.66 |
| 170 | Hayton Semi 3 Bed | 61 Bluebell Drive, NG24 4FS | Dec 2026 | £275,000 | £68,750 | £472.66 |
| 171 | Lockton Semi-Det 3 Bed | 77 Bluebell Drive, NG24 4FS | Nov 2026 | £295,000 | £78,750 | £541.41 |
| 172 | Lockton Semi-Det 3 Bed | 75 Bluebell Drive, NG24 4FS | Nov 2026 | £295,000 | £76,250 | £524.22 |
| 173 | Lockton Semi-Det 3 Bed | 73 Bluebell Drive, NG24 4FS | Nov 2026 | £295,000 | £73,750 | £507.03 |
| 214 | Lockton Semi-Det 3 Bed | 71 Bluebell Drive, NG24 4FS | Oct 2026 | £295,000 | £73,750 | £507.03 |
| 215 | Lockton Semi-Det 3 Bed | Sold Subject To Contract | Oct 2026 | £295,000 | £73,750 | £507.03 |
| 216 | Lockton Semi-Det 3 Bed | 59 Bluebell Drive, NG24 4FS | Oct 2026 | £295,000 | £73,750 | £507.03 |
| 178 | Lockton EOT 3 Bed | 8 Kiln Grove, NG24 4GR | Oct 2026 | £295,000 | £73,750 | £507.03 |
| 177 | Lockton Mid-Terr | 6 Kiln Grove, NG24 4GR | Oct 2026 | £290,000 | £72,500 | £498.44 |
| 176 | Lockton Mid-Terr | 4 Kiln Grove, NG24 4GR | Oct 2026 | £290,000 | £72,500 | £498.44 |
| 175 | Lockton EOT 3 Bed | 2 Kiln Grove, NG24 4GR | Oct 2026 | £295,000 | £73,750 | £507.03 |
| 181 | Shermont Mid-Terr 2 Bed | 12 Kiln Grove, NG24 4GR | Sept 2026 | £230,000 | £57,500 | £395.31 |
| 181 | Shermont Mid-Terr 2 Bed | 14 Kiln Grove, NG24 4GR | Sept 2026 | £230,000 | £57,500 | £395.31 |

| PLOT | TYPE | ADDRESS | HANDOVER | 100% SHARE | 25% SHARE VALUE | MONTHLY RENT |
|------|---------------------------|-----------------------------|-------------|------------|-----------------|--------------|
| 223 | Lockton Semi-Det 3 Bed | 45 Bluebell Drive, NG24 4FS | READY PLOT | £295,000 | £73,750 | £507.03 |
| 233 | Lockton Semi-Det 3 Bed | 4 Pottery Place, NG24 4GS | READY PLOT | £295,000 | £73,750 | £507.03 |
| 218 | Lockton Semi-Det 3 Bed | 55 Bluebell Drive, NG24 4FS | READY PLOT | £295,000 | £73,750 | £507.03 |
| 205 | Lockton EOT 3 Bed | 11 Pottery Place, NG24 4GS | READY PLOT | £295,000 | £73,750 | £507.03 |
| 209 | Lockton Semi-Det 3 Bed | Sold Subject To Contract | READY PLOT | £295,000 | £73,750 | £507.03 |
| 207 | Lockton EOT 3 Bed | 7 Pottery Place, NG24 4GS | READY PLOT | £295,000 | £73,750 | £507.03 |
| 206 | Lockton Mid-Terr 3 Bed | 9 Pottery Place, NG24 4GS | READY PLOT | £290,000 | £72,500 | £498.44 |
| 168 | Lockton Detached 3 Bed | Sold Subject To Contract | Dec 2026 | £305,000 | £76,250 | £524.22 |
| 183 | Lockton Semi-Det 3 Bed | 18 Kiln Grove, NG24 4GR | June 2026 | £295,000 | £73,750 | £507.03 |
| 184 | Lockton Semi-Det 3 Bed | 20 Kiln Grove, NG24 4GR | READY PLOT | £295,000 | £73,750 | £507.03 |
| 185 | Lockton Semi-Det 3 Bed | 22 Kiln Grove, NG24 4GR | READY PLOT | £295,000 | £73,750 | £507.03 |
| 186 | Lockton Semi-Det 3 Bed | 24 Kiln Grove, NG24 4GR | READY PLOT | £295,000 | £73,750 | £507.03 |
| 245 | Lockton Mid-Terr 3 Bed | 17 Kiln Grove, NG24 4GR | August 2026 | £290,000 | £72,500 | £498.44 |
| 240 | Lockton Semi-Det 3 Bed | 27 Kiln Grove, NG24 4GR | READY PLOT | £295,000 | £73,750 | £507.03 |
| 241 | Lockton Semi-Det 3 Bed | 25 Kiln Grove, NG24 4GR | READY PLOT | £295,000 | £73,750 | £507.03 |
| 192 | Lockton Semi-Det 3 Bed | 39 Pottery Place, NG24 4GS | July 2026 | £295,000 | £73,750 | £507.03 |
| 193 | Lockton Semi-Det 3 Bed | 37 Pottery Place, NG24 4GS | July 2026 | £295,000 | £73,750 | £507.03 |
| 217 | Lockton Semi-Det 3 Bed | 57 Bluebell Drive, NG24 4FS | Oct 2026 | £295,000 | £73,750 | £507.03 |
| 60 | Allamont - 2 Bed Bungalow | 56 Roman Meadows, NG24 4GN | Dec 2026 | £247,500 | £61,875 | £425.39 |



MIDDLEBECK,
NEWARK,
NG24 3XP

GET IN TOUCH
0333 200 7304
sales@platformhg.com

SATNAV
NG24 3XP



PLATFORMHOMEOWNERSHIP



@PLATFORMHOMEOWNERSHIP



@PLATFORMNEWHOME

Platform Home Ownership have taken every effort to ensure that these documents are accurate and represent the properties available. Platform Home Ownership and the developer may in their efforts to improve design reserve the right to alter site plans, floorplans, elevations and specifications without prior notice. Maps shown are not to scaled and for illustrative purposes only. Distances are taken from [google.co.uk/maps](https://www.google.co.uk/maps). Information is correct at the time it was published - June 2026. For more information please visit us website at www.platformhomeownership.com